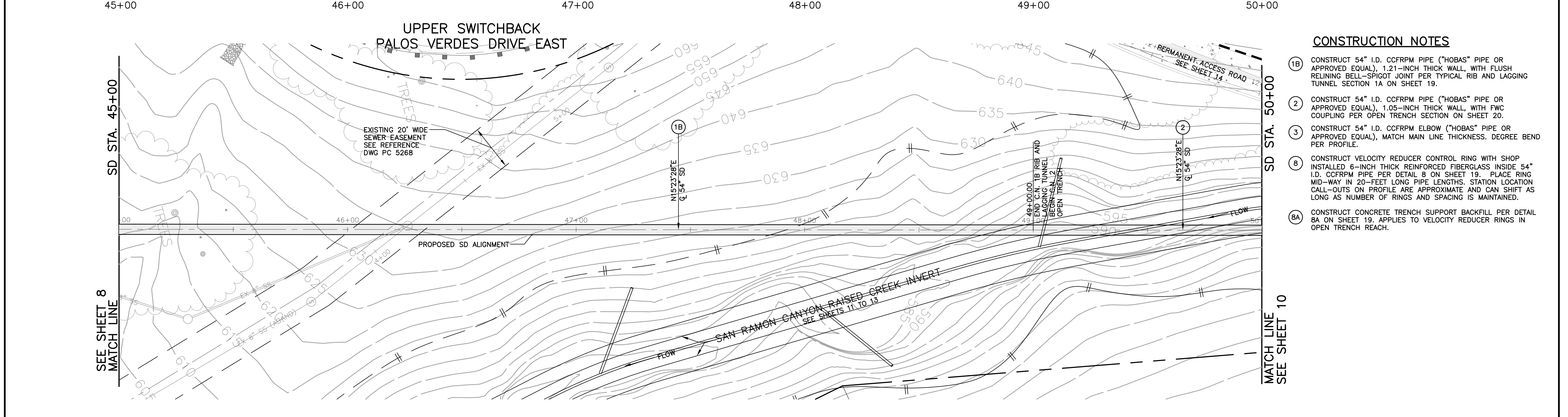
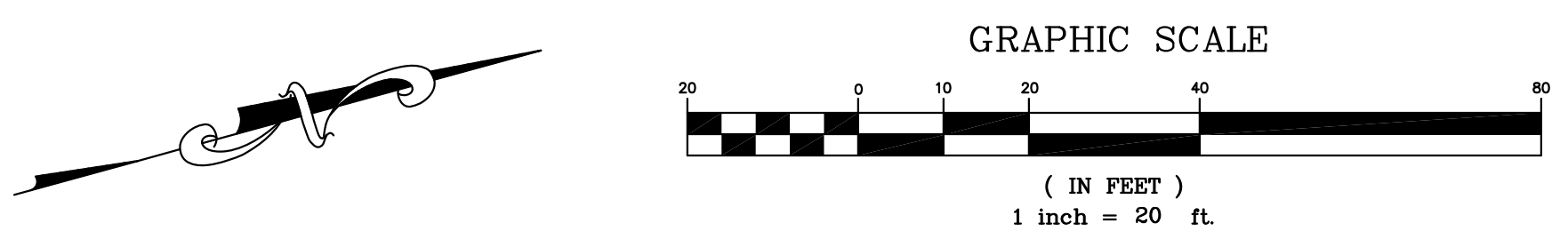


SCALE  
 HORIZ: 1"=20'  
 VERT: 1"=10'



- CONSTRUCTION NOTES**
- (1B) CONSTRUCT 54" I.D. CCFRPM PIPE ("HOBAS" PIPE OR APPROVED EQUAL), 1.21-INCH THICK WALL, WITH FLUSH RELINING BELL-SPIGOT JOINT PER TYPICAL RIB AND LAGGING TUNNEL SECTION 1A ON SHEET 19.
  - (2) CONSTRUCT 54" I.D. CCFRPM PIPE ("HOBAS" PIPE OR APPROVED EQUAL), 1.05-INCH THICK WALL, WITH FWC COUPLING PER OPEN TRENCH SECTION ON SHEET 20.
  - (3) CONSTRUCT 54" I.D. CCFRPM ELBOW ("HOBAS" PIPE OR APPROVED EQUAL), MATCH MAIN LINE THICKNESS. DEGREE BEND PER PROFILE.
  - (8) CONSTRUCT VELOCITY REDUCER CONTROL RING WITH SHOP INSTALLED 6-INCH THICK REINFORCED FIBERGLASS INSIDE 54" I.D. CCFRPM PIPE PER DETAIL 8 ON SHEET 19. PLACE RING MID-WAY IN 20-FOOT LONG PIPE LENGTHS. STATION LOCATION CALL-OUTS ON PROFILE ARE APPROXIMATE AND CAN SHIFT AS LONG AS NUMBER OF RINGS AND SPACING IS MAINTAINED.
  - (8A) CONSTRUCT CONCRETE TRENCH SUPPORT BACKFILL PER DETAIL 8A ON SHEET 19. APPLIES TO VELOCITY REDUCER RINGS IN OPEN TRENCH REACH.

60% DESIGN PLANS  
 NOT FOR CONSTRUCTION  
 NOVEMBER 1, 2011



PLAN PREPARED BY:  
**Harris & Associates**  
 34 Executive Park, Suite 150  
 Irvine, CA 92614 (949) 655-3900  
 RANDALL G. BERRY RCE #44642 DATE

CITY OF RANCHO PALOS VERDES  
 RON DRAGOO SENIOR ENGINEER DATE  
 RCE: 54924

| NO.       | DATE | DESCRIPTION | APPROVED |
|-----------|------|-------------|----------|
| REVISIONS |      |             |          |

DESIGNED RGB/EGR/PL  
 DRAWN EGR/PL  
 CHECKED RGB  
 DATE OCT 11

CITY OF RANCHO PALOS VERDES



SAN RAMON STORM DRAIN

SHEET 9 OF 31  
 SHT. 9  
 PRJ NO. XXXXX