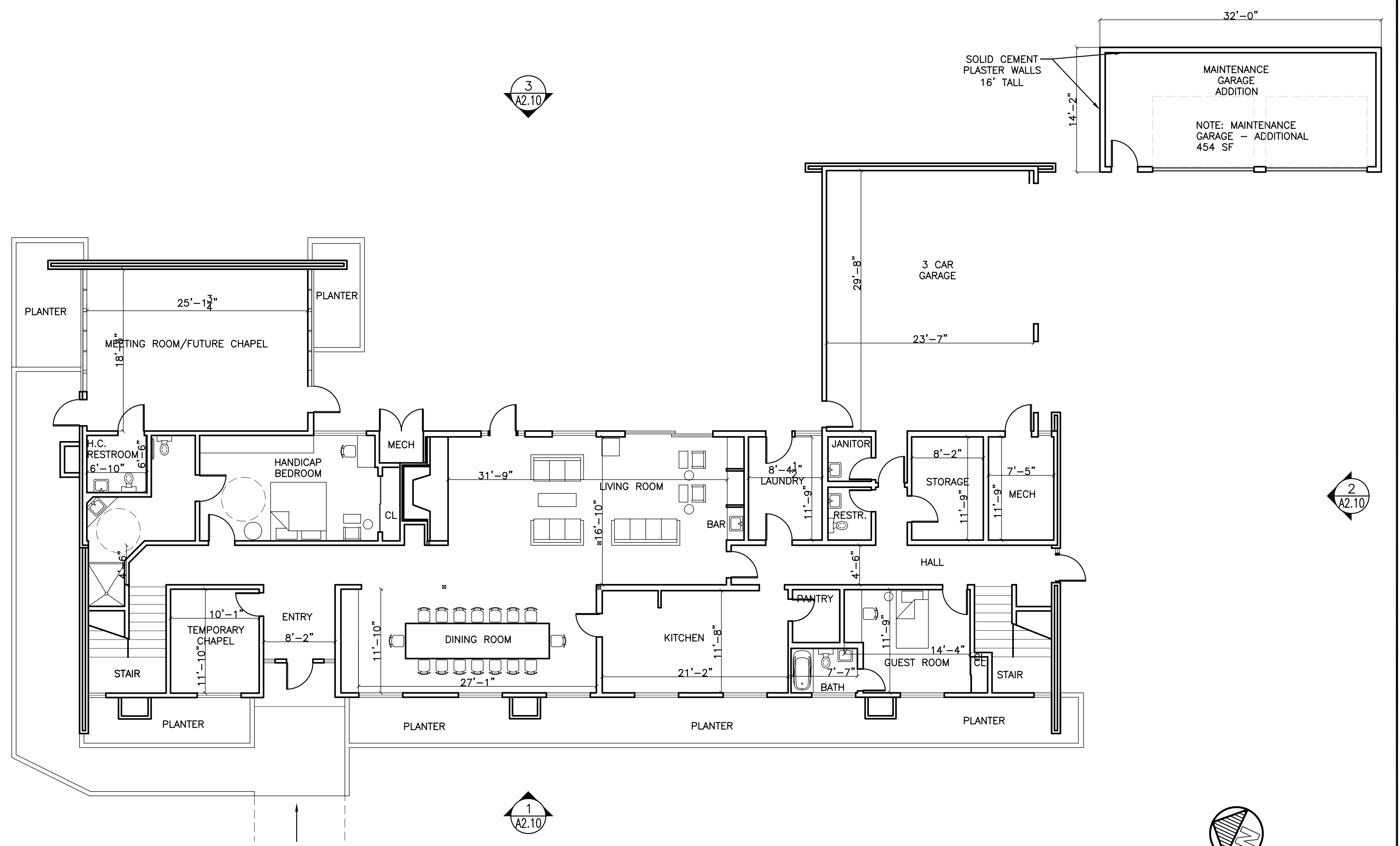
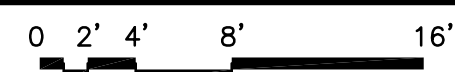


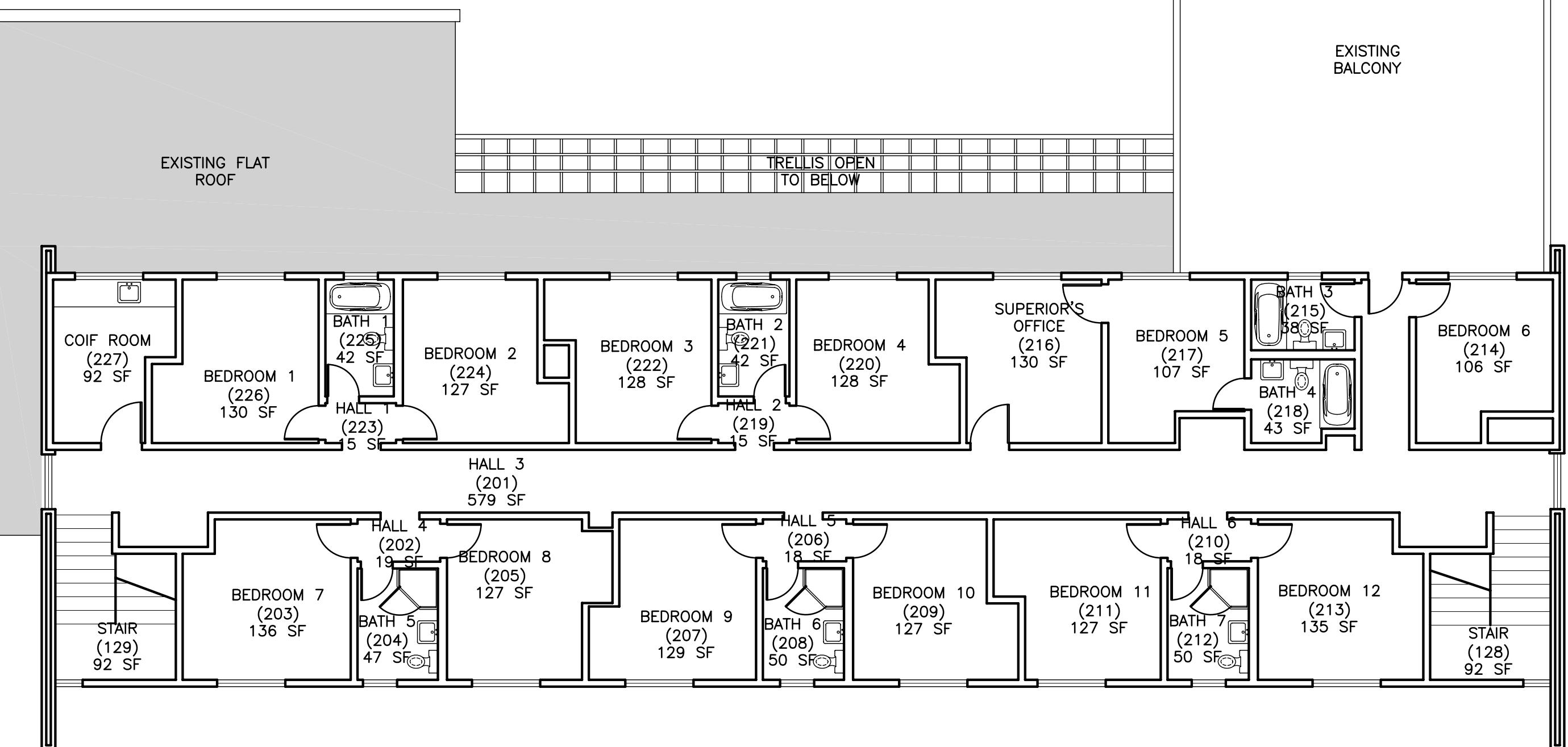
1 EXISTING CONVENT GROUND FLOOR PLAN

A2.9 SCALE: 1/8"=1'-0"



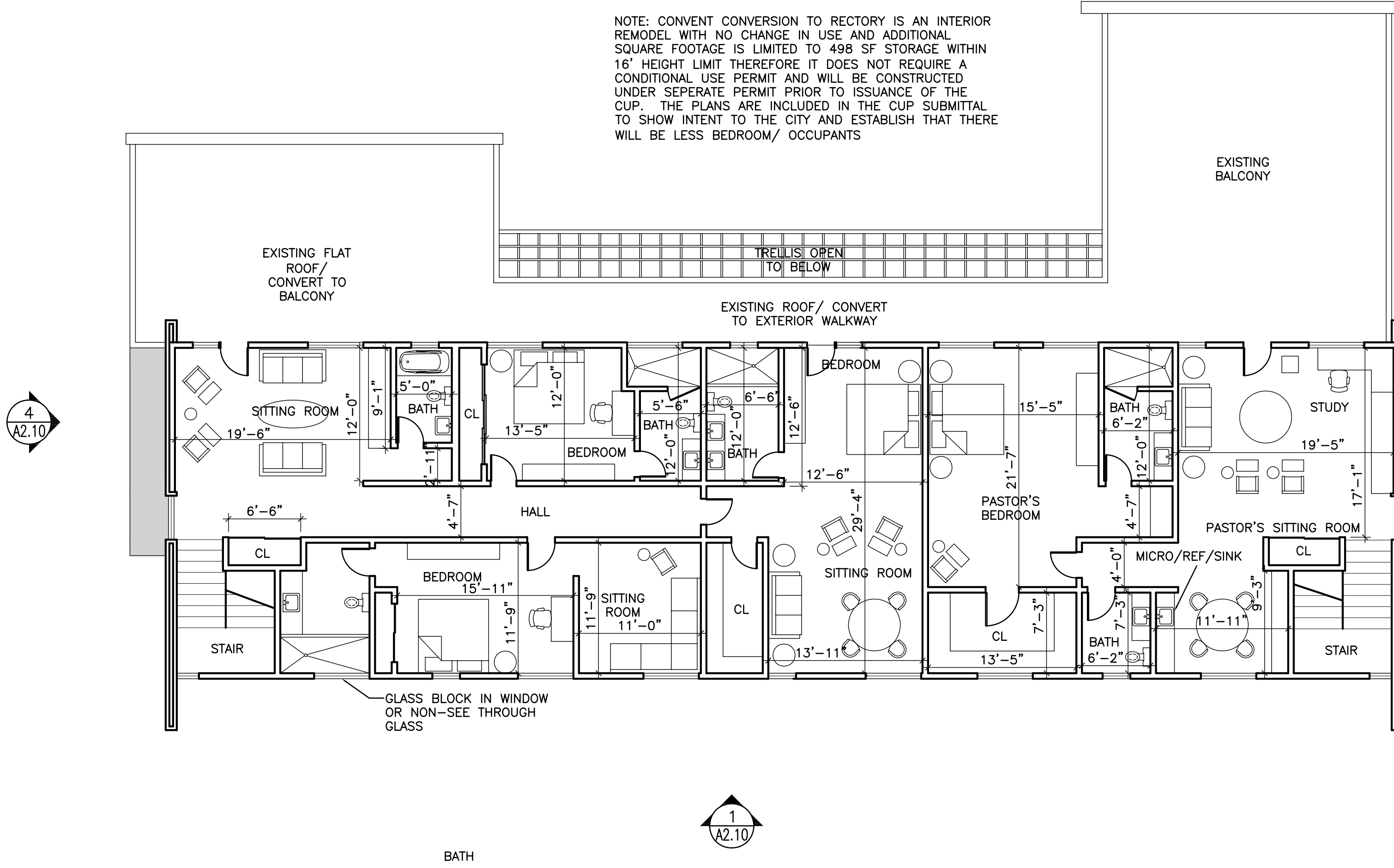
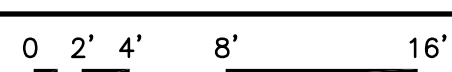
3 NEW RECTORY REMODEL GROUND FLOOR PLAN

A2.9 SCALE: 1/8"=1'-0"



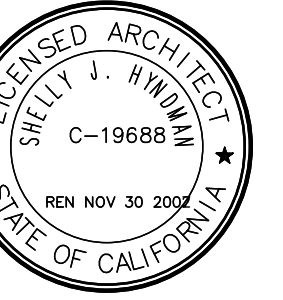
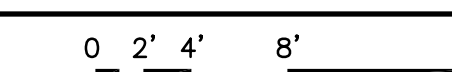
2 EXISTING CONVENT 2ND FLOOR PLAN

A2.9 SCALE: 1/8"=1'-0"

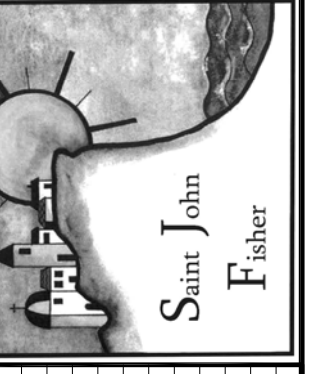


4 NEW RECTORY REMODEL 2ND FLOOR PLAN

A2.9 SCALE: 1/8"=1'-0"



St. John Fisher
5448 Crest Road
Rancho Palos Verdes, CA 90275



INTERIORS
HYNDMAN
ARCHITECTURE
2611 SOUTH COAST HIGHWAY 101 - SUITE 201, CARLEIGH, CA 92007 (760)834-2585

REVISIONS:
01/08 3RD SUBMITTAL

EXISTING CONVENT/
NEW RECTORY
FLOOR PLANS

Date JANUARY 2008

Sheet

A2.9
Of Sheets