

CITY MANAGER'S WEEKLY ADMINISTRATIVE REPORT

MARCH 17, 2021 (REPORT NO. 21-11)

TABLE OF CONTENTS

CITY MANAGER - PAGE 4

- Annual Budget Workshop March 30
- Emergency Preparedness Committee Recruitment
- DDT Dumping Letter Update
- SB 10 Letter
- Reminder: West Basin Water is Life Student Art Contest Submissions Due March 19
- West Basin Launches Free Rain Barrel Contactless Home Delivery Program
- PVPLC Invites You to a Virtual Docent Orientation
- SBCCOG Presents Home Share South Bay
- L.A. County Moves into Red Tier, Allowing Reopening of Grades 7-12, Indoor Dining, Movie Theaters, and Other Sectors with Safety Measures in Place
- COVID-19 Vaccine Eligibility Expands to People with High-Risk Underlying Conditions
- COVID-19 Community Updates
 - COVID-19 Cases
 - Vaccinations
- Emergency Preparedness
 - Tips for Finding Residential Fire Insurance
 - Monthly Disaster Preparedness Messaging - Courtesy of the RPV Emergency Preparedness Committee
 - Emergency Preparedness Tips
 - Earthquake Preparedness
- Public Safety
 - Weekly Crime Report Summaries
 - Security Camera Grant Program Extended
 - Tips to Prevent Vehicle Burglaries
 - Safe Drug Drop-off Locations

FINANCE - PAGE 22

- Congratulations, Sovanna!
- FAC Meeting
- Business License Renewal 2021

PUBLIC WORKS - PAGE 24

- Altamira Canyon Drainage Study Extension
- Rattlesnake Trailhead Gate Update
- Traffic Signal at Hawthorne Boulevard and Via Rivera Project Update
- Maintenance Activities
- OSHA 10 Safety Training Course

COMMUNITY DEVELOPMENT - PAGE 28

- South Bay Cities Council of Governments (SBCCOG) 21st Annual General Assembly
- City Submits Comment Letter on Draft Environmental Impact Report (EIR) for the Los Angeles International Airport (LAX) Airfield and Terminal Modernization Project (ATMP)
- March 10 LAX Community Noise Roundtable Virtual Meeting Summary
- Planning Commission Draft Agenda

RECREATION AND PARKS - PAGE 30

- Preserve Parking and Access Issues: Actions Taken at the March 16 City Council Meeting
- Rattlesnake Gate Update
- ParkMobile Parking App Project Update
- Virtual Whale of a Day – April 10, 2021
- New Exhibits at the Point Vicente Interpretive Center
- April Re-Opening of PVIC!
- Filming in RPV
- Revised Guidance and Safety Measures for Outdoor Recreation and Private Gatherings
- Hunt for the Golden Egg
- Verde in the Park
- Preserve and Beach Weekend Activity
- Parks and Preserve Weekend Report

CORRESPONDENCE AND INFORMATION RECEIVED (See Attachments)

- Calendars – Page 41
- Tentative Agendas – Page 44
- Channel 33 and 38 Schedule – Page 48
- Channel 35 and 39 Schedule – Page 49
- Crime Reports – Page 50
- PRA Log (Open Requests) – Page 57

CITY MANAGER'S OFFICE

Annual Budget Workshop March 30

On March 30, the City Council will host its annual budget workshop for the General Fund (the City's chief operating fund).

The hybrid in-person/virtual meeting will take place at 6 p.m. Public participation will be limited to the virtual platform only. Please note that the meeting will not be livestreamed or televised, but a recording will be available at rpvca.gov/agendas.

City staff will present the Fiscal Year 2020-21 year-end estimate of revenues and expenditures, the assumptions used to prepare the FY 2021-22 proposed budget, and fund balance. The City Council will conduct a workshop on the Capital Improvement Plan on April 12, 2021. The preliminary FY 2021-22 budget, all funds, and the 5-year Capital Improvement Plan will be presented at the May 18 City Council meeting. An agenda and supporting materials will be available at rpvca.gov/agendas.

To watch the budget workshop live and/or participate in public comment, please complete the participation form at rpvca.gov/participate for a Zoom invite.

If you are a person with a disability and need an accommodation to participate in programs, services, activities and meetings, contact the City's ADA Coordinator/Risk Manager at 310-683-3157, adarequests@rpvca.gov, 30940 Hawthorne Blvd., Rancho Palos Verdes, CA 90275, at least 48 hours in advance to request an auxiliary aid or accommodation.





Emergency Preparedness Committee Recruitment

Want to get more involved in local government? The City is accepting applications to fill two vacancies on the **Emergency Preparedness Committee**. These are volunteer, non-paying positions with terms of office ending in June 2024.

The seven-member Emergency Preparedness Committee is charged with making recommendations to the City Council to help ensure that the City of Rancho Palos Verdes develops and maintains a high state of readiness to respond to emergencies and disasters. Committee members advise the City Council on ways to develop and improve programs to communicate with and educate residents about the importance of emergency preparedness. Committee members are called upon to participate in community outreach events to encourage residents to become prepared and to participate in local volunteer disaster response organizations. Committee members are also encouraged to become trained and registered as Disaster Service Workers, and/or receive other disaster-related training and certifications.

The committee meets on a monthly basis, typically the third Thursday of the month, at 7 p.m. in the Community Room at City Hall. However, due to current COVID-19 restrictions, the committee has been meeting virtually using the Zoom platform.

How to Apply

Those interested in applying must submit an application to the City Clerk's Office by 4:30 p.m. on Friday, April 9. To be considered for appointment, an applicant must be a resident of the City of Rancho Palos Verdes. To apply, please visit the [Advisory Board](#)

[Recruitment](#) page on the City website. Applications may also be requested by contacting the City Clerk's Department at cityclerk@rpvca.gov or by calling 310-544-5217.

Interviews with the City Council are tentatively scheduled to take place on April 20 prior to the regularly scheduled City Council Meeting virtually using the Zoom platform. The City Clerk's Office will confirm the date and time of the interviews with the applicants.

DDT Dumping Letter Update

Staff has received several responses to letters sent to state and federal agencies and elected representatives calling for an assessment of the extent of DDT dumping off the coast of the Palos Verdes Peninsula. Dr. Deborah Jordan, Acting Regional Administrator of the U.S. EPA Region 9, confirmed receipt of the letter, as did Tom Ford, CEO of the Bay Foundation, who said his organization shares the City's interest and concern. A liaison for Assemblymember Al Muratsuchi indicated his office is still awaiting recommendations from the Governor's office before taking any further action, and that in the meantime, the federal government is taking the lead, with investigations by the National Oceanic and Atmospheric Administration (NOAA) and the Environmental Protection Agency underway. These agencies are currently in Phase 1, which involves mapping the ocean floor to determine the extent of the issue. Phase 2 involves collecting samples to understand the chemical composition of the waste.

Assemblymember Muratsuchi was assured that there is no immediate threat to his constituents; shallow waters are not dangerous for swimmers and there is ongoing EPA funding for educating local vendors about not selling bottom dwelling fish from the area.

Last week's [Los Angeles Times article](#) on the seafloor mission noted that in December, Assemblymember Patrick O'Donnell of Long Beach introduced Assembly Joint Resolution 2, calling on Congress and the United States Environmental Protection Agency to take action on the DDT waste site off the north coast of Catalina Island (see attachments). The bill is pending referral to its first policy committee. Staff will bring a letter of support for consideration at the April 6 City Council meeting.

SB 10 Letter

On March 16, the cities of Rancho Palos Verdes, Palos Verdes Estates and Rolling Hills sent a joint letter to Senator Scott Wiener of San Francisco opposing SB 10, which would limit local land use authority related to high-density zoning in transit-rich, jobs-rich areas (see attachments). The City Council previously sent an individual opposition letter on February 2. Staff will continue to monitor this bill.

Reminder: West Basin Water is Life Student Art Contest Submissions Due March 19

Calling all students in West Basin's service area! Show off your creativity and passion for the environment by submitting to West Basin's **Water is Life** student art contest!

The district is accepting student submissions for its Water is Life student art contest through **March 19**.

For contest details and to register for lessons, visit westbasin.org/waterislife.



West Basin Launches Free Rain Barrel Contactless Home Delivery Program

Catch the rain and save water with a free rain barrel from the West Basin Municipal Water District! West Basin is piloting a new safe and contactless Rain Barrel Home Delivery Program for its residents to receive water savings delivered to their front door.

Check your eligibility and sign up to receive your free rain barrel by visiting westbasin.org/rainbarrels.



PVPLC Invites You to a Virtual Docent Orientation

Are you retired, a former educator or outdoor enthusiast? Do you enjoy local nature and want to share it with others? Become a docent with the Palos Verdes Peninsula Land Conservancy.

Join PVPLC **March 20 from 9 -11 a.m.** via Zoom for an orientation to find out about PVPLC's many volunteer opportunities to:

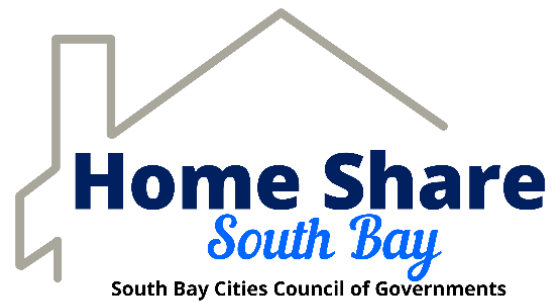
- Help visitors enjoy the exhibits at one of our two nature centers
- Assist students with outdoor education field trips
- Visit local classrooms with Junior Naturalist Program lessons
- and much more!

Being a docent is a wonderful way to help connect youth with the beautiful and unique nature of the Peninsula. You'll have fun and increase your own knowledge in the process!

Please RSVP at: www.pvplc.volunteerhub.com

SBCCOG Presents Home Share South Bay

The South Bay Cities Council of Governments (SBCCOG) has partnered with Silvernest for Home Share South Bay. Home Share South Bay helps compatible homeowners and renters find each other, and provides support for their homesharing journey (see attachments).



Feeling isolated? Seeking companionship? Want to age in place? Need extra income? Need help around the house? Contact Home Share South Bay for details and assistance by visiting silvernest.com/SouthBay or email Laurie Jacobs with the South Bay Cities Council of Governments at laurie@southbaycities.org.

SECTOR/ACTIVITY	PURPLE TIER	RED TIER <small>*Effective Monday, March 15 at 12:01 AM*</small>
RESTAURANTS	Outdoor dining only	Indoor dining with modifications: <ul style="list-style-type: none"> • Max 25% capacity or 100 people, whichever is fewer • 8 feet distancing between tables • One household per table with limit of 6 people Outdoor dining with modifications: <ul style="list-style-type: none"> • Expand from one household up to six per table to members from 3 households (up to six people) per table
SCHOOLS (K-12)	<ul style="list-style-type: none"> • Schools meeting requirements may open for in-person instruction for grades TK-6 • Students must be assigned to stable groups of students 	<ul style="list-style-type: none"> • Local school officials will decide whether and when that will occur. • Schools may reopen fully for in-person instruction • Continue to require adherence to LA County Public Health school re-opening protocols
MOVIE THEATERS	Closed	<ul style="list-style-type: none"> • Indoor operations allowed at 25% capacity or 100 people, whichever is fewer • Reserved seating required
GYMS, FITNESS CENTERS AND YOGA STUDIOS	Outdoor at 50% capacity	<ul style="list-style-type: none"> • Indoor operations allowed at 10% capacity • Climbing walls open • Gyms can offer personal training • Masking always required
MUSEUMS, ZOOS AND AQUARIUMS	Outdoor at 50% capacity	Indoor capacity at 25%

L.A. County Moves into Red Tier, Allowing Reopening of Grades 7-12, Indoor Dining, Movie Theaters, and Other Sectors with Safety Measures in Place

In a major milestone, L.A. County has met the state's threshold to reopen key sectors, permitting a wide range of indoor operations to resume with safeguards in place. Newly permitted activities and modified safety protocols in the red tier include the following:

- **Museum, zoos and aquariums** can open indoors at 25% capacity.
- **Gyms, fitness centers, yoga and dance studios** can open indoors at 10% capacity with masking requirement for all indoor activities.
- **Movie theatres** can open indoors at 25% capacity with reserved seating only where each group is seated with at least 6 feet of distance in all directions between any other groups.
- **Retail and personal care services** can increase capacity to 50% with masking required at all times and for all services.
- **Restaurants** can open indoors at 25% max capacity under the following conditions: 8 feet distancing between tables; one household per table with a limit of 6 people; the HVAC system is in good working order and has been evaluated, and to the maximum extent possible ventilation has been increased. Public Health strongly recommends that all restaurant employees interacting with customers indoors are provided with additional masking protection (above the currently required face shield over face masks); this can be fit tested N95 masks, KN95 masks, or double masks and a face shield. In addition, Public Health strongly recommends that all employees working indoors are informed about and offered opportunities to be vaccinated. Outdoor dining can accommodate up to six people per table from 3 different households.
- **Indoor shopping malls** can increase capacity to 50% with common areas remaining closed; food courts can open at 25% capacity adhering to the restaurant guidance for indoor dining.
- **Institutes of higher education** can re-open all permitted activities with required safety modifications except for residential housing which remains under current restrictions for the Spring semester.
- **Schools** are permitted to re-open for in-person instruction for students in grades 7-12 adhering to all state and county directives.
- **Private gatherings** can occur indoors with up to three separate households, with masking and distancing required at all times. People who are fully vaccinated can gather in small numbers indoors with other people who are fully vaccinated without required masking and distancing.

In alignment with the [state's reopening framework](#), mandatory masking, distancing and infection control practices remain in place for every business and permitted activity, and certain sectors have additional safety modifications required or recommended.

The county's Health Officer Orders and sector protocols have been [updated](#) to reflect the changes.

This shift to less restrictions shows that efforts by residents to slow the spread of COVID-19 is working. The L.A. County Department of Public Health is urging people to continue taking infection control precautions to prevent a resurgence of COVID-19 in our communities.

People should continue to wear face coverings when in public, continue practicing physical distancing and avoiding crowds and large gatherings. Fully vaccinated people should also continue with these practices, with some exceptions, including the ability to visit with other fully vaccinated people, indoors, without masks, per [new guidance](#).

Eligible for COVID-19 Vaccine Starting Today, Monday, March 15th

People ages 16-64 can be eligible if they are deemed to be at the very highest risk to get very sick from COVID-19 **EITHER** because they have one or more of the following severe health conditions:

- **Cancer**, current with weakened immune system
- **Chronic kidney disease**, stage 4 or above
- **Chronic pulmonary disease**, oxygen dependent
- **Down syndrome**
- **Solid organ transplant**, leading to a weakened immune system
- **Pregnancy**
- **Sickle cell disease**
- **Heart conditions**, such as heart failure, coronary artery disease, or cardiomyopathies (but not hypertension)
- **Severe obesity** (Body Mass Index ≥ 40 kg/m²)
- **Type 2 diabetes mellitus** with hemoglobin A1c level greater than 7.5%

OR

if, as a result of a developmental or other significant, high-risk disability, one or more of the following criteria applies:

- A COVID-19 infection is likely to result in severe life-threatening illness or death; OR
- Acquiring COVID-19 will limit the individual's ability to receive ongoing care or services vital to their well-being and survival; OR
- Providing adequate and timely COVID care will be particularly challenging as a result of the individual's disability



covid19.lacounty.gov

3/15/2021

COVID-19 Vaccine Eligibility Expands to People with High-Risk Underlying Conditions

Starting this week, vaccine eligibility in L.A. County opened up to people ages 16 through 64 who have underlying health conditions or disabilities that put them at the highest risk of becoming very sick from COVID-19. These conditions include:

- Cancer, with a current weakened immune system
- Chronic kidney disease, stage 4 or above
- Chronic pulmonary disease, oxygen dependent
- Down syndrome
- Solid organ transplant, leading to a weakened immune system
- Pregnancy
- Sickle cell disease
- Heart conditions, such as heart failure, coronary artery disease, or cardiomyopathies (but not hypertension)
- Severe obesity with a BMI of more than 40
- Type 2 diabetes with A1c level greater than 7.5%
- Or having a disability that: makes serious illness from COVID-19 likely; would, if positive for COVID-19, limit the person's ability to received care vital to their well-being and survival; or would make the treatment for COVID-19 particularly challenging.

Persons who are newly eligible and qualify for a COVID-19 vaccine due to a medical condition should note that during registration for a vaccine appointment, they will be asked to state that they have a high-risk medical condition or disability.

To protect confidentially, they will not be asked to disclose the specific condition. People getting vaccinated must provide documentation at all appointments with either a letter from a healthcare provider, a personal physician or an agency providing services or, if not available, the eligible person or their caretaker will be asked to sign an attestation.

All eligible persons will also need to provide identification (government ID not required) and proof that they live within L.A. County at their appointment.

For information about vaccine appointments in L.A. County and when your turn is coming up, to sign up for a vaccination newsletter, and much more, visit:

[VaccinateLACounty.com](https://www.vaccinatelacounty.com).

COVID-19 Community Updates

The City continues to monitor the spread of the novel coronavirus in Los Angeles County and distributes **COVID-19 Community Updates via listserv and social media on Thursdays**, though any major announcements in between will be shared with the community. The newsletter provides a range of information, such as up-to-date case numbers for the City, and the neighboring Peninsula cities, along with information on resources and services available.



If you haven't done so already, sign up for COVID-19 Community Updates by subscribing to the Breaking News listserv at rpvca.gov/notify. An archive of COVID-19 Community Updates is available at rpvca.gov/covidupdates.

A webpage on the City website with coronavirus updates, resources and information is continuously being updated at rpvca.gov/coronavirus.

And be sure to follow the City on [Nextdoor](#), [Facebook](#), [Twitter](#) and [Instagram](#)!

COVID-19 Cases

As of March 16, there are 1,210,905 confirmed cases of COVID-19 across Los Angeles County (population 10.17 million). The total includes 1,427 cases in Rancho Palos Verdes (population 42,747), 423 in Palos Verdes Estates (population 13,522), 268 in Rolling Hills Estates (population 8,113), 53 in Rolling Hills (population 1,940), and 63 in the unincorporated areas of the Peninsula (population 1,921). Countywide, 22,519 people have died.

According to the L.A. County Department of Public Health, 54 deaths have been reported in Rancho Palos Verdes. The City extends its deepest condolences to the families of these residents.

For a list of cases broken down by city, demographic characteristics, and settings, visit the L.A. County Department of Public Health's [Locations & Demographics page](#).

For an interactive dashboard with maps and graphs showing testing, cases and death data by community, poverty level, age, sex and race/ethnicity visit:

http://dashboard.publichealth.lacounty.gov/covid19_surveillance_dashboard/

An interactive dashboard of COVID-19 cases in the South Bay maintained by the City of Torrance is available at bit.ly/2XB1fv1. The dashboard reflects information sourced by the Los Angeles County Department of Public Health.

Vaccinations

According to the L.A. County Department of Public Health, as of March 8, 34.2% of Rancho Palos Verdes residents age 18 and over received at least one dose of the COVID-19 vaccine.

EMERGENCY PREPAREDNESS

Tips for Finding Residential Fire Insurance

If you are interested in purchasing, reviewing or replacing homeowners, condominium or mobile home insurance, it is important to shop and compare insurance products just like you would when shopping for any other important consumer purchase. The California Department of Insurance (CDI) provides several informational guides, tips and tools on its [Home/Residential Insurance website](#) to help you understand home/residential insurance so that you can make the best decision for your situation. The department also provides a [Home Insurance Finder Tool](#) to help residents find insurance companies and agents who are licensed to sell homeowners insurance, including in areas with higher fire risk.

Additionally, the CDI has provided the following Top Ten Tips for Finding Residential Insurance:

1. If you receive a nonrenewal notice, contact your insurer and ask if there are any specific actions you could take to mitigate your risk and retain your coverage.
2. If you think your nonrenewal was unfair, you may [file a complaint](#) with the CDI.
3. Don't let these actions delay starting your search for a new insurer. Make sure you have done everything you can do at your property to mitigate fire risk then start shopping for coverage.

4. In addition to contacting local agents or brokers in the vicinity of your home, you may wish to use the department's [Residential Insurance Company Contact List](#) that provides toll free numbers for over 50 insurers that are licensed to sell homeowners insurance.
5. If you need help from an agent that speaks a specific language, you can use the department's [Find an Agent or Broker](#) tool to find one near you.
6. You can also utilize the [Homeowner Premium Comparison Tool](#) and [Homeowner Coverage Comparison Tool](#) to compare premiums and coverages.
7. If your agent cannot help you find coverage with an insurer other than the FAIR Plan, you or your agent should contact other agents and brokers who represent other insurers. CDI's [Home Insurance Finder](#) tool can help you find other agents in your region or beyond and tells you which insurers they represent.
8. Understand that the [California FAIR Plan](#) is available to every homeowner as a last option for coverage. The maximum limit written by the FAIR Plan on a residential property **for all coverages combined** is \$3 million. Because the coverage provided by a FAIR Plan policy is very limited, it is recommended that you supplement the FAIR Plan policy with a [Difference in Conditions](#) policy.
9. If none of these options work for you, you may try obtaining coverage in the "surplus lines" market. Ask your agent or broker if they are able to obtain coverage with a surplus lines insurer or obtain coverage through a [surplus lines broker](#) (note, surplus lines insurers are not backed by the California Insurance Guarantee Association).
10. If you prefer to speak with a representative from CDI, residents can contact the Department's Ombudsman, Therese Gallagher at Leg-ombudsman@insurance.ca.gov or (916) 492- 3457, who is available to provide additional resources and guide residents through dealing with their insurance companies.

City Staff will continue to coordinate with CDI and local insurance underwriters to glean a better understanding of how the City can avoid premium hikes and reduced insurance availability for residents and neighborhoods interested in fire hardening homes.

Monthly Disaster Preparedness Messaging - Courtesy of the RPV Emergency Preparedness Committee

The City of Rancho Palos Verdes Emergency Preparedness Committee continues to provide monthly email messaging to residents with emergency preparedness information and educational materials.

To receive the committee's monthly messaging, be sure to sign up for the Emergency Notifications city listserv at rpvca.gov/notify. For additional information about emergency preparedness in the City of Rancho Palos Verdes, visit the City's website at rpvca.gov/emergency



Earthquake Preparedness

As we continue navigating the ongoing threat of the COVID-19 pandemic, our shared need to be prepared for a disaster doesn't go away. In fact, while we are all dealing with COVID-19, this year could be the year that "The Big One" hits. That is why it is important to be more prepared than ever to protect yourselves, your family and safeguard your home in the event of an earthquake, wildfire or other disasters.

Earthquakes can happen without warning and can result in injuries and damage to property and roads. Earthquakes can cause fires, tsunamis, or landslides. During a large earthquake, sudden and intense back and forth motions of several feet per second can cause the floor or the ground to jerk sideways out from under you, and every unsecured object around you could topple, fall, or become airborne, potentially causing serious injury.

By planning and practicing what to do if an earthquake strikes, you and your loved ones can learn to react correctly and automatically when the shaking begins.

Preparing BEFORE an Earthquake:

- ☐ Identify safe spots in each room of your home. Note sturdy tables, desks, and interior walls.

- ☐ Conduct practice drills with your family and know the safest locations in your home.
- ☐ Decide how and where your family will reunite, if separated during an earthquake.
- ☐ Choose an out-of-state friend or relative to contact so family and friends know your status.
- ☐ Secure your water heater and major appliances as well as tall, heavy furniture, hanging plants, mirrors, and picture frames.
- ☐ Make a supply kit that includes enough food and water for at least three days, a flashlight, a fire extinguisher and a whistle.
- ☐ Consider obtaining an earthquake insurance policy. A standard homeowner's insurance policy does not cover earthquake damage.

Staying Safe DURING an Earthquake

- If you are in a car, pull over and stop. Set your parking brake.
- If you are in bed, turn face down and cover your head and neck with a pillow.
- If you are outdoors, stay outdoors away from buildings.
- If you are inside, stay and do not run outside and avoid doorways.

Protecting Yourself During an Earthquake



DROP (OR LOCK)

- Wherever you are, drop down to your hands and knees and hold onto something sturdy. If you're using a wheelchair or walker with a seat, make sure your wheels are locked and remain seated until the shaking stops.

COVER

- Cover your head and neck with your arms. If a sturdy table or desk is nearby, crawl underneath it for shelter. If no shelter is nearby, crawl next to an interior wall (away from windows). Crawl only if you can reach better cover without going through an area with more debris. Stay on your knees or bent over to protect vital organs.

HOLD ON

- If you are under a table or desk, hold on with one hand and be ready to move with it if it moves. If seated and unable to drop to the floor, bend forward, cover your head with your arms and hold on to your neck with both hands.

Staying Safe AFTER an Earthquake:

If an earthquake has just happened, there can be serious hazards such as damage to buildings, leaking gas and water lines, or downed power lines.

- Expect aftershocks to follow the main shock of an earthquake.
- Check yourself to see if you are hurt and help others if you have training.
- If you are trapped, protect your mouth, nose and eyes from dust. Send a text, bang on a pipe or wall or use a whistle instead of shouting to help rescuers locate you.
- If you are in an area that may experience tsunamis, go inland or to higher ground immediately after the shaking stops.
- Text messages may be more reliable than phone calls.
- Once you are safe, listen to local news reports for emergency information and instructions via battery-operated radio, TV, social media, or cell phone text alerts.

Additional Resources:

- [Preparedness Now, The Great California Shakeout \(Video\)](#)
- [Ready.gov/earthquakes](#)
- [Lacounty.gov/emergency/earthquake-preparedness/](#)
- [Ready LA County: Preparing an earthquake emergency kit](#)



Weekly Crime Report Summaries

The City continues to provide residents with crime report summaries when they are made available. These weekly summaries include information about reported crimes and arrests made by the Lomita Sheriff's Station, including the City of Rancho Palos Verdes. The summaries are updated on the City website, distributed via Nextdoor and the Public Safety Alerts listserv, and included in the Weekly Administrative Report (see attachments).

These summaries can be found on the City website under City Services > Public Safety > Law Enforcement > [Crime Reports](#).

Additionally, the Los Angeles County Sheriff's Department maintains a website mapping incidences of Part 1 Crimes within its jurisdiction, including the City of Rancho Palos Verdes. To view the City's incidences on the website, please visit [CrimeMapping.com](#).

Security Camera Grant Program Extended

The City of RPV is excited to announce that the City Council has allocated additional funds for the Security Camera Grant Program. With continued efforts to enhance public safety, the City is extending the grant program to allow HOAs and neighborhoods to purchase Flock Safety license-plate reading cameras for the purpose of monitoring neighborhood entrances.

Information regarding the program and Flock Safety can be found on the [City website](#).

Applications are being accepted on a rolling basis and may close at any time as they will be accepted only until the budget limit has been reached.

Staff is readily available to answer any questions and provide assistance during the application process. For questions or to submit an application, please email McKenzie Bright, Administrative Analyst, at mbright@rpvca.gov.



HOA
SECURITY
CAMERA
GRANT
PROGRAM
EXTENDED



Tips to Prevent Vehicle Burglaries

Take steps today to prevent thefts from your vehicle. Residents are strongly encouraged to use "Lock It or Lose It" prevention tips every day. It only takes a matter of seconds for a thief to break into your car and grab your valuable items.



Look through the windows of your vehicle. What do you see? A bag on the passenger seat? A charging cord? A garage door opener? Change in a cup holder? Take it with you or remove it from plain view and be sure to close all windows and lock doors.

Follow these tips to help prevent vehicle burglaries:

1. Remove all valuable items from your car, including purses and electronics.
2. If you must leave valuables behind, put them in your trunk before you reach your destination. Avoid doing so while in plain view.
3. Set your alarm or anti-theft device.
4. Park in a locked garage or in well-lit areas.

If you see suspicious activity, report it immediately to the Lomita Sheriff's Station at 310-539-1661. In case of emergency, call or text 9-1-1.

Safe Drug Drop-off Locations

The public is urged to safely drop off unused prescription drugs at Public Disposal Locations. Saving unused or expired medications can lead to improper and illegal use if they fall into the wrong hands. A safer solution is to bring your old medications to designated drug drop-off locations.

To locate businesses registered with the U.S. Drug Enforcement Administration (DEA) to collect unused or expired medications, visit the DEA's Public Disposal Locations [Search Utility](#).

Attachments:

Text of AJR 2 – Page 58

SB 10 Letter – Page 60

City of RPV 2021 Legislative Positions – Page 62

FINANCE DEPARTMENT

Congratulations, Sovanna!

The City is pleased to announce the selection of Sovanna Proch as the Accounting Technician for the Finance Department. She successfully competed with other qualified candidates assessed by a panel of finance professionals from other local agencies. Sovanna holds a bachelor's degree in business administration concentrating in accounting from CSU Dominguez Hills. Sovanna started with the City as an intern in 2014 and was promoted to Account Clerk in 2016. As an Account Clerk, Sovanna helped with financial



system upgrades such as Munis and Trakit, prepared routine journal entries, helped with accounts payable and cashiering, provided administrative support, and much more. Sovanna is known for her willingness to help at any time and the Finance team is excited to see her advance into her new role. As an Accounting Technician, Sovanna will be involved more in general ledger, account reconciliations, and monthly closing.

FAC Meeting

The Finance Advisory Committee (FAC) of the City of Rancho Palos Verdes will conduct a virtual meeting on March 18 at 7 p.m. The agenda for this meeting includes:

- Presentation of the Section 115 Trust from PARS
- Receive the FY 2020-21 mid-year review
- Receive the FY 2021-22 budget assumptions and the FY 2021-22 proposed budget
- Discussion of a joint committee with the Infrastructure Management Advisory Committee (IMAC)



The meeting's agenda packet is posted on the City's website at <http://rpvca.gov/772/City-Meeting-Video-and-Agendas>

Please direct inquiries or written public comments on the meeting's agenda topics to Sovanna Proch at 310-544-5273 or at sovannap@rpvca.gov.

Pursuant to Section 3 of Executive Order N-29-20, issued by Governor Newsom on March 17, 2020, the regular meeting of the Finance Advisory Committee for March 18, 2021, will be conducted via teleconference using the Zoom platform. **For instructions on how to participate in the meeting, please fill out the form at rpvca.gov/participate.**

Business License Renewal 2021

In December 2020, the Finance Department mailed business license renewal notices to all registered City businesses. The renewal form and business license tax (if applicable) were due on January 31, 2021.



As of March 15, 2021, the City processed a total of 1,082 renewals or 58% of the 1,860 mailed business license renewals. Of the processed renewals, the City received \$517,066 or 60% of the total annual budgeted revenue of \$865,300.

Overall, compared to the prior year's processed revenue of \$734,400, the total revenue decreased by approximately \$217,400 or 30%, mainly from the reported lower 2020 gross receipts, and are as follows:

- \$97,000 or 44% is from the Terranea Resort.
- \$102,200 or 47% are a combination of lower 2020 gross receipts for in-city businesses and from the extension of the Small Business Financial Assistance Plan approved by the City Council to provide relief and promote the general welfare of the City's small business community experiencing negative financial impacts from the COVID-19 pandemic. The business license tax was waived for the small businesses within the City that generated less than \$1.5 million in gross receipts in 2020. Also, this category accounts for the waived business license tax for all home businesses.
- \$17,900 or 8% is a combination of less taxes collected from the outside businesses such as general contractors, sub-contractors, and delivery vehicles.

PUBLIC WORKS DEPARTMENT

Altamira Canyon Drainage Study Extension

An engineering team will be performing a land survey starting next week north of Narcissa Drive, in the Filiorum Reserve, and below Del Cerro Park. The land survey is to provide information for the Altamira Canyon Drainage and Erosion Control Study. The study will evaluate concepts for minimization of groundwater infiltration in the Portuguese Bend Landslide area. The surveying is projected to last for three weeks.

Rattlesnake Trailhead Gate Update

The City continues discussions with the Island View HOA to obtain an easement so that construction of the Rattlesnake Trailhead fence and gate can proceed.

Traffic Signal at Hawthorne Boulevard and Via Rivera Project Update

As you may have noticed, work began Tuesday on the new traffic signal project at Hawthorne Boulevard and Via Rivera. The contractor postponed the start of its work from Monday due to the rain. Over the next couple of weeks, the contractor will be laying out the work, confirming the location of underground utilities, and beginning foundation work. Regular updates will continue to be provided.



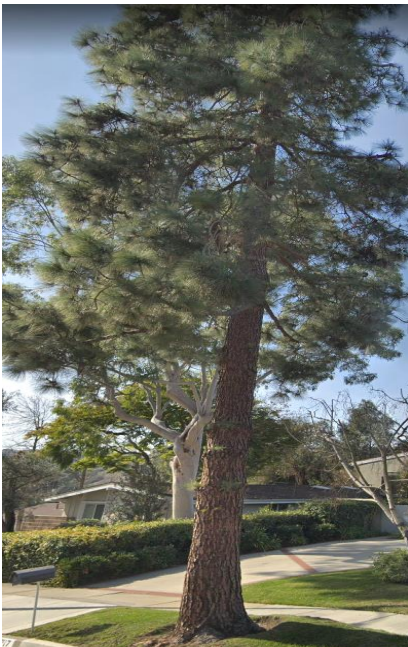
Maintenance Activities

Public Works continues daily cleaning and sanitizing of park facilities and restrooms to reduce the spread of COVID. In addition to regularly scheduled maintenance and repairs, Public Works performed the following:

- Vegetation Trimming, Landscaping, De-Weeding, and Park Maintenance
 - i. Right-of-way crew continues working and de-weeding along Palos Verdes

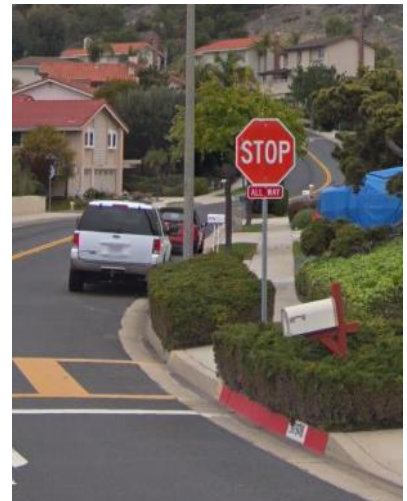
Drive East

- ii. The right-of-way team has also begun to de-weed along Palos Verdes Drive South beginning at the 25th Street border to Hawthorne Boulevard this week. Recent rains have created the perfect conditions for weeds to grow, and Public Works is diligently working to remove them as soon as possible.
- Storm and Tree Emergency Response
 - i. Recent storm response included removing a large pine tree on Crest Road West and a 45-60 foot pine tree on Shorewood Road.
 - ii. This weekend Public Works emergency on-call staff responded to a large pine tree down in the right-of-way along Hawthorne Boulevard between Silver Spur Road and Blackhorse Road. With assistance from the Lomita Sheriff's Station, Public Works closed down one northbound lane while emergency tree crews worked to clear out the 30-40 foot pine.
 - iii. Public Works also responded to a downed large branch on Los Verdes Drive.



- Graffiti Removal
 - i. Sixteen cases of graffiti were reported and removed this week.
 - ii. The RPV graffiti reporting app has received a new name and can now be downloaded for Android and Apple devices under the new name of "**RPV Clean**"

- Right-of-Way and Roadway Repairs
 - i. Public Works removed and ground down sidewalk deviations on Beachview Drive and Seawolf Drive.
 - ii. Public Works repaired several street signs that were down located on Via Rivera, Beachview Drive, El Miro, Palos Verdes Drive East, Forrestal Drive, and Pirate Drive.
 - iii. Due to the recent strong winds, Public Works installed new street sign panels on the main arterial intersection of Hawthorne Boulevard, Palos Verdes Drive West, and Palos Verdes Drive South. They were fabricated and installed this week.



- Irrigation Repairs

The irrigation technician made repairs at Calle Entradero, Eastview Park, Ryan Park, Hesse Park and Ladera Linda Park.





OSHA 10 Safety Training Course

The Public Works Maintenance Division is proud to announce that all three maintenance workers have successfully completed their OSHA 10 training. The 10-hour safety course covers general safety and health hazards for maintenance workers. This training will help keep staff safe and help them identify if a City vendor or contractor is working unsafely.

COMMUNITY DEVELOPMENT DEPARTMENT



South Bay Cities Council of Governments (SBCCOG) 21st Annual General Assembly

The SBCCOG will host its 21st Annual General Assembly on Thursday, March 18 from 9 a.m. to 4 p.m. This virtual conference will cover many local and regional issues, including transportation, housing, homelessness and economic development. The event is free and registration information is available by visiting the SCCOG website at <https://www.southbaycities.org/meetings-agendas/general-assemblies/21st-annual-general-assembly-0>

City Submits Comment Letter on Draft Environmental Impact Report (EIR) for the Los Angeles International Airport (LAX) Airfield and Terminal Modernization Project (ATMP)

On March 15, the City of Rancho Palos Verdes submitted a comment letter on the Draft Environmental Impact Report for the LAX Airfield and Terminal Modernization Project (ATMP). The ATMP proposes to construct a new aerial roadway, a new concourse next to Terminal 1, and a new terminal (Terminal 9) with improvements to the North Airfield. The City expressed to the lead agency, Los Angeles World Airports or LAWA, the primary concern about the project's impact on aircraft noise pollution caused by passenger jets overflying the City of Rancho Palos Verdes' airspace. The City also shared concerns expressed by partner cities and the SBCCOG about vehicle traffic impacts near LAX and how LAWA needs to prioritize efforts to disperse air traffic to their other regional

airports. Staff will continue to monitor and report on the proposed project. For more information, the comment letter is attached.

March 10 LAX Community Noise Roundtable Virtual Meeting Summary

The LAX Community Noise Roundtable, which aims to reduce and mitigate the adverse noise impacts that the users of Los Angeles International Airport create on surrounding communities, met virtually on March 10. A copy of the Los Angeles World Airports (LAWA) staff meeting agenda is available for review on the [LAWA website](#). The Federal Aviation Administration (FAA) presented a briefing on the results of a national Neighborhood Environmental Survey, which showed a substantial increase in the level of annoyance to aircraft noise relative to past surveys for those citizens who reside closest to airports. The Roundtable voted to send a letter supporting the survey to the FAA, which LAWA will post on its website. A briefing on the UC Davis Symposium, which covered a variety of aircraft noise subjects, was also presented and is available for review on LAWA website. The Roundtable was briefed on proposed aircraft noise legislation, which City Staff previously reported in Weekly Report No. 20-11. One newly introduced bill proposes a requirement that commercial air tours fly above an altitude of 1,500 feet and would prohibit flights over national parks and wildlife refuges. The Roundtable voted to support the proposed legislation because the bills would help to alleviate aircraft noise and/or pollution above scenic areas. LAWA will post the Roundtable support letter to its website. City Staff will continue to monitor the commercial air tours bill because of its aircraft noise reducing implications above and near the City of Rancho Palos Verdes' airspace. Lastly, LAWA distributed the passenger jet peninsula overflights and altitudes for January and February 2021 (attached). For more information, contact LAWA staff David Chan at (424) 646-6508 or email dchan@lawa.org.

Planning Commission Draft Agenda

Attached is the draft agenda for the March 23 Planning Commission meeting.

Attachments:

Comment letter on draft EIR for LAX ATMP – Page 65

Passenger jet peninsula overflights & altitudes for January and February 2021 – Page 69

Draft March 23rd Planning Commission Meeting Agenda – Page 71

RECREATION AND PARKS DEPARTMENT

Preserve Parking and Access Issues: Actions Taken at March 16 City Council Meeting

Managing Preserve access and parking remains a top City priority. The City Council considered the following actions to address these important community concerns at its March 16 meeting. Below are the actions taken by the City Council:

1. Received and filed a report on carrying capacity for the Palos Verdes Nature Preserve based on other open space agencies;
2. Council took no action on the following item: Direct Staff to issue a request for proposals for a consultant to conduct a capacity management assessment for the Preserve to help assess impacts of public access to the Preserve, develop management recommendations to improve current conditions, and develop metrics and standards by which to evaluate future conditions;
3. Approved the Memorandum of Understanding between the City and the Palos Verdes Peninsula Transit Authority to operate the pilot Preserve Shuttle Program for a period of three months, as to form approved by the City Attorney;
4. Approved an appropriation of \$20,000 in Proposition A Funds for the pilot Preserve Shuttle Program;
5. Received and filed Willdan Engineering's traffic study prepared specifically to address vehicle movements at parking zones B and F along Crenshaw Boulevard; and
6. Adopted Resolution No. 2021-10_ implementing Willdan Engineering's recommendations to:
 - a. On Crenshaw Boulevard for a distance of 155 feet north from the center of Park Place;
 - b. On Crenshaw Boulevard for a distance of 105 feet north from the center of Valley View Road;
 - c. On Crenshaw Boulevard for a distance of 115 feet south of the St. John Fisher Church's driveway; and
 - d. On Crenshaw Boulevard for a distance of 105 feet north of the St. John Fisher Church's driveway.

7. Adopted Resolution No. 2021-11 to extend the temporary parking restrictions on six parking spaces within Zone B until May 31, 2021.
8. Received and filed a status update on search engine optimization conducted by Tripepi Smith.

The March 16 City Council agenda and staff report is available on the [City website](#).

For more information, please direct all inquiries to Katie Lozano, Senior Administrative Analyst, at (310) 544-5267 or via e-mail at trails@rpvca.gov

Rattlesnake Gate Update

The City had planned to begin the installation of the Rattlesnake Trail gate and construct pilasters while waiting for manufacturing of the custom fence and gate; expecting that the pilaster construction would conclude when the fence and gate arrived.

Shortly after the contractor mobilized and staked-out the fence alignment, Staff learned that a larger easement than originally expected was needed. This means that the pilasters cannot be installed while waiting for fence fabrication. Staff is continuing discussions with the Island View HOA to secure the easement so that construction can proceed. Updates will continue to be provided.

ParkMobile Parking App Project Update

The City Council approved an agreement with ParkMobile on January 19 to provide app-based parking services at Del Cerro Park and sections of Crenshaw Boulevard south of Crest Road.

The system, which utilizes in-ground sensors at each parking space, requires users to make their reservation a minimum of two hours in advance. This approach will allow park/Preserve visitors to drive directly to a space in a designated zone without having to circle in the area, reducing traffic impacts in the area. Drop-in parking without a reservation will not be allowed and may result in a citation.

To provide public awareness of the system, the implementation of the app will be rolled out gradually. This will help the public to become aware of the new parking requirements and allow staff to study the program and gather data on average length of stays, total occupancy, comparative use of zones and other factors. This will also allow Staff and ParkMobile to refine the operating system as needed. Signs, listserv messages

and social media posts will be used to inform the public. Warnings and educational fliers about the parking app will be issued initially in lieu of citations.

The January 19 plan noted a potential total of 84 spaces on Crenshaw Boulevard and on Park Place. The City Council received the results of an initial traffic study at its March 16 meeting. Based on that analysis, approximately 14 spaces will be eliminated. Concurrently, City and ParkMobile attorneys are working out final details of the agreement. The target date for installing the sensors and fully initiating the app-based system has been moved to end of May.

Virtual Whale of a Day – April 10, 2021

In partnership with Los Serenos de Point Vicente, the City of Rancho Palos Verdes, is thrilled to announce Whale of a Day 2021, a VIRTUAL event! This year's event will showcase all the best our community has to offer while continuing to educate about the migration of the Pacific gray whale.

All features will be made available on our website, Saturday April 10 and will remain posted for your viewing pleasure! Mark your calendars today, and join us for a Virtual Whale of a Day.

To sign up for an event activity bag that will include crafts and other goodies, register at apm.activecommunities.com/rpv



Activity bag pick up will be at Rancho Palos Verdes Hall, 30940 Hawthorne Boulevard from March 15-April 2.

Event Details

- Debut of the NEW Point Vicente Interpretive Center exhibits

- Puppet Show “Guillermo goes to Mexico”
- Abalone Cove tide pool tour
- Take part in the silent auction April 1-10
- Native Plant Garden tour
- Whale education
- Story and craft demo (be sure to pick up an activity bag at RPV City Hall)
- Learn about animal pelts and skulls
- Entertainment and more!

New Exhibits at the Point Vicente Interpretive Center

While the Point Vicente Interpretive Center museum has been closed, Los Serenos docents and City Staff have been hard at work. We are pleased to announce the installation of four new exhibits is complete.

The exhibits: A World in Motion, Skyriders, Ancient Mariners & Superpowers, focus on navigation, birds, gray whales and migration.

The exhibits will be highlighted at Virtual Whale of a Day, Saturday, April 10. Join us by visiting www.whaleofaday.com



April Re-Opening of PVIC!

This week, the L.A. County Department of Public Health gave approval for museums to reopen at 25% capacity. PVIC is currently in the process of implementing all guidelines and protocols set by the county. We look forward to welcoming back visitors in early April.

Filming in RPV

A TV drama prepped at Terranea Resort March 11 to 13 from 7 a.m. to 7 p.m., and filmed March 15 from 7 a.m. to 9 p.m. and March 16 from 7 a.m. to 11 p.m. Set break down will take place on March 17 from 7 a.m. to 7 p.m.

Revised Guidance and Safety Measures for Outdoor Recreation and Private Gatherings

On Monday, January 25, the Los Angeles County Department of Public Health lifted its *Targeted Temporary Safer at Home Order*. Public parks and outdoor spaces are ideal places to gather with your household and participate in recreation activities, as they can help reduce the spread of the virus from one person to another. When participating in a gathering or other activity, all park rules must be followed.

Rancho Palos Verdes Park Rules: <http://rpvca.gov/1333/Outdoor-Group-Picnic-Rules>

Parks and Trails Open

Parks and trails remain open for recreation use, including running, walking, and playing outdoors with members of the same household. All activities where individuals will be or can be in contact with non-household members require an appropriate face-covering unless medically exempt.

Playgrounds Open

City of Rancho Palos Verdes playgrounds are open.

Private Group Gatherings Permitted

In accordance with the revised L.A. County Health Officer Order, private outdoor gatherings outdoors of up to three households and a total of 15 people are permitted. All attendees must wear a face covering and maintain physical distancing from those not in their household. In order to lower the risk of exposure to COVID-19, remember to keep gatherings short (no more than two hours), practice good hand hygiene, use single-serve disposable containers and refrain from activities that may increase the risk of COVID-19 transmission, such as singing, chanting, shouting, or physical exertion.

RPV Park Rules: <http://rpvca.gov/1333/Outdoor-Group-Picnic-Rules>

Hunt for the Golden Egg

Welcoming all children 1-10 years old. Eight golden eggs will be hidden daily from March 29 – April 3 in the lower field located at the Ladera Linda Community Center. The eggs can be found from 12-5 p.m. only. If a golden egg is found, it can be exchanged for a prize basket at the Community Center office between 12-5 p.m. One basket per household, with plenty of goodies for all to enjoy.



THE CITY OF RANCHO PALOS VERDES
INVITES YOU TO

HUNT FOR THE GOLDEN EGG

2021

March 29th - April 3rd
Ladera Linda Community Center-Lower Field
32201 Forrestal Drive RPV, CA 90275

8 golden eggs will be hidden daily 3/29-4/3.
Please hunt for the eggs from 12-5pm only.

Ages 1-10 years old

Once you find a golden egg, take it to the Community
Center Office between 12-5pm, to exchange for a prize.
(Limit one basket per household)

For more info: parks@rpvca.gov or (310) 544-5260

If you are a person with a disability and need an accommodation to
participate in programs, services, activities and meetings, contact the City's
ADA Coordinator/Risk Manager at 310-683-3157, adarequests@rpvca.gov,
30940 Hawthorne Blvd., Rancho Palos Verdes, CA 90275, at least 48 hours
in advance to request an auxiliary aid or accommodation.

Verde in The Park

Rancho the Elf's cousin, "Verde" the Leprechaun, is visiting our parks in March. View the flyer to visit a different park each week and follow the little leprechaun tracks to the pot of gold.



"Verde" in the Park Hunt for Tracks!

**Rancho the Elf's distant cousin,
"Verde" the Leprechaun,
will be visiting our parks and causing
mischievous while we are fast asleep.
Visit the parks below to discover the
chaos he has caused!
Can you spot his tracks?**

Here is the schedule where patrons can find Verde's tracks:

- o March 1-7: Eastview Park
- o March 8-14: Ladera Linda Community Center
- o March 15-21: PVIC/ Lower Point Vicente Park
- o March 22-28: Robert E. Ryan Community Park
- o March 29-April 3: Fred Hesse Jr. Community Park

If you are a person with a disability and need an accommodation to participate in programs, services, activities and meetings, contact the City's ADA Coordinator/Risk Manager at 310-683-3157, adarequests@rpvca.gov, 30940 Hawthorne Blvd., Rancho Palos Verdes, CA 90275, at least 48 hours in advance to request an auxiliary aid or accommodation.

**Preserve and Beach Weekend Activity:
Saturday, March 13th, 2021 – Sunday, March 14th, 2021**

Public Contacts: 664

Notice to Appear Citations Issued: 2

Parking Citations Issued: 20

Violations observed (usually corrected and/or warning given): 62

In addition to patrols, regular maintenance, and educating the public on Preserve rules and regulations, the following activity took place during this reporting period:

OSM is monitoring group activity and hikes over social media for group size, and authorized activities in the Preserve. Groups in violation of the City's Municipal Code are contacted to educate and correct their behavior, and Rangers continue to patrol and monitor these activities.

Groups Contacted: 1

Location(s) of Activities: Vista del Norte Reserve

Abalone Cove Reserve:

From March 8 to March 15, the following MPA contacts, all from Abalone Cove were made:

- Number of MPA violations by group observed or reported: 1 fishing, 1 collecting with intent to take, 2 collecting without intent to take
- Number of individual violators spoken to by OSM staff and Rangers: 4 fishing, 2 collecting with intent to take, 3 collecting without intent to take
- Estimated number of animals prevented from being poached: 35
- Number of individuals deterred from poaching prior to it happening: 3

The City is part of the Los Angeles Marine Protected Areas (MPA) Collaborative Network, among other local agencies, and we have received support from them including pamphlets, stickers, educational training (limited due to COVID-19) and signage. Tracking our observations goes a long way to obtaining resources and identifying areas where we can improve.

In the fall of 2020, the MPA Collaborative Network and the Los Angeles MPA Collaborative hosted two Community Compliance Forums to hear from local stakeholders about their MPA, ocean, and coastal compliance concerns and ideas for

solutions. The forums are one part of a multi-year Compliance Initiative funded by the Ocean Protection Council and in partnership with the California Department of Fish and Wildlife. Attached you will find a report summarizing the input gathered during the [Los Angeles Forums](#) as well as a [statewide summary of all forums](#). Reports for all forums can be found on individual Collaborative webpages as well as in the Project Library on our website (mpacollaborative.org).

Forrestal Reserve:

On March 13, Rangers were notified by residents of an intoxicated male who was seen loitering near homes adjacent to the Reserve. The male had informed residents he had set up camp in the hills. Sheriff's deputies were called to assist in the matter.

Ocean Trails Reserve:

OSM staff continues to monitor and address illegal paragliding activity. Launching from or landing on City property is a misdemeanor. Associated violations include vandalism, unauthorized access, trampling of native vegetation, noncompliance with a public officer, and intentional removal/take of habitat. Staff will continue to reinforce closures with natural barriers, and ensure signage is in place to educate patrons. All authorized trails are marked on Reserve maps, which are available on the City's website under [Nature Preserve Information and Trail Maps](#) as well as on major trailheads. Please call the Ranger Hotline to report violations: 310-491-5775.



Portuguese Bend Reserve:

A new sign was installed on Fire Station Trailhead to remind visitors of limited access and City of RPV property. Patrons are encouraged to plan ahead, check out the City website for trail maps to help plan their route as they safely explore the hiking trails.



Staff continues to monitor and remove all counts of graffiti on "Residential Quiet Zone" signs on Burma Road.

On March 11, Rangers observed a female walking along Palos Verdes Drive South and occasionally into oncoming traffic. Vehicles were forced to swerve dangerously in an effort to avoid hitting her. Sheriff's deputies were called to assist.

Three Sisters Reserve:

Staff reported three separate counts of graffiti on City signs and trailheads. All counts were removed accordingly. Staff will continue to patrol all areas to deter future vandalism and remove it in a timely manner.

Vicente Bluffs Reserve:

OSM installed a new MPA sign (generously provided by the Los Angeles MPA Collaborative) to educate visitors on the no fishing or collecting regulations at the Pelican Cove area in Vicente Bluffs Reserve.



Parks and Preserve Weekend Report

Beaches, parks, and trails, including the Palos Verdes Nature Preserve, have been open since May 13 with physical distancing, in accordance with guidance from the County of Los Angeles. Please go to www.rpvca.gov for further information.

Below is a public usage summary report over the past weekend.

PALOS VERDES NATURE PRESERVE and ABALONE COVE

Public Contacts: 664

HESSE PARK - walking paths, playground, and grass area

Total park attendance: 1,510

Total interactions with the public: 31

RYAN PARK - walking paths, playground, basketball court, and grass area

Total park attendance: 534

Total interactions with the public: 53

LADERA LINDA PARK - walking paths, playground, basketball and paddle tennis courts, and grass area

Total park attendance: 321

Total interactions with the public: 22

EASTVIEW PARK - walking paths, playground, dog park and grass area

Total park attendance: 567

Total interactions with the public: 95

LOWER POINT VICENTE PARK - walking paths and grass area

Total park attendance: 3,826

Total interactions with the public: 56

Total Weekend Attendance*: 7,422

Total Interactions with Public*: 257

*Park attendance numbers reflect an approximate total park attendance over the past weekend. The attendance numbers are captured by park staff during walks around the park grounds at regular intervals throughout the day.

Attachments:

California Statewide Compliance Forum Report – Page 74

Los Angeles Compliance Forum Report – Page 96




March 2021

Sunday	Monday	Tuesday	Wednesday	Thursday	Friday	Saturday
	1	2 7:00 pm – City Council Meeting (Hybrid In-Person/Virtual Meeting) @ Hesse Park	3	4	5	6
7	8 6:30 pm – TSC Special Meeting (Virtual Meeting)	9 7:00 pm – Planning Commission Meeting (Virtual Meeting)	10 5:30 pm – ACLAD Board Meeting (Virtual Meeting)	11	12	13
14	15 6:00 pm – IMAC Meeting (Virtual Meeting)	16 7:00 pm – City Council Meeting (Hybrid In-Person/Virtual Meeting) @ Hesse Park	17 12:00 pm – Mayor’s Lunch @ The Depot (Mayor Alegria) 1:30 pm – Sanitation District Meeting (Mayor Alegria)	18 7:00 pm – Finance Advisory Committee Meeting @ TBD 7:00 pm – Emergency Preparedness Committee (Virtual Meeting)	19	20
21	22 5:00 pm-Klondike Canyon Meeting @ Ladera Linda Community Center 6:30 pm – TSC Meeting (Virtual Meeting) Cancelled	23 7:00 pm – Planning Commission Meeting (Virtual Meeting)	24	25 6:00pm – Civic Center Advisory Committee (Virtual Meeting)	26 8:00 am—Mayor’s Breakfast @ Avenue Italy (Mayor Pro Tem Bradley/ Councilwoman Ferraro)	27
28	29 6:00 pm – IMAC Special Meeting (Virtual Meeting)	30 6:00 pm – City Council Special Meeting – Budget Workshop (Hybrid In-Person/Virtual Meeting) @ Hesse Park	31			



April 2021

Sunday	Monday	Tuesday	Wednesday	Thursday	Friday	Saturday
				1	2	3
4	5	6 7:00 pm – City Council Meeting (Hybrid In-Person/Virtual Meeting) @ Hesse Park	7	8	9	10  Whale of a Day (Virtual Event) www.whaleofaday.com
11	12 6:00 pm – City Council Special Meeting – CIP Workshop (Hybrid In-Person/Virtual Meeting) @ Hesse Park	13 7:00 pm – Planning Commission Meeting (Virtual Meeting)	14 5:30 pm – ACLAD Board Meeting (Virtual Meeting) 6:00 pm – Nature Preserve Public Forum (Virtual Meeting)	15 7:00 pm – Finance Advisory Committee Meeting (Virtual Meeting) 7:00 pm – Emergency Preparedness Committee (Virtual Meeting)	16	17 8:00 am–11:00 am – Document Shredding, Event @ City Hall Parking Lot
18	19 6:00 pm – IMAC Meeting (Virtual Meeting)	20 7:00 pm – City Council Meeting (Hybrid In-Person/Virtual Meeting) @ Hesse Park	21 12:00 pm – Mayor’s Lunch @ The Depot (Mayor Alegria) 1:30 pm – Sanitation District Meeting (Mayor Alegria)	22 6:00pm – Civic Center Advisory Committee (Virtual Meeting)	23 8:00 am—Mayor’s Breakfast @ TBD (Mayor Alegria/Councilman Cruikshank)	24
25	26 5:00 pm-Klondike Canyon Meeting @ Ladera Linda Community Center	27 7:00 pm – Planning Commission Meeting (Virtual Meeting)	28	29	30	



May 2021

Sunday	Monday	Tuesday	Wednesday	Thursday	Friday	Saturday
						1 9:00 am–3:00 pm – Household Hazardous Waste/Electronic Waste Roundup Event@ City Hall Yard (Tentative)
2	3	4 7:00 pm – City Council Meeting @ Hesse Park	5	6	7	8
9	10	11 7:00 pm – Planning Commission Meeting @ Hesse Park	12 5:30 pm – ACLAD Board Meeting (Virtual Meeting)	13	14	15
16	17 6:00 pm – IMAC Meeting @ City Hall Community Room	18 7:00 pm – City Council Meeting @ Hesse Park	19 12:00 pm – Mayor’s Lunch @ The Depot (Mayor Alegria) 1:30 pm – Sanitation District Meeting (Mayor Alegria)	20 7:00 pm – Finance Advisory Committee Meeting @ TBD 7:00 pm – Emergency Preparedness Committee @ City Hall Community Room	21	22
23 5:00 pm-Klondike Canyon Meeting @ Ladera Linda Community Center 6:30 pm – TSC Meeting @ City Hall Community Room	24	25 7:00 pm – Planning Commission Meeting @ Hesse Park	26	27 6:00pm – Civic Center Advisory Committee @ City Hall Community Room	28 8:00 am—Mayor’s Breakfast @ TBD (Mayor Alegria/Mayor Pro Tem Bradley)	29
30	31 Memorial Day – City Hall Closed					

TENTATIVE AGENDAS

Agenda items listed below will be presented to the City Council for their consideration

DEPARTMENT	AGENDA SECTION	AGENDA TITLE	ESTIMATED TIME
March 30, 2021			
SPECIAL MEETING - BUDGET WORKSHOP 6:00 PM (TUESDAY)			
April 6, 2021			
CLOSED SESSION/STUDY SESSION - 6:00 PM			
	CLOSED SESSION		
REGULAR MEETING - 7:00 PM			4:30
ADMIN	CONSENT CALENDAR	Minutes	
ADMIN	CONSENT CALENDAR	Letter in Support of AJR2 (Assembly Joint Resolution on DDT matters)	
ADMIN	CONSENT CALENDAR	Opposition Letter AB377	
ADMIN	CONSENT CALENDAR	Award of PSA with Piaskey Solutions for Western Avenue Economic Development	
PUBLIC WORKS	CONSENT CALENDAR	Peninsula Water Management Group Amendment to the CIMP MOU and Revision of EWMP and RAA MOU	
PUBLIC WORKS	CONSENT CALENDAR	Ordinance to Amend RPVMC Chapter 15.42 Floodplain Management	
PUBLIC WORKS	CONSENT CALENDAR	Receive Performance Audit of EDCO	
PUBLIC WORKS	CONSENT CALENDAR	NOC for the Coastal Bluff Fence	
PUBLIC WORKS	CONSENT CALENDAR	Award of Construction Contract to NR Development, Inc. and PSA for Inspection Services to Southern California Electrical Firm for Caddington Area 9	
PUBLIC WORKS	CONSENT CALENDAR	Amendment No. 2 to MOU with Peninsula Cities for MS4 Permit	
PUBLIC WORKS	CONSENT CALENDAR	Amendment to Siemens Industry Streetlight Maintenance Contract	
FINANCE	CONSENT CALENDAR	Treasury Report	
FINANCE	CONSENT CALENDAR	Warrant Register	1:00
CDD	PUBLIC HEARING	Consider Planning Entitlements for Ladera Linda Community Center & Park Project	2:30
PUBLIC WORKS	REGULAR BUSINESS	Adopt Engineering and Traffic Survey	0:30
April 12, 2021			
SPECIAL MEETING - CIP WORKSHOP 6:00 PM (MONDAY)			
April 20, 2021			
INTERVIEWS/CLOSED SESSION/STUDY SESSION - 6:00 PM			

TENTATIVE AGENDAS

Agenda items listed below will be presented to the City Council for their consideration

DEPARTMENT	AGENDA SECTION	AGENDA TITLE	ESTIMATED TIME
	CLOSED SESSION	NO ITEMS SCHEDULED AT THIS TIME	
	SPECIAL MEETING	Interviews EPC Vacancies	
REGULAR MEETING - 7:00 PM			4:30
ADMIN	CONSENT CALENDAR	Minutes	1:00
FINANCE	CONSENT CALENDAR	Warrant Register	
REC & PARKS	CONSENT CALENDAR	Preserve 2019 Annual Report	
PUBLIC WORKS	CONSENT CALENDAR	Accept ADA Transition Plan	
FINANCE	PUBLIC HEARING	Consider Adopting Fees Cost Study Resolution	0:45
ADMIN	REGULAR BUSINESS	Review of Cal Water Rate Increase	0:20
ADMIN	REGULAR BUSINESS	Appoint Members to the EPC	0:10
ADMIN	REGULAR BUSINESS	City Council Policy Manual Review	1:00
ADMIN	REGULAR BUSINESS	Annual Review of Cox Communications	0:20
PUBLIC WORKS	REGULAR BUSINESS	Completion of Preserve Acacia Removal Project	0:10
PUBLIC WORKS	REGULAR BUSINESS	Provide Direction on Residential Solid Waste Contract	0:15
May 4, 2021			
CLOSED SESSION/STUDY SESSION - 6:00 PM			
	CLOSED SESSION	NO ITEMS SCHEDULED AT THIS TIME	
REGULAR MEETING - 7:00 PM			4:30
ADMIN	CONSENT CALENDAR	Minutes	1:00
FINANCE	CONSENT CALENDAR	Treasury Report	
FINANCE	CONSENT CALENDAR	Warrant Register	
FINANCE	CONSENT CALENDAR	Employee Compensation Report	
PUBLIC WORKS	CONSENT CALENDAR	Award Consultant contract for Residential Solid Waste	
CDD	PUBLIC HEARING	Consider Adopting Ord to comply with Coastal Sage Scrub	0:15
CDD	PUBLIC HEARING	Consider Planning Entitlements and Financing options for Ladera Linda Community Center & Park Project	1:30
CDD	REGULAR BUSINESS	Informational Report on City Council Policy No. 49 on View Corridors	0:30
ADMN	REGULAR BUSINESS	Employee Classification and Compensation Study	0:30
ADMIN	REGULAR BUSINESS	Sakura Sister City Update	0:15
May 18, 2021			

TENTATIVE AGENDAS

Agenda items listed below will be presented to the City Council for their consideration

DEPARTMENT	AGENDA SECTION	AGENDA TITLE	ESTIMATED TIME
CLOSED SESSION/STUDY SESSION - 6:00 PM			
	CLOSED SESSION	NO ITEMS SCHEDULED AT THIS TIME	
REGULAR MEETING - 7:00 PM			4:00
ADMIN	CONSENT CALENDAR	Minutes	1:00
FINANCE	CONSENT CALENDAR	Warrant Register	
	PUBLIC HEARING		
PUBLIC WORKS	REGULAR BUSINESS	West Basin Water District Recycle Water report	0:30
FINANCE	REGULAR BUSINESS	Preliminary Budget Review	0:30
PUBLIC WORKS	REGULAR BUSINESS	Consider Lower Pt. Vicente Master Plan	1:00
PUBLIC WORKS	REGULAR BUSINESS	Reassess Encroachment Permit Issuance Protocols	0:30
June 1, 2021			
CLOSED SESSION/STUDY SESSION - 6:00 PM			
	CLOSED SESSION	NO ITEMS SCHEDULED AT THIS TIME	
REGULAR MEETING - 7:00 PM			3:50
ADMIN	CONSENT CALENDAR	Minutes	1:00
PUBLIC WORKS	CONSENT CALENDAR	Contract extension for Ardurra for Master Plan for Lower Point Vicente Park Improvements	
FINANCE	CONSENT CALENDAR	Treasury Report	
FINANCE	CONSENT CALENDAR	Warrant Register	
FINANCE	PUBLIC HEARING	Conduct a public hearing on the Fiscal Year 2021-22 Draft Budget for all City's funds and the Five-Year Capital Improvement Program	0:15
PUBLIC WORKS	PUBLIC HEARING	ABCove Sewer Financing Options	1:30
ADMIN	REGULAR BUSINESS	Appointment of Commission and Committee Chairs	0:10
PUBLIC WORKS	REGULAR BUSINESS	Consider License Agmt w/ So Cal Gas for Small Wireless Facilities	0:15
FINANCE	REGULAR BUSINESS	Receive and file the draft 2022 Five-Year Financial Model (2022 Model)	0:10
June 15, 2021			
CLOSED SESSION/STUDY SESSION - 6:00 PM			
	CLOSED SESSION	NO ITEMS SCHEDULED AT THIS TIME	
REGULAR MEETING - 7:00 PM			1:55

TENTATIVE AGENDAS

Agenda items listed below will be presented to the City Council for their consideration

DEPARTMENT	AGENDA SECTION	AGENDA TITLE	ESTIMATED TIME
ADMIN	CONSENT CALENDAR	Minutes	1:00
FINANCE	CONSENT CALENDAR	Warrant Register	
FINANCE	CONSENT CALENDAR	Approve the ongoing professional services agreements and approve blanket purchase orders for FY 2021-22 in excess of \$25,000	
FINANCE	CONSENT CALENDAR	Adopt a resolution to establish the City's appropriation limit for Fiscal year 2021-22	
FINANCE	CONSENT CALENDAR	Adopt the FY 2021-22 Investment Policy for the City of Rancho Palos Verdes	
FINANCE	PUBLIC HEARING	Conduct a public hearing on the Fiscal Year 2021-22 Draft Budget for all City's funds and the Five-Year Capital Improvement Program (Cont. from June 1st)	0:10
ADMIN	REGULAR BUSINESS	Adoption of Fy 21-22 City Council Goals	0:15
FUTURE AGENDA ITEMS - Identified at Council meetings and pending receipt of memo from Councilmember			
<u>Request Date:</u>	<u>Requested By:</u>	<u>Item:</u>	
8/6/2019	Dyda	Policy on recording/memorializing Council's requests/direction for future agenda items.	
FUTURE AGENDA ITEMS TO BE AGENDIZED			0:15
<u>Request Date:</u>	<u>Requested By:</u>	<u>Item:</u>	<u>Scheduled Date:</u>
7/16/2019	Dyda	Abalone Cove Sewer Financing Options	6/1/2021
10/15/2019	Cruikshank	West Basin Water District Recycle Water report	5/18/2021
7/21/2020	Alegria	Reassess Encroachment Permit Issuance Protocols	5/18/2021
2/16/2021	Cruikshank	Informational Report on City Council Policy No. 49 on View Corridors	5/4/2021
3/2/2021	Bradley	Review of City Council Policy Manual	4/20/2021
3/16/2021	Cruikshank	Review of Cal Water Rate Increase	4/20/2021
CITY MANAGER REPORT			0:15

RPVtv Cox 33 / FIOS 38 Programming Schedule Guide Schedule - 3/21/2021 to 3/27/2021

	Sunday	Monday	Tuesday	Wednesday	Thursday	Friday	Saturday
	March 21, 2021	March 22, 2021	March 23, 2021	March 24, 2021	March 25, 2021	March 26, 2021	March 27, 2021
6:00 AM - 6:30 AM	Fitness Programming	Fitness Programming	Fitness Programming	Fitness Programming	Fitness Programming	Fitness Programming	Fitness Programming
6:30 AM - 7:00 AM	Fitness Programming	Fitness Programming	Fitness Programming	Fitness Programming	Fitness Programming	Fitness Programming	Fitness Programming
7:00 AM - 7:30 AM	RPV City Talk	RPV City Talk	RPV City Talk	RPV City Talk	RPV City Talk	RPV City Talk	RPV City Talk
7:30 AM - 8:00 AM	Around the Peninsula	Around the Peninsula	Around the Peninsula	Around the Peninsula	Around the Peninsula	Around the Peninsula	Around the Peninsula
8:00 AM - 8:30 AM	Peninsula Seniors Connections	Peninsula Seniors Connections	Peninsula Seniors Connections	Peninsula Seniors Connections	Peninsula Seniors Connections	Peninsula Seniors Connections	Peninsula Seniors Connections
8:30 AM - 9:00 AM							
9:00 AM - 9:30 AM	Fitness Programming	Fitness Programming	Fitness Programming	Fitness Programming	Fitness Programming	Fitness Programming	Fitness Programming
9:30 AM - 10:00 AM	Fitness Programming	Fitness Programming	Fitness Programming	Fitness Programming	Fitness Programming	Fitness Programming	Fitness Programming
10:00 AM -10:30AM	Lectures with Lianne	Lectures with Lianne	Lectures with Lianne	Lectures with Lianne	Lectures with Lianne	Lectures with Lianne	Lectures with Lianne
10:30 AM - 11 AM							
11:00 AM -11:30 AM	RPV City Talk	RPV City Talk	RPV City Talk	RPV City Talk	RPV City Talk	RPV City Talk	RPV City Talk
11:30 AM -12:00PM	Around the Peninsula	Around the Peninsula	Around the Peninsula	Around the Peninsula	Around the Peninsula	Around the Peninsula	Around the Peninsula
12:00 PM -12:30PM	Aviation Archaeology Ralph Wetterhahn	Aviation Archaeology Ralph Wetterhahn	Aviation Archaeology Ralph Wetterhahn	Red Car History Bob Henry	Red Car History Bob Henry	Red Car History Bob Henry	Red Car History Bob Henry
12:30 PM - 1:00PM							
1:00 PM - 1:30PM	Peninsula Seniors Connections	Peninsula Seniors Connections	Peninsula Seniors Connections	Peninsula Seniors Connections	Peninsula Seniors Connections	Peninsula Seniors Connections	Peninsula Seniors Connections
1:30 PM - 2:00PM							
2:00 PM - 2:30PM	Fitness Programming	Fitness Programming	Fitness Programming	Fitness Programming	Fitness Programming	Fitness Programming	Fitness Programming
2:30 PM - 3:00PM	Fitness Programming	Fitness Programming	Fitness Programming	Fitness Programming	Fitness Programming	Fitness Programming	Fitness Programming
3:00 PM - 3:30PM	RPV City Talk	RPV City Talk	RPV City Talk	RPV City Talk	RPV City Talk	RPV City Talk	RPV City Talk
3:30 PM - 4:00 PM	Around the Peninsula	Around the Peninsula	Around the Peninsula	Around the Peninsula	Around the Peninsula	Around the Peninsula	Around the Peninsula
4:00 PM - 4:30PM	RPV City Talk	RPV City Talk	RPV City Talk	RPV City Talk	RPV City Talk	RPV City Talk	RPV City Talk
4:30 PM - 5:00PM	Around the Peninsula	Around the Peninsula	Around the Peninsula	Around the Peninsula	Around the Peninsula	Around the Peninsula	Around the Peninsula
5:00 PM - 5:30PM	Playing the Field- Local	Playing the Field- Local	Playing the Field- Local	Playing the Field- Local	Playing the Field- Local	Playing the Field- Local Edition	Playing the Field- Local
5:30 PM - 6:00PM	Fitness Programming	Fitness Programming	Fitness Programming	Fitness Programming	Fitness Programming	Fitness Programming	Fitness Programming
6:00 PM - 6:30PM	RPV City Talk	RPV City Talk	RPV City Talk	RPV City Talk	RPV City Talk	RPV City Talk	RPV City Talk
6:30 PM - 7:00PM	RPV City Talk	RPV City Talk	RPV City Talk	RPV City Talk	RPV City Talk	RPV City Talk	RPV City Talk
7:00 PM - 7:30PM	Red Car History Bob Henry	Red Car History Bob Henry	The City of Rancho Palos Verdes LIVE Planning Commission Meeting March 23, 2021	Edmond Doak Aviation Pioneer Part 1	Edmond Doak Aviation Pioneer Part 1	Edmond Doak Aviation Pioneer Part 1	Edmond Doak Aviation Pioneer Part 1
7:30 PM - 8:00PM							
8:00 PM - 8:30PM	Around the Peninsula	Around the Peninsula		Around the Peninsula	Around the Peninsula	Around the Peninsula	Around the Peninsula
8:30 PM - 9:00PM	Playing the Field- Local	Playing the Field- Local		Playing the Field- Local	Playing the Field- Local	Playing the Field- Local Edition	Playing the Field- Local
9:00 PM - 9:30PM	RPV City Talk	RPV City Talk		RPV City Talk	RPV City Talk	RPV City Talk	RPV City Talk
9:30 PM - 10:00PM	RPV City Talk	RPV City Talk		RPV City Talk	RPV City Talk	RPV City Talk	RPV City Talk
10:00 PM -10:30PM	Lectures with Lianne	Lectures with Lianne		Lectures with Lianne	Lectures with Lianne	Lectures with Lianne	Lectures with Lianne
10:30 PM -11:00PM							
11:00 PM -11:30PM	Peninsula Seniors Connections	Peninsula Seniors Connections		Peninsula Seniors Connections	Peninsula Seniors Connections	Peninsula Seniors Connections	Peninsula Seniors Connections
11:30 PM -12:00 AM							
12:00 AM - 1:00 AM	Community Announcements	Community Announcements	Community Announcements	Community Announcements	Community Announcements	Community Announcements	Community Announcements
1:00 AM - 6:00 AM	Community Announcements	Community Announcements	Community Announcements	Community Announcements	Community Announcements	Community Announcements	Community Announcements

	Sunday	Monday	Tuesday	Wednesday	Thursday	Friday	Saturday
	March 21, 2021	March 22, 2021	March 23, 2021	March 24, 2021	March 25, 2021	March 26, 2021	March 27, 2021
6:00 AM - 6:30 AM							
6:30 AM - 7:00 AM							
7:00 AM - 7:30 AM	The City of Rancho Palos Verdes City Council Meeting March 16, 2021	The City of Rancho Palos Verdes City Council Meeting March 16, 2021	The City of Rancho Palos Verdes City Council Meeting March 16, 2021	The City of Rancho Palos Verdes City Council Meeting March 16, 2021	The City of Rancho Palos Verdes City Council Meeting March 16, 2021	The City of Rancho Palos Verdes City Council Meeting March 16, 2021	The City of Rancho Palos Verdes City Council Meeting March 16, 2021
7:30 AM - 8:00 AM							
8:00 AM - 8:30 AM							
8:30 AM - 9:00 AM							
9:00 AM - 9:30 AM							
9:30 AM - 10:00 AM							
10:00 AM -10:30AM							
10:30 AM -11:00AM							
11:00 AM -11:30 AM	The City of Rancho Palos Verdes Planning Commission Meeting March 9, 2021	The City of Rancho Palos Verdes Planning Commission Meeting March 9, 2021	The City of Rancho Palos Verdes Planning Commission Meeting March 9, 2021	The City of Rancho Palos Verdes Planning Commission Meeting March 9, 2021	The City of Rancho Palos Verdes Planning Commission Meeting March 23, 2021	The City of Rancho Palos Verdes Planning Commission Meeting March 23, 2021	The City of Rancho Palos Verdes Planning Commission Meeting March 23, 2021
11:30 AM -12:00PM							
12:00 PM -12:30PM							
12:30 PM - 1:00PM							
1:00 PM - 1:30PM							
1:30 PM - 2:00PM							
2:00 PM - 2:30PM	Community Announcements	Community Announcements	Community Announcements	Community Announcements	Community Announcements	Community Announcements	Community Announcements
2:30 PM - 3:00PM							
3:00 PM - 3:30PM	Community Announcements	Community Announcements	Community Announcements	Community Announcements	Community Announcements	Community Announcements	Community Announcements
3:30 PM - 4:00PM							
4:00 PM - 4:30PM	Community Announcements	Community Announcements	Community Announcements	Community Announcements	Community Announcements	Community Announcements	Community Announcements
4:30 PM - 5:00PM							
5:00 PM - 5:30PM	Community Announcements	Community Announcements	Community Announcements	Community Announcements	Community Announcements	Community Announcements	Community Announcements
5:30 PM - 6:00PM							
6:00 PM - 6:30PM	Community Announcements	Community Announcements	Community Announcements	Community Announcements	Community Announcements	Community Announcements	Community Announcements
6:30 PM - 7:00PM							
7:00 PM - 7:30PM	Community Announcements	The Palos Verdes Peninsula Unified School District (PVPUSD) Board of Education Meeting	The City of Rancho Palos Verdes LIVE Planning Commission Meeting March 23, 2021	Community Announcements	Community Announcements	Community Announcements	Community Announcements
7:30 PM - 8:00PM							
8:00 PM - 8:30PM	The City of Rancho Palos Verdes City Council Meeting March 16, 2021	The Palos Verdes Peninsula Unified School District (PVPUSD) Board of Education Meeting		The City of Rolling Hills Estates City Council Meeting	The City of Rancho Palos Verdes City Council Meeting March 16, 2021	The City of Rolling Hills Estates City Council Meeting	The City of Rancho Palos Verdes City Council Meeting March 16, 2021
8:30 PM - 9:00PM							
9:00 PM - 9:30PM							
9:30 PM - 10:00PM							
10:00 PM -10:30PM							
10:30 PM -11:00PM							
11:00 PM -11:30PM							
11:30 PM -12:00 AM							
12:00 AM - 1:00 AM							
1:00 AM - 6:00 AM							



LOS ANGELES COUNTY SHERIFF'S DEPARTMENT- LOMITA STATION REPORTED CRIMES & ARRESTS BETWEEN (02/14/2021 - 02/20/2021)



LOMITA:

CRIME	FILE #	RD	DATE	TIME	LOCATION-PUBLIC	METHOD OF ENTRY	LOSS-PUBLIC	ADDITIONAL INFORMATION-PUBLIC
PETTY THEFT	21-00503	1714	2/14/2021	2348	2000 BLK PCH	BICYCLE THEFT	BICYCLE	SUSPECT MW/25-30/509/160/BLK HAIR WRG A BLUE CUT OFF SHIRT AND GRN CAMOUFLAGE PANTS.
GRAND THEFT	21-00521	1711	2/15/2021	0600-2300	24000 BLK PENNSYLVANIA AVE	N/A	US CURRENCY	SUSPECT(S) UNKNOWN
GRAND THEFT (AUTO)	21-00549	1711	2/17/2021-2/18/2021	1400-0500	24000 BLK MOON AVE	N/A	RED 2002 HONDA XR650L MOTORCYCLE	SUSPECT(S) UNKNOWN
ATTEMPT BURGLARY (BUSINESS)	21-00557	1710	2/17/2021-2/18/2021	1800-1100	24000 BLK NARBONNE AVE	HOLE CUT IN THE EAST WALL	NO LOSS	SUSPECT(S) UNKNOWN
BURGLARY (RESIDENTIAL)	21-00576	1712	2/19/2021	1530-1730	25000 BLK OAK ST	SLIDING GLASS DOOR	FOOD	SUSPECT FB/BLUE EYES/THIN BUILD/BRAIDS WRG A COLORFUL HEAD WRAP AND COLORFUL TOP.
BURGLARY (RESIDENTIAL)	21-00580	1712	2/20/2021	0829	25000 BLK OAK ST	REAR GLASS SLIDING DOOR	NO LOSS	1 SUSPECT ARRESTED
TOTAL ARRESTS: APPROPRIATION OF LOST PROPERTY - 1, BATTERY - 1, BURGLARY - 1, FALSE IMPERSONATION - 1, POSSESSION OF BRASS KNUCKLES - 1, VANDALISM - 1, VEHICLE VIOLATIONS - 3, WARRANTS - 5								

RANCHO PALOS VERDES:

CRIME	FILE #	RD	DATE	TIME	LOCATION-PUBLIC	METHOD OF ENTRY	LOSS-PUBLIC	ADDITIONAL INFORMATION-PUBLIC
PETTY THEFT	21-00497	1740	2/14/2021	0230-03100	32000 BLK SEAGATE DR	MAIL THEFT	MAIL	1 SUSPECT ARRESTED
BURGLARY (VEHICLE)	21-00513	1742	2/15/2021	1300-2015	TRUMP NATIONAL DR	N/A	PURSE, WALLET, EYEGLASSES, CDL, KEY FOB	SUSPECT(S) UNKNOWN
BURGLARY (VEHICLE)	21-00536	1736	2/16/2021-2/17/2021	1800-1015	2400 BLK 250TH ST	FRONT DRIVER SIDE KEYHOLE DAMAGED	NO LOSS	SUSPECT(S) UNKNOWN
GRAND THEFT (CATALYTIC CONVERTER)	21-00566	1740	2/19/2021	0430	CLIPPER RD	CATALYTIC CONVERTER	CATALYTIC CONVERTER	SUSPECT(S) UNKNOWN. SUSP(S) WERE SEEN LEAVING IN A WHITE SEDAN.

GRAND THEFT	21-00567	1740	2/10/2021- 2/18/2021	2100- 2100	32000 BLK SEAGATE DR	N/A	US CURRENCY	SUSPECT(S) UNKNOWN
TOTAL ARRESTS: DRUGS - 1, GRAND THEFT - 1, VEHICLE VIOLATIONS - 3, WARRANTS - 1								

ROLLING HILLS:

CRIME	FILE #	RD	DATE	TIME	LOCATION-PUBLIC	METHOD OF ENTRY	LOSS-PUBLIC	ADDITIONAL INFORMATION-PUBLIC
NO CRIMES DURING THIS TIME								
NO ARRESTS DURING THIS TIME								

ROLLING HILLS ESTATES:

CRIME	FILE #	RD	DATE	TIME	LOCATION-PUBLIC	METHOD OF ENTRY	LOSS-PUBLIC	ADDITIONAL INFORMATION-PUBLIC
BURGLARY (RESIDENTIAL)	21-00498	1723	2/14/2021	0658	ASPEN WAY	OPEN GARAGE DOOR	NO LOSS	SUSPECT MW/20'S/600/150/BLK HAIR WRG A DARK GRY HOODIE AND BLK PANTS.
SHOPLIFTING	21-00508	1724	2/15/2021	1000	PENINSULA CTR	OPEN FOR BUSINESS	CLOTHING, TOILETRIES	1 SUSPECT ARRESTED
BURGLARY (RESIDENTIAL)	21-00586	1723	2/20/2021	1045- 2015	SAN MIGUEL	REAR GLASS DOOR SMASHED	PURSES, JEWELRY	SUSPECT(S) UNKNOWN
BURGLARY (RESIDENTIAL)	21-00591	1723	2/19/2021- 2/22/2021	1600- 0915	SANTA CRUZ	REAR DOOR WINDOW SHATTERED	UNK AT TIME OF REPORT	SUSPECT(S) UNKNOWN
TOTAL ARRESTS: SHOPLIFTING - 1, VIOLATION OF A RESTRAINING ORDER - 1								

SAN PEDRO:

CRIME	FILE #	RD	DATE	TIME	LOCATION-PUBLIC	METHOD OF ENTRY	LOSS-PUBLIC	ADDITIONAL INFORMATION-PUBLIC
NO CRIMES DURING THIS TIME								
NO ARRESTS DURING THIS TIME								

PVP:

CRIME	FILE #	RD	DATE	TIME	LOCATION-PUBLIC	METHOD OF ENTRY	LOSS-PUBLIC	ADDITIONAL INFORMATION-PUBLIC
GRAND THEFT (AUTO)/PETTY THEFT	21-00501	1754	2/14/2021	1500- 1715	27000 BLK SUNNYRIDGE RD	N/A	BLK 2000 BMW 528I	1 SUSPECT ARRESTED
BURGLARY (VEHICLE)	21-00507	1753	2/14/2021- 2/15/2021	2100- 0800	3600 BLK ESTATES LN	WINDOWS SHATTERED	NO LOSS	SUSPECT MALE WRG ALL BLK W/ A FACE COVER.

BURGLARY (VEHICLE)	21-00530	1753	2/16/2021- 2/17/2021	1900- 0427	3600 BLK W ESTATES LN	DRIVER'S SIDE WINDOW SMASHED	TOOL, KEY	SUSPECT(S) UNKNOWN
BURGLARY (BUSINESS)/ PETTY THEFT	21-00532	1753	1/24/2021	1849	3600 BLK W HIDDEN LN	MAIL THEFT	MAIL	SUSPECT KNOWN.
BURGLARY (MAILBOXES)	21-00552	1753	2/17/2021	2110- 2130	3600 BLK HIDDEN LN	MAIL THEFT	MAIL	SUSPECT KNOWN
TOTAL ARRESTS: VEHICLE VIOLATIONS - 1								

**Data included in this report is time sensitive and subject to change.



LOS ANGELES COUNTY SHERIFF'S DEPARTMENT- LOMITA STATION REPORTED CRIMES & ARRESTS BETWEEN (02/21/2021 - 02/27/2021)



LOMITA:

CRIME	FILE #	RD	DATE	TIME	LOCATION-PUBLIC	METHOD OF ENTRY	LOSS-PUBLIC	ADDITIONAL INFORMATION-PUBLIC
GRAND THEFT (AUTO)	21-00607	1712	2/23/2021	1200-1300	25000 BLK WALNUT ST	N/A	GRN 2002 CHEVY TAHOE CA/7GAF960	SUSPECT(S) UNKNOWN
BURGLARY (RESIDENTIAL)/ ARSON	21-00624	1713	2/24/2021	1700	2000 BLK 264TH ST	OPEN FRONT DOOR	NO LOSS	1 SUSPECT ARRESTED
PETTY THEFT (UNLOCKED VEHICLE)	21-00626	1712	2/24/2021	2135	25000 BLK OAK ST	UNLOCKED VEHICLE	US CURRENCY	SUSPECT(S) UNKNOWN
BURGLARY (VEHICLE)	21-00637	1713	2/25/2021	1155-1230	25000 BLK CAYUGA AVE	FRONT PASSENGER SIDE WINDOW SHATTERED	CELLPHONE CAR CHARGER, LUNCH BOX	SUSPECT(S) UNKNOWN
PETTY THEFT	21-00657	1711	2/26/2021	1700	2100 BLK 247TH ST	PACKAGE THEFT	PACKAGES	SUSPECT MH/25/508/180 WRG BLUE JEANS AND A DARK COLORED SHIRT. SUSP WAS SEEN LEAVING LOC IN A BLK CHEVY TAHOE.
TOTAL ARRESTS: APPROPRIATION OF LOST PROPERTY - 1, ATTEMPT ARSON - 1, BATTERY - 1, ELDER THEFT - 1, WARRANTS - 5								

RANCHO PALOS VERDES:

CRIME	FILE #	RD	DATE	TIME	LOCATION-PUBLIC	METHOD OF ENTRY	LOSS-PUBLIC	ADDITIONAL INFORMATION-PUBLIC
ASSAULT	21-00588	1738	2/21/2021	1000	31000 BLK PALOS VERDES DR WEST	N/A	NO LOSS	S1 MB/40'S/508/180/BLK HAIR WRG A BLK SHIRT AND WHITE PANTS.
PETTY THEFT (UNLOCKED VEHICLE)	21-00592	1746	2/20/2021-2/21/2021	1700-1500	29000 BLK WESTERN AVE	UNLOCKED VEHICLE	SUNGLASSES, MASKS, POUCH, US CURRENCY, GARAGE DOOR OPENER	SUSPECT(S) UNKNOWN
BURGLARY (RESIDENTIAL)	21-00601	1736	2/23/2021	0215	6700 BLK LOS VERDES DR	DEAD BOLT LOCK DAMAGED	NO LOSS	1 SUSPECT ARRESTED
BURGLARY (RESIDENTIAL)	21-00650	1744	2/25/2021	1820	2900 BLK VISTA DEL MAR	GLASS BACK DOOR SHATTERED	FIREARM	SUSPECT(S) UNKNOWN
PETTY THEFT (UNLOCKED VEHICLE)	21-00656	1746	2/25/2021	1700	29000 BLK S WESTERN AVE	UNLOCKED VEHICLE	CDL, PASSPORT, US CURRENCY	SUSPECT(S) UNKNOWN
BURGLARY (RESIDENTIAL)	21-00664	1743	1/30/2021-2/27/2021	0000-0000	31000 BLK EAGLEHEAVEN CIR	N/A	EXTENSION CORD, TOOL	SUSPECT(S) UNKNOWN

TOTAL ARRESTS: VANDALISM - 1, VEHICLE VIOLATIONS - 1, WARRANTS - 1								
--	--	--	--	--	--	--	--	--

ROLLING HILLS:

CRIME	FILE #	RD	DATE	TIME	LOCATION-PUBLIC	METHOD OF ENTRY	LOSS-PUBLIC	ADDITIONAL INFORMATION-PUBLIC
NO CRIMES DURING THIS TIME								
NO ARRESTS DURING THIS TIME								

ROLLING HILLS ESTATES:

CRIME	FILE #	RD	DATE	TIME	LOCATION-PUBLIC	METHOD OF ENTRY	LOSS-PUBLIC	ADDITIONAL INFORMATION-PUBLIC
BURGLARY (RESIDENTIAL)	21-00591	1723	2/19/2021- 2/22/2021	1600- 0915	SANTA CRUZ	REAR DOOR WINDOW SHATTERED	UNK AT TIME OF REPORT	SUSPECT(S) UNKNOWN
SHOPLIFTING	21-00598	1724	2/22/2021	1728	900 SILVER SPUR RD	OPEN FOR BUSINESS	ORAL HYGIENE ITEMS, FIRST AID/PAIN RELIEF ITEMS	S1 MH/A POSSIBLE ARABIC ORIGIN/30'S/508- 510/170-190/BLK HAIR/BRN EYES. SUSP WAS SEEN LEAVING LOC IN A GRY POSSIBLE 4 DR INFINITI
BURGLARY (RESIDENTIAL)	21-00651	1721	2/25/2021	1845	AURORA DR	REAR GLASS DOOR SLIDER SMASHED	NO LOSS	SUSPECT(S) UNKNOWN
TOTAL ARRESTS: VIOLATION OF A RESTRAINING ORDER - 1								

SAN PEDRO:

CRIME	FILE #	RD	DATE	TIME	LOCATION-PUBLIC	METHOD OF ENTRY	LOSS-PUBLIC	ADDITIONAL INFORMATION-PUBLIC
BURGLARY (BUSINESS)	21-00604	1750	2/22/2021- 2/23/2021	1800- 0745	900 BLK 1ST ST	GARAGE PANEL FORCED OPEN	FLASHLIGHT, SMOG SCANNERS	SUSPECT(S) UNKNOWN
ATTEMPT GRAND THEFT (AUTO)	21-00653	1750	2/25/2021- 2/26/2021	1845- 0800	900 BLK 1ST ST	N/A	NO LOSS	SUSPECT(S) UNKNOWN
TOTAL ARRESTS: VEHICLE VIOLATIONS - 1, WARRANTS - 1								

PVP:

CRIME	FILE #	RD	DATE	TIME	LOCATION-PUBLIC	METHOD OF ENTRY	LOSS-PUBLIC	ADDITIONAL INFORMATION-PUBLIC
GRAND THEFT	21-00634	1754	2/19/2021- 2/24/2021	1000- 0900	26000 BLK CRENSHAW BLVD	N/A	HARDRIVE	SUSPECT(S) UNKNOWN
NO ARRESTS DURING THIS TIME								

**Data included in this report is time sensitive and subject to change.



LOS ANGELES COUNTY SHERIFF'S DEPARTMENT- LOMITA STATION REPORTED CRIMES & ARRESTS BETWEEN (02/28/2021 - 03/06/2021)



LOMITA:

CRIME	FILE #	RD	DATE	TIME	LOCATION-PUBLIC	METHOD OF ENTRY	LOSS-PUBLIC	ADDITIONAL INFORMATION-PUBLIC
BURGLARY (RESIDENTIAL)	21-00731	1711	1/20/2021- 3/2/2021	1200- 1500	2100 BLK 248TH ST	REAR DOOR LOCK DAMAGED	FIREARMS, DVD PLAYER, JEWELRY, CELLPHONE	SUSPECT(S) UNKNOWN
ATTEMPT CARJACKING/ ASSAULT	21-00682	1712	3/1/2021	2330	1900 BLK LOMITA BLVD	N/A	NO LOSS	1 SUSPECT ARRESTED
PETTY THEFT	21-00729	1712	10/1/2020- 3/5/2021	0000- 0930	1900 BLK ESHELMAN WAY	BATTERY	CAR BATTERY	SUSPECT(S) UNKNOWN
ROBBERY	21-00690	1713	3/2/2021	1620	25000 BLK OAK ST	N/A	BICYCLE	SUSPECT MW/30/600/150 WRG BLK SUNGLASSES AND A BLK HOODED SWEATER. SUSP WAS SEEN LEAVING LOC IN A BURGUNDY VAN.
GRAND THEFT (AUTO)	21-00724	1714	3/4/2021	2130	2000 BLK PCH	N/A	RED 2012 TOYOTA SCION XD	2 SUSPECTS ARRESTED
TOTAL ARRESTS: CARJACKING - 1, DOMESTIC VIOLENCE - 1, DRUGS - 1, VEHICLE VIOLATIONS - 3, WARRANTS - 10								

RANCHO PALOS VERDES:

CRIME	FILE #	RD	DATE	TIME	LOCATION-PUBLIC	METHOD OF ENTRY	LOSS-PUBLIC	ADDITIONAL INFORMATION-PUBLIC
BURGLARY (RESIDENTIAL)	21-00670	1740	2/28/2021	0418	SEACOVE DR	SPARE GARAGE DOOR KEY	BICYCLES	SUSPECT MALE/MEDIUM BUILD WRG A DARK COLORED BEANIE, DARK COLORED SWEATER, AND LIGHT COLORED PANTS.
BURGLARY (RESIDENTIAL)	21-00692	1746	3/2/2021	1825	ROCKINGHORSE RD	NORTHEAST GLASS WINDOW SHATTERED	NO LOSS	SUSPECT(S) UNKNOWN
GRAND THEFT (CATALYTIC CONVERTER)	21-00746	1747	3/6/2021	0700- 1730	27000 BLK MONTEREINA DR	CATALYTIC CONVERTER	CATALYTIC CONVERTER	SUSPECT(S) UNKNOWN
TOTAL ARRESTS: CARRYING A LOADED FIREARM NOT THE REGISTERED OWNER - 1, DRUGS - 1, VEHICLE VIOLATIONS - 1								

ROLLING HILLS:

CRIME	FILE #	RD	DATE	TIME	LOCATION-PUBLIC	METHOD OF ENTRY	LOSS-PUBLIC	ADDITIONAL INFORMATION-PUBLIC
NO CRIMES DURING THIS TIME								
NO ARRESTS DURING THIS TIME								

ROLLING HILLS ESTATES:

CRIME	FILE #	RD	DATE	TIME	LOCATION-PUBLIC	METHOD OF ENTRY	LOSS-PUBLIC	ADDITIONAL INFORMATION-PUBLIC
BURGLARY (VEHICLE)	21-00698	1720	3/2/2021- 3/3/2021	1330- 0430	25000 BLK HAWTHORNE BLVD	FRONT DRIVER SIDE WINDOW SHATTERED	UNK AT TIME OF REPORT	SUSPECT(S) UNKNOWN
NO ARRESTS DURING THIS TIME								

SAN PEDRO:

CRIME	FILE #	RD	DATE	TIME	LOCATION-PUBLIC	METHOD OF ENTRY	LOSS-PUBLIC	ADDITIONAL INFORMATION-PUBLIC
BURGLARY (RESIDENTIAL)	21-00695	1750	3/2/2021	0830- 1630	1000 BLK 7TH ST	WINDOWS SMASHED	DRUG PARAPHERNALIA, KNIFE	SUSPECT(S) UNKNOWN
TOTAL ARRESTS: GRAND THEFT AUTO - 1, VEHICLE VIOLATIONS - 1								

PVP:

CRIME	FILE #	RD	DATE	TIME	LOCATION-PUBLIC	METHOD OF ENTRY	LOSS-PUBLIC	ADDITIONAL INFORMATION-PUBLIC
GRAND THEFT (CATALYTIC CONVERTER)	21-00739	1753	3/6/2021	1345	3600 BLK FOX RIDGE LN	CATALYTIC CONVERTER	CATALYTIC CONVERTER	S1 MH/32-35/510/180 WRG BLUE JEANS AND A GRY SHIRT. S2 MH/28-30/150-160.
NO ARRESTS DURING THIS TIME								

****Data included in this report is time sensitive and subject to change.**

PUBLIC RECORDS ACT REQUESTS - TRACKING LOG 2021

DATE OF REQUEST	DATE RECEIVED	REQUESTOR	SUBJECT	ACTION TAKEN
2/25/2021	2/25/2021	Paula Lavigne (ESPN)	Copy of records of written correspondence of complaints, traffic and/or traffic volume studies, and repair and improvement plans, for the stretch of Hawthorne Boulevard from Silver Spur Road to Palos Verdes Drive from Jan. 1, 2016, to present.	2/25/21 AA Zweizig forwarded request to staff. 3/8/21 AA Zweizig 14-day extension letter sent.
2/25/2021	2/25/2021	Josh Peter (USA Today)	Request for all records and documents related to any city investigations into traffic accidents on Hawthorne Blvd. between Silver Spur Road and PV Drive North	2/25/21 AA Zweizig forwarded request to staff. 3/8/21 AA Zweizig 14-day extension letter sent.
2/26/2021	2/26/2021	Barry Segal	Request for Building permits, subdivision maps and conditions of approval, soils reports, E.I.R.s, Planning approvals, any documents related to development of the property at 0 Clipper Road (a.p.m. # 7573-006-024)	2/26/21 AA Zweizig forwarded request to staff. 3/8/21 AA Zweizig 14-day extension letter sent.
3/2/2021	3/2/2021	Bruce Boyer	Any and all records as to any ordinances which: 1) Prohibit or regulate signs on vehicles. Whether the vehicles are parked or moving. Motorized or not.; 2) Prohibit or regulate the parking of 'trailers'. Whether CVC395, CVC 530 or CVC 630 or defined as any type of trailer in your ordinance.; 3)Prohibit or regulate the parking of 'Oversize vehicles' "RVs" "campers" and such; 4) As to '72 hr parking".	3/2/21 AA Zweizig forwarded request to staff. 3/12/21 AA Zweizig 14-day extension letter sent.
1/22/2021	3/4/2021	Adishian Law Group PC	PRA for records relating to 29254 PVDE	City Attorney Aleshire received letter from atty -CDD has received request and is confirming whether documents were provided in multiple previous requests. 3/16/21 AA Zweizig sent determination letter and first production of documents.
3/16/2021	3/16/2021	Melissa Lopez	Requesting all emails within the city that are related to Tiger Woods cresh that happened on Feb 23.	3/16/21 AA Momoli forwarded request to staff.

Assembly Joint Resolution

No. 2

Introduced by Assembly Member O'Donnell

December 7, 2020

Assembly Joint Resolution No. 2—Relative to coastal and marine waters.

LEGISLATIVE COUNSEL'S DIGEST

AJR 2, as introduced, O'Donnell. Coastal and marine waters: Santa Catalina Island: dichloro-diphenyl-trichloroethane.

This measure would request that the Congress of the United States and the United States Environmental Protection Agency take all measures necessary to prevent further damage to California's citizens, wildlife, and natural resources by the dichloro-diphenyl-trichloroethane waste dumped in the waters near Santa Catalina Island.

Fiscal committee: no.

- 1 WHEREAS, California's coastal and marine waters are among
- 2 the state's most precious resources and their conservation is
- 3 essential to the preservation of both marine wildlife and
- 4 California's thriving ocean economy, including fishing, tourism,
- 5 commerce, and recreation sectors; and
- 6 WHEREAS, Santa Catalina Island and its surrounding waters
- 7 provide habitats for a variety of marine creatures, including mantis
- 8 shrimp, horn and leopard sharks, moray eels, and several species
- 9 of sea birds; and
- 10 WHEREAS, Santa Catalina Island also serves as a key part of
- 11 Southern California's ocean tourism economy, generating over

1 one hundred sixty million dollars (\$160,000,000) in economic
2 activity in 2016 and receiving over 1,000,000 visitors in 2019; and

3 WHEREAS, Despite critical protections provided by the federal
4 Marine Protection, Research, and Sanctuaries Act of 1972 (Public
5 Law 92-532), the dumping of hazardous material in ocean waters
6 before the implementation of that act continues to threaten the
7 health of California's citizens and wildlife to this day; and

8 WHEREAS, The rediscovered dichloro-diphenyl-trichloroethane
9 (DDT) waste dumping site off the north coast of Santa Catalina
10 Island represents a significant threat to the health of marine life in
11 those waters and all animals in the food chain dependent on that
12 marine life; and

13 WHEREAS, The threat posed by these contaminants to the
14 ecosystems on and around Santa Catalina Island also constitutes
15 a threat to the ocean economy of the island and California, which
16 depends on the continued health of marine life and safety of those
17 experiencing California's waters; and

18 WHEREAS, It is incumbent upon both the state and federal
19 government to ensure these precious natural resources are preserved
20 for future generations and protected from further damage by past
21 ecological mistakes; now, therefore, be it

22 *Resolved by the Assembly and the Senate of the State of*
23 *California, jointly*, That the Legislature requests that the Congress
24 of the United States and the United States Environmental Protection
25 Agency take all measures necessary to prevent further damage to
26 California's citizens, wildlife, and natural resources by the DDT
27 waste dumped in the waters near Santa Catalina Island; and be it
28 further

29 *Resolved*, That the Chief Clerk of the Assembly transmit copies
30 of this resolution to the President and Vice President of the United
31 States, to the Speaker of the United States House of
32 Representatives, to the Majority Leader of the United States Senate,
33 to each Senator and Representative from California in the Congress
34 of the United States, and to the author for appropriate distribution.

O



March 16, 2021

The Honorable Scott Wiener
California State Senate
State Capitol, Room 5100
Sacramento, CA 95814

SUBJECT: Notice of Opposition to SB 10

Dear Senator Wiener:

The Cities of Palos Verdes Estates, Rancho Palos Verdes and Rolling Hills (Peninsula Cities) strongly object to SB 10 which attempts to undermine local authority and control. This bill will have a significant impact on how we effectively regulate and develop as we deem appropriate for our cities.

Increasing housing density to accommodate up to 10 units per parcel if the parcel is located in a “jobs-rich”, a “transit-rich” or an “urban infill site” could have a tremendous adverse impact on parcels located in adjacent cities. However, the affected property owners are stripped of their rights to voice their concerns about the project because SB 10 skips the CEQA process where stakeholders are typically given the opportunity to provide their input on a proposed development.

Additionally, increasing density by up to 10 units per parcel in a Very High Fire Severity zone, such as the Peninsula, poses a great threat to public health, safety and welfare. The Peninsula has limited access in and out of the area. Increasing the population could be life threatening to many of our residents and their animals in case of an emergency.

While we appreciate efforts to ensure that all Californians have access to affordable housing, this bill strips away the rights of our local residents and it fails to take into account our local conditions that could potentially put our residents in grave danger. The Peninsula Cities are committed to being part of the solution to the housing shortfall across all income levels and remain open to housing-related legislation that supports local flexibility, decision-making, and community input. For these reasons the Peninsula Cities oppose SB 10 unless it is amended to address our concerns.

SB 10 Increasing Housing Density (Wiener)
March 16, 2021
Page 2

Sincerely,



Eric Alegria
Mayor, City of Rancho Palos Verdes



Michael Kemps
Mayor, City of Palos Verdes Estates



Jeff Pieper
Mayor, City of Rolling Hills

cc: Ben Allen, Senator, 26th State Senate District
Al Muratsuchi, Assembly Member, 66th Assembly District
Jeff Kiernan, League of California Cities
Meg Desmond, League of California Cities
Marcel Rodarte, California Contract Cities Association
Palos Verdes Estates City Council
Rancho Palos Verdes City Council
City of Rolling Hills City Council

City of Rancho Palos Verdes 2021 Legislation Positions

Bill Text	Summary	RPV Position	RPV Correspondence	SBCCOG Position	Cal Cities Position	Bill Status
<u>SB 9 (Atkins)</u> Housing Development Approvals	SB 9 would limit local land use authority by requiring ministerial approval of multi-residential unit housing developments.	The City Council opposed this bill at the Council Meeting on February 2, 2021. The Peninsula Cities sent a letter opposing this bill on February 26, 2021.	<u>Letter of Opposition and Staff Report (PDF)</u>	Oppose	Oppose Unless Amend	Amended and re-referred to Senate Housing Committee 02/24/21
<u>SB 10 (Wiener)</u> Planning and Zoning: Housing Development: Density	SB 10 would limit local land use authority related to high-density zoning in transit-rich, jobs-rich areas.	The City Council opposed this bill at the Council Meeting on February 2, 2021.	<u>Letter of Opposition and Staff Report (PDF)</u>	Monitor	Watch	Referred to Senate Committees on Governance & Finance and Housing 01/28/21
<u>AB 14 (Aguiar-Curry)</u> Communications: Broadband Services: California Advanced Services Fund	AB 14 would deploy broadband infrastructure to close the digital divide, with a goal to provide broadband access to no less than 98 percent of California households in each California Advanced Services Fund (CASF) consortia region.	Watch	<u>Fact Sheet (PDF)</u>	Support	Support	Referred to Assembly Committees on Communications and Conveyance & Local Government 01/11/21
<u>AB 34 (Muratsuchi)</u> Communications: Broadband for All Act of 2022	AB 34 would issue a state ballot measure for the issuance of bonds to fund increased access to broadband in unserved and underserved communities.	Watch	<u>Fact Sheet (PDF)</u>	Support	Support in Concept	Re-referred to Assembly Committee on Communications & Conveyance 03/16/21
<u>AB 339 (Lee)</u> State and Local Government: Local Meeting	AB 339 would require cities to have call-in and internet public participation at all City Council meetings.	Watch	<u>Fact Sheet (PDF)</u>		Watch	Introduced 01/27/21
<u>AB 617 (Davies)</u> Planning and Zoning: Regional Housing Needs: Exchange of Allocation	AB 617 would authorize local jurisdictions to transfer all or a portion of its allocation of regional housing need (RHNA) to another jurisdiction.	Watch	<u>Fact Sheet (PDF)</u>		Watch	Referred to Assembly Committees on Housing & Community Development and Local Government 02/25/21
<u>AB 1258 (Nguyen)</u> Housing Element: Regional Housing Need Plan: Judicial Review	AB 1258 would subject final regional housing need (RHNA) plans to judicial review.	Watch	<u>Fact Sheet (PDF)</u>		Watch	Referred to Assembly Committees on Housing & Community Development and Judiciary 03/04/21

City of Rancho Palos Verdes 2021 Legislation Positions

Bill Text	Summary	RPV Position	RPV Correspondence	SBCCOG Position	Cal Cities Position	Bill Status
<u>AB 1295 (Muratsuchi)</u> Residential Development Agreements: Very High Fire Risk Areas	AB 1295 would prohibit cities or counties from entering into a residential development agreement in a VHFHSZ.	Watch	<u>Fact Sheet (PDF)</u>		Watch	Referred to Assembly Committees on Local Government and Housing & Community Development 03/04/21
ACA (TBA) (Muratsuchi)	Assemblymember Muratsuchi is preparing to introduce a bill to amend the State Constitution to require all local land-use controls and zoning regulations remain within incorporated communities.	Watch	<u>Fact Sheet (PDF)</u>			Pending Introduction
<u>AJR 2 (O'Donnell)</u> Coastal and Marine Waters: Santa Catalina Island: DDT	AJR 2 would request that the US Congress and the EPA take all measures necessary to prevent further damage to California's citizens, wildlife, and natural resources by the DDT waste dumped in the waters near Santa Catalina Island.	Watch	<u>Fact Sheet (PDF)</u>		Watch	Introduced 12/07/20
<u>SB 4 (Gonzalez)</u> Communications: California Advanced Services Fund	SB 4 would require the Governor's Office of Business and Economic Development to work with other agencies to explore ways to facilitate streamlining of local land use approvals for projects related to broadband infrastructure deployment and connectivity.	Watch	<u>Fact Sheet (PDF)</u>	Support	Support	Referred to Senate Committees on Energy, Utilities & Communication and Judiciary 01/28/21
<u>SB 12 (McGuire)</u> Local Government: Planning and Zoning: Wildfires	SB 12 would require jurisdictions to identify the locations of all VHFHSZs in the land use element of their general plan and include a comprehensive retrofit strategy to reduce the risk of property loss and damage during wildfires.	Watch	<u>Fact Sheet (PDF)</u>		Watch	Referred to Senate Committees on Governance & Finance and Housing 01/28/21
<u>SB 15 (Portantino)</u> Housing Development: Incentives: Rezoning of Idle Retail Sites	SB 15 would provide incentive grants to local governments that rezone idle big-box retail or shopping center sites to allow the development of housing instead.	Watch	<u>Fact Sheet (PDF)</u>	Support	Watch	Re-referred to Senate Committee on Housing 03/08/21

City of Rancho Palos Verdes 2021 Legislation Positions

Bill Text	Summary	RPV Position	RPV Correspondence	SBCCOG Position	Cal Cities Position	Bill Status
<u>SB 55 (Stern)</u> VHFHSZ: Development Prohibition	SB 55 would prohibit the creation or approval of a new commercial or residential development in a very high fire hazard severity zone (VHFHSZ).	Watch	<u>Fact Sheet (PDF)</u>	Monitor	Watch	Re-referred to Senate Committees on Governance & Finance and Housing 03/03/21
<u>SB 83 (Allen)</u> California Infrastructure and Economic Development Bank: Sea Level Rise Revolving Loan Program	SB 83 would create the Sea Level Rise Revolving Loan Program to provide low-interest rates to local jurisdictions for the purchase of coastal properties identified as vulnerable.	Watch	<u>Fact Sheet (PDF)</u>	Support	Watch	Re-referred to Senate Committee on Governance & Finance 03/16/21
<u>SB 278 (Leyva)</u> Public Employee's Retirement System: Disallowed Compensation: Benefits Adjustments	SB 278 would require public agencies to directly pay retirees and/or their beneficiaries disallowed retirement benefits using general fund dollars.	Watch	<u>Fact Sheet (PDF)</u>		Oppose	Re-referred to Senate Committee on Judiciary 03/08/21
<u>SB 477 (Wiener)</u> General Plan: Annual Report	SB 477 would require local planning agencies to provide more robust data to the state related to housing streamlining measures and progress with their share of RHNA.	Watch	<u>Fact Sheet (PDF)</u>		Watch	Referred to Senate Committee on Housing 02/25/21

March 15, 2021

Evelyn Quintanilla
Chief of Airport Planning II
Los Angeles World Airports
Los Angeles International Airport
1 World Way
Los Angeles, CA 90045

SUBJECT: Comments to the Draft Environmental Impact Report for the LAX Airfield & Terminal Modernization Project

Dear Ms. Quintanilla,

Thank you for the opportunity to comment on the Draft Environmental Impact Report (DEIR). The City of Rancho Palos Verdes, herein the City, is a quiet coastal town on the Palos Verdes Peninsula, approximately 11 miles south of the Los Angeles International Airport (LAX), but near eastbound aircraft pathways departing from LAX. In review of the DEIR for the LAX Airfield & Terminal Modernization Project (ATMP), the City wishes to express the primary concern that the ATMP will result in an increase in aircraft noise pollution caused by eastbound passenger jets overflying the airspace above the Palos Verdes Peninsula.

As you may know, this community and the rest of the Palos Verdes Peninsula has a long history of expressing concerns to Los Angeles World Airports (LAWA) and the Federal Aviation Administration (FAA) regarding noise impacts associated with departing passenger aircraft from LAX. The City is an active participant on the LAX Roundtable and has made exhaustive requests to the FAA to curb passenger jet aircrafts being vectored by FAA air traffic controllers (ATC) over the Peninsula. Despite these repeated requests to simply adhere to the approved flight paths, the Peninsula continues to suffer from noisy passenger jet overflights originating from LAX.

General Comments

1. In general, the City is concerned that the ATMP will induce more passenger flights departing from LAX, thus, increasing the likelihood that air traffic controllers will “cut the corner” and improperly and against FAA procedures (OSHNN8), vector additional aircraft at low altitudes over the Palos Verdes Peninsula’s airspace. This has been, and continues to be an issue, additional flight will only exacerbate the issue and increase its likelihood.
2. The City also shares the concerns that have been expressed in separate correspondence by partner cities and the South Bay Cities Council of Governments (SBCCOG). We share the concern that LAWA needs to prioritize efforts to disperse

air traffic to their other regional airports. Without a coordinated plan to disperse infrastructure improvements to other local airports, LAX is guaranteed to see an accelerated growth of air traffic activity. This increase in air traffic activity will inevitably result in noisy air traffic near and over the Peninsula, increased traffic congestion, additional local air pollution concentrations and other negative unintended consequences.

Specific Comments

1. In reference to Section 2.3.1.2, the City questions the DEIR's projected air traffic passenger growth data, since the LAWA's study was done prior to the outset of the COVID-19 pandemic. LAWA should reconsider the projected growth in light of changes to pandemic-induced passenger travel behavior and reconsider the projected growth at other airports and those airports' ability to handle the projected growth.
2. In reference to Section 4.4, the City encourages LAWA to consider expanding the scope of study for greenhouse gas emissions based on projected aircraft departures from LAX under known aircraft dispersal patterns. Specifically, air pollutants should be studied, which are emitted from passenger jets vectored over the Palos Verdes Peninsula. The toxic air contaminants of concern should be studied over exposed populations based on the quantity and altitudes of passenger jet with Peninsula overflights. LAWA should consider a range of mitigation measures available to lessen passenger jet air pollution over Peninsula residents, including effective communication with TRACON air traffic controllers to vector passenger jets over the ocean east of the HOLTZ waypoint.
3. Specific to Section 4.7.1 of the DEIR and only specific to the construction phase of the project, the City is concerned that the proposed improvements to Runway 6L-24R will cause significant aircraft departure delays and disruptions. Disrupted and inefficient aircraft movement on the ground has the potential of causing FAA departure controllers to rush departures, resulting in congested air traffic between LAX and the Peninsula. We have witnessed that congested air traffic increases the likelihood of vectoring aircraft from the published offshore flight path (OSHNN8) towards the Peninsula because of the FAA's requirement to maintain aircraft separation for safety purposes or because of the pressure placed on air traffic controllers to make up time for departure delays. In addition, given the projected length of the proposed runway construction from 2021 to 2025 and due to the length of runway closures occurring in 4.5-month duration periods, the City is especially concerned that these runway closures may result in disturbing aircraft noise impacts to the community for lengthy periods of time.
4. Section 4.7.1.5.1.1 of the DEIR does not adequately address the foreseen airspace congestion impacts attributed to temporary airfield construction described above nor does the DEIR adequately address or provide mitigation measures for aircraft noise impacts to communities, such as the City of Rancho Palos Verdes, outside of LAWA's Noise Exposure Map. Although the City is not adjacent to LAX, where the Noise Exposure Map illustrates elevated noise disturbances, the City considers

itself a noise-sensitive community due to the low ambient noise levels enjoyed by its visitors and residents.

5. In reference to Section 4.8 of the DEIR, the City, along with the SBCCOG, believes that the DEIR does not adequately evaluate impacts to motorists coming from the South Bay. Although CEQA may not require it, LAWA should not use the Vehicle Miles Traveled standard to avoid responsibility for the increased congestion on the critical thoroughfares that will directly result from this large airport expansion. The City encourages LAWA to work with stakeholders such as the SBCCOG, LA Metro, Caltrans, and surrounding cities who have been working together to identify freeway improvements and can do so again to address off site roadway mitigation improvements necessitated by this project. Even though LAWA may have restrictions by the FAA on paying for these off-facility improvements, the impacts to these facilities occur, nonetheless. For example, it may prove beneficial for LAWA to work with other implementing agencies to address the Century Boulevard exit on the northbound I-405 to allow motorists to head west on Century Boulevard without the need for a traffic signal.
6. In reference to Section 4.8.3.2.1 of the DEIR, the City supports LAWA's proposal to eliminate permanent access from Sepulveda Boulevard to Terminal 9. However, we share the same traffic concerns as that of the SBCCOG about opening the new Terminal 9 before the aerial roadway system is complete. We also believe that temporary access from Sepulveda Boulevard is unwise. There will already be access to Terminal 9 via Century Boulevard and the new Jet Way street, which are not dependent on the construction of the aerial roadway and they should alleviate the need for temporary access from Sepulveda Boulevard, particularly given the burden it will cause on the traffic traveling through the tunnel. We urge you to commit to eliminating any access from Sepulveda Boulevard at any time to Terminal 9. Temporary access is costly and unsafe as you have already recognized by eliminating the permanent access from Sepulveda Boulevard. If a third means of access to Terminal 9 is deemed necessary, then we would ask that you delay the opening of Terminal 9 until the aerial roadway system is completed.

The City supports the concept of continued evolution and a more efficient, modernized LAX. However, it is difficult to support the ATMP without first addressing some of the current vexing issues, such as FAA improper routing of low flying aircraft, local air space congestion, and environmental sustainability. We must have confidence that LAWA is effectively communicating aircraft noise concerns to the FAA and the two agencies are working together to solve this ongoing issue. The City expects LAWA to champion the concerns of those communities affected by aircraft noise pollution and use their resources to influence the FAA, particularly the FAA's air traffic controllers, to adopt more enforceable, reliable, meaningful and measurable aircraft noise mitigation measures than those described in DEIR.

We appreciate your attention to the City's concerns as LAWA finalizes the environmental review. We hope the provided comments, as well as those comments from affected communities, will translate into implementing amicable measures that will mitigate project related impacts to those affected communities, including the City of Rancho Palos Verdes.

City of Rancho Palos Verdes Comments to DEIR
March 15, 2021

If you have any questions regarding this letter, please contact me at 310-544-5202 or via email at aram@rpvca.gov.

Sincerely,

A handwritten signature in blue ink, consisting of a large loop followed by a stylized 'M' and a trailing line.

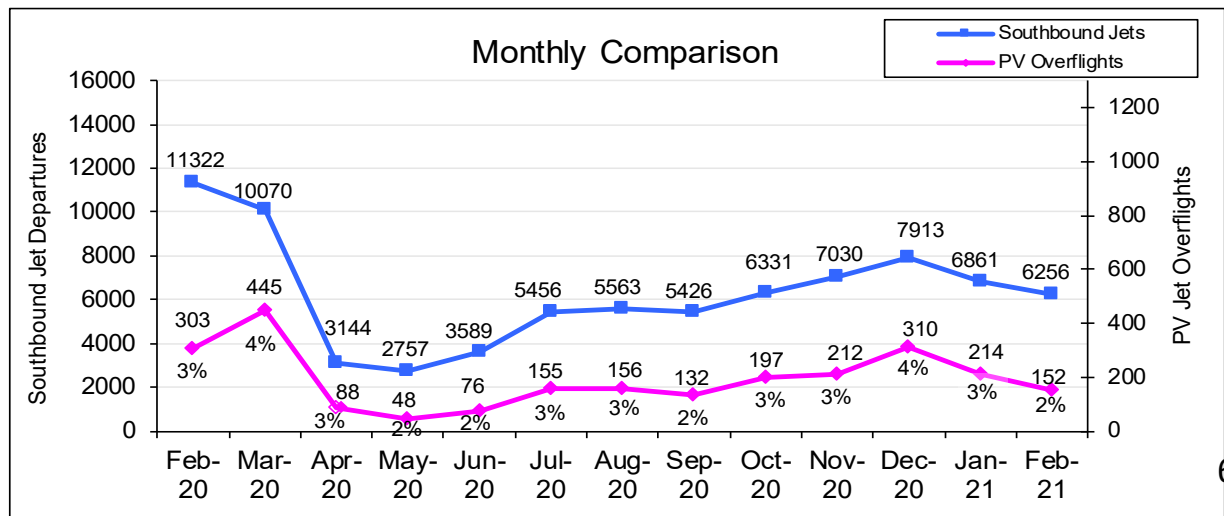
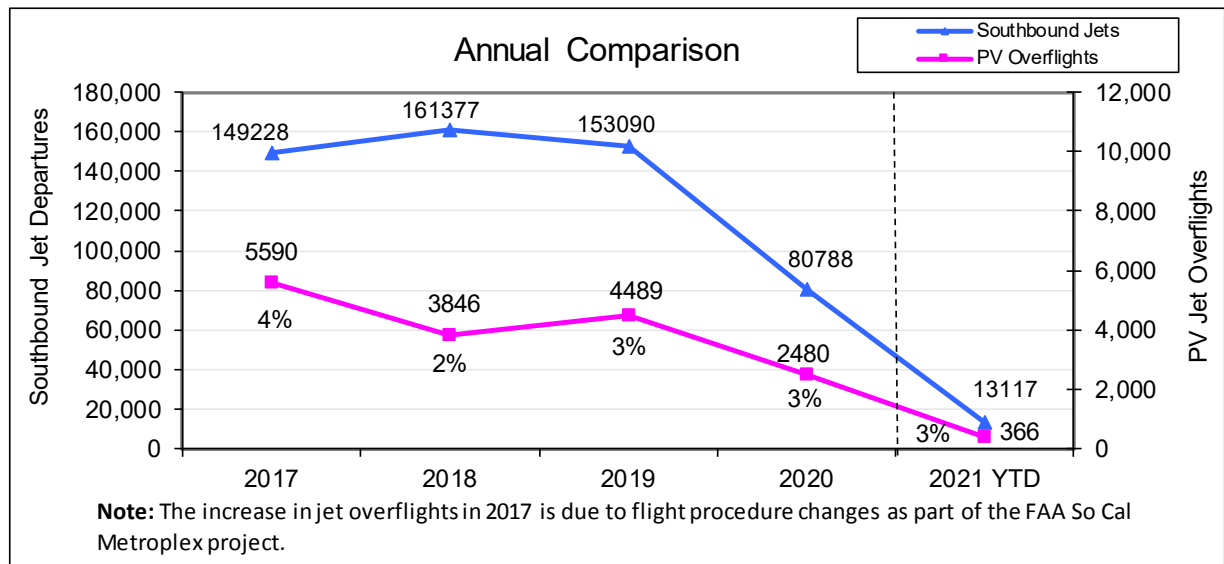
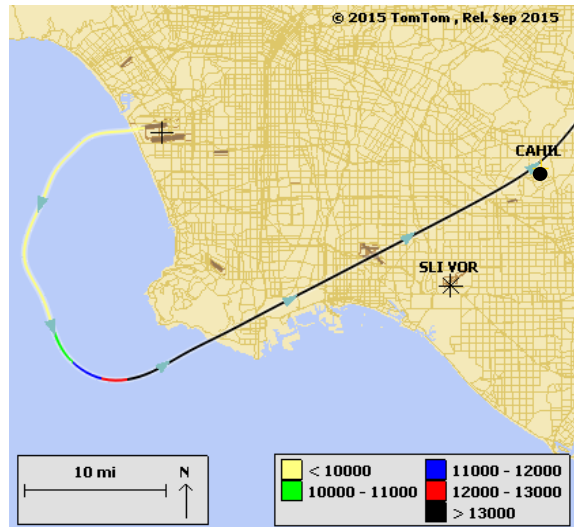
Ara Michael Mihranian, AICP
City Manager

- c. Mayor Alegria and Rancho Palos Verdes City Council
William Wynder, City Attorney
June Ailin, City Prosecutor
Jacki Bachrach, Executive Director of the SBCCOG
Rolling Hills City Council and City Manager Elaine Jeng, P.E.
Rolling Hills Estates City Council and City Manager, Greg Grammar
Palos Verdes Estates City Council and City Manager, Laura Guglielmo
Joe Buscaino, Councilman, 15th District, City of Los Angeles
Jacob Haik, Deputy Chief of Staff, Office of Councilman Buscaino
Lomita City Council and City Manager, Ryan Smoot
Redondo Beach City Council and City Manager, Joe Hoefgen
Hermosa Beach City Council and City Manager, Suja Lowenthal
Manhattan Beach City Council and City Manager, Bruce Moe
El Segundo City Council and City Manager, Scott Mitnick

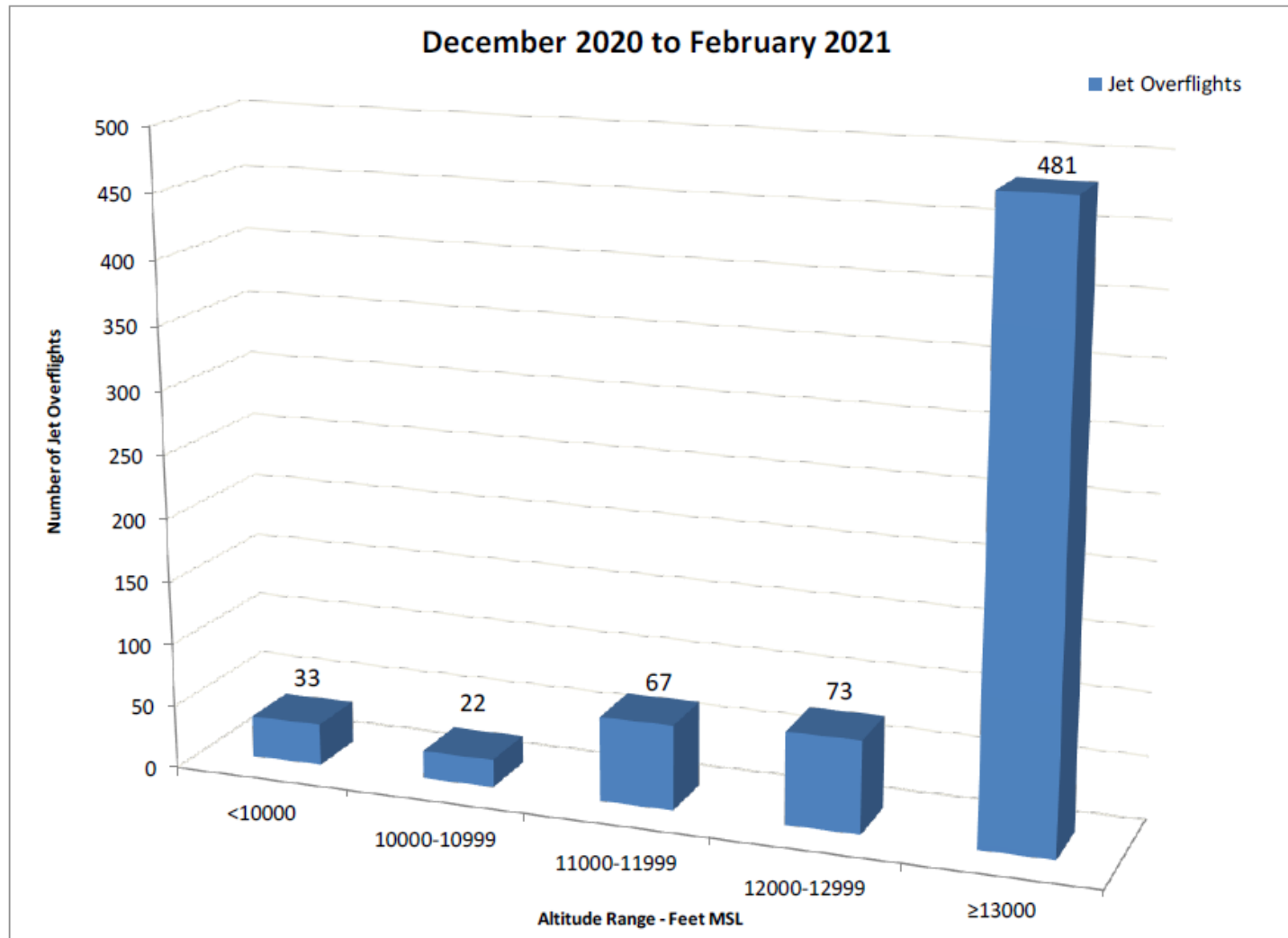
Palos Verdes Peninsula – Jet Overflights

The graphs below show the total number of jets turning south upon departure from LAX and the number of those departures that fly over the Palos Verdes Peninsula.

Sample Jet Departure Flight Track Over PV Peninsula



Jet Altitudes over PV Peninsula





DRAFT AGENDA

**RANCHO PALOS VERDES PLANNING COMMISSION
TUESDAY, MARCH 23, 2021
FRED HESSE COMMUNITY PARK, 29301 HAWTHORNE BOULEVARD
REGULAR MEETING
7:00 P.M.**

**FRED HESSE COMMUNITY PARK (INCLUDING MCTAGGART HALL) WILL BE
CLOSED TO THE PUBLIC**

Pursuant to Section 3 of [Executive Order N-29-20](#), issued by Governor Gavin Newsom on March 17, 2020, the meeting of the Planning Commission for Tuesday, March 23, 2021, will be conducted via teleconference using the Zoom and broadcast live on the City's website at <http://www.rpvca.gov/772/City-Meeting-Video-and-Agendas> and on RPVTV Channels Cox 35 and Fios 39. Please see separate cover for public participation options.

SCHEDULING NOTES

REQUESTS TO SPEAK ON AN ITEM MUST BE SUBMITTED TO THE COMMUNITY DEVELOPMENT DIRECTOR PRIOR TO THE COMPLETION OF THE REMARKS OF THE FIRST SPEAKER ON THE ITEM. NO REQUEST FORMS WILL BE ACCEPTED AFTER THAT TIME.

PURSUANT TO ADOPTED PLANNING COMMISSION PROCEDURE, UNLESS THE PLANNING COMMISSION AGREES TO SUSPEND ITS RULES, NO NEW BUSINESS WILL BE HEARD AFTER 11:00 P.M. AND NO ITEM WILL BE HEARD PAST MIDNIGHT. ANY ITEMS NOT HEARD BECAUSE OF THE TIME LIMITS WILL BE AUTOMATICALLY CONTINUED TO THE NEXT COMMISSION AGENDA.

NEXT P.C. RESOLUTION NO. 2021-05

CALL TO ORDER:

PUBLIC PARTICIPATION OPTIONS:

PLEDGE OF ALLEGIANCE:

ROLL CALL:

APPROVAL OF AGENDA:

COMMUNICATIONS:

City Council Items:

Staff:

Commission:

COMMENTS FROM THE AUDIENCE (regarding non-agenda items):

CONSENT CALENDAR:

1. APPROVAL OF THE MARCH 9, 2021 P.C. MINUTES

CONTINUED PUBLIC HEARINGS:

NONE

CONTINUED BUSINESS:

NONE

NEW PUBLIC HEARINGS:

2. HEIGHT VARIATION, MAJOR GRADING PERMIT, VARIANCE, SITE PLAN REVIEW, AND ENCROACHMENT PERMIT- (CASE NO. PLVA2018-0001): 28160 Palos Verdes Drive East (JY)

Request: Construct a new 5,285 ft² (garage included), three-story, single-family residence, and ancillary site improvements with 1,697 yd³ of associated grading on a vacant lot.

Recommendation: 1) Review the Applicant's project revisions in response to the Planning Commission and Traffic Safety Committee review of the proposed project; and 2) Adopt P.C. Resolution No. 2021-___; approving, with conditions, a Height Variation, Major Grading Permit, Variance, Site Plan Review, and Encroachment Permit to construct a new 5,285 ft² (garage included), three-story, single-family residence and ancillary site improvements with 1,697 yd³ of associated grading on a vacant lot.

Action Deadline: April 19, 2021

CEQA: Categorically Exempt § 15303 (New Construction)

NEW BUSINESS:

NONE

ITEMS TO BE PLACED ON FUTURE AGENDAS:

3. PRE-AGENDA FOR THE MEETING ON APRIL 13, 2021
4. PRE-AGENDA FOR THE MEETING ON APRIL 27, 2021

ADJOURNMENT:

Americans with Disabilities Act: *In compliance with the Americans with Disabilities Act of 1990, if you require a disability-related modification or accommodation to attend or participate in this meeting, including auxiliary aids or services, please call the Community Development Director at 310 544-5228 at least 48 hours prior to the meeting.*

Notes:

1. Staff reports are available for inspection at City Hall, 30940 Hawthorne Boulevard during regular business hours, 7:30 A.M. to 5:30 P.M. Monday – Thursday and 7:30 A.M. to 4:30 P.M. on Friday. The agenda and staff reports can also be viewed at Fred Hesse Community Park, 29301 Hawthorne Boulevard during the Planning Commission meeting.
2. Materials related to an item on this Agenda submitted to the Planning Commission after distribution of the agenda packet are available for public inspection at the front counter of the Planning Division lobby at City Hall, which is located at 30940 Hawthorne Boulevard, Rancho Palos Verdes during normal business hours as stated in the paragraph above.
3. You can also view the agenda and staff reports at the City's website www.rpvca.gov.
4. Written materials, including emails, submitted to the City are public records and may be posted on the City's website. In addition, City meetings may be televised and may be accessed through the City's website. Accordingly, you may wish to omit personal information from your oral presentation or written materials as they may become part of the public record regarding an agenda item.

California



Marine Protected Area (MPA) Community Compliance Forums Statewide Report 2019 - 2020

With support and funding from:



About

The **MPA Collaborative Network's Compliance Initiative** is supported by Ocean Protection Council (OPC) Once-Through Cooling funds, and in partnership with the Department of Fish and Wildlife (CDFW), the California District Attorneys Association, and Resources Legacy Fund. It is a multi-year initiative that aims to improve the compliance and enforcement of California's network of MPAs through community compliance forums, allied agency enforcement trainings, prosecutor training, and MPA violation data collection.

The individual **Community Compliance Forums** held for each coastal county provided space for local stakeholders to voice their MPA, ocean, and coastal compliance concerns and brainstorm ideas to address those concerns. The Collaborative Network hosted two in-person forums (pre-pandemic) and 13 virtual forums. Five hundred community members participated, resulting in over 2,200 compliance concerns and solutions mentioned during 40+ hours of engagement.

This report summarizes the input gathered from stakeholders during all of the Forums held statewide. During the Community Compliance Forums and in formal written input for those who were not able to attend, the MPA Collaborative Network counted and summarized the mentions of compliance concerns and recommended solutions. Mentions were grouped into broader categories that are defined within. This process resulted in some overlap of mentions for certain categories. For example, if a participant mentioned dogs off leash in sensitive areas and flushing birds, that concern was noted for two categories: Illegal Dog Activities and Wildlife Disturbance. This report includes definitions for all the categories of mentions identified across all Compliance Forums held statewide. Individual Forum reports only include details on the categories mentioned and may not include all those listed below.

Refer to the **Glossary** at the end of this report for definitions of commonly used acronyms.

Key Takeaways

- A common theme throughout the Community Compliance Forums was the need for more diverse membership and engagement, greater cultural sensitivity, and to view MPA compliance through a Diversity, Equity, Inclusion (DEI) lens.
- Community members statewide were most concerned about poaching in MPAs/Fish & Game Code (FGC) violations and trash/pollution
- Participants want to install regulatory and attention grabbing, universal yet tailored signage in strategic locations.
- Top mentioned solutions included targeted education and stakeholder engagement with the fishing community, tourists, youth groups (through bilingual school environmental/ocean/fishing clubs and field trips), and tribes.
- Many participants would like to see more uniformed personnel and enforcement officer presence in coastal areas.
- Education by volunteers/docents is needed to educate the public about MPAs, fishing regulations, tidepooling and wildlife viewing etiquette, and leave no trace practices
- Digital resources such as geolocating apps (e.g., FishLegal) were mentioned in nearly every forum as a solution to noncompliance.
- Other frequently mentioned solutions include printed materials (e.g., MPA brochures), boundary markers/buoys, surveillance technology, more trash receptacles (including for fishing line disposal), changes to fishing regulations, and research on the human dimension/violations data for MPAs.

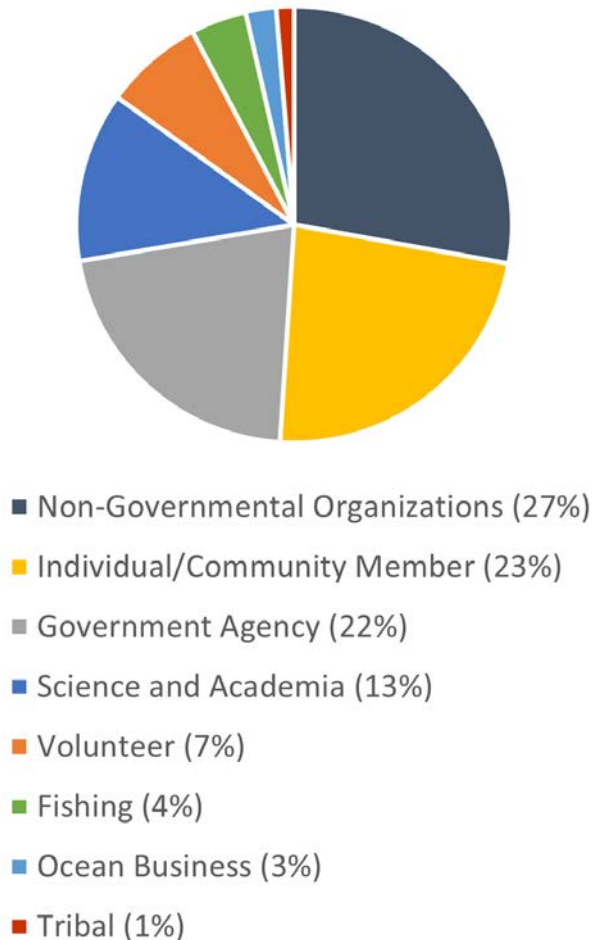
Key Takeaways

Highlighted Compliance Concerns

- There is a high level of illegal fishing and other GC violations in and near California's MPAs.
- Trash/pollution is of high concern in areas of heavy tourism, lagoon/slough MPAs, agricultural and construction sites, encampments, and areas where there is frequent runoff. Lost fishing gear was also a concern as it threatens marine life through entanglements.
- Harmful tidepooling has been exacerbated during the pandemic as there has been an unprecedented increase in visitation to the coast and MPAs. Visitors are often unaware of tidepool etiquette and tidepool take regulations. Some top mentioned areas of concern include Duxbury Reef, Pillar Point, Asilomar, the Rancho Palos Verdes peninsula, and Swami's.
- Wildlife disturbance to seals, whales, and birds by humans, dogs, and drones was of high concern.
- Some areas near MPAs may experience an increase in fishing pressure as people shift consumptive activities to non-MPAs or fish the line.
- Illegal dog activities (dogs off leash, flushing animals, leaving waste) was of high concern in most coastal counties.
- Compliance may be compromised in areas with confusing regulations, boundaries, or jurisdictions.

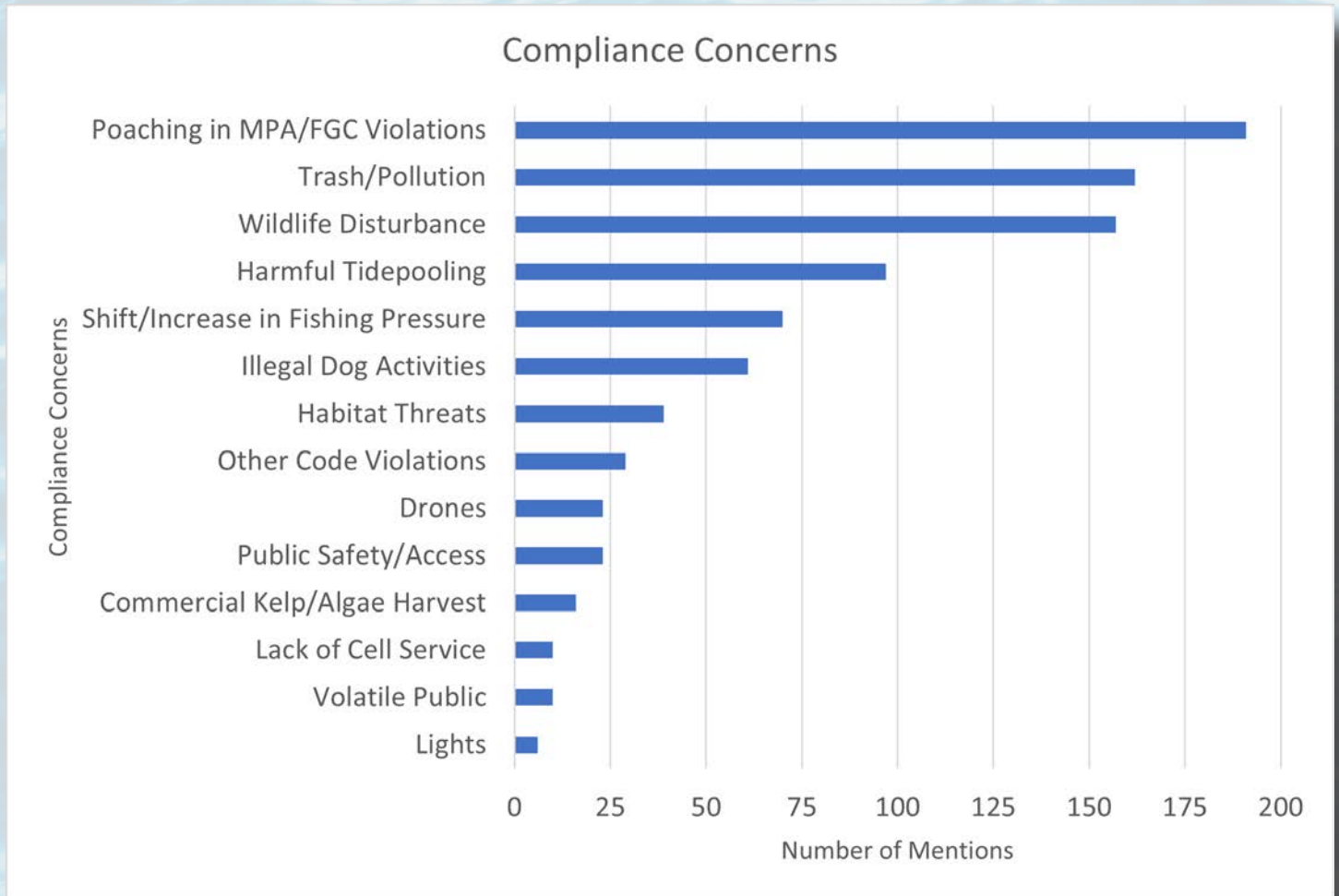
Participant Breakdown

Statewide Compliance Forums Participant Breakdown



- A total of **500 participants attended** the Community Compliance Forums. The majority of attendees identified as non-governmental organizations, individuals community members, government agencies, and science and academia. Volunteers, fishing representatives, ocean businesses, and tribal representatives also attended.
- A total of **684 people registered** for the Forum and received MPA-related information, educational resources, and additional venues for sharing input in the Forum follow-up email.
- It is estimated that the Forums resulted in at least **57 new Collaborative sign-ups**.
- Roughly half of participants surveyed identified as current Collaborative members.

Compliance Concerns



This chart summarizes the number of times each M A compliance concern was mentioned during the Forum discussions and in the post-Forum evaluation forms, Google surveys, and printed surveys. Concerns are organized into general categories based on the overall input from the community.

Compliance Concerns

Compliance Concern Categories in Detail

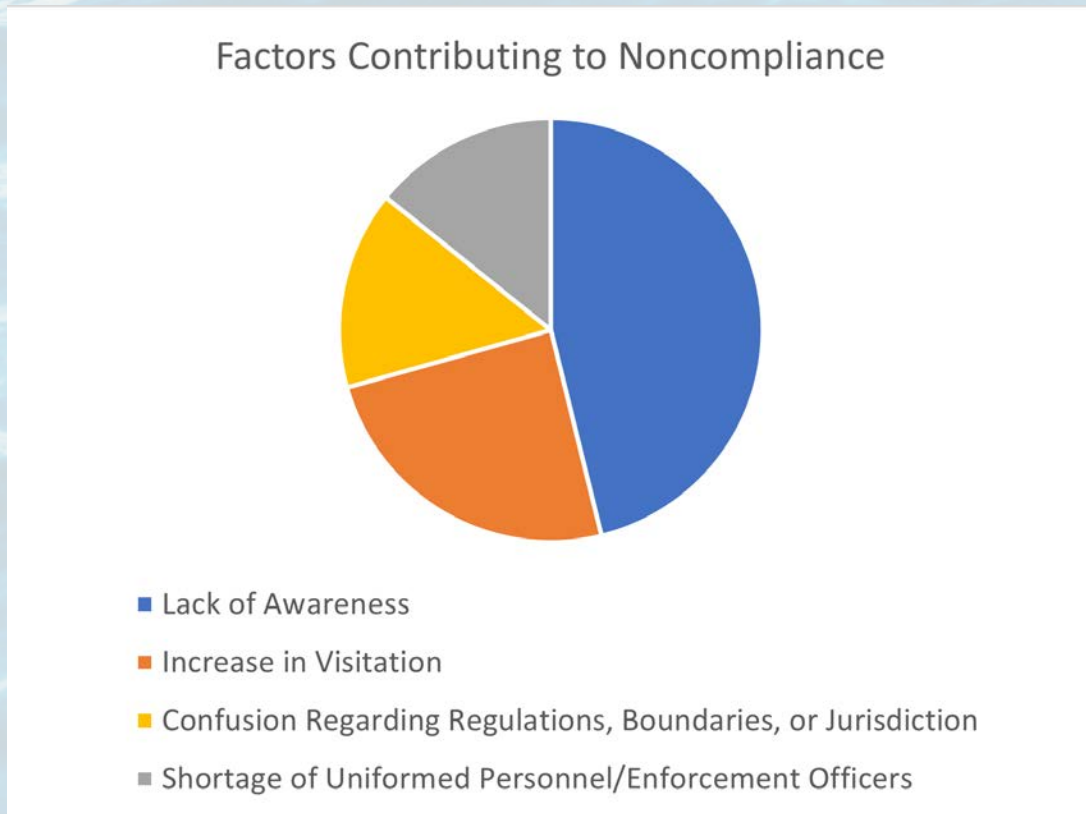
- **Poaching in MPA/FGC Violations** - both recreational and commercial illegal take in marine protected areas and other Fish and Game Code violations (e.g., over limit, undersize, wrong gear type, protected species, etc.).
- **Trash/Pollution** - intentional litter, lost/derelict fishing gear, agricultural/industrial plastic debris, trash, human and dog waste, and water pollution issues (e.g., runoff of pollutants from wildfires and agricultural areas).
- **Wildlife Disturbance** - disturbances to birds and marine mammals from both humans, dogs, and remote devices. This includes “flushing” birds and mammals by causing them to leave their roosting, haul-out, or resting sites, and getting too close (e.g., in kayaks, motorized boats, SUPs, drones, and low flying aircraft). Wildlife disturbance also includes entanglement in marine debris such as fishing line or gear.
- **Harmful Tidepooling** - tidepool activity that was considered harmful by forum participants. Harmful tidepooling includes trampling (by humans and dogs), poor tidepool etiquette such as removing, picking up, or disturbing intertidal organisms and turning over rocks, and any type of intertidal take (harvest/intentional take for consumptive uses or unintentional take). Harmful tidepooling also includes above mentioned impacts to tidepools that are outside of MPAs.
- **Shift/Increase in Fishing Pressure** - a perceived shift or increase in fishing/collecting. Examples include fishing the line, lobster traps/crab pots placed on the line and drifting in, and a shift of fishing/collecting pressure to areas that are near to but outside of MPA boundaries.
- **Illegal Dog Activities** - dogs in prohibited areas, dogs off leash, dog owners not cleaning up waste, and dogs causing wildlife disturbances (e.g., flushing birds or marine mammals).
- **Habitat Threats** - detrimental impacts to key or sensitive habitats such as diminishing dunes, invasive grasses, and loss of eelgrass. An increase in visitation and people accessing and trampling habitat in and near MPAs are negatively impacting sensitive areas (e.g., mudflats, salt marshes). Participants also mentioned kelp forest decline that may be linked to a changing climate and an increase in the local population of urchins, and the subsequent formation of urchin barrens (i.e., areas devoid of kelp and full of urchin).
- **Other Code Violations** - violations to local ordinances or codes occurring near or in MPAs. Examples include illegal camping, illegal dog activity, trespassing, illicit substances, drinking on the beach, spearfishers in designated swim areas, and breaching the creek berm at the ocean outflow.

Compliance Concerns

Compliance Concern Categories in Detail Continued

- **Drones** - drones in prohibited areas (e.g., flying in Parks or over roads) and drones disturbing wildlife.
- **Public Safety/Access** - unsafe public access to the coast or hazardous ocean conditions. Examples include a staircase in need of repair, dangerous “goat trails,” construction zones, unsafe swimming/SCUBA diving areas, speeding boats, lost/derelict fishing gear, and big wave events.
- **Commercial Kelp/Algae Harvest** - excessive and out-of-state (i.e., from Oregon) commercial kelp/algae/seaweed harvest on the North Coast.
- **Lack of Cell Service** – areas that have little to no cell service, which is an issue for safety and apps that geolocate using cell service.
- **Volatile Public** - the public reacting angrily and/or unpredictably when notified of rules by docents or enforcement officers, especially during COVID-19.
- **Lights** - light pollution from hotels, businesses, and restaurants operating at night on or adjacent to MPAs.

Contributing Factors



This chart summarizes the potential factors contributing to noncompliance in or near MPAs mentioned during the Forum discussions and in the post-Forum evaluation forms, Google surveys, and printed surveys. Factors are organized into general categories based on the overall input from the community.

Across all the Forums, participants commonly mentioned an increase in visitation, a lack of awareness, a shortage of both enforcement officers and enforcement action, and confusion regarding regulations, boundaries, or jurisdiction as concerns. Due to their general nature and commonality across the state, these concerns were identified as underlying factors potentially contributing to noncompliance. During 2020, visitation to the coast and MPAs was elevated, especially in the summer months (except during mandated beach closures) in large part due to the COVID-19 pandemic. Note that the San Diego and Orange County Forums were held prior to COVID-19.

Contributing Factors

Potential Factors Contributing to Noncompliance in Detail

- **Lack of Awareness** - the need for more MPA education and outreach (e.g., MPA boundaries/regulations, species permitted to take), signage, translation of signs/materials into different languages for visitors, and general lack of awareness of marine protected areas among the public.
- **Increase in Visitation** - an increase in visitors (locals and tourists) and the associated impact to the area, such as trash, wildlife disturbance, trampling, and illegal camping. The increase in visitation was often linked to the pandemic.
- **Confusion Regarding Regulations, Boundaries, or Jurisdiction** - boundaries that are hard to identify, regulations that are difficult to decipher, or confusion around who has jurisdiction or the ability/responsibility to help with education or enforcement.
- **Shortage of Uniformed Personnel/Enforcement Officers** - a lack of enforcement capacity or presence (including boat patrols), an inability to respond, or a diversion of marine enforcement resources to other priorities.

Recommended Solutions



This chart summarizes the number of times each M A compliance solution as mentioned during the Forum discussions and in the post-Forum evaluation forms, Google surveys, and printed surveys. Solutions are organized into general categories based on the overall input from the community.

Recommended Solutions

Compliance Solution Categories in Detail

- **Signage** - a general need for more, updated, or new informational signage, signage translations, the type of signage (e.g., regulatory signs or interpretive signs), specific and strategic signage locations (e.g., at boundaries and access points), messaging that should be included on signs, and utilization of QR codes that link to translations and more information. Participants also suggested including tribal information and names on signs.
- **Targeted Education & Outreach Programs/Events** - programmatic approaches to stakeholder engagement by targeting/prioritizing specific communities (e.g., tribal, fishing, youth, tourists), and outreach programs and events (e.g., family outreach during the lobster season opener).
- **More Enforcement Officers** – there is a need for more uniformed personnel and/or enforcement officers and actions on the coast and in MPAs. Participants also suggested joint allied agency trainings, fines, more funding, more boat patrols, and wardens dedicated to MPAs.
- **More Docents/Volunteers** – there is a need for docents/volunteers on the coast, in MPAs, and in specific locations to educate visitors. Specific docent/volunteer programs were mentioned as models or as organizations that have members that can be leveraged (e.g., MPA Watch, BayNet, Team Ocean, Sea Life Stewards). Docents/volunteers were also mentioned as a way of assisting enforcement officers in gaining compliance.
- **Digital Resources** - geolocation apps (e.g., FishLegal), CDFW mobile website, notifications when one enters an MPA, boat navigation systems (e.g., Navionics), tourism websites, online resources/social media/videos, virtual reality, Live Dives with Trident remotely operated vehicles, and the Golden Gate MPA Ambassador Online Training Modules.
- **Stakeholder Engagement** - improving engagement with the local Collaboratives, and engagement with priority communities such as BIPOC communities, anglers, tourists, and youth.
- **Printed Materials** - printed MPA brochures, flyers, handouts, and on the water printed outreach materials, including Collaborative-created materials. Another commonly mentioned form of printed material included resources in California Fishing Licenses. These printed materials were often meant to improve awareness in the fishing community, and most commonly recreational anglers.
- **Boundary Markers/Buoys** - marking the MPA boundaries onshore using posts/markings to identify boundaries on land and offshore using buoys. Seasonal buoys were also suggested to mitigate wildlife disturbance.

Recommended Solutions

Compliance Solution Categories in Detail Continued

- **Surveillance Technology** - surveillance cameras (in some cases, high definition), the M2 radar system, and beach/trail cams, including in difficult to access locations, to observe and document poaching in MPAs and wildlife disturbances.
- **More Trash Cans/Receptacles** - there is a need for trash cans and receptacles in general on the coast and for fishing line (monofilament), the need for more trash cans that are animal-proof and/or have lids, and informational displays on trash cans/receptacles on piers and in popular fishing locations.
- **Call CalTIP** - reporting violations to the CalTIP hotline and the need to include the CalTIP phone number on signage and printed materials. The value of reporting violations to CalTIP was mentioned.
- **Regulatory Changes** - potential regulatory changes for fishing and other activities along the coast. One suggested adjustment was to prohibit spear fishing while SCUBA diving. Another suggested adjustment was a legislative change to require fishers to use breakaway leaders to minimize fishing gear loss, especially when fishing from piers.
- **Research/Volunteer Identification** - the need for researchers/volunteers to be easily identifiable (e.g., wear vests, display banners on research boats, temporarily display information at access points during surveys/monitoring). Similarly, participants expressed a need to create a web platform with a notification system for advertising/sharing research activities, especially activities with a Scientific Collection Permit (SCP).
- **MPA Boundary Photos** - the utility of the surveyed MPA boundary photos shown in the presentation (produced for enforcement training manuals) for use in public outreach materials/signs.
- **Access Fees/Safety/Emergency Phone** - implementing access fees to limit the number of visitors to crowded areas of the coast, having an emergency phone available (in areas with poor to no cell service), ADA compliant ramps at the coast for greater access, and public safety (e.g., restricting boats near swimmers, SCUBA divers).
- **Human Attitudes & Violations Data** - conducting an academic study on human attitudes towards MPAs. Record keeping and sharing of MPA violations (e.g., CalTIP data).
- **Culturally Relevant Outreach/Translations** - the need to be culturally sensitive while doing outreach, both verbally and in written form (e.g., signs). Though local and universal symbols/imagery for MPA messaging to improve awareness and ocean stewardship was also mentioned.

Recommended Solutions

Compliance Solution Categories in Detail Continued

- **Monitoring/Restoration** - restoration of native species/habitats, managing invasive species (i.e., grasses), and long-term monitoring projects to assess the success of the restoration work.
- **Prosecution/MPA DA Task Force/Human Use Data** - improved prosecution of MPA related violations, especially wildlife disturbances. This need may be addressed through a MPA Task Force of District Attorneys (DAs). Human use data, such as from MPA Watch surveys, in an online portal, would help inform the need to enforce and prosecute.
- **Apply for Funding** - applying for a Department of Boating and Waterways grant to elevate the enforcement capacity of a docent program and implementing a local parking pass with fees going to help support stepped up enforcement.
- **Use of Special Closures** - the use of special closures to observe influence on depools.
- **Manuals** - creating and providing more of the MPA Training Manuals created for allied agency officers.
- **Water Quality Regulations** - specific codes and regulations to use (e.g., for cleaning) to address dumping and water quality violations.

Conclusions

Overview of Statewide Compliance Concerns, Solutions, and Enforcement Partners

• What are our high priority needs?

- ◇ There is a need across the state to address poaching in MPAs and Fish & Game Code (FGC) violations and trash/pollution through coordinated and collaborative efforts.
- ◇ Wildlife disturbance (marine mammals, birds) and harmful tidepooling are also high priority compliance concerns statewide.

• What programs or projects could be used to increase compliance?

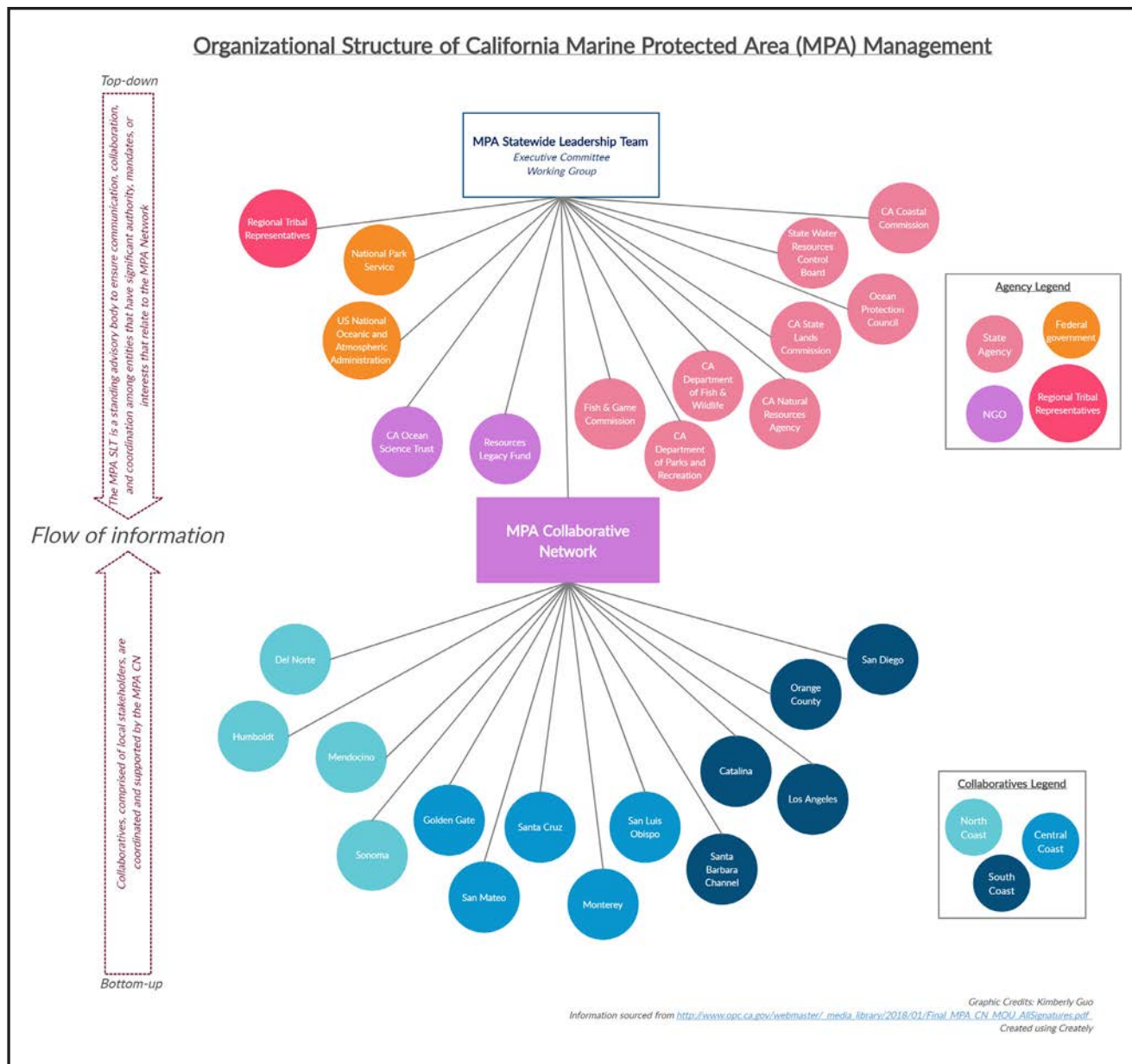
- ◇ Signage is needed in strategic locations. A variety of sign type are needed and depend on the MPA and intended audience. Regulatory signs and friendly, creative, and highly visible signs with more pictures/universal symbols and translations are needed.
 - A statewide signage evaluation and working in underrepresented communities can help bridge knowledge gaps about the effectiveness of MPA signage.
- ◇ Targeted education and outreach programs/events to engage more diverse stakeholders, particularly youth, fishermen, tribes, and tourists, was a top solution statewide.
- ◇ More enforcement officers, especially officers dedicated to the coast, MPAs, and/or high impact intertidal areas are of great need.
- ◇ More docents/volunteers can help educate the public to improve awareness of MPAs, FGC regulations, and tidepooling/wildlife viewing etiquette to help gain compliance.
- ◇ A common theme throughout the Forums was the need for more cultural sensitivity and to view MPA compliance through a Diversity, Equity, Inclusion (DEI) lens.
 - A DEI panel series could be used to get input from specific communities on their relationship with the ocean and coastal resources, what messages resonate with them, and how to increase participation and engagement with these communities

• What key partners need to be at the table to assist with law enforcement?

- | | |
|--|---|
| ◇ California Department of Fish & Wildlife | ◇ Harbor Police, Harbor Patrol, and Harbormasters |
| ◇ Oregon Department of Fish & Wildlife | ◇ US Coast Guard |
| ◇ California State Parks | ◇ National Park Service |
| ◇ City Park Rangers | ◇ Bureau of Land Management Rangers |
| ◇ County Park Rangers | ◇ NOAA Office of Law Enforcement |
| ◇ Police Offices | ◇ NOAA National Marine Sanctuaries |
| ◇ County Sheriffs | ◇ US Fish & Wildlife Service |
| ◇ California Highway Patrol | ◇ District Attorneys |
| ◇ Lifeguards | ◇ Other allied agencies/uniformed personnel |

Issues for Elevation

As a member of the [MPA Statewide Leadership Team](#) (MSLT), the MPA Collaborative Network can elevate issues, concerns, and ideas shared by stakeholders at the local level to the State managing agencies that have jurisdiction over MPAs in California. Issues identified during the Forums that have a potential for elevation and discussion with the MSLT are organized on the following pages by county.



Issues for Elevation

Issues for potential elevation and discussion with the MSLT organized by county

• Del Norte

- ◇ Need for an overall re-evaluation of kelp/seaweed management, including
 - Adjustments to commercial kelp/seaweed harvest regulations/leases,
 - Outreach to Oregonian kelp harvesters/managers/ODFW,
 - Improved harvest and permit data transparency, and
 - and a potential petition to the Fish & Game Commission to consider limiting the commercial take of kelp/seaweed, initiated by Del Norte Collaborative members.
- ◇ Need a web data tool to track and inform the public about SCPs/commercial permits.

• Humboldt

- ◇ Need to address commercial kelp/seaweed/marine plants harvest (analogous to Del Norte) and decline, and related habitat/ecosystem threats (e.g., eelgrass), particularly with research and monitoring.
- ◇ Revisit the need for MPA boundary markers or flags at the southern boundary of Reading Rock between the SMCA and SMR.

• Mendocino

- ◇ According to one Warden, there is frequent illegal shore fishing at Hearn Gulch in Saunders Reef SMCA, but a local judge throws cases out due to inadequate signage.
- ◇ Proposed development and timber operations in Big River Estuary SMCA, including what is laid out in the Timber Harvesting Plan, is a compliance concern in need of interagency collaboration.

• Sonoma

- ◇ The Estero Americano State Marine Recreational Management Area (SMRMA) riverine estuary is split down the middle by Marin and Sonoma Counties and there is confusion regarding who has jurisdiction at the beach by the river mouth to enforce illegal camping.
- ◇ Leadership should revisit buoys and boundary markers, particularly buoys in the estuaries that may need less maintenance (Russian River).

• San Mateo

- ◇ Pillar Point SMCA and adjacent intertidal areas were identified areas of concern because of unsustainable harvest (e.g., snails, mussels) and impacts of thousands of visitors to the deepools. Area could be “wiped clean” even if everyone only takes their legal limit, suggesting a need for regulation change to intertidal take or temporary closure/moratorium.
- ◇ Boundary line between Montara SMR and Pillar Point SMCA needs to be adjusted for ease of outreach and enforcement.

Issues for Elevation

Issues for potential elevation and discussion with the MSLT organized by county continued

- **Golden Gate**

- ◇ Golden Gate Collaborative members have reported the increase in visitors and intertidal impact at Duxbury Reef to the Fish and Game Commission.

- **Santa Cruz**

- ◇ Need to address the hydrochloric acid barrels draining into the lagoon at the northern boundary of Natural Bridges SMR (at Four Mile beach).

- **Monterey**

- ◇ Implementing seasonal buoys/markers on the water in sensitive areas like haul out sites was a widely applicable recommended solution aimed at deterring people from approaching and disturbing marine life (e.g., harbor seal pups).
- ◇ Potential regulatory changes suggested during the Monterey Forum include
 - preventing spearfishers from using SCUBA in the Pacific Grove Marine Gardens SMCA, because SCUBA allows spearfishers to go deeper and take more as they are not limited to their breath hold.
 - requiring fishers to use breakaway leaders to minimize fishing gear loss, especially when fishing from piers,
 - boundary adjustments to Carmel Bay SMCA at Malpasos Beach (at the southern boundary so the beach is split evenly instead of in two-thirds) and to Elkhorn Slough SMR at Kirby Park (move the northern boundary south so people can fish off the pier).

- **San Luis Obispo**

- ◇ Participants proposed revisiting installing a camera near the tagpole looking south at Point Buchon. A camera or the M2 radar system could inform officers and help address onshore poaching regularly occurring there. Approval by Pacific Gas & Electric (PG&E) is needed through a request from a government agency.
- ◇ Need to address the confusing boundaries due to the angle of the boundary relative to the coastline at Piedras Blancas SMR (southern boundary) and the border between Cambria SMCA and White Rock SMCA.

- **Santa Barbara Channel**

- ◇ Need to revisit how to get MPA outreach materials into fishing license materials, starting in the Santa Barbara Channel region.
- ◇ Need to address poaching in MPAs/FGC violations around the Channel Islands. The islands need more enforcement attention including frequent boat patrols.

Issues for Elevation

Issues for potential elevation and discussion with the MSLT organized by county continued

- **Catalina**

- ◇ A community member is working on a project to install bronze statues in dive parks around the world, which helps to fundraise for ocean awareness. The next proposed location for a statue was in the Casino Point Dive Park, which the community thought was an excellent opportunity for positive MPA outreach and a tourism alternative to “fish feeding” which was deemed more impactful. This project was raised to CDFW and categorized as an incompatible use in MPAs, despite a long history of this dive park using such features and strong support from the City of Avalon.

- **Los Angeles**

- ◇ Addressing environmental justice issues (access, equal treatment) in ocean resource management and to remove barriers through cross-agency coordination is a top priority. There is a need for a systematic change in recruitment, training, and funding/resources for CDFW Wardens (e.g., more and diverse CDFW wardens/officers patrolling the coast/MPAs).
- ◇ There is a need for increased involvement from local law enforcement in the field to write citations and District Attorney offices to prosecute, especially to address unsustainable levels of intertidal take that occurred during 2020.

- **Orange County**

- ◇ There is a need to address if MPA boundaries aligned with bridges incorporate the area beneath the bridge into the MPA, and exactly where the line is (e.g., seaward side of bridge).
 - Participants suggested getting an encroachment permit from Caltrans to stencil no fishing on bridge columns that are Caltrans property. Caltrans has shared encroachment permit process for Bolsa Chica bridge on the Pacific Coast Highway (PCH).
- ◇ There is a need to understand how to reconcile when long-term management policies developed for ecological reserves conflict with MPA regulations in estuary MPAs (e.g., Bolsa Chica Ecological Reserve and Bolsa Chica SMCAs; Newport Bay SMCA and Upper Newport Bay Ecological Reserve).

- **San Diego**

- ◇ There is a need to determine if boundaries that are aligned with bridges incorporate the area beneath the bridge into the MPA.
- ◇ There is a need to determine how to handle long-term management policies developed for ecological reserves that conflict with MPA regulations in estuary MPAs.
- ◇ Participants want to address city runoff and pollution of waterways/MPAs during construction projects.
- ◇ There needs to be more outreach on what is included in the definition of “pelagic fish,” and “no take,” which includes the take of rocks.

Glossary

The Glossary defines the acronyms used in any or all the Compliance Forum Reports.

- **ADA:** American Disabilities Act
- **ASBS:** Area of Special Biological Significance.
- **BIPOC:** Black, Indigenous, and people of color.
- **CalTIP:** Californian's Turn in Poachers and Polluters.
- **CDFW:** California Department of Fish and Wildlife.
- **CHP:** California Highway Patrol.
- **COVID-19:** Coronavirus Disease 2019 (also referred to as COVID and the pandemic).
- **CPFV:** Commercial Passenger Fishing Vessel (also referred to as a party boat).
- **DA:** District Attorney.
- **FGC:** Fish and Game Code.
- **GPS:** Global Positioning System.
- **HOA:** Homeowner's Association
- **M2:** Marine Monitor (M2) Radar System.
- **MPA:** Marine Protected Area.
- **MSLT:** MPA Statewide Leadership Team.
- **NMS:** National Marine Sanctuary.
- **NOAA:** National Oceanographic and Atmospheric Administration
- **NPS:** National Park Service.
- **OLE:** Office of Law Enforcement (within NOAA).
- **QR:** Quick Response [code].
- **SCP:** Scientific Collecting Permit.
- **SCUBA:** Self-contained Underwater Breathing Apparatus.
- **SMCA:** State Marine Conservation Area.
- **SMR:** State Marine Reserve.
- **SMRMA:** State Marine Recreational Management Area.
- **SUP:** Stand Up Paddle Board.
- **ROV:** Remotely Operated Vehicle.
- **UC:** University of California.
- **USFWS:** United States Fish and Wildlife Service.
- **USCG:** United States Coast Guard.

Page left intentionally blank



**OCEAN
PROTECTION
COUNCIL**

These materials and MPA Community Compliance Forums made possible by a grant from the California Ocean Protection Council's Once-Through Cooling (OTC) Interim Mitigation Fund.

**Learn more about the MPA Collaborative Network at
www.mpacollaborative.org**

Join your local MPA Collaborative to get involved in bottom-up resource management.

**Visit the California MPA website at
www.wildlife.ca.gov/MPAs**

Los Angeles County



Marine Protected Area (MPA) Community Compliance Forum Report September 15 & 16, 2020

With support and funding from:



About

The **MPA Collaborative Network's Compliance Initiative** is supported by Ocean Protection Council (OPC) Once-Through Cooling funds, and in partnership with the Department of Fish and Wildlife (CDFW), the California District Attorneys Association, and Resources Legacy Fund. It is a multi-year initiative that aims to improve the compliance and enforcement of California's network of MPAs through community compliance forums, allied agency enforcement trainings, prosecutor training, and MPA violation data collection.

The individual **Community Compliance Forums** held for each coastal county provided space for local stakeholders to voice their MPA, ocean, and coastal compliance concerns and brainstorm ideas to address those concerns. The Collaborative Network hosted two in-person forums (pre-pandemic) and 13 virtual forums. Five hundred community members participated, resulting in over 2,200 compliance concerns and solutions mentioned during 40+ hours of engagement.

Two virtual forums were held for Los Angeles County, one focused on the Malibu area and one focused on the Rancho Palos Verdes (RPV) area. This report summarizes the input gathered from stakeholders during the both of the Los Angeles County Forum discussions as well the input provided in the post-Forum evaluation forms, Google surveys, and printed surveys.

Refer to the separate **Statewide Compliance Forum Report** for more information about the universal categories used to group mentioned compliance concerns and solutions. Refer to the **Glossary** at the end of this report for definitions of commonly used acronyms.

Key Takeaways

- It is essential that allied agency enforcement trainings incorporate guidance from communities that are not adequately represented at the forum and may be more impacted by a coastal enforcement presence (e.g., Black, Indigenous, people of color, anglers).
- Education and outreach about MPAs and ocean stewardship need to happen at the community level, ahead of visiting the coast, through engagement with organizations already working with/in these communities.
- “Know your regulations and location of MPAs” educational materials should be incorporated into fishing licenses.
- More docents/volunteers are needed to educate beach visitors about take and MPAs, especially in tidepools (e.g., Abalone Cove, Paradise Cove).
- There is a need for more outreach on reporting violations to CalTIP.

Highlighted Compliance Concerns

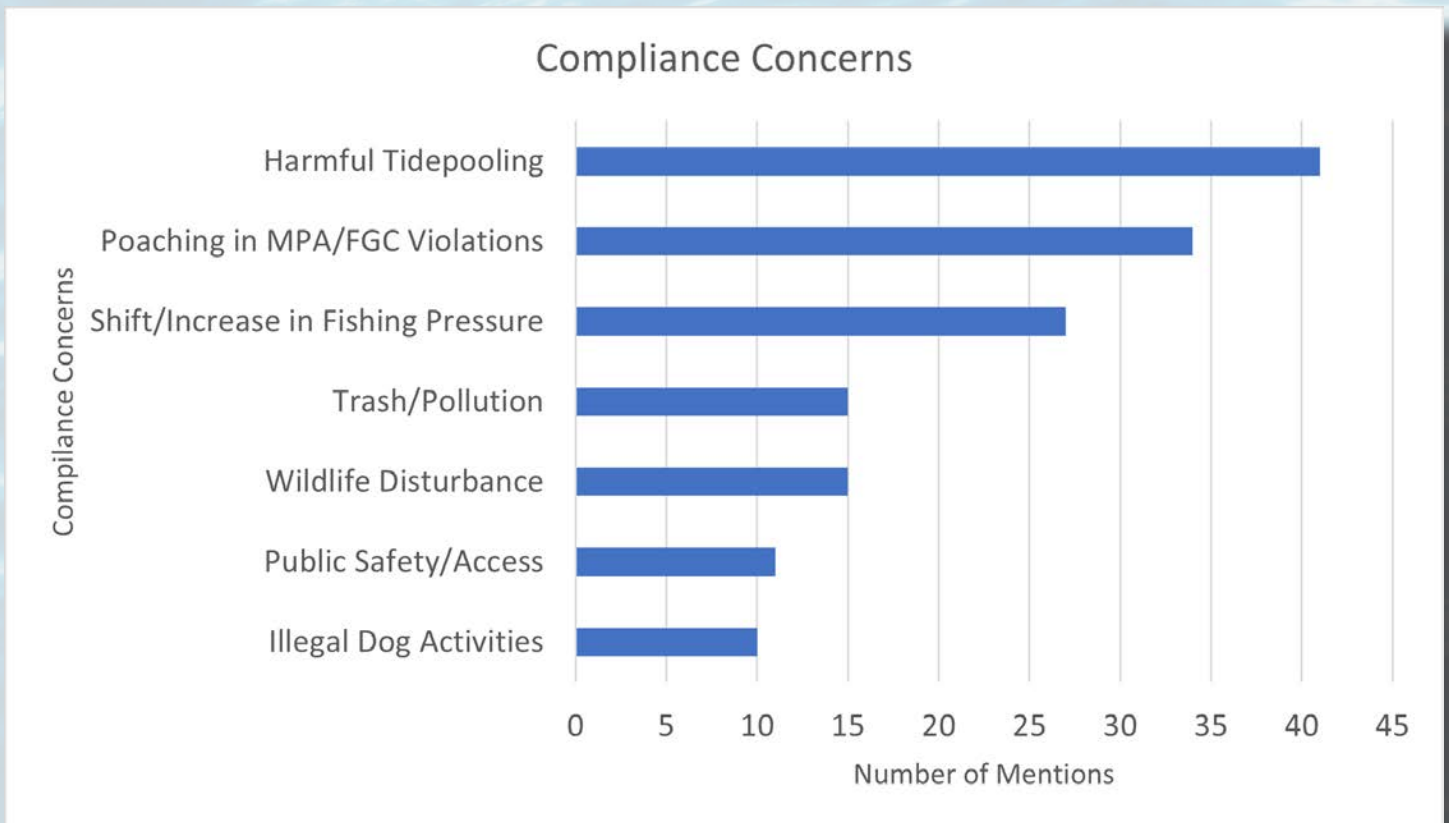
- Tidepooling impacts and unsustainable take is occurring, especially in Paradise Cove, Abalone Cove, and White Point.
- Boats are seen fishing in the early morning and on busy weekends off Lechuá in Point Dume SMCA and in Point Vicente SMCA.
- There is illegal hook and line fishing from shore at Broad Beach and El Matador in the Point Dume SMCA, in Pelican Cove in Point Vicente SMCA, and in front of Vanderlip Park in Abalone Cove SMCA.
- Spear/kayak fishing is occurring in Point Dume SMR.

Participant Breakdown



- A total of **85 participants attended** the Community Compliance Forums with 26 participants at the Malibu Forum and 59 participants at the Rancho Palos Verdes (RPV) Forum.
- The majority of attendees identified as individual community members, non-governmental organizations, and volunteers. Science and academia, government agency, and fishing representatives also attended.
- A total of **109 people registered** for one or both Forums and received MPA-related information, educational resources, and additional venues for sharing input in the Forum follow-up email.
- It is estimated that the Forum resulted in at least **8 new Collaborative sign-ups**.
- In-meeting room poll results indicated that 43% of respondents were “Very Familiar” with MPAs, 54% of respondents were “Somewhat Familiar” with MPAs, and 3% were “Not Familiar” with MPAs.

Compliance Concerns



This chart summarizes the number of times each M A compliance concern was mentioned during the Forum discussions and in the post-Forum evaluation forms, Google surveys, and printed surveys. Concerns are organized into general categories based on the overall input from the community. See the Statewide Compliance Forum Report for more category detail.

Compliance Concerns

Compliance Concerns in Detail

• **Harmful Tidepooling**

- ◇ Poor tidepool etiquette (removing, picking up, or disturbing intertidal organisms and turn over rocks) has been observed in Malibu and Rancho Palos Verdes.
- ◇ Illegal tidepool take is occurring in Paradise Cove and Abalone Cove
- ◇ Excessive tidepooling impacts have also been observed at Pelican Cove (off Terranea Resort and at White Point and Sacred Cove.

• **Poaching in MPA/FGC Violations**

- ◇ Illegal hook and line fishing from shore at Broad Beach is a major concern
- ◇ Illegal hook and line fishing from shore is also occurring at El Matador in the Point Dume SMCA, in Pelican Cove in Point Vicente SMCA, and in front of Vanderlip Park in Abalone Cove SMCA.
- ◇ Multiple vessels are anchored and potentially fishing in the Point Vicente No-Take SMCA nice weekends.
- ◇ At Point Dume SMR, there is illegal take of lobsters at night.
- ◇ Lobster traps have been spotted in Point Vicente No Take SMCA
- ◇ Boats have been observed fishing in Paradise Cove and Little Dume in Point Dume SM
- ◇ Spearfishers are illegally fishing near the stairs at Big Dume in the Point Dume SMR and off t rock in Pelican Cove in Point Vicente No Take SMCA.
- ◇ In the early morning, offshore poaching may occur from fishing vessels off El Matador bea
- ◇ People are throwing nets late at night at Trancas Creek.
- ◇ Lights have been observed in the early morning in the Abalone Cove tidepools and people have been caught taking huge buckets of urchins, mussels, snails and limpets.
- ◇ Unlawful tidepool take is also occurring at Paradise Cove, Pelican Cove, White Point, and Sacred Cove.

• **Shift/Increase in Fishing Pressure**

- ◇ There has been increased fishing pressure at Broad Beach in Malibu
- ◇ Individuals fish at or near the boundary line near the Vicente Bluffs Reserv
- ◇ The number of boats has increased significantly around Paradise Cove and Little Dume; som boats are fishing
- ◇ There has been a huge impact at Sacred Cove as tidepoolers/hook and line fishers are directe to move south out of the Abalone Cove SMCA.

Compliance Concerns

Compliance Concerns in Detail Continued

- **Trash/Pollution**

- ◇ Participants discussed general pollution, trash, and lost fishing gear
- ◇ Dumping of construction waste, which is an Areas of Special Biological Significance (ASBS) violation, was observed at Point Dume SMR and at El Matador in Point Dume SMCA
- ◇ Lost lobster traps wash ashore in Point Dume SMCA.

- **Wildlife Disturbance**

- ◇ Marine mammal disturbance (e.g., getting too close, harassment, flushing of animals) occurs the rookery in Pirates' Cove in Point Dume SMR.

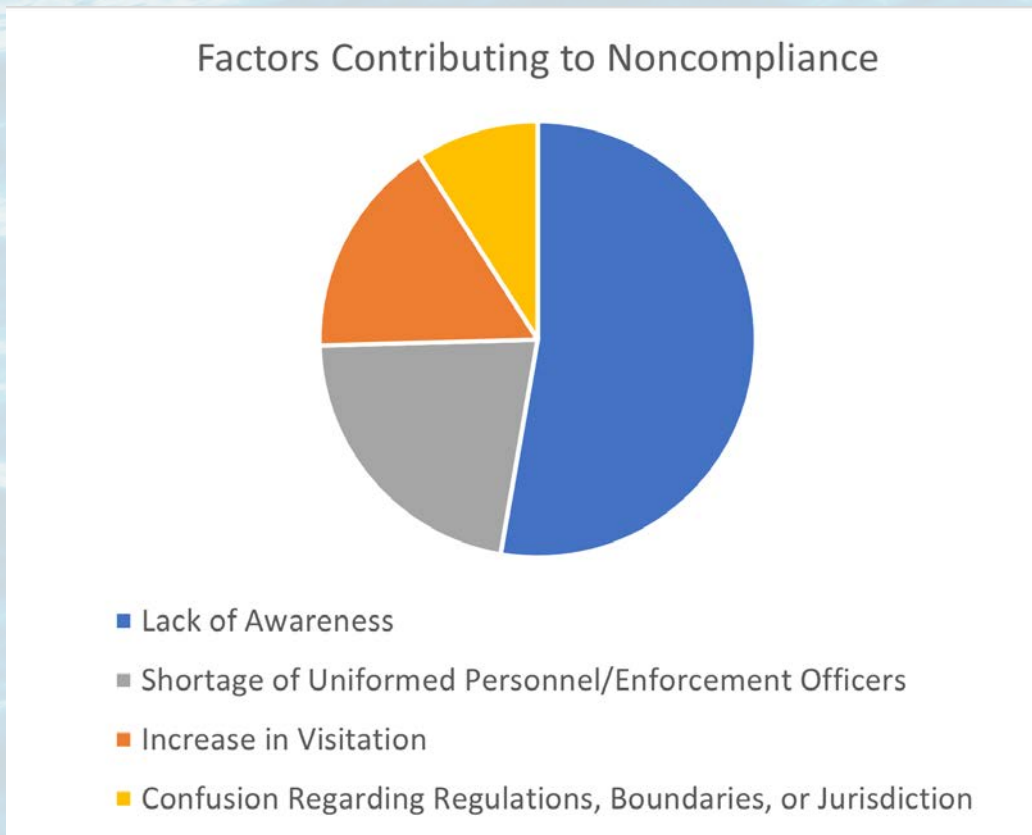
- **Public Safety/Access**

- ◇ Participants were generally concerned about safety at access points to MPAs and coastal security.
- ◇ Home owners are yelling at beach goers below the mean high tide, telling them (erroneously) they are on private property at El Matador Beach.
- ◇ The staircase at Broad Beach needs repair.
- ◇ Illegal immigrants coming from Mexico land their pangas on the beach (weekly) to move personnel and supplies. Los Angeles County Lifeguards at Point Dume are aware of this safety/security issue.
- ◇ Unauthorized trail use of illegal spur trails occurs in the Vicente Bluffs Reserve (e.g., South East of Seascape Trail and Vista Point - Calle Entradero Parking Lot). Less of these violations occur at Terranea, or Pelican Cove. Most of these violations occur throughout the day, but because they are difficult to access for enforcement personnel on foot, folks are less likely to be informed about legal access routes.
- ◇ On multiple occasions, RPV Rangers have had to take down a system of cables and ladders. It appears this was illegally set up by fishermen to access the beach and the MPA.

- **Illegal Dog Activities**

- ◇ There are many dog walkers and some off leash dogs, potentially flushing birds, at Point Dume

Contributing Factors



This chart summarizes the potential factors contributing to noncompliance in or near MPAs mentioned during the Forum discussions and in the post-Forum evaluation forms, Google surveys, and printed surveys. Factors are organized into general categories based on the overall input from the community. See the Statewide Compliance Forum Report for more category detail.

Across all the Forums, participants commonly mentioned an increase in visitation, a lack of awareness, a shortage of both enforcement officers and enforcement action, and confusion regarding regulations, boundaries, or jurisdiction as concerns. Due to their general nature and commonality across the state, these concerns were identified as underlying factors potentially contributing to noncompliance. During 2020, visitation to the coast and MPAs was elevated, especially in the summer months (except during mandated beach closures) in large part due to the COVID-19 pandemic.

Contributing Factors

Potential Factors Contributing to Noncompliance in Detail

- **Lack of Awareness**

- ◇ There is a general lack of awareness among the public.
- ◇ There is unawareness around tidepooling etiquette, tidepool take regulations, and fishing regulations, particularly at Abalone Cove and Paradise Cove.

- **Shortage of Uniformed Personnel/Enforcement Officers**

- ◇ There is a general lack of enforcement capacity, presence, boat patrols, and ability to respond to all CalTIP calls.

- **Increase in Visitation**

- ◇ Participants were concerned about the increase in visitors (locals and tourists) that occurred during the pandemic and the associated impact to the area, such as trash, wildlife disturbance, trampling, etc.
- ◇ Intertidal areas at Broad beach (Malibu) and Abalone Cove (RPV) have experienced a dramatic increase in visitation.

- **Confusion Regarding Regulations, Boundaries, or Jurisdiction**

- ◇ Participants referenced boundaries were hard to identify, regulations were difficult to decipher, that there was confusion around who had jurisdiction, or the ability/responsibility to help with education or enforcement in a particular area.
- ◇ Some participants noted that the fishing regulations can be confusing, and it is difficult to find information on regulations on the CDFW website.
- ◇ Signage and boundaries can be confusing at Abalone Cove.

Recommended Solutions



This chart summarizes the number of times each M A compliance solution as mentioned during the Forum discussions and in the post-Forum evaluation forms, Google surveys, and printed surveys. Solutions are organized into general categories based on the overall input from the community. See the Statewide Compliance Forum Report for more category detail.

Recommended Solutions

Recommended Compliance Solutions in Detail

• **Signage**

- ◇ There is a general need for more, updated, or new signage, and sign translations
- ◇ Signage is needed at Broad beach. It is difficult to get signage on private property (i.e., HOA at Broad beach). A brown regulatory fishing sign (fishing line with anti-symbol) is needed. User-friendly signs with a Spanish translation was suggested.
- ◇ The interpretive “You Are Here” sign is mangled at top of the ramp at private access from Paradise trailer park.
- ◇ There is a sign missing at El Matador beach.
- ◇ The Marina Del Rey sign placement (on the back of the restrooms) is poor; signs need to be highly visible.
- ◇ White Point signage with rules and regulations pictures would be helpful. The flyer that CDF made for the tidepools would be great as a sign
- ◇ One potential solution is to put signage on the back of the lifeguard tower at Abalone Cove (like Point Dume).
- ◇ Signs should be image based and regulatory, as opposed to interpretive signs
- ◇ The “no fishing in an MPA” sign at Westward beach has graffiti over the CalTIP number could really use a larger, more colorful, attractive sign
- ◇ Signs with MPA regulations and a trail map need to be posted at the start and end of the trail to Abalone Cove.

• **Targeted Education & Outreach Programs/Events**

- ◇ There is a general need for MPA-related educational programs and outreach events
- ◇ Cultural sensitivity and addressing underserved/disconnected communities was a priority
- ◇ Participants suggested translating verbal contacts/materials (e.g., Mandarin, Japanese) and translating the Forum in real time (e.g., Spanish)
- ◇ “Know your regulations and location of MPAs” educational materials should be incorporated into fishing licenses at time of purchase

• **More Docents/Volunteers**

- ◇ Participants expressed a need for more volunteer docents (and paid staff) at popular locations (e.g., tidepools) and docent training programs

• **More Enforcement Officers**

- ◇ Participants suggested enforcement-focused solutions including more enforcement officers, getting officers more engaged, and a joint allied agency enforcement team

Recommended Solutions

Recommended Compliance Solutions in Detail Continued

- **Human Attitudes & Violations Data**

- ◇ Participants suggested doing an academic study on human attitudes towards MP
- ◇ Record keeping and sharing of MPA violations (e.g., CalTIP data) was mentioned

- **Stakeholder Engagement**

- ◇ There needs to be more and diverse engagement in the Los Angeles Collaborative, specifically getting people involved from groups historically denied access to the coast, who may have or currently experience discrimination and prejudice, and who speak languages other than English.

- **Boundary Markers/Buoys**

- ◇ Buoys were suggested to mark the boundaries of Point Dume SMCA/SMR in Malibu.
- ◇ Onshore boundary markers are needed at the Abalone Cove/Point Vicente SMCA's boundary.

- **Printed Materials**

- ◇ The LA MPA and fishing brochure in English and Spanish has been effective

- **Digital Resources**

- ◇ Participants suggested digital resources including a better mobile app with MPAs (e.g. FishLegal, CDFW mobile app, and using an app like Monterey Bay's Seafood Watch as a model) as a compliance solution

- **Manuals**

- ◇ Printing Los Angeles MPA Training Manuals and distributing them to allied agency officers is a priority.

Wrap-Up Discussion

1. What are our high priority needs?

- Need to improve inclusivity and prioritize intersectional environmentalism
- Highly visible regulatory signage is needed, especially in impacted/often visited locations
- More enforcement and record keeping of violations is needed

2. What programs or projects could be used to increase compliance?

- Volunteer patrols can be used to educate people in tidepool
- Allied agency/joint trainings
- Need to revisit incorporating M&A educational materials into fishing licenses

3. What key partners need to be at the table to assist with law enforcement?

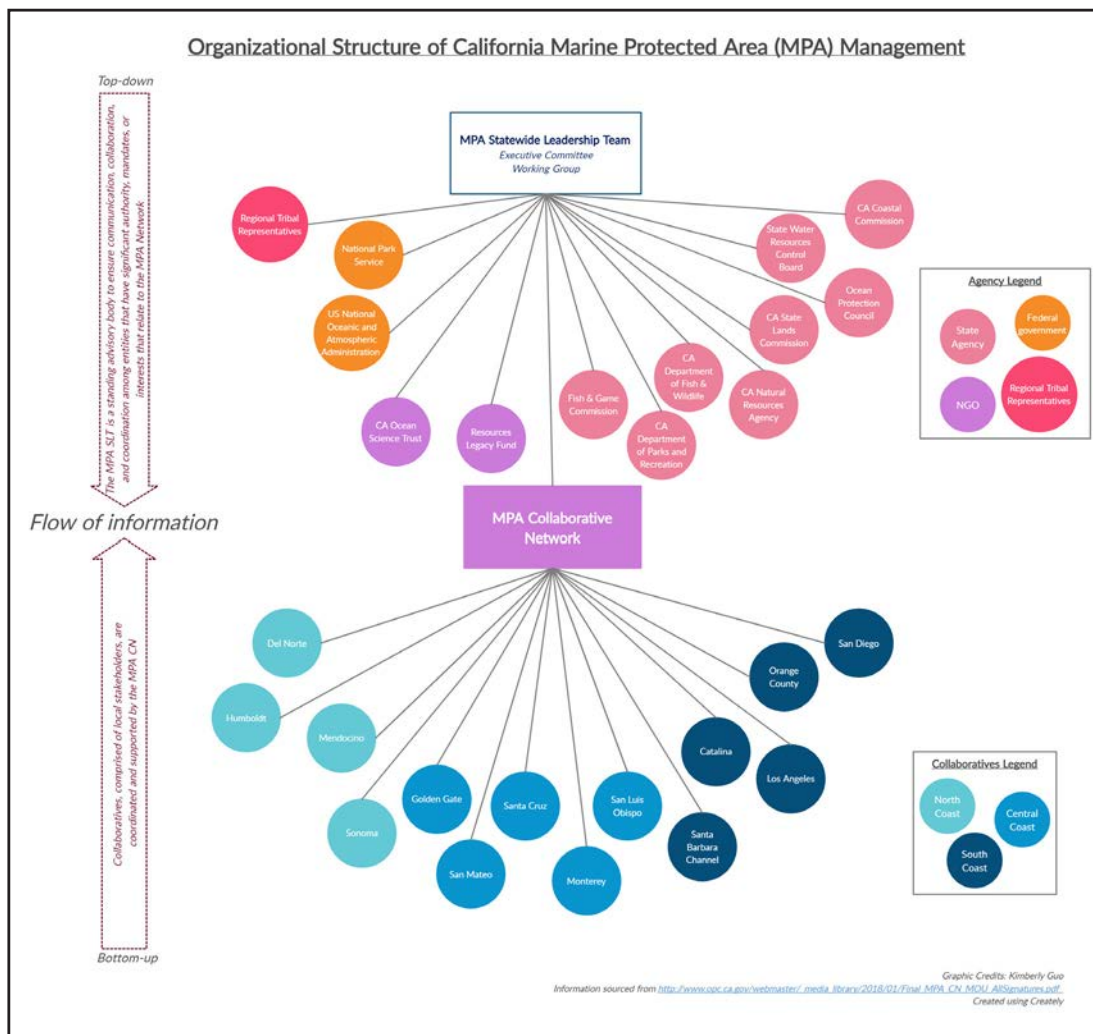
- California Department of Fish & Wildlife (CDFW)
- City of RPV Park Rangers
- California State Parks
- LA County Lifeguards
- LA County Sheriffs
- US Coast Guard
- NOAA Office of Law Enforcement (OLE)
- District Attorneys
- Other allied agencies (uniformed personnel)

Issues for Elevation

As a member of the [MPA Statewide Leadership Team](#) (MSLT), the MPA Collaborative Network can elevate issues, concerns, and ideas shared by stakeholders at the local level to the State managing agencies that have jurisdiction over MPAs in California.

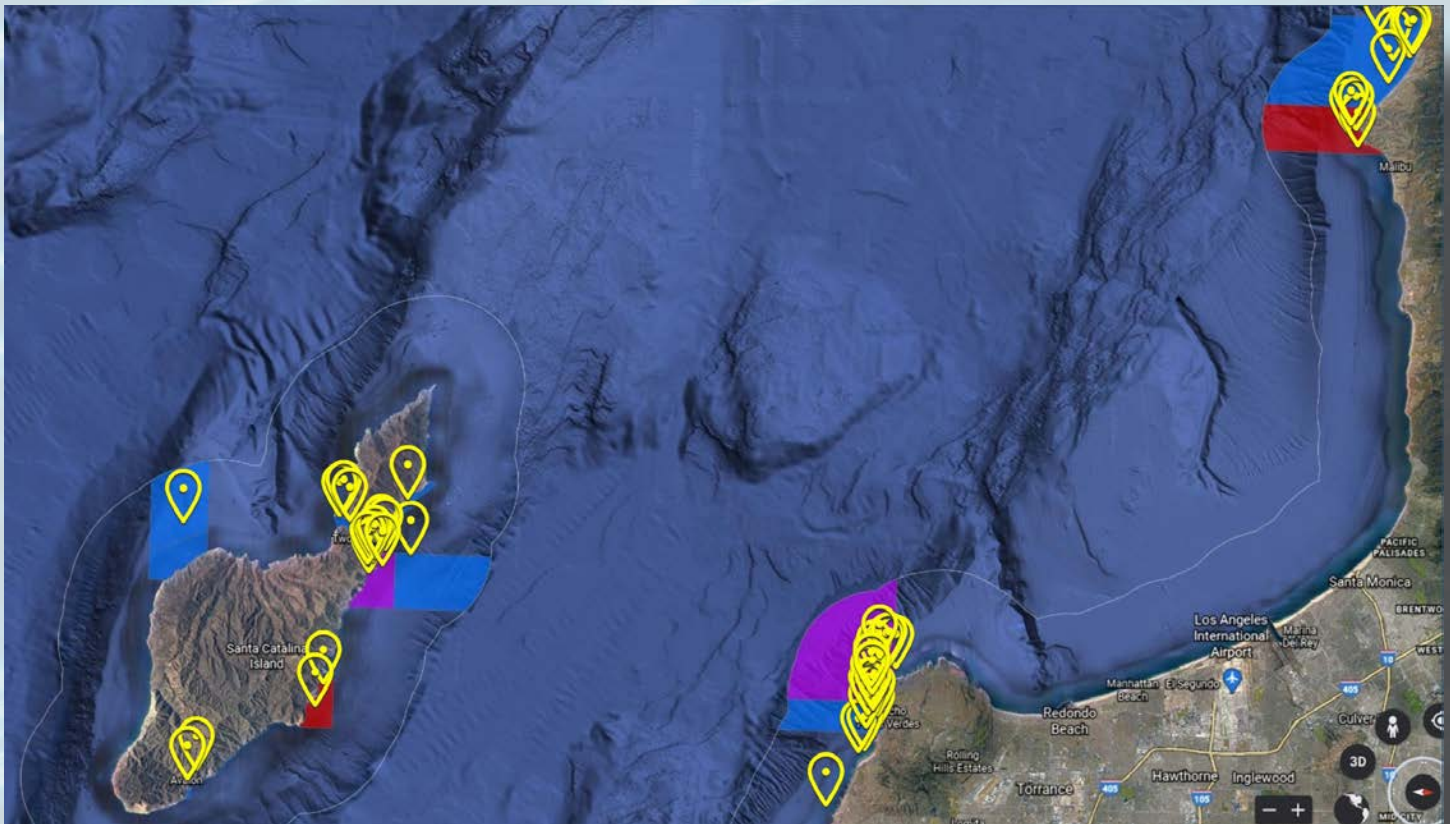
Issues identified during the Forum that have a potential for elevation and discussion with the MSLT include:

- ◇ Addressing environmental justice issues (comfortability, access, equal treatment) in ocean resource management and to remove barriers through cross-agency coordination is a top priority. There is a need for a systematic change in recruitment, training, and funding/resources for CDFW Wardens (e.g., more CDFW wardens/offices patrolling the coast/MPAs).
- ◇ There is a need for increased involvement local law enforcement in the field to write citations and District Attorney offices to prosecute, especially to address unsustainable levels of intertidal take that occurred during 2020.



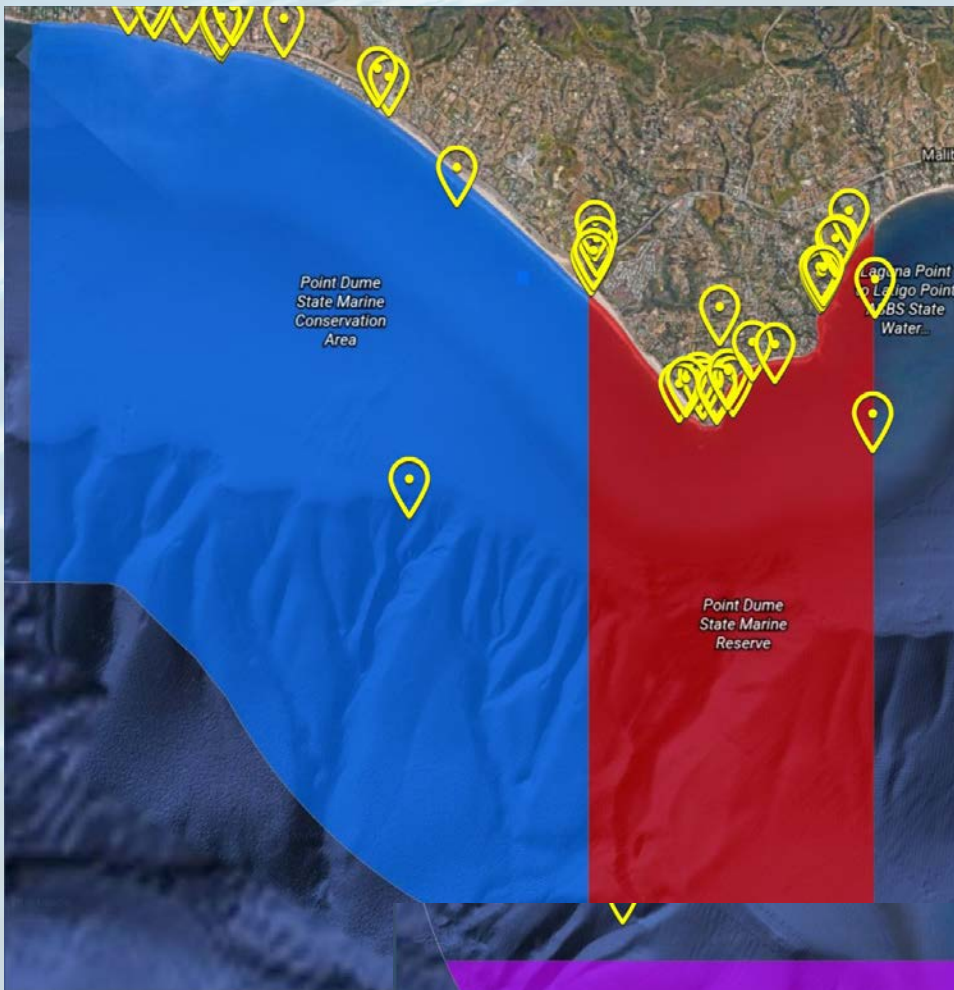
Interactive Map Results

Areas of MPA compliance concern were anonymously identified by Forum participants on interactive maps using the virtual collaboration platform Poll Everywhere. A total of 25 participants put pins on the map with 141 total responses (pins). Yellow pin shapes indicate the location of a virtual push pin placed by a participant. The pinned areas corresponded with the MPA compliance discussions.



Identified areas of concern in and near all Los Angeles County MPAs (mainland and Catalina).

Interactive Map Results



Identified areas of concern in and near Point Dume SMCA and SMR (left).



Identified areas of concern in and near Point Vicente SMCA (No-Take) and Abalone Cove SMCA (right).

Glossary

The Glossary defines the acronyms used in any or all the Compliance Forum Reports.

- **ADA:** American Disabilities Act
- **ASBS:** Area of Special Biological Significance.
- **BIPOC:** Black, Indigenous, and people of color.
- **CalTIP:** Californian's Turn in Poachers and Polluters.
- **CDFW:** California Department of Fish and Wildlife.
- **CHP:** California Highway Patrol.
- **COVID-19:** Coronavirus Disease 2019 (also referred to as COVID and the pandemic).
- **CPFV:** Commercial Passenger Fishing Vessel (also referred to as a party boat).
- **DA:** District Attorney.
- **FGC:** Fish and Game Code.
- **GPS:** Global Positioning System.
- **HOA:** Homeowner's Association
- **M2:** Marine Monitor (M2) Radar System.
- **MPA:** Marine Protected Area.
- **MSLT:** MPA Statewide Leadership Team.
- **NMS:** National Marine Sanctuary.
- **NOAA:** National Oceanographic and Atmospheric Administration
- **NPS:** National Park Service.
- **OLE:** Office of Law Enforcement (within NOAA).
- **QR:** Quick Response [code].
- **SCP:** Scientific Collecting Permit.
- **SCUBA:** Self-contained Underwater Breathing Apparatus.
- **SMCA:** State Marine Conservation Area.
- **SMR:** State Marine Reserve.
- **SMRMA:** State Marine Recreational Management Area.
- **SUP:** Stand Up Paddle Board.
- **ROV:** Remotely Operated Vehicle.
- **UC:** University of California.
- **USFWS:** United States Fish and Wildlife Service.
- **USCG:** United States Coast Guard.



**OCEAN
PROTECTION
COUNCIL**

These materials and MPA Community Compliance Forums made possible by a grant from the California Ocean Protection Council's Once-Through Cooling (OTC) Interim Mitigation Fund.

**Learn more about the MPA Collaborative Network at
www.mpacollaborative.org**

Join your local MPA Collaborative to get involved in bottom-up resource management.

**Visit the California MPA website at
www.wildlife.ca.gov/MPAs**