



CITY OF **50** RANCHO PALOS VERDES
1973-2023

CITY MANAGER'S WEEKLY ADMINISTRATIVE REPORT

MARCH 15, 2023 (REPORT NO. 23-11)

TABLE OF CONTENTS

CITY MANAGER - PAGE 4

- City Council Meeting Agenda Now Available
- City Council Goals Workshop Tonight, March 15
- Draft Environmental Impact Report for Portuguese Bend Landslide Remediation Project Available for Review
- March 18 50th Anniversary Hike Postponed
- SBCCOG 2023 General Assembly March 23
- COVID-19 Updates
 - L.A. County Aligns with State on New COVID-19 Guidelines; Local Orders Will Address Enhanced Protections in High-Risk Settings
 - COVID-19 Tenant Protections Continue Through March 31: What Renters Need to Know
- Have Questions About Annual Brush Clearance Requirements?
- Emergency Preparedness
 - Extreme Weather Condition Tips - Take Steps Now To Be Prepared
 - Emergency Preparedness Tips
 - Know the Difference: What Evacuation Warnings and Orders Mean
 - Rain Safety Tips
- Public Safety
 - Weekly Crime Report Summaries
 - Apply Today for a Security Camera Grant!
 - Interested in Volunteering with the Sheriff's Department?
 - U.S. Coast Guard Helicopter Training at Point Vicente Lighthouse on March 20 and 22

FINANCE - PAGE 19

- Finance Advisory Committee Meeting (Cancelled)
- Monthly Financial Report – January 2023
- Consumer Price Index, U.S. — February 2023
- Consumer Price Index, Los Angeles area — February 2023

PUBLIC WORKS - PAGE 23

- Public Works Projects
 - Ladera Linda Community Park Project Update
 - Repairs in the Landslide Area
 - Next Paper Shredding Event, April 1
 - Prepare for the Citywide Brush Clearing
 - Household Hazardous Waste/Electronic Waste Roundup
- Virtual Meetings
 - Infrastructure Management Advisory Committee (IMAC) Meeting
 - Traffic Safety Committee (TSC) Hybrid Meeting
- Maintenance Activities
 - Park Maintenance
 - Street Landscaping
 - Roadway Pothole and Road Repair
 - Graffiti Removal
 - Emergency Issues

COMMUNITY DEVELOPMENT - PAGE 30

- California's Housing Future 2040: The Next Regional Housing Needs Allocation (RHNA)
- Upcoming Eco Gardener Virtual Webinar
- Citywide Real Estate Sign Regulations
- Building Permits Available Through eTRAKIT Online Portal

RECREATION AND PARKS - PAGE 33

- Highlights
 - Don't Worry, Be Hoppy!
 - Update: Point Vicente Interpretive Center Partially Reopen
 - Whale of a Day
 - Whale of a Day Bookmark Contest: Deadline Fast Approaching!
 - Animal Adoption Event at Civic Center
 - RPV Volunteer Program
 - REACH Rolls On!
 - REACH Appreciates the Arts
- Parks and Facilities
 - Parks Weekend Attendance Report
- Preserve Updates
 - Preserve and Beach Weekend Activity
 - Abalone Cove Reserve

CORRESPONDENCE AND INFORMATION RECEIVED (See Attachments)

- Calendars – Page 41
- Tentative Agendas – Page 44
- Channels 33 and 38 Schedule – Page 47
- Channels 35 and 39 Schedule – Page 48
- Crime Reports – Page 49
- PRA Log (Open Requests) – Page 52

CITY MANAGER'S OFFICE

City Council Meeting Agenda Now Available

The agenda for the March 21 City Council meeting is now available at rpvca.gov/agendas.

The meeting will include a public hearing to seek feedback on the Draft Environmental Impact Report (EIR) for the proposed Portuguese Bend Landslide Remediation Project, which aims to significantly slow land movement that has damaged homes, utilities, and infrastructure for nearly seven decades.



The hearing will include a presentation of the findings of the Draft EIR, an informational report that studies how a proposed major construction project could affect the environment and what can be done to mitigate those effects. EIRs are meant to inform decision-makers and the public of any potential impacts before a project can be built. The Draft EIR is available at rpvca.gov/landslide.

The meeting will take place at 7 p.m. in McTaggart Hall at Hesse Park and via Zoom. Watch live at rpvca.gov or on Cox 33/FiOS 38.

To participate in public comment virtually, complete a form at rpvca.gov/participate.

Email your comments on agenda items to cc@rpvca.gov.

If you are a person with a disability and need an accommodation to participate in programs, services, activities, and meetings, contact the City's ADA Coordinator/Risk Manager at 310-683-3157, adarequests@rpvca.gov, 30940 Hawthorne Blvd., Rancho Palos Verdes, CA 90275, at least 48 hours in advance to request an auxiliary aid or accommodation.

City Council Goals Workshop Tonight, March 15

Where do you want to see Rancho Palos Verdes head in 2023? Share your vision with the City Council and bring important community issues into focus at the City Council Goals Workshop on March 15. The hybrid in-person/virtual workshop will take place from 6-9 p.m. in McTaggart Hall at Hesse Park and via Zoom.

Register for a Zoom link at rpvca.gov/participate. A meeting agenda will be posted at rpvca.gov/agendas.

If you have questions about this workshop, please contact Deputy City Manager Karina Bañales at kbanales@rpvca.gov.



Draft Environmental Impact Report for Portuguese Bend Landslide Remediation Project Available for Review

On February 9, the City released a Draft Environmental Impact Report (DEIR) for the proposed Portuguese Bend Landslide Remediation Project. The project aims to slow a continuously moving landslide that has significantly damaged homes, utilities, and infrastructure over the past seven decades.

More than 900 residents in the vicinity of the project received a letter, the Notice of Public Hearing and Notice of Availability of Draft Environmental Impact Report for the Portuguese Bend Landslide Remediation Project. The letter included the project background and where interested persons can view the DEIR.



An electronic version can be viewed at the following link:

<https://rpvca.gov/1031/Portuguese-Bend-Landslide>.

Hard copies can be viewed at the following locations:

- City of Rancho Palos Verdes, Public Works Department, 30940 Hawthorne Boulevard, Rancho Palos Verdes, CA 90275
- Palos Verdes Library District – Miraleste Library, 29089 Palos Verdes Drive East, Rancho Palos Verdes, CA 90275
- Palos Verdes Library District – Peninsula Center Library, 701 Silver Spur Road, Rolling Hills Estates, CA 90274

Written comments on the DEIR may be submitted to the Public Works Department at Rancho Palos Verdes City Hall (30940 Hawthorne Boulevard, Rancho Palos Verdes, CA 90275) or via email to publicworks@rpvca.gov by **4:30 p.m. on April 14, 2023**.

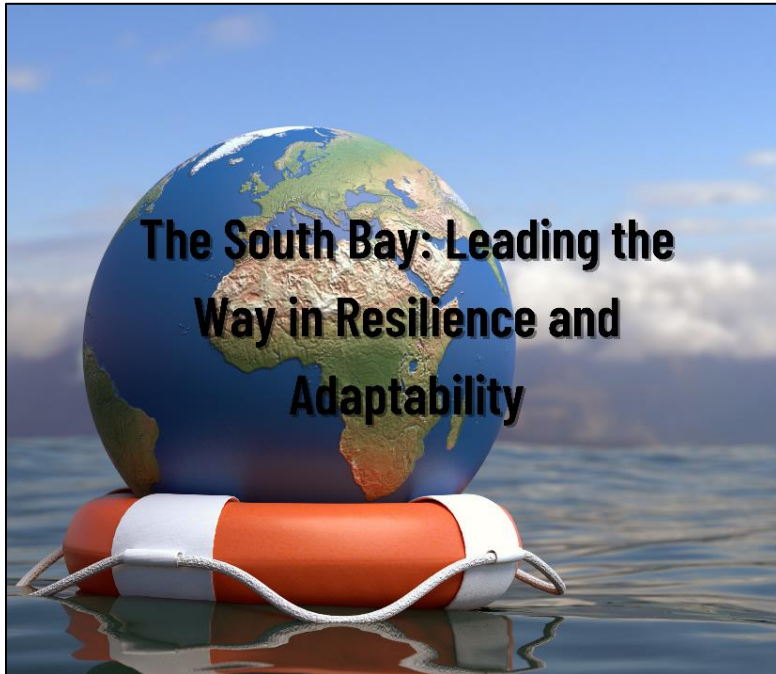
In addition to written comments, on **March 21, 2023 at 7:00 p.m.**, the City Council will conduct a public hearing to provide information about the DEIR and solicit public input regarding issues and concerns with the document. The City encourages all interested individuals and organizations to attend the meeting. The meeting will take place in McTaggart Hall at Fred Hesse Jr. Community Park.

For more information on the Portuguese Bend Landslide and the Portuguese Bend Landslide Mitigation Project, visit <http://www.rpvca.gov/1031/Portuguese-Bend-Landslide>


March 18 50th Anniversary Hike Postponed

The 50th Anniversary Celebration hike and reception event at Del Cerro Park on March 18 has been postponed, as the Preserve may remain closed following this week's rainfall for public safety and to prevent further trail erosion damage. A rescheduled date is to be announced. Please check rpv50.com for updates.





The South Bay: Leading the Way in Resilience and Adaptability



**SOUTH BAY CITIES
COUNCIL OF GOVERNMENTS**

Presents
The 23rd General Assembly
Thursday, March 23, 2023
9 a.m. to 3 p.m.
Check in begins at 8:30 a.m; continental breakfast and lunch will be served.
**At the Juanita Millender-McDonald
Community Center in Carson**
801 E. Carson St., Carson, CA 90745

SBCCOG 2023 General Assembly March 23

The South Bay Cities Council of Governments (SBCCOG) will host its 23rd Annual General Assembly on March 23 from 9 a.m. -3 p.m. The General Assembly allows the region's thought leaders to gather, share ideas, and discuss important issues. The theme for the SBCCOG's 2023 General Assembly is "The South Bay: Leading the Way in Resilience & Adaptability." The conference will feature panel discussions and interactive exhibits, with speakers including Gene Rodrigues, Assistant Secretary of Energy for the U.S. Department of Energy Office of Electricity, and RPV Mayor Pro Tem and SBCCOG Chair John Cruikshank. This year's program will explore how the South Bay is adapting to the potential impacts of climate change to create a more resilient future. This free event is designed with elected officials, city staff, city commissioners, residents, and local businesses in mind and is made possible by the SBCCOG's generous sponsors. Please visit the SBCCOG's website for registration and event details at the following link: <https://southbaycities.org/event/23rd-annual-general-assembly/>



L.A. County Aligns with State on New COVID-19 Guidelines; Local Orders Will Address Enhanced Protections in High-Risk Settings

The L.A. County Department of Public Health has aligned with the following new guidance issued by the California Department of Public Health (CDPH):

- **Masking** – With current COVID cases and hospitalization levels, masking for the general public is based on individual preference. Vulnerable populations, including people who are elderly, immunocompromised, or have underlying health conditions, and those who have contact with them should consider masking in indoor public spaces.
- **Vaccination** – On April 3, CDPH will rescind COVID-19 vaccination orders for workers at correctional, detention, and adult care facilities.
- **Isolation** – Individuals who have tested positive for COVID-19 should continue to isolate (stay home) for 5 days and may leave isolation after day 5, as long as they have been fever-free for 24 hours (without the use of fever-reducing medicines) *and* they either have no symptoms, or their symptoms are mild and improving. A negative COVID-19 test is no longer required to leave isolation between days 6-10. *The Department of Public Health strongly recommends that people test negative prior to leaving isolation between days 6-10.* Infected people should wear a well-fitting mask around others for a total of 10 days. People may now discontinue wearing a mask around others between days 6-10 if they have two sequential negative tests taken at least one day apart.
- **Quarantine** – It is strongly recommended but not required that a person who is in close contact with a person with a confirmed case of COVID-19 wears a well-fitting mask around others for a total of 10 days, especially in indoor settings or when near those who are at high risk for severe illness. It is recommended that close contact tests as soon as possible to determine infection status and then, if negative, test again within 3-5 days after the last known exposure.

The Department of Public Health will continue to assess the impact of COVID-19 and to protect the county's most vulnerable residents by continuing to require robust COVID-19 case and cluster reporting by worksites, schools, and healthcare facilities to the Department of Public Health. The ongoing case and cluster reporting requirements are intended to help Public Health officials quickly identify sectors where there may be increased COVID-19 transmissions and take action to prevent unmitigated spread.

Public Health will also continue enhanced protective measures in healthcare settings. Specifically, Public Health will continue to require that healthcare workers continue to be vaccinated and boosted and wear a mask during patient care or working in patient care areas. This requirement will be re-assessed by the end of September 2023.

Public Health will continue to work to provide free vaccinations, boosters, testing and treatment, regardless of immigration or insurance status.

Even with less stringent COVID-19 guidelines going into effect, L.A. County residents are strongly recommended to stay up to date on vaccines and boosters, test before gatherings and get treatment and stay home when sick.

COVID-19 Tenant Protections Continue Through March 31: What Renters Need to Know

COVID-19 emergency tenant protections for L.A. County renters are set to end on March 31, 2023. The L.A. County Department of Consumer and Business Affairs has put together a guide to help you understand what protections expire at the end of March and what protections will continue beginning April 1. Read the guide at: bit.ly/3RUjpSK



Have Questions About Annual Brush Clearance Requirements?

You may have recently received a Defensible Space Annual Notice (formerly known as the Brush Clearance Annual Notice) from the Los Angeles County Fire Department (LACoFD). Some homeowners on the Palos Verdes Peninsula are receiving this notice for the first time due to updated mapping software. In collaboration with the LACoFD, the four cities of the Peninsula have prepared a list of frequently asked questions (FAQs) with additional information and clarification regarding the current requirements for annual brush clearance (see attached FAQs).



[Annual Brush Clearance FAQs \(PDF\)](#)

If you have additional questions, please contact LACoFD's Brush Clearance Unit at 626-969-2375 or BrushGroup@Fire.LACounty.gov.



Extreme Weather Condition Tips - Take Steps Now To Be Prepared

As winter weather continues to affect our communities, we can take steps to prepare. Here are things to have and do.

As cold temps continue this week, remember to:

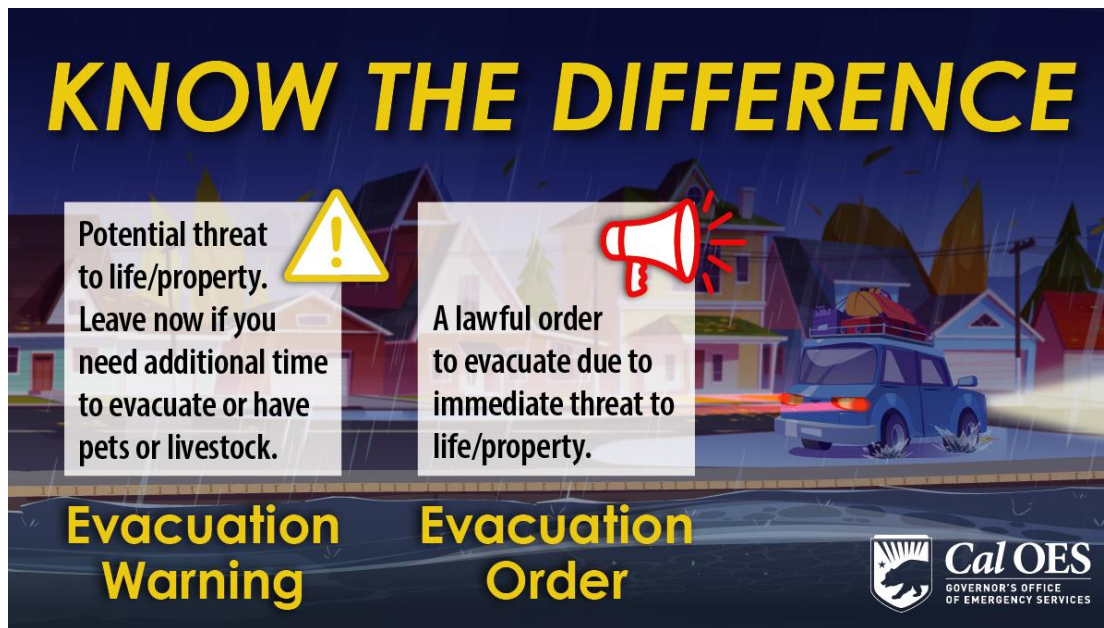
- ❄ Gather food and water as well as personal protective equipment.
- ❄ Have cash, fuel, and charge your phone.
- ❄ Gather a battery-operated radio and extra batteries.
- ❄ Limit the time you spend outdoors.
- ❄ Dress in warm layers of clothing, including gloves, hats, and socks.
- ❄ Prepare a [Family Emergency Communications plan](#)
- ❄ Sign up for Alert SouthBay emergency notifications by texting “alertsb” to 888-777 or visiting alertsouthbay.com
- ❄ For Additional Tips, Visit: ready.gov/winter-weather



STAY INFORMED AND STAY READY, RPV!

DON'T UNDERESTIMATE THE POWER OF WATER!





Know the Difference: What Evacuation Warnings and Orders Mean

Residents are reminded of the importance of being prepared as a significant series of storms continue to impact portions of the state. In addition, extreme weather conditions, such as heavy precipitation and snowfall, contribute to hazardous conditions. In order to keep people safe, law enforcement frequently issues evacuation warnings or orders prior to major emergencies, such as severe weather, so it is crucial that all residents understand what it means and how to respond to law enforcement guidance.

Evacuation Warning vs. Evacuation Order

- An EVACUATION WARNING means there's an impending danger to your life or property. If a warning is given, assume an evacuation order will follow. Start gathering important items for your family and pets. Any individuals who need

extra time to evacuate, or anyone with large animals, should pack-up and leave when a warning is issued.

- An EVACUATION ORDER means there's an immediate threat to your life, and you need to leave right now! It's critical to follow all directions from law enforcement to ensure you and your family evacuate safely.

When to Evacuate

- Leave as soon as evacuation is recommended to avoid being caught flood waters, or road congestion. In some emergencies, officials may not have time to knock on every door. If you are advised to leave, don't hesitate!
- Officials will determine the evacuation areas and escape routes based on the danger's location, behavior, terrain, etc.
- You will be advised of potential evacuations as early as possible. Take the initiative to stay informed and aware.
- Do not return to your home until officials determine it's safe. Notifications will be given as soon as possible and will take into consideration safety and accessibility.

Pack a Go-Bag

When a disaster hits, you might not have time to gather the necessary supplies. Be sure to Pack a [Go Bag](#) , so it's ready to grab in case of an emergency. Think about the items you'd take if you only had two minutes to leave your home:

- Important Documents
- Cash
- Medicine & important medical information
- Phone charger & backup battery

Pet Preparedness Kit

Plan ahead for your pets and know where you will take or leave them during an emergency. During an emergency, local animal rescue organizations work with law enforcement and fire departments to rescue as many animals as they can. You should also have a go-bag packed for your animals:

- Pet carrier for each pet
- Two-week supply of food and water
- Pet first aid kit
- Identification tags

- Vaccination information
- Medications and dosing instructions
- Plastic bags for waste disposal
- Leashes/collars/harnesses

Additional Resources:

- [Ready.gov/plan](https://www.ready.gov/plan)
- [LA County Emergency Survival Guide](#)
- [How to Prepare for Emergencies- American Red Cross](#)
- [Ready LA County: Preparing an Emergency Kit \(Video\)](#)



Rain Safety Tips

The rainy season is here. During storms, there is increased potential for flash floods, falling rocks, and mud and debris flows. Everyone should be aware of the weather forecasts and associated impacts where they live, work, and play and take steps to be prepared and stay safe. Use the resources below to prepare for and stay safe during rainy weather.

Safety Tips

- Heed all instructions from emergency responders and emergency alert notifications.

- Drive cautiously and slow down – Many roadways will be wet and slippery.
- Do not attempt to cross flooded areas, and never enter moving water.
- As little as 6 inches of water can knock over and carry away an adult, and 18-24 inches of water can carry away most large SUVs, vans, and trucks. “Turn around, don’t drown!”

10 Ways to Prepare

1. **CREATE AN EMERGENCY KIT TODAY!** If you’ve already got an emergency kit prepared, review it regularly.
2. **CONNECT TODAY TO THE OFFICIAL EMERGENCY ALERTS** from the City of Rancho Palos Verdes. Sign up today for Alert SouthBay emergency notifications by texting “alertsby” to 888-777 or visiting [alertsouthbay.com](https://www.alertsouthbay.com).
3. **MONITOR SOCIAL MEDIA AND LOCAL NEWS** media for relevant and important updates. Stay connected and get updates from the City by following RPV on [Nextdoor](#), [Facebook](#), [Twitter](#), and [Instagram](#)
4. **Check your car.** Make sure your car’s tires have good tread and that your windshield wipers work well. Your headlights should always be on in the rain!
5. **CHECK YOUR HOUSE.** Clear your outdoor drains and gutters of any leaves, dirt, or debris. Secure trash, recycling bins, and any other items that have the potential of blowing or floating away.
6. **GOT FLOOD INSURANCE?** Consider purchasing flood insurance. Keep in mind, most flood policies have a 30-day waiting period.
7. **USE SANDBAGS.** Sandbags can be utilized to help protect your home and property before a storm.
8. **DON’T RISK YOUR LIFE.** During significant storm events, avoid waterways, flood control channels, and the ocean, which can all rapidly swell and become extremely dangerous. NO PLACE outside is safe when lightning is in the area!
9. **PREVENT STORMWATER POLLUTION.** Rain washes everything into storm drains that lead to our rivers and ocean. Secure household hazardous waste with tight-fitting lids and store these items in covered areas.

10. **CAPTURE RAINWATER.** Prepare your landscaped areas to capture and retain more water by using compost. Collect rain that falls on your roof by installing rain barrels.

Major Storm Resources

- [Current Weather Conditions & Forecast](#)
- [LA County Public Works Road Closures](#)
- [LA County Public Health Beach Water Quality Advisories](#)

Additional Resources

- [Download the Emergency Survival Guide](#)
- [Flood Hazard Areas Interactive Map](#)
- [CalOES MyHazards Mapping Tool](#)
- [FEMA Flood Map Information](#)





Weekly Crime Report Summaries

The Lomita Sheriff's Station provides weekly crime report summaries for the City of Rancho Palos Verdes. The summaries are updated on the [City's website](#), distributed via [Nextdoor](#) and the Public Safety Alerts [listserv](#), and included in the Weekly Administrative Report (see attachments).

For assistance accessing the Weekly Crime Reports, or navigating the mapping feature on the City's website, email PublicSafety@rpvca.gov.

Apply Today for a Security Camera Grant!

The City is pleased to announce that the Public Safety Reimbursement Program is once again accepting applications! The program provides a partial reimbursement to individuals and neighborhoods for a public safety purchase such as a security camera.

Individuals are eligible to apply for a 50% reimbursement up to \$100, awarded based on a random draw, for external security cameras such as doorbell cameras. Neighborhoods are eligible to apply for a 50% reimbursement up to \$2,000, awarded based on a rubric, for neighborhood entrance/exit security cameras.



Full program terms and copies of the program packets are available on the [City's website](#). Applications are due by April 10.

Interested in Volunteering with the Sheriff's Department?

The Los Angeles County Sheriff's Department has a volunteer program for members of the community who seek to maintain a high quality of life in the area they live in. Volunteers have an opportunity to learn about law enforcement and, with their community service, help improve law enforcement services.



In the Volunteers on Patrol (VOP) program, trained volunteers work in volunteer vehicles in a volunteer uniform, assisting in the field as additional eyes and ears in the community, and reporting suspicious activities to the Sheriff's Station.

U.S. Coast Guard Helicopter Training at Point Vicente Lighthouse on March 20 and 22

The U.S. Coast Guard is scheduled to conduct training on March 20 and 22 at the Point Vicente Lighthouse. The training exercises will consist of one helicopter conducting simulated cliff rescues on Coast Guard property from approximately 2-3 p.m. on March 20 and 9:30-10:30 a.m. on March 22.



Attachments:

Los Angeles Times article on Portuguese Bend Landslide – Page 53
Annual Brush Clearance FAQs – Page 68

FINANCE DEPARTMENT

Finance Advisory Committee Meeting (Cancelled)

The Finance Advisory Committee (FAC) regular meeting rescheduled to March 23 has been cancelled. The next FAC regular meeting will be held on April 13 at 7 p.m.

Monthly Financial Report – January 2023

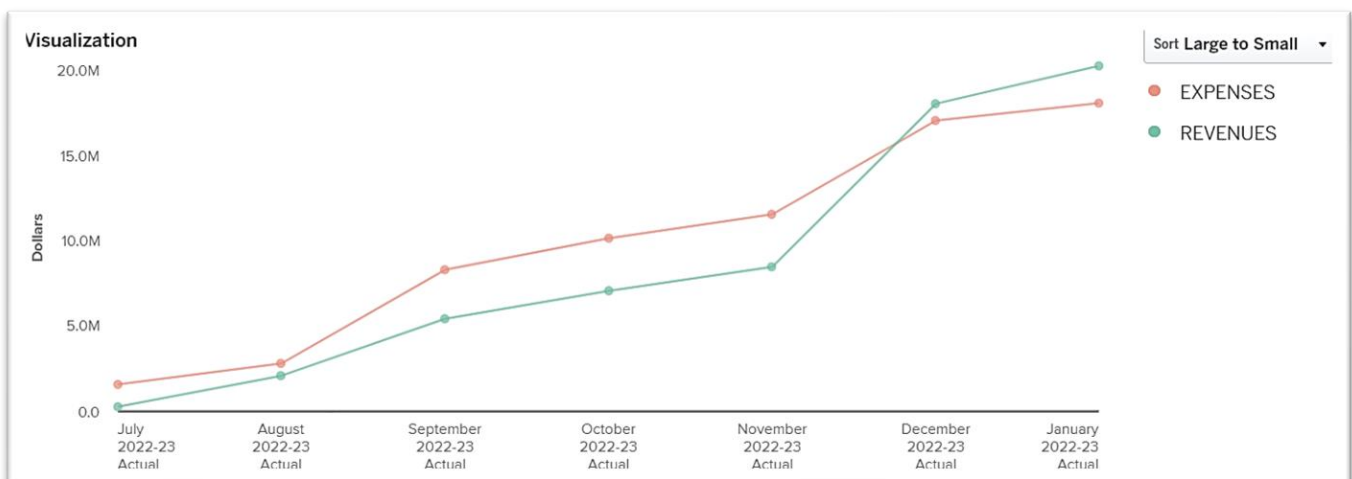
The Monthly Financial Report for January is now available on the City's website. This report provides an overview of City revenues and expenditures through the reported period and includes access to the OpenGov financial data portal. The latest report is available here: [Monthly Financial Report](#).

All previous monthly reports can be accessed on the City's website at the following link: <https://www.rpvca.gov/1066/Monthly-Financial-Reports>

General Fund Overview

Through the end of January, the City's General Fund has a total of \$20 million in revenues and \$18 million in expenditures. General Fund revenues exceeded expenditures by just over \$2 million, or 12%, at this point in the fiscal year. Compared annually, revenues have grown by approximately \$2.4 million, or 13%, and expenditures have increased by roughly \$3 million, or 21%.

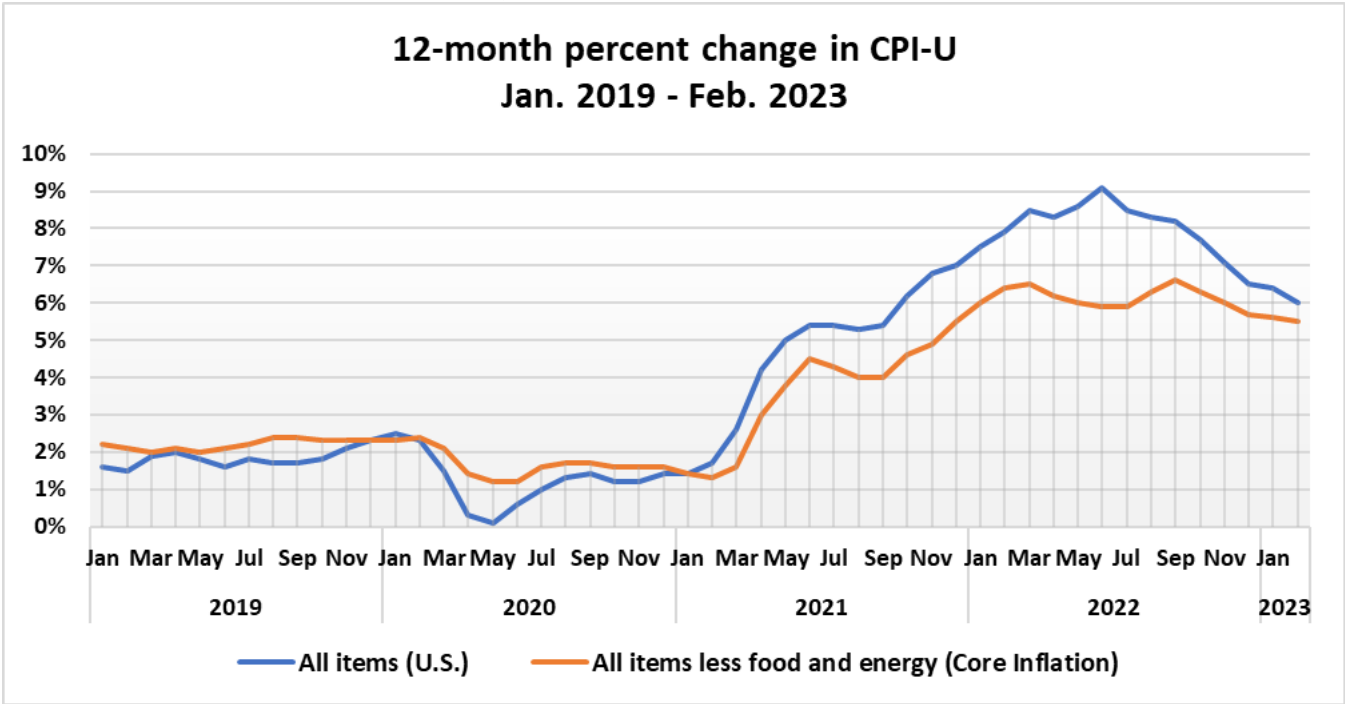
FY 2022-23 General Fund (Cumulative Amounts)



Consumer Price Index, U.S. — February 2023

Nationally, the Consumer Price Index for All Urban Consumers (CPI-U) rose 0.4 percent in February on a seasonally adjusted basis after increasing 0.5 percent in January. Over the last 12 months, the all items index increased 6.0 percent before seasonal adjustment. The index for all items less food and energy, core inflation, rose 0.5 percent in February after rising 0.4 percent in the prior month. This resulted in an increase of 5.5 percent over the last 12 months.

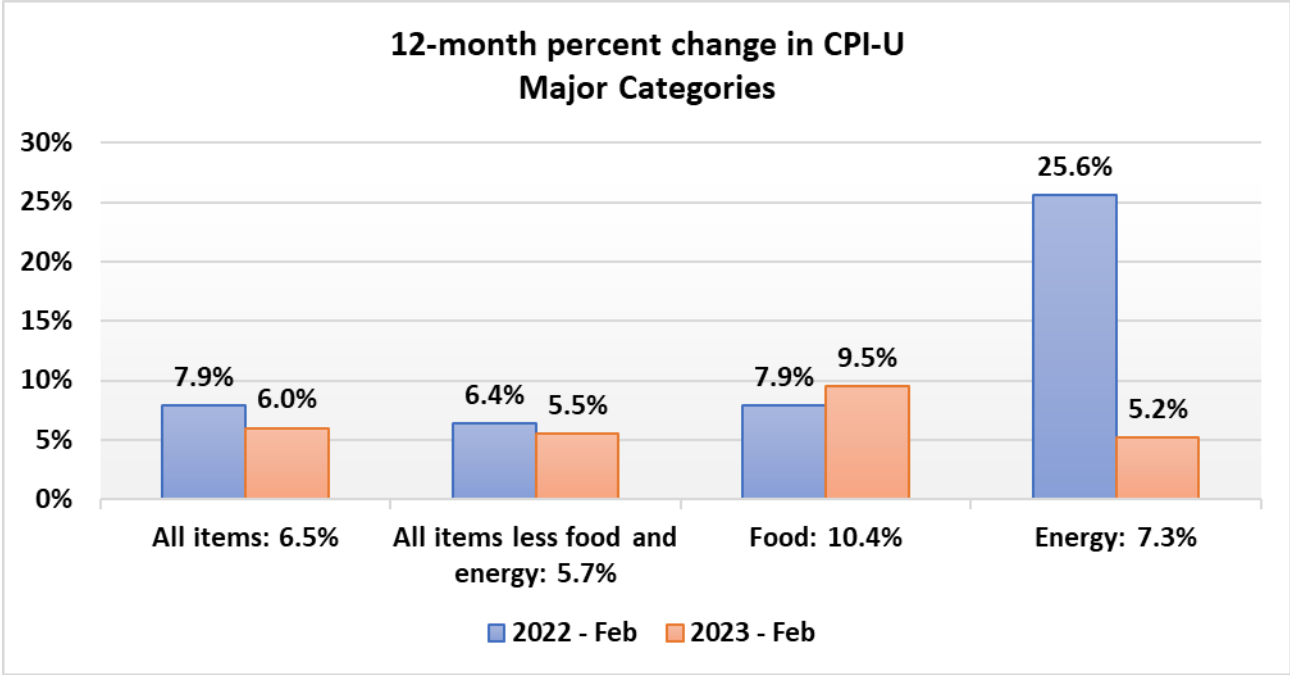
Chart 1. 12-month percent change in CPI-U – U.S.



Food and Energy

The food index increased 9.5 percent for the 12 months ending February. On a monthly basis, the food index increased by 0.4 percent. This increase was driven by the food at home index rising 0.3 percent over the month. Additionally, the energy index increased by 5.2 percent over the last year. Compared to January, the energy index decreased by 0.6 percent in February as the natural gas and fuel oil indexes both declined. Chart 2 on the following page illustrates the annual percent change for major categories in February.

Chart 2. Year-over-Year percent change in Major Categories – U.S.



Consumer Price Index, Los Angeles area — February 2023

Prices in the Los Angeles area, as measured by the CPI-U, declined 0.3 percent in February. Over the last 12 months, the CPI-U advanced 5.1 percent. Of the major categories, food prices increased by 7.8 percent annually, while energy prices rose by 6.4 percent compared to a year ago. The index for all items less food and energy, core inflation, rose 4.5 percent over the year.

Food and Energy

Food prices increased by 0.7 percent for the month of February. Prices for food at home increased 0.7 percent over January, with higher prices in five of the six grocery categories. Prices for food away from home also increased by 0.6 percent for the same period.

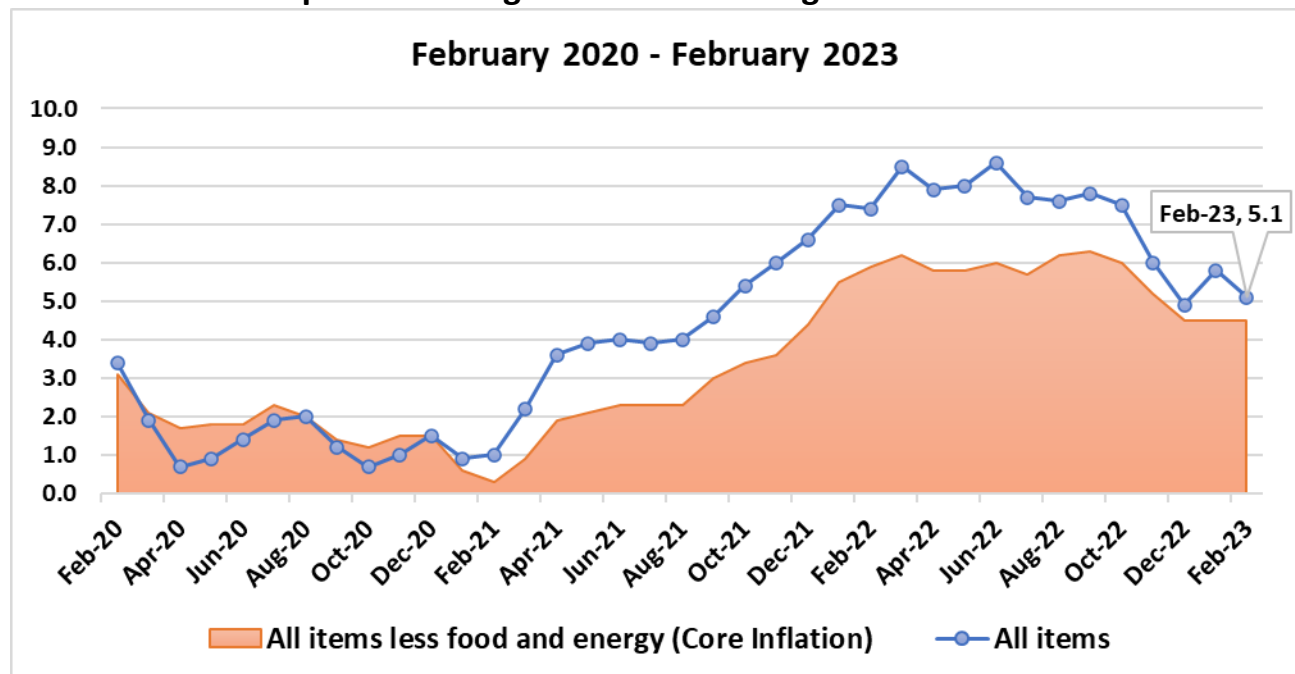
The energy index fell 9.8 percent over the month of February. This decline was mainly due to lower prices for natural gas services. Prices for gasoline, however, increased by 4.8 percent for the same period. Additionally, the price of gasoline fell 0.9 percent when compared to February 2022.

All items less food and energy

The index for all items less food and energy advanced by 0.4 percent in February. Higher prices for household furnishings and apparel were partially offset by lower prices for used cars and trucks as well as medical care.

Over the past 12 months, the index for all items less food and energy increased by 4.5 percent. A major factor contributing to the year-over-year increase was the price of shelter, which includes the cost of rent. The annual increase in core inflation was partly offset by price decreases in used cars and trucks. Chart 3 captures the trend in all items and core inflation from February 2020 to 2023.

Chart 3. 12-month percent change in CPI-U - Los Angeles Area



Source: Bureau of Labor Statistics

PUBLIC WORKS DEPARTMENT



Ladera Linda Community Park Project Update

Rain continues to impact various activities; however, this week, crews continued framing the building's exterior overhang, installing exterior sheathing, and roofing. On the interior, they continued the electrical rough-in, ceiling framing, and drywall installation.

Crews continued construction of the accessible ramp, the stepped terrace, and the utility enclosure. They also completed the storm drains on the upper tier and began installing irrigation lines for the low tier.

Next week, weather permitting, work will continue from last week. Site access through the lower gate is expected to be extended in response to recent and forecasted rain for this week. Adjacent neighbors have been notified

To see a current (refreshed once per minute) live view of the project site, you can visit the project page on the City website at: rpvca.gov/LaderaLinda

If you have any questions or would like to learn



more about this project, please contact James O'Neill at joneill@rpvca.gov



Repairs in the Landslide Area

Work on Palos Verdes Drive South (PVDS) to repair the asphalt roadway surface in the Landslide area was performed on Monday this week. This work addressed needed repairs between Narcissa Drive and Peppertree Drive and at the eastern end of PVDS. Repairs to PVDS near Wayfarers Chapel are tentatively scheduled to be performed on Friday, March 17, depending upon the weather.

Traffic control will be in place. Therefore, expect delays when driving in this area. Please slow down, drive cautiously, and obey all signs and instructions when driving through the work zones.



Next Paper Shredding Event, April 1

Mark your calendars! Our next paper/document shredding event will be on April 1 from 8-11 a.m. The event will be held at City Hall's overflow parking lot and will be free to all Rancho Palos Verdes residents. During the event, electronic waste will be collected for recycling, and mulch will be available to residents.



Prepare for the Citywide Brush Clearing



The spring season brush-clearing event begins on Saturday, April 8, and will continue for four consecutive Saturdays. Each week a different area of RPV is serviced. The goal of the event is to assist homeowners' dispose (free of charge) excess brush, shrubs, hedges, tree branches, and bushes to comply with the Los Angeles County Fire Department's fire safety guidelines. This is a great opportunity to help prevent local brush fires!

For more information, you may contact the City's waste collection contractor, EDCO, at 310-540-2977 or [https://rancho-palos-](https://rancho-palos-verdes.edcodisposal.com/events/rpv-brush-clearing-event/)

[verdes.edcodisposal.com/events/rpv-brush-clearing-event/](https://rancho-palos-verdes.edcodisposal.com/events/rpv-brush-clearing-event/)

Household Hazardous Waste/Electronic Waste Roundup

The City's annual Household Hazardous Waste/Electronic Waste Roundup Event is on Saturday, April 29, from 9:00 a.m. to 3:00 p.m. The event will take place at the Ken Dyda Civic Center (City Yard facility) located at 30940 Hawthorne Boulevard. There will be a temporary special event traffic control plan on Hawthorne Boulevard by the City Hall entrance and exit.



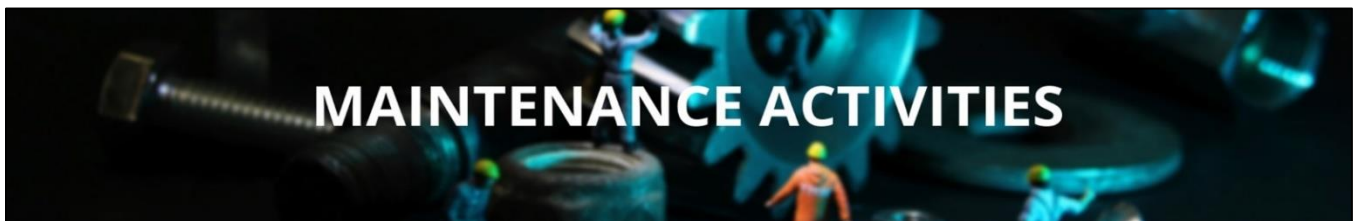
Infrastructure Management Advisory Committee (IMAC) Meeting

The next IMAC meeting will be conducted on March 20 at 6 p.m. The public is invited and encouraged to participate and provide input. The agenda will be available on the City's website at rpvca.gov/agendas by March 17 at 5:30 p.m.

Traffic Safety Committee (TSC) Hybrid Meeting

The next TSC meeting will be conducted on March 27 at 6 p.m. The public is invited and encouraged to participate and provide input. The agenda will be available on the City's website at rpvca.gov/agendas by March 24 at 4:30 p.m.

For public participation, click on this link: rpvca.gov/participate. For further questions, please contact Public Works at (310) 544-5252 or publicworks@rpvca.gov.

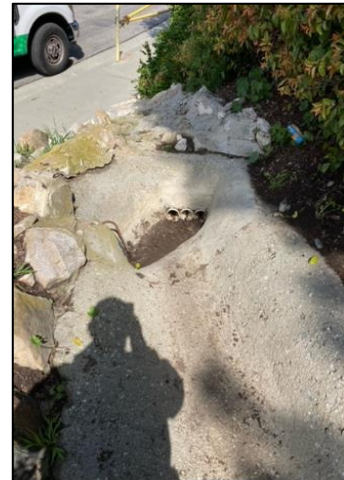


Maintenance Activities

In addition to regularly scheduled maintenance and repairs, Public Works performed the following:

PARK MAINTENANCE

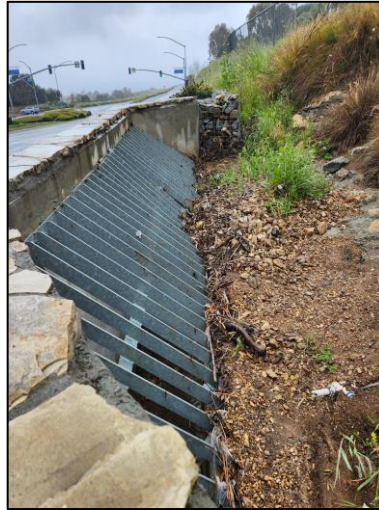
- Weekly landscape maintenance at all City parks.
- Daily cleaning and sanitizing of park facilities.
- Three irrigation repairs were completed this week at parks and facilities.
- Public Works continued the cleanup efforts and tree/branch removals from recent storms.



STREET LANDSCAPING

Street Median and Public Right of Way Landscape Maintenance:

- Weed removal, brush clearance, and debris removal will continue this week at the following medians and right-of-way locations:
 - Along Palos Verdes Drive South, as weather permits.
- In preparation for the rainstorm, crews cleaned storm drains, roadway water pass-throughs, and catch basins throughout the city to reduce the likelihood of flooding.



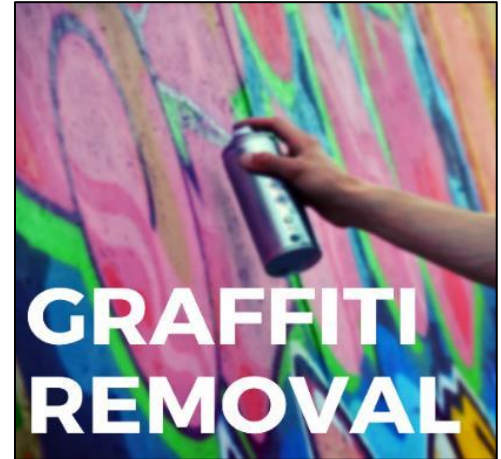
Public Right of Way/Roadway Repairs

- Crews repaired damage to street signs at various locations due to recent storms.



Graffiti Removal

- Five cases of graffiti were reported and removed this week.
- The RPV graffiti reporting app can be downloaded for Android and Apple devices under the name “**RPV Clean.**” Residents can help keep RPV looking great by using this app.



Emergency Response

- This week the Public Works Department responded to a down tree at Palos Verdes Drive West and Marguerite. Crews removed the tree from the right-of-way, and all lanes were opened.



COMMUNITY DEVELOPMENT DEPARTMENT

California's Housing Future 2040: The Next Regional Housing Needs Allocation (RHNA)

The State of California Housing and Community Development (HCD) Department is conducting a [public survey](#), alongside other engagement strategies, to receive input and improvement ideas regarding the 7th RHNA cycle for the planning period of 2030-2038. HCD plans on conducting the stakeholder engagement initiative through the Spring of 2023. The survey is organized by topic areas identified as priorities and should take approximately 10-15 minutes to complete. After the survey closes, HCD will summarize and analyze the survey responses. HCD will utilize the survey responses to inform HCD's recommendations for improving the RHNA process and methodology. For additional questions regarding the RHNA process, please contact the City's Planning Division at (310) 544-5228 or via email at Planning@rpvca.gov.



Upcoming Eco Gardener Virtual Webinar

The Water Replenishment District is hosting a series of free virtual classes to teach participants about water efficiency and sustainable gardening practices. Upcoming classes include sustainable landscape design on March 21, and edible gardening techniques on March 23. The Eco Gardener program aims to educate the public about sustainable landscape design, drought-tolerant plants, edible gardening, and irrigation basics. For additional class descriptions and registration details, please visit the [WRD website](#).



Citywide Real Estate Sign Regulations

In 2021, the City of Rancho Palos Verdes adopted a comprehensive update to its Sign Code. As part of the effort, regulations related to real estate signs were updated. As homes become available throughout the City, the Community Development Department encourages realtors to review the updated Sign Code in order to adhere to regulations when posting signage, whether on private or public property. Real estate sign provisions include, but are not limited to:



- Signs are prohibited from encroaching or hanging over public walkways or trails.
- Inverted “L” signs shall not exceed 6 feet, and all other yard signs shall not exceed 3 feet measured from the lowest grade.
- Signs on public property may only be placed in parkways. In the absence of parkways, signs may be placed on unimproved public property within the right-of-way, so long as they do not obstruct the passage of pedestrians or vehicles and do not interfere with traffic visibility.
- All signs shall be a minimum of 2 feet from vehicular travel lanes.
- No flags, balloons, pennants, or any other attachments are permitted.
- Signage on public property is permitted on weekdays starting at 11:00 AM and on weekends starting at 9:00 AM, and all signs must be removed promptly by 6:00 PM daily.

A copy of the City’s Sign Code and additional resources are available on the City’s [website](#). For questions regarding real estate signs, please contact the Code Enforcement Division at (310) 544-5281 or via email at CodeEnforcement@rpvca.gov.

Building Permits Available Through eTRAKIT Online Portal

With eTRAKiT, a homeowner, developer, and contractor may apply and pay for a number of selected building permits online. Permits available

through this permit portal include, but are not limited to, electrical panel upgrades, water heater replacements, solar panel installations, and reroofing improvements. The permit portal also provides opportunities to schedule an inspection and review inspection results. The permit portal is available on the City's website at <https://www.rpvca.gov/1380/eTrakit---Online-Permitting-Portal>.



RECREATION AND PARKS DEPARTMENT



Don't Worry, Be Hoppy!

The annual egg hunt extravaganza is back on April 8 at the Ken Dyda Civic Center from 9:30 a.m. to 11:30 p.m. With inflatables, a petting zoo, bunny photo ops, and so much more, this year's event will truly be one to dye for.

EGG HUNT!
Eggstravaganza!

2023
50
FAYETTE PALMS VILLAGE
1973-2023

Saturday, April 8th
9:30am-11:30am
Ken Dyda Civic Center
30940 Hawthorne Blvd
Egg Hunt will begin 10:30am
Activities begins at 9:30am

RPV Residents: \$15
Non Residents: \$18
Ages 1-8

- An appearance by the Big Bunny!
- LOADS of prizes! (You won't leave empty-handed!)
- Lots of photo opportunities
- Don't forget to bring a basket and a camera!
- Inflatables for kids
- Petting Zoo
- (Pre-registration required)
- Ages 1-8 years old
- Register soon! This event fills up quick!

If you are a person with a disability and need an accommodation to participate in programs, services, activities, and meetings, contact the City's ADA Coordinator/Risk Manager at 310-683-3157, or adarequests@rpvca.gov, at least 48 hours in advance to request an auxiliary aid or accommodation

Register at rpvca.gov/parks

Update: Point Vicente Interpretive Center Partially Reopen

The Point Vicente Interpretive Center Museum is now open from 10am-4pm daily. The main entrance, indoor restrooms, lobby and exhibits, remain closed as repair work continues in those areas.

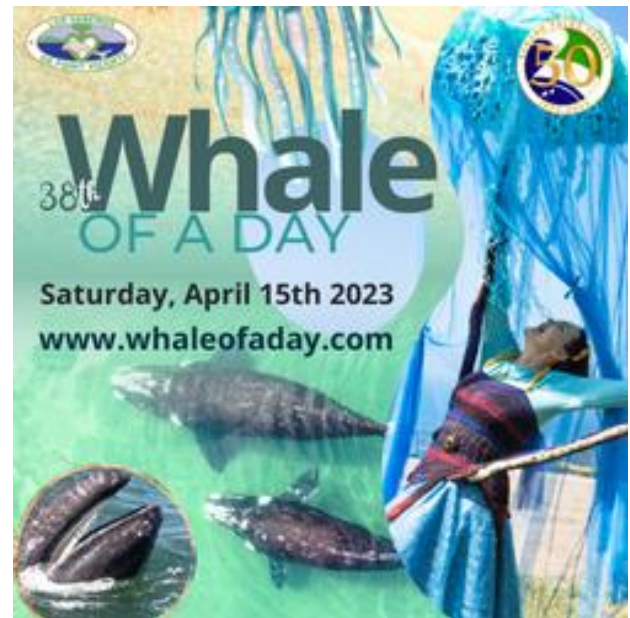
To access the museum, you can enter from the rear patio doors located by the American Cetacean Society whale watchers. Open exhibits include the Point Vicente Fresnel Lens, Navigation, Birds, Gray Whales, Whaling, Cultural History room, Tongva, and Sea Cave.

Whale of a Day

On Saturday, April 15, from 10 a.m. to 4 p.m. this one-of-a-kind community event returns. The City of RPV and Los Serenos de Point Vicente is preparing for the 38th annual Whale of a Day.

The Point Vicente Lighthouse grounds will be open again for tours. The event will have plenty of fun for everyone, including live music, children's activities, a silent auction, a raffle, beer and wine, food trucks, and more.

Check out www.whaleofaday.com for more information. Free parking and a shuttle are located at the Ken Dyda Civic Center, 30940 Hawthorne Blvd.

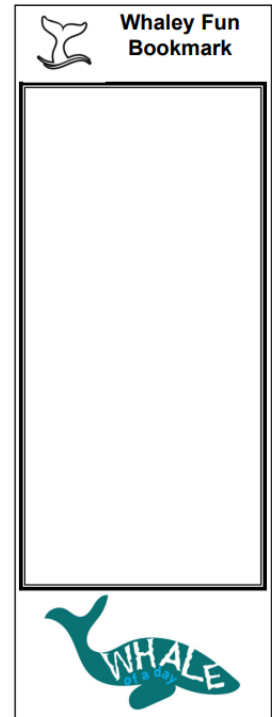


Whale of a Day Bookmark Contest: Deadline Fast Approaching!

The City of Rancho Palos Verdes invites kids grades TK-5 to use their creativity to create an ocean-themed bookmark in celebration of Whale of a Day! The bookmark template and information about the contest are available at www.whaleofday.com

Mail Entries to:
Point Vicente Interpretive Center
Attn: Bookmark Contest
31501 Palos Verdes Drive West
Rancho Palos Verdes, CA 90275

Entries must be postmarked by Friday, March 24, 2023 to be considered. Book this date and be ready to make your mark.



Animal Adoption Event at Civic Center

Pedro Pet Pals, a local dog and cat rescue center based in San Pedro will be available for adoptions on March 19 between noon and 3 p.m. at the Ken Dyda Civic Center. For more information or to visit their amazing cat lounge, contact info@pedropetpals.com



RPV Volunteer Program



Volunteers are needed to help prune and care for the Point Vicente Interpretive Center native plant garden on March 19 from 10:00 a.m. until noon. Anyone interested in volunteering for future city events is encouraged to view our web page at rpvca.gov/volunteer.

The first of several volunteer events to complete a native plant and bird-themed mural was held at Ryan Park on March 12. Eleven volunteers took turns tracing a projection of the mural artwork. Ryan Park Recreation Specialist Dana Torrey led the volunteer project and began the event with a short talk

on the plants and birds native to the Palos Verdes Peninsula and the creative process and stages that will be used to complete the mural. Once complete, the mural will be hung in the Hesse Park Activity Room.



REACH Rolls On!

The REACH program serves the social and recreational needs of youths and adults with developmental disabilities and is back at Hesse Park for in-person activities.

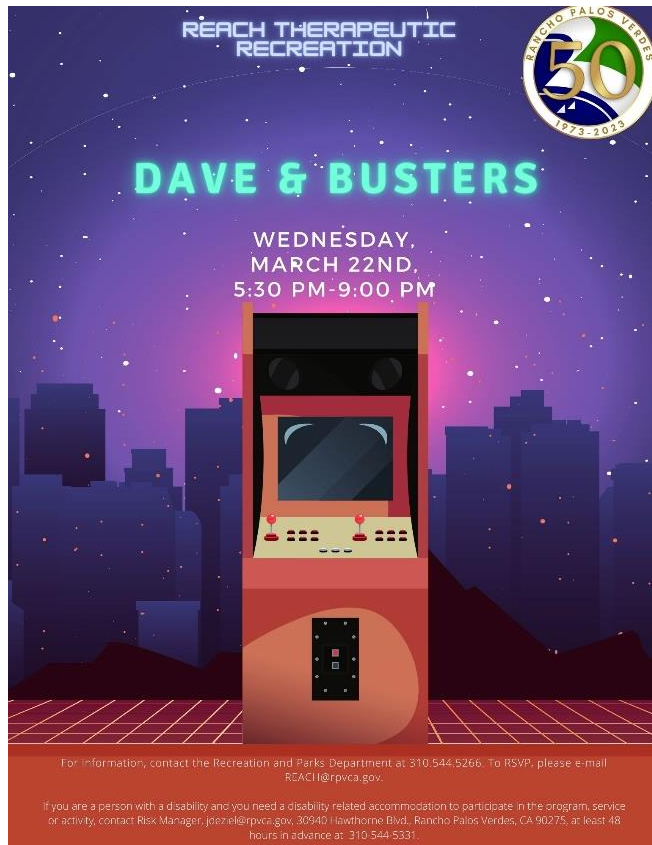
To RSVP for REACH activities or if you have questions, please email reach@rpvca.gov.

REACH Appreciates the Arts

On March 13, REACH spent that afternoon perusing the Kleefeld Art Museum at California State University Long Beach. Our participants enjoyed a guided tour and were encouraged to discuss art with their peers. Afterward, the museum offered several creative activities, such as working with clay, lightbox art, and photography.



Upcoming REACH events include a St. Patrick's Day celebration on March 15 and a trip to Dave & Busters on March 22!



Parks Weekend Attendance Report

Below is a public usage summary report for the past weekend.

HESSE PARK - walking paths, playground, and grass area

Total park attendance: **511**

RYAN PARK - walking paths, playground, basketball court, and grass area

Total park attendance: **337**

EASTVIEW PARK - walking paths, playground, dog park, and grass area

Total park attendance: **251**

LOWER POINT VICENTE PARK - walking paths and grass area

Total park attendance: **2,680**

Total Weekend Attendance: 3,779



Senior Park Ranger Fox and Recreation Supervisor Saldaña attended the Park Rangers Association of California Conference in Yosemite from March 6-9. Rangers met with agencies from California and Nevada to learn about park operations post- COVID-19, as well as participate in a variety of training and discussions covering various topics, including search and rescue and customer service.



The Palos Verdes Nature Preserve has been closed due to significant rain since March 10. The Preserve may remain closed for up to 72 hours after the last rain event to allow staff to assess trail conditions for public safety.



Preserve and Beach Weekend Activity March 11-12, 2023

Parking Citations Issued: 7

Public Contacts: 90

Violations observed: 36

Abalone Cove Reserve:

On March 7, Staff planted a native plant palette of local sagebrush, California sunflower bush, and buckwheat around the Tongva Memorial.



ADMINISTRATIVE REPORT

March 15, 2023

Page 40

On March 13, a vehicle driving on Palos Verdes Drive South lost control and swerved into the perimeter of the Abalone Cove parking lot. The driver did not need medical attention. The vehicle was removed by a tow truck.





March 2023

Sunday	Monday	Tuesday	Wednesday	Thursday	Friday	Saturday
			1	2	3	4
5	6	7 7:00 pm – City Council Meeting (Hybrid In-Person/Virtual Meeting) @ Hesse Park	8 5:30 pm – ACLAD Board Meeting (Virtual Meeting)	9 7:00 pm – Finance Advisory Committee (Hybrid In-Person/Virtual Meeting) @ City Hall Community Room CANCELLED	10	11
12	13	14 11:30 am – Mayor’s Lunch @ TBD (Mayor Ferraro) 7:00 pm – Planning Commission Meeting (Hybrid In-Person/Virtual Meeting) @ Hesse Park CANCELLED	15 1:30 pm – Sanitation District Meeting (Mayor Ferraro)	16 6:30 pm – Emergency Preparedness Committee (Hybrid In-Person/Virtual Meeting) @ City Hall Community Room	17	18
19	20 6:00 pm – IMAC Meeting (Hybrid In-Person/Virtual Meeting) @ City Hall Community Room	21 7:00 pm – City Council Meeting (Hybrid In-Person/Virtual Meeting) @ Hesse Park	22	23 6:00pm – Civic Center Advisory Committee (Hybrid In-Person/Virtual Meeting) @ City Hall Community Room 7:00 pm – Finance Advisory Committee (Hybrid In-Person/Virtual Meeting) @ City Hall Community Room CANCELLED	24 8:00 am – Mayor’s Breakfast @ Terranea Resort (Mayor Ferraro/Councilmember Bradley)	25
26	27 5:00 pm-Klondike Canyon Meeting @ Ladera Linda Community Center 6:00 pm – TSC Meeting (Hybrid In-Person/Virtual Meeting) @ City Hall Community Room	28 7:00 pm – Planning Commission Meeting (Hybrid In-Person/Virtual Meeting) @ Hesse Park	29	30	31	



April 2023

Sunday	Monday	Tuesday	Wednesday	Thursday	Friday	Saturday
						1
2	3	4 7:00 pm – City Council Meeting (Hybrid In-Person/Virtual Meeting) @ Hesse Park	5	6	7	8
9	10	11 7:00 pm – Planning Commission Meeting (Hybrid In-Person/Virtual Meeting) @ Hesse Park	12 5:30 pm – ACLAD Board Meeting (Virtual Meeting)	13 7:00 pm – Finance Advisory Committee (Hybrid In-Person/Virtual Meeting) @ City Hall Community Room	14	15
16	17 6:00 pm – IMAC Meeting (Hybrid In-Person/Virtual Meeting) @ City Hall Community Room	18 7:00 pm – City Council Meeting (Hybrid In-Person/Virtual Meeting) @ Hesse Park	19 12:00 pm – Mayor’s Lunch @ The Original Red Onion (Mayor Ferraro) 1:30 pm – Sanitation District Meeting (Mayor Ferraro)	20 6:30 pm – Emergency Preparedness Committee (Hybrid In-Person/Virtual Meeting) @ City Hall Community Room	21	22
23	24 5:00 pm-Klondike Canyon Meeting @ Ladera Linda Community Center 6:00 pm – TSC Meeting (Hybrid In-Person/Virtual Meeting) @ City Hall Community Room	25 7:00 pm – Planning Commission Meeting (Hybrid In-Person/Virtual Meeting) @ Hesse Park	26	27 6:00pm – Civic Center Advisory Committee (Hybrid In-Person/Virtual Meeting) @ City Hall Community Room	28 8:00 am—Mayor’s Breakfast @ Trump National Golf Club (Mayor Ferraro/ Councilmember Bradley)	29
30						



May 2023

Sunday	Monday	Tuesday	Wednesday	Thursday	Friday	Saturday
	1	2 7:00 pm – City Council Meeting (Hybrid In-Person/Virtual Meeting) @ Hesse Park	3	4	5	6
7	8	9 7:00 pm – Planning Commission Meeting (Hybrid In-Person/Virtual Meeting) @ Hesse Park	10 5:30 pm – ACLAD Board Meeting (Virtual Meeting)	11 7:00 pm – Finance Advisory Committee (Hybrid In-Person/Virtual Meeting) @ City Hall Community Room	12	13
14	15 6:00 pm – IMAC Meeting (Hybrid In-Person/Virtual Meeting) @ City Hall Community Room	16 7:00 pm – City Council Meeting (Hybrid In-Person/Virtual Meeting) @ Hesse Park	17 12:00 pm – Mayor’s Lunch @ The Original Red Onion (Mayor Ferraro) 1:30 pm – Sanitation District Meeting (Mayor Ferraro)	18 6:30 pm – Emergency Preparedness Committee (Hybrid In-Person/Virtual Meeting) @ City Hall Community Room	19	20
21	22 5:00 pm-Klondike Canyon Meeting @ Ladera Linda Community Center 6:00 pm – TSC Meeting (Hybrid In-Person/Virtual Meeting) @ City Hall Community Room	23 7:00 pm – Planning Commission Meeting (Hybrid In-Person/Virtual Meeting) @ Hesse Park	24	25 6:00pm – Civic Center Advisory Committee (Hybrid In-Person/Virtual Meeting) @ City Hall Community Room	26 8:00 am—Mayor’s Breakfast @ Terranea Resort (Mayor Ferraro/ MPT Cruikshank)	27
28	29 Memorial Day – City Hall Closed	30	31			

TENTATIVE AGENDAS

Agenda items listed below will be presented to the City Council for their consideration

DEPARTMENT	AGENDA SECTION	AGENDA TITLE	ESTIMATED TIME
April 4, 2023			
CLOSED SESSION - 6:00 PM			
	CLOSED SESSION	NO ITEMS SCHEDULED AT THIS TIME	
REGULAR MEETING - 7:00 PM			2:45
ADMIN	CONSENT CALENDAR	Minutes	1:00
ADMIN	CONSENT CALENDAR	Southern California Edison (SCE) License Agreement Extension for use of wireless facilities on Civic Center Monopole	
ADMIN	CONSENT CALENDAR	Consider PSA for Recruitment Services for vacant Public Works positions	
FINANCE	CONSENT CALENDAR	Treasury Reports (CC) (IA)	
FINANCE	CONSENT CALENDAR	Warrant Register	
PUBLIC WORKS	CONSENT CALENDAR	Consider Amendment No. 1 to PVIC construction agreement and to extend portable restroom rentals	
PUBLIC WORKS	CONSENT CALENDAR	Consider reaffirming emergency declaration for the sinkhole at Hawthorne Blvd	
PUBLIC WORKS	CONSENT CALENDAR	Pavement Asset Management Status Update	
PUBLIC WORKS	REGULAR BUSINESS	Consider construction bids for PVIC restroom improvements	0:15
ADMIN	REGULAR BUSINESS	Receive a presentation on Southern California Edison's response to recent power outages	0:30
ADMIN	REGULAR BUSINESS	Consider FY 23/24 City Council Goals Update report	0:30
April 6, 2023 (THURSDAY)			
BUDGET WORKSHOP (GENERAL FUND) 6:00 PM			
April 12, 2023 (WEDNESDAY)			
BUDGET WORKSHOP (CIP) 6:00 PM			
April 18, 2023			
CLOSED SESSION - 6:00 PM			
	CLOSED SESSION	NO ITEMS SCHEDULED AT THIS TIME	
REGULAR MEETING - 7:00 PM			4:00
ADMIN	CONSENT CALENDAR	Minutes	1:00
FINANCE	CONSENT CALENDAR	Warrant Register	
FINANCE	CONSENT CALENDAR	Receive and file the Employee Compensation Report	
FINANCE	CONSENT CALENDAR	Receive and file the Annual Comprehensive Financial Report	
PUBLIC WORKS	CONSENT CALENDAR	Consider reaffirming emergency declaration for the sinkhole at Hawthorne Blvd	
REC&PARKS	CONSENT CALENDAR	Receive and file a status report on the ParkMobile App at Del Cerro area	
CDD	PUBLIC HEARING	Annual Compliance Review of Trump National Golf Course and Open Space Maintenance	0:15
CDD	PUBLIC HEARING	Coastal Permit Revision- Parking Program (Case No. PLCP2022-0001)	0:30
ADMIN	REGULAR BUSINESS	Consider adopting a Homelessness Prevention Plan	0:30
ADMIN	REGULAR BUSINESS	Consider an Agreement and Plan between the City and PVPLC for use of UPV for a native plant farm	0:30
REC&PARKS	REGULAR BUSINESS	Status update on "Bubbles"	0:15
PUBLIC WORKS	REGULAR BUSINESS	Consider a grant program with PVPLC to match funds to promote acacia removal throughout City	0:30
May 2, 2023			
CLOSED SESSION - 6:00 PM			

TENTATIVE AGENDAS

Agenda items listed below will be presented to the City Council for their consideration

DEPARTMENT	AGENDA SECTION	AGENDA TITLE	ESTIMATED TIME
	CLOSED SESSION	NO ITEMS SCHEDULED AT THIS TIME	
REGULAR MEETING - 7:00 PM			4:00
ADMIN	CONSENT CALENDAR	Minutes	1:00
ADMIN	CONSENT CALENDAR	Consider award of PSA for Managed IT services	
ADMIN	CONSENT CALENDAR	Consider award of PSA for Hesse Park Audio Video upgrades	
FINANCE	CONSENT CALENDAR	Treasury Reports (CC) (IA)	
FINANCE	CONSENT CALENDAR	Warrant Register	
PUBLIC WORKS	CONSENT CALENDAR	Consider Amendment No. 1 with Geosyntec for SMBBB water quality monitoring	
PUBLIC WORKS	CONSENT CALENDAR	Consider reaffirming emergency declaration for the sinkhole at Hawthorne Blvd	
PUBLIC WORKS	CONSENT CALENDAR	Consider construction contract for rehabilitation of Silver Spur Rd north of Hawthorne Blvd	
CDD	PUBLIC HEARING	Consider Planning Application Appeal at 125 Spindrifft (ZON 2017-00489)	0:45
FINANCE	PUBLIC HEARING	Consider adjusting the Master Fee Schedule based on CPI	0:15
CDD	REGULAR BUSINESS	Consider review of 2023 Peafowl Census report	0:30
PW/CDD	REGULAR BUSINESS	Report on citywide beautification projects including Lower Hesse and medians	0:30
CDD	REGULAR BUSINESS	Consider code amendments to RPVMC 15.40 to exemption "T" of the landslide moratorium ordinance	0:30
May 16, 2023			
CLOSED SESSION - 6:00 PM			
	CLOSED SESSION	NO ITEMS SCHEDULED AT THIS TIME	
REGULAR MEETING - 7:00 PM			2:30
ADMIN	CONSENT CALENDAR	Minutes	1:00
ADMIN	CONSENT CALENDAR	Consider bi-annual review of Conflict of Interest Code (CC SA and IA)	
FINANCE	CONSENT CALENDAR	Warrant Register	
FINANCE	REGULAR BUSINESS	Consider the Preliminary Budget for FY 23/24	0:30
PUBLIC WORKS	REGULAR BUSINESS	Reassess Encroachment Permit Issuance Protocols	0:30
June 6, 2023			
CLOSED SESSION - 6:00 PM			
	CLOSED SESSION	NO ITEMS SCHEDULED AT THIS TIME	
REGULAR MEETING - 7:00 PM			2:30
ADMIN	CONSENT CALENDAR	Minutes	1:00
ADMIN	CONSENT CALENDAR	Consider Committee and Planning Commission Chair appointments	
ADMIN	CONSENT CALENDAR	Consider canceling July 4 meeting	
FINANCE	CONSENT CALENDAR	Treasury Reports (CC) (IA)	
FINANCE	CONSENT CALENDAR	Warrant Register	
FINANCE	PUBLIC HEARING	Consider FY 23/24 Draft Budget	0:15
ADMIN	REGULAR BUSINESS	Consider Articles of Incorporation & By-laws for RPV Community Foundation	0:15
PUBLIC WORKS	REGULAR BUSINESS	Consider program to address high fire vegetation in canyons by working with neighboring cities/homeowners to address	0:30
June 20, 2023			

TENTATIVE AGENDAS

Agenda items listed below will be presented to the City Council for their consideration

DEPARTMENT	AGENDA SECTION	AGENDA TITLE	ESTIMATED TIME
CLOSED SESSION - 6:00 PM			
	CLOSED SESSION	NO ITEMS SCHEDULED AT THIS TIME	
REGULAR MEETING - 7:00 PM			2:00
ADMIN	CONSENT CALENDAR	Minutes	1:00
FINANCE	CONSENT CALENDAR	Warrant Register	
FINANCE	PUBLIC HEARING	Consider FY 23/24 Budget adoption	0:15
FUTURE AGENDA ITEMS			0:15
<u>Request Date:</u>	<u>Requested By:</u>	<u>Item:</u>	<u>Scheduled Date:</u>
7/16/2019	Dyda	Abalone Cove Sewer Maintenance Fee Options	7/18/2023
7/21/2020	Alegria	Reassess Encroachment Permit Issuance Protocols	5/2/2023
11/2/2021	Alegria	Consider adopting a Homelessness Prevention Plan	4/4/2023
12/21/2021	Bradley	Status report on non native water entering Portuguese Bend landslide	8/1/2023
4/19/2022	Alegria	Stormwater/Drainage Asset Management Update	TBD
4/19/2022	Alegria	Pavement Asset Management Update	4/4/2023
9/6/2022	Cruikshank	Consider a grant program with PVPLC to match funds to promote acacia removal throughout City	4/18/2023
9/6/2022	Cruikshank	Consider program to address high fire vegetation in canyons by working with neighboring cities/homeowners to address	6/6/2023
9/20/2022	Ferraro	Report on citywide beautification projects including Lower Hesse and medians	5/2/2023
3/7/2023	Ferraro	Status update on "Bubbles"	4/18/2023
CITY MANAGER REPORT			0:15

RPVtv Cox 33 / Frontier 38 Programming Schedule Guide Schedule - 3/19/23-3/25/23

	Sunday	Monday	Tuesday	Wednesday	Thursday	Friday	Saturday
	March 19, 2023	March 20, 2023	March 21, 2023	March 22, 2023	March 23, 2023	March 24, 2023	March 25, 2023
6:00 AM - 6:30 AM	Fitness Programming	Fitness Programming	Fitness Programming	Fitness Programming	Fitness Programming	Fitness Programming	Fitness Programming
6:30 AM - 7:00 AM	Fitness Programming	Fitness Programming	Fitness Programming	Fitness Programming	Fitness Programming	Fitness Programming	Fitness Programming
7:00 AM - 7:30 AM	RPV City Talk	RPV City Talk	RPV City Talk	RPV City Talk	RPV City Talk	RPV City Talk	RPV City Talk
7:30 AM - 8:00 AM	Around the Peninsula	Around the Peninsula	Around the Peninsula	Around the Peninsula	Around the Peninsula	Around the Peninsula	Around the Peninsula
8:00 AM - 8:30 AM	Peninsula Seniors Connections	Peninsula Seniors Connections	Peninsula Seniors Connections	Peninsula Seniors Connections	Peninsula Seniors Connections	Peninsula Seniors Connections	Peninsula Seniors Connections
8:30 AM - 9:00 AM							
9:00 AM - 9:30 AM	Fitness Programming	Fitness Programming	Fitness Programming	Fitness Programming	Fitness Programming	Fitness Programming	Fitness Programming
9:30 AM - 10:00 AM	Fitness Programming	Fitness Programming	Fitness Programming	Fitness Programming	Fitness Programming	Fitness Programming	Fitness Programming
10:00 AM -10:30AM	Lectures with Lianne	Lectures with Lianne	Lectures with Lianne	Lectures with Lianne	Lectures with Lianne	Lectures with Lianne	Lectures with Lianne
10:30 AM - 11 AM							
11:00 AM -11:30 AM	RPV City Talk	RPV City Talk	RPV City Talk	RPV City Talk	RPV City Talk	RPV City Talk	RPV City Talk
11:30 AM -12:00PM	Around the Peninsula	Around the Peninsula	Around the Peninsula	Around the Peninsula	Around the Peninsula	Around the Peninsula	Around the Peninsula
12:00 PM -12:30PM	YF-23 Walk Around with Test Pilots	YF-23 Walk Around with Test Pilots	YF-23 Walk Around with Test Pilots	YF-23 Walk Around with Test Pilots	YF-23 Walk Around with Test Pilots	YF-23 Walk Around with Test Pilots	YF-23 Walk Around with Test Pilots
12:30 PM - 1:00PM							
1:00 PM - 1:30PM	Peninsula Seniors Connections	Peninsula Seniors Connections	Peninsula Seniors Connections	Peninsula Seniors Connections	Peninsula Seniors Connections	Peninsula Seniors Connections	Peninsula Seniors Connections
1:30 PM - 2:00PM							
2:00 PM - 2:30PM	Fitness Programming	Fitness Programming	Fitness Programming	Fitness Programming	Fitness Programming	Fitness Programming	Fitness Programming
2:30 PM - 3:00PM	Fitness Programming	Fitness Programming	Fitness Programming	Fitness Programming	Fitness Programming	Fitness Programming	Fitness Programming
3:00 PM - 3:30PM	RPV City Talk	RPV City Talk	RPV City Talk	RPV City Talk	RPV City Talk	RPV City Talk	RPV City Talk
3:30 PM - 4:00 PM	Around the Peninsula	Around the Peninsula	Around the Peninsula	Around the Peninsula	Around the Peninsula	Around the Peninsula	Around the Peninsula
4:00 PM - 4:30PM	RPV City Talk	RPV City Talk	RPV City Talk	RPV City Talk	RPV City Talk	RPV City Talk	RPV City Talk
4:30 PM - 5:00PM	Around the Peninsula	Around the Peninsula	Around the Peninsula	Around the Peninsula	Around the Peninsula	Around the Peninsula	Around the Peninsula
5:00 PM - 5:30PM	Playing the Field- Local Edition	Playing the Field- Local Edition	Playing the Field- Local Edition	Playing the Field- Local Edition	Playing the Field- Local Edition	Playing the Field- Local Edition	Playing the Field- Local Edition
5:30 PM - 6:00PM	Fitness Programming	Fitness Programming	Fitness Programming	Fitness Programming	Fitness Programming	Fitness Programming	Fitness Programming
6:00 PM - 6:30PM	RPV City Talk	RPV City Talk	RPV City Talk	RPV City Talk	RPV City Talk	RPV City Talk	RPV City Talk
6:30 PM - 7:00PM	RPV City Talk	RPV City Talk	RPV City Talk	RPV City Talk	RPV City Talk	RPV City Talk	RPV City Talk
7:00 PM - 7:30PM	Parnelli Jones Local Auto Racing Legend	Parnelli Jones Local Auto Racing Legend	The City of Rancho Palos Verdes LIVE City Council Meeting March 21, 2023	Parnelli Jones Local Auto Racing Legend	Parnelli Jones Local Auto Racing Legend	Parnelli Jones Local Auto Racing Legend	Parnelli Jones Local Auto Racing Legend
7:30 PM - 8:00PM							
8:00 PM - 8:30PM	Around the Peninsula	Around the Peninsula		Around the Peninsula	Around the Peninsula	Around the Peninsula	Around the Peninsula
8:30 PM - 9:00PM	Playing the Field- Local Edition	Playing the Field- Local Edition		Playing the Field- Local Edition	Playing the Field- Local Edition	Playing the Field- Local Edition	Playing the Field- Local Edition
9:00 PM - 9:30PM	RPV City Talk	RPV City Talk		RPV City Talk	RPV City Talk	RPV City Talk	RPV City Talk
9:30 PM - 10:00PM	RPV City Talk	RPV City Talk		RPV City Talk	RPV City Talk	RPV City Talk	RPV City Talk
10:00 PM -10:30PM	Lectures with Lianne	Lectures with Lianne		Lectures with Lianne	Lectures with Lianne	Lectures with Lianne	Lectures with Lianne
10:30 PM -11:00PM							
11:00 PM -11:30PM	Community Announcements	Community Announcements		Community Announcements	Community Announcements	Community Announcements	Community Announcements
11:30 PM -12:00 AM	Community Announcements	Community Announcements		Community Announcements	Community Announcements	Community Announcements	Community Announcements
12:00 AM - 1:00 AM	Community Announcements	Community Announcements	Community Announcements	Community Announcements	Community Announcements	Community Announcements	Community Announcements

	Sunday	Monday	Tuesday	Wednesday	Thursday	Friday	Saturday
	March 19, 2023	March 20, 2023	March 21, 2023	March 22, 2023	March 23, 2023	March 24, 2023	March 25, 2023
6:00 AM - 6:30 AM							
6:30 AM - 7:00 AM							
7:00 AM - 7:30 AM	The City of Rancho Palos Verdes City Council Meeting March 7, 2023	The City of Rancho Palos Verdes City Council Meeting March 7, 2023	The City of Rancho Palos Verdes City Council Meeting March 7, 2023	The City of Rancho Palos Verdes City Council Meeting March 7, 2023	The City of Rancho Palos Verdes LIVE City Council Meeting March 21, 2023	The City of Rancho Palos Verdes LIVE City Council Meeting March 21, 2023	The City of Rancho Palos Verdes LIVE City Council Meeting March 21, 2023
7:30 AM - 8:00 AM							
8:00 AM - 8:30 AM							
8:30 AM - 9:00 AM							
9:00 AM - 9:30 AM							
9:30 AM - 10:00 AM							
10:00 AM -10:30AM							
10:30 AM -11:00AM							
11:00 AM -11:30 AM	The City of Rancho Palos Verdes Planning Commission Meeting February 28, 2023	The City of Rancho Palos Verdes Planning Commission Meeting February 28, 2023	The City of Rancho Palos Verdes Planning Commission Meeting February 28, 2023	The City of Rancho Palos Verdes Planning Commission Meeting February 28, 2023	The City of Rancho Palos Verdes Planning Commission Meeting February 28, 2023	The City of Rancho Palos Verdes Planning Commission Meeting February 28, 2023	The City of Rancho Palos Verdes Planning Commission Meeting February 28, 2023
11:30 AM -12:00PM							
12:00 PM -12:30PM							
12:30 PM - 1:00PM							
1:00 PM - 1:30PM							
1:30 PM - 2:00PM							
2:00 PM - 2:30PM							
2:30 PM - 3:00PM	Community Announcements	Community Announcements	Community Announcements	Community Announcements	Community Announcements	Community Announcements	Community Announcements
3:00 PM - 3:30PM	Community Announcements	Community Announcements	Community Announcements	Community Announcements	Community Announcements	Community Announcements	Community Announcements
3:30 PM - 4:00PM							
4:00 PM - 4:30PM	Community Announcements	Community Announcements	Community Announcements	Community Announcements	Community Announcements	Community Announcements	Community Announcements
4:30 PM - 5:00PM							
5:00 PM - 5:30PM	Community Announcements	Community Announcements	Community Announcements	Community Announcements	Community Announcements	Community Announcements	Community Announcements
5:30 PM - 6:00PM							
6:00 PM - 6:30PM	Community Announcements	Community Announcements	Community Announcements	Community Announcements	Community Announcements	Community Announcements	Community Announcements
6:30 PM - 7:00PM							
7:00 PM - 7:30PM	Community Announcements	Community Announcements	The City of Rancho Palos Verdes LIVE City Council Meeting March 21, 2023	Community Announcements	Community Announcements	Community Announcements	Community Announcements
7:30 PM - 8:00PM							
8:00 PM - 8:30PM	The City of Rancho Palos Verdes City Council Meeting March 7, 2023	Community Announcements		The City of Rolling Hills Estates City Council Meeting	The City of Rancho Palos Verdes LIVE City Council Meeting March 21, 2023	The City of Rolling Hills Estates City Council Meeting	The City of Rancho Palos Verdes LIVE City Council Meeting March 21, 2023
8:30 PM - 9:00PM		Community Announcements					
9:00 PM - 9:30PM		Community Announcements					
9:30 PM - 10:00PM							
10:00 PM -10:30PM		Community Announcements					
10:30 PM -11:00PM							
11:00 PM -11:30PM		Community Announcements					
11:30 PM -12:00 AM							
12:00 AM - 1:00 AM		Community Announcements					
1:00 AM - 6:00 AM							

 Comments or questions? Please email us at RPVtv@rpvca.gov



LOS ANGELES COUNTY SHERIFF'S DEPARTMENT- LOMITA STATION REPORTED CRIMES & ARRESTS BETWEEN (02/26/2023 - 03/04/2023)



LOMITA:

CRIME	FILE #	RD	DATE	TIME	LOCATION-PUBLIC	METHOD OF ENTRY	LOSS-PUBLIC	ADDITIONAL INFORMATION-PUBLIC
SHOPLIFTING	23-00676	1714	2/26/2023	0955	25000 BLK NARBONNE AVE	OPEN FOR BUSINESS	ALCOHOL	SUSPECT MB/55-64/600/175-215 WRG A BLK SHIRT AND BLK PANTS. SUSP WAS SEEN LEAVING LOC IN A BLUE 2006 MINI COOPER.
GRAND THEFT (AUTO)	23-00678	1710	2/25/2023- 2/26/2023	2200- 1000	1900 BLK LOMITA BLVD	N/A	BURGUNDY 2017 KIA SORENTO	SUSPECT(S) UNKNOWN
PETTY THEFT	23-00711	1710	2/28/2023	2250	2400 BLK LOMITA BLVD	N/A	WALLET, US CURRENCY	SUSPECT FB/50 WRG A BLK BEANIE, BLK LONG COAT, WHITE LEGGINGS AND BLK BOOTS.
GRAND THEFT (AUTO)	23-00714	1712	2/26/2023- 2/28/2023	2358- 1030	253RD PL/ OAK ST	N/A	RED 2010 CHEVROLET CAMARO	SUSPECT(S) UNKNOWN
SHOPLIFTING	23-00733	1714	3/3/2023	1217	2000 BLK PCH	OPEN FOR BUSINESS	TOOLS	S1 MH/20'S/BLK HAIR WRG A RED BASEBALL HAT, RED SHIRT, DARL COLORED JEANS, AND WHITE SHOES. SUSP WAS SEEN LEAVING LOC IN A GRY HONDA CRV.
PETTY THEFT (UNLOCKED VEHICLE)	23-00736	1711	3/3/2023	1600- 1730	2400 BLK 253RD ST	UNLOCKED VEHICLE	VEHICLE REGISTRATION, VEHICLE INSURANCE, SKATEBOARDS	SUSPECT(S) UNKNOWN
GRAND THEFT (AUTO)	23-00739	1711	3/3/2023	2100	2300 BLK LOMITA BLVD	N/A	BLK 2015 CADILLAC ESCALADE	SUSPECT(S) UNKNOWN
SHOPLIFTING	23-00747	1714	3/4/2023	1625	2000 BLK PCH	OPEN FOR BUSINESS	TOOLS	S1 MH/30'S/510/THIN BUILD/GRY FACIAL HAIR WRG A BLUE FLANNEL AND RED BASEBALL CAP.
TOTAL ARRESTS: DRUGS - 4, VEHICLE VIOLATIONS - 1, WARRANTS - 1								

RANCHO PALOS VERDES:

CRIME	FILE #	RD	DATE	TIME	LOCATION-PUBLIC	METHOD OF ENTRY	LOSS-PUBLIC	ADDITIONAL INFORMATION-PUBLIC
BURGLARY (VEHICLE)	23-00697	1730	2/27/2023- 2/28/2023	1900- 0630	26000 BLK MENOMINEE PL	FRONT PASSENGER SIDE WINDOW SHATTERED	LAPTOP	SUSPECT(S) UNKNOWN
ATTEMPT BURGLARY (RESIDENTIAL)	23-00719	1737	3/1/2023	1849	VIA DEL CIELO	REAR GLASS FRENCH DOORS SHATTERED	NO LOSS	S1 MH/30'S. S2 MH/30'S. S3 MH/30'S. S4 UNK DESC. SUSPS WERE SEEN LEAVING LOC IN A NEWER MODEL BLK MERCEDES SUV.
PETTY THEFT (UNLOCKED VEHICLE)	23-00745	1732	3/3/2023- 3/4/2023	2100- 0800	5400 BLK MEADOWDALE LN	UNLOCKED VEHICLE	SUNGLASSES, CD BOX	SUSPECT(S) UNKNOWN
TOTAL ARRESTS: ATTEMPT BURGLARY - 1, VEHICLE VIOLATIONS - 4, WARRANTS - 1								

ROLLING HILLS:

CRIME	FILE #	RD	DATE	TIME	LOCATION-PUBLIC	METHOD OF ENTRY	LOSS-PUBLIC	ADDITIONAL INFORMATION-PUBLIC
NO CRIMES DURING THIS TIME								
NO ARRESTS DURING THIS TIME								

ROLLING HILLS ESTATES:

CRIME	FILE #	RD	DATE	TIME	LOCATION-PUBLIC	METHOD OF ENTRY	LOSS-PUBLIC	ADDITIONAL INFORMATION-PUBLIC
GRAND THEFT (CATALYTIC CONVERTER)	23-00688	1720	2/24/2023- 2/27/2023	1700- 1235	SILVER SPRING DR	CATALYTIC CONVERTER	CATALYTIC CONVERTER	SUSPECT(S) UNKNOWN
BURGLARY (RESIDENTIAL)	23-00746	1721	3/3/2023	1936	AURORA DR	SLIDING GLASS DOOR SHATTERED	UNK LOSS AT TIME OF REPORT	S1 MW/30'S WRG A BASEBALL HAT, JACKET, SWEATPANTS, GLOVES, AND HIKING BOOTS. S2 MW/30'S WRG A BASEBALL HAT, SNOW JACKET, SWEATPANTS, GLOVES, AND HIKING BOOTS. S3 MW/30'S WRG SPORT SWEATS, GLOVES, AND HIKING BOOTS.

SHOPLIFTING	23-00748	1724	3/4/2023	1753	PENINSULA CTR	OPEN FOR BUSINESS	MISC MERCHANDISE	S1 MB/20-25/511/200 WRG A BLK "NIKE" ZIP-UP HOODIE, BLK JOGGERS, AND BLK "JORDANS". S2 MB/20-25/511/200 WRG A BLK ZIP-UP WINDBREAKER, GRN JOGGERS, AND BLK "NIKES".
NO ARRESTS DURING THIS TIME								

SAN PEDRO:

CRIME	FILE #	RD	DATE	TIME	LOCATION-PUBLIC	METHOD OF ENTRY	LOSS-PUBLIC	ADDITIONAL INFORMATION-PUBLIC
GRAND THEFT (AUTO)	23-00755	1750	3/4/2023-3/5/2023	2100-0500	1400 BLK 3RD ST	N/A	WHITE 2001 FORD ECONOLINE VAN	SUSPECT(S) UNKNOWN
TOTAL ARRESTS: VEHICLE VIOLATIONS - 1								

PVP:

CRIME	FILE #	RD	DATE	TIME	LOCATION-PUBLIC	METHOD OF ENTRY	LOSS-PUBLIC	ADDITIONAL INFORMATION-PUBLIC
GRAND THEFT (AUTO)	23-00660	1754	2/24/2023	2207	27000 BLK EASTVALE RD	N/A	WHITE 2015 DODGE RAM 2500	S1 MH/30-40/508/MEDIUM BUILD WRG A BLK COVID MASK, GRY HOODED SWEATSHIRT W/ "CHAMPIONS" LOGO ON THE FRONT, AND DARK COLORED PANTS. S2 UNK DESC. SUSPS WERE SEEN LEAVING LOC IN A RED NEWER MODEL DODGE CHARGER.
NO ARRESTS DURING THIS TIME								

****Data included in this report is time sensitive and subject to change.**

PUBLIC RECORDS ACT REQUESTS - TRACKING LOG 2023

DATE OF REQUEST	DATE RECEIVED	REQUESTOR	SUBJECT	ACTION TAKEN
2/8/2023	2/8/2023	Ben Eilenberg	Requesting for All documents referencing the effects of the Portuguese Bend landslide on APN 7572-017-017, All documents referencing the effects of the Portuguese Bend landslide on APN 7572-016-019, All documents referencing the effects of the Portuguese Bend landslide on APN 7572-008-021, All documents referencing the effects of the Portuguese Bend landslide on APN 7572-008-022, All documents referencing the effects of the Portuguese Bend landslide on APN 7572-008-023, All documents referencing the effects of the Portuguese Bend landslide on APN 7572-016-024. All building permits issued by the City of Rancho Palos Verdes for APN 7572-017-017, All building permits issued by the City of Rancho Palos Verdes for APN 7572-016-019, All building permits issued by the City of Rancho Palos Verdes for APN 7572-008-021, All building permits issued by the City of Rancho Palos Verdes for APN 7572-008-022, All building permits issued by the City of Rancho Palos Verdes for APN 7572-008-023, All building permits issued by the City of Rancho Palos Verdes for APN 7572-016-024, All communications with the owners of APN 7572-017-017 from 2000 to the present, All communications with Gretzel Hunt from 2000 to the present, All documents referencing the creation of the Portuguese Bend landslide, All documents referencing the factors contributing to the Portuguese Bend landslide from 2000 to the present, All documents referencing any drainage issues from improvements owned by the City of Rancho Palos Verdes affecting the Portuguese Bend Landslide from 2000 to the present, All documents referencing any drainage issues from improvements maintained by the City of Rancho Palos Verdes affecting the Portuguese Bend Landslide from 2000 to the present, All communications with the Portuguese Bend Community Association regarding the Portuguese Bend landslide from 2000 to the present, All code complaints regarding issues created by the Portuguese Bend landslide from 2000 to the present, All documents referencing the City of Rancho Palos Verdes' policies regarding properties that have shifted from one parcel to another due to the Portuguese Bend landslide, All documents referencing the City of Rancho Palos Verdes' policies regarding demolition permits in Portuguese Bend, All documents referencing complaints to the City of Rancho Palos Verdes regarding the Portuguese Bend Community Association from 2000 to the present, All documents referencing the City of Rancho Palos Verdes' policies regarding buildings on parcels with no permits for the building on that parcel.	2/8/23 AAI Momoli forwarded request to staff. Determination letter was sent on 2/21/23. 3/7/23 First round of production was produced. 3/14/23 Second round of production produced.
2/24/2023	2/24/2023	Steven Griego	Request for any and all records, including all complaints, all notices of violations , any unpermitted foundation work, all requested permits, any work regarding failing septic systems, and all related documents, as well as all communications to and from the City of Rancho Palos Verdes, and any and all owners, including but not limited to Jeffrey J. Carlson, and any residents, regarding the property located at 22 Mustang Road	2/27/23 AA Zweizig forwarded request to staff. 2/27/23 AA Zweizig responded with partial records. 3/7/23 AA Zweizig sent 14-day extension letter.
3/6/2023	3/6/2023	Tiffany Golson	Requesting copies for any open/active zoning, building and fire code violations and copies of certificates of occupancy, variances, special/conditional use perits and final approved site plan issued since 2020 for the property located at 100 Terranea way: 7573014065, 7573014032, 7573014041, 7573014075, 7573014066 7573014050, 7573014026, 7573014074, 7573014018, 7573014034, 7573014044, 7573014079, 7573014017, 7573014052, 7573014025, 7573014078, 7573014016, 7573014033, 7573014043, 7573014077, 7573014071, 7573014051, 7573014095, 7573014076, 7573014063, 7573014035, 7573014094, 7573014081, 7573014072, 7573014053, 7573014096, 7573014080, 7573014064, 7573014036, 7573014099, 7573014083, 7573014069, 7573014054, 7573014097, 7573014082, 7573014061, 7573014027, 7573014098, 7573014070, 7573014045, 7573014102, 7573014062, 7573014028, 7573014100, 7573014067, 7573014046, 7573014101, 7573014059, 7573014029, 7573014105, 7573014038, 7573014047, 7573014085, 7573014056, 7573014030, 7573014084, 7573014037, 7573014048, 7573014087, 7573014055, 7573014031, 7573014086, 7573014040, 7573014049, 7573014089, 7573014058, 7573014103, 7573014088, 7573014039, 7573014104, 7573014090, 7573014057, 7573014024, 7573014092, 7573014060, 7573014042, 7573014091, 7573014068, 7573014023, 7573014093	3/6/23 CC Takaoka forwarded request to staff.

ADVERTISEMENT

CALIFORNIA

A chunk of Rancho Palos Verdes is sliding into the sea. Can the city stop it?



The city of Rancho Palos Verdes is mounting a plan to slow a landslide that has been shifting Portuguese Bend for seven decades. (Robert Gauthier / Los Angeles Times)



A drive along the ocean on the Palos Verdes Peninsula is Southern California at its finest. Sunlight dances on the water. Coves are pristine, unsullied by development. Catalina Island appears so near you can almost spot the bison.

Look a bit closer, though, and you'll see signs of a disaster waiting to happen.

An above-ground sewage pipe snakes along the road. The pavement on Palos Verdes Drive South is rutted and warped, jutting up and down like an asphalt roller coaster. The hills are strewn with houses on makeshift foundations, perched on haphazard stilts and shipping containers.

The problem: A dormant landslide complex that shaped the south side of the Palos Verdes Peninsula for hundreds of thousands of years was reactivated 67 years ago, and it's threatening to destroy homes and infrastructure.

ADVERTISEMENT

The solution: a \$25-million series of wells that will suck water out of the ground and spit it into the ocean, effectively drying up the lubricated landscape enough to stop the

land from sliding.

Palos Verdes Peninsula has long been prone to landslides, and the most dramatic one is affecting Portuguese Bend, an area named after a Portuguese whaling operation, now known for its natural beauty and native vegetation. The geological phenomenon has hit a 240-acre area hard over the last seven decades, causing fissures to open in the earth and homes to strain, buckle and drift, sometimes outright wandering onto adjacent properties.



A map shows the ancient landslide complex affecting Rancho Palos Verdes. (Rancho Palos Verdes)

City officials are mounting a plan to mitigate the landslide before it's too late.

“Something catastrophic is imminent,” said Ara Mihranian, a city planner. Since being named city manager in 2019, he has made slowing the landslide a primary focus.

“Doing nothing is not an option.”

How did this happen?

The Portuguese Bend landslide was triggered in the summer of 1956 — nearly two decades before Rancho Palos Verdes became a city — when a Los Angeles County road crew was constructing an extension of Crenshaw Boulevard that would run from Crest Road to Palos Verdes Drive South.

The crew dug up thousands of tons of dirt for the project and dropped it on top of the ancient landslide zone, which hadn’t moved in 4,800 years. The extension was never completed, but the weight and movement of the dirt shifted the balance of the earth enough to reactivate the slide, sending the land into a slow-motion descent toward the sea.

The slide did the majority of its damage just a few months after it began. The primary victim: Portuguese Bend Club, a beachfront paradise envisioned by Kelvin Vanderlip, son of Frank Vanderlip, who helped develop the Palos Verdes Peninsula in the 1920s.

The coastal complex included a clubhouse, pool, pier and hundreds of homes that occupied the hills above. A few months after the landslide started, it slowly tore up 130 of the homes. The pool was damaged, and the clubhouse was deemed unsafe, closing two years later, [according to the Daily Breeze](#).

The land moves sometimes horizontally, sometimes vertically. Sometimes inches, sometimes feet. Mihranian said it moves at a pace of roughly eight feet, in a southwesterly direction, per year. Over the last 15 years, sections of land have moved anywhere from 100 to 225 feet horizontally and dropped eight to 18 feet vertically.



Rancho Palos Verdes City Manager Ara Mihranian in the Portuguese Bend nature reserve. (Carolyn Cole / Los Angeles Times)

Landslides are common, but what makes Portuguese Bend’s extraordinary is [how slowly but surely it persists](#) — the Aesop tortoise of natural disasters. Scientists and geologists have flocked to the area over the years to study the slide because of its rare combination of size and scope.

Thomas Oommen, professor of geological sciences at Michigan Technological University, said it’s an interesting case study because there are only a few landslides with such significant movement every year. What distinguishes Portuguese Bend is that the slope has not failed catastrophically — yet — and the humans atop are largely staying put, riding the slow-moving land for as long as they can.

The landslide today

In recent years, the landslide’s harm has been more incremental than the initial destruction in 1956. The most noticeable damage is dealt to Palos Verdes Drive South — the road that winds along the coastal cliffs — warping it into a crooked, hilly mess with dips that make your stomach jump. The city has to send a crew once a month to fill cracks, maintenance that costs roughly \$1 million per year.



Sewage pipes run above ground along Palos Verdes Drive South at Portuguese Bend, where a stretch of roadway is uneven and erratic because of land movement on the coastline. (Luis Sinco / Los Angeles Times)

The road is a high-traffic thoroughfare that connects the southern end of the peninsula to the rest of L.A. County, and if the landslide ever severs it — like the one that fissured [Paseo del Mar in San Pedro in 2011](#), sending sections into the sea — it will create a 15-mile detour and cut off a major evacuation route from the fire-prone hills.

“There’s a real risk here,” Oommen said. “If no mitigation measures are taken, it could lead to the destruction of that road.”

Oommen, co-author of [a 2019 report](#) on the landslide, said several factors could cause a complete failure of the hillside. An earthquake would be the obvious culprit, but even a major rainstorm could trigger it.

The slide shifts the land so much that most utilities can't be buried underground, so the city has installed an eyesore: an above-ground sewage line that runs along the side of the road. It's rigged with flexible pipes that can move along with the land. If the landslide ever ruptures the line and the city is delayed in shutting down the valves, it would dump raw sewage onto the beaches, coves and tide pools, said Mihranian.



CALIFORNIA

Column: How I finally learned to care about Orange County's crumbling coastline

March 2, 2023

The homes along and above the road, meanwhile, suffer cracked walls and foundations, busted pipes and crooked windows and door frames. One ranch in the Seaview neighborhood has a roof that's slowly caving in. Another, in the gated community of Portuguese Bend, is perched on eight feet of timber cribbing, a makeshift remedy that essentially suspends the property on supersize Jenga blocks.

Kyle Tourje, [a structural assessor](#) with Alpha Structural, works on homes around Portuguese Bend and is shocked by the solutions people come up with.

"It's so Mickey Mouse, so substandard," he said. "You have a luxury community with world-class golf courses and amazing views of the ocean, but some homeowners are literally living in Third World conditions."



Some houses in Portuguese Bend are propped up on timber cribbing to keep the foundation steady with the shifting land. (Carolyn Cole / Los Angeles Times)

Claudia Gutierrez, a longtime resident and director of the Portuguese Bend Community Assn., said the shifting has cracked her home's concrete foundation and interior walls and jammed windows and doors. Kent Attridge, another resident, recently had a water pipe break.

Since the subterranean land is in a state of flux, homeowners can't build a deep foundation or it'll get sheared apart by the layers of movement. So homes sit on top of the land, bobbing on the surface, wherever it goes.

Residents are unable to make permanent repairs because the city has placed a building moratorium in the active landslide zone. On many calls, Tourje's hands are tied.

“This is right up our alley of work, but the moratorium forbids us from doing anything,” he said. “So you get homeowners supporting their properties with pipe jacks or steel beams, because they’re tired of getting vertigo from the inside of their house being so crooked.”

Locals who have rigged DIY fixes suffer in silence, keeping it quiet from city officials and journalists for fear of losing their homeowners insurance.

Assessing a mobile, er, moving home

It’s one thing for the landslide to damage a house, but what happens when it moves the home entirely off of its property? That’s the conundrum L.A. County Assessor Jeffrey Prang has been tasked with solving.

“When we assess property parcels, the legal description is based on fixed points of reference that are stationary. But in Portuguese Bend, we have property parcels that remain in the same place [on the map], while the house has moved off that fixed parcel onto someone else’s property,” Prang said. “There’s no precedent for this.”



Aerial imagery shows how far one house has moved from its original parcel. (Jeffrey Prang)

Aerial imagery shows how significant the movement has been, with homes shifting over multiple lots and roads in completely different places. There's no legal basis for such a situation, so Prang has relied on judgment and departmental policy. For now, he's treating each home as if it hasn't moved.

That system is working, but the landslide is making the real estate market much more difficult to navigate.

"How do you sell a property and get title insurance if you can't guarantee the land that you're on is yours? Their ability to sell is compromised because of the movement," he said.

One resident tried to take advantage of the crisis and scheme a way into a free house by buying up vacant land and trying to claim that a home had moved onto it. The same

buyer even tried, unsuccessfully, to get a longtime homeowner evicted, claiming that the house was now technically on his land, Prang said.

Lawsuits have been filed over property lines and trespassing allegations.

Much of the confusion is because the city of Rancho Palos Verdes in the early 2000s [adopted a Geographical Information System](#), or GIS, which maps property lines over aerial imagery. It's a common system but one that doesn't account for land that's moving. The map even has a disclaimer on the city's website that says property lines may not be accurate in the landslide zones.

Portuguese Bend residents generally favor a system more in tune with metes and bounds, a mapping method that uses physical landmarks such as trees, walls and roads to measure parcels. Gutierrez describes it as common sense.

"There are 96 properties on the east side of Portuguese Bend. If you go by GIS mapping, every single one is incorrect," she said. "So then you have someone buying a piece of empty land for \$38,000, realizing there's technically a house on it, according to GIS, and then claiming it's worth \$1 million."



CALIFORNIA

How an 'ancient landslide' keeps threatening a railroad, homes in San Clemente

Sept. 27, 2022

Disputes often break out between neighbors about who owns what. Cars and RVs are parked straddling property lines. In one case, a resident cut down someone's wood fence over a property dispute.

Sometimes, the confusion can be dangerous.

Ben Zask, who also serves in the community association, said that when an ambulance was looking for a senior citizen using the GIS map, it went to the wrong address twice before finding the right house.

“A 10-minute delay in an emergency like that can be costly,” Zask said.

The plan to slow the slide

The science behind the landslide is fairly straightforward: Rainwater and irrigation water are absorbed into a particularly absorbent layer of earth.

El Hachemi Bouali, assistant professor of geosciences at Nevada State College, said it all comes down to clay — bentonite and montmorillonite, to be specific. The clay, upon which the main body of the slide sits, swells and becomes soft and slick when mixed with water.

So even though Portuguese Bend’s slope dips toward the ocean at an angle of roughly 5 degrees — less than the 15- to 20-degree slopes of typical landslide areas — the clay becomes slippery enough for the land to ride downward with the force of gravity, as if it were on an icy driveway.

“Everyone looks forward to rain because we’re in a drought. But for a community like ours, we cringe, because we know it’s going to accelerate the landslide at some point,” Mihranian said.



The city is planning to install a series of horizontal dewatering wells that will suck water out of the ground, drying the lubricated clay that's causing the slide. (Robert Gauthier / Los Angeles Times)

In 2017, the city of Rancho Palos Verdes started exploring efforts for long-term stabilization, forming a subcommittee, holding community meetings and hiring a consultant to find the optimal solution. In February, it released a draft of the environmental impact report laying out a possible plan.

The plan hinges on two tactics: stopping rain from getting into the ground and extracting the water that's already there.

To do this, the city is proposing a three-pronged approach: infilling fissures in the earth that let in rain, creating a surface drainage system to send rainwater into the ocean and installing horizontal dewatering wells to suck water out of the ground.



CALIFORNIA

California approaching a record snow year as yet another storm hits

Feb. 27, 2023

The plan is based on measures taken in Abalone Cove, a nearby landslide complex that, thanks to dewatering wells, has slowed land movement to a much more manageable one to two inches per year.

“It’s absolutely a viable solution,” said Tourje, who often installs similar dewatering systems when fixing landslide repair. “It’s a lot of work, but it’s the only feasible way to mitigate this. You can’t beat this, only slow it down.”

The plan, which is [open for public review](#) and will be the focus of a March 21 City Council meeting, will require a budget of \$25 million for the wells and \$8 million for fissure infilling and surface water drainage systems. Although the city is known to be generally affluent, it doesn’t have the tax base to handle such projects on its own.

As a result, the city has applied for \$23.3 million from the Federal Emergency Management Agency through its Building Resilient Infrastructure and Communities grant funding program, and Mihranian is doing everything in his power to secure the money.

“These grants are designed to put measures in place to prevent a catastrophe, and that’s what we’re trying to do here,” he said.

He’s hoping to get the remaining \$10 million needed for the project from the county and state, claiming that the crisis isn’t just a local issue but regional, since the landslide poses risks to county roads and beaches.

“There’s an imminent threat to the environment. Homes are in jeopardy. Lives are in jeopardy,” he said.

If all goes according to plan, the city hopes to start installing the wells in 2024, a process that would take roughly a year.

Most residents are staying put.



Peter James Cavanna is a resident of the private community of Portuguese Bend. Despite the shifting foundation of his home, he does not intend to leave. (Carolyn Cole / Los Angeles Times)

“It’s a testament to the people here. Most situations like this are declared a disaster,” Gutierrez said. “But we’re resilient. We’ve learned how to adapt.”

Times staff writer Hailey Branson-Potts contributed to this report.

CALIFORNIA

REAL ESTATE

CLIMATE & ENVIRONMENT



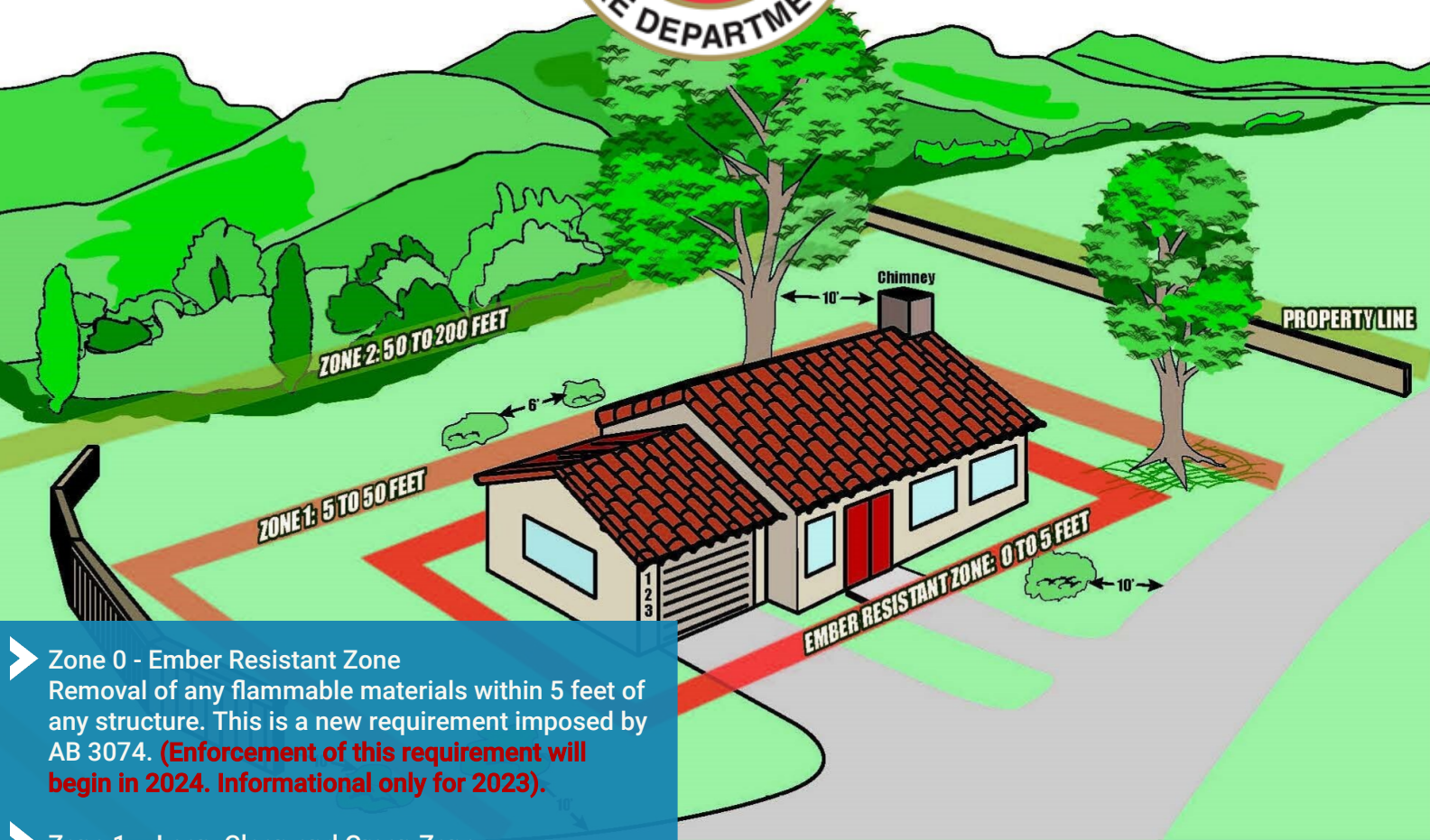
Jack Flemming

 Twitter

 Instagram

 Email

 Facebook



- **Zone 0 - Ember Resistant Zone**
Removal of any flammable materials within 5 feet of any structure. This is a new requirement imposed by AB 3074. **(Enforcement of this requirement will begin in 2024. Informational only for 2023).**
- **Zone 1 – Lean, Clean and Green Zone**
Removal of flammable vegetation within 50 feet of any structure.
- **Zone 2 – Reduce Fuel Zone**
Remaining vegetation for the next 150 feet, for a total of 200 feet, shall be limbed up and include removal of dead wood.
- Specimen native trees and shrubs are permitted, provided they are spaced to not allow transmission of fire to a structure.
- Access roads must maintain 10 feet of brush clearance on each side and shall maintain adequate vertical clearance.
- Fire hydrants shall maintain clearance of 3 feet.

ANNUAL BRUSH CLEARANCE REQUIREMENTS

It is a property owner's responsibility to properly and timely clear vegetation around all structures. A fire safe landscape creates a defensible space to help protect against approaching wildfires and flying embers which could save your home and personal belongings.

For Additional Information Visit:

fire.lacounty.gov/fire-hazard-reduction-program
[LA County Fire Defensible Space Booklet](#)
[Brush Clearance Annual Notice FAQs](#)

INSPECTION TIMELINE

Your local fire station will begin inspections on June 1, 2023. If hazardous fire conditions exist on your property at the time of inspection, You will have 30 days to make the necessary corrections.

INSPECTION FEE

An Inspection Fee of \$100.00 will be assessed on all declared hazardous properties whether or not they are cleared by the property owner. Inspection fees will be assessed annually and applied to your November property Tax Bill.

QUESTIONS?

Contact LA County Fire's
Brush Clearance Unit
Office Number: 626-969-2375
Email: BrushGroup@Fire.LACounty.gov



Brush Clearance Annual Notice FAQs

Residents of the Palos Verdes Peninsula have recently received a Defensible Space Annual Notice (formerly known as the Brush Clearance Annual Notice) from the Los Angeles County Fire Department (LACoFD). Some homeowners are receiving this notice for the first time due to updated mapping software. Consequently, the Peninsula Cities received resident inquiries seeking clarification. In collaboration with the (LACoFD), the four cities of the Palos Verdes Peninsula are providing this Brush Clearance Annual Notice FAQ's with additional information and clarification regarding the current requirements for brush clearance.

Why Did I Receive this Notice?

- The Palos Verdes Peninsula is primarily located within a state-designated Very High Fire Hazard Severity Zone (VHFHSZ).
- State law (California Public Resources Code 4291) requires single-family dwellings within the VHFHSZ to maintain defensible space around these structures at all times.
- The LACoFD conducts defensible space inspections on residential single-family dwellings annually.

What is a Fire Hazard Severity Zone?

- CAL FIRE is required by law to map significant fire hazard areas based on fuels, terrain, local weather, and other factors.
- These designations, known as Fire Hazard Severity Zones (FHSZ), mandate how people construct buildings and protect property to reduce the risk of wildfires.
- The Palos Verdes Peninsula is almost entirely designated as a Very High Fire Hazard Severity Zone (VHFHSZ).

Why is this the First Time I Am Receiving this Notice?

- The LACoFD has recently updated its mapping software using a geospatial database to create its Defensible Space Inspection Program that is significantly more accurate.
- The updated mapping system has resulted in numerous new properties subject to the brush clearance requirement for the very first time

When will My Property be Inspected?

- Your local fire station will begin inspections on June 1, 2023.

Is There a Fee for the Inspection?

- Yes, an inspection fee has always been assessed on properties subject to the required brush clearance. However, in December of 2021, the Board of Supervisors approved increasing the inspection fee over the next 3 years at the following rate (2021 - \$50.00, 2022 - \$100.00, and 2023 - \$151.00).
- The Fee will be assessed in November as part of your property tax bill.



How will I know if I passed the Brush Clearance Inspection?

- An Inspection Report identifying compliance or non-compliance will be left on your door.

Do I Have to be Home for the Brush Clearance Inspection?

- No, your local fire station will attempt to complete the inspection through only unlocked and open access.
- If your gate is locked or your property inaccessible, a notice will be left at your day on who to call to schedule an inspection appointment.

If found to be Non-Compliant, how much time will I have to make corrections?

- Owners have a minimum of 30 days to complete corrections.

Can I Call Someone if I Need Clarity on Requirements?

- Inquiries should be directed to the Brush Clearance Unit at (626) 969-2375.

What Is Assembly Bill 38 (AB 38)?

- Assembly Bill 38 (AB-38), commonly referred to as Real Estate Inspections, took effect on July 1, 2021. AB-38 requires that during escrow the seller of a property in the VHFHSZ submit documentation of a compliant defensible space inspection prior to closing. Homes that received their annual brush inspection within six months of closing can use that inspection, if compliant, to satisfy this requirement

What Is Assembly Bill 3074 (AB 3074)?

- State Assembly Bill 3074 (AB-3074) establishes a new brush clearance zone called “Zone 0”, which is a 5 foot Ember Resistant Zone that requires removal of all flammable materials within 5 feet of any structure.
- Zone 0 requirements will not be enforced until 2024, the LACoFD will be using this year’s inspections to educate property owners on what they need to do to become compliant with next year’s Zone 0 requirements.

Where Can I Get More Information?

- <https://fire.lacounty.gov/fire-hazard-reduction-programs/>
- <https://fire.lacounty.gov/wp-content/uploads/2021/05/Defensible-Space-booklet-2021WEB.pdf>
- <https://openstates.org/ca/bills/20192020/AB3074/>

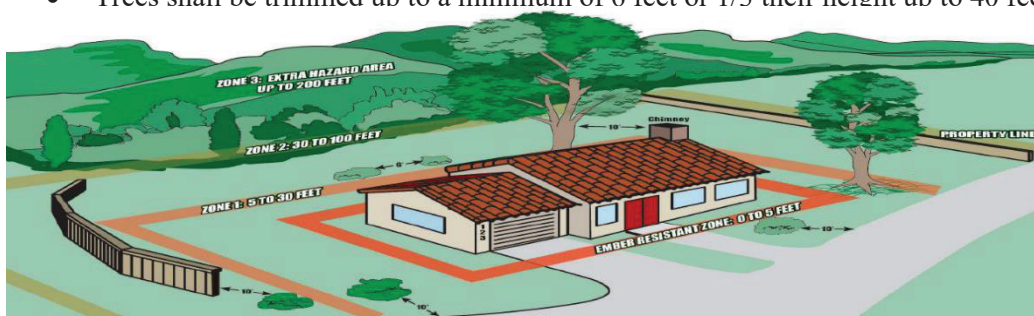


BRUSH CLEARANCE REQUIREMENTS

It is a property owner's responsibility to properly and timely clear vegetation around all structures. A fire safe landscape creates a defensible space to help protect against approaching wildfires and flying embers which could safe your home and personal belongings.

WHAT ARE YOUR RESPONSIBILITIES

- Establish a 5-foot Ember Resistant Zone around all structures. Eliminate all vegetation and materials that could be ignited by embers from a wildfire. **This is a new requirement imposed by the State of California via AB 3074. Enforcement of this requirement will begin in 2024. Informational only for 2023.**
- In the VHFHSZ, a defensible space is considered 200 feet around all structures, based on the following zones:
 - Within the first 5 feet of any structure (Zone 0), removal of all vegetation;
 - Within the next 50 feet of any structure, removal of flammable vegetation is required. Native and ornamental vegetation known to be flammable, including but not limited, to Acacia, Cedar, Cypress, Eucalyptus, Juniper, Pine, and Pampas Grass. Ornamental grasses and ground cover should be maintained at no higher than 3 inches;
 - Within the next 150 feet (or up to the property line), remaining vegetation is required to be thinned
 - Remaining vegetation for the next 150 feet (or up to property line) around any structure is required to be cleared, trimmed, thinned, limbed up removing flammable vegetation and dead wood;
 - The total defensible space should measures a total of 200 feet from any structure (or up to the property line);
 - Specimen native trees and shrubs are permitted, provided they are spaced to not allow transmission of fire to a structure; and,
 - It is recommended that specimen shall be spaced a minimum of 15 feet or 3 times diameter from other specimens, structures or surrounding native brush.
- Access road shall be maintained with a minimum of 10 feet of brush clearance on each side. Fire access roads shall have an unobstructed vertical clearance to the sky. Trees overhanging fire access road shall be maintained to provide adequate vertical clearance.
- Fire hydrants shall maintain clearance of 3 feet.
- All trees and shrubs shall be maintained free of deadwood and litter.
 - Shrubs shall be trimmed up from the ground 1/3 of their height.
 - Trees shall be trimmed up to a minimum of 6 feet or 1/3 their height up to 40 feet.



PREPARE FOR WILDFIRES: CREATE AND MAINTAIN A DEFENSIBLE SPACE