



CITY OF RANCHO PALOS VERDES

# CITY MANAGER'S WEEKLY ADMINISTRATIVE REPORT

**JUNE 21, 2023 (REPORT NO. 23-25)**

## **TABLE OF CONTENTS**

### **CITY MANAGER - PAGE 4**

- June 20, 2023, City Council Meeting Highlights
- City Council Honors Team RPV Interns, Outgoing SBCCOG Chair Mayor Pro Tem Cruikshank
- New High-Capacity HeloPod Will Help Fight Wildfires
- 50<sup>th</sup> Anniversary Celebration – Save the Date
- Metro C and K Line Operating Plan
- RPV Participates in Doors Open Peninsula Event
- Celebrate Safely: Fireworks are Prohibited
- National Mosquito Control Awareness Week - June 18-24, 2023
- Emergency Preparedness
  - PLAN. PREPARE. EVACUATE – Wildfire Preparedness
  - EPC Monthly Disaster Preparedness Messaging
  - Emergency Preparedness Tips
    - First Day of Summer - Wildfire Preparedness
    - Extreme Heat Safety Tips
- Public Safety
  - Weekly Crime Report Summaries
  - Better Together: Summer Vacation Ready

### **FINANCE - PAGE 19**

- Fiscal Year 2023-24 Adopted Budget

## PUBLIC WORKS - PAGE 20

- Public Works Projects
  - Ladera Linda Community Park Project Update
  - Rehabilitation of Silver Spur Road North of Hawthorne Boulevard
  - Notice of Public Hearing Citywide Landscaping and Lighting Maintenance District for Fiscal Year 2023-24
  - Neighborhood Beautification Grant Program Coming Soon!
  - The Goats are Here for Fuel Modification Season
- Maintenance Activities
  - Park Maintenance
  - Street Landscaping
  - Roadway Pothole and Road Repair
  - Graffiti Removal
  - Emergency Issues

## COMMUNITY DEVELOPMENT - PAGE 28

- Eco Gardner Program: Upcoming Classes
- South Bay Cities Council of Governments (SBCCOG) Housing Education Forum
- Senior Services in the South Bay
- Planning Commission Meeting Agenda

## RECREATION AND PARKS - PAGE 30

- Highlights
  - First Summer Concert Rocked
  - Start the Countdown: Fourth of July Lights Up the Night in 2 Weeks
  - REACH Springs into Action
  - For the Love of Bocce!
  - RPV Volunteer Program
  - Ferrari Car Rally
- Parks and Facilities
  - Parks Weekend Attendance Report
- Preserve Updates
  - Preserve and Beach Weekend Activity
  - Abalone Cove Reserve
  - Alta Vicente Reserve
  - Portuguese Bend Reserve

## CORRESPONDENCE AND INFORMATION RECEIVED (See Attachments)

- Calendars – Page 38
- Tentative Agendas – Page 41
- Channels 33 and 38 Schedule – Page 44
- Channels 35 and 39 Schedule – Page 45
- Crime Reports – Page 46
- PRA Log (Open Requests) – Page 49

## CITY MANAGER'S OFFICE

### June 20, 2023, City Council Meeting Highlights

Last night, the City Council approved the final City budget and City Council Goals for 2023-24. Be sure to check the City website in the coming weeks for the Budget in Brief, an easy-to-read summary of the City's \$38.9 million balanced budget and \$4.9 million Capital Improvement Program. The City remains fiscally strong with healthy reserves.

The Council also approved a \$7.8 million Sheriff's Department contract for the next fiscal year, directing City staff to look into cost saving opportunities while maintaining sheriff's services.



For all City Council actions from the meeting, watch video at [rpvca.gov/agendas](https://rpvca.gov/agendas).



### City Council Honors Team RPV Interns, Outgoing SBCCOG Chair Mayor Pro Tem Cruikshank

Last night, the City Council also celebrated the City's spring interns, who each presented on their projects and learning experiences working at City Hall. Congratulations,



Samantha Crew, Charlize Hernandez, William Maltz, Jared Ngoie, Lyanna Nguyen, and Grey Patton, for their outstanding work! We hope you will consider a career with us someday.

## New High-Capacity HeloPod Will Help Fight Wildfires

On June 20, Mayor Barbara Ferraro, Mayor Pro Tem John Cruikshank, and Councilmember Paul Seo joined officials from the four Peninsula cities, the Los Angeles County Fire Department, Cal Water, and Los Angeles County Supervisor Janice Hahn at the Ken Dyda Civic Center to commission a new HeloPod firefighting dip source and cistern just in time for the wildfire-prone summer and fall months.



A HeloPod allows a firefighting helicopter to automatically fill up four times faster while hovering than by replenishing its tank by landing. When every second counts, this time-saving measure can help save and protect lives and homes.

Funded through a Cal Water grant for \$38,000, the 7,000-gallon capacity HeloPod is installed and housed at the Ken Dyda Civic Center and will benefit and protect communities throughout Southern California. A helicopter demonstration utilizing the new HeloPod was performed following the news conference.



The City is happy to accommodate the new HeloPod at the Ken Dyda Civic Center, where a helipad has been used for years to support firefighting operations. We are

grateful to Cal Water and the Los Angeles County Fire Department for their partnership and for making it possible to bring this new tool for fire suppression to the Palos Verdes Peninsula, especially Rancho Palos Verdes, with its vast open space areas, canyons, and the 1,500-acre Palos Verdes Nature Preserve.

## 50<sup>th</sup> Anniversary Celebration – Save the Date

The 50<sup>th</sup> Anniversary celebration will culminate on September 9, 2023, with a black-tie reception at the Terranea Resort. Be sure to save the date!

Ticket sales will begin July 10 at a pre-sale price of \$175 per person. The pre-sale price will conclude on August 7 at 5:30 p.m., and general ticket sales will increase to \$200 per person. For more information about the city's 50<sup>th</sup> anniversary events, please visit [rpv50.com](http://rpv50.com).



**Save the Date**

**50<sup>th</sup> Anniversary Banquet Dinner**  
September 9, 2023 | Terranea Resort

6 pm Reception  
7:30 pm Dinner  
Tickets: [rpv50.com](http://rpv50.com)  
*Black-Tie Attire*



Pre-Sale Tickets: \$175  
July 10- August 7  
General Sale Tickets: \$200  
Starting August 8

## Metro C and K Line Operating Plan

In May 2022, the South Bay Cities Council of Governments (SBCCOG) Transportation Committee considered Metro's Operating Plan Options for the C and K lines. At that time, SBCCOG recommended Option 2. Metro completed numerous public outreach activities and surveys to gather public input from May 2022- Spring 2023, and then on June 12, 2023, SBCCOG received a report from Metro regarding their findings. Ultimately, SBCCOG continued to support Option 2 as presented by Metro, which will provide the most utility to South Bay riders with a one-seat ride or single transfer to most destinations in Los Angeles.



At the request of Mayor Pro Tem Cruikshank, Mayor Ferraro signed a letter of support for the Metro C and K Line Operation Plan, Option 2. The proposed line will provide a direct connection to the LAX/Metro Transit Center from all C and K line stations. The new metro rail line would connect the Green Line Redondo Beach Station to the Exposition Line Crenshaw Station, with plans to extend to the south to Torrance Transit Center and north to Hollywood.





## RPV Participates in Doors Open Peninsula Event

On June 17, Mayor Pro Tem John Cruikshank and Staff participated in the Palos Verdes Library District's Doors Open Peninsula event, a Palos Verdes Peninsula-wide open house marking the 100<sup>th</sup> anniversary of the development of the Peninsula.

Over 100 visitors explored the grounds of the Ken Dyda Civic Center, where Los Serenos de Point Vicente docents shared the site's military history outside the Battery Barnes WWII-era bunker and gave rare public tours of one of the Civic Center's two Nike missile silos. Historian Sian Winship, who helped prepare the City's nomination of the Hatano Farm for state historic designation, told visitors about the history of the farm and of the Japanese American agricultural tradition that once dominated the Peninsula.



Mayor Pro Tem Cruikshank participated in festivities at the Palos Verdes Peninsula Unified District Office in Malaga Cove, where a real estate rally that inspired the event was held exactly 100 years ago to entice buyers to purchase property on the Peninsula.

Visitors collected stamps in informative [passport brochures](#) that covered over 50 historic sites throughout the Peninsula. In addition to the Civic Center, the City's participating sites included the Tongva Monument at Abalone Cove Park, the Point Vicente Interpretive Center and Lower Point Vicente Park, and a plaque at Founders Park commemorating the first Japanese American farm on the Peninsula.

## Celebrate Safely: Fireworks are Prohibited

In anticipation of the upcoming holiday, the City of Rancho Palos Verdes and partner Peninsula cities want you to celebrate safely with the reminder that fireworks are illegal on the Peninsula.

With vast open space areas and canyons full of brush, virtually the entire City of Rancho Palos Verdes falls in a Cal Fire-designated Very High Fire Hazard Severity Zone. It can only take one spark to ignite a catastrophic wildfire on the Peninsula, threatening lives and property in an area with limited evacuation routes. Fireworks can also trigger extreme episodes of trauma and fear in those who have post-traumatic stress disorder and in pets. Report fireworks to the Lomita Sheriff's Station at (310) 539-1661



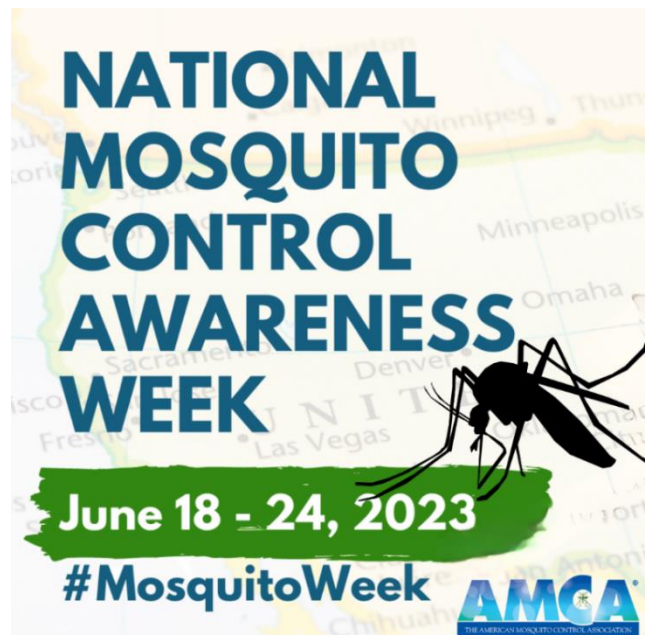
Fines for lighting or launching fireworks in the City begin at \$1,000 for the first offense, \$5,000 for the second offense and \$7,500 for each subsequent offense.

## National Mosquito Control Awareness Week - June 18-24, 2023



In recognition of National Mosquito Control Awareness Week (June 18 – June 24, 2023), the Los Angeles County West Vector Control District

joins public health agencies throughout the country to encourage residents to protect themselves from mosquito-borne diseases. With the arrival of summer, warm weather and standing water can create ideal conditions for mosquito breeding. Residents can help reduce mosquitoes around their





community by eliminating standing water around their homes.

West Nile virus (WNV) is the most prevalent and serious mosquito-borne disease in California. Over 7,500 human West Nile virus cases and more than 345 deaths have been reported in California since 2003. Culex mosquitoes can spread West Nile virus through their bites. These mosquitoes will feed on humans, birds, and other animals at dawn and dusk.

Invasive Aedes mosquitoes primarily bite during the day. These mosquitoes have the potential to transmit diseases like dengue, chikungunya, Zika, and yellow fever. Although these viruses are currently not known to be transmitted locally, travel-associated infections have been reported in California.

Everyone can do their part to help prevent mosquito bites:

- Wear EPA-recommended repellents, including DEET, picaridin, oil of lemon eucalyptus, or IR3535.
- Dress in long sleeves and pants while outdoors.
- Eliminate standing water in flowerpots, saucers, old tires, buckets, pet dishes, trash cans, toys, or anything that holds water for over a week.
- Properly maintain swimming pools, spas, and ponds.
- Install screens on windows and doors to keep mosquitoes out of your home.
- Clean rain gutters and cover openings in rain barrels with mosquito-proof screens.
- Report mosquito activity or request an inspection at (310) 915-7370 or online ([www.lawestvector.org/service-request/](http://www.lawestvector.org/service-request/)).
- Some bird species, like crows, can become infected with West Nile virus. Report dead birds to the WNV Call Center at (877) WNV-BIRD or online (<https://westnile.ca.gov/report.php>).

For additional information on mosquitoes and mosquito-borne diseases, please visit [www.lawestvector.org](http://www.lawestvector.org).



## PLAN. PREPARE. EVACUATE – Wildfire Preparedness

Last week's brushfire in Rolling Hills Estates reminds us that wildfire preparedness is essential for our community. With this in mind, the four Peninsula cities, in collaboration with our public safety partners, have launched an evacuation readiness website, [PVPready.gov](https://PVPready.gov). This platform is designed to efficiently equip Peninsula residents and businesses with the tools necessary to evacuate during emergencies. [PVPready.gov](https://PVPready.gov) incorporates a cloud-based evacuation platform. It offers pre-established, Peninsula-wide evacuation zone maps, thus providing a comprehensive

source of verified emergency information. These zones benefit residents and aid fire, police, and other emergency service agencies in their preparedness efforts, streamlining the evacuation process and reducing confusion during emergencies.

As Southern California enters its peak fire season, Peninsula residents must be vigilant and proactive. It's now more important than ever to prioritize wildfire prevention and preparedness.

To help safeguard your home and prepare your family, please consider the following recommendations:

- Visit [PVPReady.gov](https://pvpready.gov) to identify and memorize your zone. It's vital to #KnowYourZone before an emergency strikes. Save this information in your smartphone, write it down, and place it somewhere easily accessible, such as on your refrigerator or near your front door.
- Familiarize yourself with low-cost and no-cost measures to protect your home from wildfire using these tip sheets:  
<http://rpvca.gov/ArchiveCenter/ViewFile/Item/2776>
- Download the L.A. County Fire Department's "Ready! Set! Go!" Personal Wildfire Action Plan from [fire.lacounty.gov/rsg](https://fire.lacounty.gov/rsg). This guide will assist you in creating an effective emergency kit.
- Create an [evacuation plan](#) and regularly rehearse it with your family, ensuring everyone knows what to do and where to go during an emergency.
- Register for Alert SouthBay emergency notifications by texting "alertsb" to 888-777, visiting [alertsouthbay.com](https://alertsouthbay.com), or downloading the Everbridge app. These alerts will keep you informed during emergencies.
- In the event of an emergency, visit [PVPReady.gov](https://pvpready.gov) to check if your zone is under evacuation. Remember, cell phone and internet service may be unreliable during these times, so keep a battery-operated radio handy to access news updates.
- Go to [PVPReady.gov](https://pvpready.gov) to learn more.

## EPC Monthly Disaster Preparedness Messaging

The City of Rancho Palos Verdes Emergency Preparedness Committee, provides monthly email messaging to residents with emergency preparedness information and educational materials.

To receive the Committee's monthly messaging, be sure to sign up for the Emergency Notifications City listserv at [rpvca.gov/notify](http://rpvca.gov/notify). For additional information about emergency preparedness, visit [rpvca.gov/emergency](http://rpvca.gov/emergency).



**RPV EMERGENCY PREPAREDNESS COMMITTEE TIPS**

After an emergency, you may need to survive on your own for several days. Being prepared means having your own **food, water** and other **supplies** to last for several days. A disaster supplies kit is a collection of basic items your household may need in the event of an emergency.

Make sure your emergency kit is stocked with the items on the checklist below. [Download a printable version](#) to take with you to the store. Once you take a look at the basic items consider what **unique needs** your family might have, such as supplies for **pets or seniors**.

**Basic Disaster Supplies Kit**

To assemble your kit, store items in airtight plastic bags and put your entire disaster supplies kit in one or two easy-to-carry containers such as plastic bins, duffel bag, or backpack.

A basic emergency supply kit could include the following recommended items:

- **Water** (one gallon per person per day for several days, for drinking and sanitation)
- **Food** (at least a several-day supply of non-perishable food)
- Battery-powered or hand crank radio
- Flashlight with extra batteries
- First aid kit
- Whistle (to signal for help)
- Dust mask (to help filter contaminated air)
- Plastic sheeting and duct tape (to [shelter in place](#))
- Moist towelettes, garbage bags and plastic ties (for personal sanitation)
- Wrench or pliers (to [turn off utilities](#))
- Manual can opener (for food)
- Local maps
- Cell phone with chargers and a backup battery

**Additional Emergency Supplies**

Consider adding the following items to your emergency supply kit:

- **Masks**, soap, hand sanitizer, disinfecting wipes to disinfect surfaces
- **Prescription medications** and non-prescription medications such as pain relievers, anti-diarrhea medication, antacids or laxatives
- Prescription eyeglasses and contact lens solution
- Infant formula, bottles, diapers, wipes and diaper rash cream
- Pet food and extra water for your pet
- Cash or traveler's checks
- Important family documents such as copies of insurance policies, identification and bank account records saved electronically or in a waterproof, portable container
- Sleeping bag or warm blanket for each person
- Complete change of clothing appropriate and sturdy shoes
- Fire extinguisher
- Feminine supplies and personal hygiene items
- Mess kits, paper cups, plates, paper towels and plastic utensils
- Paper and pencil
- Books, games, puzzles or other activities for children

## EMERGENCY PREPAREDNESS TIPS

### First Day of Summer - Wildfire Preparedness

June 21 was the first day of summer! Hotter temperatures mean dry vegetation, creating the perfect conditions for a wildfire. Protect your home and family today by taking steps to be wildfire ready! Learn more at [readyforwildfire.org](http://readyforwildfire.org)







## Extreme Heat Safety Tips

Extreme heat is a period of high heat and humidity with temperatures above 90 degrees for at least two to three days. In extreme heat, your body works extra hard to maintain a normal temperature, which can lead to death. In fact, extreme heat is responsible for the highest number of annual deaths among all weather-related hazards.

With extreme heat forecasted for a large portion of Los Angeles County through Saturday, June 19, the City reminds residents to take the following precautions to avoid heat-related illness, particularly among older adults, small children, outdoor workers, athletes, and those with a chronic medical condition who are particularly vulnerable to the negative health effects of extreme heat.

When experiencing hot temperatures, it's important to remember to: **Stay cool, Stay hydrated, and Stay informed.**





### STAY COOL:

- **Wear Appropriate Clothing:** Choose lightweight, light-colored, loose-fitting clothing.
- **Stay Indoors:** Stay in an air-conditioned place as much as possible. If your home does not have air conditioning, go to a shopping mall or public library— even a few hours spent in air conditioning can help your body stay cooler when you go back into the heat.
- **Schedule Outdoor Activities Carefully:** Limit your outdoor activity to when it's coolest, like morning and evening hours. Rest often in shady areas so that your body has a chance to recover.
- **Pace Yourself:** Cut down on exercise during the heat. If you're not accustomed to working or exercising in a hot environment, start slowly and pick up the pace gradually. If exertion in the heat makes your heart pound and leaves you gasping for breath, STOP all activity. Get into a cool area or the shade, and rest, especially if you become lightheaded, confused, weak, or faint.

### STAY HYDRATED:

- **Drink Plenty of Fluids:** Drink more fluids, regardless of how active you are. Don't wait until you're thirsty to drink.
- **Stay away from very sugary or alcoholic drinks**—these cause you to lose more body fluid. Also, avoid very cold drinks because they can cause stomach cramps.
- **Replace Salt and Minerals:** Heavy sweating removes salt and minerals from the body that need to be replaced. A sports drink can replace the salt and minerals you lose in sweat.
- **Keep Your Pets Hydrated:** Provide plenty of fresh water for your pets and keep the water in a shady area.

### STAY INFORMED:

- **Check for Updates:** Monitor your local news for extreme heat alerts and learn about any cooling shelters in your area.
- **Know the Signs:** Learn the signs and symptoms of heat-related illnesses and how to treat them.

○ **HEAT CRAMPS**

- **Signs:** Muscle pains or spasms in the stomach, arms, or legs.
- **Actions:** Go to a cooler location. Remove excess clothing. Take sips of cool sports drinks with salt and sugar. Get medical help if cramps last more than an hour.

○ **HEAT EXHAUSTION**

- **Signs:** Heavy sweating, paleness, muscle cramps, tiredness, weakness, dizziness, headache, nausea, vomiting, and fainting.
- **Actions:** stop physical activity, move to an air-conditioned place, and lie down. Loosen or remove clothing. Take a cool bath. Take sips of cool sports drinks with salt and sugar. Get medical help if symptoms get worse or last more than an hour.

○ **HEATSTROKE**

- **Signs:** Extremely high body temperature (above 103 degrees) taken orally; Red, hot and dry skin with no sweat; Rapid, strong pulse, dizziness, confusion, or unconsciousness.
- **Actions:** Call 9-1-1 or get the person to a hospital immediately. Cool down with whatever methods are available until medical help arrives.

**Additional Resources**

- [Publichealth.lacounty.gov/ExtremeHeat](https://publichealth.lacounty.gov/ExtremeHeat)
- [www.cdc.gov/disasters/extremeheat](https://www.cdc.gov/disasters/extremeheat)
- [www.ready.gov/heat](https://www.ready.gov/heat)
- [Cal OES Summer Heat Resources](#)





## Weekly Crime Report Summaries

The Lomita Sheriff's Station provides weekly crime report summaries for the City of Rancho Palos Verdes. The summaries are updated on the [City's website](#), distributed via [Nextdoor](#) and the Public Safety Alerts [listserv](#), and included in the Weekly Administrative Report (see attachments).

For assistance accessing the Weekly Crime Reports, or navigating the mapping feature on the City's website, email [PublicSafety@rpvca.gov](mailto:PublicSafety@rpvca.gov).


Attachments:

[Crime Report for the week beginning June 4](#)

## Better Together: Summer Vacation Ready

 Keep Your Summer Home Safe! 

Don't have a ring camera? Don't worry, you can rent one from the RPV for FREE. Contact [PublicSafety@rpvca.gov](mailto:PublicSafety@rpvca.gov) to borrow a ring camera for up to 30 days so you can keep an eye on your home while you are away. Learn more about this program [here](#) and apply today!

 Enjoy worry-free vacations with these quick tips:

1. Lock up: Secure doors and windows before you leave.
2. Light it up: Install motion sensor lights around your property.



3. Home security: Consider a reliable alarm system.
4. Trusted neighbors: Let them know you're away.
5. Hide valuables: Keep them out of sight.
6. Social media silence: Save vacation updates for later.
7. Stop deliveries: Pause mail and newspapers.
8. Pool safety: Fence it, supervise kids.
9. Fire ready: Check smoke detectors and have an evacuation plan.

☀️ Have a safe summer, and remember, we are all Better Together! ☀️

**Attachments:**

Letter of Support of Metro C & K Line Option 2 – Page 50

Metro Presentation C & K Line Operating Plan – Page 51

June 12, 2023, SBCCOG Staff Report Metro C & K Line Operating Plan Position – Page 59

Doors Open Peninsula Brochure – Page 65

Press Release from County of Los Angeles Public Health (Mosquitos) – Page 85

## FINANCE DEPARTMENT

### Fiscal Year 2023-24 Adopted Budget

The City Council unanimously adopted the Citywide FY 2023-24 Budget at the meeting on June 20, 2023. This includes total revenues of nearly \$53 million and expenditures of roughly \$61 million, including transfers and Improvement Authorities. The budget adoption represents the final stage of a meticulous development process and documents the City's financial plan and priorities for the upcoming fiscal year.



### FY 2023-24 General Fund Budget

The adopted General Fund budget includes revenues of almost \$38.8 million and expenditures of \$38.1 million, including transfers.

General Fund revenues, excluding transfers, are expected to exceed the FY 2022-23 year-end estimates by \$846,000, or 2.2%. Major revenue sources include

Property Tax, Transient Occupancy Tax (TOT), and Sales Tax, to name a few. The most prominent funding source, Property Tax, represents nearly 45% of the total revenues and has continuously demonstrated stability and year-over-year growth. TOT is the second largest revenue source in the General Fund and accounts for 18% of total revenues. Combined, these two revenue sources total 63% of the General Fund, not including transfers.

Overall, General Fund expenditures in FY 2023-24 are budgeted at almost \$38.1 million, including transfers out. This amount is an increase of almost \$3 million, or 10%, over the FY 2022-23 year-end estimates. Including transfers, the change is a slight decrease of \$0.3 million, or 1%. The FY 2023-24 budget continues to meet City Council Policy No. 45 - Balanced Operating Budget. The fund balance for the General Fund as of June 30, 2024, is estimated at \$31.1 million, net of transfers. After accounting for the City Council Reserve Policy of 50% and additional transfers to the CIP Fund and Employee Pension Service Fund, the Unrestricted Fund Balance is estimated at \$13.1 million.



## PUBLIC WORKS DEPARTMENT



### Ladera Linda Community Park Project Update

Last week, construction crews installed exterior insulation boards for the building's exterior walls, installed restroom partitions, and continued installing the security roll up doors.

Crews completed fencing for the paddle tennis courts and continued installing gates and fencing at the utility enclosure and the lower tier maintenance driveway.

Crews also continued installing the irrigation systems on all three tiers of the site, installing the decomposed granite path at the upper tier, and fine grading and paving around the building perimeter. Crews started forming concrete curbs around the play areas and setting the HVAC units in the utility enclosure.



This week, crews are scheduled to continue installing the security roll up doors, electrical wiring, HVAC connections, perimeter paving and begin exterior tiling. Crews are also scheduled to continue installing site fencing, irrigation, decomposed granite paths, and handrails at locations around the site.

To see a current (refreshed once per minute) live view of the project site, you can visit the project page on the City website at: [rpvca.gov/LaderaLinda](http://rpvca.gov/LaderaLinda)

If you have any questions or would like to learn more about this project please contact, James O'Neill at [joneill@rpvca.gov](mailto:joneill@rpvca.gov)



## Rehabilitation of Silver Spur Road North of Hawthorne Boulevard

Last week, crews began work on rehabilitating Silver Spur Road north of Hawthorne Boulevard. Crews repaired and replaced the damaged sidewalk and curb and installed new ADA-compliant curb ramps. Next week, work will begin on repairing areas of deteriorated asphalt and replacement of the top layer of asphalt.

Staff coordinated the construction schedule with the Palos Verdes Peninsula High School (PVPHS) administration to minimize impacts on school operations during construction. Accordingly, summer school is not being held at PVPHS this year, and sports activities will be limited to practices only. Construction is planned to conclude by July 16, 2023, to allow regular school activities to resume as scheduled.







## **Notice of Public Hearing Citywide Landscaping and Lighting Maintenance District for Fiscal Year 2023-24**

On June 20, 2023, the City Council continued the public hearing for the Citywide Landscaping and Lighting Maintenance District to the July 18, 2023, Council meeting to allow sufficient time for advertising of the public hearing. The continued hearing will be conducted during the City Council meeting at 7:00 p.m. at Fred Hesse Community Park, 29301 Hawthorne Boulevard.

On June 6, 2023, the City Council adopted Resolution No. 2023-25 declaring its intention not to levy and collect assessments within the Citywide Landscaping and Lighting Maintenance District for Fiscal Year 2023-24. For questions or comments, please contact Vanessa Hevener at 310-544-5333 or [vhevener@rpvca.gov](mailto:vhevener@rpvca.gov).

## **Neighborhood Beautification Grant Program Coming Soon!**

Neighborhoods can submit an application for a beautification project visible from an arterial or collector street, to receive a reimbursement for 50% of their project costs, up to \$5,000. Applications will be accepted beginning on July 3, 2023, and the application window will be open until August 31, 2023, at 4:30 p.m. For full program details, visit [rpvca.gov/NBG](http://rpvca.gov/NBG).



## **The Goats are Here for Fuel Modification Season**

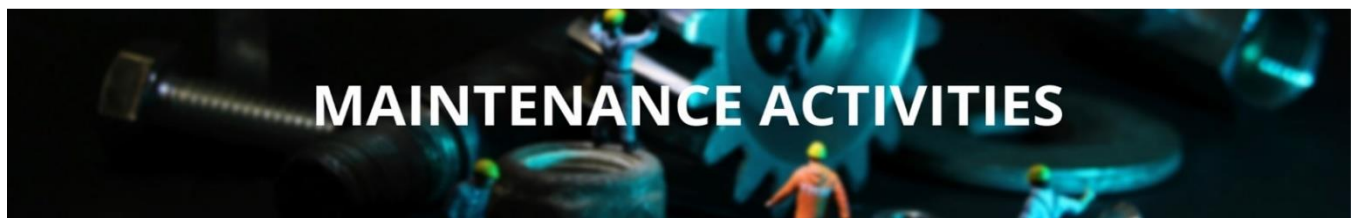
Goats are in the City to perform the important job of helping reduce fire loads and protect homes. Although we understand many people enjoy seeing the goats, please refrain from going to see them out of respect for residents living near where the goats work.



A temporary electrified fence is used to contain the goats while they are working, and attempting to approach them puts you as well as the goats at risk.

Please avoid attempting to take selfies/pictures or trying to touch the goats, especially if you have dogs or pets with you. This will prevent stress and/or injury to you and the goats.

In addition to the goats, you may see Stay Green crews performing brush clearance in various areas of the City as part of the City's 2023 fuel modification program.



### **Maintenance Activities**

In addition to regularly scheduled maintenance and repairs, Public Works performed the following:

## PARK MAINTENANCE

- Weekly landscape maintenance at all City parks.
- Daily cleaning and sanitizing of park facilities.
- Eleven irrigation repairs were completed this week at parks and facilities.
- Painted the hallway wall inside McTaggart Hall at Hesse Park.
- Repaired a downed railing located at Seascapes Trail at Oceanfront Estates.



## STREET LANDSCAPING

### **Street Median and Public Right of Way Landscape Maintenance**

Public Works is working to secure additional landscape crews through various vendors to accelerate the work. Public Works expects to continue to deploy additional resources in the coming weeks.

- Weed removal, brush clearance, and debris removal continued this week at the following median and right of way locations:
  - Palos Verdes Drive West from Hawthorne Boulevard to Point Vicente Interpretive Center (PVIC).
  - Palos Verdes Drive South from PVIC to Terranea Way.
- Next week, crews are expected to complete trimming and de-weeding on Forrestal Drive and Palos Verdes Drive West from Hawthorne Boulevard to Palos Verdes Estates Border.
- Public Works has increased landscape crew resource levels to control weeds resulting from the historic rainfall during this rainy season.





### **Public Right of Way/Roadway Repairs**

- Repaired sidewalk deviations in the right-of-way at the following locations:
  - 28045 Acana Road
  - Surrounding sidewalks of Point Vicente Elementary School
- Re-striped the turn lanes and crosswalks on Crestridge Road at Crenshaw Boulevard.
- Repainted and refreshed the red curb at 5658 Ravenspur Drive.
- Cleared the gutters of debris on upper Crest Road East.
- Repaired a leaning stop sign at West General St. and Enrose Avenue.
- Repaired the access roadway at Beach School Trail.





## Graffiti Removal

- Thirteen cases of graffiti were reported and removed this week.
- The RPV graffiti reporting app can be downloaded for Android and Apple devices under the name “**RPV Clean.**” Residents can help keep RPV looking great by using this app.



## Emergency Response

- This week, the Public Works Department responded to an emergency call of a water leak at 88 Narcissa. Staff investigated the leak and determined that the source of the water was a Cal Water line. Staff remained onsite and assisted Cal Water in the immediate emergency response.





## COMMUNITY DEVELOPMENT DEPARTMENT

### Eco Gardener Program: Upcoming Classes

The Water Replenishment District (WRD) will offer a number of classes this summer focusing on sustainable landscape design and gardening. The educational opportunities are part of the District's Lillian Kawasaki Eco Gardener Program, which teaches homeowners about the multiple benefits of planting a sustainable garden through a series of in-person and on-demand classes. Classes will be held on various dates throughout the South Bay, including:

- Saturday, July 22- Torrance
- Saturday, July 29- Inglewood



For additional details including time, location, and registration information, please visit the WRD website at <https://www.wrd.org/eco-gardener-program>.

### South Bay Cities Council of Governments (SBCCOG) Housing Education Forum

The SBCCOG will be conducting virtual housing education form on June 22. The forum focuses on Planning for land use and transportation in the South Bay area and is intended to provide



**SOUTH BAY CITIES**  
COUNCIL OF GOVERNMENTS

an understanding of housing issues in the region from multiple perspectives. The Housing Education Form offers workshops and online resources to encourage informed discussions about residential density and design that support a full range of housing options in the South Bay and help decision-makers and stakeholders understand optimal ways to meet regional housing needs. Registration details are available by visit the following link: <https://us06web.zoom.us/meeting/register/tZwud--oqDwvHtzE70lgyO5PZzMqEl3XTUN7>



## Senior Services in the South Bay

The Community Development Department would like to remind the City's senior community of services to seniors available through the South Bay Cities Council of Governments (SBCCOG). The SBCCOG supports awareness of various programs that serve the community's seniors and promote an age-friendly South Bay. Programs include, but are not limited to, senior scam stopper resources, disaster preparedness, and the Senior Services

Working Group, which is a collaborative effort of bringing together the various service providers to address issues impacting quality of life for older adults in the South Bay. For more information on services, please visit the SBCCOG website at <https://southbaycities.org/programs/senior-services-in-the-south-bay/>.



## Planning Commission Meeting Agenda

See attached draft Planning Commission meeting agenda for June 27.

### Attachments:

June 27, 2023 Draft Planning Commission Meeting Agenda – Page 87

## RECREATION AND PARKS DEPARTMENT



### First Summer Concert Rocked

Approximately 400 people rocked out at the Ken Dyda Civic Center on June 17 to help celebrate the City's 50<sup>th</sup> anniversary with an afternoon of live music. This summer's Concert in the Park series is inspired by music from the decades since the City was incorporated in 1973. The band Remix played legendary '80s and '90s funk and R&B hits from 4 p.m. to 6 p.m. Attendees enjoyed a food truck and beer and wine sold by the PV Sunset Rotary. This free event also featured inflatables, crafts, and giveaways!





## Start the Countdown: Fourth of July Lights Up the Night in 2 Weeks

The annual Fourth of July Celebration at the Ken Dyda Civic Center has a major new added feature and a new time this year. In addition to the traditional live music, food vendors, inflatables, rides, and family fun, this year's celebration will feature a spectacular patriotic drone light show in honor of the City's 50<sup>th</sup> anniversary. Event hours will be from 3 p.m. to 9 p.m.

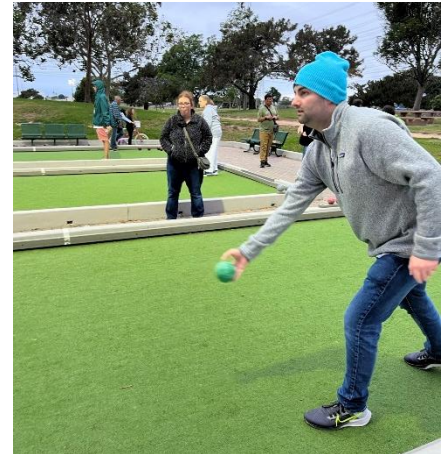
## REACH Springs into Action

The REACH program serves the social and recreational needs of youths and adults with developmental disabilities and is back at Hesse Park for in-person activities. To RSVP for REACH activities or if you have questions, please email [reach@rpvca.gov](mailto:reach@rpvca.gov).



## For the Love of Bocce!

With longer days and warmer weather on the horizon, REACH has been able to return to their favorite outdoor activity, Bocce. This popular lawn game originated in Italy but has long since been a hit in the USA. This game requires concentration and athleticism while being simultaneously fun and relaxing! It's a healthy way to spend the evening with friends. REACH looks forward to many more bocce sessions ahead!



Upcoming REACH excursions include an afternoon with the Los Angeles Dodgers on June 24 and a trip to 123 Farms for their annual Lavender Festival on July 8!





## RPV Volunteer Program

Thank you to the volunteers that assisted staff with the June 17 Concert in the Park! The City is looking for volunteers to assist with the annual 4<sup>th</sup> of July celebration to be held at the Ken Dyda Civic Center on July 4. Please RSVP to [volunteer@rpvca.gov](mailto:volunteer@rpvca.gov). Thank you!



## Ferrari Car Rally

A private car rally featuring approximately 50 classic Ferraris will take place on the main lawn at the Ken Dyda Civic Center on June 24 from 7 a.m. to 3 p.m.



## Parks Weekend Attendance Report

Below is a public usage summary report for the past weekend and holiday.

### HESSE PARK - walking paths, playground, and grass area

Total park attendance: 835

### RYAN PARK - walking paths, playground, basketball court, and grass area

Total park attendance: 913

### EASTVIEW PARK - walking paths, playground, dog park, and grass area

Total park attendance: 467

### LOWER POINT VICENTE PARK - walking paths and grass area

Total park attendance: 5,630

**Total Weekend Attendance: 7,845**



As temperatures warm up and the summer season starts, Staff continues to educate the public about the importance of staying hydrated.

### **Preserve and Beach Weekend Activity June 17-18, 2023**

Parking Citations Issued: 21

Public Contacts: 794

Violations observed: 16

#### **Abalone Cove Reserve:**

On June 18, Staff removed two instances of graffiti along the rock walls, pictured below. Both are located at the bottom of Abalone Cove Trail.







On June 19, Staff replaced trash cans at various locations as many of these trash cans sustained damage over the last year as a result of vehicle crashes, or strong wind events.



### **Alta Vicente Reserve:**

On June 20, Staff temporarily closed Prickly Pear Trail while Los Angeles County Fire Department conducted a helicopter exercise at Ken Dyda Civic Center.



## Portuguese Bend Reserve:

Staff continues to observe snake sightings throughout the Preserve, including a California striped racer and a Pacific Gopher snake seen in Portuguese Bend Reserve on June 16.



Beginning June 8, Rangers coordinated and directed brush clearance of trails in the Portuguese Bend Reserve by landscaping crews. Trails prioritized for clearing include trails historically used as fire roads for vehicular access by public safety agencies and higher-use trails. Due to the proliferation of non-native vegetation caused by the winter storms, trail clearing will continue into the Fall. A total of 4.51 miles of trails were cleared on the following trails:

- Burma Road Trail
- Ishibashi Farm Trail
- Panorama Trail
- Klondike Canyon Trail
- Peppertree Trail (partial)
- Vanderlip Trail (partial)
- Kelvin Canyon Trail (partial)
- Gary's Gulch Trail (partial)



## ADMINISTRATIVE REPORT

June 21, 2023


Page 37

OSM Staff will continue to clear debris and inspect overgrowth along trails.






# June 2023

Sunday	Monday	Tuesday	Wednesday	Thursday	Friday	Saturday
				1 7:00 pm – Finance Advisory Committee Special Meeting (Hybrid In-Person/Virtual Meeting) @ City Hall Community Room	2	3
4	5	6 7:00 pm – City Council Meeting (Hybrid In-Person/Virtual Meeting) @ Hesse Park	7	8 <del>7:00 pm – Finance Advisory Committee (Hybrid In-Person/Virtual Meeting) @ City Hall Community Room</del> <b>CANCELLED</b>	9	10
11	12	13 <del>7:00 pm – Planning Commission Meeting (Hybrid In-Person/Virtual Meeting) @ Hesse Park</del> <b>CANCELLED</b>	14 5:30 pm – ACLAD Board Meeting (Virtual Meeting)	15 6:00 pm – Emergency Preparedness Committee (Hybrid In-Person/Virtual Meeting) @ Hesse Park McTaggart Hall	16	17
18	19 <del>6:00 pm – IMAC Meeting (Hybrid In-Person/Virtual Meeting) @ City Hall Community Room</del> <b>CANCELLED</b> 	20 7:00 pm – City Council Meeting (Hybrid In-Person/Virtual Meeting) @ Hesse Park	21 12:00 pm – Mayor’s Lunch @ The Original Red Onion (Mayor Ferraro) 1:30 pm – Sanitation District Meeting (Mayor Ferraro)	22 6:00pm – Civic Center Advisory Committee (Hybrid In-Person/Virtual Meeting) @ City Hall Community Room	23 8:00 am – Mayor’s Breakfast @ Trump National Golf Club (Mayor Ferraro/ Councilmember Bradley)	24
25	26 5:00 pm-Klondike Canyon Meeting @ Ladera Linda Community Center 6:00 pm – TSC Meeting (Hybrid In-Person/Virtual Meeting) @ City Hall Community Room	27 7:00 pm – Planning Commission Meeting (Hybrid In-Person/Virtual Meeting) @ Hesse Park	28	29	30	



# July 2023

Sunday	Monday	Tuesday	Wednesday	Thursday	Friday	Saturday
						1
2	3	4	5	6	7	8
		 <b>CITY HALL CLOSED</b>	7:00 pm – City Council Meeting (Hybrid In-Person/Virtual Meeting) @ Hesse Park <b>CANCELLED</b>			
9	10	11	12	13	14	15
		7:00 pm – Planning Commission Meeting (Hybrid In-Person/Virtual Meeting) @ Hesse Park	5:30 pm – ACLAD Board Meeting (Virtual Meeting)	7:00 pm – Finance Advisory Committee (Hybrid In-Person/Virtual Meeting) @ City Hall Community Room	8:00 am – Mayor's Breakfast @ Terranea Resort (Mayor Ferraro/ Councilmember Seo)	
16	17	18	19	20	21	22
	6:00 pm – IMAC Meeting (Hybrid In-Person/Virtual Meeting) @ City Hall Community Room	7:00 pm – City Council Meeting (Hybrid In-Person/Virtual Meeting) @ Hesse Park	12:00 pm – Mayor's Lunch @ The Original Red Onion (Mayor Ferraro) 1:30 pm – Sanitation District Meeting (Mayor Ferraro)	6:30 pm – Emergency Preparedness Committee (Hybrid In-Person/Virtual Meeting) @ City Hall Community Room		
23	24	25	26	27	28	29
	5:00 pm – Klondike Canyon Meeting @ Ladera Linda Community Center 6:00 pm – TSC Meeting (Hybrid In-Person/Virtual Meeting) @ City Hall Community Room	7:00 pm – Planning Commission Meeting (Hybrid In-Person/Virtual Meeting) @ Hesse Park		6:00pm – Civic Center Advisory Committee (Hybrid In-Person/Virtual Meeting) @ City Hall Community Room		
30	31					





# August 2023

Sunday	Monday	Tuesday	Wednesday	Thursday	Friday	Saturday
		1 7:00 pm – City Council Meeting (Hybrid In-Person/Virtual Meeting) @ Hesse Park	2	3	4	5
6	7	8 7:00 pm – Planning Commission Meeting (Hybrid In-Person/Virtual Meeting) @ Hesse Park	9 5:30 pm – ACLAD Board Meeting (Virtual Meeting)	10 7:00 pm – Finance Advisory Committee (Hybrid In-Person/Virtual Meeting) @ City Hall Community Room	11	12
13	14	15 7:00 pm – City Council Meeting (Hybrid In-Person/Virtual Meeting) @ Hesse Park	16 12:00 pm – Mayor’s Lunch @ The Original Red Onion (Mayor Ferraro) 1:30 pm – Sanitation District Meeting (Mayor Ferraro)	17 6:30 pm – Emergency Preparedness Committee (Hybrid In-Person/Virtual Meeting) @ City Hall Community Room	18	19
20	21 <del>6:00 pm – IMAC Meeting (Hybrid In-Person/Virtual Meeting) @ City Hall Community Room</del> <b>CANCELLED</b>	22 7:00 pm – Planning Commission Meeting (Hybrid In-Person/Virtual Meeting) @ Hesse Park	23	24 6:00pm – Civic Center Advisory Committee (Hybrid In-Person/Virtual Meeting) @ City Hall Community Room	25 8:00 am—Mayor’s Breakfast @ Trump National Golf Club (Mayor Ferraro/ Councilmember Alegria)	26
27	28 5:00 pm-Klondike Canyon Meeting @ Ladera Linda Community Center 6:00 pm – TSC Meeting (Hybrid In-Person/Virtual Meeting) @ City Hall Community Room	29	30	31		

# TENTATIVE AGENDAS

*Agenda items listed below will be presented to the City Council for their consideration*

DEPARTMENT	AGENDA SECTION	AGENDA TITLE	ESTIMATED TIME
<b>July 5, 2023</b>			
<b>CLOSED SESSION – 6:00 PM</b>			
	CLOSED SESSION-	NO ITEMS SCHEDULED AT THIS TIME	
		Canceled	
<b>July 18, 2023</b>			
<b>CLOSED SESSION - 6:00 PM</b>			
	CLOSED SESSION	NO ITEMS SCHEDULED AT THIS TIME	
<b>REGULAR MEETING - 7:00 PM</b>			<b>4:15</b>
ADMIN	CONSENT CALENDAR	Minutes	1:00
ADMIN	CONSENT CALENDAR	Consider award of PSA to AMS.Net for Cisco Cloud Calling Services	
FINANCE	CONSENT CALENDAR	Warrant Register	
FINANCE	CONSENT CALENDAR	Treasury Reports (CC and IA)	
CDD	CONSENT CALENDAR	Consider Code Amendment to clarify numerical section headings of Chapter 15.18.030 (Building Code)	
REC&PARKS	CONSENT CALENDAR	2022 PVPLC Annual Report	
PUBLIC WORKS	PUBLIC HEARING	Consider Citywide Landscape Lighting and Maintenance District Levy for FY23/24	0:15
ALL DEPTS	REGULAR BUSINESS	Consider work plans and biannual reports from City Advisory Boards and Planning Commission	0:30
ADMIN	REGULAR BUSINESS	Consider a position on the Taxpayers Protection and Accountability Act	0:30
ADMIN	REGULAR BUSINESS	Consider membership with Southern California Association of Governments (SCAG)	0:15
ADMIN	REGULAR BUSINESS	Consider establishing a Youth Advisory Council	0:15
PUBLIC WORKS	REGULAR BUSINESS	Consider Western Avenue Beautification Concept Design	0:30
ADMIN/PUBLIC WORKS	REGULAR BUSINESS	Consider code amendments to RPVMC Ch. 12.18 (Wireless Facilities)	0:30
<b>August 1, 2023</b>			
<b>CLOSED SESSION - 6:00 PM</b>			
	CLOSED SESSION	NO ITEMS SCHEDULED AT THIS TIME	
<b>REGULAR MEETING - 7:00 PM</b>			<b>3:15</b>
ADMIN	CONSENT CALENDAR	Minutes	1:00
FINANCE	CONSENT CALENDAR	Warrant Register	
PUBLIC WORKS	CONSENT CALENDAR	PVIC Water Damage Restoration Report	
CDD	REGULAR BUSINESS	Consider initiating code amendments to RPVMC Ch. 17.04.040 (Building height clarifications)	0:15
FINANCE	REGULAR BUSINESS	Consider revision of pension guidelines	0:15
ADMIN	REGULAR BUSINESS	Receive a report on Navy Surplus property	0:15
ADMIN	REGULAR BUSINESS	Receive an update from SCE on Grandview Estates power outage/action plans	0:30
ADMIN	REGULAR BUSINESS	Reassess Encroachment Permit Issuance Protocols	0:30
<b>August 15, 2023</b>			
<b>CLOSED SESSION - 6:00 PM</b>			
	CLOSED SESSION	NO ITEMS SCHEDULED AT THIS TIME	
<b>REGULAR MEETING - 7:00 PM</b>			<b>4:00</b>

# TENTATIVE AGENDAS

*Agenda items listed below will be presented to the City Council for their consideration*

DEPARTMENT	AGENDA SECTION	AGENDA TITLE	ESTIMATED TIME
ADMIN	CONSENT CALENDAR	Minutes	1:00
ADMIN	CONSENT CALENDAR	Consider award of PSA for Hesse Park Audio Video upgrades	
FINANCE	CONSENT CALENDAR	Warrant Register	
FINANCE	CONSENT CALENDAR	Treasury Report (CC) (IA)	
CDD	PUBLIC HEARING	Consider code amendments to RPVMC Ch. 17.76 (Antennas)	0:30
ADMIN	REGULAR BUSINESS	Consider program to address high fire vegetation in canyons by working with neighboring cities/homeowners to address	0:30
PW/CDD	REGULAR BUSINESS	Report on citywide beautification projects including Lower Hesse and medians	0:30
PUBLIC WORKS	REGULAR BUSINESS	Consider a PSA for landslide monitoring services	0:30
PUBLIC WORKS	REGULAR BUSINESS	Consider a grant program with PVPLC to match funds to promote acacia removal throughout City	0:30
<b>September 5, 2023</b>			
<b>CLOSED SESSION - 6:00 PM</b>			
	CLOSED SESSION	NO ITEMS SCHEDULED AT THIS TIME	
<b>REGULAR MEETING - 7:00 PM</b>			<b>2:00</b>
ADMIN	CONSENT CALENDAR	Minutes	1:00
FINANCE	CONSENT CALENDAR	Warrant Register	
ADMIN	REGULAR BUSINESS	Consider an Agreement and Plan between the City and PVPLC for use of UPV for a native plant farm	0:30
<b>September 19, 2023</b>			
<b>CLOSED SESSION - 6:00 PM</b>			
	CLOSED SESSION	NO ITEMS SCHEDULED AT THIS TIME	
<b>REGULAR MEETING - 7:00 PM</b>			<b>2:30</b>
ADMIN	CONSENT CALENDAR	Minutes	1:00
FINANCE	CONSENT CALENDAR	Warrant Register	
FINANCE	CONSENT CALENDAR	Treasury Report (CC) (IA)	
PUBLIC WORKS	REGULAR BUSINESS	Abalone Cove Sewer Maintenance Fee Options	1:00
<b>FUTURE AGENDA ITEMS</b>			<b>0:15</b>
<u>Request Date:</u>	<u>Requested By:</u>	<u>Item:</u>	<u>Scheduled Date:</u>
7/16/2019	Dyda	Abalone Cove Sewer Maintenance Fee Options	9/19/2023
7/21/2020	Alegria	Reassess Encroachment Permit Issuance Protocols	8/1/2023
12/21/2021	Bradley	Status report on non native water entering Portuguese Bend landslide	10/3/2023
4/19/2022	Alegria	Stormwater/Drainage Asset Management Update	TBD
9/6/2022	Cruikshank	Consider a grant program with PVPLC to match funds to promote acacia removal throughout City	8/15/2023
9/6/2022	Cruikshank	Consider program to address high fire vegetation in canyons by working with neighboring cities/homeowners to address	8/15/2023
9/20/2022	Ferraro	Report on citywide beautification projects including Lower Hesse and medians	8/15/2023
5/2/2023	Cruikshank	Consider a position on the Taxpayers Protection and Accountability Act	7/18/2023



## TENTATIVE AGENDAS

*Agenda items listed below will be presented to the City Council for their consideration*

DEPARTMENT	AGENDA SECTION	AGENDA TITLE	ESTIMATED TIME
5/2/2023	Alegria	Consider establishing a Youth Advisory Council	7/18/2023
6/6/2023	Cruikshank	Consider future support services for firegrazers	11/21/2023
6/20/2023	Cruilshank	Receive a report on Navy Surplus property	8/1/2023
CITY MANAGER REPORT			0:15

RPVtv Cox 33 / Frontier 38 Programming Schedule Guide Schedule - 6/25/23- 7/1/23

	Sunday	Monday	Tuesday	Wednesday	Thursday	Friday	Saturday
	June 25, 2023	June 26, 2023	June 27, 2023	June 28, 2023	June 29, 2023	June 30, 2023	July 1, 2023
6:00 AM - 6:30 AM	Fitness Programming	Fitness Programming	Fitness Programming	Fitness Programming	Fitness Programming	Fitness Programming	Fitness Programming
6:30 AM - 7:00 AM	Fitness Programming	Fitness Programming	Fitness Programming	Fitness Programming	Fitness Programming	Fitness Programming	Fitness Programming
7:00 AM - 7:30 AM	RPV City Talk	RPV City Talk	RPV City Talk	RPV City Talk	RPV City Talk	RPV City Talk	RPV City Talk
7:30 AM - 8:00 AM	Around the Peninsula	Around the Peninsula	Around the Peninsula	Around the Peninsula	Around the Peninsula	Around the Peninsula	Around the Peninsula
8:00 AM - 8:30 AM	Peninsula Seniors Connections	Peninsula Seniors Connections	Peninsula Seniors Connections	Peninsula Seniors Connections	Peninsula Seniors Connections	Peninsula Seniors Connections	Peninsula Seniors Connections
8:30 AM - 9:00 AM							
9:00 AM - 9:30 AM	Fitness Programming	Fitness Programming	Fitness Programming	Fitness Programming	Fitness Programming	Fitness Programming	Fitness Programming
9:30 AM - 10:00 AM	Fitness Programming	Fitness Programming	Fitness Programming	Fitness Programming	Fitness Programming	Fitness Programming	Fitness Programming
10:00 AM -10:30AM	Lectures with Lianne	Lectures with Lianne	Lectures with Lianne	Lectures with Lianne	Lectures with Lianne	Lectures with Lianne	Lectures with Lianne
10:30 AM - 11 AM							
11:00 AM -11:30 AM	RPV City Talk	RPV City Talk	RPV City Talk	RPV City Talk	RPV City Talk	RPV City Talk	RPV City Talk
11:30 AM -12:00PM	Around the Peninsula	Around the Peninsula	Around the Peninsula	Around the Peninsula	Around the Peninsula	Around the Peninsula	Around the Peninsula
12:00 PM -12:30PM	Space Shuttle Endeavour's Last Mission	Space Shuttle Endeavour's Last Mission	Space Shuttle Endeavour's Last Mission	Space Shuttle Endeavour's Last Mission	Space Shuttle Endeavour's Last Mission	Space Shuttle Endeavour's Last Mission	Space Shuttle Endeavour's Last Mission
12:30 PM - 1:00PM							
1:00 PM - 1:30PM	Peninsula Seniors Connections	Peninsula Seniors Connections	Peninsula Seniors Connections	Peninsula Seniors Connections	Peninsula Seniors Connections	Peninsula Seniors Connections	Peninsula Seniors Connections
1:30 PM - 2:00PM							
2:00 PM - 2:30PM	Fitness Programming	Fitness Programming	Fitness Programming	Fitness Programming	Fitness Programming	Fitness Programming	Fitness Programming
2:30 PM - 3:00PM	Fitness Programming	Fitness Programming	Fitness Programming	Fitness Programming	Fitness Programming	Fitness Programming	Fitness Programming
3:00 PM - 3:30PM	RPV City Talk	RPV City Talk	RPV City Talk	RPV City Talk	RPV City Talk	RPV City Talk	RPV City Talk
3:30 PM - 4:00 PM	Around the Peninsula	Around the Peninsula	Around the Peninsula	Around the Peninsula	Around the Peninsula	Around the Peninsula	Around the Peninsula
4:00 PM - 4:30PM	RPV City Talk	RPV City Talk	RPV City Talk	RPV City Talk	RPV City Talk	RPV City Talk	RPV City Talk
4:30 PM - 5:00PM	Around the Peninsula	Around the Peninsula	Around the Peninsula	Around the Peninsula	Around the Peninsula	Around the Peninsula	Around the Peninsula
5:00 PM - 5:30PM	Playing the Field- Local Edition	Playing the Field- Local Edition	Playing the Field- Local Edition	Playing the Field- Local Edition	Playing the Field- Local Edition	Playing the Field- Local Edition	Playing the Field- Local Edition
5:30 PM - 6:00PM	Fitness Programming	Fitness Programming	Fitness Programming	Fitness Programming	Fitness Programming	Fitness Programming	Fitness Programming
6:00 PM - 6:30PM	RPV City Talk	RPV City Talk	RPV City Talk	RPV City Talk	RPV City Talk	RPV City Talk	RPV City Talk
6:30 PM - 7:00PM	RPV City Talk	RPV City Talk	RPV City Talk	RPV City Talk	RPV City Talk	RPV City Talk	RPV City Talk
7:00 PM - 7:30PM	John Fer, USAF Pilot- vietnam pow	John Fer, USAF Pilot- vietnam pow	The City of Rancho Palos Verdes LIVE Planning Commission Meeting June 27, 2023	John Fer, USAF Pilot- vietnam pow	John Fer, USAF Pilot- vietnam pow	John Fer, USAF Pilot- vietnam pow	John Fer, USAF Pilot- vietnam pow
7:30 PM - 8:00PM							
8:00 PM - 8:30PM	Around the Peninsula	Around the Peninsula		Around the Peninsula	Around the Peninsula	Around the Peninsula	Around the Peninsula
8:30 PM - 9:00PM	Playing the Field- Local Edition	Playing the Field- Local Edition		Playing the Field- Local Edition	Playing the Field- Local Edition	Playing the Field- Local Edition	Playing the Field- Local Edition
9:00 PM - 9:30PM	RPV City Talk	RPV City Talk		RPV City Talk	RPV City Talk	RPV City Talk	RPV City Talk
9:30 PM - 10:00PM	RPV City Talk	RPV City Talk		RPV City Talk	RPV City Talk	RPV City Talk	RPV City Talk
10:00 PM -10:30PM	Lectures with Lianne	Lectures with Lianne		Lectures with Lianne	Lectures with Lianne	Lectures with Lianne	Lectures with Lianne
10:30 PM -11:00PM							
11:00 PM -11:30PM	Community Announcements	Community Announcements		Community Announcements	Community Announcements	Community Announcements	Community Announcements
11:30 PM -12:00 AM	Community Announcements	Community Announcements		Community Announcements	Community Announcements	Community Announcements	Community Announcements
12:00 AM - 1:00 AM	Community Announcements	Community Announcements	Community Announcements	Community Announcements	Community Announcements	Community Announcements	Community Announcements

	Sunday	Monday	Tuesday	Wednesday	Thursday	Friday	Saturday
	June 25, 2023	June 26, 2023	June 27, 2023	June 28, 2023	June 29, 2023	June 30, 2023	July 1, 2023
6:00 AM - 6:30 AM							
6:30 AM - 7:00 AM							
7:00 AM - 7:30 AM	The City of Rancho Palos Verdes City Council Meeting June 20, 2023	The City of Rancho Palos Verdes City Council Meeting June 20, 2023	The City of Rancho Palos Verdes City Council Meeting June 20, 2023	The City of Rancho Palos Verdes City Council Meeting June 20, 2023	The City of Rancho Palos Verdes City Council Meeting June 20, 2023	The City of Rancho Palos Verdes City Council Meeting June 20, 2023	The City of Rancho Palos Verdes City Council Meeting June 20, 2023
7:30 AM - 8:00 AM							
8:00 AM - 8:30 AM							
8:30 AM - 9:00 AM							
9:00 AM - 9:30 AM							
9:30 AM - 10:00 AM							
10:00 AM -10:30AM							
10:30 AM -11:00AM							
11:00 AM -11:30 AM	The City of Rancho Palos Verdes Planning Commission Meeting May 23, 2023	The City of Rancho Palos Verdes Planning Commission Meeting May 23, 2023	The City of Rancho Palos Verdes Planning Commission Meeting May 23, 2023	The City of Rancho Palos Verdes Planning Commission Meeting May 23, 2023	The City of Rancho Palos Verdes Planning Commission Meeting June 27, 2023	The City of Rancho Palos Verdes Planning Commission Meeting June 27, 2023	The City of Rancho Palos Verdes Planning Commission Meeting June 27, 2023
11:30 AM -12:00PM							
12:00 PM -12:30PM							
12:30 PM - 1:00PM							
1:00 PM - 1:30PM							
1:30 PM - 2:00PM							
2:00 PM - 2:30PM	Community Announcements	Community Announcements	Community Announcements	Community Announcements	Community Announcements	Community Announcements	Community Announcements
2:30 PM - 3:00PM	Community Announcements	Community Announcements	Community Announcements	Community Announcements	Community Announcements	Community Announcements	Community Announcements
3:00 PM - 3:30PM							
3:30 PM - 4:00PM	Community Announcements	Community Announcements	Community Announcements	Community Announcements	Community Announcements	Community Announcements	Community Announcements
4:00 PM - 4:30PM							
4:30 PM - 5:00PM	Community Announcements	Community Announcements	Community Announcements	Community Announcements	Community Announcements	Community Announcements	Community Announcements
5:00 PM - 5:30PM							
5:30 PM - 6:00PM	Community Announcements	Community Announcements	Community Announcements	Community Announcements	Community Announcements	Community Announcements	Community Announcements
6:00 PM - 6:30PM							
6:30 PM - 7:00PM	Community Announcements	Community Announcements	Community Announcements	Community Announcements	Community Announcements	Community Announcements	Community Announcements
7:00 PM - 7:30PM							
7:30 PM - 8:00PM	Community Announcements	Community Announcements	The City of Rancho Palos Verdes LIVE Planning Commission Meeting June 27, 2023	Community Announcements	Community Announcements	Community Announcements	Community Announcements
8:00 PM - 8:30PM	The City of Rancho Palos Verdes City Council Meeting June 20, 2023	Community Announcements		The City of Rolling Hills Estates City Council Meeting	The City of Rancho Palos Verdes City Council Meeting June 20, 2023	The City of Rolling Hills Estates City Council Meeting	The City of Rancho Palos Verdes City Council Meeting June 20, 2023
8:30 PM - 9:00PM							
9:00 PM - 9:30PM		Community Announcements					
9:30 PM - 10:00PM							
10:00 PM -10:30PM		Community Announcements					
10:30 PM -11:00PM							
11:00 PM -11:30PM		Community Announcements					
11:30 PM -12:00 AM							
12:00 AM - 1:00 AM	Community Announcements						
1:00 AM - 6:00 AM							

Comments or questions? Please email us at [RPVtv@rpvca.gov](mailto:RPVtv@rpvca.gov)





**LOS ANGELES COUNTY SHERIFF'S DEPARTMENT- LOMITA STATION  
REPORTED CRIMES & ARRESTS BETWEEN (06/04/2023 - 06/10/2023)**



**LOMITA:**

CRIME	FILE #	RD	DATE	TIME	LOCATION-PUBLIC	METHOD OF ENTRY	LOSS-PUBLIC	ADDITIONAL INFORMATION-PUBLIC
GRAND THEFT (AUTO)	23-01904	1713	6/4/2023	0007	1800 BLK 259TH ST	N/A	WHITE 2008 FORD ECONO 150 VAN	SUSPECT(S) UNKNOWN
ASSAULT	23-01918	1710	6/4/2023	2030	24000 BLK ESHELMAN AVE	N/A	NO LOSS	S1 FW/40-50/503/THIN BUILD/BLN WRG A WHITE CUT OFF AND DIRTY BLUE JEANS. S2 FW/40-50/503-504/THIN BUILD/BLN WRG A BLK SHIRT AND BLUE JEANS.
BURGLARY (TRAILER)	23-01930	1713	6/2/2023-6/5/2023	1530-0630	26000 BLK WESTERN AVE	DOOR LOCK BROKEN	BICYCLES	SUSPECT(S) UNKNOWN
BURGLARY (RESIDENTIAL)	23-01983	1710	6/9/2023	1323	2200 BLK 243RD ST	UPSTAIRS BALCONY SLIDING GLASS DOOR	UNK AT TIME OF REPORT	S1 MH WRG ALL BLK AND A BUCKET HAT. S2 MH WRG A YELLOW VEST AND A BUCKET HAT. SUSPS WERE SEEN LEAVING LOC IN A SILVER SUV.
BURGLARY (VEHICLE)	23-01993	1713	6/8/2023-6/10/2023	1500-1000	26000 BLK APPIAN WAY	REAR WINDSHIELD SMASHED	MISC CLOTHING, SHOES	SUSPECT(S) UNKNOWN
GRAND THEFT (AUTO)	23-01994	1713	6/8/2023-6/10/2023	1700-1230	25000 BLK VIANA AVE	N/A	GRY 2012 MAZDA 6	SUSPECT(S) UNKNOWN
TOTAL ARRESTS: ANNOY OR MOLEST A MINOR - 1, BATTERY - 1, DOMESTIC VIOLENCE - 3, DRUGS - 3, VANDALISM - 1, VEHICLE VIOLATIONS - 3, VIOLATION OF A COURT ORDER - 1, WARRANTS - 2								

**RANCHO PALOS VERDES:**

CRIME	FILE #	RD	DATE	TIME	LOCATION-PUBLIC	METHOD OF ENTRY	LOSS-PUBLIC	ADDITIONAL INFORMATION-PUBLIC
BURGLARY (VEHICLE)	23-01910	1744	6/4/2023	0046-1000	4200 BLK PALOS VERDES DR EAST	REAR WINDSHIELD SHATTERED	BACKPACK, TENT, SLEEPING BAG	SUSPECT(S) UNKNOWN
BURGLARY (VEHICLE)	23-01913	1740	6/4/2023	1127-1245	5900 BLK PALOS VERDES DR SOUTH	DRIVER SIDE KEYHOLE DAMAGED	PURSE, WALLET, CREDIT CARDS, CDL	SUSPECT(S) UNKNOWN
GRAND THEFT (AUTO)	23-01940	1746	6/5/2023-6/6/2023	2200-0600	29000 BLK ENROSE AVE	N/A	WHITE 2016 HYUNDAI SONATA	SUSPECT(S) UNKNOWN

BURGLARY (VEHICLE)	23-01951	1741	6/4/2023	1200- 1300	5900 PALOS VERDES SOUTH	FRONT DRIVER SIDE KEYHOLE DAMAGED	US CURRENCY, MISC CREDIT AND DEBIT CARDS, CELLPHONE HOLDER	SUSPECT(S) UNKNOWN
BURGLARY (VEHICLE)	23-01960	1738	6/7/2023	1730- 1830	30000 BLK HAWTHORNE BLVD	FRONT PASSENGER SIDE WINDOW SHATTERED	PURSE, WALLET, US CURRENCY, CDL, MEMBERSHIP CARDS,	SUSPECT(S) UNKNOWN
BURGLARY (BUSINESS)	23-01965	1746	6/7/2023- 6/8/2023	1700- 1530	28000 BLK WESTERN AVE	SMALL FRONT GLASS WINDOW BROKEN	MISC CHILDREN'S CLOTHING	SUSPECT(S) UNKNOWN
ASSAULT	23-01986	1738	6/9/2023	1731	31000 BLK HAWTHORNE BLVD	N/A	NO LOSS	1 SUSPECT ARRESTED
BURGLARY (VEHICLE)	23-01996	1738	6/10/2023	1030- 1203	31000 BLK PALOS VERDES DR WEST	DRIVER SIDE DOOR LOCK PUNCHED	WALLET, CDL, MISC CREDIT AND DEBIT CARDS, MEDICAL CARD, MEMBERSHIP CARD, LIBRARY CARD, US CURRENCY	SUSPECT(S) UNKNOWN
TOTAL ARRESTS: ARSON - 1, DRUGS - 1, FELON IN POSSESSION OF A FIREARM - 1, VEHICLE VIOLATIONS - 1, WARRANTS - 1								

**ROLLING HILLS:**

CRIME	FILE #	RD	DATE	TIME	LOCATION-PUBLIC	METHOD OF ENTRY	LOSS-PUBLIC	ADDITIONAL INFORMATION-PUBLIC
NO CRIMES DURING THIS TIME								
NO ARRESTS DURING THIS TIME								

**ROLLING HILLS ESTATES:**

CRIME	FILE #	RD	DATE	TIME	LOCATION-PUBLIC	METHOD OF ENTRY	LOSS-PUBLIC	ADDITIONAL INFORMATION-PUBLIC
SHOPLIFTING	23-01908	1724	6/9/2023	0850	PENINSULA CTR	OPEN FOR BUSINESS	MISC ITEMS	SUSPECT FW/H/25-35/503-505/120-140. SUSP WAS SEEN LEAVING LOC IN A 2009 BEIGE VOLKSWAGEN.

SHOPLIFTING	23-01932	1724	6/5/2023	2105	900 BLK SILVER SPUR RD	OPEN FOR BUSINESS	LOTION, EYE DROPS, BEVERAGE	SUSPECT MW/30'S/600/THIN-MEDIUM BUILD/BLK HAIR WRG A RED JACKET W/ WHITE SLEEVES AND BLK PANTS. SUSP WAS SEEN LEAVING LOC IN A NEWER MODEL WHITE 4 DR SEDAN POSSIBLY A MAZDA.
SHOPLIFTING	23-01959	1724	6/7/2023	1626	900 BLK SILVER SPUR RD	OPEN FOR BUSINESS	MISC COSMETIC ITEMS	S1 FEMALE/500-505/210-220 WRG A LONG PEACH COLORED DRESS W/ BLK SLEEVES. S2 FEMALE/500-505/170-180 WRG A LONG BLK DRESS W/ A GRY CARDIGAN SWEATER.
BURGLARY (RESIDENTIAL)	23-02000	1721	6/9/2023-6/10/2023	1800-1630	PEACOCK LN	SECOND FLOOR SLIDING GLASS DOOR SHATTERED	JEWELRY	SUSPECT(S) UNKNOWN
TOTAL ARRESTS: BRANDISHING AN IMITATION FIREARM - 1								

**SAN PEDRO:**

CRIME	FILE #	RD	DATE	TIME	LOCATION-PUBLIC	METHOD OF ENTRY	LOSS-PUBLIC	ADDITIONAL INFORMATION-PUBLIC
ROBBERY	23-01934	1750	6/5/2023	2215	BANDINI ST/ 2ND ST	N/A	CELLPHONE, CLOTHING	S1 MH/505/THIN BUILD WRG A BLK SKI MASK AND DARK CLOTHING. S2 MH/508/THIN BUILD WRG A BLK SKI MASK AND DARK CLOTHING. S3 MH/511/THIN BUILD WRG A BLK SKI MASK AND DARK CLOTHING. S1 AND S2 WERE ARMED W/ BLK SEMI-AUTOMATIC HANDGUNS.
TOTAL ARRESTS: DRUGS - 1, WARRANTS - 2								

**PVP:**

CRIME	FILE #	RD	DATE	TIME	LOCATION-PUBLIC	METHOD OF ENTRY	LOSS-PUBLIC	ADDITIONAL INFORMATION-PUBLIC
PETTY THEFT (UNLOCKED VEHICLE)	23-01982	1754	6/8/2023	1430-1645	31000 BLK PALOS VERDES DR SOUTH	UNLOCKED VEHICLE	PURSE, WALLET, CDL, MISC CREDIT CARDS	SUSPECT(S) UNKNOWN
NO ARRESTS DURING THIS TIME								

**\*\*Data included in this report is time sensitive and subject to change.**



## PUBLIC RECORDS ACT REQUESTS - TRACKING LOG 2023

DATE OF REQUEST	DATE RECEIVED	REQUESTOR	SUBJECT	ACTION TAKEN
2/8/2023	2/8/2023	Ben Eilenberg	Requesting for All documents referencing the effects of the Portuguese Bend landslide on APN 7572-017-017, All documents referencing the effects of the Portuguese Bend landslide on APN 7572-016-019, All documents referencing the effects of the Portuguese Bend landslide on APN 7572-008-021, All documents referencing the effects of the Portuguese Bend landslide on APN 7572-008-022, All documents referencing the effects of the Portuguese Bend landslide on APN 7572-008-023, All documents referencing the effects of the Portuguese Bend landslide on APN 7572-016-024. All building permits issued by the City of Rancho Palos Verdes for APN 7572-017-017, All building permits issued by the City of Rancho Palos Verdes for APN 7572-016-019, All building permits issued by the City of Rancho Palos Verdes for APN 7572-008-021, All building permits issued by the City of Rancho Palos Verdes for APN 7572-008-022, All building permits issued by the City of Rancho Palos Verdes for APN 7572-008-023, All building permits issued by the City of Rancho Palos Verdes for APN 7572-016-024, All communications with the owners of APN 7572-017-017 from 2000 to the present, All communications with Gretzel Hunt from 2000 to the present, All documents referencing the creation of the Portuguese Bend landslide, All documents referencing the factors contributing to the Portuguese Bend landslide from 2000 to the present, All documents referencing any drainage issues from improvements owned by the City of Rancho Palos Verdes affecting the Portuguese Bend Landslide from 2000 to the present, All documents referencing any drainage issues from improvements maintained by the City of Rancho Palos Verdes affecting the Portuguese Bend Landslide from 2000 to the present, All communications with the Portuguese Bend Community Association regarding the Portuguese Bend landslide from 2000 to the present, All code complaints regarding issues created by the Portuguese Bend landslide from 2000 to the present, All documents referencing the City of Rancho Palos Verdes' policies regarding properties that have shifted from one parcel to another due to the Portuguese Bend landslide, All documents referencing the City of Rancho Palos Verdes' policies regarding demolition permits in Portuguese Bend, All documents referencing complaints to the City of Rancho Palos Verdes regarding the Portuguese Bend Community Association from 2000 to the present, All documents referencing the City of Rancho Palos Verdes' policies regarding buildings on parcels with no permits for the building on that parcel.	2/8/23 AAI Momoli forwarded request to staff. A determination letter was sent on 2/21/23. 3/7/23 First round of production was produced. 3/14/23 Second round of production was produced. 4/4/23 Third round of production produced. 4/19/23 Fourth round of production produced. 5/5/23 Fifth round of production produced. 6/2/23 sixth round of production produced. 6/15/23 extension letter sent.
6/5/2023	6/5/2023	Suzy Sullivan	Requesting any permits or certificates of occupancy related to the Marymount Campus Buildings.	6/5/23 AAI Sisson forwarded request to staff.
6/14/2023	6/14/2023	Howard Williams	Request for copies of bids and bid tabulations associated with the recent Information Technology Services and Support RFP.	6/15/23 AA Zweizig forwarded request to staff.

BARBARA FERRARO, MAYOR  
JOHN CRUIKSHANK, MAYOR PRO TEM  
ERIC ALEGRIA, COUNCILMEMBER  
DAVID L. BRADLEY, COUNCILMEMBER  
PAUL SEO, COUNCILMEMBER

June 19, 2023

Hon. Ara Najarian, Chair  
Members of the Board of Directors  
LA County Metropolitan Transportation Authority  
One Gateway Plaza  
Los Angeles, CA 90012

**Re: C Line/K Line Operating Plan**

On behalf of the City of Rancho Palos Verdes, I write to express support for Los Angeles Metro's recommendation of Option 2- C Line/K Line operating plan.

In 2018, the South Bay Cities Council of Governments supported Motion 28.1 by Supervisor Hahn that approved a 1-year pilot of Alternative C-3. Our region recognizes that there is no longer an opportunity to implement that pilot proposal; however, based on the analysis performed by Metro Staff and public input received, we now support Option 2.

Option 2 creates a K Line that runs from the Expo Line to Redondo Beach and a C Line that operates from Norwalk to the LAX/Metro Transit Center. This newly created north-south corridor not only operates in line with travel patterns in the region, but also supports future planned extensions to Torrance and Hollywood. Option 2 maintains simple routing and continues to provide a one-seat ride to LAX from all C and K Line stations.

For these reasons, we urge the Metro Board of Directors to adopt the Option 2 C Line/K Line operating plan. Should you have any questions, please feel free to contact Public Works Director Ramzi Awwad at (310) 544-5275.

Sincerely,



Barbara Ferraro  
Mayor, City of Rancho Palos Verdes

Cc: Rancho Palos Verdes City Council and City Manager  
Jennifer LaMarque, Field Representative District 4

# C & K Line Operating Plan Update



South Bay Cities  
Council of Governments  
Transportation Committee  
June 12, 2023



# Background: 2018 Board Motion

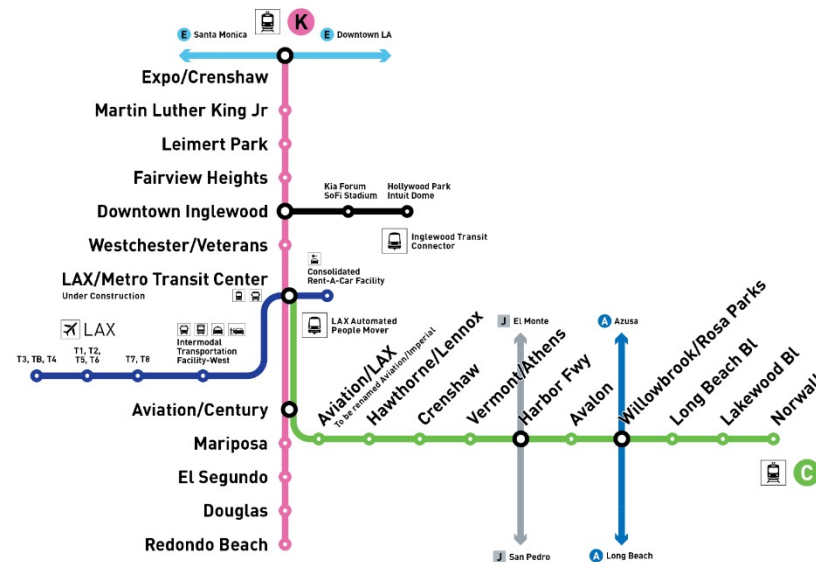
Motion 28.1 from Board Item 2018-0730 in December 2018: that the Board instruct the CEO to:

- A. implement Alternative C-3 for the Crenshaw/LAX -Green Line Operating Plan as a 1-year pilot plan in anticipation of the opening of the LAX People Train and 96th Street Station, maintaining the existing headways on the Green Line;
- B. report back to the Metro Board one (1) year after the pilot is over to reevaluate the ridership and travel demand; and
- C. as a new policy, bring future substantive changes to rail operating plans to the Metro Board for approval as a matter of course, instead of “receive and file.”

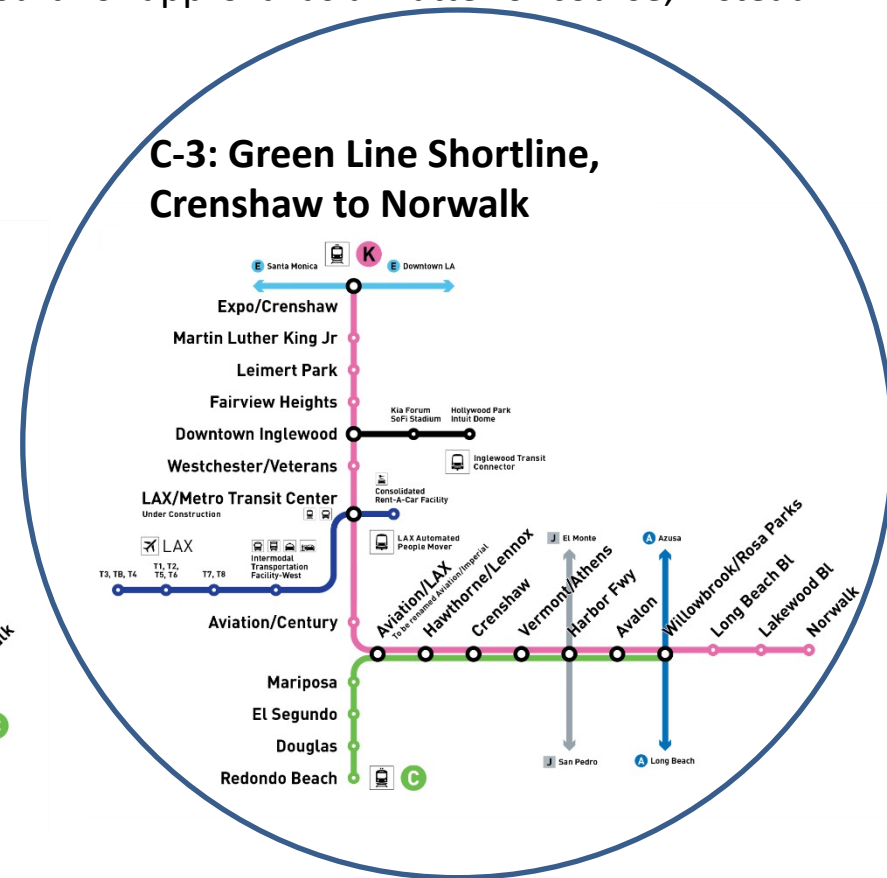
## Option C-1: Crenshaw/Norwalk Interline with Redondo Shuttle



## C-2: Crenshaw/Redondo Interline, Norwalk Shortline



## C-3: Green Line Shortline, Crenshaw to Norwalk



# Operating Plan Update – Four Key Factors

<p><b><u>Project Sequencing</u></b></p> <p>Not able to conduct a one-year pilot before AMC opens.</p>	<p><b><u>Operational Impacts</u></b></p> <p>Challenges of operator hiring. Resources vary by option.</p>
<p><b><u>Regional Travel</u></b></p> <p>Patterns differ by area. NextGen provides key bus connections.</p>	<p><b><u>Future Rail Plans</u></b></p> <p>Torrance and Hollywood extensions, creating a network.</p>

**April 2022: Board directed staff to conduct community outreach to inform the Board in revisiting the C & K Line Operating Plan.**

# Outreach Efforts

- Outreach conducted March-May 2023 once new K Line (opened October 2022) was well established.
- Public input collected through:
  - Online survey (in person/signage at C & K Line Stations, on-line at website, pushed through 120K registered TAP card holders, email lists, The Source, Twitter, Facebook. Survey open Feb 28-Apr 30, 2023. Over 5,700 responses.
  - Public/Stakeholder Meetings (March-May): 4 in-person/virtual public meetings, 2 focus groups; presentations at Metro Service Councils, CAC, CLC; Stakeholders (COGs, LAWA, Municipalities).



# Survey Results

Preference	Option 1 (Alt C-1)	Option 2 (Alt C-2)	Option 3 (Alt C-3)
Metro Rider (Last 12 months) (5,380)	30.9%	47.3%	21.8%
Non-Rider (379)	31.9%	45.6%	22.4%

Preference	Option 1 (Alt C-1)	Option 2 (Alt C-2)	Option 3 (Alt C-3)	All Options are Okay	Other Option Preferred
Recent C or K Line Rider (2,548)	19.5%	37.3%	15.6%	20.3%	7.3%

Option 2 was most popular option, both among the broader group of those surveyed and those who are C & K Line riders, especially when including those who stated any option met their need.

# Survey Results

Ethnicity/ Rider-Non-Rider Option	Latinx/ Hispanic	Black/ African American	White/ Caucasian	Asian American/ Pacific Islander	Native American	Other
Rider	32.7%	11.3%	33.0%	13.7%	0.8%	8.5%
Non-Rider	24.0%	6.1%	43.5%	17.2%	0.0%	9.2%
Option 1 (Alt C-1)	32.6%	31.4%	29.1%	32.7%	30.2%	28.8%
Option 2 (Alt C-2)	41.1%	41.8%	54.4%	46.8%	39.5%	49.4%
Option 3 (Alt C-3)	26.3%	26.8%	16.5%	20.5%	30.2%	21.8%

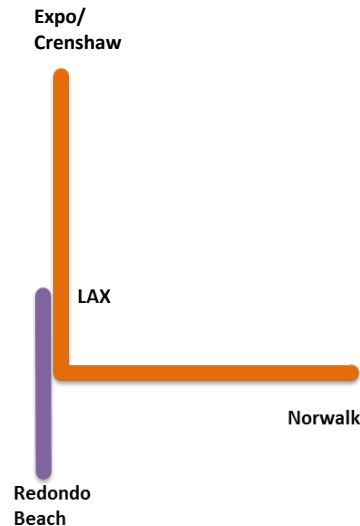
Annual Household Income Rider/Non-Rider	<\$25,000	\$25,000 to <\$50,000	\$50,000 to under \$100,000	\$100,000 and above
Rider	29.8%	18.2%	21.5%	30.4%
Non-Rider	17.9%	13.5%	24.3%	44.3%
Option 1 (Alt. C-1)	32.1%	31.7%	33.2%	27.6%
Option 2 (Alt. C-2)	42.7%	44.7%	46.8%	56.1%
Option 3 (Alt. C-3)	25.2%	23.6%	20.0%	16.3%

When reviewing the survey results with an equity lens, Option 2 consistently ranked highest among all ethnicities and income brackets.

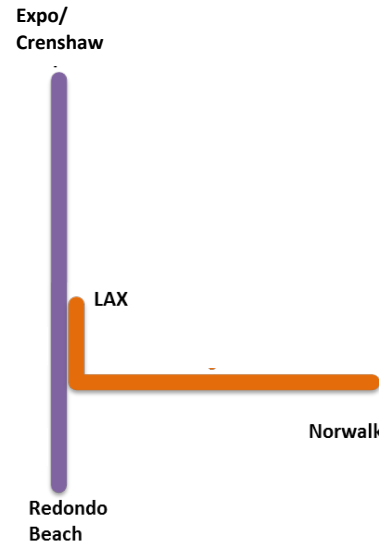
# Evaluation of Options

Evaluation Criteria	Option 1 (Alt C-1)	Option 2 (Alt C-2)	Option 3 (Alt C-3)
Simple network			
All branches have direct access to LAX Automated People Mover			
Matching regional travel patterns			
Minimized extra resources (Required rail cars/Annual operating cost)	46/\$99.5 mil	46/\$102.9 mil	50/\$113.2 mil
Expansion south & north creates simple new north-south line			

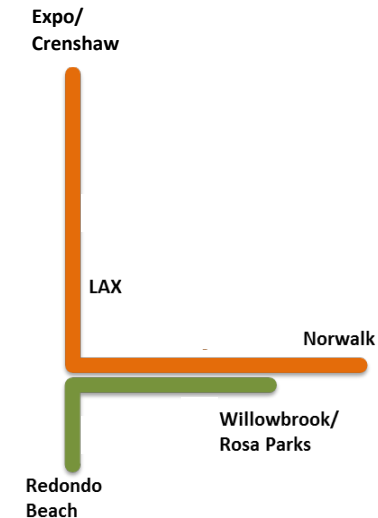
Alt C-1: Crenshaw/Norwalk Interline with Redondo Shuttle



Alt C-2: Crenshaw/Redondo Interline, Norwalk Shortline



Alt C-3: Green Line shortline, Crenshaw to Norwalk

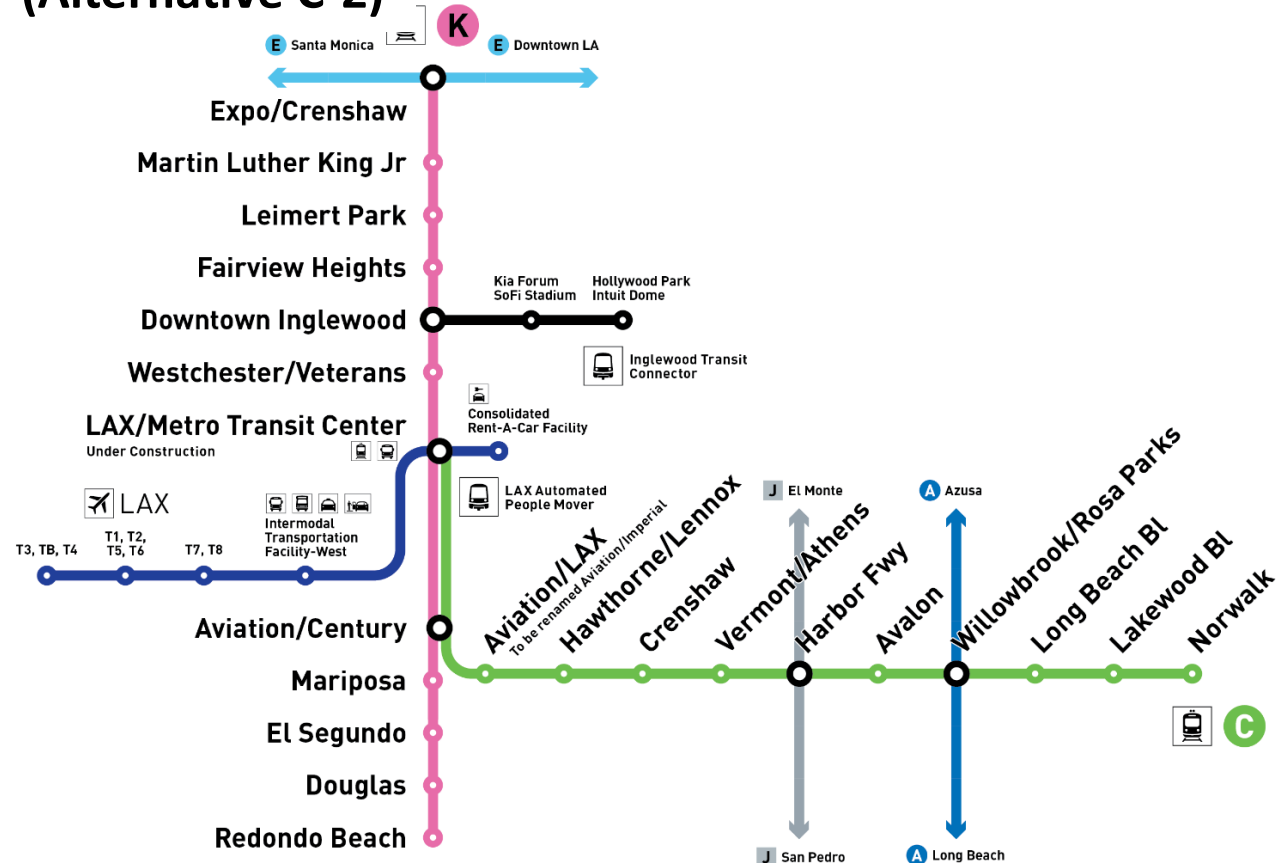


# Recommendation

Option 2 (C-2) as shown in diagram is recommended for the following reasons:

- Simple, easy-to-understand network
- Most supported option from community outreach
- Provides direct connection to LAX/Metro Transit Center from all C and K Line stations with key connections there to the regional bus network
- Creates north-south (K) and east-west (C) lines in line with regional travel patterns
- Lower resources (less trains/operators) and operating cost (\$10.3 million less per year vs Option 3)
- North-south corridor consistent with Torrance and Hollywood future extensions; extensions required at four stations for future capacity enhancement
- Can provide quick 3-minute transfers between C & K Lines at LAX/Metro Transit Center

## Option 2 (Alternative C-2)





## South Bay Cities Council of Governments

June 12, 2023

TO: SBCCOG Transportation Committee

FROM: Jacki Bacharach, SBCCOG Executive Director  
Steve Lantz, SBCCOG Transportation Director

RE: Metro K Line (Crenshaw) / Metro C Line (Green) Operating Plan Position

### BACKGROUND

In May 2022 the SBCCOG Transportation Committee considered Metro's proposed operating plan options for train service between the Metro K Line (Crenshaw) and the Metro C Line (Green). SBCCOG staff recommended that the Board select Option C-2 as its preferred option. Option C-2 would create a new Metro rail route between the Green Line Redondo Beach Station and the Exposition Line Crenshaw Station, with a future extension to the Torrance Transit Center. The May 2022 agenda item is attached as Exhibit 2. The item was tabled by the Transportation Committee pending a report back to the SBCCOG on the feedback from Metro's subsequent public outreach process related to the operating plan options.

Since that time, Metro has conducted public outreach and surveys to gather input on the operating plans under consideration, now referred to as "Option 1", "Option 2", and "Option 3". Metro staff is tentatively scheduled to provide the outreach process update at the May 8, 2023 SBCCOG Transportation Committee meeting.

The three options being considered are shown in Exhibit 1.

Based on the technical analysis documented in the May 1, 2022 agenda item below, SBCCOG staff continues to recommend Option 2 as the preferred option. Unlike other options, Option 2 would provide South Bay riders with a one-seat ride or a single transfer to the most destinations across L. A. County.

### RECOMMENDATION

That the SBCCOG Board of Directors endorse Option 2 for the K Line (Crenshaw) / C Line (Green) Operating Plan.

#### Attachments:

Exhibit 1 – 5.2023 Diagrams of Options 1-3

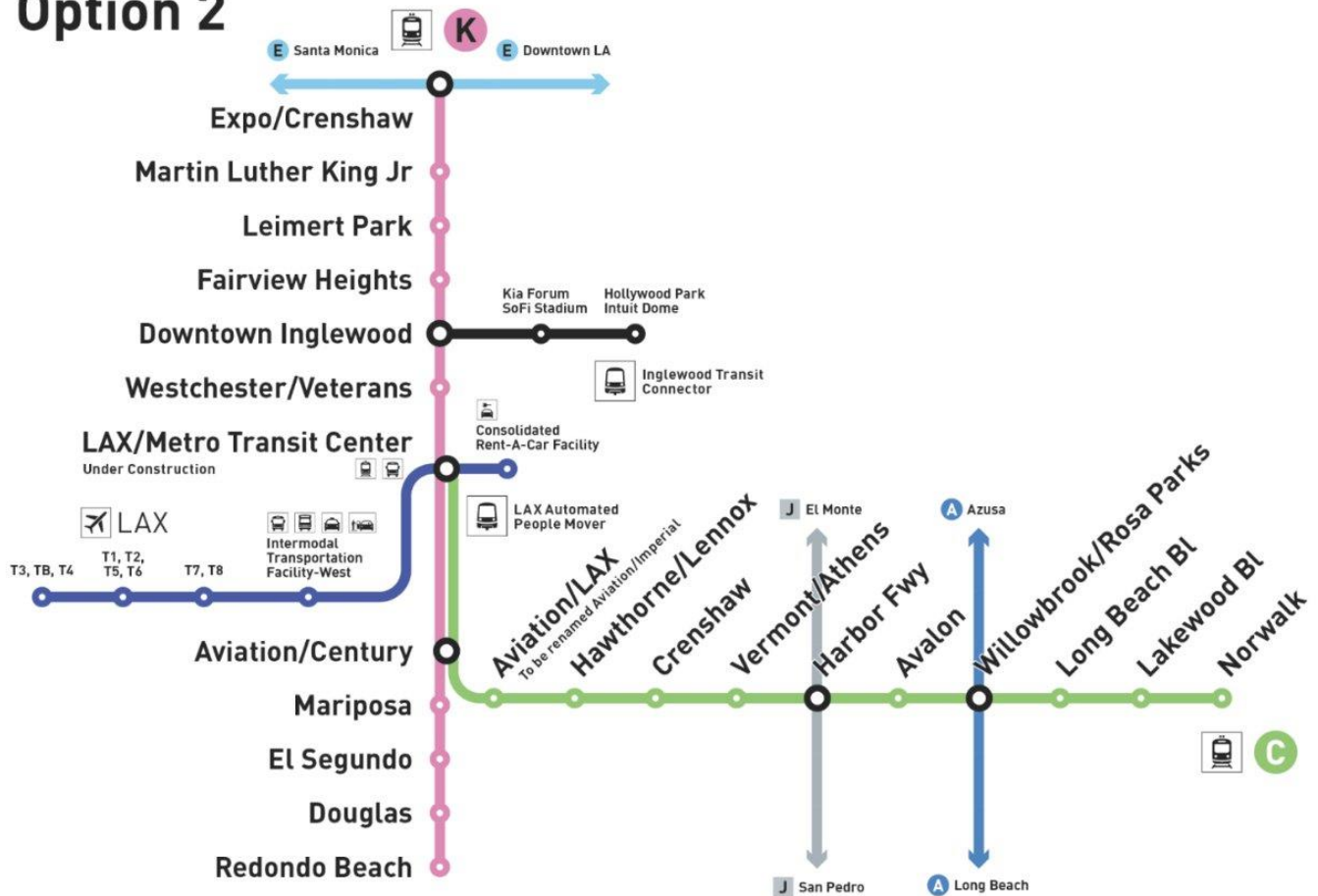
Exhibit 2 – 5.1.22 Metro Crenshaw/LAX (CLAX) / Metro Green Line Operating Plan Reconfirmation Memo

## Option 1



- Provides direct connection to LAX/Metro Transit Center from all C and K Line Stations
- Riders from Norwalk segment of the existing C Line will get direct access to all K Line stations including Expo/Crenshaw connection to the the E Line
- Riders traveling to/from the Redondo Beach segment of the existing C Line will need to change trains at Aviation/Century Station to reach the Norwalk segment
- Riders from the Redondo Beach segment of the existing C Line will need to change trains at LAX/Metro Transit Center to reach K Line stations north of there, including Expo/Crenshaw connection to the E Line

## Option 2



- Provides direct connection to LAX/Metro Transit Center from all C and K Line Stations
- Riders from the Redondo Beach segment of the existing C Line will get direct access to all K Line stations including Expo/Crenshaw connection to the E Line
- Riders traveling from the Norwalk segment of the existing C Line to the Redondo Beach segment of the C Line will need to change trains at Aviation/Century Station
- Riders from the Norwalk segment of the existing C Line will need to change trains at LAX/Metro Transit Center to reach K Line stations north of there, including Expo/Crenshaw connection to the E Line

## Option 3



- Provides direct connection to LAX/Metro Transit Center from all K Line Stations and the Norwalk segment of the existing C Line
- No direct connection to LAX/Metro Transit Center from the Redondo Beach segment of the existing C Line
- Riders from Norwalk segment of the existing C Line will get direct access to all K Line stations, including Expo/Crenshaw connection to the E Line
- Riders traveling from existing C Line stations between Willowbrook/Rosa Parks and Aviation/LAX will have a direct connection to the Redondo Beach segment of the existing C Line
- Riders traveling from Norwalk, Lakewood Bl and Long Beach Bl stations will need to change trains at Aviation/LAX Station to reach the Redondo Beach segment of the existing C Line



## South Bay Cities Council of Governments

May 1, 2022

TO: SBCCOG Transportation Committee  
SBCCOG Steering Committee

FROM: Steve Lantz, SBCCOG Transportation Director

RE: Metro Crenshaw/LAX (CLAX) / Metro Green Line Operating Plan Reconfirmation

### **Adherence to Strategic Plan:**

*Goal B: Regional Advocacy.* Advocate for the interests of the South Bay.

### **BACKGROUND**

In 2018, L. A. Metro staff discussed with the SBCCOG Metro's initial operating plans for train service between the Crenshaw /LAX (CLAX) and Green Lines. Metro chose Option C-3, a one-year pilot operating plan that provided a one-seat ride between Torrance and Norwalk but required a transfer from the Green Line to the CLAX Line at the Green Line Aviation/Imperial station for travel between Torrance, LAX and the Exposition Line. Although the SBCCOG favored Option C-2, which would provide a one-seat ride between Torrance and the Exposition Line, the SBCCOG Board agreed to support a one-year pilot of C-3 in consensus with the Gateway Cities Council of Governments.

Since that time, Metro has experienced delays in the completion of the CLAX rail project which has shortened the time gap between opening the CLAX line north of LAX and integrating operations between the CLAX line and the Green Line. In addition, the LAX / Metro connector project is under construction which will add a new common station connecting the people mover from all LAX terminals to the CLAX Line at 96<sup>th</sup> Street and Aviation Boulevard rather than requiring a shuttle bus ride between the Green Line Aviation/Imperial station and the LAX terminals.

Metro Staff does not believe there is sufficient time to implement a one-year pilot, evaluate and adjust the CLAX operation plan before the CLAX line can operate through the APM station to the Green Line in 2023 and before the LAX APM station opens in 2024. The northern segment of the CLAX line (Segment 1 - Westchester/Veterans to Expo/Crenshaw) is expected to open in Fall 2022. Segment 2 (between Westchester/Veterans and the Green Line) is now projected for a Fall 2023 opening. The AMC is expected to open in late 2024.

Instead of instituting a one-year pilot, Metro staff is now undertaking a public outreach program to reconsider whether its CLAX/Green Line integrated operating plan should be the compromise C-3 or C-2, which is consistent with SBCCOG's initial recommendation (see C-2 and C-3 schematic drawings, Exhibit 1).

C-2 would enable a one-seat ride from Torrance to the Exposition Line, with one-seat ride extended to Hollywood once the Crenshaw Line Northern Segment is completed. The Green Line trains would provide a one-seat ride between Norwalk and the LAX AMC CLAX station. Riders between Norwalk and Torrance also would transfer at the LAX AMC CLAX station.

Option C-2 provides the best opportunity to increase ridership on the west end of Green Line by providing a competitive north/south service with the opening of the Green Line Southern segment to Torrance enabling a one-seat ride from Torrance to the Exposition Line and providing a one-seat ride from Norwalk to the AMC station. However, riders travelling from Norwalk to Torrance or Exposition would need to transfer at the AMC station.

For the South Bay, projected C-2 peak-hour ridership would increase ridership on the Green Line South segment between Torrance and Redondo Beach by approximately 1,400 riders per hour with total peak-hour ridership on the segments as follows:

Norwalk to AMC	4,980
Crenshaw/Expo to Torrance	6,320
Airport People Mover	<u>920</u>
Total Peak Hour	12,220

The C-2 option also has lowest operating cost, requires fewer new operators, and requires the smallest railcar fleet expansion. The C-3 option has higher cost due to an overlap of service between Willowbrook/Rosa Parks and Aviation/LAX stations but estimated ridership is minimally different. Metro staff projects the relative cost and operational differences as follows:

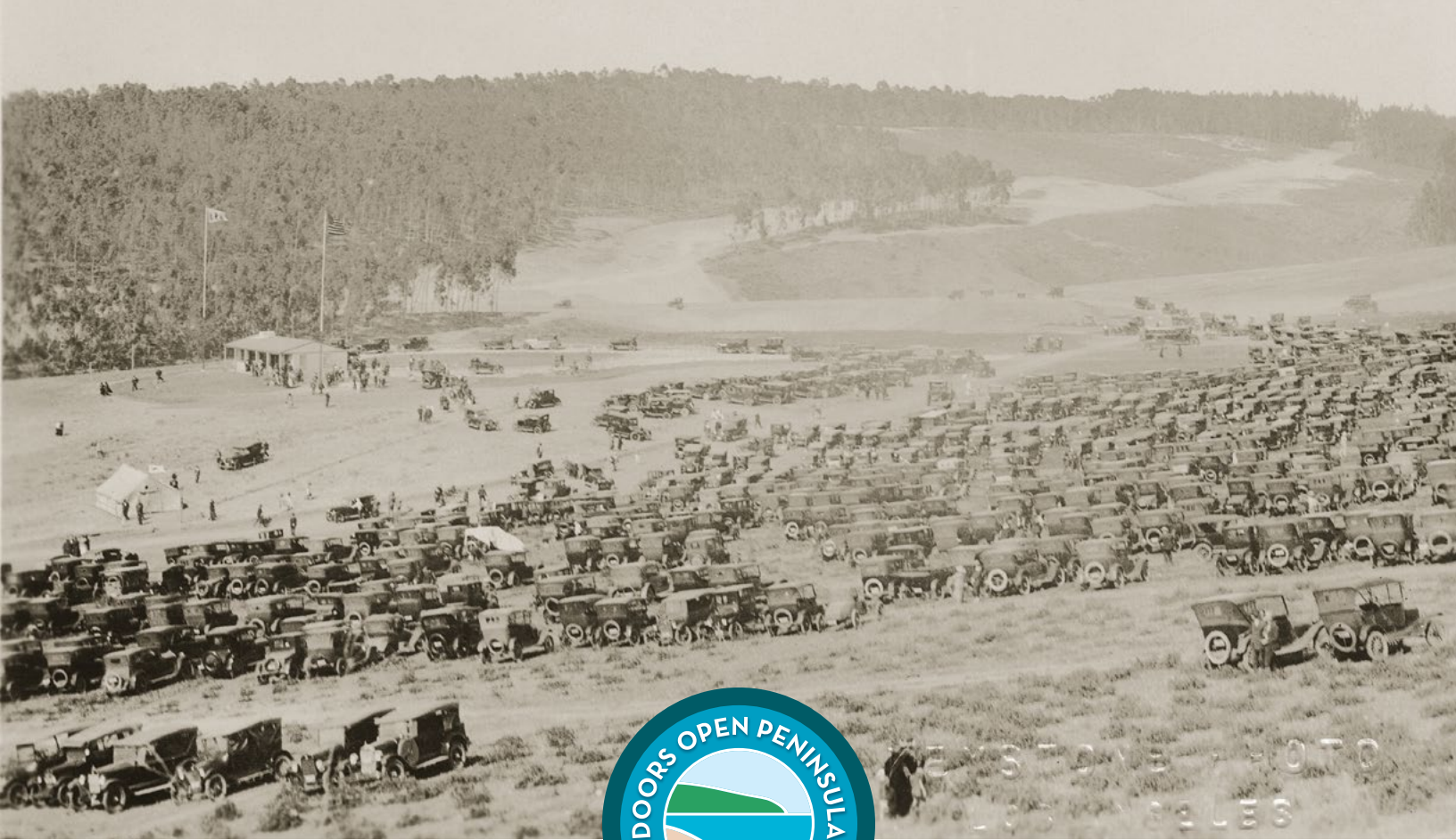
<u>Option</u>	<u>Annual Operating Cost</u>	<u>Railcar Fleet Need</u>	<u>Reduced Operators Vs C-3</u>
C-2	\$76.0M	51	-15
C-3	\$90.6M	60	N/C

The SBCCOG Board also requested that Metro immediately begin initiating two significant capital projects to improve the reliability and capacity of the CLAX and Green Lines. One would expand Green Line Platforms to accommodate 3-car trains. The other would increase power capacity at the Green Line and CLAX traction power stations. Metro staff does not believe there is a need to expand platforms to operate 3-car trains or to increase traction power before the CLAX line is extended north from the Exposition Line to Hollywood. The platform extensions and additional traction power will be evaluated in the context of the Crenshaw North project planning.

#### RECOMMENDATIONS

That the SBCCOG Board of Directors:

1. Reaffirms SBCCOG's endorsement of the C-2 CLAX / Green Line Operating Plan now being proposed by L. A. Metro staff; and
2. Requests L. A. Metro continue development and delivery of the 3-car platform extension projects at the Green Line Aviation, Mariposa, Douglas and Marine Green Line stations to conform with Metro system design standards in all phases of the Crenshaw North light rail segment development.



# DOORS OPEN PENINSULA 2023

Celebrating 100 Years of History on the Palos Verdes Peninsula



COMMEMORATIVE BOOKLET

JUNE 17, 2023

PVLD.ORG/DOP





#### DOP 2023 COMMITTEE

Karina Bañales  
Colleen Cotter  
Michele Fricke  
Greg Grammer  
Richard Ishibashi  
Sarah Lann  
Leticia Polizzi  
Ryan Roy  
Anastasia Seims  
Suzanne Seymour  
Monique Sugimoto  
Gabrielle Swain

#### PALOS VERDES LIBRARY DISTRICT BOARD OF TRUSTEES

Rosa Kwon Easton, *President*  
Bob Parke, *Vice President*  
Zoe Unno, *Secretary*  
Jonathan Beutler  
Kingston Wong

#### PENINSULA FRIENDS OF THE LIBRARY BOARD

Ray Randall, *President*  
Sharron Parke, *Vice President*  
George Legg, *Treasurer*  
Nancy Mahr, *Secretary*  
Ron DeFrees  
Merlin David  
Jennifer King  
Sabina Merchant  
Lloyd Misteles  
Susan Paul  
Darlene Skorka  
Helen Stoddart

#### PENINSULA FRIENDS OF THE LIBRARY STAFF

Gillian Gordon,  
*Interim Administrative Director*  
Diana Morgan,  
*Friends Administrator*

Photos courtesy of the  
Palos Verdes Library District  
Local History Collection.

© Palos Verdes Library District 2023

## THANK YOU TO OUR SPONSORS



PENINSULA  
*Friends*  
OF THE LIBRARY

PRESENTING SPONSOR

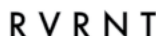


**MALAGA**  
BANK

MAJOR SPONSOR



CITY PARTNERS



Palos Verdes College, 1947.

## RECOGNITION

This program is made possible by the generous support of the Peninsula Friends of the Library.

Palos Verdes Symphonic Band brought to you by Palos Verdes Peninsula Association of REALTORS®.

Thanks to Dana Graham — Palos Verdes resident since 1947 — and Dana Graham Real Estate for support of the Mini-Therapy Ponies.

Thank you to the Long Beach Model-T Club.

Thanks to the Palos Verdes Peninsula Unified School District.





## WELCOME

### PALOS VERDES LIBRARY DISTRICT DIRECTOR, JENNIFER ADDINGTON

Dear Peninsula Community,



On behalf of the Palos Verdes Library District (PVLD), Peninsula Friends of the Library (PFL), and Peninsula cities and organizations, I'd like to welcome you to **Doors Open Peninsula 2023: Celebrating 100 Years of History on the Palos Verdes Peninsula**.

DOP (pronounced 'dope' without the e) commemorates a 1923 real estate rally that essentially launched the modern Palos Verdes Peninsula development and led to the community we are today. What could be more fitting than to celebrate this milestone than with a Peninsula-wide open house! This is your chance to view architectural sites, museums, and cultural institutions throughout the Peninsula and learn more about the area's unique history and culture.

PVLD has proudly served the Peninsula for over 93 years, and we are thrilled to bring you this program with our partner cities and organizations. We hope you will experience this community-wide, multigenerational event as a chance to connect, be inspired, and continue building our wonderful community for future generations.

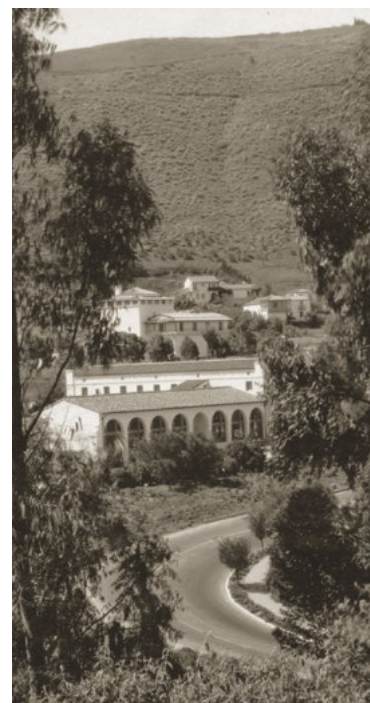
We look forward to seeing you there.

JENNIFER ADDINGTON, Director, Palos Verdes Library District



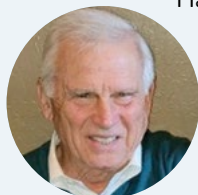
“A youngster that reads a lot never has to wonder what he is going to do with his time.”

— ROMAYNE MARTIN,  
Founder of PV School  
and Library Districts



### PENINSULA FRIENDS OF THE LIBRARY PRESIDENT, RAY RANDALL

Dear Palos Verdes Friends,



Happy Birthday to Palos Verdes! The Peninsula Friends of the Library is very pleased to assist in the “Doors Open Peninsula 2023” celebration event for our wonderful community.

We encourage you to participate in the many activities planned and learn about what makes our community so special. From the Peninsula-wide open house to art exhibits and more, we hope you'll find these activities fun for you, your family, and friends.

Congratulations Palos Verdes. Cheers to the next 100!

RAY RANDALL, President, Peninsula Friends of the Library



[TOP TO BOTTOM]

Official checkers at entrance of real estate rally counting visitors, 1923.

Romayne C. Martin, one of the earliest and most influential woman during the early years, 1926.

Malaga Cove Plaza with Syndicate Building in the foreground and Library in the background, 1930.

# WHAT YOU NEED TO KNOW

## DOORS OPEN PENINSULA DETAILS



The DOP 2023 Organizing Committee welcomes you to DOP 2023, a program that brings together the Peninsula cities in celebration of this milestone event. Thanks to our participating organizations and Peninsula cities, there are over 50 DOP sites across the Peninsula to visit and learn more about. The sites include historical plaques designated by the Palos Verdes Historical Society over the years. While some of these places may be places you pass by every day, and are always open, some of these places will be available for the first time.

To help you plan your day, the DOP sites are organized into five themed categories: architecture, business districts (built and unbuilt), civic, cultural history, and environment and urban planning. The idea is that starting from those categories you can then mix and match to craft your own tailor-made adventure. The sites are listed alphabetically with their numbers so you can find them on the map.

Use this brochure as your “passport” and grab a stamp from each site you visit. For sites that are just plaques or unstaffed, we’ve pre-filled the blue stamp area for you so all you have to do is stop by! And if you don’t get to all the sites this time, you can keep some items on your bucket list of things to do and check back with the site later on.

And what’s an anniversary without cake and fun activities? Make sure to visit the DOP Hub site on the **original** rally site, Malaga Cove School, between 9:00 and 4:00. Visit our website [pvld.org/DOP](http://pvld.org/DOP) to learn more about each site and other DOP activities.

We look forward to seeing you there.

*Monique Sugimoto*

**MONIQUE SUGIMOTO**, Chair of the DOP 2023 Organizing Committee  
Archivist and Local History Librarian, Palos Verdes Library District



## TOUR TYPES

- ARCHITECTURE
- BUSINESS DISTRICT
- CIVIC
- CULTURE & HISTORY
- ENVIRONMENT & URBAN PLANNING



## PARKING & SHUTTLES

Street parking is mostly available at each site. Check each site for parking availability and restrictions.

Additional parking is available in Palos Verdes Estates at St. Francis Episcopal Church lower parking lot.

A FREE shuttle will be available from Valmonte School to Mirlo Gate Lodge. Service available from 9:00-4:30. Round trip is 25 minutes.

## DOORS OPEN PENINSULA (DOP) HUB

375 VIA ALMAR, PVE, 90274



Malaga Cove School (PVPUSD District Offices) is the DOP Hub. Pick up your DOP commemorative brochure at the Hub or any one of the Library’s three locations. Participating DOP sites will also have a limited number of brochures available.

**The Hub hours are 9:00 - 4:00.** The Hub will have a fleet of Model-Ts, tables for community organizations, the PV Symphonic Band (12:15 - 2:00), Mini Therapy Ponies (9:00 - 12:30), celebration cake (12:30) and more!

At the Hub, pick up a free autographed copy (while supplies last) of *P is for Palos Verdes* by local author Mary Jo Hazard.

This book of rhyming text and beautiful photos has its own checklist to encourage kids of all ages to track their discoveries on the Peninsula. (Additional copies available for purchase at the Peninsula Center Library Gift Shop.)

For all jigsaw puzzle fans, visit the Peninsula Friends of the Library table at the Hub to see a puzzle created by Good World Puzzles and artist Jake Tedesco that captures the Peninsula of today and yesterday. (Puzzles available for purchase.)

Each DOP site is participating with its own hours. Please be mindful of neighbors and parking restrictions for those sites located in residential areas.

## ADDITIONAL PROGRAM

“Palos Verdes Peninsula: Its Founding, Its Culture, Its Beauty,” an exhibit by artist Rick Humphrey can be seen at Malaga Cove Library Gallery from June 22 to July 08. The opening reception will be held on June 24th from 2:00 - 4:00 pm in the Gallery.

**#DoorsOpenPeninsula**

## DISCLAIMER

Information in this brochure is subject to change. For the latest information on DOP site availability and participation, please contact the DOP site directly.

# HISTORY

We take this 100-year milestone as an opportunity to celebrate the Peninsula, but its history dates much further back. For centuries the Tongva-Gabrielino have called this area home. In the mid-nineteenth century, the Peninsula was incorporated into the Mexican land grant known as Rancho de los Palos Verdes and served as a working ranch where, for decades, cattle grazed the hills. Later, in the early twentieth century, a large population of Japanese farmers settled on the Peninsula and farmed the area until forcibly moved to internment camps during World War II.

In 1913, Frank Vanderlip, Sr., former president of the National City Bank of New York (now Citibank), and a group of investors purchased the area to develop it into a residential colony. World War I slowed the grand plans for the residential colony. Within a few years after the war ended, however, the “Palos Verdes Project”, with experts in planning Frederick Law Olmsted, Jr. and Charles

Cheney, was up and running. The 1923 rally launched the sale of lots in the first planned subdivision, which became the City of Palos Verdes Estates in 1939.

Just after World War II, the residential population skyrocketed, eventually leading to the formation of the next three cities: Rolling Hills and Rolling Hills Estates, both founded in 1957, and Rancho Palos Verdes, founded in 1973.

A unique aspect of the Peninsula’s history is its military connection. Starting in 1914 with the creation of Fort MacArthur, the Peninsula played a part in U.S. military defense until at least 1974. Nowhere is this more evident than at the Rancho Palos Verdes City Hall site.

The Peninsula has been known for its views and open space, and to many it is the hidden gem of Los Angeles County.

*Panoramic view of agricultural fields in Portuguese Bend, 1920.*



## 37. 4TH CITY FOUNDERS PLAQUE AT ROBERT E. RYAN PARK

● CULTURE & HISTORY

This tree grove honors Gordon Curtis, Dorothy Le Conte and Fred Hesse Jr. for their efforts in RPV incorporation. The park is RPV’s first park and was transferred from LA County in 1973. “Rancho Palos Verdes Park” was renamed in 1995 to honor Robert E. Ryan, a 20-year council member and instrumental in RPV’s incorporation.

30359 Hawthorne Boulevard, RPV, 90275  
Dawn to dusk



## 41. BATTERY BARNES (Exterior only)

● CIVIC

Battery Barnes (aka Battery 240) is a fixed artillery site located just west of the Rancho Palos Verdes City Hall buildings. Formerly part of the Point Vicente Military Reservation, it is now owned by the U.S. Coast Guard. The Battery once housed 6” guns that had a range of 15 miles. These weapons

were phased out for anti-aircraft weapons. Site included in Alta Vicente Reserve hike conducted by Los Serenos docents starting at 9:00 am. See [losserenos.org/pdfs/CurrentHikeFlyer.pdf](http://losserenos.org/pdfs/CurrentHikeFlyer.pdf)

Rancho Palos Verdes City Hall,  
30940 Hawthorne Boulevard, RPV, 90275  
Docent available 9:00 - Noon. Site is a short walk on an unpaved trail located past City Hall buildings.



## 20. BEAUTIFY LUNADA BAY

● ENVIRONMENT & URBAN PLANNING

Directly across from Lunada Bay Elementary

School, visitors will have breathtaking views, and observe birds and butterflies on this two acres of newly vegetated oceanfront native habitat. A community-driven project of the Lunada Bay Homeowners Association (LBHOA) in partnership with the City of PVE and the Palos Verdes Peninsula Land Conservancy (PVPLC), The Beautify Lunada Bay Pilot restores neglected parkland with attractive, locally native, drought-tolerant plantings. Information and hand-outs on native plants, PVPLC, the California Native Plant Society and the LBHOA will be available.

520 Paseo Lunado, PVE, 90274  
[lbhoa.org/BeautifyLunadaBay](http://lbhoa.org/BeautifyLunadaBay)  
10:00 am - 3:00 pm



## 54. CABRILLO MARINE AQUARIUM

● CULTURE & HISTORY

The Aquarium was founded in 1935. From

modest beginnings as a collection of shells to today’s Frank Gehry-designed center for teaching and research, the Aquarium is an essential resource for conservation, environmental and marine science education. Located closest to one of the largest ports in the world, the Aquarium and surrounding beaches provide a unique opportunity to experience the urban and ocean relationship. Visit the Exploration Center and Aquatic Nursery and view a short film. Sensory inclusive. Call site for touch tank, grunion hatching and feeding presentation schedule.

3720 Stephen M White Dr., San Pedro, 90731  
[cabrillomarineaquarium.org](http://cabrillomarineaquarium.org) • 310.548.7562  
Noon - 5:00 pm  
Parking is \$1 an hour (Debit or credit card payment only.)



Public Restrooms



Partially Handicapped-accessible



Fully Handicapped-accessible



Family Friendly



Food On Site



Palos Verdes Historical Society



California Register Historical Resources



National Register of Historic Places





## 30. CHADWICK SCHOOL PLAQUE

● CULTURE & HISTORY

Founded in 1935 by Margaret Chadwick and Commander

Joseph Chadwick in San Pedro, the school moved to Palos Verdes in 1938 for pre-primary to senior high school. The school welcomed local students and for those boarding. Frank Vanderlip Sr. donated the 35 acres overlooking the harbor and ocean to promote the creation of a country school where the environment and tranquil pace would foster. It was the first high school on the Peninsula and operated the first co-educational dormitories on the West Coast.

26800 S. Academy Drive, PVP, 90274  
chadwickschool.org

No parking on residential streets. (Also available by foot through Chadwick Canyon. Park at RHE City Hall. Two miles round trip.)



## 2. CHOWIGNA INDIAN VILLAGE PLAQUE

● CULTURE & HISTORY

This plaque honors the Tongva who made the cliffs their home for a period of 8,000 years. The bluff above Malaga Cove is a large and important archaeological site with at least four levels of Native American occupancy discovered, each with characteristic tools, implements and weapons. The plaque is at the DOP Hub entrance next to the parking lot in front of Malaga Cove School.

375 Via Almar, PVE, 90274



## 22. CRENSHAW HORSE TUNNEL

● ENVIRONMENT & URBAN PLANNING

Before roads and residences, horse trails

crisscrossed the Peninsula. To accommodate horse traffic, this tunnel allows horses to cross one of the busiest roads in the City. With dedicated horse and pedestrian trails, the tunnel represents the unique characteristics of this equestrian-focused city. A similar tunnel is located under Hawthorne.

Short walk from Rolling Hills Estates City Hall or Right of Weber Equestrian Center parking lot.

Parking available at Rolling Hills Estates City Hall. No handicap accessibility. Unpassable if rained out. Respect horse riders. Horses have right-of-way.



## 51. FIRST JAPANESE-AMERICAN FARM ON PENINSULA AT FOUNDERS PARK PLAQUE

● CULTURE & HISTORY

This plaque honors the first Japanese-American farm built by Kumekichi Ishibashi who came to the Peninsula ca 1906. Ishibashi is said to have introduced "dry farming" techniques on the Peninsula. During World War II, the Ishibashi family was incarcerated in Poston, Arizona. The family was one of the few original farming families who returned after the war to farm.

1 Trump National Drive, RPV, 90275

rpvca.gov

Dawn to dusk. Limited parking in lot.

Street parking available on Trump Drive.

Marker located halfway down the paved path on the right when looking toward the ocean.



## 6. FREDERICK LAW OLMSTED JR. PLAQUE

● ARCHITECTURE

This plaque honors Frederick Law Olmsted,

Jr, Director of Design for the Palos Verdes Project who lived in Palos Verdes Estates from 1922 to 1931. Olmsted worked on layouts for the whole community, including roads, parks, parkways, civic centers, school sites, and other infrastructure throughout the Peninsula. His work on the Peninsula's first subdivision (Palos Verdes Estates) included the Malaga Cove Library, Malaga Cove School, La Venta Inn and a number of residences. Olmsted's work with the Palos Verdes Project made Palos Verdes one of the nation's first planned communities and contributed to the landscapes that define Palos Verdes today.

2101 Rosita Place, PVE, 90274

Parking available at St. Francis Episcopal Church.

Short walk to the plaque. Exterior only. Structure is a private residence.



## 11. GARDNER BUILDING PLAQUE

● ARCHITECTURE

Built in 1925, the Gardner Building (aka Casa Primera) was the

first commercial building. The building once housed the Palos Verdes Homes Association, Art Jury, grocery store, drug store, school and library. The Spanish Renaissance-style building was designed by architects Weber, Staunton and Spaulding.

68 Malaga Cove Plaza, PVE, 90274



## 29. GEORGE F CANYON NATURE CENTER

● ENVIRONMENT & URBAN PLANNING

The Center overlooks

the 51-acre George F Canyon with a 1.6-mile trail that winds through shaded riparian woodland and coastal sage scrub habitat. It has a rare mainland exposure of the Peninsula's Catalina schist bedrock. Inside the Center visitors can interact with exhibits to learn about the plants, animals, insects, geology and Peninsula natural history. The Center is owned by the City of Rolling Hills Estates and operated by the Palos Verdes Peninsula Land Conservancy and will be upgraded over the next few years.

27305 Palos Verdes Dr East, RHE, 90274

pvplc.org

10:00 am - 3:30 pm. Parking available in the Center lot. Additional overflow parking in a gravel lot at the trail head up Palos Verdes Dr.



## 48. HARDEN GATEHOUSE PLAQUE

● ARCHITECTURE

The plaque is located on the left hand side of

the gate. Frank A. Vanderlip, Sr's sister Ruth and brother-in-law Edward Harden built this Gatehouse, as it stands today, in 1926. They hired architect Gordon Kaufmann and the Olmsted Brothers designed the landscaping. The Tuscan-designed villa was never built due to the 1929 Stock Market crash.

5500 Palos Verdes Dr. South, RPV, 90275

No parking. Structure is a private residence.





## 42. HATANO FARM LOOKOUT

● CULTURE & HISTORY

Hatano Farm was designated a California Point of Historical

Interest in 2023 serving as an example of the postwar movement and settlement of Japanese Americans. Established in 1953, Hatano Farm continued the longstanding tradition of Japanese American flower farming on the Peninsula. Meet with architectural historian Sian Winship and learn of the significance of the Peninsula's most recent historical site.

Rancho Palos Verdes City Hall  
30940 Hawthorne Boulevard, RPV, 90275  
rpvca.gov

Docent available 9:30 am - Noon.

Parking at City Hall. Site located past helipad.



## 25. KELLY'S KORNER (ROLLING HILLS GENERAL STORE)

● CULTURE & HISTORY

The General Store was designed by renowned architect Paul R. Williams in 1939. Now home to Kelly's Korner sandwich shop, the wood board and red-roof building has served as a grocery store, post office, clothing and feed store, town hall and clubhouse for community activities. In 1977, it was included in Rolling Hills Estates' historic landmark overlay designation. The Kelly family has owned and operated the popular sandwich shop since 1984. Grab a bite and walk around the exterior of the building. Outdoor dining only. No access to the building interior.

26947 Rolling Hills Road, RHE, 90274  
kellyskornerpv.com • 310.541.2234  
10:00 am - 4:30 pm • Parking is limited.



“I found myself reminded vividly of the Sorrentine Peninsula and the Amalfi Drive: Yet the most exciting part of my vision was that this gorgeous scene was not a piece of Italy at all but was here in America, an unspoiled sheet of paper to be written on with loving care.”

— FRANK A. VANDERLIP, SR.

[TOP TO BOTTOM]

Display of archaeological artifacts found during early development, 1926.

Group portrait of Frank A. Vanderlip, Sr. with wife Narcissa Mabel Cox Vanderlip and children, ca. 1911.

Harry Phillips Sr. on the Phillips Ranch in an area that later became the Palos Verdes Golf Course, 1915.

Early Japanese farming families, 1931.

Instrument shelter recording meteorological data to determine best areas for farming and building sites, 1915.

Cattle ranch, 1915.







### 13. LA VENTA INN

#### ● ARCHITECTURE

La Venta Inn was constructed in 1923 by architect Walter Davis as a real estate clubhouse for the

Palos Verdes Project. For one hundred years it's had a colorful history as an Inn, a private home, and world-renowned event venue. Today, it continues to be a beacon of history and celebration, hosting weddings, private events, and community experiences. Made by Meg catering is the exclusive caterer for all events at this location. Tours provided. Ceremony lawn accessible by stairs only. Limited parking.

796 Via Del Monte, PVE, 90274

laventa.com • 310.373.0123

9:00 am - Noon.

52 spaces for parking



“A virgin tract of twenty five square miles, with every advantage of climate, coast, and lofty intricate hills, planned, guided, controlled from the very start with the sole exclusive object of making it and keeping it...the pleasantest place to live that it can possibly be made. If we be not rogues or fools...the thing can be done as it never has been done in the world before.”

— FREDERICK LAW OLMSTED, JR., 1922



### 9. LOS ANGELES COUNTY FIRE DEPARTMENT PALOS VERDES ESTATES FIRE STATION 2

#### ● CIVIC

The City of Palos Verdes Estates has contracted with Los Angeles County for fire suppression, enforcement of the Fire Code, and paramedic services since 1986. The County also provides emergency ambulance service. Prior to 1986, the City had its own fire services. Visitors will get a tour of the Fire Station and see an antique fire truck.

340 Palos Verdes Drive West, PVE, 90274

10:00 am - 4:00 pm

Closed if out on service call.



[TOP TO BOTTOM]

La Venta Inn, originally built as a club house to entertain realtors and prospective land owners, was the first permanent building constructed by the Palos Verdes Project, 1926.

Palos Verdes Project sales team after selling \$15,000 in underwriting notes, 1923.

Frederick Law Olmsted, Jr., landscape architect for the Palos Verdes Project, 1925.

Mule-drawn wagons traveling south along unpaved Granvia La Costa (now PV Drive West), 1924.

## 40. LOS ANGELES DEFENSE AREA NIKE MISSILE SITE #55 SILO

● CIVIC

The Point Vicente Military Reservation, now the City Hall site for RPV, was formerly the administration and launch facilities for the Nike Ajax and Nike Hercules anti-aircraft missiles in the 1950s and 1960s. The facility was one of 16 placed around Southern California to defend Los Angeles from a military attack during the Cold War. The site was decommissioned in 1974. Not normally open to visitors. Visitors can see one of the two silos which has remained relatively unchanged since it was decommissioned.

30940 Hawthorne Boulevard, RPV, 90275  
rpvca.gov

9:00 am - Noon. Visitors must sign a liability waiver before entering the silo. No handicap accessibility. Steep stairs at entrance.



## 56. LOS ANGELES MARITIME MUSEUM

● CULTURE & HISTORY

The Los Angeles Maritime Museum is located in San Pedro,

in the historic 1941 Municipal Ferry Terminal building. The building has been operating as a museum since 1980. Visitors will learn about the history of Los Angeles harbor with interactive exhibits, and enjoy views of the busy main channel from the back patio.

Berth 84 Foot of 6th Street, San Pedro, 90731  
(For GPS, use 600 Sampson Way.)

lamaritimemuseum.org • 310.548.7618  
Noon - 5 pm (last entry at 4:30 pm). Street parking on 5th and 6th streets, and pay lots at the USS IOWA and Liberty Hill Plaza. Free admission for DOP 2023 guests and 10% discount at museum shop.



## 19. LUNADA BAY PLAZA “ANNIVERSARY CELEBRATION CONCERT IN THE PARK”

● BUSINESS DISTRICT

Lunada Bay Plaza was one of the original planned business districts of the Palos Verdes Project. It was to be the largest of the

districts and plans included a theater, post office, community building and a variety of stores. While these plans didn't materialize, the Plaza is still the hub of the community with summer concerts and festivals throughout the year. Celebration concert sponsored by Lunada Bay Homeowners Association will feature cool jazz from the 1920s. Archival posters, activities, food, and beverages available. Bring a lawn chair.

2201 Palos Verdes Drive West @ Yarmouth Road, PVE, 90274  
LBHOA.org • 4:00 pm - 6:00 pm



## 12. MALAGA COVE LIBRARY

● CIVIC

Opening as the Palos Verdes Public Library & Art Gallery on

June 3, 1930, the Mediterranean Revival architectural style building was designed by architect Myron Hunt. The garden outside the Gallery is an original Frederick Law Olmsted, Jr. garden. A multi-year renovation project to bring back original lighting and interiors was completed in 2017. Tour the building including the vault, Gallery, tower room and see the original dumbwaiter. No elevators. Visit the Book Sale. Opens at 9:00 am on June 17. Regular hours M-Th 10-6, F 2-6, Sat 10-5.

2400 Via Campesina, PVE, 90274  
pvld.org • 310.921.7547

9:00 am - 5:00 pm. Limited parking in the lot off Via Pinalte. Street parking available.



## 10. MALAGA COVE PLAZA HISTORIC DISTRICT

● BUSINESS DISTRICT

The District is the most recent historically designated site in the City of PVE. One of the original town centers for the first subdivision planned for the Peninsula, the Mediterranean Revival style Plaza was mostly developed between 1925-1964 with buildings by architect Walter Swindle Davis, Sumner Spaulding, Carrington Lewis and open space by Olmsted Brothers. Visitors will learn about the District's history including Neptune Fountain.

Malaga Cove Plaza, Palos Verdes Drive West between Via Tejon and Via Corta, PVE, 90274. Docent available 10:00 am - 2:00 pm. Plaza parking limited.



## 1. MALAGA COVE SCHOOL (PVPUSD ADMINISTRATION)

● ARCHITECTURE

Malaga Cove School opened in 1926 with 35 students and was the first grammar school. Designed by prominent Los Angeles architectural firm Allison & Allison, the building received the American Institute of Architects award for the most notable school architecture in Southern California in 1925-26. The site became the District Offices in 2010. Tour the auditorium, now used for Board meetings.

375 Via Almar, PVE, 90274 • 9:30 am - 3:30 pm



## 35. MIRALETESTE LIBRARY

● CIVIC

The building was designed by architect Thomas J. Russell. The

wall of windows provides spectacular views. Originally a “station” library at Miraleste Elementary School in the 1950s, this building has served as a vital community hub since 1970. Visitors can tour the building, participate in an art project, and view a drought-tolerant year-round hummingbird and pollinator garden. Opens 9:00 am on June 17. Regular hours M-Th 10-6, F 2-6, Sat 10-5.

29089 Palos Verdes Drive East, RPV, 90275  
pvld.org • 310.921.7551

9:00 am - 5:00 pm. Limited parking.



## 36. MIRALETESTE PLAZA

● BUSINESS DISTRICT

Miraleste Plaza dates back to 1924 and is located in the heart of the scenic community of Miraleste in RPV. Miraleste was one of the original six residential planned communities of the Palos Verdes Project and today remains under the covenants of the Palos Verdes Homes Association & Art Jury. The area includes 300 acres with 377 homes, nature trails and panoramic views. Miraleste Homeowners Association will provide Miraleste's history and the creation of the Miraleste Parks District. Docents and photo exhibits available.

19 Miraleste Plaza, RPV, 90275  
10:00 am - 3:30 pm





# DOORS OPEN PENINSULA SITES

- |   |   |
|---|---|
| 1 Malaga Cove School (PVPUSD)                   | 38 Salvation Army College for Officer Training                |
| 2 Chowigna Indian Village Plaque                | 39 Rancho Palos Verdes City Hall                              |
| 3 Neighborhood Church of Palos Verdes           | 40 Los Angeles Defense Area Nike Missile Silo                 |
| 4 Palos Verdes Beach & Athletic Club            | 41 Battery Barnes   |
| 5 St. Francis Episcopal Church                  | 42 Hatano Farm Lookout  |
| 6 Frederick Law Olmsted Jr. Plaque              | 43 Point Vicente Interpretive Center                          |
| 7 Palos Verdes Homes Association                | 44 Point Vicente Lighthouse                                   |
| 8 Palos Verdes Estates Police Department        | 45 Terranea Resort  |
| 9 LA County Fire Department - PVE               | 46 Tongva Monument at Abalone Cove                            |
| 10 Malaga Cove Plaza Historic District          | 47 Wayfarers Chapel   |
| 11 Gardner Building Plaque                      | 48 Harden Gatehouse Plaque                                    |
| 12 Malaga Cove Library                          | 49 Villa Francesca Plaque                                     |
| 13 La Venta Inn                                 | 50 Portuguese Bend Whaling Station Plaque                     |
| 14 Palos Verdes Golf Club Plaque                | 51 First Japanese-American Farm on Peninsula at Founders Park |
| 15 Palos Verdes Estates Tennis Club             | 52 White Point Nature Education Center and Preserve           |
| 16 Palos Verdes Stables                         | 53 Point Fermin Lighthouse                                    |
| 17 Mirlo Gate Lodge Tower                       | 54 Cabrillo Marine Aquarium                                   |
| 18 Palos Verdes High School                     | 55 Muller House Museum  |
| 19 Lunada Bay Plaza Celebration Concert         | 56 Los Angeles Maritime Museum                                |
| 20 Beautify Lunada Bay                          |   |
| 21 Rolling Hills Estates City Hall              |   |
| 22 Crenshaw Horse Tunnel                        |   |
| 23 Peter Weber Equestrian Center                |   |
| 24 South Coast Botanic Garden                   |   |
| 25 Kelly's Korner (Rolling Hills General Store) |   |

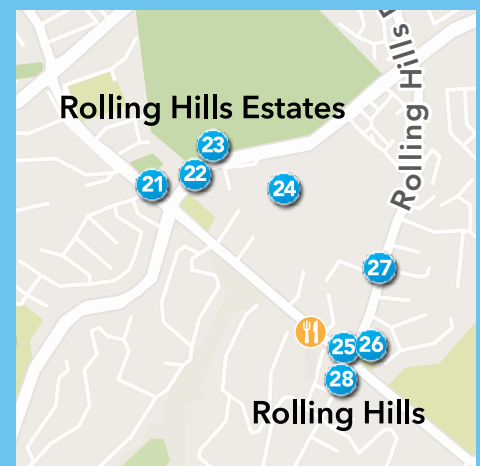
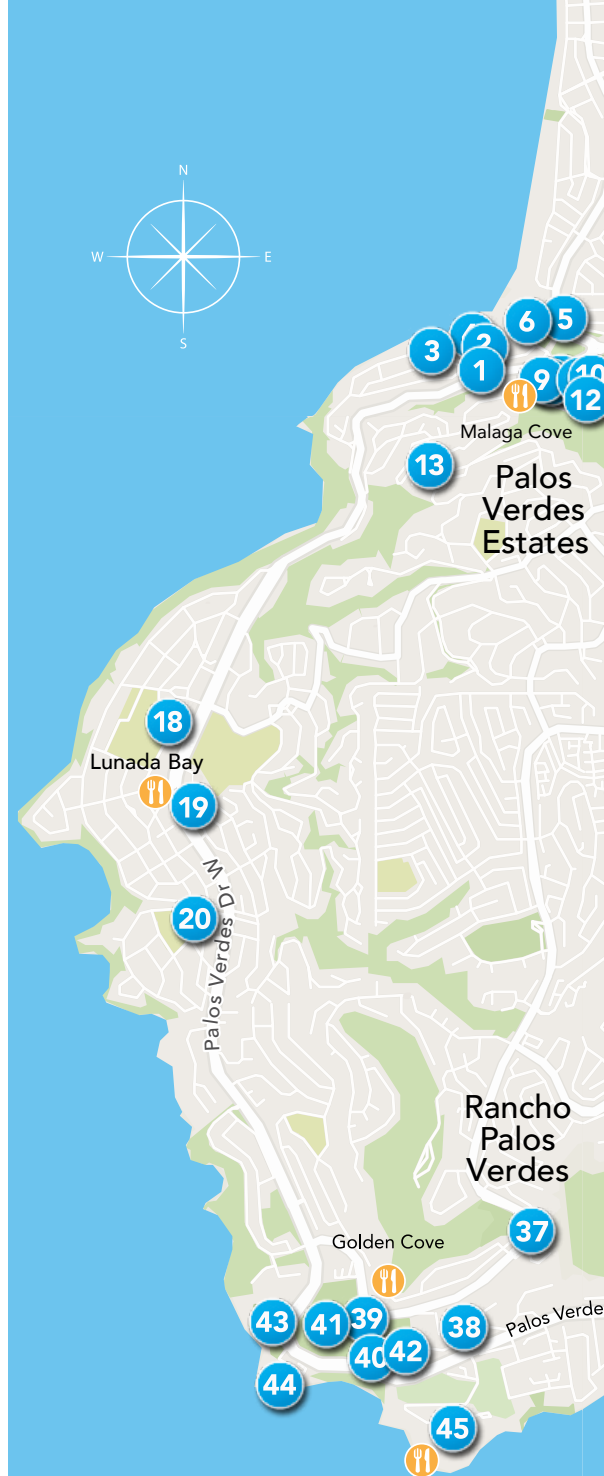
- |                                      |
|--------------------------------------|
| 26 Peninsula Heritage School         |
| 27 "The Farmery" Plaque              |
| 28 Rolling Hills Gatehouse Plaque    |
| 29 George F Canyon Nature Center     |
| 30 Chadwick School Plaque            |
| 31 Palos Verdes Flower Talking Clock |
| 32 Peninsula Center Library          |
| 33 Palos Verdes Art Center           |
| 34 Palos Verdes College Ruins        |
| 35 Miraleste Library                 |
| 36 Miraleste Plaza                   |
| 37 4th City Founders Plaque          |

## DOP SUPPORTER EATERIES

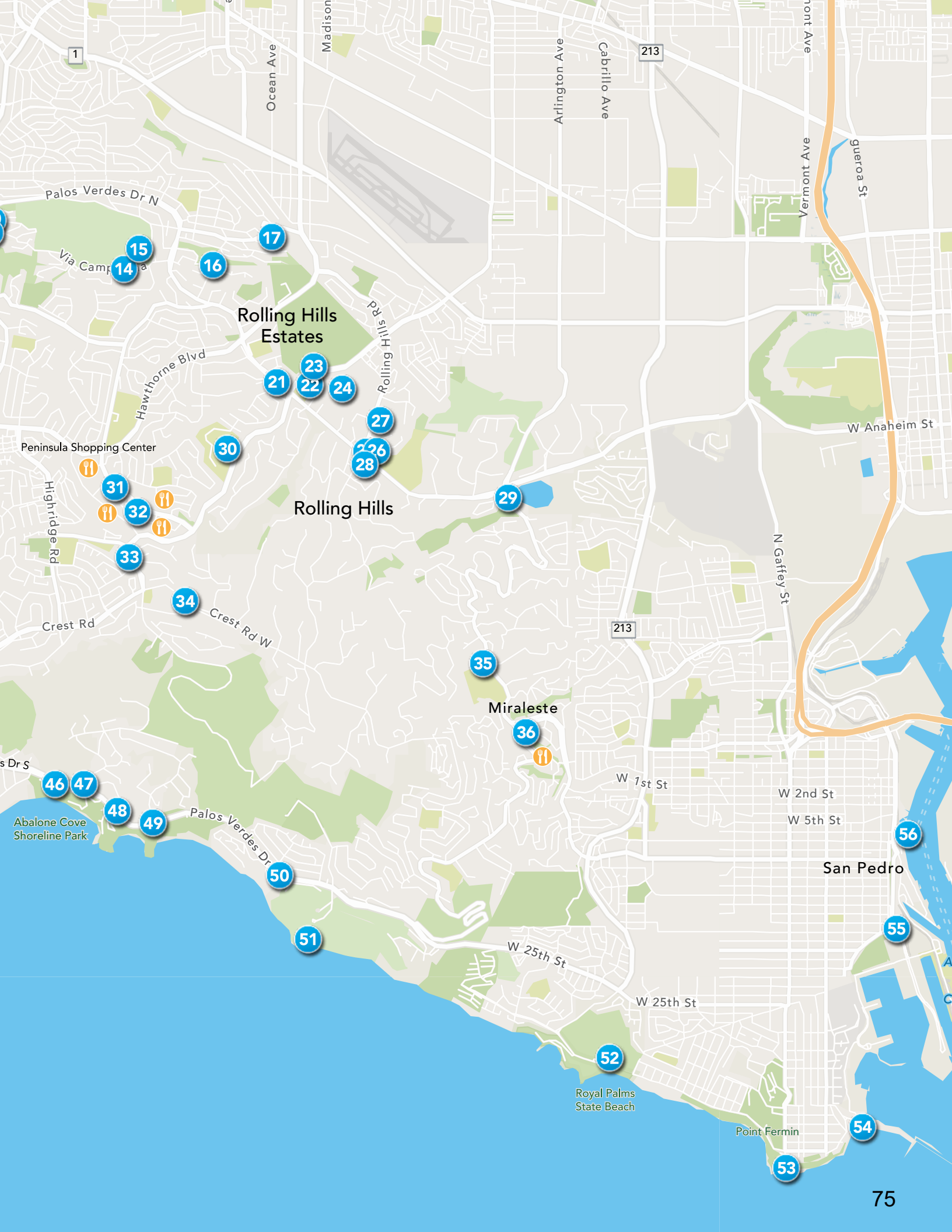
- Reverent (RHE)
- Pavilions (RHE)
- Original Red Onion (RHE)
- Promenade PV Shopping Mall (RHE)

## RESTAURANTS AND OTHER EATERIES LOCATED IN

- Malaga Cove (PVE)
- Lunada Bay (PVE)
- Golden Cove (RPV)
- Peninsula Shopping Center (RHE)
- Miraleste (RPV)







### 17. MIRLO GATE LODGE TOWER AKA "MIRLO GATE HOUSE"

● ARCHITECTURE

The entirely round Mirlo Gate Lodge Tower was designed in 1925 by architect Clarence E. Howard, known for his design of the reflecting pool at the Lincoln Memorial. Built in 1926 of PV stone, Mirlo is 508 sq. ft. and 18 ft. in diameter, and sits on 79,500 sq. ft. of Parklands hillside. Originally intended as a gated entrance (with living quarters), the tower was built as a part of the Palos Verdes Project. Mirlo Gate Lodge Tower is owned by the City of Palos Verdes Estates. Visitors can tour the inside of the structure.

4420 Via Valmonte, PVE, 90274

9:00 am - 4:00 pm

No parking. Shuttle available from Valmonte School parking lot (3801 Via La Selva, PVE). Roundtrip 25 minutes. Visitors must sign a liability waiver before entering.



### 55. MULLER HOUSE MUSEUM

● CULTURE & HISTORY

The Muller House Museum is owned and operated by the San

Pedro Bay Historical Society. It was the home of William A. Muller, a pioneer ship-builder in the Los Angeles Harbor. Built in 1899, the exterior features Colonial Revival embellishments, echoed inside through Muller's own skilled woodworking. The house is an LA Historical-Cultural Monument site. The Historical Society acquired the house in 1985 and after careful restoration opened in 1990. Visitors will have a docent-led tour and learn about the Muller family and San Pedro history. Tours last about 40 minutes. Second floor accessible by stairs only.

1542 S. Beacon Street, San Pedro, 90731

sanpedrobayhistoricalsociety.com

310.344.0713

Noon - 4:00 pm. Limited lot parking.

Street parking available. Photography of building interior not allowed.



### 3. NEIGHBORHOOD CHURCH OF PALOS VERDES ESTATES

● ARCHITECTURE

The Neighborhood

Church occupies the former mansion of a Los Angeles department store owner, John Joseph Haggarty. Completed in 1928, it was designed as an Italian Renaissance villa by Armand Monaco with 15,000 sq. ft. of living area and 32 rooms. It was landscaped by the Olmsted Brothers. Haggarty owned the home only 5 years and sold it in 1933 due to financial problems. After several owners, the Neighborhood Church purchased the property in 1950. Visitors will have docent-led tours of the building. Docent-led tours conducted throughout the year on Sundays at 11:00.

415 Paseo del Mar, PVE, 90274 • ncpve.org

June 17, 9:00 am - Noon

June 18, 11:00 am - 4:00 pm



### 33. PALOS VERDES ART CENTER

● CULTURE & HISTORY

Palos Verdes Art Center / Beverly G. Alpay Center for

Arts Education is a nonprofit community visual arts school and gallery. Founded in 1931 as the Palos Verdes Community Arts Association, the Art Center is one of the oldest visual art nonprofit organizations in Los Angeles County. Visitors will view work by art students from Southern California colleges and universities showcased in Palos Verdes Art Center's Alpay Scholarship Exhibition, Now Trending.

5504 Crestridge Road, RPV, 90275

pvcartcenter.org • 310.541.2479

10:00 am - 4:00 pm. Limited parking in lot.

Parking available on Crenshaw and Crestridge.



### 4. PALOS VERDES BEACH & ATHLETIC CLUB

● ARCHITECTURE

The Club, originally called Palos Verdes

Bathhouse and Beach Club, was designed by noted architect Kirtland Cutter and opened in 1930 as part of the Palos Verdes Project. In 1939, the newly incorporated City of Palos Verdes Estates assumed ownership from the

Palos Verdes Homes Association where it has remained one of the city's amenities. After years of disrepair in the 1970s and 1980s, the Club was rescued from demolition and restored by a group of dedicated residents. It reopened in 1993. Visitors can tour the 5-story clubhouse and facility.

389 Paseo del Mar, PVE, 90274

pvbac.net • 310.375.8777 • 9:00 am - 1:00 pm

No wheelchair accessibility;

ADA compliance pending.



### 34. PALOS VERDES COLLEGE RUINS

● CULTURE & HISTORY

A private liberal arts college, Palos Verdes College occupied this

site from 1947-1955. The College converted a complex of barracks buildings formerly used by the Army Air Force. The site was only temporary pending a large permanent campus. The Korean War (1950-1953) and a lack of funding caused the school to close. The site is now home to Palos Verdes Peninsula Unified School District's Rancho Del Mar Continuing High School and PV Transit Authority.

38 Crest Rd West, RH, 90274

8:30 am - 4:00 pm

Limited parking. Building remnants fenced off and visible from fence line near entrance.

### 8. PALOS VERDES ESTATES POLICE DEPARTMENT

● CIVIC

The City of Palos Verdes Estates is the

only Peninsula city with its own Police Department (PVPD). Police service began in 1924 when only a few homes were under construction. In 1929, there were only three officers. Today the PVEPD has 22 sworn officers and a number of support staff and volunteers to protect and provide vital services to the community. Visitors can tour the building, jail, shooting range, and see the PD's classic Car 54 and other vehicles, and meet the PD officers.

340 Palos Verdes Drive West, PVE, 90274

pvestates.org/home • 310.750.9788

9:00 am - 4:00 pm. Photography not allowed in Communications/Dispatch Center.





## 15. PALOS VERDES ESTATES TENNIS CLUB

### ● CULTURE & HISTORY

The Palos Verdes Tennis Club (PVTC) is one of the City of PVE's amenities. A private tennis and pickleball club, it has 11 lighted tennis courts, 8 lighted pickleball courts, a full-service pro shop, a locker room with showers, and a clubhouse. PVTC has a junior tennis academy for members and non-members. PVTC opened in 1963. The clubhouse was dedicated and presented to the City in 1970. July 2023 marks the PVTC's 60th anniversary. Visitors can take a self-guided tour. Regular hours are M-Sun 7:30 am - 10:00 pm.

3033 Via Campesina, PVE, 90274

[pvtenniscub.com](http://pvtenniscub.com) • 310.373.6326

Noon - 4:00 pm. Limited parking. Snacks and drinks available for purchase in Pro Shop. (Card only.)



“ The history of the Palos Verdes Project is the history of Palos Verdes Estates. On the 100th anniversary of the Palos Verdes Project, we celebrate the enduring vision of Frank Vanderlip Sr. and the Olmsted Brothers who transformed this breathtaking landscape into the thriving community we live in today. ”

— MAYOR ROOS, CITY OF PALOS VERDES ESTATES

## 31. PALOS VERDES FLOWER TALKING CLOCK

### ● CULTURE & HISTORY

The Talking Clock is the first Flower Talking Clock in the U.S. and was created and donated to the community by resident Michel Medawar in 1987. The heart of the clock is a Patek Philippe time base designed specifically for the talking clock invention and resulted from a collaboration between Medawar and the electronic division of Patek Philippe in the early 1960s. The clock announces the time on the hour. Visitors can visit the vault room housing the clock's mechanism and learn its history from the creator.

Promenade on the Peninsula,

550 Deep Valley Drive, RHE, 90274

Located near the intersection of Silver Spur and Norris Center Dr. • [medawarfinejewelers.com](http://medawarfinejewelers.com)

10:00 am - 3:00 pm. Parking available in the mall parking structure. No handicap accessibility. Steep stairs into the vault.



### [TOP TO BOTTOM]

The Palos Verdes Transportation Company started in 1925 to and from Redondo Beach, 1925.

Neptune Fountain dedication ceremony, 1930.

North entrance of Palos Verdes Estates, 1926.

Gardner building dedication ceremony, 1925.

Land Office No.1 near the entrance of Palos Verdes Estates, 1922.







“The City of Rolling Hills Estates is pleased to be a part of Doors Open Peninsula as we commemorate what was imagined 100 years ago to establish the high quality of life that our residents and businesses have come to enjoy. We honor this legacy as we celebrate the past, embrace the present, and look to the future of our special community.”

— MAYOR HUFF, CITY OF ROLLING HILLS ESTATES



#### 14. PALOS VERDES GOLF AND COUNTRY CLUB PLAQUE

● ARCHITECTURE

Palos Verdes Golf Club

opened on November 15, 1924. The golf course was designed and built by the renowned team of William P. “Billy” Bell and George C. Thomas, a classic example of the “Golden Age” of golf course design. The Spanish-style clubhouse was designed by Clarence E. Howard with original landscaping by Olmsted Brothers. In recent years, restoration and design improvements have been overseen by golf course architect Todd Ekenrode.

3301 Via Campesina, PVE, 90274

[pvgc.com](http://pvgc.com)

Interior unavailable June 17 due to construction. Limited parking.



#### 18. PALOS VERDES HIGH SCHOOL

● ARCHITECTURE

Completed in 1961, Palos Verdes High School was the

first public high school on the Peninsula. Designed by Richard Neutra and Robert Alexander with local architect Carrington Lewis, the plant includes a mix of Mid-Century modern and traditional gabled tile roofs and stucco walls. Neutra enthusiasts will recognize the classic “spider leg” metal supports on the canopies. Visitors are welcome to walk about the grounds.

600 Cloyden Road, PVE, 90274

Grounds open 8:30 am - 4:00 pm.



[TOP TO BOTTOM]

Ladies’ sun parlor at the Palos Verdes Golf Club, 1925.

Entrance to the Neighborhood Church, formerly the Haggerty Mansion, 1928.

Mirlo Gate Lodge at the entrance of Palos Verdes Estates, 1925.

Students on the first day of class at Malaga Cove School in the School’s third year, 1927.



## 7. PALOS VERDES HOMES ASSOCIATION

● CIVIC

The Palos Verdes Homes Association

and Art Jury were established in June 1923 to assure homeowners that the neighborhoods in Palos Verdes Estates and Miraleste can never be spoiled. It has been guiding property owners to bring about architectural integrity and building aesthetics while enhancing the wonderful natural beauty of the property, as laid out by our founders.

320 Palos Verdes Drive West, PVE, 90274  
pvha.org • Unavailable June 17.



## 16. PALOS VERDES STABLES

● CULTURE & HISTORY

Originally called the Riding Academy, the Palos Verdes Stables

were established in 1925 and were one of the community amenities started by the Palos Verdes Project. The Stables have a long history of comprehensive equestrian programs catering to every discipline of riding and any experience level. Trail program links to trails in PVE.

4057 Via Opatá, PVE, 90274

pv-stables.com

10:00 am - 1:00 pm • Parking available on Via Opatá and neighboring streets. Stables are a short walk up the driveway. No touching or feeding horses. Riding lessons may be in progress.



## 32. PENINSULA CENTER LIBRARY

● CIVIC

The original 32,000 sq. ft Peninsula Center Library was designed by

pioneers in “green” design, A. Quincy Jones and Frederick E. Emmons in 1967. In 1995, architects Zimmer, Gunsul, Fransca (ZGF) renovated and expanded the space, nearly doubling its size. Visitors can take self-guided tours and view the original architectural models for both design phases, public art integral to the Library redesign and exhibits on loan from the PV Historical Society. Opens at 9:00 am on June 17. Regular hours M-Th 10-8, F 2-6, Sat 10-5, Sun 1-5.

701 Silver Spur Road, RHE, 90274

pvld.org • 310.377.9584

Exhibit available 9:00 am - 3:00 pm on main floor and public art on floors 1-3.



## 26. PENINSULA HERITAGE SCHOOL

● CULTURE & HISTORY

Founded in 1961, Peninsula Heritage

School purchased its current location in 1976. The school provides a high-quality education to Kindergarten through 8th Graders with small class sizes infused with a character qualities program. The school’s ranch-style buildings include exteriors white “board and batten” design. The campus served as a school for children in the City of Rolling Hills, as a PVSD elementary school and as the City Hall for Rolling Hills Estates. One of the school’s buildings is the original “Boy Scout House.” The campus is included in RHE’s historic landmark overlay designation zone. Tours of this campus, historical image displays, and program brochures will be available.

26944 Rolling Hills Road, RHE, 90274

peninsulaheritage.org • 310.987.0145  
9:00 am - 2:00 pm



## 23. PETER WEBER EQUESTRIAN CENTER

● CIVIC

Established in the 1960s as a municipal

stables on land donated by RHE resident William Pearson, the Center was built on portions of the Palos Verdes landfill. Renamed in 2005 in honor of Peter Weber, a former RHE mayor, the Center specializes in boarding care, provides riding lessons and trail rides, and has a petting zoo. The Center has access to 90 miles of beautifully manicured trails. Off the beaten path, visitors can walk around the site and learn about RHE’s premiere equestrian center.

26401 Crenshaw Boulevard, RHE, 90274

pwecent.com • 310.365.7343

9:00 am - 5:00 pm

Limited parking. Parking available at City Hall a short walk from the Center. Dirt footing. Strollers OK. Petting zoo by appointment only. \$50 per ½ hour.



## 53. POINT FERMIN LIGHTHOUSE

● ARCHITECTURE

The Point Fermin Lighthouse was built in 1874 to light the

entrance to the growing Los Angeles Harbor. The building was restored and listed on the National Register in anticipation of its 100th birthday in 1974. In 2002, the Lighthouse opened to the public for the first time. The facility is part of the Los Angeles County’s Recreation and Parks Department.

807 W. Paseo del Mar, San Pedro, 90731

pflhs.org • 310.241.0684

Guided tours available at 1:00 pm, 2:00 pm and 3:00 pm. Limited parking. Food vendors are often at the front of the park.



## 43. POINT VICENTE INTERPRETIVE CENTER AND LOWER POINT VICENTE PARK

● CULTURE & HISTORY

This 26-acre site was formerly used by the United States Army as a rifle range. Known as Nike Site LA-55-Point Vicente Rifle Range, it was used for training primarily during the Cold War era. It was deactivated in 1974. The Interpretive Center opened in 1984 and expanded in 2006. Center exhibits highlight the history of the Peninsula and adjacent waters and includes the Pt. Vicente Lighthouse Fresnel Lens and a life-size baby gray whale model. Visitors can learn about the area’s unique geology, fossils, early artifacts, Tongva Indians, Japanese farmers, Spanish ranchers, offshore Portuguese whalers and early visionaries.

31501 Palos Verdes Drive West, RPV, 90275

rpvca.gov/facilities/facility/details/  
point-vicente-interpretive-center-13

310.544.5375

10:00 am - 5:00 pm

Gift Shop on site and docent led tours.



#### 44. POINT VICENTE LIGHTHOUSE

● ARCHITECTURE

Built in 1926 and operated by the U.S. Coast Guard, the

Lighthouse has been in continuous use helping ships navigate to and from the Ports of Long Beach and Los Angeles. It still flashes twice every 20 seconds and is a critical aid to navigation even in an electronic navigation and GPS world. Walk the grounds and view the Display Center in the building that originally housed the foghorn. Guests may learn about all 11 of the Coast Guard's missions, not just Aids to Navigation and Lighthouses. Walking tour, information brochures, and lighthouse stamp available. Docents available on the second Saturday of each month from 10:00 am - 3:00 pm.

31550 Palos Verdes Drive West, RPV, 90275  
9:00 am - 4:30 pm

Ample parking adjacent to Lighthouse property in dirt lot. No parking within Lighthouse gates. Handicapped parking available on site inside Lighthouse gates by talking to gate guard and showing handicapped placard. Lighthouse tower itself is closed. Dogs on leash OK; please scoop the poop. Bicycles OK; please walk or lock up.



#### 50. PORTUGUESE BEND WHALING STATION PLAQUE

● CULTURE & HISTORY

The cove at Portuguese Point was used as a

whaling station actively from 1860 to 1885. It was one of many such whaling stations along the California coast. Three of the original structures, the try-pots and crumbling furnaces remained until 1928. The area is now home to the Portuguese Bend Beach Club. Plaque located at Club entrance.

4100 Palos Verdes Dr. South, RPV, 90275  
Limited parking.



#### 39. RANCHO PALOS VERDES CITY HALL BUILDING COMPLEX

● CIVIC

This area was "tract 8" of the former Pt. Vicente Military Reservation established in 1942. In the 1950s, the complex became part of Los Angeles Area Defense Nike Battery #55, a system of defenses that used radar, missile launchers, guidance systems and computers. The City moved into the complex in 1975. The 71 acre site was formerly dedicated in 1979. The buildings and site are largely the same as when used by the military.

30940 Hawthorne Boulevard, RPV, 90275  
Rpvca.gov • Docent available 9:00 am - Noon.



#### 21. ROLLING HILLS ESTATES CITY HALL

● CIVIC

Designed by architect Corwin Eberting, construction on the post

& beam building, featuring walls of glass and Palos Verdes stone started in 1973. The building was dedicated in June the following year. The building features panel carved doors designed by mid-century artist Evelyn Ackerman. From incorporation in 1957 to the completion of the municipal buildings, the City used space on the grounds on what is now the Peninsula Heritage School. The white picket fencing is distinctive to the City. Visitors will be able to tour the building and learn about its history.

4045 Palos Verdes North, RHE, 90274  
rollinghillsestates.gov • 310.377.1577  
10:00 am - 3:00 pm



#### 28. ROLLING HILLS GATEHOUSE PLAQUE

● CIVIC

The plaque is located on the left just before the Rolling Hills gate. This unique city consists of three square miles of country estates with entry through four guarded gates. The area was originally developed and marketed as "dude" ranches with single story ranch-style homes. The Gatehouse with two Canary Palms was built in 1935.

On Portuguese Bend Rd near Palos Verdes Dr. North., RH.  
Limited parking at City Hall. Additional parking available RH Community Association.



#### 38. SALVATION ARMY COLLEGE FOR OFFICER TRAINING & USA WESTERN TERRITORIAL HEADQUARTERS

● CULTURE & HISTORY

The Salvation Army's 45-acre Crestmont facility was built in 1960 and was originally the campus of Marymount College. The original buildings were designed by Welton Beckett and Associates, architects of the Capitol Records building. The property was acquired by The Salvation Army in 1976. It is home to The Salvation Army's College for Officer Training (Seminary), an accredited two-year college, and is the headquarters of The Salvation Army in the Western United States (the USA Western Territory). Guided tours of site and history of College.

30840 Hawthorne Boulevard, RPV, 90275  
crestmont.edu • 562.491.8390  
9:00 am - 1:00 pm  
Light refreshments following tours.



#### 24. SOUTH COAST BOTANIC GARDEN

● ENVIRONMENT & URBAN PLANNING

South Coast Botanic Garden is one of the first botanic gardens in the world to be built on a sanitary landfill. The 87-acre area was used first as an open pit mine in the 1930s then a trash dump in the 1950s. From its visionary founder Francis Young, the Garden is now home to more than 2500 species of plants and provides unique exhibits and programming for all ages. Guests can enjoy Washed Ashore - Art to Save the Sea featuring 16 large-scale sculptures made from ocean waste (until September) and the annual butterfly exhibit.

26300 Crenshaw Boulevard, PV Peninsula, 90274  
southcoastbotanicgarden.org • 424-452-0920  
9:00 am - Noon • Parking limited.  
DOP stamp station available in parking lot.  
Garden entry fee required.





## 5. ST. FRANCIS EPISCOPAL CHURCH CHAPEL

### ● ARCHITECTURE

The Chapel was designed  
by architect Walter

Swindell Davis. It was completed and dedicated in July, 1952. The Chapel, according to the architect, “was designed after the churches found in the little hill towns surrounding Assisi, with Gothic arches framing the choir, sanctuary and altar”. The stained glass windows were gifted as memorials and all the wooden pews were fully subscribed as gifts in one afternoon. Visitors can visit the Chapel and learn more about its history.

2200 Via Rosa, PVE, 90275

stfrancispalosverdes.org • 9:00 am - 4:30 pm

Ample parking including handicap spots. Street parking is also available on Via Rosa. Light refreshments provided throughout the day.



“ The Palos Verdes Peninsula is a unique paradise in Los Angeles County with a history as rich as its natural beauty. It’s remarkable to look back at the early days of the Peninsula and see what it would become — the City of Rancho Palos Verdes is proud to be part of that story for the past 50 years.”

— MAYOR FERRARO, CITY OF RANCHO PALOS VERDES

## 45. TERRANEA RESORT

### ● CULTURE & HISTORY

Terranea opened in  
2009 and has welcomed  
guests and the local

community to celebrate the natural beauty and rich history of the Palos Verdes Peninsula. Honoring the legacies that shaped this scenic, coastal enclave, Terranea pays homage through a variety of ways, including the Marineland and Catalina Ballrooms, Sea Hunt-inspired Nelson’s, and luxurious Vanderlip Suite. The resort’s 102 acres provide opportunities to discover the native flora and fauna, local wildlife, and sightings of whales and dolphins. Visitors can explore the location with an oceanfront hike or scenic walk, and learn more about its history, including an exhibit on Marineland. Coral trees in and around the property were preserved from Marineland.

100 Terranea Way, RPV, 90725

terranea.com • 310.265.2851

9:30 am – 4:30 pm. Limited public parking lot available. Valet parking available. Marineland exhibit at Pointe Discovery, located at main entrance adjacent to Sea Beans coffee shop.



[TOP TO BOTTOM]

Shepherd Robert K. Boyd with band of Karakul sheep, ca. 1950.

Portuguese Point, Rancho Palos Verdes, 1926.

Group portrait in front of newly completed San Pedro Grower’s Association community buildings, 1923.

Pt. Vicente Lighthouse, ca 1926. (Image courtesy National Archives.)





“With its unparalleled blend of natural splendor, top-notch schools, and tight-knit community, Palos Verdes Peninsula is a haven for those seeking an extraordinary life for themselves and their children. Here, my children grew and learned in the nurturing embrace of excellent schools, a wonderful library system, and a thriving sports and recreation scene.

I am proud and grateful to call this place home.”

— MAYOR WILSON, CITY OF ROLLING HILLS



## 27. “THE FARMERY” PLAQUE

● CULTURE & HISTORY

This plaque commemorates the site of the first family home on the Palos Verdes Peninsula built by Harry Phillips, a ranch foreman for George Bixby hired in 1894. Phillips was responsible for overseeing the majority of land on the Peninsula, developing herds of cattle and instituting farming operations. Known as The Farmery, the Phillips family lived here until the early 1920s. Phillips planted the grove of eucalyptus in Palos Verdes Estates as a windbreak.

Located in gravel lot at intersection of Rolling Hills Road and Lariat Lane, RHE, 90274.



## 46. TONGVA MONUMENT AT ABALONE COVE PARK

● CULTURE & HISTORY

Designed with the Gabrieleño/Tongva San Gabriel Band of Mission Indians, this monument honors the Indigenous people of Los Angeles. The plaque was designed by artist and sculptor, Geri Jimenez Gould. Tom Steers, local resident and champion of the project, involved active tribe leaders and elders including Chief Anthony Morales, the late Tribal Council Elder Julia Bogany, Ms. Gould, and Jesus Gutierrez, who are both Tongva-descendant elders. The monument is located just south of the parking lot.

5970 Palos Verdes Drive South, RPV, 90275  
[rpvca.gov/Facilities/Facility/Details/Abalone-Cove-Park-1](http://rpvca.gov/Facilities/Facility/Details/Abalone-Cove-Park-1)

Dawn to dusk. One hour free parking for DOP visitors between 10:00 am - 2:00 pm, June 17.



[TOP TO BOTTOM]

Fire engines and police vehicles in parking lot of Peninsula Center Shopping Center, ca 1961.

Aerial view of future site of South Coast Botanic Garden, ca 1950.

Wayfarers Chapel interior, undated.

Horseback rider at Crenshaw Horse Tunnel, undated.

Iconic entrance sign of Marineland of the Pacific (now Terranea), ca. 1980s.





## 49. VILLA FRANCESCA PLAQUE

● ARCHITECTURE

This site was originally the estate of Harry

Benedict, an associate of Frank A. Vanderlip, Sr. and a major contributor to the development of the Palos Verdes Project and Palos Verdes. He served as a Director and President of Palos Verdes Corporation until 1954. Designed by Gordon B. Kaufman, the gatehouse and farmstead were completed in 1930. The name Villa Francesca honors Mrs. Frances Homberg Benedict, Harry's first wife.

*At the intersection of Peppertree Drive and Palos Verdes Drive South, RPV, 90275. No parking. Structure is a private residence.*



[TOP TO BOTTOM]

*Palos Verdes Newspaper building at 27900 Silver Spur Road and Beechgate Drive, 1963.*

*Rolling Hills General Store, now Kelly's Korner, 1975.*

*Point Fermin Lighthouse, undated.*

*Christmas Tree Cove with Point Vicente Lighthouse in the distance, 1926.*



## 47. WAYFARERS CHAPEL

● ARCHITECTURE

When completed in 1951, the Chapel stood alone with no trees or

other structures. Today, it is a "tree chapel." The cathedral-like majesty of the redwood trees in northern California inspired Chapel architect Lloyd Wright. The redwood trees that surround Wayfarers Chapel form living walls and roof to a natural sanctuary encased in glass with views of the surrounding forest and nearby Pacific Ocean. These are typical traits of Organic Architecture, which aims at using nature as the framework and regards the space inside as sacred. Lloyd Wright's design of Wayfarers Chapel is the perfect combination of nature and architectural genius and is one of the foremost examples of organic architecture.

5755 Palos Verdes Drive South, RPV, 90275  
wayfarerschapel.org • 310.377.1650

*Not available June 17. See Visitors Guidelines on website. Self-guided tour brochures available.*



## 52. WHITE POINT NATURE EDUCATION CENTER AND PRESERVE

● ENVIRONMENT & URBAN PLANNING

Located on a restored 102-acre nature preserve, visitors can enjoy historical structures and scenic trails through restored natural lands. This educational facility is surrounded by a native plant demonstration garden where family activities and special events are presented to the public. It is housed in a repurposed Cold War missile assembly building and includes multimedia exhibits that move visitors through the timeline of White Point's cultural and natural history from the Pleistocene age to the present. The Preserve is owned by the City of LA and managed by the Palos Verdes Peninsula Land Conservancy. Guided hikes around the Preserve's restored coastal sage habitat and military history sites start at 10:30 am.

1600 W. Paseo Del Mar, San Pedro, 90731  
pvplc.org • 10:00 am - 3:30 pm





# Why Malaga Bank?

**SAFE SOUND LOCAL**



You deserve...  
a true community partner

Every day at Malaga Bank you'll be treated like a VIP, whether it's by the president of our bank or another one of our experienced employees. We're proud that our community-centered culture at Malaga Bank has enabled us to contribute to the South Bay's economic growth and unique business identity for so many years. As a full-service community bank, we have been serving the financial needs of the South Bay community by providing competitive banking products and services for personal and business banking since 1985.

Experience the difference today and "bank local" with the bank that is a part of your community.



2514 Via Tejon, PVE, 90274 T 310.375.9000  
27450 Hawthorne Blvd., RHE, 90274 T 310.541.3000  
25700 Crenshaw Blvd., Torrance, 90505 T 310.784.2000  
23670 Hawthorne Blvd., Ste. 101, Torrance, 90505 T 310.544-5180  
1460 West 25th St., San Pedro, 90732 T 310.732.1100

[www.malagabank.com](http://www.malagabank.com)





# NEWS RELEASE



313 N. Figueroa Street, Room 806 | Los Angeles, CA 90012 | (213) 240-8144 | [media@ph.lacounty.gov](mailto:media@ph.lacounty.gov)

313 N. Figueroa Street, Room 806 | Los Angeles, CA 90012 | (213) 240-8144 | [media@ph.lacounty.gov](mailto:media@ph.lacounty.gov)



For Immediate Release:

**June 21, 2023**

## **Simple Steps Can Help Prevent West Nile Virus and Other Mosquito-Borne Disease**

As spring days become warmer - and mosquitos more common - the Los Angeles County Department of Public Health advises all residents to take precautions now to help prevent mosquito-borne diseases.

Illnesses such as West Nile virus and Saint Louis Encephalitis virus can be spread through the bite of an infected mosquito here in Los Angeles County. Public Health recommends the following actions to reduce the risk of West Nile virus and other mosquito-borne disease infections:

- Take steps to control mosquitoes indoors and outdoors:
  - Use screens on windows and doors. Check for, and repair, holes in screens to keep mosquitoes outdoors.
  - Stop mosquitoes from laying eggs in or near standing water. Once a week, empty and scrub, turn over, cover, or throw out items that hold water, such as tires, buckets, planters, toys, pet bowls, flowerpot saucers, rain barrels, or other containers. These are places where mosquitoes lay eggs.
  - Empty and wash birdbaths and wading pools weekly.
  - Clean and chlorinate swimming pools; drain any water collecting on pool covers.
  - Stock garden ponds with fish that eat mosquitos such as mosquitofish, goldfish, or koi. These feed on mosquito eggs and larvae.
- Avoid outdoor activities at dusk and dawn during warm mosquito season when mosquitoes are most active.
- Use insect repellent. Choose Environmental Protection Agency (EPA)-registered repellents containing DEET, picaridin, IR3535, oil of lemon eucalyptus (OLE), para-menthane-diol (PMD), or 2-undecanone. When used as directed, EPA-registered insect repellents are proven safe and effective, even for pregnant and breastfeeding women. Find the right insect repellent for you by using EPA's [search tool](#).
- Cover up. Wear long-sleeved shirts and long pants when you are outdoors, particularly at dusk and dawn, and in areas, where more mosquitoes are present, such as ponds with stagnant water.
- Report stagnant swimming pools or "green pools" to the Public Health Environmental Health Bureau at (888) 700-9995, or to a local vector control agency.
- Dead birds should be reported to the California West Nile Virus Dead Bird Hotline at (877) 968-2473 or online: <https://westnile.ca.gov/report.php>

"The best ways to prevent West Nile virus infections and other mosquito-borne diseases is to take steps now to eliminate mosquito breeding spots and to protect our families from bites," said Dr. Barbara Ferrer, Ph.D., M.P.H., M.Ed., Director of the Los Angeles County Department of Public Health. "Because there are no vaccines to prevent West Nile, or a treatment to cure this disease, we can all follow simple steps to reduce the risk of West Nile virus including removing standing water around our homes and avoiding mosquito-infested areas at dawn and dusk."

### **About West Nile Virus**

West Nile virus is the leading cause of mosquito-borne disease in the continental United States and each year cases are detected among residents in Los Angeles County.

While everyone is at risk for West Nile virus, people over age 50 and those with health problems are at greater risk of serious illness. West Nile virus can affect the nervous system and result in meningitis, encephalitis, limb paralysis and even death.

Symptoms may include fever, headache, nausea, body aches, and a mild skin rash. Severe symptoms include high fever, muscle weakness, neck stiffness, confusion, as well as coma.

While not all mosquitoes carry West Nile virus, the type of mosquito that spreads this virus is found throughout Los Angeles County, and across the state.

For more information on West Nile virus, visit [publichealth.lacounty.gov/media/westnile](http://publichealth.lacounty.gov/media/westnile). To find a local vector control district that helps protect residents from mosquitos, visit <http://www.socalmosquito.org>.

For more information:

---

#####



**DRAFT AGENDA  
RANCHO PALOS VERDES PLANNING COMMISSION  
TUESDAY, JUNE 27, 2023  
FRED HESSE COMMUNITY PARK, 29301 HAWTHORNE BOULEVARD  
REGULAR MEETING  
7:00 P.M.**

**\*HYBRID PLANNING COMMISSION MEETING**

The Regular Meeting of June 27, 2023 will take place in accordance with the requirements of the Ralph M. Brown Act, Section 54950 et seq. of the Government Code. Remote participation by any Committee/Commission member shall be in accordance with Subdivisions (b)(3) or (f) of Government Code Section 54953. The meetings are held at Hesse Park, McTaggart Hall, 29301 Hawthorne Boulevard and/or via teleconference for staff/consultants/participants using the Zoom platform and broadcast live on the City's website at [rpvca.gov/agendas](http://rpvca.gov/agendas) and on PVPTv channels Cox 35 and Frontier FiberOptic 39. Public participation will be in person and using the virtual platform.

NEXT P.C. RESOLUTION NO. 2023-08

---

**CALL TO ORDER:**

**PLEDGE OF ALLEGIANCE:**

**ROLL CALL:**

**APPROVAL OF AGENDA:**

**COMMUNICATION:**

City Council Items:

Staff:

Commission:

**COMMENTS FROM THE AUDIENCE (regarding non-agenda items):**



## **CONSENT CALENDAR:**

1. APPROVAL OF THE May 23, 2023 P.C. MINUTES

## **CONTINUED PUBLIC HEARINGS:**

2. MAJOR GRADING PERMIT, VARIANCE, SITE PLAN REVIEW, AND ENCROACHMENT PERMIT- (CASE NO. PLGR2022-0032): 28160 Palos Verdes Drive East (AS)

Request: Construct a new 4,813 ft<sup>2</sup>, three-story, single-family residence and ancillary site improvements with 1,601 yd<sup>3</sup> of associated grading on a vacant lot.

### Recommendation:

- 1) Review the Applicant's project revisions in response to the Planning Commission's feedback at the March 28, 2023 meeting; and,
- 2) If the project revisions are acceptable, adopt P.C. Resolution No. 2023-\_\_: approving a Major Grading Permit, Variance, Site Plan Review and Encroachment Permit for the construction of a new 4,813 ft<sup>2</sup> (garage included), 3-story, single-family residence and ancillary site improvements with 1,601 yd<sup>3</sup> of associated grading on a vacant lot, subject to the Conditions of Approval contained in the attached Exhibit "A".

Action Deadline: June 27, 2023

CEQA: Categorically Exempt (§15303 – new construction)

## **CONTINUED BUSINESS:**

NONE

## **NEW PUBLIC HEARINGS:**

NONE

## **NEW BUSINESS:**

### 3. PLANNING COMMISSION WORK PLAN: Citywide (OS)

Review and discuss items to be included in the Planning Commission's Biannual Report to the City Council.

#### **ITEMS TO BE PLACED ON FUTURE AGENDAS:**

4. PRE-AGENDA FOR THE MEETING ON JULY 11, 2023
5. PRE-AGENDA FOR THE MEETING ON JULY 25, 2023

#### **ADJOURNMENT:**

##### **Planning Commission Agendas and Staff Reports:**

Agendas and staff reports are available for public review no later than 72 hours before the meeting at City Hall, 30940 Hawthorne Boulevard during regular business hours, 7:30 A.M. to 5:30 P.M. Monday – Thursday and 7:30 A.M. to 4:30 P.M. on Friday; Hesse Community Park, 29301 Hawthorne Boulevard during the Planning Commission meeting; and on the City's website [www.rpvca.gov](http://www.rpvca.gov).

Materials related to an item on an agenda submitted after distribution of the agenda packet are available for public inspection at the front counter of the Planning Division Lobby at City Hall, which is located at 30940 Hawthorne Boulevard, Rancho Palos Verdes during normal business hours, and electronically on the City's website at [www.rpvca.gov/agendas](http://www.rpvca.gov/agendas).

##### **Public Correspondence:**

We highly encourage written materials regarding Planning Commission Agenda items be submitted no later than 4:00 P.M. the Monday prior to a Planning Commission meeting to allow the Planning Commission Members ample time to review and consider the issues raised prior to making decisions at the Planning Commission meeting. Please keep in mind that it is difficult for Planning Commission Members to carefully review materials submitted after that deadline or at the meeting. Written materials, including emails, submitted to the city are public records and may be posted on the City's website. Accordingly, you may wish to omit personal information from your written materials or oral presentation as it may become part of the public record regarding an agenda item. In addition, City meetings may be televised and may be accessed through the City's website at [www.rpvca.gov/agendas](http://www.rpvca.gov/agendas).

##### **Public Participation:**

Participants must speak from the podium using the lectern microphone; comments are to be directed to the Planning Commission and not to the staff or the public; repetition should be avoided; and reading a submission that has been copied or contained in the agenda will be discouraged. Virtual participation is also offered please visit [www.rpvca.gov/participate](http://www.rpvca.gov/participate).

##### **Public Comments:**

The Planning Commission may limit the public input on any item based on the number of people requesting to speak, the length of the agenda, or the business of the Planning Commission.

##### **Conduct at the Planning Commission Meeting:**

Pursuant to GC 54957.95: (a)(1) In addition to authority exercised pursuant to Sections 54954.3 and 54957.9, the presiding member of the legislative body conducting a meeting or their designee may remove, or cause the removal of, an individual for disrupting the meeting. (2) Prior to removing an

individual, the presiding member or their designee shall warn the individual that their behavior is disrupting the meeting and that their failure to cease their behavior may result in their removal. The presiding member or their designee may then remove the individual if they do not promptly cease their disruptive behavior. This paragraph does not apply to any behavior described in subparagraph (B) of paragraph (1) of subdivision (b)(1) means engaging in behavior during a meeting of a legislative body that actually disrupts, disturbs, impedes, or renders infeasible the orderly conduct of the meeting and includes, but is not limited to, one of the following: (A) A failure to comply with reasonable and lawful regulations adopted by a legislative body pursuant to Section 54954.3 or any other law. (B) Engaging in behavior that constitutes use of force or a true threat of force.(2) "True threat of force" means a threat that has sufficient indicia of intent and seriousness, that a reasonable observer would perceive it to be an actual threat to use force by the person making the threat.

**Time Estimates:**

The time noted next to an agenda item is only an estimate of the amount of time that will be spent during the meeting on that particular item. Accordingly, these estimates should not be relied on in determining when a matter will be heard, especially since agenda items are often re-ordered during a meeting and may be discussed at any time.

**Continuation of Meeting:**

The Planning Commission will adjourn its meetings on or before 11:00 p.m. and will not consider new business items after 10:15 p.m., unless a majority of the Planning Commission members who are present affirmatively vote either to extend the meeting after 11:00 p.m. or to consider new business after 10:15 p.m. If the meeting ends before all items listed on the agenda are completed, any unfinished business will be continued to the next succeeding day that is not a holiday, at a location to be determined.

**Closed Session:**

Please be advised that, pursuant to the Ralph M. Brown Act, "a person may not disclose confidential information that has been acquired by being present in a Closed Session . . . to a person not entitled to receive it, unless the legislative body authorizes disclosure of that confidential information." (Gov. Code § 54963(a).) "[C]onfidential information" means a communication made in a Closed Session that is specifically related to the basis for the legislative body of a local agency to meet lawfully in Closed Session . . ." (Gov. Code § 54963(a).) Please be further advised that any "violation of [Government Code § 54963] may be addressed by the use of such remedies as are currently available by law, including, but not limited to: (1) injunctive relief to prevent the disclosure of confidential information prohibited by this section; (2) disciplinary action against an [public or city official] who has willfully disclosed confidential information in violation of this section; (3) referral of a member of a legislative body who has willfully disclosed confidential information in violation of this section to a grand jury." (Gov. Code § 54963(c).)

**Americans with Disabilities Act:**

In compliance with the Americans with Disabilities Act, if you require an accommodation to participate in this meeting, please contact the City Clerk's Office prior to the meeting at: [cityclerk@rpvca.gov](mailto:cityclerk@rpvca.gov); by phone at 310-544-5217; or mail 30940 Hawthorne Blvd., Rancho Palos Verdes, CA 90275. The City's reasonable accommodation policy is available for review on the City's website ([see City Council Policy 58](#)). Please note that for accommodations that are not readily available, you should make your request as soon as you can prior to the time of the meeting.

**CEQA Compliance (Changes as of 11/7/22):**

Unless stated otherwise on the agenda, every item on the agenda is exempt from CEQA Guidelines Sections 15060(c), 15061(b)(3), 15273, 15378, 15301, 15323 and/or Public Resources Code Section 21065.