

previously reported, Staff is concerned about the Regional Council-approved Draft RHNA Methodology because it requires City of Rancho Palos Verdes to provide a total of **619 housing units** during the 2021-2029 RHNA planning period. Staff is in the process of preparing an objection letter for HCD's consideration and will continue to monitor the development of the RHNA methodology and provide necessary updates.

Underground Utility Work Starts at Trump National: On November 5<sup>th</sup>, Trump National Golf Club obtained an encroachment permit from the Public Works Department to start work on underground utilities (sewer lines) for Tract No. 50666, which is located in the vicinity of the driving range. Please click [here](#) to view the encroachment permit. This work began on Monday, November 18<sup>th</sup> and will necessitate the temporary closure of some trails around the driving range area. Notifications were sent to Trump National listserv subscribers on November 16<sup>th</sup>, and information regarding the construction and trail closures was posted on the City's Nextdoor page on November 18<sup>th</sup>. The work is expected to take at least 3 weeks to complete.

Lexus LaceUp Palos Verdes Half-Marathon, 10K and 5K Follow-Up: On Saturday, November 16<sup>th</sup>, the Lexus LaceUp Palos Verdes Half-Marathon, 10K and 5K took place. Councilmember Dyda was in attendance to welcome the runners. Staff from Community Development and the City's maintenance contractor, Stay Green, were also in attendance to ensure compliance with the Conditions of Approval, and we are pleased to report that the race was held with no major issues reported. A follow-up meeting was held on Monday November 18<sup>th</sup> with City Staff and the race organizers to discuss this year's event, and to start planning for the 2020 event.

No Construction Work on Thanksgiving Day: Thursday, November 28<sup>th</sup> is a legal holiday (Thanksgiving Day). Residents, businesses and contractors are reminded to obtain a Special Construction Permit by the close of business (i.e., 5:30 PM) next Monday, November 25<sup>th</sup> if construction work is proposed on this day (permits will only be considered for non-equipment activities). Click [here](#) to download the Special Construction Permit application.

Please note that minor repairs, maintenance and landscaping activities (i.e., work that does not otherwise require a building permit) are not prohibited on legal holidays. Also, please note that Friday, November 29<sup>th</sup> is not a legal holiday, so construction work is permitted on that day without a Special Construction Permit. For additional information, please contact the Community Development Department at 310-544-5228 or [planning@rpvca.gov](mailto:planning@rpvca.gov).

Peafowl Trapping Update: For this week, 4 birds were trapped, resulting in a total of 40 birds trapped to date. The City documents weekly trapping activity on the City's website at the following link: <https://www.rpvca.gov/1253/Peafowl-Activity-Report>.

November 13<sup>th</sup> LAX/Community Noise Roundtable Meeting Summary: At the November 13<sup>th</sup> Roundtable meeting, Los Angeles World Airport (LAWA) Staff reported 300 passenger jet Peninsula overflights in September 2019, which represents a decrease compared to the year's peak of 452 overflights in June 2019 (see attachment). During Roundtable Member Discussion, Rancho Palos Verdes (RPV) Staff requested an action item be placed on the January 8, 2020, Roundtable meeting agenda to request a Letter of Agreement between air

traffic control centers in San Diego (TRACON SCT) and Palmdale (Los Angeles Center ZLA). The purpose of this Letter would be to request that air traffic controllers—when necessary for safety or operational efficiency—vector passenger jets east of the HOLTZ waypoint when flying the OSHNN route, which would reduce or eliminate overflights of the Peninsula. The Letter will allow controllers to leave aircraft on the route, emphasizing noise abatement over expediting aircraft. LAWA Staff introduced the LAX Fly Quieter Program, which is an initiative to recognize downwind arrival passenger and freight carriers. RPV Staff requested that LAWA Staff consider ways to incorporate the noise concerns of the Peninsula after the LAX Fly Quieter Program is established.

Although the focus of the Roundtable is minimizing noise concerns generated from LAX passenger jets, RPV Staff relayed RPV citizen noise complaints regarding general aviation aircraft during the Roundtable Member Discussion. The Roundtable affirmed that the FAA requires fixed-wing aircraft to fly a minimum 1,000 feet above RPV, and if citizens observe violations, they should contact the Long Beach Flight Standards Office at 562-377-5400.

The next regular-scheduled Roundtable meeting is Wednesday, January 8<sup>th</sup> at 6:30 PM at the Los Angeles International Airports (LAX) Clifton A. Moore Administration Building, located at 1 World Way.

Upcoming BlueBeam Training: On Thursday, November 21<sup>st</sup> and Monday, November 25<sup>th</sup>, several Community Development Staff members will be attending all-day, off-site training in the use of BlueBeam, a software application that allows Staff to review plans electronically. With Community Development moving increasingly toward the paperless processing of permits, it is important for all Staff members to be conversant in the use of this technology. However, we have also ensured sufficient department and public counter staffing on both training days so that customer service will not be adversely affected.

November 26<sup>th</sup> Planning Commission Meeting Canceled: As a reminder, the regular Planning Commission meeting of November 26<sup>th</sup> has been canceled due to a lack of agenda items. The next regularly-scheduled Planning Commission meeting is set for December 10<sup>th</sup> at 7:00 PM at Hesse Park, 29301 Hawthorne Blvd., Rancho Palos Verdes, CA 90275.

Attachments:

SCAG letter to HCD – Page 36

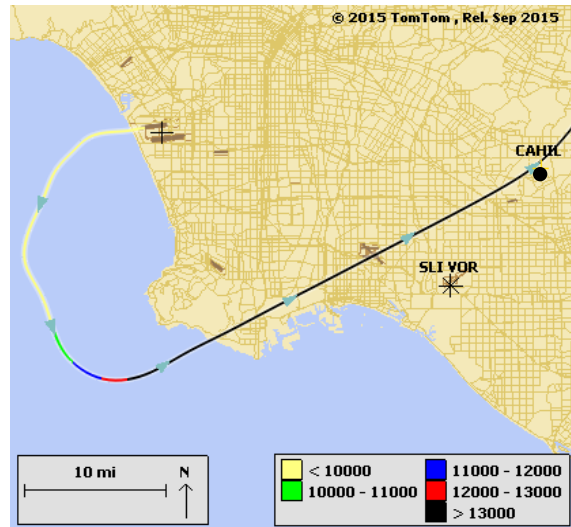
Passenger jet Peninsula overflight data for September and October, 2019 – Page 38

**RECREATION & PARKS**

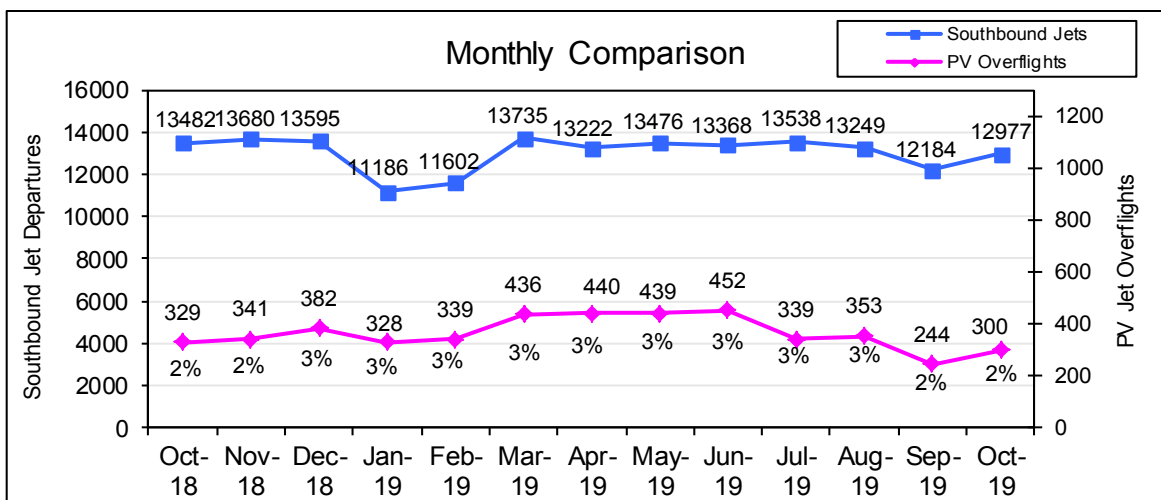
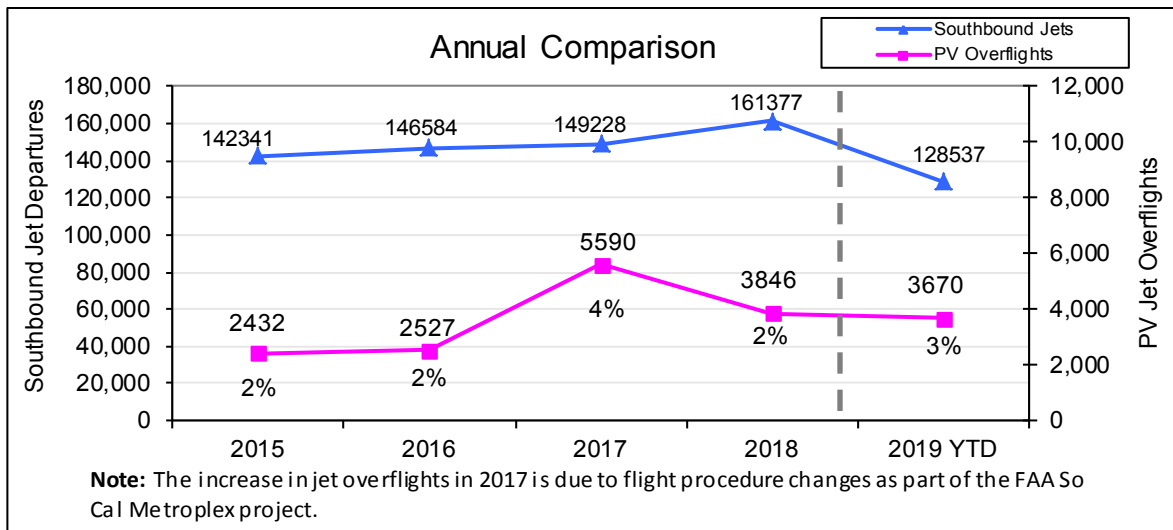
Hesse Park: The facilities are rented this week for fifteen indoor recreation classes, two non-profit group rentals, two Peninsula Seniors activities, one Scout rental, and two private rentals. On Wednesday, November 13<sup>th</sup>, the Palos Verdes Library District hosted their monthly Little Critters Afternoon Tales at Hesse Park. The next Little Critters Afternoon Tales will be held on December 11<sup>th</sup>.

# Palos Verdes Peninsula – Jet Overflights

Sample Jet Departure Flight Track Over PV Peninsula



The graphs below show the total number of jets turning south upon departure from LAX and the number of those departures that fly over the Palos Verdes Peninsula.



## Jet Altitudes over PV Peninsula

