

COMMUNITY DEVELOPMENT DEPARTMENT

Marymount Neighborhood Advisory Committee (NAC) Meeting

On Friday, July 10, 2020, the NAC held its spring term meeting. The NAC is comprised of members from the surrounding five homeowners associations and two at-large representatives who live within 3,000 feet of the campus. The NAC is tasked to meet once during the fall term and once during the spring term, to review any campus operational and neighborhood concerns. Please click [here](#) for the meeting agenda and [here](#) for the summary report. The next NAC meeting is tentatively scheduled for November 9, 2020.

Accessory Dwelling Unit (ADU) Code Update

On July 14, 2020, Staff presented a proposed draft ADU ordinance to the Planning Commission for their review and eventual recommendation to the City Council. Due to the length of the discussion and several questions that were raised about some proposed updates to the code, the item was continued to the July 28, 2020, Planning Commission meeting.

July 8 LAX Community Noise Roundtable Virtual Meeting Summary

The Los Angeles World Airports (LAWA) staff provided the City of RPV with statistical updates on vectored passenger jet Peninsula overflights. The attached charts are the update period from March 1, 2020, to June 30, 2020, showing a decrease from 445 vectored overflights in March to 76 in June (attached). Based on the March 11, 2020 Roundtable presentation (click [here](#)), the Roundtable directed the Facilitator to write a letter to send to representatives in support of proposed federal bills on aircraft noise issues such as noise and environmental impacts, increasing community involvement and FAA transparency. For more information from LAWA staff about their Roundtable meetings, including agendas, minutes, and other materials, visit their website by clicking [here](#).

Planning Commission Follow-up Agenda

See attached follow-up agenda from the Planning Commission meeting on Tuesday, July 14, 2020.

Attachments:

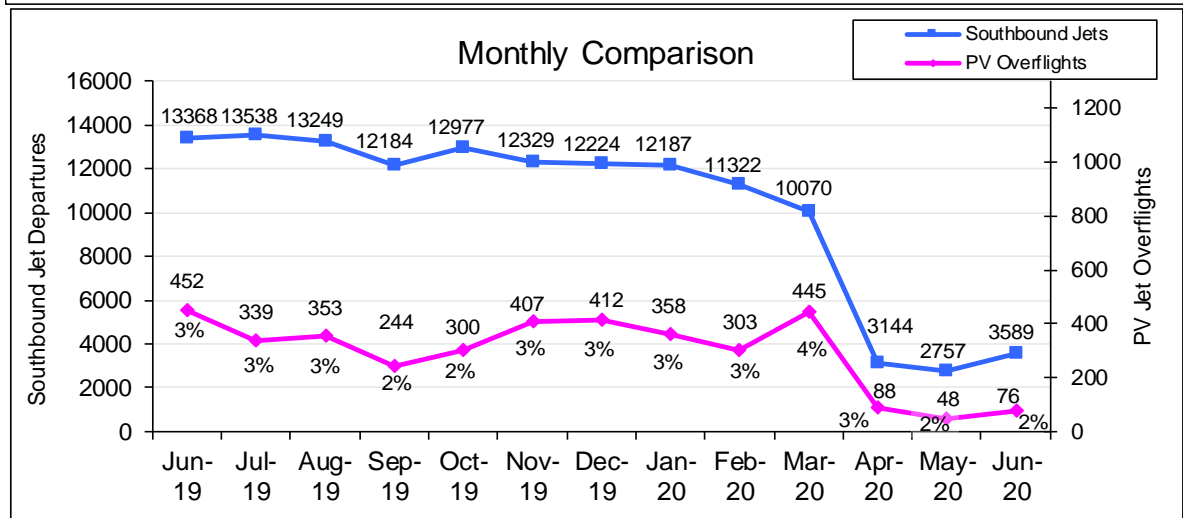
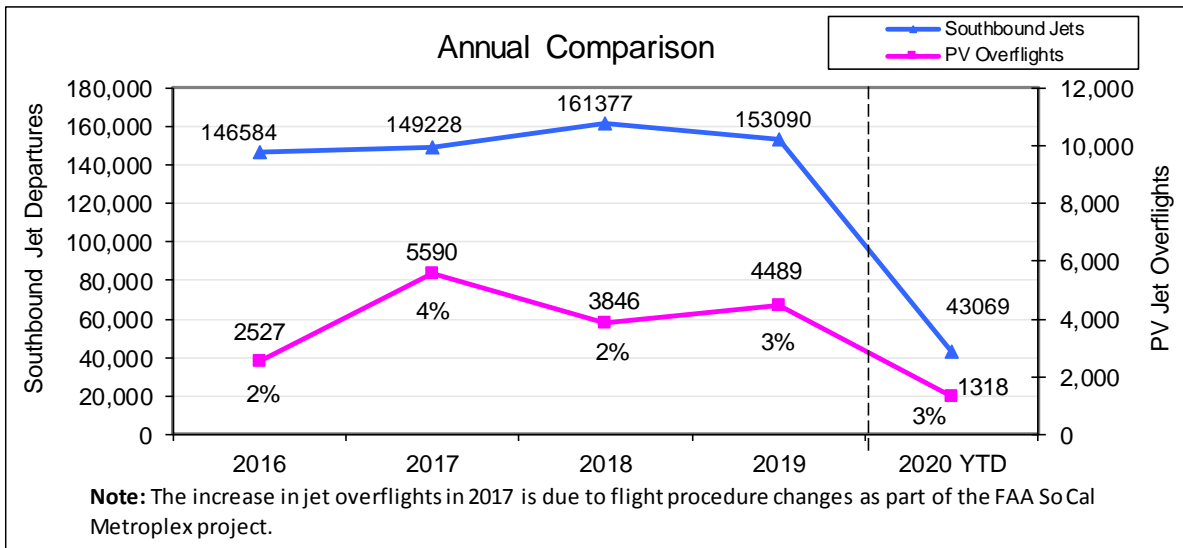
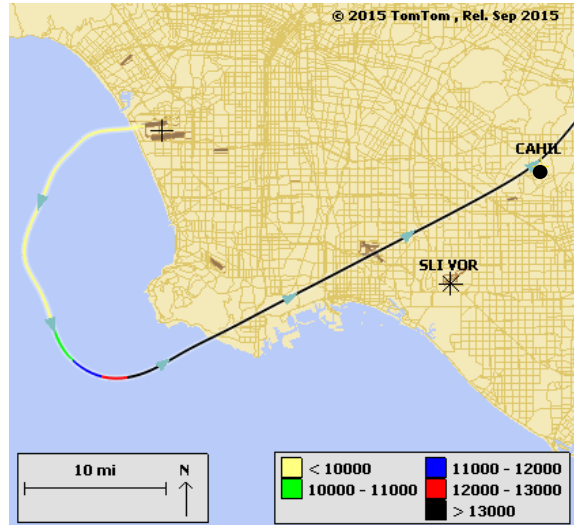
LAWA Vectored Passenger Jet Peninsula Overflight Charts between March-June 2020 –
Page 43

P.C. Follow-up Agenda for Tuesday, July 14, 2020 – Page 45

Palos Verdes Peninsula – Jet Overflights

The graphs below show the total number of jets turning south upon departure from LAX and the number of those departures that fly over the Palos Verdes Peninsula.

Sample Jet Departure Flight Track Over PV Peninsula



Jet Altitudes over PV Peninsula

