

## COMMUNITY DEVELOPMENT DEPARTMENT

### California Water (Cal-Water) Service Foliage Trimming

On Tuesday, December 1, 2020, Cal-Water conducted foliage trimming of its operation and maintenance yard located at 5837 Crest Road. Pursuant to P.C. Resolution No. 2018-01, foliage on the site is required to be trimmed on an annual basis in order to minimize any significant view impairments as seen from the adjacent residential properties.



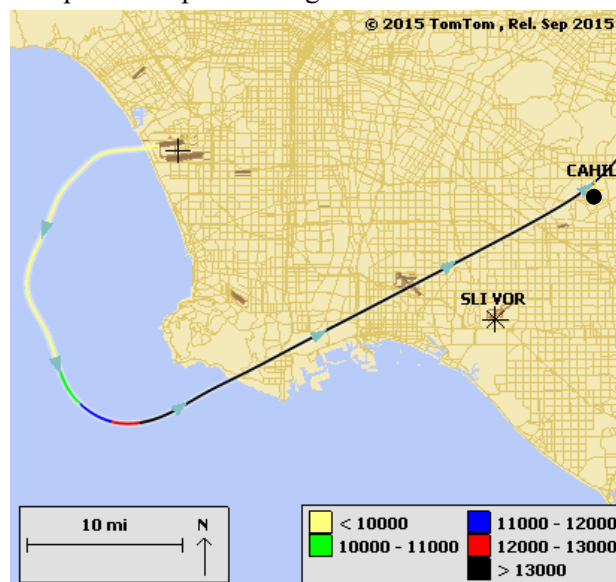
### LAX Community Noise Roundtable Virtual Meeting Summary

On November 18, 2020, City staff attended an LAX Community Noise Roundtable virtual meeting, in which staff noted receiving occasional noise complaints from general aviation aircraft. The area over the ocean adjacent to RPV is a Federal Aviation Administration (FAA)-designated flight training area. In mid-October, City staff submitted a draft letter to the Roundtable Chairman and the Los Angeles World Airports (LAWA) staff requesting the FAA to relocate the flight training area over the ocean further from the RPV shoreline. In response to that request, LAWA staff noted that the Roundtable focus is solely on noise originating from aircraft arriving and departing from Los Angeles International Airport (LAX). City staff reviewed the general aviation airports of origin and concluded that general aviation aircraft do not depart from LAX but departed from various municipal airports. As a result, City staff withdrew the draft letter as the subject matter is not within the purview of LAWA and the Roundtable. With respect to the jet aircraft that depart LAX, LAWA staff provided the Roundtable and City staff with statistical updates on passenger jet PV Peninsula overflights and altitude ranges. The attached charts reflect recorded data for September and October 2020. For more information from LAWA about their Roundtable meetings, including agendas and minutes, please visit their website by clicking [here](#). The next scheduled virtual Roundtable meeting will be on Wednesday, January 20, 2021, 1:30 PM – 4:00 PM.

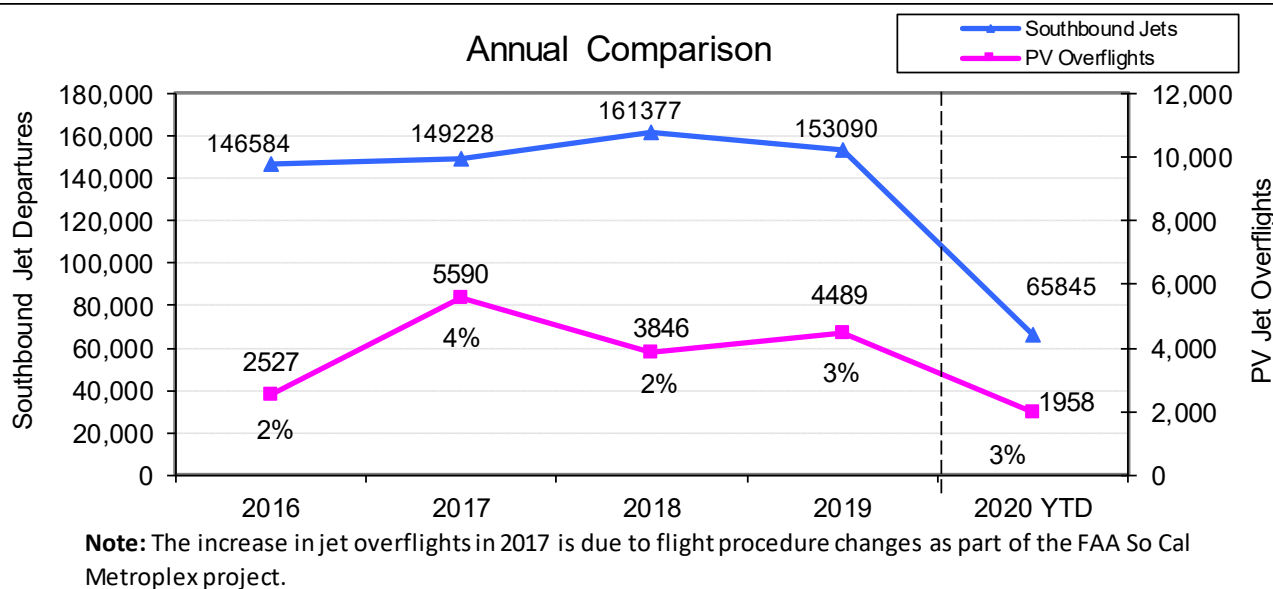
# Palos Verdes Peninsula – Jet Overflights

The graphs below show the total number of jets turning south upon departure from LAX and the number of those departures that fly over the Palos Verdes Peninsula.

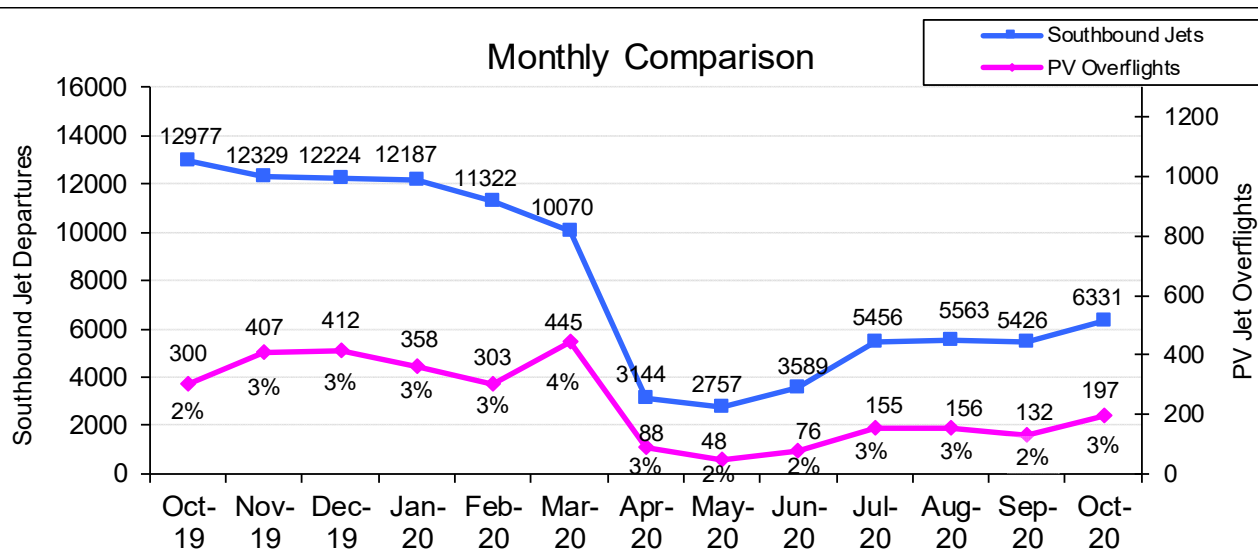
Sample Jet Departure Flight Track Over PV Peninsula



Annual Comparison



Monthly Comparison



## Jet Altitudes over PV Peninsula

