

# T1

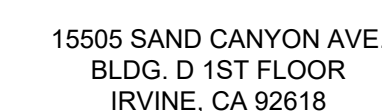




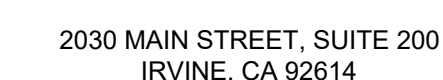








THE INFORMATION CONTAINED IN THIS SET OF  
DRAWINGS IS PROPRIETARY & CONFIDENTIAL TO  
VERIZON WIRELESS ANY USE OR DISCLOSURE OTHER  
THAN AS IT RELATES TO VERIZON WIRELESS IS  
STRICTLY PROHIBITED

**POLE# 4733792E**

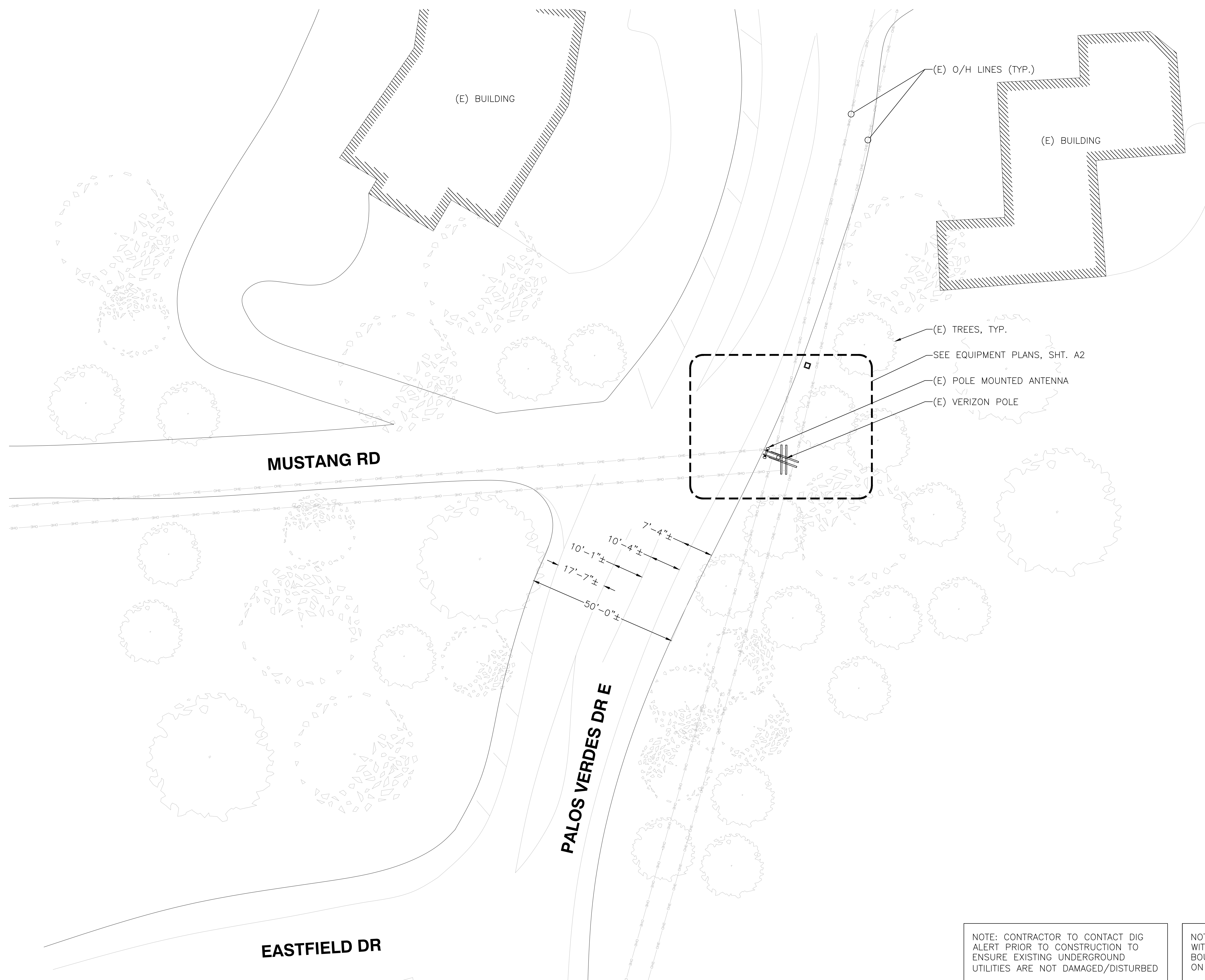
**SITE ADDRESS:**  
28880 1/2 PALOS VERDES DR EAST  
PALOS VERDES, CA 90275

A	10/15/2020	90% ZD
REV	DATE	DESCRIPTION

IT IS A VIOLATION OF LAW FOR ANY PERSON,  
UNLESS THEY ARE ACTING UNDER THE DIRECTION  
OF A LICENSED PROFESSIONAL ENGINEER,  
TO ALTER THIS DOCUMENT

## SITE PLAN

**A1**

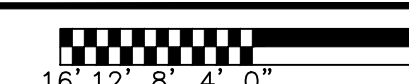


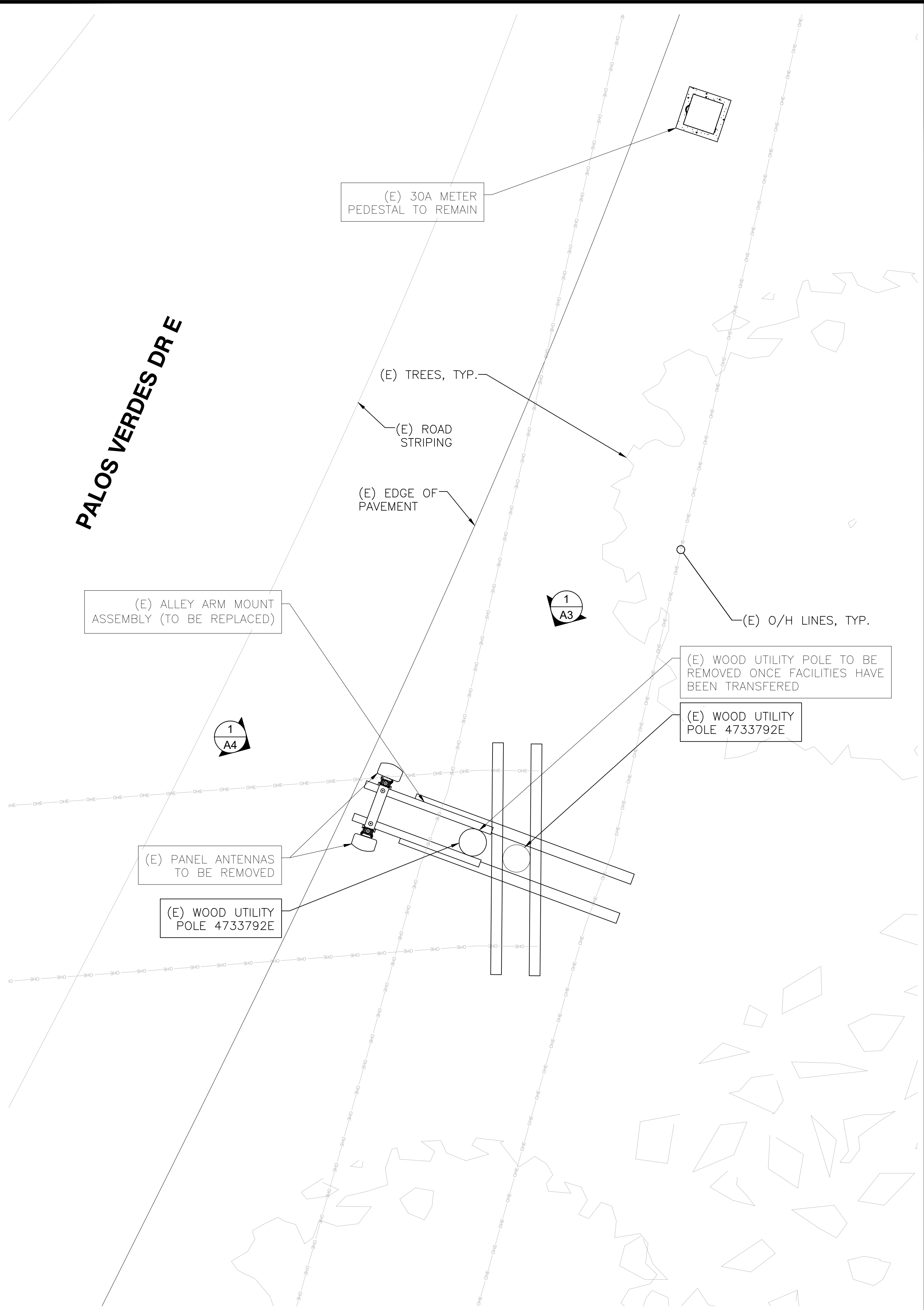
NOTE: CONTRACTOR TO CONTACT DIG  
ALERT PRIOR TO CONSTRUCTION TO  
ENSURE EXISTING UNDERGROUND  
UTILITIES ARE NOT DAMAGED/DISTURBED

NOTE: THIS SITE PLAN WAS GENERATED  
WITHOUT THE USE OF A SURVEY.  
BOUNDARIES AND DIMENSIONS SHOWN  
ON THESE PLANS ARE ESTIMATED

## SITE PLAN

24"x36" SCALE: 1/16" = 1'-0"  
11"x17" SCALE: 1/32" = 1'-0"



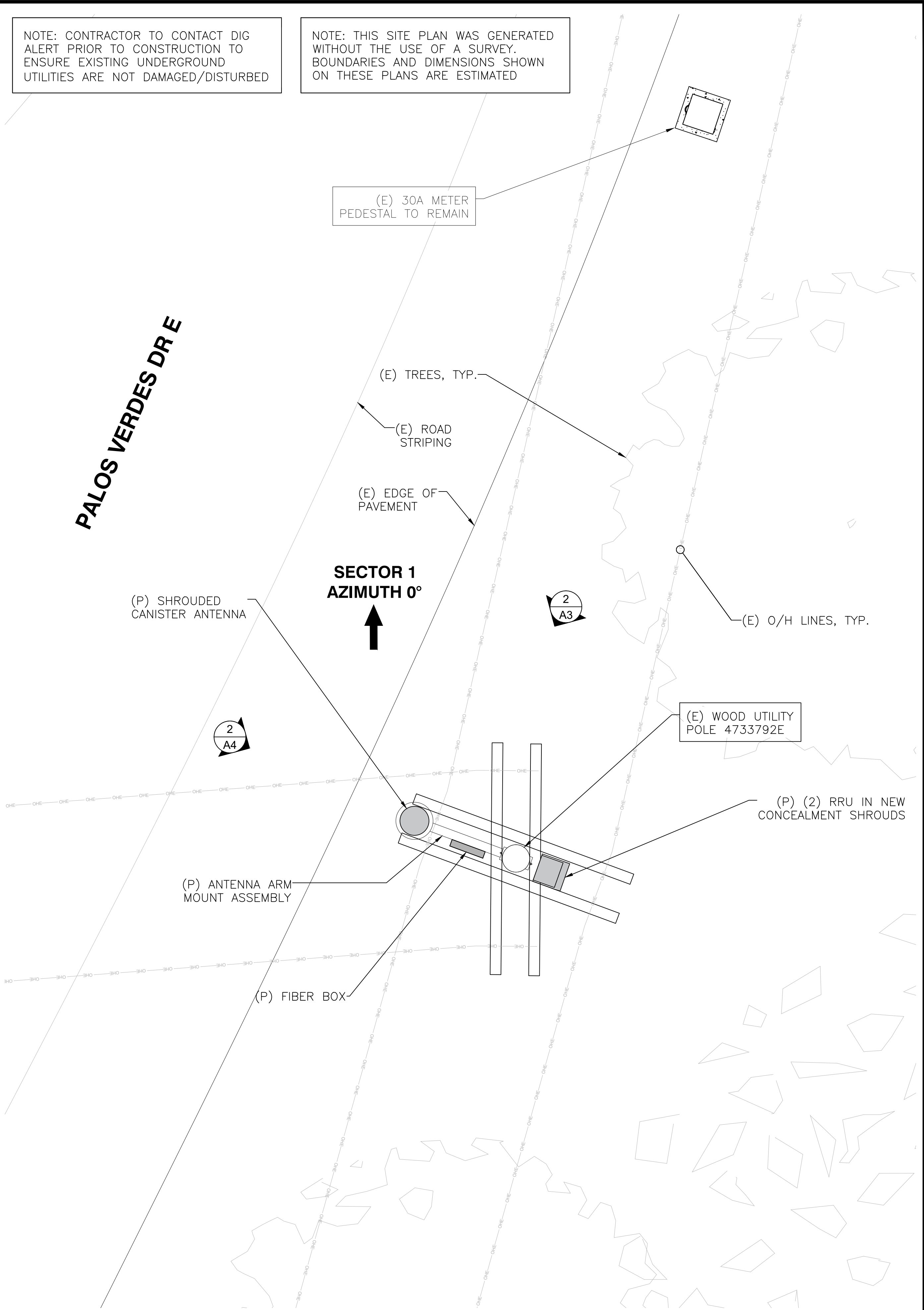


EXISTING EQUIPMENT PLAN

24"x36" SCALE: 3/8" = 1'-0"  
11"x17" SCALE: 3/16" = 1'-0"



1



PROPOSED EQUIPMENT PLAN

24"x36" SCALE: 3/8" = 1'-0"  
11"x17" SCALE: 3/16" = 1'-0"



2

**verizon**  
15505 SAND CANYON AVE.  
BLDG. D 1ST FLOOR  
IRVINE, CA 92618

THE INFORMATION CONTAINED IN THIS SET OF DRAWINGS IS PROPRIETARY & CONFIDENTIAL TO VERIZON WIRELESS ANY USE OR DISCLOSURE OTHER THAN AS IT RELATES TO VERIZON WIRELESS IS STRICTLY PROHIBITED

**INFRASTRUCTURE**  
PARTNERS

2030 MAIN STREET, SUITE 200  
IRVINE, CA 92614

**SITE NAME:**  
**SUNNYRIDGE MC**  
**A2**

**POLE# 4733792E**

**SITE ADDRESS:**  
28880 1/2 PALOS VERDES DR EAST  
PALOS VERDES, CA 90275

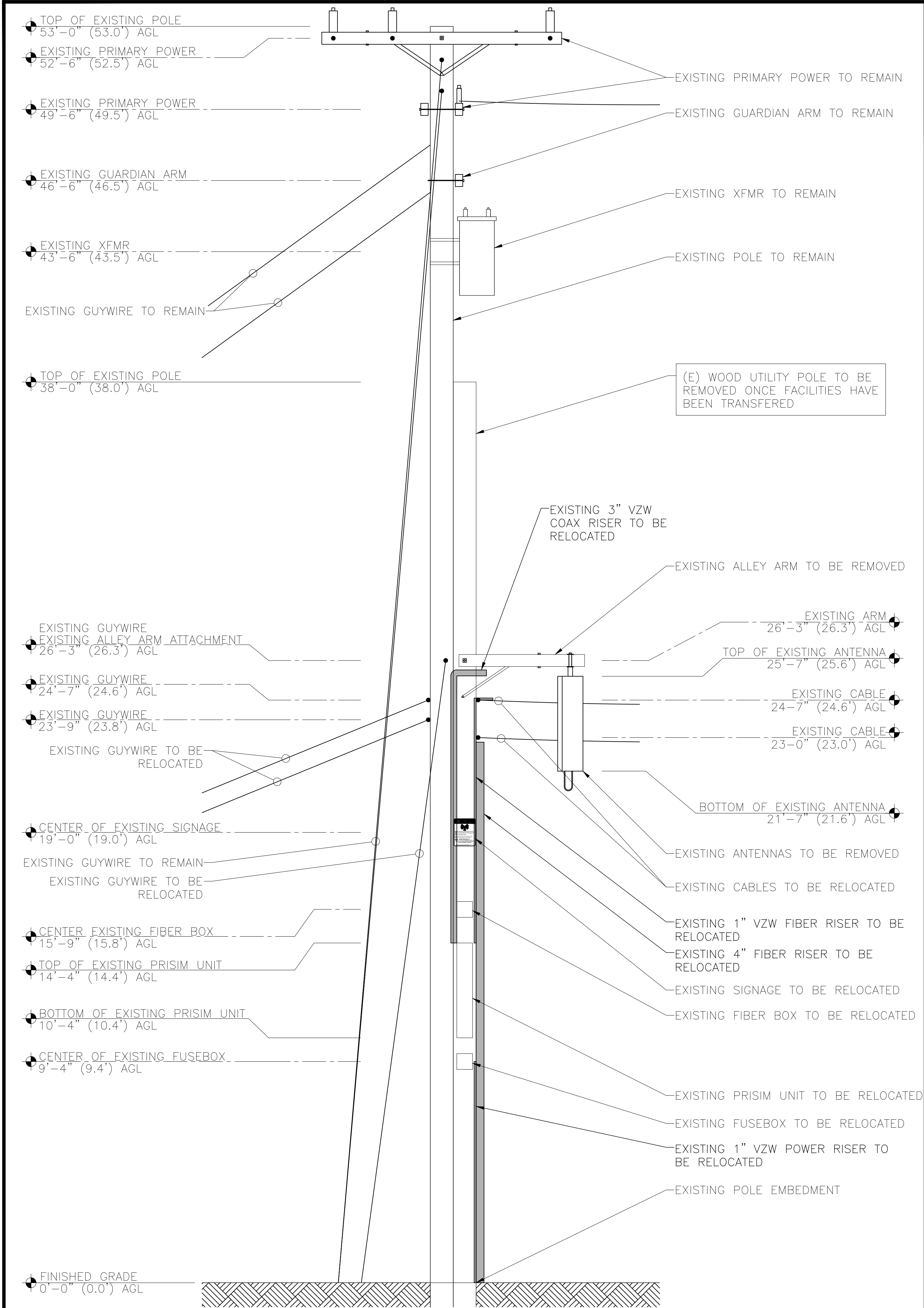
REV	DATE	DESCRIPTION	JO
A	10/15/2020	90% ZD	JO

IT IS A VIOLATION OF LAW FOR ANY PERSON, UNLESS THEY ARE ACTING UNDER THE DIRECTION OF A LICENSED PROFESSIONAL ENGINEER, TO ALTER THIS DOCUMENT.

**SHEET TITLE**  
**ENLARGED PLAN**

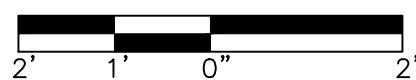
**SHEET NUMBER**  
**A2**



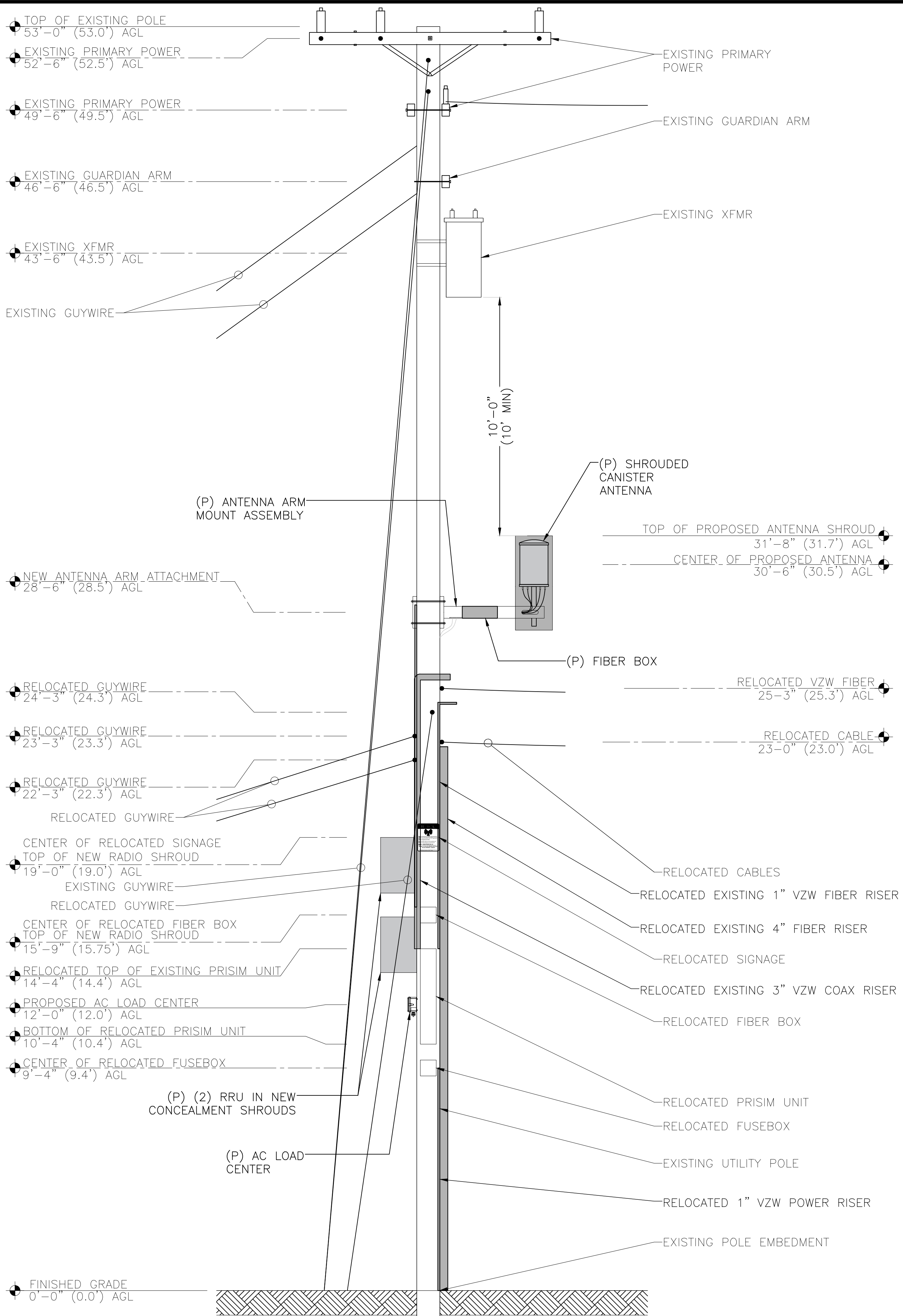


EXISTING NORTHEAST ELEVATION

24"x36" SCALE: 1/2" = 1'-0"  
11"x17" SCALE: 1/4" = 1'-0"

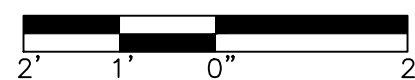


1



PROPOSED NE ELEVATION

24"x36" SCALE: 1/2" = 1'-0"  
11"x17" SCALE: 1/4" = 1'-0"



2



15505 SAND CANYON AVE.  
BLDG. D 1ST FLOOR  
IRVINE, CA 92618

THE INFORMATION CONTAINED IN THIS SET OF DRAWINGS IS PROPRIETARY & CONFIDENTIAL TO VERIZON WIRELESS ANY USE OR DISCLOSURE OTHER THAN AS IT RELATES TO VERIZON WIRELESS IS STRICTLY PROHIBITED



2030 MAIN STREET, SUITE 200  
IRVINE, CA 92614

**SITE NAME:**  
**SUNNYRIDGE MC**  
**A2**

**POLE# 4733792E**

**SITE ADDRESS:**  
28880 1/2 PALOS VERDES DR EAST  
PALOS VERDES, CA 90275

REV	DATE	DESCRIPTION	JO
A	10/15/2020	90% ZD	JO

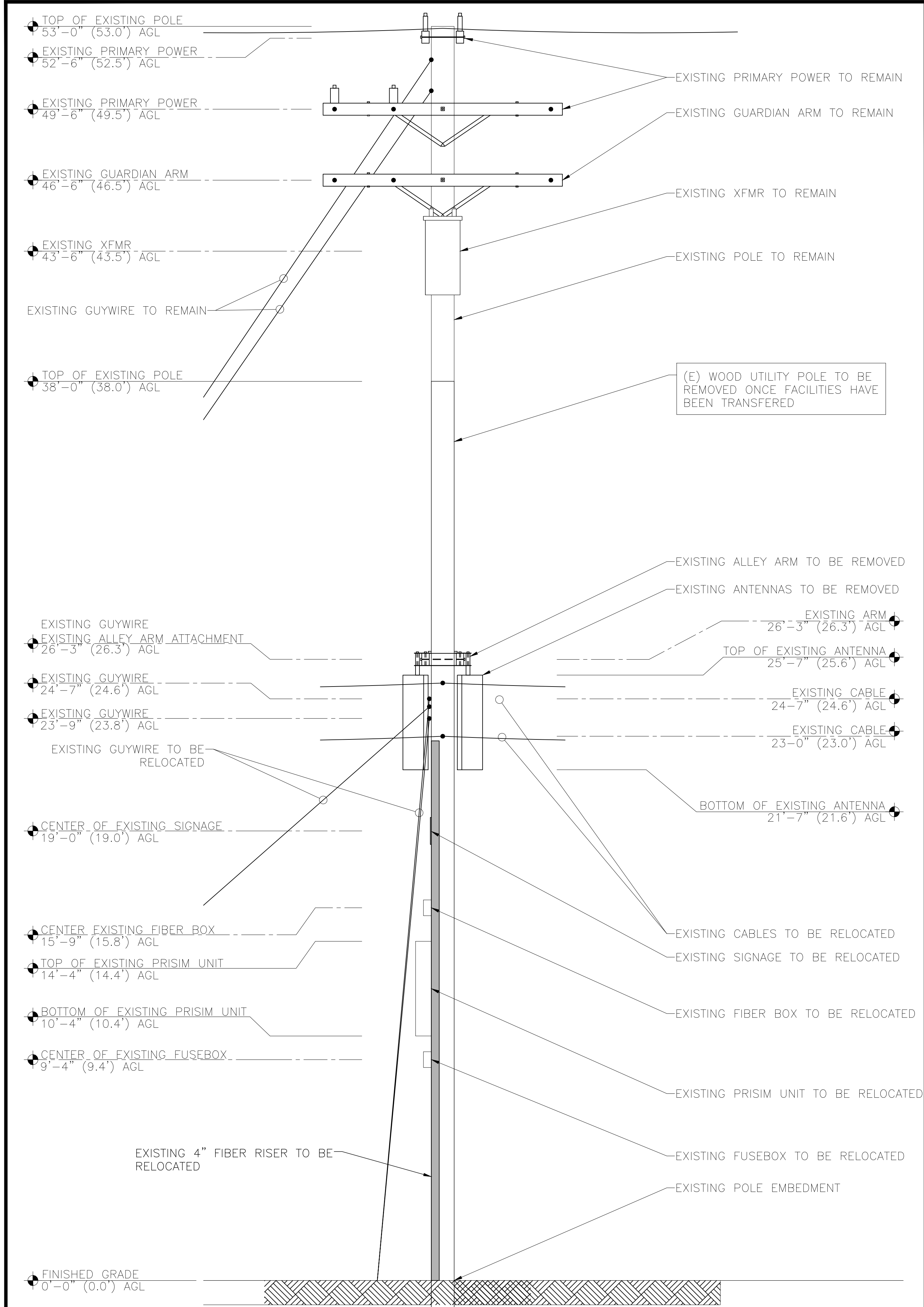
IT IS A VIOLATION OF LAW FOR ANY PERSON, UNLESS THEY ARE ACTING UNDER THE DIRECTION OF A LICENSED PROFESSIONAL ENGINEER, TO ALTER THIS DOCUMENT.

SHEET TITLE

**NORTHEAST  
ELEVATIONS**

SHEET NUMBER

**A3**

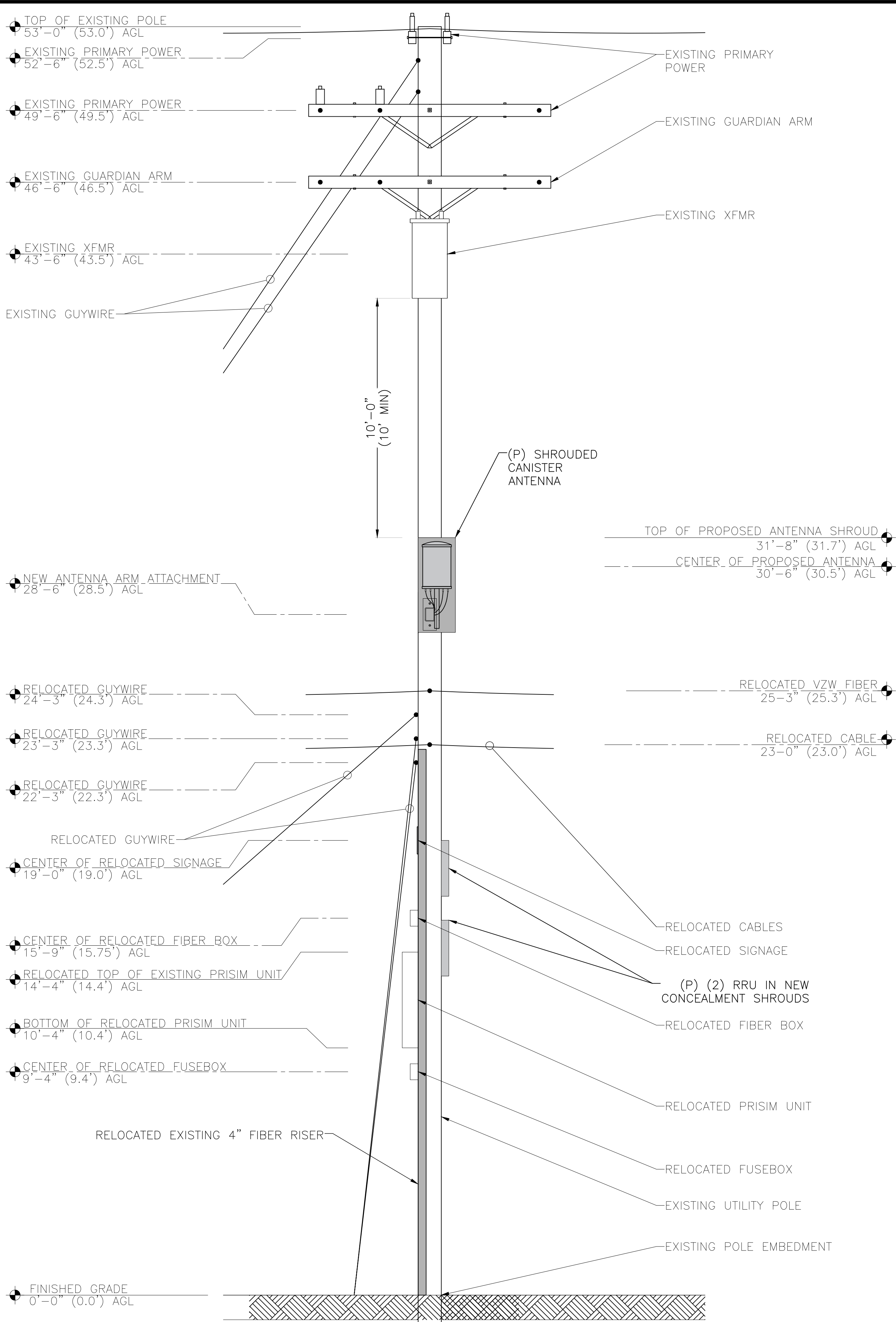


EXISTING NORTHWEST ELEVATION

24"x36" SCALE: 1/2" = 1'-0"  
11"x17" SCALE: 1/4" = 1'-0"

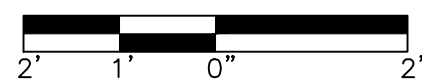


1



PROPOSED NORTHWEST ELEVATION

24"x36" SCALE: 1/2" = 1'-0"  
11"x17" SCALE: 1/4" = 1'-0"



2

**verizon**  
15505 SAND CANYON AVE.  
BLDG. D 1ST FLOOR  
IRVINE, CA 92618

THE INFORMATION CONTAINED IN THIS SET OF DRAWINGS IS PROPRIETARY & CONFIDENTIAL TO VERIZON WIRELESS ANY USE OR DISCLOSURE OTHER THAN AS IT RELATES TO VERIZON WIRELESS IS STRICTLY PROHIBITED

**INFRASTRUCTURE**  
PARTNERS

2030 MAIN STREET, SUITE 200  
IRVINE, CA 92614

**SITE NAME:**  
**SUNNYRIDGE MC**  
**A2**

**POLE# 4733792E**

**SITE ADDRESS:**  
28880 1/2 PALOS VERDES DR EAST  
PALOS VERDES, CA 90275

REV	DATE	DESCRIPTION	JO
A	10/15/2020	90% ZD	JO

IT IS A VIOLATION OF LAW FOR ANY PERSON, UNLESS THEY ARE ACTING UNDER THE DIRECTION OF A LICENSED PROFESSIONAL ENGINEER, TO ALTER THIS DOCUMENT.

SHEET TITLE

**NORTHWEST  
ELEVATIONS**

SHEET NUMBER

**A4**