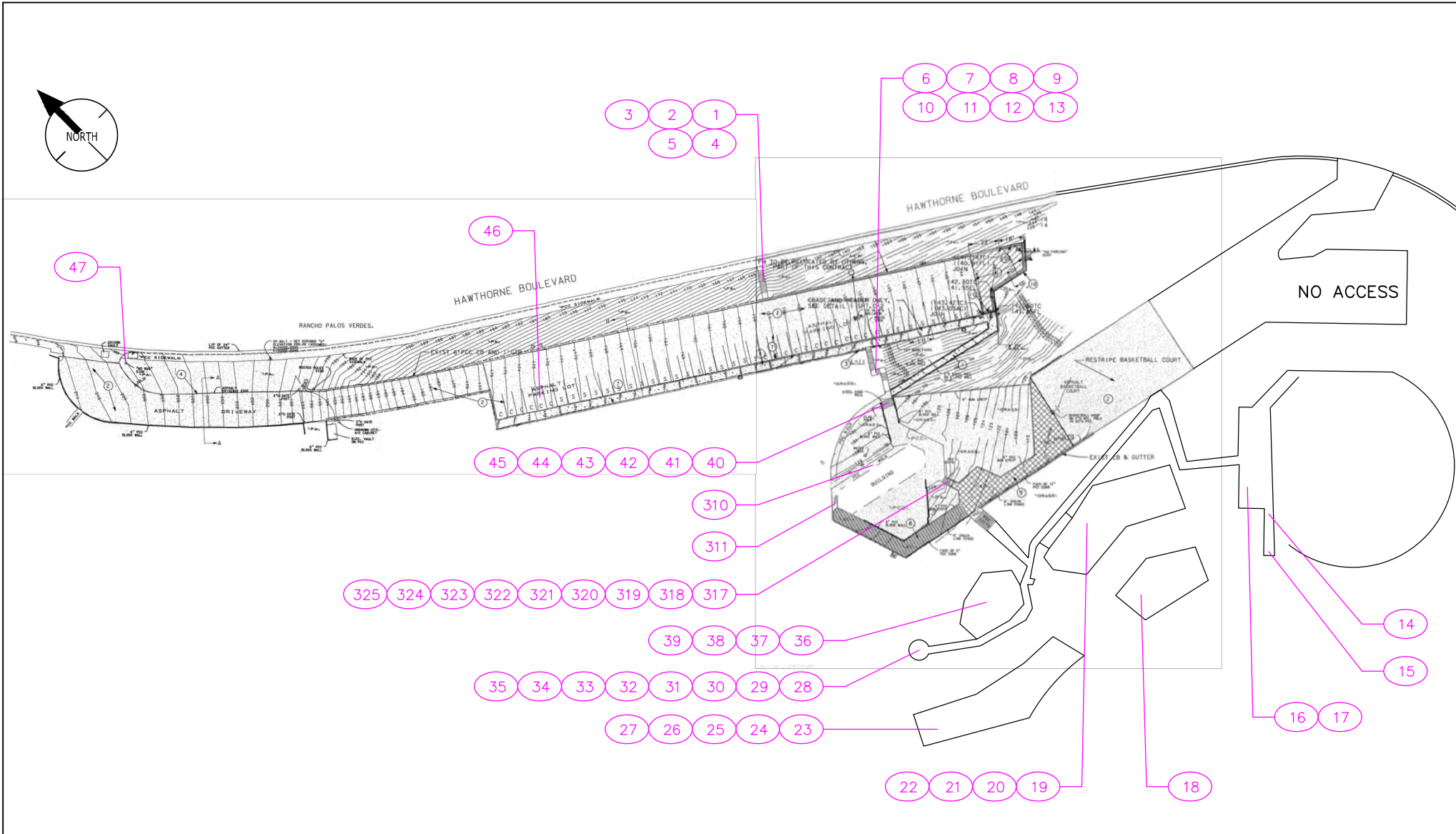


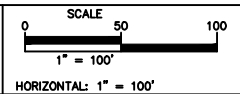
FACILITY ID #12 - ROBERT E. RYAN PARK
 30359 Hawthorne Boulevard, Rancho Palos Verdes, CA 90275




CITY OF RANCHO PALOS VERDES	
DIRECTOR OF PUBLIC WORKS	DATE

NO.	DATE	DESCRIPTION	APPROVED
REVISIONS			

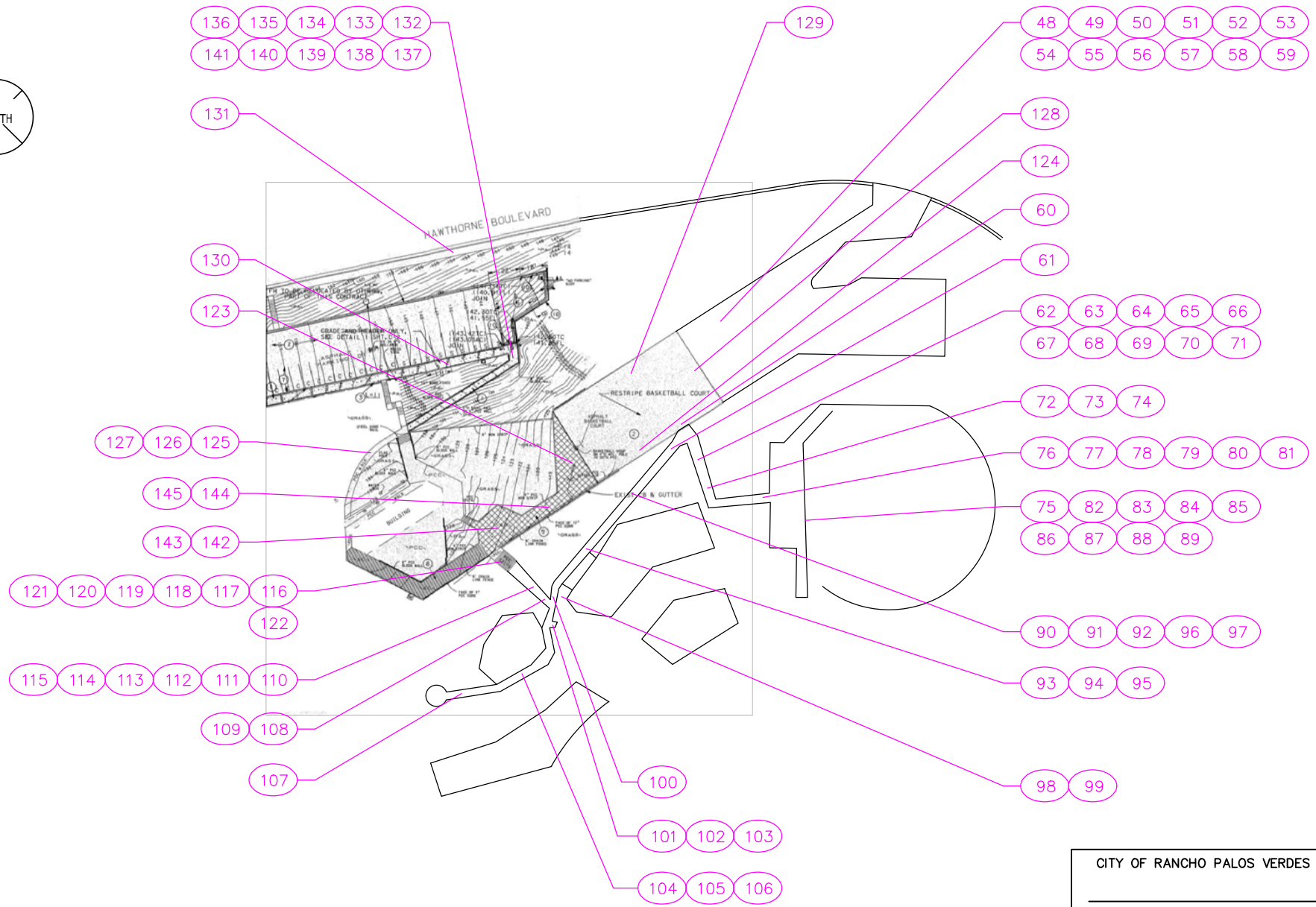
DESIGNED —
 DRAWN — EK
 CHECKED — ES
 DATE 9/27/2010



CITY OF RANCHO PALOS VERDES



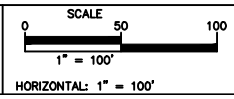
FACILITY ID #12 - ROBERT E. RYAN PARK
 30359 Hawthorne Boulevard, Rancho Palos Verdes, CA 90275



CITY OF RANCHO PALOS VERDES	
DIRECTOR OF PUBLIC WORKS	DATE

NO.	DATE	DESCRIPTION	APPROVED
REVISIONS			

DESIGNED —
 DRAWN EK
 CHECKED ES
 DATE 9/27/2010

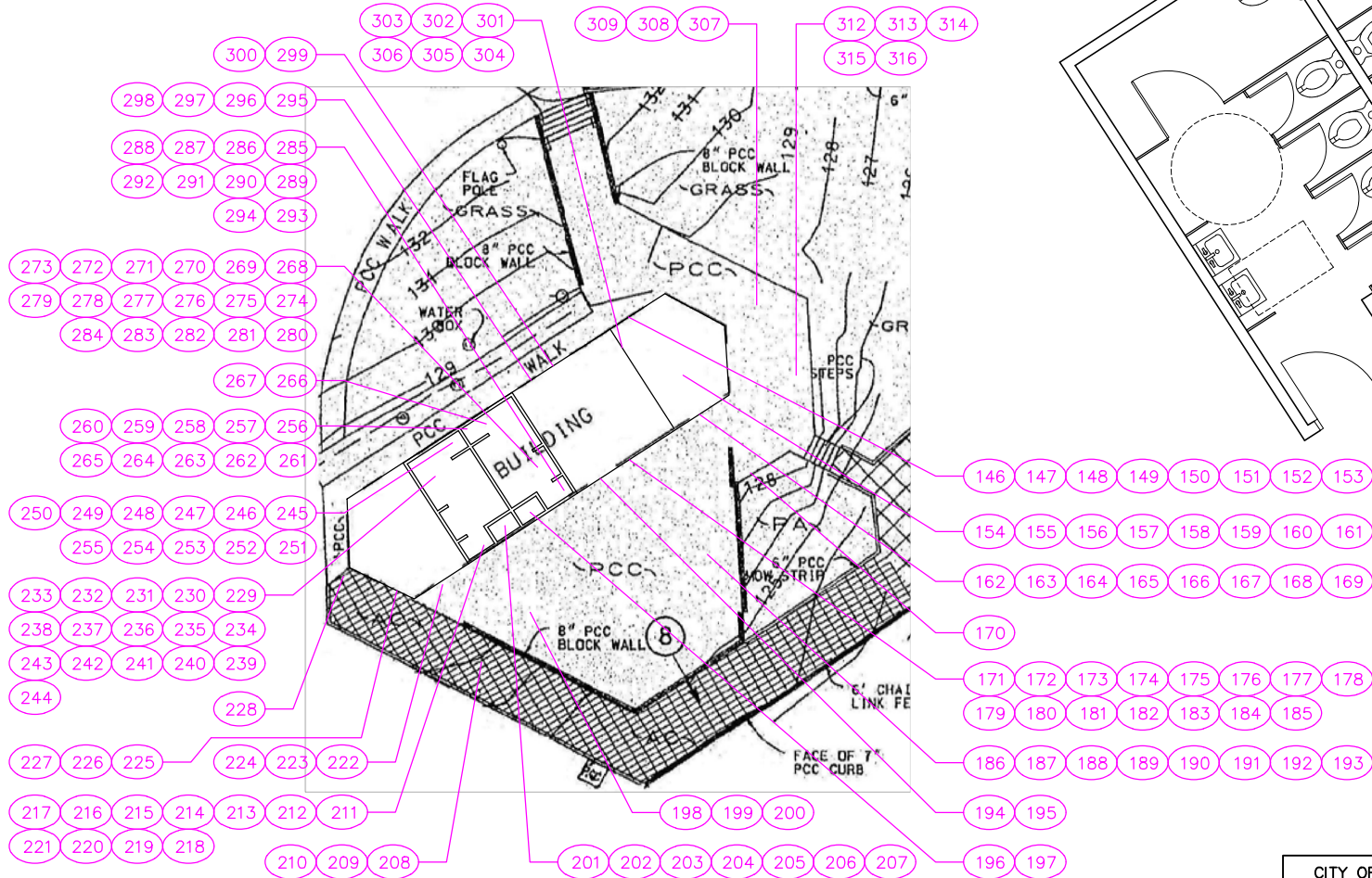
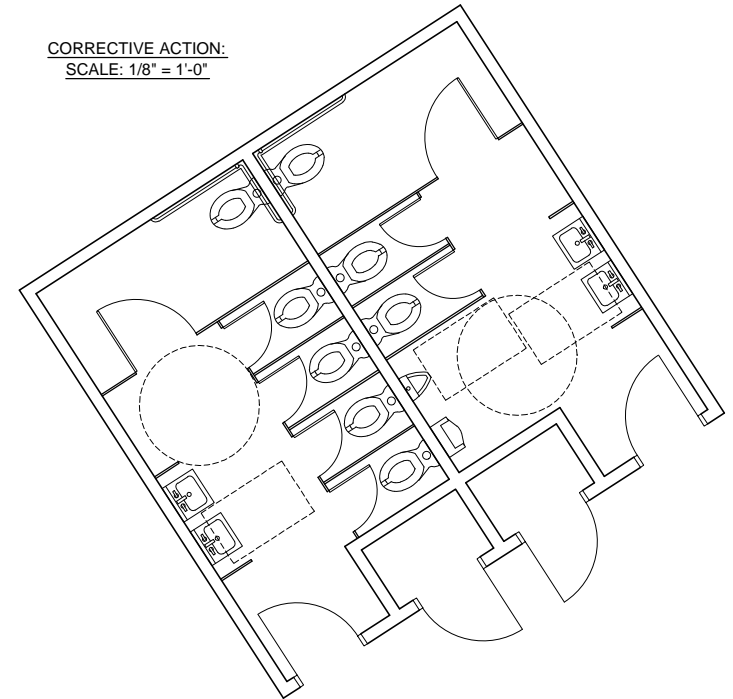


CITY OF RANCHO PALOS VERDES

FACILITY ID #12 - ROBERT E. RYAN PARK
 30359 Hawthorne Boulevard, Rancho Palos Verdes, CA 90275



CORRECTIVE ACTION:
SCALE: 1/8" = 1'-0"




CITY OF RANCHO PALOS VERDES	
DIRECTOR OF PUBLIC WORKS	DATE

NO.	DATE	DESCRIPTION	APPROVED
REVISIONS			

DESIGNED: —
 DRAWN: EK
 CHECKED: ES
 DATE: 9/27/2010

SCALE
 0 15 30
 1" = 30'
 HORIZONTAL: 1" = 30'

CITY OF RANCHO PALOS VERDES



CITY OF RANCHO PALOS VERDES
 ACCESSIBILITY SELF-EVALUATION AND TRANSITION PLAN

SHEET 3 OF 3
 SHT. 3
 PROJECT NO. 012811