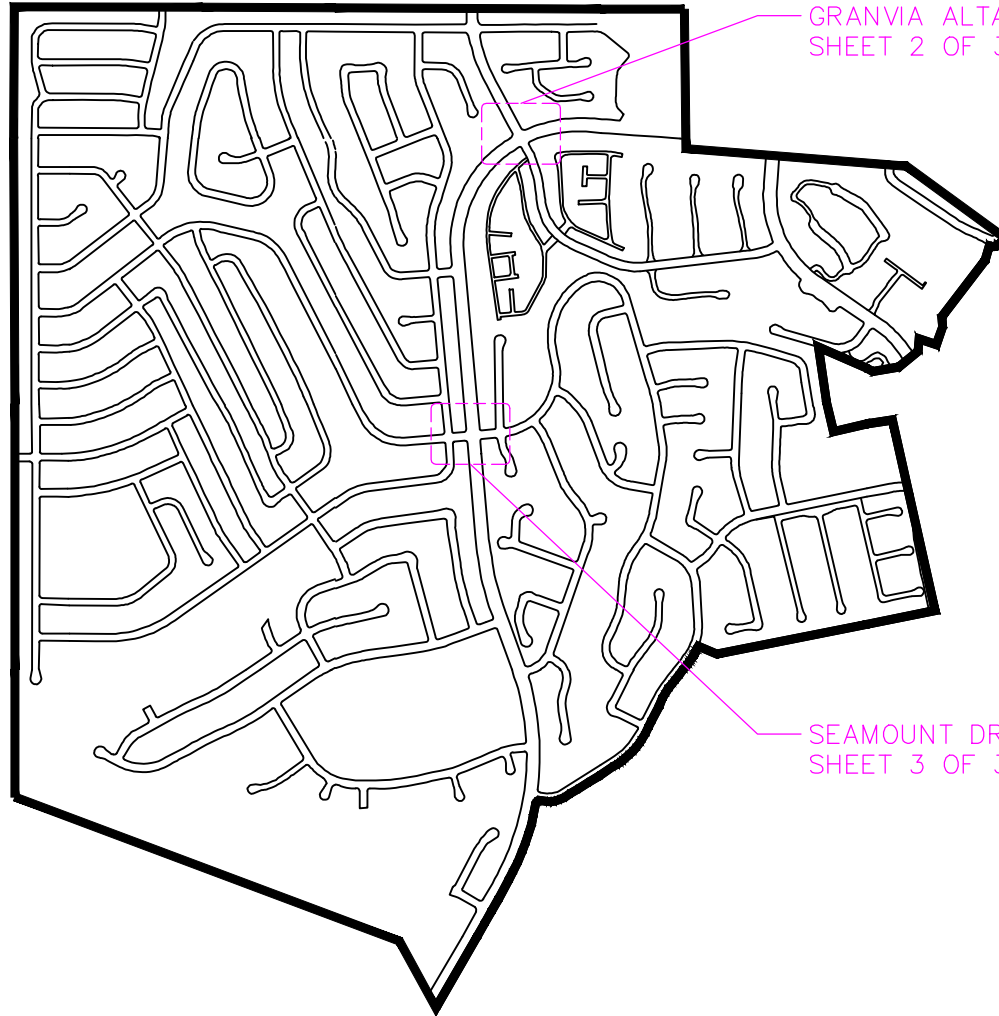


FACILITY ID #N/A - AREA 2 MAP
(PEDESTRIAN SIGNALS)



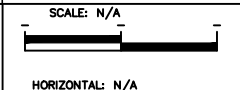
SURVEY AREA



CITY OF RANCHO PALOS VERDES	
DIRECTOR OF PUBLIC WORKS	DATE

NO.	DATE	DESCRIPTION	APPROVED
REVISIONS			

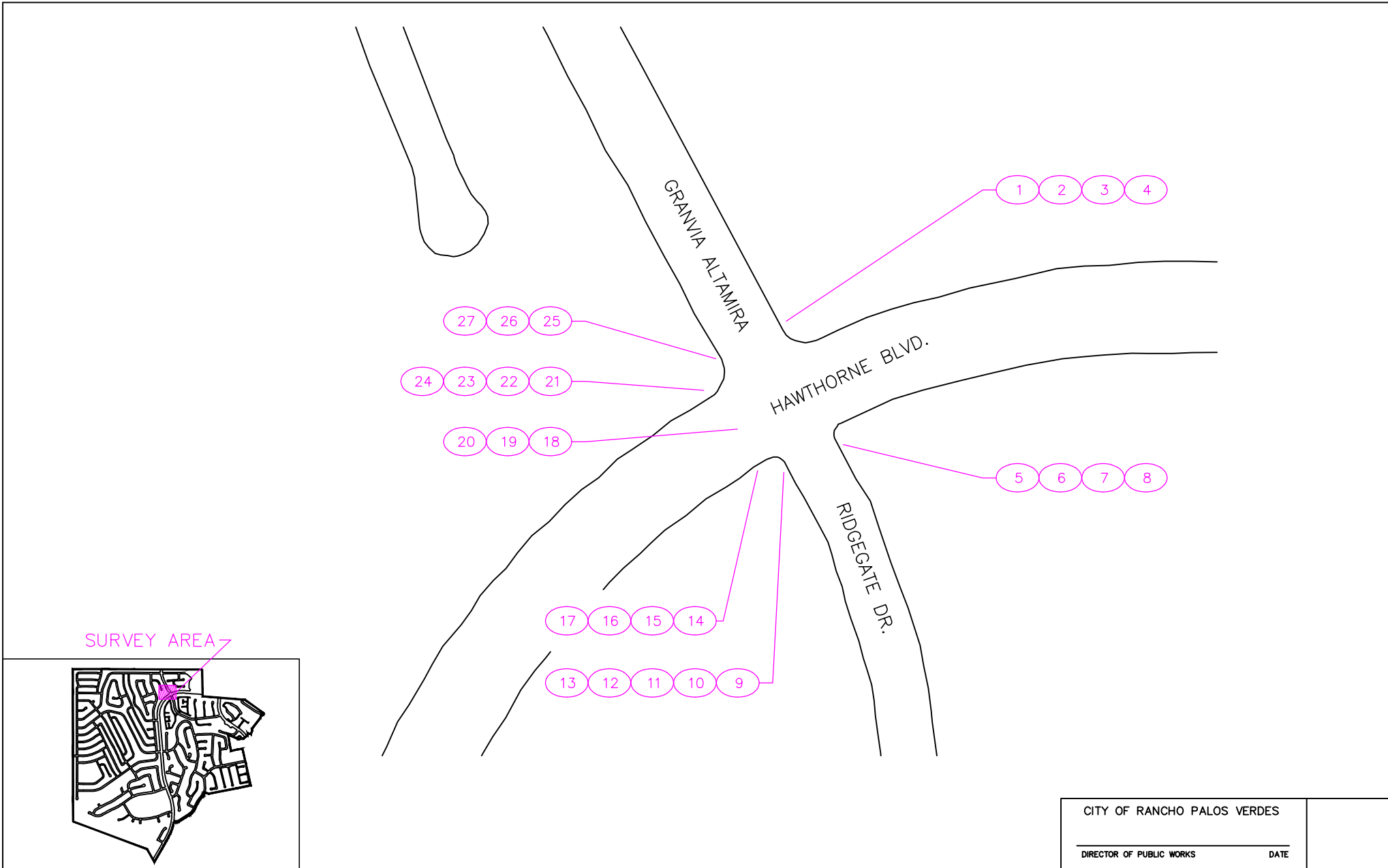
DESIGNED	—
DRAWN	ES
CHECKED	—
DATE	11/23/2020



CITY OF RANCHO PALOS VERDES

CITY OF RANCHO PALOS VERDES
ACCESSIBILITY SELF-EVALUATION AND TRANSITION PLAN

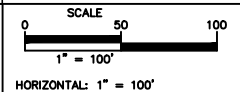
FACILITY ID #N/A - GRANVIA ALTAMIRA & HAWTHORNE BLVD.
(PEDESTRIAN SIGNALS - AREA 2)



CITY OF RANCHO PALOS VERDES	
_____ DIRECTOR OF PUBLIC WORKS	_____ DATE

NO.	DATE	DESCRIPTION	APPROVED
REVISIONS			

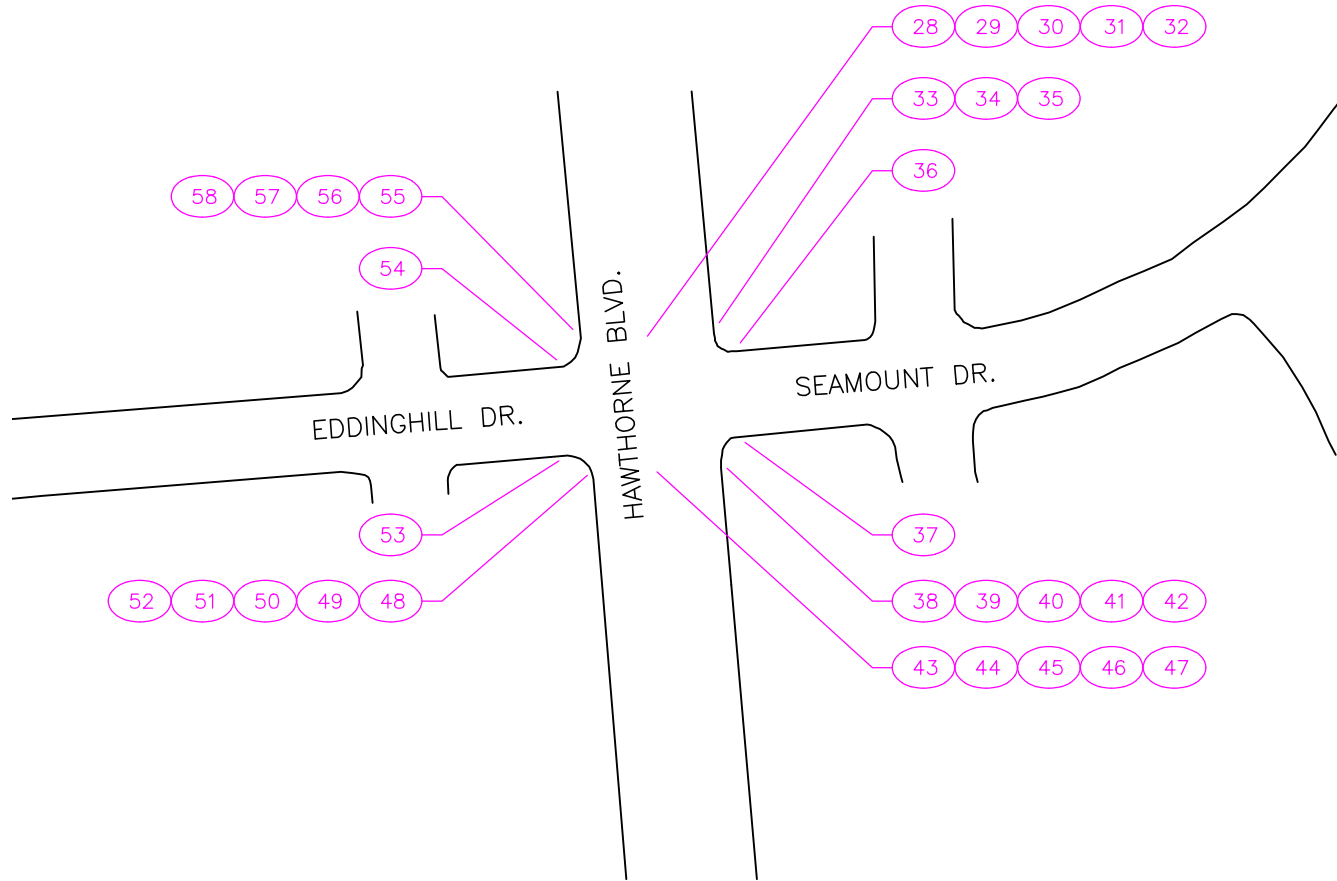
DESIGNED —
 DRAWN ES
 CHECKED —
 DATE 11/23/2020



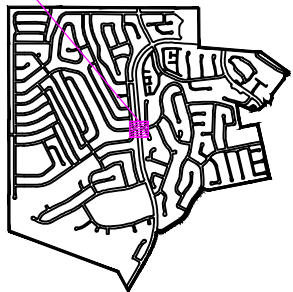
CITY OF RANCHO PALOS VERDES

CITY OF RANCHO PALOS VERDES
 ACCESSIBILITY SELF-EVALUATION AND TRANSITION PLAN

FACILITY ID #N/A - SEAMOUNT DR. & HAWTHORNE BLVD.
(PEDESTRIAN SIGNALS - AREA 2)



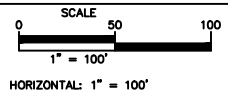
← SURVEY AREA




CITY OF RANCHO PALOS VERDES	
_____ DIRECTOR OF PUBLIC WORKS	_____ DATE

NO.	DATE	DESCRIPTION	APPROVED
REVISIONS			

DESIGNED	—
DRAWN	ES
CHECKED	—
DATE	11/23/2020



CITY OF RANCHO PALOS VERDES



CITY OF RANCHO PALOS VERDES
 ACCESSIBILITY SELF-EVALUATION AND TRANSITION PLAN