

## **MEMORANDUM**

**Date:** October 13, 2021

**To:** Katie Lozano, Senior Analyst, Recreation and Parks Department

Norma Saldaña, Recreation Supervisor, Recreation and Parks Department

**From:** Senior Park Ranger Fox

**SUBJECT:** 3<sup>rd</sup> Quarter Rancho Palos Verdes Ranger Enforcement Report

---

### **PRESERVE VISITOR CONTACTS SUMMARY**

- July 1 – September 30, 2021
- 4 Full Time Park Rangers patrolled the Preserve during this period
- 3 Part Time Parking Enforcement Rangers patrolled access points, educated patrons, and enforced Park Mobile Implementation on Crenshaw Boulevard, effective (August 2, 2021)

This reporting period continued to be atypical as operations continued to be influenced by the Covid-19 Pandemic and public health mandates from the State and LA County. Masks were still required for indoor activities, and where social distancing cannot be observed, regardless of vaccination status. Trail Counter data and ranger observations show an increase in public use of open spaces compared to the previous quarter, and from the previous year with the highest activity recorded in the month of September.

Park Rangers also assisted the public in the implementation of the ParkMobile Parking Reservation System on Crenshaw Boulevard and Park Place. The program began on July 6, 2021, with a one-month free reservation period to educate the public on the new parking reservation system. As of August 2, the parking reservation system included the installation of sensors on the ground, and 3 new Parking Enforcement Park Rangers who served as Ambassadors.

### **Operations under COVID-19 LA County Health Department Regulations**

In accordance with the L.A. County Health Officer Order, group restrictions were no longer in place for outdoor areas. The group size capped at 20, for groups within the Palos Verdes Nature Preserve, and varied by park. Individuals were still required to wear masks indoors, regardless of vaccination status. Masks were no longer required in outdoor spaces for vaccinated individuals at the end of Quarter 2, with no changes in this quarter.

## **Trainings and Coordination:**

### *Coastal Issues: Smuggling and Poaching in RPV's Coast (August 17 and 19):*

Recreation Supervisor Saldaña and Recreation Specialist Sichan hosted an internal training for all Open Space Management staff to discuss how to identify common issues while patrolling RPV's coast, which agencies to coordinate with, and how to report the issues accordingly.



### *Recreating Safely During Fire Season (August 25):*

Hosted by Community Nature Connection and Southern California Leave No Trace Advocate Michael Garcia, this online training provided a plan on how to prepare, mitigate risk and safely enjoy the outdoors during fire season.

### *Rattlesnake Safety and Handling Workshop (September 1):*

Open Space Management and the Palos Verdes Peninsula Land Conservancy (PVPLC) Stewardship Team attended a training hosted by Dr. Emily Taylor to learn about snake identification, rattlesnake behavior, safety, and handling.



### *Marine Protected Areas: Waterkeeper Ride-Along (September 29 and 30):*



Open Space Management Staff participated in a boat ride-along on September 29 and 30 with Los Angeles Waterkeeper, to identify MPA violations and observations along the RPV coast by boat! All boat participants are trained to complete surveys, and record data to assist agencies in monitoring the safety and welfare of MPAs.

### **Project Coordination & Emergency Work:**

OSM staff help to coordinate multiple projects within the Preserve to ensure Natural Communities Conservation Plan / Habitat Conservation Plan (NCCP / HCP) compliance with PVPLC, to implement trail closures and public safety measures, and to provide public notification. Below are a list of projects OSM staff helped coordinate with PVPLC, the Public Works Department, and public utilities in the third quarter:

- California Water Company at Lower Rim Trail: Routine Maintenance  
(August 2021 at Portuguese Bend Reserve)
- California Water Company at Burma Road Trail: Emergency Maintenance  
Fire Hydrant Damaged due to Vehicle Collision  
(August 2021 at Portuguese Bend Reserve)
- Crown Castle at Wanderer Trail: Downed Power Lines  
(August 2021 at San Ramon Reserve)
- Crown Castle at Klondike Canyon  
(Site Visit: September 2021, work TBD)
- Southern California Edison at Barkentine Trail: Routine Maintenance  
(Coordination in September, completed in October 2021 at Three Sisters Reserve)
- Southern California Edison at Coast Guard Property: Routine Maintenance  
(Fall 2021 at Alta Vicente Reserve)
- Land Movement, and other Hazards: Emergency Maintenance  
(Continuous at Ocean Trails, Portuguese Bend, and Abalone Cove Reserves)
- Trump National Staff at Southshore Coastal Trail: Maintenance  
(Fall 2021 at Ocean Trails Reserve)
- Trump National Staff at Purple Sage Trail: Maintenance  
(Fall 2021 at Ocean Trails Reserve)

### **OVERALL VISITOR CONTACTS:**

#### **Total Contacts: 8,203**

Hikers: 6,920

Dog Walkers: 617

Cyclists: 642

Equestrians: 24

Warnings: 164

#### **Calls for Assistance: 17 transports**

Heat exhaustion & heat stress: 11

Dog exhaustion & heat stress: 5

Basic First Aid Care (Minor cuts and rashes): 0

Other (i.e. underlying condition, sprained ankle): 1

**Preserve Information and Reporting Hotline Calls: 34 calls**

*\*No. of violations higher than the number of calls. Some calls reported multiple violations observed at once.*

*\*\*Interrupted Service for a 2-week period at the end of August. Some calls may not have been transmitted to all reporting parties.*

Trail Status and General Information: 7

Camping: 3

Use of Spur Trail / Closed Areas: 1

Parking Issues: 7

Vandalism: 6

Fishing / Poaching: 1

Drone: 1

Maintenance: 2

Removal of flora/fauna: 4

Smoking: 1

Medical Assistance / First Aid: 1

**ENFORCEMENT SUMMARY:****Notice of Parking Citations Issued: 464 Total****By Violation:**

Passenger Loading Zone - 1

Park by Permit – 380

Parking Lot / Preserve / Park Hours- 24

Posted Temporary No Parking / Fire Lane – 40

Handicap Zone – 19

Other- 41

**By Location:**

Crenshaw Boulevard (Portuguese Bend / Filiorum adjacent) – 323

Del Cerro Park – 115

Abalone Cove Reserve – 51

Other – 5

Forrestal Reserve – 5

Vicente Bluffs Reserve - 5

**Notice to Appear Citations Issued: 12 Total**

Number of violations is greater than the number of citations issued

**By Violation:**

Closed Area – 8

Dogs off Leash – 4

By Location:

Abalone Cove Reserve – 5

Alta Vicente Reserve - 1

Vicente Bluffs Reserve – 3

Forrestal Reserve – 1

Portuguese Bend Reserve – 1

Ocean Trails Reserve – 1

**ACTIVITY REPORT BY RESERVE:**

The next section provides further information on projects, reports, and observations received by Rangers from the public, organized per Reserve. Numbers do not reflect actual number of individuals in the Reserve, rather those spoken to while on foot and/or vehicle patrols. Information does also not include routine maintenance.

**Abalone Cove Reserve:**

	Public Contact	Education	Warning	Enforcement
Hikers	1,315	220	71	4
Dogs	37	7	8	0
Biker	27	2	2	0
Equestrian	2	2	2	0

On July 15, Park Rangers were notified of a panga boat landing at Sacred Cove. Park Rangers assisted Los Angeles County Sheriff Departments, Coast Guard, and Border Patrol in locating all individuals, resulting in 14 detained.





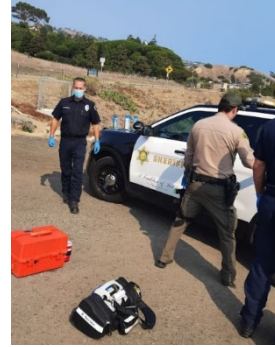
On July 23, Park Rangers made contact with a male who had set up a tent within the beach at Sacred Cove. It is unknown whether the individual had camped overnight. A bonfire had also been removed by Rangers.



On July 27, Rangers observed and removed an uninhabited tent on Sacred Cove Beach. The tent had been reported days prior, and not been claimed. No identifiable information was found, and the tent was discarded.



On August 19, OSM staff observed an individual who had been honking his car horn repeatedly while parked in the Abalone Cove parking lot. The individual had been drifting in and out of consciousness after inhaling several canisters of compressed air. Los Angeles County Sheriff Department arrived to assist. Initially, the individual attempted to flee, but was restrained by Deputies. The vehicle was towed out of the parking lot and the individual was taken to a hospital for medical assessment.



Throughout this reporting period, several patrons reported vehicle break-ins at Abalone Cove Parking Lot. OSM staff worked with Los Angeles County Sheriff Department to report such incidents. By September 14, Los Angeles County Sheriff Department confirmed the individual had been caught. Staff continue to remain vigilant and report any and all suspicious activity to Los Angeles County Sheriff Department.

On weekends, holidays, and during low-tide events, staff continued to patrol in the City's two State Marine Conservation Areas, primarily, at Abalone Cove SMCA. Staff continued to educate patrons about Marine Protected Areas (MPA), and shared proper tide pool etiquette for safely viewing but not disturbing marine organisms. During this reporting period, a total of 40 violations were observed, and 17 individuals were contacted and educated by staff, resulting in the return of 2 marine organisms, and an additional 11 violations prevented by providing information and alternative locations where individuals can legally take outside of the MPA zone with a fishing license.

During this reporting activity, there was a sharp decrease in poaching activity, likely due to a lack of low tides during the daytime. However, violations are occurring despite lower activity because of handling or removing wildlife from the tidepools and with boats fishing or taking from our MPAs. Staff continue to see high compliance rates when contacting those engaged in MPA violations, with most people contacted simply being unaware of the MPAs or the laws surrounding them. For the future, OSM will continue to patrol our MPAs and coordinate with several partners for training and education purposes.

### **Agua Amarga Reserve**

	Public Contact	Education	Warning	Enforcement
Hikers	3	1	0	0
Dog	1	0	0	0
Biker	0	0	0	0
Equestrian	0	0	0	0

### **Alta Vicente Reserve**

	Public Contact	Education	Warning	Enforcement
Hikers	26	2	0	0
Dog	7	0	0	1
Biker	0	0	0	0
Equestrian	0	0	0	0

On September 7, Rangers received a report of a woman who has repeatedly had her dog off leash. The woman was verbally aggressive towards other hikers when asked to leash her dog and has spat at the same group during a later encounter. The incident was reported to City Council and the Sheriff Department. Rangers increased patrols in this area to make contact with the individual, however, the woman has not been sighted.

### **Filiorum Reserve**

	Public Contact	Education	Warning	Enforcement
Hikers	100	7	0	0
Dog	7	0	0	0
Biker	5	0	3	0
Equestrian	0	0	0	0

On August 6, Rangers observed a large group gathering, setting up tables, and distributing food adjacent to an access point to Filiorum Reserve. In compliance with the City's Municipal Code, no special events are permitted, which includes setting up of tables. The individuals were part of a church group of approximately 80 individuals. The group was also in violation of group size, at 20 individuals. The group complied and picked up all belongings.





## **Forrestal Reserve**

	Public Contact	Education	Warning	Enforcement
Hikers	404	50	5	0
Dog	71	15	4	1
Biker	50	4	2	0
Equestrian	0	0	0	0

Rangers received reports of unauthorized use at Ladera Linda upper fields, property of Palos Verdes Peninsula Unified School District. City staff continued to coordinate efforts to deter unauthorized activity, including use of spur trails leading up to the fields from the upper parking lot. Park Rangers educated patrons in violation of posted rules and regulations, including dogs off leash, and unauthorized use at the Ladera Linda upper fields. Rangers also assisted and coordinated with Recreation and Parks staff to secure the Forrestal Drive gate to ensure access is limited to authorized vehicles.

Throughout the month of September, the City has received increased reports of violations including dogs off leash, failure to pick up dog feces, and bicyclists on non-bike trails within the Forrestal Reserve and adjacent area. Rangers have increased patrols to address these violations, educate the public, and enforce as necessary. During these patrols, Rangers observed little to no violations inside the Reserve, and have received compliments from patrons for their increased presence.

During the month of August, several signs were installed to educate patrons regarding the City's Municipal Code to prohibit e-bikes on Preserve Trails. The signs had been previously installed in May 2021, but several had been vandalized and removed from their original location.



On August 30, Rangers received multiple reports of 2 Portable Restrooms tipped over. The 2 Portable Restrooms are located at the end of Main Sail Drive, adjacent to the Upper Ladera Linda Field. Rangers confirmed no individuals were inside, removed graffiti, and conducted litter abatement. The rightful owner, the Palos Verdes Unified School District was notified of the report.



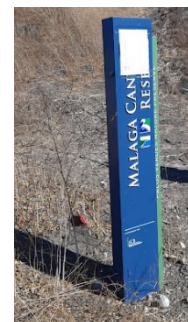
On September 28, Ladera Linda staff received a report of 2 individuals riding dirt bikes in the Preserve. The individuals were seen accessing Purple Sage and driving around Burma Road / Ishibashi Trail, “tearing up the trails” and driving around fast. Rangers set up patrols to make contact with the individuals, but have not received additional reports since then.

### **Malaga Reserve**

	Public Contact	Education	Warning	Enforcement
Hikers	0	0	0	0
Dog	0	0	0	0
Biker	0	0	0	0
Equestrian	0	0	0	0

On July 28, OSM received reports of trash and an encampment along the canyon. OSM staff hiked the area, conducted litter abatement, removed one unauthorized sign on the Monument and confirmed no encampments in the area.

OSM received 2 additional reports during this period of individuals observing a homeless individual with shopping cart entering the trails with concerns of encampment. Rangers patrolled the area but did not observe any encampments or individuals in the area.



## **Ocean Trails Reserve**

	Public Contact	Education	Warning	Enforcement
Hikers	697	113	10	0
Dog	80	3	11	2
Biker	11	0	0	0
Equestrian	0	0	0	0

On July 2, Rangers received a report from Recreation and Parks Staff of an active landslide taking place near Coastal Switchback Trail. The landslide resulted in falling rock onto the trail, and dislodged several wooden posts that ran parallel to the trail. The City Geologist was notified, and Park Rangers notified Trump National Staff for closures. To date, the trail remains closed, and the City Geologist continues to monitor the area for any movement. Closure signage has been installed, and Open Space Management staff frequently monitor barriers, educate patrons, and enforce violations.



On July 30, a hotline call reported trash bins vandalized and found over the hillside at the picnic area near Sagebrush Walk Trail and Southshore Coastal Trail. Trump National Golf Staff was notified and asked to retrieve the trash bins.





On July 31, Rangers received a report from Trump National Golf Staff and contacted a group of approx 20 individuals along Founder's Park facing the beach in Ocean Trails. The group had "Trump 2020" and "Faith Over Fear" flags. Group was already in process of wrapping up event, and left shortly after Rangers arrived.



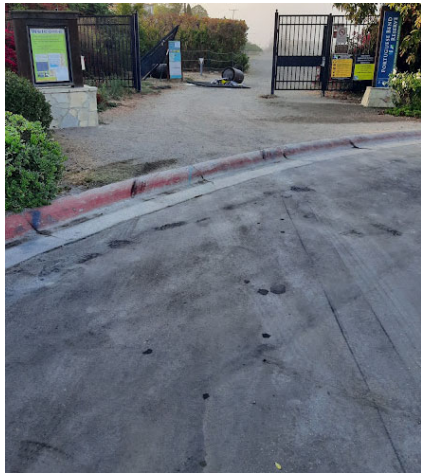
On August 23, Rangers reported "No Animals on the Beach" signs missing and/or vandalized to Trump National Golf Staff. Trump National Golf Staff indicated they would install a new signage. Rangers continued to educate patrons regarding no dogs on the beach, and enforce as needed.



### **Portuguese Bend Reserve**

	Public Contact	Education	Warning	Enforcement
Hikers	4,004	453	19	0
Dog	376	47	13	1
Biker	537	43	14	0
Equestrian	24	2	0	0

On July 3, Rangers received a call from Los Angeles County Sheriff's Department regarding a vehicle driving in Burma Road. Rangers were not able to locate the vehicle. Burma Road Gate had been vandalized, resulting in both vehicle panels in need of repairs. Witnesses provided statements, to Los Angeles County Sheriff's Department.





Public Works assisted in the removal of the vehicle panels, and temporary placement of water buffalos to deter unauthorized access into the Reserve.



On July 17, an unknown vehicle struck the fire hydrant located at Burma Road and Burrell Lane. Los Angeles County Fire Department were called to turn off the water. Park Rangers closed down the access point and guided patrons to alternative access points for public safety. The water flowed down Burma Road Trail, onto Kelvin Canyon Trail, and Gary's Gulch Trail. The City notified Cal Water for repairs and coordinated with CDFW and PVPLC for habitat mitigation, repairs, and blue line stream assessment.



Several trail closures and warning signage were erected to advise the public to use caution related to land movement, and trail erosion along or adjacent to trails. Park Rangers patrolled the area on a weekly basis and reported to Public Works and the City Geologist.

On August 6, Rangers observed damage to several wooden posts, traffic signage, and vehicle debris to the Lower Portuguese Bend area. The access points into the Reserve remained secured. Rangers set up temporary orange cones to deter unauthorized parking. "No Stopping Anytime" signage remained intact.



On September 9, 2021, a vehicle crashed into the remaining section of the Burma Road pedestrian gate. Los Angeles County Sheriff Department and Los Angeles County Fire Department responded and provided medical care and transport to the hospital. OSM responded and coordinated with Public Works for removal of remaining section of the gate panel for safety concerns.



### **San Ramon Reserve**

	Public Contacts	Education	Warning	Enforcement
Hikers	0	0	0	0
Dog	0	0	0	0
Biker	2	2	0	0
Equestrian	0	0	0	0



Rangers patrolled San Ramon several instances during this reporting period as a result of ongoing graffiti, and vandalism of City property, including tampering with City locks to access restricted vehicle access areas.

### **Three Sisters Reserve**

	Public Contacts	Education	Warning	Enforcement
Hikers	26	3	0	0
Dog	4	0	0	0
Biker	1	0	0	0
Equestrian	0	0	0	0

### **Vicente Bluffs Reserve**

	Public Contacts	Education	Warning	Enforcement
Hikers	345	19	0	4
Dog	34	7	0	0
Biker	9	0	0	0
Equestrian	0	0	0	0

On July 25, Park Rangers reported vandalism to the restrooms at Pelican Cove parking lot to Terranea Staff. The restroom facility had been tagged, as did the adjacent retaining wall on Tovemore Traill, and several signs damaged. Terranea staff was also notified of the incident. A report was submitted to GPC for proper removal.



On August 15, Rangers assisted with an emergency of a possible fractured ankle on the westside of the cove near Tovemore Trail. Los Angeles County Fire Department were on scene and transported the patient.



On September 6, Park Rangers reported vandalism to the restrooms at Pelican Cove parking lot to Terranea Staff. The restroom facility had been tagged, as were several signs. A report was submitted to GPC for proper removal.



Starting on September 24, Terranea Resort Staff closed the Pelican Cove parking lot after hours (one hour after sunset to one hour before sunrise) to deter vandalism, and unauthorized access to adjacent trails. OSM staff installed several posts, cables, and Rangers assisted in enforcing after hours use.



On September 29, Rangers received reports of graffiti on several large rocks along Terranea Way Trail. OSM reported the graffiti to GPC.



### **Vista del Norte Reserve**

	Public Contacts	Education	Warning	Enforcement
Hikers	0	0	0	0
Dog	0	0	0	0
Biker	0	0	0	0
Equestrian	0	0	0	0

During this reporting period, several “Public Trail” signs were reported, and replaced, as needed by the Sol y Mar HOA, who manages the public trails adjacent to the Vista del Norte Reserve. The City and PVPLC also coordinated with the identification of a spur trail. The HOA closed the spur trail. It is unknown who(m) created the spur trail.

### **City Parks**

Rangers educated patrons in City Parks regarding the City’s Municipal Code, including homeless individuals and encampments, use of drones, dogs off-leash, and dog park issues related to the maintenance of Eastview’s dog park, motorized bicycles, large group gatherings, unauthorized special events, and park hours.