

COMMUNITY DEVELOPMENT DEPARTMENT

January 18, 2023 LAX Community Noise Roundtable Meeting Summary

On January 18, 2023, the LAX Community Noise Roundtable held a regularly scheduled meeting to discuss a wide range of agenda items (Attached), including noise concerns caused by passenger jets arriving and departing from the Los Angeles International Airport. During the meeting, the Roundtable Chairman announced that the Federal Aviation Administration (FAA) has been working with the Los Angeles World Airport (LAWA) staff to resolve LAWA's aircraft noise concerns that could result from two new departure flight paths proposed by the FAA.

These two new flight paths are proposed to be implemented by passenger jet aircraft departing LAX between midnight and 6:30 a.m. These new routes pose a high risk of noise exposure to the Palos Verdes Peninsula because the routes bring departing flights closer to the Peninsula than the existing southbound flight path. In response to LAWA's objections and concerns, the FAA agreed to postpone the implementation of the flight paths and is now working with LAWA to resolve LAWA's concerns. LAWA staff reported that the FAA would be updating the LAX Roundtable at a future meeting concerning their collaboration. City staff has placed this item for discussion on the February 7, 2023 City Council Agenda.

During the January 18th meeting, LAWA staff also distributed passenger jet data for flights that occurred during November-December (Attached). The next Roundtable meeting will be on Wednesday, March 15, 2023, at 1:30 p.m. For more information concerning Roundtable meetings, please click the LAWA website [here](#) or contact LAWA staff David Chan at (424) 646-6508 or email dchan@lawa.org.





AGENDA
LOS ANGELES INTERNATIONAL AIRPORT/COMMUNITY NOISE ROUNDTABLE
Regular Meeting of the Roundtable

Wednesday, January 18, 2023 at 1:30 PM

In conformity with Assembly Bill 361 Section 3(e)(3) and due to concerns over COVID-19, this meeting will be conducted via video conference and broadcast live at <http://lax.to/RoundtableMtg>.

Public Comments:

To provide verbal comments during the meeting, please call **(213) 306-3065**, enter Meeting ID: **2453 808 2536**, press #, and then listen for instructions.

1:30 PM	1. Welcome/Review of the Meeting Format – <i>Gene Reindel, Roundtable Facilitator</i>	Information
1:35 PM	2. Call to order, Pledge of Allegiance, and Roll Call - <i>Denny Schneider, Roundtable Chairman</i>	Information
1:40 PM	3. Comments from the Public - Speakers are limited to a maximum of two minutes or less depending on the number of speakers. Roundtable members cannot discuss or take action on any matter raised under this item.	Information
1:55 PM	4. Reappointment of At-Large Members for Another Two-Year Term – <i>Roundtable Executive Secretary</i>	Action
2:05 PM	5. Report from Technical Working Group – <i>Jeff Moskin, Committee Chair</i>	Information
2:25 PM	6. Aircraft Noise Educational Series – <i>Gene Reindel, Facilitator</i>	Information
2:55 PM	7. Continuing Discussion on Roundtable Meeting Format & Schedule – <i>Roundtable Facilitator and Secretary</i>	Information/Action
3:25 PM	8. Roundtable Member Discussion - Opportunity for members to suggest potential future agenda items, raise noise issues or concerns, or inquire about the statistical update handout.	Information
3:40 PM	9. Review of Roundtable Formal Action Items – <i>Gene Reindel, Facilitator</i>	Information

Materials to be provided at meeting:

- Statistical Update on East Departures, Early Turns, Go- Arounds, and PV overflights

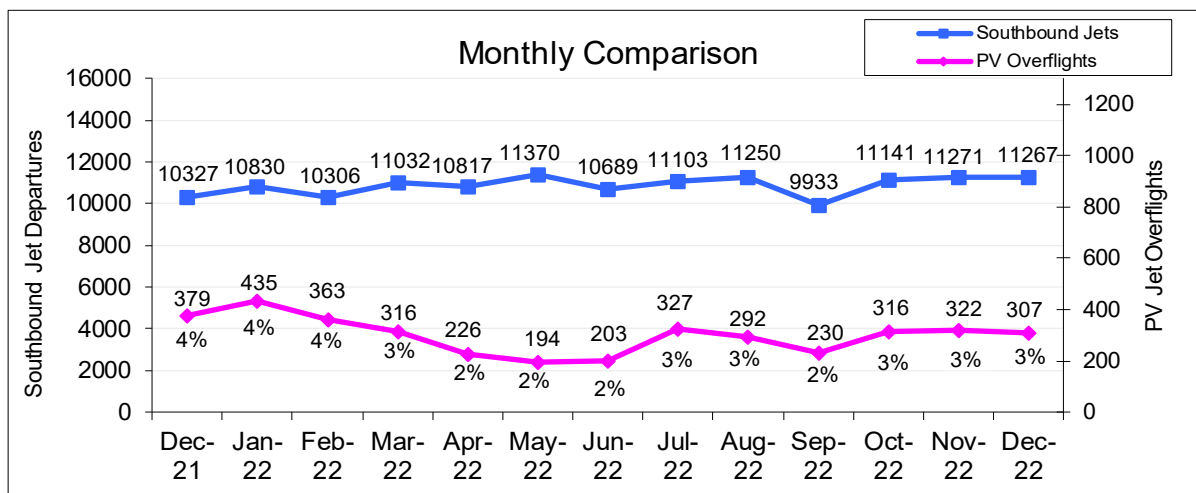
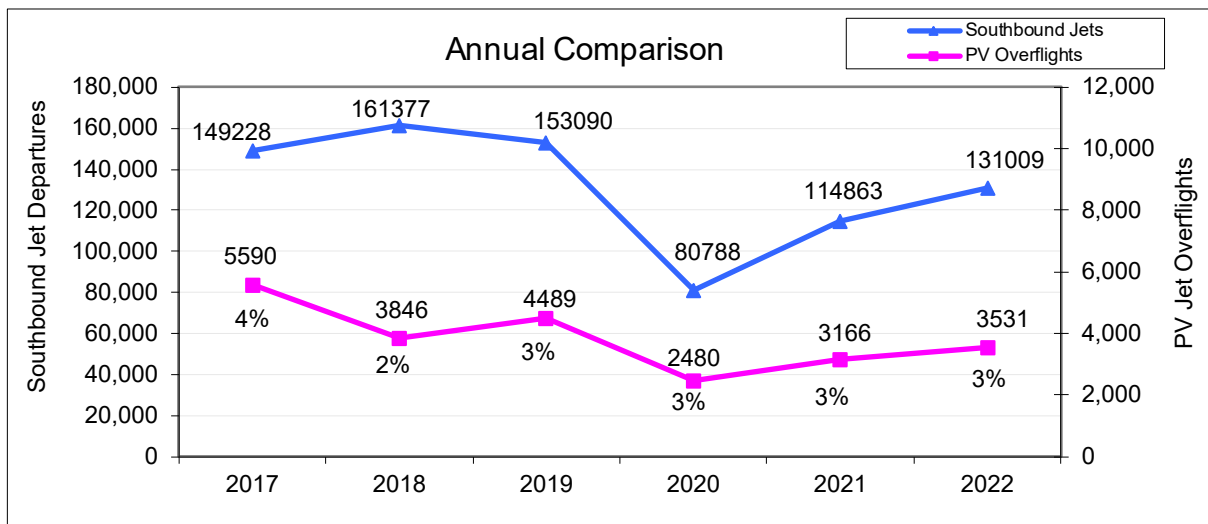
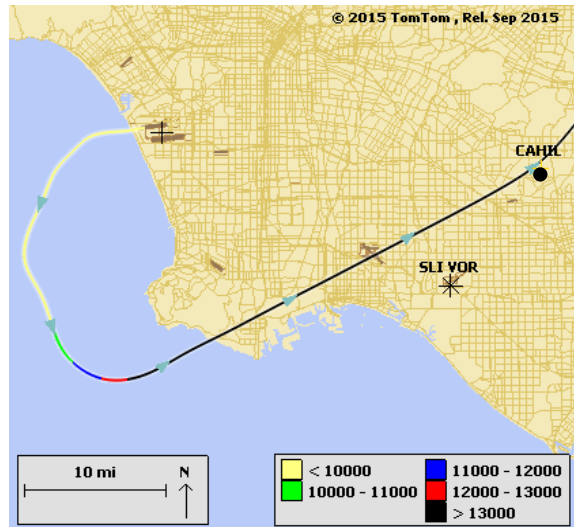
Additional information about the LAX/Community Noise Roundtable is available online at <http://www.lawa.org/LAXNoiseRoundTable.aspx>.

Sign language interpreters, communication access real-time transcription, assistive listening devices, or other auxiliary aids and/or services may be provided upon request. To ensure availability, you are advised to make your request at least 72 hours prior to the meeting you wish to attend. Due to difficulties in securing sign language interpreters, five (5) or more business days notice is strongly recommended. For additional information, please contact the LAWA ADA Coordinator at (424) 646-5005 or via California Relay Service at 711.

Palos Verdes Peninsula – Jet Overflights

The graphs below show the total number of jets turning south upon departure from LAX and the number of those departures that fly over the Palos Verdes Peninsula.

Sample Jet Departure Flight Track Over PV Peninsula



Jet Altitudes over PV Peninsula

