



## **City of Rancho Palos Verdes – Program Manager RPV LANDSLIDE COMPLEX WORKING GROUP MEETING AGENDA, NOTES, AND ACTION ITEMS**

Date/Time: January 17, 2024, 3:00 pm to 4:30 pm PST

Topic: **RPV Landslide Complex Working Group Meeting**

Attendees: **City of Rancho Palos Verdes:** Ara Mihranian, City Manager; Ramzi Awwad, Director of Public Works; David Copp, Deputy Director of Public Works; Cory Linder; Daniel Trautner; Jesse Villalpando; Brandy Forbes; Megan Barnes; Katie Lozano; Elena Gerli (attorney); John Fox (attorney)

**Hout Construction Services, Inc. (HCS):** Sam Hout, Program Manager; Jayme Fairfield, Document Control Manager

**Cotton, Shires and Associates, Inc.:** Mike Phipps

**Los Angeles County Disaster Management Area G:** Brandy Villanueva

**Klondike Canyon Landslide Abatement District (KCLAD):** Steve Cummins; Scott Kerwin (Geologist)

**Abalone Cove Landslide Abatement District (ACLAD):** Gordon Leon; Scott Kerwin (Geologist)

**Seaview Residents Association:** Kit Song, Rayne Sherman (Alternate)

**Portuguese Bend Community Association (PBCA):** Kent Attridge, Claudia Gutierrez (Alternate)

**Portuguese Beach Club HOA:** Michael Barth, Andrew Ely, Eric Johnson

**Palos Verdes Peninsula Land Conservancy:** Cris Sarabia

**Cal Water:** Angie Gilbride, Carmelo Sorce, Ralph Felix, Augie Beaza, Kevin McCusker, Ronald Sorensen

**Southern California Gas Company (SoCal Gas):** Ben Steinberger

**Southern California Edison (SCE):** Holly Essler, Mudila Kangulungu, Celina Luna (Alternate), Constance Turner (Alternate)

**Frontier Communications:** Doug McAllister, Ramiro De La Cruz, William Kearns, Stephen McDonald

**Los Angeles County Public Works (LACPW):** Robert Swartz

**Los Angeles County Sanitation District (LACSD):** Kevin Kim, Daniel Kim

**City of Rolling Hills:** David Ready, Christian Horvath, Karina Banales (City Manager)

**Rolling Hills Community Association:** Kristen Raig

**Wayfarer's Chapel:** Rev. Dr. David Brown, Dan Burchett, Ben Gunter

Additional Community Attendees: Kathy, Marianne, Peter Shaw, Sha, Kathryn Bishop, Bob Locke, Karen Miller, Max Barth, Sheri Hasting, Nikki Noushkam, Peter Gottschalk

(Note: Those in attendance are in black; not in attendance are in gray)

---

Working Group Purpose: *"We are committed to evaluating and addressing every concern the community has for this important initiative. We will look to share information and ideas amongst all the major stakeholders and initiate short-term measures for proactive success. The community has spoken and the City is taking action."*

**City of Rancho Palos Verdes – Program Manager  
RPV LANDSLIDE COMPLEX WORKING GROUP  
MEETING AGENDA, NOTES, AND ACTION ITEMS**

Item	Presenter(s)
<b>DISCUSSION ITEMS</b>	
<b>Los Angeles County Disaster Management AREA G</b> <ul style="list-style-type: none"> <li>Jesse Villalpando developed a Memorandum of Understanding with the Salvation Army for emergency response. He also reached out to the Torrance YMCA.</li> <li>The communication tree has been drafted for the City Manager, Ara Mihranian.</li> <li>Jesse is also in progress on the FEMA storm damage reimbursement application, and will be meeting with FEMA on 1/22/2024.</li> <li>Jesse is scheduling a meeting with emergency responders for the week of 1/22/2024.</li> <li>KCLAD is financially okay, but is working to obtain some FEMA reimbursement.</li> </ul>	Brandy Villanueva Jesse Villalpando
<b>Geotechnical Updates</b> <ul style="list-style-type: none"> <li>Update</li> </ul>	Ramzi Awwad Mike Phipps Scott Kerwin
<b>Updates on Current, Short-Term, and Long-Term Mitigation Projects</b> <ul style="list-style-type: none"> <li>Refer to the spreadsheet "RPV_Landslide_Complex_Working_Group_Project_Tracking.xlsx"</li> </ul>	Ara Mihranian Ramzi Awwad
<b>Coordination with the City of Rolling Hills</b> <ul style="list-style-type: none"> <li>No updates this week.</li> </ul>	Ara Mihranian Karina Banales
<b>General Comments or Questions</b> <ul style="list-style-type: none"> <li>Ara Mihranian was in Sacramento last week and met with Councilmembers Cruikshank and Alegria. They met with Senator Ben Allen, Assemblyman Al Muratsuchi, and other state representatives to discuss the local emergency, land movement data, mitigations, and options. At an appropriate time, the City may ask for a California State of Emergency or Federal State of Emergency. This meeting was a step in the right direction, as Allen and Maratsuchi wanted to know what the City's needs/requests were. Based on the scope and breadth of the landslide, some in-kind services are needed. Also, Allen and Muratsuchi will see what can be done with FEMA to implement mitigations without jeopardizing the grant funding. Kit Song asked if letters from the residents would be helpful; Ara responded that he doesn't think that it's necessary now.</li> <li>Marianne (resident) asked about well above the landslides. The geologists have stated that wells in that location(s) will not be effective.</li> <li>Sheri Hasting (resident) has lived near the spring near Vanderlip for more than 40 years. She stated that there is normally water in the spring/creek this time of year. Currently, it is dry, but is flowing in other areas at about 50 gpm. Geologists should further investigate this condition. Ramzi Awwad suggested that the Klondike mitigations may be useful in this location. Ramzi and Gordon Leon will schedule an investigation/site visit before the next anticipated rain.</li> <li>Gordon Leon will contact WSP for a backup geologist for Scott Kerwin while he is out of the office for the next six weeks.</li> <li>Wayfarer's Chapel is having Ohana Surveying add survey/monitoring points to measure land movements. In the past month, they saw 5.4" at the edge of the slide. See their most recent survey data below this table.</li> </ul>	Working Group
<b>NEXT MEETING</b>	

## City of Rancho Palos Verdes – Program Manager RPV LANDSLIDE COMPLEX WORKING GROUP MEETING AGENDA, NOTES, AND ACTION ITEMS

Item	Presenter(s)
<ul style="list-style-type: none"> <li>Weekly Status Meeting: Occurs every Wednesday at 3:00 pm PST. Next meeting is 1/24/2024.</li> <li>Regular Meeting Format: This meeting will be held virtually via Teams. For a Teams link, please email Jayme Fairfield at <a href="mailto:jfairfield@houtconstruction.com">jfairfield@houtconstruction.com</a>.</li> <li>Notes from past meetings can be found on the City's website at this link: <a href="http://RPV Landslide Complex Working Group   Rancho Palos Verdes, CA - Official Website (rpvca.gov)">RPV Landslide Complex Working Group   Rancho Palos Verdes, CA - Official Website (rpvca.gov)</a>.</li> </ul>	Ara Mihanian Jayme Fairfield

### Ohana Land Surveying

24040 Camino Del Avion Ste. #E253  
Monarch Beach, CA 92629  
(949) 233-0739



### Monitoring Survey:

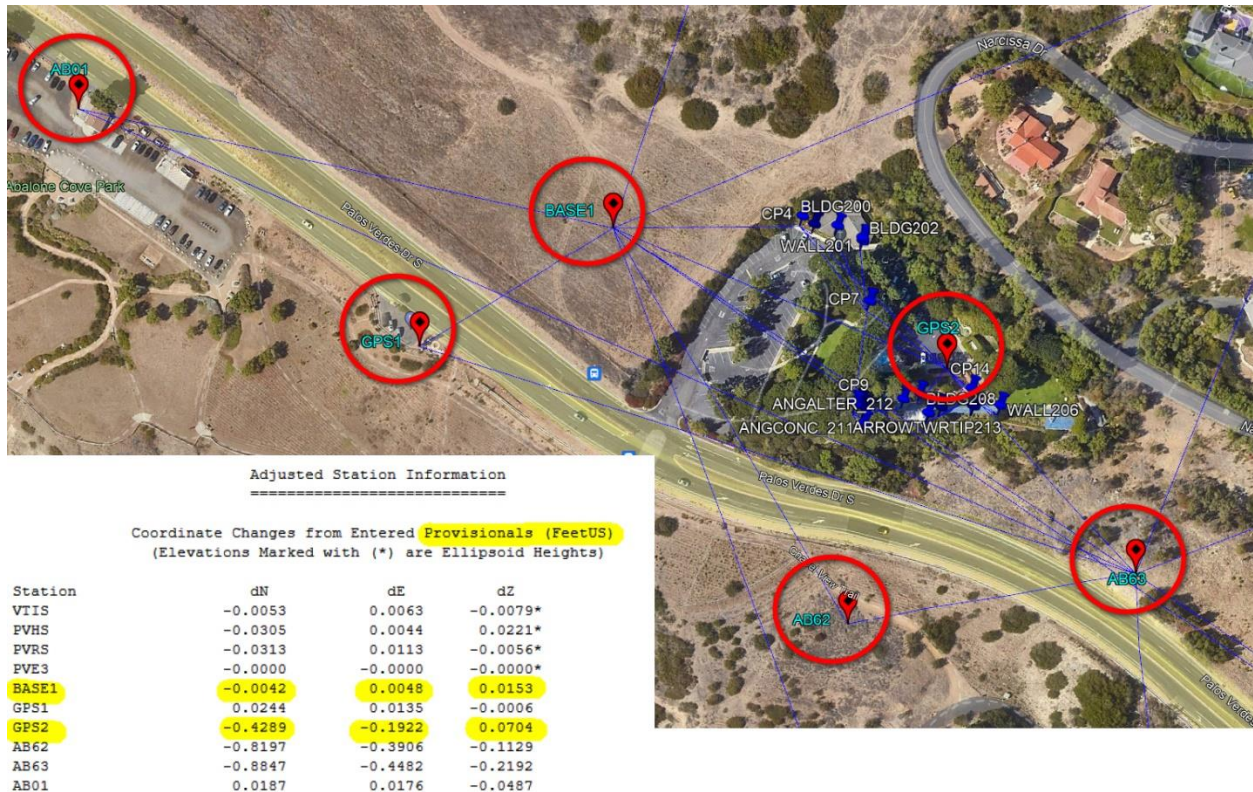
5755 Palos Verdes Drive South  
Ranch Palos Verdes, CA 90275

#### 1st. CHECK (M1-M2)

Date Timeline: (M1)11-28-2023 To (M2)12-30-2023						
Crew: Ohana						
POINT NUMBER	COORDINATE	COORDINATE CHECK	Horiz Movement	ELEVATION	ELEVATION CHECK	Vertical Movement
<b>STRUCTURE SITE MARKERS</b>						
	M1	M2	DIFF	M1	M2	DIFF
#200 BLDG MKR	N: 1,729,438.10 E: 6,446,790.65	N: 1,729,438.01 E: 6,446,790.48	0.09 -0.17	217.25	217.28	0.03
#201 WALL MKR	N: 1,729,423.90 E: 6,446,828.46	N: 1,729,423.63 E: 6,446,828.32	-0.27 -0.14	212.16	212.11	-0.05
#202 BLDG MKR	N: 1,729,428.19 E: 6,446,827.31	N: 1,729,427.92 E: 6,446,827.11	-0.27 -0.20	215.43	215.42	-0.01
#203 CHIS "X" CONC	N: 1,729,435.40 E: 6,446,759.37	N: 1,729,435.41 E: 6,446,759.27	0.01 -0.10	207.49	207.50	0.01
#204 FACE CLMN MKR	N: 1,729,219.05 E: 6,446,980.60	N: 1,729,218.59 E: 6,446,980.42	-0.46 -0.18	216.55	216.55	
#205 FACE CLMN MKR	N: 1,729,228.64 E: 6,447,024.00	N: 1,729,228.11 E: 6,447,023.79	-0.53 -0.21	215.46	215.47	0.01
#206 FACE WALL MKR	N: 1,729,235.86 E: 6,447,058.43	N: 1,729,235.25 E: 6,447,058.23	-0.61 -0.20	217.48	217.46	-0.02
#207 CHIS "X" CONC	N: 1,729,228.17 E: 6,447,022.86	N: 1,729,227.65 E: 6,447,022.65	-0.52 -0.21	213.86	213.88	0.02
#208 BLDG MKR	N: 1,729,231.24 E: 6,446,947.70	N: 1,729,230.86 E: 6,446,947.49	-0.38 -0.21	221.15	221.15	
#209 WALL NAIL-WSHR	N: 1,729,198.23 E: 6,446,877.59	N: 1,729,197.99 E: 6,446,877.35	-0.24 -0.24	220.01	220.06	0.05
#210 CHIS "X" CONC	N: 1,729,205.41 E: 6,446,868.61	N: 1,729,205.16 E: 6,446,868.37	-0.25 -0.24	215.87	215.91	0.04
#211 ANG-CONC MKR	N: 1,729,177.55 E: 6,446,881.06	N: 1,729,177.30 E: 6,446,880.80	-0.25 -0.26	214.85	214.92	0.07
#212 ANG-ALTER MKR	N: 1,729,220.23 E: 6,446,926.81	N: 1,729,219.90 E: 6,446,926.57	-0.33 -0.24	217.25	217.25	
#213 ARROW_TIP TWR-MIDPT	N: 1,729,207.72 E: 6,446,965.68	N: 1,729,207.28 E: 6,446,965.49	-0.44 -0.19	229.70	229.70	
CP-4 CHIS "X" CONC	N: 1,729,443.34 E: 6,446,741.30	N: 1,729,443.39 E: 6,446,741.23	0.05 -0.07	207.03	207.04	0.01
CP-7 CHIS "X" CONC	N: 1,729,343.40 E: 6,446,853.43	N: 1,729,343.12 E: 6,446,853.22	-0.28 -0.21	210.80	210.83	0.03
CP-9 CHIS "X" CONC	N: 1,729,201.48 E: 6,446,863.50	N: 1,729,201.25 E: 6,446,863.26	-0.23 -0.24	214.87	214.92	0.05
CP-14 BRASS PIN	N: 1,729,251.68 E: 6,447,015.61	N: 1,729,251.18 E: 6,447,015.39	-0.50 -0.22	213.46	213.46	
GPS-2	N: 1,729,286.21 E: 6,446,976.96	N: 1,729,285.77 E: 6,446,976.76	-0.44 -0.20	214.81	214.84	0.03
BASE-1	N: 1,729,396.80 E: 6,446,485.61	N: 1,729,396.80 E: 6,446,485.62		192.28	192.30	0.02



## City of Rancho Palos Verdes – Program Manager RPV LANDSLIDE COMPLEX WORKING GROUP MEETING AGENDA, NOTES, AND ACTION ITEMS



See the project tracker for the following items. The images and information correspond to the projects/items listed. The file name is:

“2024-01-17\_RPV\_Landslide\_Complex\_Working\_Group\_Project\_Tracking.xlsx”

### Row 8: Public Outreach for Trails Conditions

Dan Trautner presented the Preserve land movement report for the week of 1-15-2024 for the group's consideration. Below you will find photos for reference where indicated. The marker numbers corresponding to markers on the Land Movement Locations google maps page.

#### Lay Reserve

- Unnamed Vehicle Access Trail: Increased activity on the unnamed vehicle access trail east of Plumtree Trail. A large drop or shift appears to have emphasized a second fissure, creating a graben or recessed area. The fissures appear to extend southeast towards the small putting green visible on the google maps link. There has been evidence of unauthorized use of this trail, most notably by equestrians, prompting expedited upgrades to the Plumtree Gate to allow access for the community to Plumtree Trail. (Pages 1 and 2, LR LM 02)
- Unauthorized Trail from Cinnamon: Increased and new activity noted on the unauthorized trail extending north from Cinnamon Lane. New holes are developing throughout the area. (Page 3, LR LM 01)

#### Abalone Cove Reserve

- Smuggler's Trail: increased activity at the junction of Smuggler's and Olmsted trails, with holes and fissures extending up along the trail and in the surrounding landscape up to the overlook areas. A particularly deep and large hole reopened just before Smuggler's Trailhead on Olmsted Trail. (Page 4, AB LM 08, and Page 5, AB LM 13)

**City of Rancho Palos Verdes – Program Manager  
RPV LANDSLIDE COMPLEX WORKING GROUP  
MEETING AGENDA, NOTES, AND ACTION ITEMS**

**Portuguese Bend Reserve**

- Burma Road: continued activity in multiple areas along the trail, most notably near Lower Rim Trail, Panorama Trail, Barn Owl Trail, and southeast of Toyon Trail. (Page 6, PB LM 09 and PB LM 19. Page 7, PB LM 04)
- Landslide Scarp Trail: Three large and deep holes have reopened near the junction with Burma Road. These holes continue to grow significantly wider and deeper despite being filled previously by OSM staff and volunteers. (Page 8, PB LM 27)
- Garden Trail: The trail continues to split, with portions of the daylight edge elevating 2-plus feet and the toe side dropping severely. (Page 9, PB LM 26)

**Other items, work completed, follow up questions:**

- OSM staff repaired and filled in a hole connected to a fissure on Flying Mane Trail in Forrestal Reserve. (Page 10, FOR LM 01)
- Trail Crew volunteers filled in a hole connected to a fissure on Ishibashi Farm Trail, outside the Preserve, north of PV Drive South. (Page 11, near PB LM 18)



**City of Rancho Palos Verdes – Program Manager  
RPV LANDSLIDE COMPLEX WORKING GROUP  
MEETING AGENDA, NOTES, AND ACTION ITEMS**

**Page 1: LRLM 02**, Lay Reserve, unnamed vehicle access trail east of Plumtree Trail





**City of Rancho Palos Verdes – Program Manager  
RPV LANDSLIDE COMPLEX WORKING GROUP  
MEETING AGENDA, NOTES, AND ACTION ITEMS**

**Page 2:** ...continued **LRLM 02**, Lay Reserve, unnamed vehicle access trail east of Plumtree Trail





**City of Rancho Palos Verdes – Program Manager  
RPV LANDSLIDE COMPLEX WORKING GROUP  
MEETING AGENDA, NOTES, AND ACTION ITEMS**

**Page 3: LR LM 01**, Lay Reserve, unnamed unauthorized trail north of Cinnamon Lane





**City of Rancho Palos Verdes – Program Manager  
RPV LANDSLIDE COMPLEX WORKING GROUP  
MEETING AGENDA, NOTES, AND ACTION ITEMS**

**Page 4: AB LM 08, Abalone Cove, Junction of Olmsted and Smugglers Trail**





**City of Rancho Palos Verdes – Program Manager  
RPV LANDSLIDE COMPLEX WORKING GROUP  
MEETING AGENDA, NOTES, AND ACTION ITEMS**

**Page 5: AB LM 13, Abalone Cove, upper portion of the Smuggler's Viewpoint / Overlook area**





**City of Rancho Palos Verdes – Program Manager  
RPV LANDSLIDE COMPLEX WORKING GROUP  
MEETING AGENDA, NOTES, AND ACTION ITEMS**

**Page 6: PB LM 09 (top), PB LM 19 (bottom), Portuguese Bend, Burma Road near Lower Rim Trail**





**City of Rancho Palos Verdes – Program Manager  
RPV LANDSLIDE COMPLEX WORKING GROUP  
MEETING AGENDA, NOTES, AND ACTION ITEMS**

**Page 7: PB LM 04**, Portuguese Bend, Burma Road southeast of junction with Ishibashi and Toyon Trails





**City of Rancho Palos Verdes – Program Manager  
RPV LANDSLIDE COMPLEX WORKING GROUP  
MEETING AGENDA, NOTES, AND ACTION ITEMS**

**Page 8: PB LM 27, Portuguese Bend, Landslide Scarp Trail near Burma Road**



**City of Rancho Palos Verdes – Program Manager  
RPV LANDSLIDE COMPLEX WORKING GROUP  
MEETING AGENDA, NOTES, AND ACTION ITEMS**

**Page 9: PB LM 26, Portuguese Bend, Garden Trail**





**City of Rancho Palos Verdes – Program Manager  
RPV LANDSLIDE COMPLEX WORKING GROUP  
MEETING AGENDA, NOTES, AND ACTION ITEMS**

**Page 10:** [FOR LM 01](#), Forrestal, Flying Mane Trail at the top of switchbacks





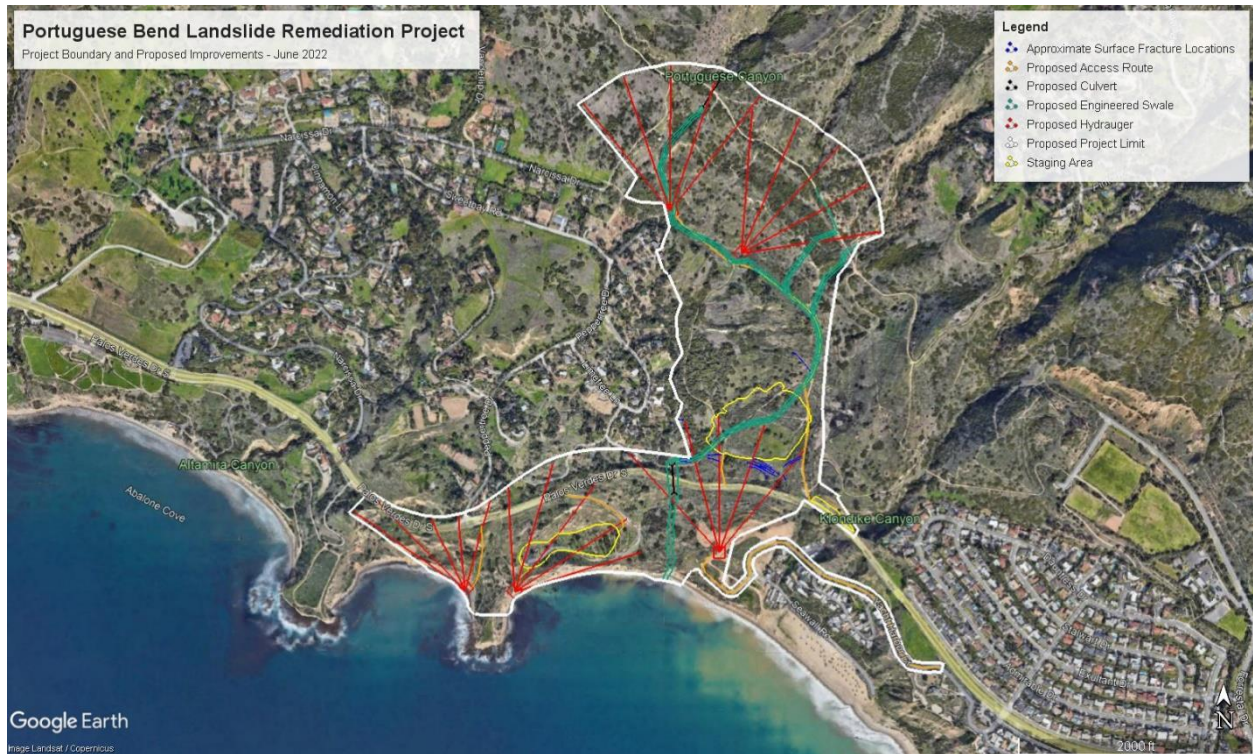
**City of Rancho Palos Verdes – Program Manager  
RPV LANDSLIDE COMPLEX WORKING GROUP  
MEETING AGENDA, NOTES, AND ACTION ITEMS**

**Page 11: Near PBLM 18, outside of Portuguese Bend, Ishibashi Farm Trail north of PV Drive South**





# City of Rancho Palos Verdes – Program Manager RPV LANDSLIDE COMPLEX WORKING GROUP MEETING AGENDA, NOTES, AND ACTION ITEMS



## City of Rancho Palos Verdes – Program Manager RPV LANDSLIDE COMPLEX WORKING GROUP MEETING AGENDA, NOTES, AND ACTION ITEMS

### Row 12: Leaning SCE Poles

A Frontier box (image below) has been hanging loose from the power lines for many months, location is in hills behind dauntless drive. When the box fell on the line, it caused power disturbance and eventual power outage. Frontier says it is not an urgent matter, but it is an urgent matter for the residents affected.

Frontier stated that will look at this on 1/19/2024. They also stated that the black box in the photo is not the actual equipment, but is a plastic cover for the equipment.





## Project Tracker for RPV Landslide Complex Working Group

Project Name	Project Description	Type	Area of Work	Responsible Agency
Road Repairs in Seaview Neighborhood	Repairs to minimize water infiltration in the Seaview neighborhood	Roadway Repairs	Residential	City (RPV)
Declaration of Local Emergency	Updates and guidance on local state of emergency	Landslide Mitigation	Portuguese Bend Landslide Complex	City (RPV)
Landslide Movement GPS Surveying	Regular GPS surveying of landslide monitoring points and reporting of data	Landslide Mitigation	Portuguese Bend Landslide Complex	City (RPV)
Portuguese Bend Landslide EIR and Final Engineering	Finalize EIR and complete final engineering for the Portuguese Bend Landslide Project	Landslide Mitigation	Portuguese Bend Landslide Complex	City (RPV)



Public Outreach for Trails Conditions	Notify Residents of Hiking Trail Conditions	Recreation	Nature Preserve	City (RPV)
Drainage Pipe at PVDS and Peppertree	Upgrading drainage pipe at PVDS and Peppertree (This project will be partially funded by the FEMA LPDM grant when awarded)	Landslide Mitigation	PVDS at Peppertree	City (RPV)
PVDS Sewer Trunk Line	Maintenance of the LA County Sanitation Districts sewer lines on PVDS	Utility	PVDS	Los Angeles County Sanitation District (LACSD)
PBCA Sanitary Sewers	Inspect the below-ground sanitary sewer lines in the Portugese Bend Community	Utility	Portuguese Bend Community	City Public Works



Leaning SCE Poles	Repair Leaning Power Poles	Utility	Seaview Area and Preserve	Southern California Edison (SCE)
Gas Lines Throughout Landslide Area	Conduct inspections, repairs, and enhancements to gas lines in all SoCal Gas service areas within the landslide	Landslide Mitigation	Portuguese Bend Landslide Complex	Southern California Gas Company (SoCal Gas)
Temporary Above Ground Water Main Relocation at Dauntless/Exultant	Install new above-ground water temporary main line	Utility	Seaview Area	Cal Water
Long-Term Above-Ground Pipe Protection	Develop and implement a plan to protect the new above-ground pipes, including water and other above-ground utilities	Utility	Seaview and other areas that require above-ground piping	City (RPV)
Above Ground Water Main Relocation on Narcissa	Install new above-ground water main line	Utility	Portuguese Bend Community Association	Cal Water
Klondike Canyon Culvert Under PVDS	Pipe and culvert assessment and repairs	Landslide Mitigation	Klondike Canyon Landslide Abatement District (KCLAD)	KCLAD

KCLAD Surface Drainage North of PVDS and Below Admirable Dr to Klondike Canyon	Install a new pipe along PVDS to drain the hillside at the bottom of Admirable Dr to Klondike Canyon, and discharge the water to the ocean	Landslide Mitigation	PVDS	KCLAD
Install Dewatering Well in Klondike Canyon Landslide Abatement District	Install new dewatering wells in KCLAD	Landslide Mitigation	Klondike Canyon Landslide Abatement District (KCLAD)	KCLAD
Klondike Canyon Fissure Repair	Fill and/or repair the fissures at the top of Klondike Canyon	Landslide Mitigation	Klondike Canyon Landslide Abatement District (KCLAD)	KCLAD
ACLAD Activities	Well maintenance, water table measurements, and system water production	Landslide Mitigation	Abalone Cove Landslide Abatement District (ACLAD)	ACLAD
Four RPV Wells South of PVDS	Drill Four RPV Replacement Wells South of PVDS	Landslide Mitigation	Seaward/PVDS in Abalone Cove	ACLAD, RPV



PVDS Culvert Repair	Repair landslide damaged cracks	Landslide Mitigation	PVDS and Altamira Canyon	ACLAD, RPV
Altamira Canyon Lining	Line Altamira Canyon to keep surface flow from entering the ground	Landslide Mitigation	Altamira Canyon	ACLAD, RPV, and LA County
Road Repairs in the Portuguese Bend Community Association (PBCA)	Repairs to minimize water infiltration in the PBCA	Roadway Repairs	PBCA Residential	PBCA Board of Directors

Last Updated

1/23/2024

Status (rows can be expanded for earlier dated notes)	Timeline
1/17/2024: - The City's Public Works Department continues to fill and/or seal new cracks as they appear. Tarps have been used in some areas because filling is not feasible.	Ongoing
1/17/2024: - City Council will review the emergency declaration again on 2/6/2024. A Staff Report will be sent out one week prior. - Ara Mihranian was in Sacramento last week and met with Councilmembers Cruikshank and Bradley. They met with Senator Ben Allen, Assemblyman Al Muratsuchi, and other state representatives to discuss the local emergency, land movement data, mitigations, and options. At an appropriate time, the City may ask for a California State of Emergency or Federal State of Emergency.	Ongoing
1/17/2024: - January surveys started last week. A report should be ready for distribution in about one week. - The process for the surveys and reports are: 1) conduct survey, 2) City staff review, 3) City geologists review, 4) finalize report, and 5) Distribute report. This report process takes about two weeks from the completion of the physical survey. - The City is planning to increase the frequency of surveys/monitoring to monthly. - The City is looking at other survey methods and will present those to City Council as they have more information.	Ongoing
1/17/2024: - No updates.	8/31/2025



<p>1/17/2024:</p> <ul style="list-style-type: none"> <li>- Daniel Trautner and Cory Linder presented maps and photos regarding the trails conditions. These are copied into the agenda.</li> <li>- Unauthorized access/use of the closed trails has been observed, including horse tracks.</li> <li>- Significant movement in the last week was observed by widening of existing fissures, new fissures, drops, and holes.</li> <li>- The City continues to fill some/specific fissures and holes. The City is prioritizing resources based on access for emergency responders and to the dewatering wells.</li> <li>- Trails are closed due to safety concerns at the recommendation of the City geologist(s).</li> <li>- The City will consider adding "unstable ground/landslide" to the signage.</li> <li>- The Dauntless/Admirable area is now moving at a lesser rate, but sewer lines will continue to be inspected every one to two weeks. LACSD requests readings.</li> </ul>	Ongoing
<p>1/17/2024:</p> <ul style="list-style-type: none"> <li>- The City prepared a response to FEMA.</li> </ul> <p>1/10/2024:</p> <ul style="list-style-type: none"> <li>- No updates.</li> </ul>	TBD
<p>1/17/2024:</p> <ul style="list-style-type: none"> <li>- The City is still waiting for a schedule from LACSD on the guardrail install/construction.</li> </ul>	11/17/2023
<p>1/17/2024:</p> <ul style="list-style-type: none"> <li>- The City completed inspections of hot spot locations. The found very few areas of cracking or deviations.</li> <li>- The City will put together a sewer inspection protocol.</li> </ul>	TBD

<p>1/17/2024:</p> <ul style="list-style-type: none"> <li>- Frontier Communications will be at Nikki Noushkam's property on 1/19/2024, 8:00 am. Nikki stated that the repaired pole is still leaning. The guidewire was installed incorrectly. Ara Mihranian will find out from SCE what the schedule is and any other infoformation.</li> <li>- See the agenda for a photo of dangling Frontier equipment cover.</li> </ul>	Ongoing
<p>1/17/2024:</p> <ul style="list-style-type: none"> <li>- There was a fractured gas line yesterday, and it is being repaired today.</li> <li>- Jayme Fairfield will reach out to Ben Steinberger for an update.</li> </ul>	Ongoing
<p>1/17/2024:</p> <ul style="list-style-type: none"> <li>- The last/third phase in Seaview was tied in on 1/12/2024. All planned lines in the Seaview neighborhood are now completed.</li> <li>- Design for future pipe replacements in other areas is underway.</li> </ul>	Ongoing
<p>1/10/2024:</p> <ul style="list-style-type: none"> <li>- Since the City's geologist will peer review the plans, Cal Water will use a different geology company to prepare the plans to avoid a conflict of interest.</li> <li>- Cal Water designers are working in parallel while a geologist is onboarding. Cal Water's consultant Water Works is the designer and they have a preferred geologist.</li> </ul>	TBD
<p>1/17/2024:</p> <ul style="list-style-type: none"> <li>- The materials for the Clovetree project will arrive on 2/5/2024. The construction will be scheduled after that and will take approximately three weeks.</li> </ul>	Ongoing
<p>1/17/2024:</p> <ul style="list-style-type: none"> <li>- The 1/12/2024 field meeting was productive. Ramzi Awwad will share the photos at Dauntless/Exultant and at the head of the landslide.</li> <li>- The culvert outlet at the beach is getting a lot of wave action and erosion. It requires regular cleaning/clearing, and KCLAD is staying on top of that.</li> </ul>	Ongoing



<p>1/17/2024:</p> <ul style="list-style-type: none"> <li>- KCLAD has a topographic map of the canyon floor and pipe profile. They are looking at ways to protect the pipe at junctions and on slopes, and expect a plan in about one week.</li> </ul>	TBD
<p>1/17/2024:</p> <ul style="list-style-type: none"> <li>- Pump readings were distributed. Steve Cummins always sends the reading to Kit Song. Kit will include these in his Seaview distribution.</li> <li>- The water depths are still dropping at about 4 feet per week.</li> <li>- Total pumping is at 189 gpm.</li> <li>- The next reading is next week.</li> </ul>	Ongoing
<p>1/17/2024:</p> <ul style="list-style-type: none"> <li>- The City maintenance crew has done a great job at the head of the slide with clearing, tarping, and sand bagging.</li> <li>- There is a dangerous area, and kids have been sliding on the tarps. The City field staff will address this.</li> <li>- The most critical fissure to fill at the top/edge of the landslide is filled and tarped, and it conveys water to the appropriate drainage. The City will continue to maintain the fissure mitigations.</li> </ul>	Ongoing
<p>1/17/2024:</p> <ul style="list-style-type: none"> <li>- On the night of 1/15/2024, a steel line separated from the systems meter. ACLAD worked to fix the break and valve. The system is now operational.</li> </ul>	Ongoing
<p>1/17/2024:</p> <ul style="list-style-type: none"> <li>- Wells #18, #19, and #20 at the west of Altamira Canyon are drilled.</li> <li>- Well #9 is drilled and ready for development.</li> <li>- Portuguese Bend neighborhood well on lower Narcissa is drilled and ready for development.</li> <li>- Well #9 and on Cinnamon required a bucket driller instead of an auger, so the drilling was slower.</li> <li>- Electrical for the wells below PVDS is being installed. The wells should be operational at the end of January.</li> </ul>	Feb-24

1/17/2024: - The culvert lining is removed and ready for expansion base and new lining. It will continue after the upcoming anticipated rain.	Dec-23
1/10/2024: - Conducted a meeting and field tour earlier today with LACPW. - There is still no definitive path forward, but positive headway was made.	TBD
1/17/2024: - Five sections of roadway are in danger of becoming impassable. The repairs from one month ago already needs repair again, including drainage work.	Ongoing
1/10/2024:	