

MEMORANDUM

Date: October 1, 2023
To: Katie Lozano, Sr. Administrative Analyst, City of Rancho Palos Verdes
Norma Saldaña, Recreation Supervisor, City of Rancho Palos Verdes
From: Taylor Fox, Senior Park Ranger
Subject: 3rd Quarter Rancho Palos Verdes Preserve Enforcement Report

PRESERVE VISITOR CONTACTS SUMMARY

July 1 – September 30, 2023

4 Full-time Park Rangers patrolled the Preserve approximately 2,080 hours during this period.

3 Part-time Parking Enforcement assisted with education and enforcement of Park Mobile Reservation System at Crenshaw Boulevard and the Residential Recreational Parking Program on Park Place.

Agency Coordination, Trainings, and Interpretive Events:

4th of July Event: The Open Space Management (OSM) Division participated in the City's 4th of July Celebration to share information about the trails and wildlife seen in the Peninsula. An estimated 300 people visited the OSM Booth.



Troop 378 Eagle Court of Honor: Park Rangers attended the event to recognize and celebrate the completed projects of 3 Eagle Scouts whose work took place at Abalone Cove Park: Shubham Waldiya, Ethan Chao, and Aaron Chee.



B.A.R.K. Ranger Event: On August 19, Staff hosted a booth to share information on how dogs can become a B.A.R.K. Ranger. B.A.R.K. stands for Bag your pet's waste, Always on Leash, Respect Wildlife, and Know where you can go. Dogs and their owners received information on foxtails, ticks, rattlesnakes, and the importance of staying on a leash and on trail.



3 Monthly City-PVPLC NCCP/HCP Coordination Meetings: City and PVPLC staff meet monthly to coordinate Palos Verdes Nature Preserve (Preserve) operations and maintenance, and to implement the City's Natural Communities Conservation Plan/Habitat Conservation Plan (NCCP/HCP).

3 Monthly City-PVPLC Volunteer Trail Watch Coordination Meetings: The City's OSM Staff holds monthly meetings with the Volunteer Trail Watch to coordination on public use and public education topics.

Cityworks Implementation / Training (Summer 2023): Open Space Management began the process to implement CityWorks: a system that helps track maintenance related

work, capture labor, equipment, and materials cost, as well as assess priority levels for work in the Preserve.

Los Angeles County-Wide Trails Task Force Quarterly Meeting (September 7): The City is a member of the Los Angeles County-wide Trails Task Force. Main topics of the meeting included discussion on the impacts of winter rains on trails and multilingual signage on regulatory and interpretive panels.

Eagle Scout Project: Christopher Kinoshita (September 16) Scout Kinoshita from Troop 378 completed his Eagle scout project at Abalone Cove Park. Mr. Kinoshita led a group of scouts installing a 100-foot section of 5-foot tall vertical posts that were 8 feet long to match the existing fencing.

MPA Training for Officers and Enforcement Partners (September 20): Park Rangers participated in a half day training to learn about the science of MPAs, MPAs of Los Angeles County, and local practices and perspectives.

Beach Clean-Up: Cub Scout Pack 970 and Boy Scout Troop 783 (September 23): Park Rangers assisted several volunteers by providing information and clean-up supplies to conduct a beach clean-up at Vicente Bluffs Reserve in honor of National Public Lands Day and Coastal Clean-up Day.

Eagle Scout Project: Graham Johnson (September 24): Scout Johnson from Troop 128 completed his Eagle scout project at Prickly Pear Trail in the Alta Vicente Reserve. Mr. Johnson led a group of scouts installing a wooden fencing to delineate the trail and discourage off trail use given high activity of cactus wren.

Project/Operations Coordination & Emergency Work:

OSM Staff help to coordinate multiple projects within the Preserve to ensure NCCP / HCP compliance together with the Preserve Habitat Manager (PVPLC). Some of these coordination tasks include project management, implementing trail closures, public safety measures, and providing public notification. Below are a list of projects OSM staff helped coordinate with the Public Works Department, PVPLC, and public utilities in the third quarter:

December 14 – February 22: Rattlesnake Gate and Fence construction.

December 23- July: Burma Gate bollard construction resumed. Backorder of parts for the gate in addition to weather stalled the project.

August 19-22: Preserve temporarily closed due to significant rain associated with Hurricane Hilary.

July 26 – Ongoing: Fuel Modification Coordination with Public Works Department and PVPLC Preserve-wide for the second time this year due to significant regrowth.

Maintenance

The following is a list of maintenance projects and events that transpired during the Third Quarter. Maintenance work was performed by OSM Staff, and may include litter abatement, spur trail closures, signage repairs, and tread repairs, within the Preserve and Abalone Cove Park.

- Vegetation Trimming: 69
- Installing Signs: 3
- Removal of Graffiti (Additional graffiti deferred to GPC): 27
- General Maintenance: 127
- Total: 226

Additionally, effective August 30, the Open Space Management Division has begun implementation of CityWorks to track all maintenance work performed within the Preserve to effectively implement maintenance tasks and capture expenses, including labor and equipment.

OVERALL VISITOR CONTACTS:

Total Contacts: 5586

Hikers: 4,932

Dog Walkers: 338

Cyclists: 262

Equestrians: 54

Warnings: 77

Education: 771

Calls for Assistance: 11 Transports

Heat exhaustion & heat stress: 9

Other (i.e. underlying condition, sprained ankle): 2

Preserve Information and Reporting Hotline Calls: 42

Trail Status and General Information: 9

Parking Inquiry / Violation: 6

Electric Motorcycle / Bicycle: 8

Maintenance Issue Reported: 5

Wildlife Issues: 2

First Aid Response / Rescue: 2

Lost and Found: 2

Gate Unlocked / Condition: 2

Dumping: 2

Poaching / Digging: 1

Cutting: 1

Graffiti & Vandalism: 1

Homeless: 1

Social Media Educational Outreach

The City has reached out to Google Maps 4 instances to report a data problem on 3 trails within the Portuguese Bend Reserve and Abalone Cove Reserve. These suggestions are received by the Google Maps Team and reviewed for accuracy.

Additionally, the City is part of a Beta test in AllTrails as a land manager to provide suggestions for accuracy of information.

ENFORCEMENT SUMMARY:

Parking Citations Issued: 195

By Violation:

Park by Permit – 159
Posted Temporary No Parking / Fire Lane – 30
ADA Zone – 6
After Hours – 0
Other- 2

By Location:

Crenshaw Boulevard (Portuguese Bend / Filiorum adjacent) - 88
Del Cerro Park – 72
Abalone Cove Reserve – 29
Forrestal Reserve – 6
Other –

Notice to Appear Citations Issued: 5

By Violation:

Off Trail – 3
Filming without a Permit – 1
Motorized Vehicles - 1

By Location:

Portuguese Bend Reserve – 2
Abalone Cove Park / Reserve – 2
Vicente Bluffs Reserve - 1

ACTIVITY REPORT BY RESERVE:

The next section provides further information on projects, reports, and Ranger activity/observations organized by Reserve. Trail counter data is provided for Portuguese Bend Reserve, Filiorum Reserve and Forrestal Reserve, where the City has placed a total of five counters combined. It is important to note that trail counters are placed at the most popular entry points, but do not cover every entry point. Park Ranger public

contacts do not reflect actual number of individuals in the Reserve, rather those spoken to while on foot and/or vehicle patrols. Information does not include routine maintenance.

Abalone Cove Reserve

	Public Contacts	Education	Warnings	Enforcement
Hikers	807	122	18	2
Dog	20	2	1	0
Biker	4	1	1	0

On July 17-19, Olmsted Trail and Portuguese Point Loop Trail were temporarily closed while the Los Angeles County Fire Department began trail repairs and the installation of a secondary lifeguard tower on Abalone Cove Beach. Abalone Cove Beach remained opened to the public via Beach School Trail.



On July 15, Park Rangers found both trash cans at the 30-minute parking lots emptied, with trash strewn across the pathway. It is not believed to be animal related, as both lids were entirely removed. Park Rangers disposed of the liter.



On July 31, Abalone Cove Trail and the bottom section of Beach School Trail were temporarily closed to allow SCE to perform work on several power poles located in this area. Signage was placed at corresponding trailheads, and the public was advised that access to Abalone Cove Beach was still accessible via Sea Dahlia Trail or Olmsted Trail.



On August 1, Staff trimmed low-hanging branches from several Peppertrees above the picnic area.



On August 5, Staff was notified of a patron with an injury sustained while hiking up Abalone Cove Trail. The injured party was escorted out by first responders.

Cliffside Trail sustained some damage from the recent rain. The trail was briefly closed on August 25 to make repairs.



Before / after pictures of Cliffside Trail.

On August 26, Staff made repairs to Chapel View Trail due to rising berm in trail from land movement.



After picture showing smooth tread on Chapel View Trail.

On August 26, Staff trimmed back overgrown lemonade berry and made repairs to the tread of Beach School Trail.



Before / after pictures of Beach School Trail.

On August 28, Staff removed one instance of graffiti on an irrigation pipe.

On September 1, Staff constructed a small grade dip and filled a rut at the bottom of Sea Dahlia Trail near Altamira Canyon. This will aid in minimizing damage to the rock steps on the trail.



Before (left) and after (center and right) picture of the uppermost rock steps on Sea Dahlia Trail.

On September 2, Staff repaired erosion on the tread of Olmsted Trail.



Before picture of Olmsted Trail.

On September 5, Staff trimmed back overgrown lemonade berry brush along Beach School Trail.



Before and after trimming on Beach School Trail.

On September 5, Staff cleared debris obstructing regulatory signage on Sea Dahlia Trail.



On September 19, Staff identified a fissure that ran parallel to the Inspiration Point Loop Trail. The deepest section measured 4 feet in depth, with an estimated length of 25 feet along the trail. Staff consulted with the City's Geologist to assess impacts and determine recommendations for repairs.



Aqua Amarga Reserve

	Public Contacts	Education	Warnings	Enforcement
Hikers	0	0	0	0
Dog	0	0	0	0
Bicyclist	0	0	0	0

No issues observed during this reporting period.

Alta Vicente Reserve

	Public Contacts	Education	Warnings	Enforcement
Hikers	44	16	4	0
Dog	4	0	1	0

On July 14, Park Rangers received a report of overgrowth on the stairs at North Spur Trail. OSM Staff cleared dandelions which had partially blocked the stairs. No trail closures took place while trimming was conducted.



On July 19, Staff installed two no e-bike signs on Alta Vicente Trail and North Spur Trail. E-bikes and motorized vehicles are not permitted within the Preserve.



Filiorum Reserve

	Trail Counter	Public Contacts	Education	Warnings	Enforcement
Hikers	9,096	18	7	0	0
Dog	NA	2	0	0	0
Biker	864	0	0	0	0
Equestrian	NA	0	0	0	0

On August 29, a water leak near Gary's Gulch Trail and Vanderlip Trail was confirmed. This area had already been temporarily closed off to the public as repairs are needed to Vanderlip Trail prior to reopening. CalWater was notified of the incident.



Gary's Gulch Trailhead with water running down the trail.

On September 13, Park Rangers received a report of improper disposal of green waste and the creation of unauthorized trail near McBride Trail. Park Rangers are working with Code Enforcement to address this issue.



Forrestal Reserve

	Trail Counter	Public Contacts	Education	Warnings	Enforcement
Hikers	16,079	437	55	4	0
Dog	NA	65	6	0	0
Biker	206	27	10	3	0

On July 1, Park Rangers dug out and removed one exposed metal posts that was protruding on Mariposa Trail.



On August 5, the Los Angeles County Fire Department held a training on Forrestal Drive and on trails within the Reserve. There was a temporary closure of Forrestal Drive as helicopter units participated in the training. Park Rangers and City Staff were in the area to assist with the temporary closures.



On August 10, Staff dug out two concrete slabs with metal posts embedded on the trail bed. A third post was protruding from the trail bed but could not be dug out entirely. The exposed part was cut back and covered back up with dirt. Lastly, an exposed section of chain link fence was cut back and covered. All work was performed on the Mariposa Trail.

On August 16, a water main break occurred near Conqueror Trail. The break was reported in the early morning hours and was identified by 8 a.m. As a result of trail damage caused by the water main break, on August 18, Purple Sage Trail, Cactus Trail, Conqueror Trail, and Dauntless Trail were temporarily closed. Cal Water and contractors had several vehicles on the trails repairing damage to the canyon and repairing the pipe. The trails were reopened on August 29.





Three Trail Closed A-frames remain on Conqueror Trail.

On August 23, City Staff were notified of a fallen willow tree on Mariposa Trail. Staff was able to trim back part of the tree that was blocking access. On September 12, Park Rangers met with an arborist to determine the health and safety of the tree and coordinate next steps.

On September 13, Park Rangers reported several instances of graffiti on a stone wall, and signs on Forrester Drive. A report was submitted to GPC, the City's graffiti removal consultant.



On September 14, Park Rangers received a report of improper disposal of cut sections of pine tree on Mariposa Trail. The trail was temporarily closed while Staff investigated. There are at least 5 cut sections on the trail. Due to their size and weight, Park Rangers are unable to remove these from the trails, however, they were moved to the side to

ensure the trail remained passable. Staff will work with contractors to remove and properly dispose of these tree sections.



On September 19, Park Rangers repaired a grade dip on Klondike Canyon Trail.



On September 19, Park Rangers trimmed overgrown lemonade berry on the Sandbox Trail.



Ocean Trails Reserve

	Public Contacts	Education	Warnings	Enforcement
Hikers	274	2	0	0
Dog	14	5	4	0
Biker	0	0	0	0

Portuguese Bend Reserve

	Trail Counter	Public Contacts	Education	Warnings	Enforcement
Hikers	29,734	3,050	422	10	2
Dog	NA	225	44	16	0
Biker	1,971	230	41	12	0
Equestrian	0	54	16	0	0

On July 4, Park Rangers found and discarded a tire near Peppertree Trail.

On July 7, Park Rangers received a report of a fissure on Ishibashi Trail. Park Rangers inspected the trail and temporarily closed the Southern section of the trail. The trail was

repaired on September 9 with the assistance of PVPLC Volunteer Trail Crew. Staff assisted in staging piles of dirt to use to fill in the fissure and repair the tread.



Before, during, and after photos of Ishibashi Trail repair project.

Throughout the week, Park Rangers continued to identify and repair fissures emerging from land movement in the area. One such fissure, shown below, was found on Burma Road Trail. Cones are placed to advise the public, and vehicle access through the Southern section of the Reserve is limited.



On July 14, Park Rangers were notified of damage to the Panorama Trail and the Sandbox Trail as a result of a discharge from the fire hydrant at Barn Owl Trail the day before. Park Rangers repaired the Panorama Trail damage area without having to close the trail.



The Sandbox Trail was not closed. However, caution signage was placed along the 12-foot section of trail that was muddy to advise users to proceed with caution.



On July 20, several areas on Crenshaw Blvd were tagged with graffiti. GPC, the City's graffiti contractor, was contacted.



Park Rangers continued to monitor land movement in the trails in this area, including on Burma Road Trail. Where feasible, staff fills in fissures with rock and dirt. Additionally, signage has been placed to advise the public of these areas.



On July 22, Park Rangers identified a newly planted specimen near Burma Road Trail. The plant, believed to be scrub oak, was not authorized and was removed.



Over the weekend, Park Rangers assisted several patrons and their pets who were experiencing symptoms of heat exhaustion. With upcoming temperatures in the high seventies to low eighties with high humidity, the public is advised to stay hydrated and avoid hiking during the hottest parts of the day.

On July 30, Park Rangers observed a downed wire cable leading into Ishibashi Trail. Upon further investigation, Park Rangers confirmed that an unauthorized vehicle had driven into the trails and had gotten stuck. Park Rangers educated and escorted the driver and passenger out of the Reserve and issued a citation for a motorized vehicle in the Preserve.

Beginning August 1, Park Rangers coordinated and directed brush clearance of trails in the Portuguese Bend Reserve by landscaping crews. Trails prioritized for clearing included trails historically used as fire roads for vehicular access by public safety agencies and higher-use trails. Due to the proliferation of non-native vegetation caused by winter storms, trail clearing is a continuation from this spring. Approximately 4 miles of trails were cleared on the following trails:

- Paintbrush Trail
- Ishibashi Trail
- Peacock Flats Trail
- Ailor Trail

- Kubota Trail
- Eagle's Nest Trail
- Middle section of Rim Trail
- Zote's Cutacross Trail
- Peppertree Trail (partial)
- Vanderlip Trail (partial)
- Kelvin Canyon Trail (partial)
- Ford Trail (partial)

OSM staff continued to clear debris and inspect overgrowth along the trails.

On August 3, Staff trimmed a section of Gary's Gulch Trail adjacent to Vanderlip Trail. Two truckloads were hauled out. Before and after pictures are shown below.



On August 4, Staff trimmed a section of Landslide Scarp Trail to prune back the overgrowth of both natives and non-native vegetation on the trail. A truckload was hauled out. A picture depicting staff pruning lemonade berry bush is seen below.



On August 4, Staff reset a check dam on Barn Owl Trail that had been undercut.



On August 8, the Los Angeles County Fire Department held a training in the lower trails within the Reserve. No trail closures took place. The training took place from approximately 12 p.m. to 3 p.m.

On August 9, a contractor will begin work to repair the lower section of Peppertree Trail. This trail has been temporarily closed due to severe rutting caused during significant rain events from January to March 2023. The section of Peppertree Trail from Sandbox Trail to Ishibashi Farm Trail (upper junction) will remain temporarily closed as crews work to make repairs, including grading, backfilling ruts, and creating a rock-armored swale to improve drainage issues in the area.



On August 9, Staff repaired the tread on Burma Road Trail. This section continues to move due to land movement. Staff brought rock and dirt to fill in and compact the dirt to reduce the grade for vehicles.



Before / After repairs of Burma Road Trail

On August 14, a contractor completed work to repair the lower section of Peppertree Trail. This trail had been temporarily closed due to severe rutting caused during significant rain events over the course of January – March 2023. The section of Peppertree Trail from Sandbox Trail to the upper junction of Ishibashi Farm Trail is now open. Additionally, the pedestrian-only section of Ishibashi Farm Trail that had been temporarily closed is now open.



Before / After repairs of Peppertree Trail looking up toward Burma Road Trail



Before / After repairs of Peppertree Trail looking down toward Palos Verdes Drive South

Adjacent to the Reserve, this unnamed trail was also repaired by contractors on August 14 and is now reopened. The trail had also sustained damage due to severe rutting caused by significant rain events over the course of January – March 2023.

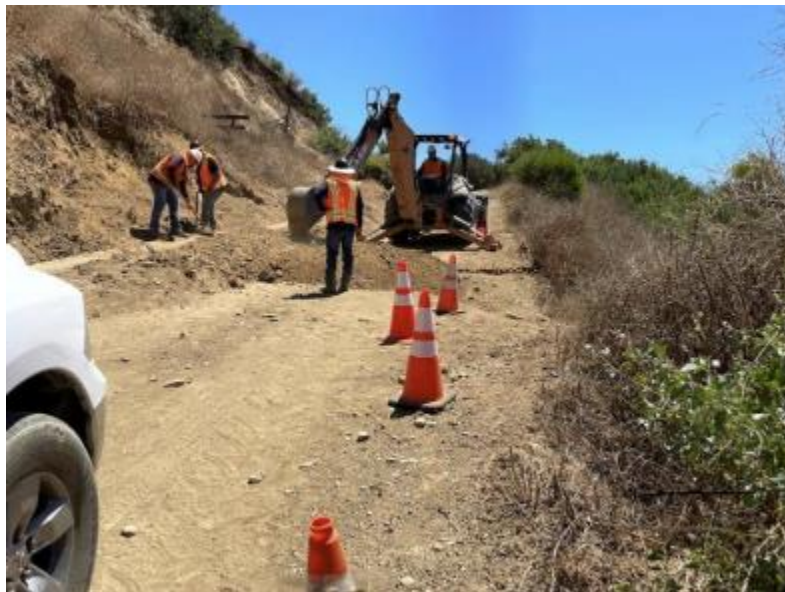


Before / After repairs of trail looking toward Ishibashi Farm Trail



Before / After repairs of trail looking toward Sandbox Trail

On August 18, Cal Water repaired a section of Burma Road Trail near Rim Trail junction to ensure maintenance of their existing infrastructure. No trail closures took place.



On August 18, a water leak was observed on Burma Road Trail near Ishibashi Trail. CalWater was notified and was able to make repairs to resolve the issue.



On August 21, a water leak was observed on Burma Road Trail near Rim Trail. CalWater was notified. However, due to trail conditions impacting vehicle access, repairs were not made the day of. Cal Water was able to complete repairs by August 23.



On August 21, Toyon trailhead (by Burma Road Trail junction) sustained some damage from the recent rain. Rock and dirt were used to make repairs to ensure the trailhead remained opened.

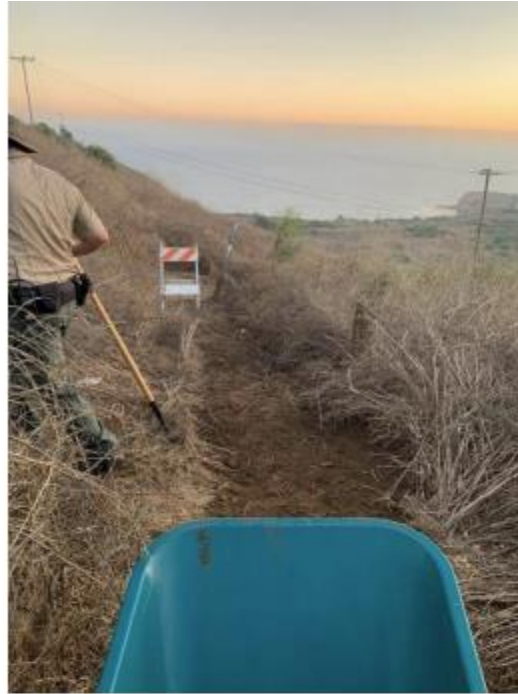


Before repairs of Toyon Trail and Burma Road Trail junction



After repairs of Toyon Trail and Burma Road Trail junction.

On August 21, Panorama Trail (by Burma Road Trail junction) sustained some damage from the recent rain. Rock and dirt were used to make repairs. During this time, the upper segment of the trail was temporarily closed between Burma Road Trail to Sandbox Trail. The trail was reopened on August 25.



Before / After repairs of two sections of Panorama Trail.

On August 24, Park Rangers resumed work on Eagle's Nest Trail to clear overgrowth trimmed back by contractors earlier in the month. The majority of the trimmings cleared were non-native mustard and tocalote.



Wheelbarrow seen filled with trimmings gathered on Eagle's Nest Trail.

On August 25, Staff began work on the upper section of Peppertree Trail to clear overgrowth trimmed back by contractors earlier in the month. Most trimmings cleared were non-native mustard and tocalote. Several piles were staged on the trail and were cleared within the week.



Staging area on Peppertree Trail.

On August 26, Park Rangers were notified of a bunny seen on Burma Road that appeared to have had internal injuries. The bunny was unable to move and shortly after had passed away. Cause of death was unknown.

Park Rangers continued to make repairs to fissures that open up along Burma Road Trail. One such instance is notable on the lower section of Rim Trail and Burma Road Trail. One of the holes was measured to be at least 6 feet deep. With the assistance of contractors, the section was repaired.



Before picture (left) was taken on August 25 with cones placed around the opened fissures compared to the picture after repairs (right) taken on August 28.

On August 27, Park Rangers observed an electric motorcycle riding on Burma Road Trail near Landslide Scarp Trail. Park Rangers were unable to make contact as the rider changed direction twice to evade Park Rangers. The individual was last seen on Burma Road Trail.

On August 27, Park Rangers found an Acacia tree that had fallen on Ishibashi Farm Trail. The tree was cut back and removed, allowing through access on the trail.



Before / after tree was cleared on Ishibashi Farm Trail.

On September 1, Park Rangers trimmed back overgrowth on the lower segment of Peppertree Trail.



Park Ranger is performing trimming on Peppertree Trail.

On September 4, Park Rangers placed cones to advise the public of land movement on Klondike Canyon Trail. Additionally, some areas were repaired.



Before and after picture of fissure located on Klondike Canyon Trail.

On September 5, Park Rangers were notified by the public of a water main break on Burma Road Trail. Rangers confirmed the leak was near Barn Owl Trail junction and temporarily closed a portion of Burma Road Trail, and Barn Owl Trail through September 7. CalWater was notified. The trail was reopened on the 8 after repairs were completed.



The water main break (left) and the damage on Burma Road Trail is depicted (right).



Before and after pictures of Burma Road Trail.

Park Rangers trimmed overgrowth along the Burma Road Trailhead on September 8.



On September 12, Park Rangers trimmed a fallen acacia tree that had blocked the trail. Vanderlip Trail continues to remain temporarily closed as trail repairs are still needed after damage from various water main breaks.



On September 16, Park Rangers received a report of a water main break on Vanderlip Trail. The trail remains closed until repairs can be made.



San Ramon Reserve

	Public Contacts	Education	Warnings	Enforcement
Hikers	2	2	1	0
Dog	0	0	0	0
Biker	0	0	0	0

On July 4, Park Rangers identified significant graffiti on the storm drain within San Ramon Reserve. The findings were reported to the City's contractor, GPC, for removal.



On August 15, Park Rangers observed damage to the Wanderer Trail gate. The damage had been caused by a vehicle accident in the early morning hours. The trail remains open to hikers and bicyclists only.



Three Sisters Reserve

	Public Contacts	Education	Warnings	Enforcement
Hikers	33	0	0	0
Dog	4	0	0	0
Biker	1	0	1	0

No issues observed during this reporting period.

Vicente Bluffs Reserve

	Public Contacts	Education	Warnings	Enforcement
Hikers	264	15	0	1
Dog	4	2	1	0
Biker	0	0	0	0

On July 12, Recreation and Parks Department and Public Works Department Staff placed several A-frames and water buffalo barriers to advise the public to use caution and stay on designated trails. There was damage to a 130-foot section of coastal blufftop fence installed along Golden Cove Trail. No trail closures are in effect, as the public sidewalk remains open as an alternative route.



On July 13, Park Rangers were notified of a wooden structure on Seascap Trail. The item was retrieved and discarded.



From August 14 – September 1, Sol Y Mar Community Association performed road maintenance including streets and crosswalks. The public trail providing through access between Indian Peak Road and Crestridge Road will be temporarily closed. Indian Peak Trail and Vista del Norte Trail remained opened. Advisory signage was placed to notify the public.



On September 16, Park Rangers found damage to the fencing along the Pelican Cove parking area. The issue was reported to Terranea Resort and caution tape was placed to alert the public.



Vista del Norte Reserve

	Public Contacts	Education	Warnings	Enforcement
Hikers	3	3	0	0
Dog	0	0	0	0
Biker	0	0	0	0

No contacts made or issues observed during this reporting period.

City Parks and Beaches

Rangers educated patrons in City Parks and beaches regarding the City's Municipal Code, including homeless individuals, unauthorized parking, and use of barbeque grills.