

2025 WILDFIRE SEASON
Assistant Fire Chief Kane
LACoFd



Palisades Fire

Currently 23,713 acres.

69% contained

6,051 structures destroyed

788 structures with damage

3123 firefighters working

10 fatalities- 10 persons missing

A large fire is burning at night, with bright orange and yellow flames rising into the dark sky. In the foreground, a dark, rectangular sign with the words "THE GETTY VILLA" in gold, serif capital letters is visible. To the left of the sign, there is a dark, textured wall or fence. The fire is located to the right of the sign, and its glow illuminates the surrounding area. The overall scene is one of a major fire at night, with the Getty Villa sign prominently displayed in the foreground.

THE
GETTY
VILLA

Eaton Fire

Currently 14,117 acres.

87% contained

9,418 structures destroyed

1069 structures damaged

2408 firefighters working

17 fatalities, 8 persons missing





NWS Fire Weather Products



Fire Weather Watch (Be Prepared)

What is it?

Conditions will become favorable for severe wildfire growth in the next 12 to 48 hours

Prepare:

- Clear brush around your property and avoid burning
- Plan escape routes

Red Flag Warning (Take Action)

What is it?

Issued when critical fire conditions are ongoing or expected to occur with the next 24 hours

Actions:

- Be extremely careful with open flames (including charcoal grills) and observe local burn bans

Critical Fire Weather Criteria

What is it?

A combination of weather and dry vegetation

10 hr fuel moisture:

$\leq 10\%$


Wind:

≥ 15 MPH

Relative Humidity:

$\leq 25\%$

Los Angeles County Fire Department

A night scene of a wildfire. The image is dominated by a bright orange and yellow glow from the fire. In the foreground, a dark road is visible with the word "HUMPS" painted in large, white, block letters. Several palm trees are silhouetted against the bright fire. In the background, a house is visible, partially obscured by the smoke and fire. The air is filled with a dense layer of smoke and falling embers, creating a hazy, chaotic atmosphere. The overall tone is one of danger and destruction.

Ember Cast can travel several miles out ahead of the fire front, wind gusts were recorded between 55 and 80mph.

"Wildfire "probability of ignition" refers to the statistical likelihood that a potential ignition source, like an ember lightning strike or a discarded cigarette, will start a wildfire in each set of environmental conditions, considering factors like fuel moisture, temperature, and wind speed; essentially, it's the chance that a spark will ignite available flammable vegetation and initiate a wildfire. Probabilities of ignition were calculated at over 90% the day the Palisades and Eaton fire erupted.



A major vulnerability to your home includes the vents in the eaves, attic vents, and raised foundation vents.

WHAT IS AN EMBER-RESISTANT VENT





READY! SET! GO!

YOUR WILDFIRE ACTION PLAN

<https://fire.lacounty.gov/rsg/>

LaCoFD Can provide home assessments for Brush
Clearance and Home Hardening

Modes of Operation

- Life Mode
- Property Conservation
- Perimeter Control
- Extinguishment
- Containment

Wildfire Terms

- Control- Fire is no longer advancing.
- Containment- Fire is surrounded by fire line
- Knockdown- no visible fire



Peninsula Staffing

- Staffing levels on the peninsula have remained constant.
- All 3 person engines have been augmented with 4 personnel
- 2 Fire Patrols staffed with 3 personnel
- 1 Water Tender has been staffed with 2 personnel.

Department Staffing

- The department is at drawdown
- We are working 2 shift model
- Reserve apparatus fleet staffed and back filling stations.
- 68 initial dim or dark stations
- Now only 8, nothing near the peninsula.



DWP relies on three 1-million-gallon water tanks for both domestic and emergency use. However, the demand on the system could not be sustained, causing the tanks to empty.

Cal Water also operates and maintains water tanks but does not rely on them to meet demand during peak periods. The Cal Water system is designed with built-in redundancy to ensure an adequate supply is available when needed.



DWP 117 Million Gallon reservoir out of service for the last year.





The Metropolitan Water District manages the Palos Verdes Reservoir. Currently it is out of service for repairs and upgrades to the second lower feeder. This is the pipeline that is used to fill the reservoir.

To ensure continued reliability for local communities a new bypass pipeline was installed to ensure uninterrupted and adequate water supplies will be delivered to all areas of the peninsula for both domestic and emergency use.

Cal Water and L.A. County Fire partnered to bring a HeloPod to the Peninsula. The HeloPod, which is positioned on the Rancho Palos Verdes coast, is an automatic-filling, high-capacity, helicopter dip tank that enables helicopters fighting wildfires to fill their water tanks four times faster and conduct more water drops per hour than if they had to land to refill.

We also coordinated with Cal Water to complete its 7-mile-long Palos Verdes Peninsula Water Reliability Project in 2020, which replaced an aging drinking water pipeline, added a second pipeline to enhance reliability, and constructed a new pump station on a separate electrical grid to help guard against prolonged outages.





Other steps Cal Water takes to help prepare for and harden its system against wildfires are:

- ***Installing generators at key facilities to keep water system infrastructure operating properly if power is lost or shut off***
- ***Positioning backup, portable generators where needed at other facilities.***
- ***Procuring lay-flat hoses to help move water between locations.***
- ***Inspecting and testing hydrants regularly.***
- ***Upgrading hydrants as part of its Infrastructure Improvement Planning process.***
- ***Creating defensible space around its facilities through vegetation management. Equipping its employees with portable extinguisher units called fire packs.***
- ***Assembling Operations Rapid Response Teams of employees.***

Evacuations

Genasys

Zonehaven Aware is now Genasys Protect. [Learn More](#)

genasys Protect
powered by ZONEHAVEN AWARE

< Back

Search

Fires

About

Download App

Zone
RHE-E012

27413 Indian Peak Rd, Palos Verdes Peninsula, CA,
90274, USA

Status
NORMAL

No current knowledge of active incidents in your area.

CRITICAL NOTIFICATIONS

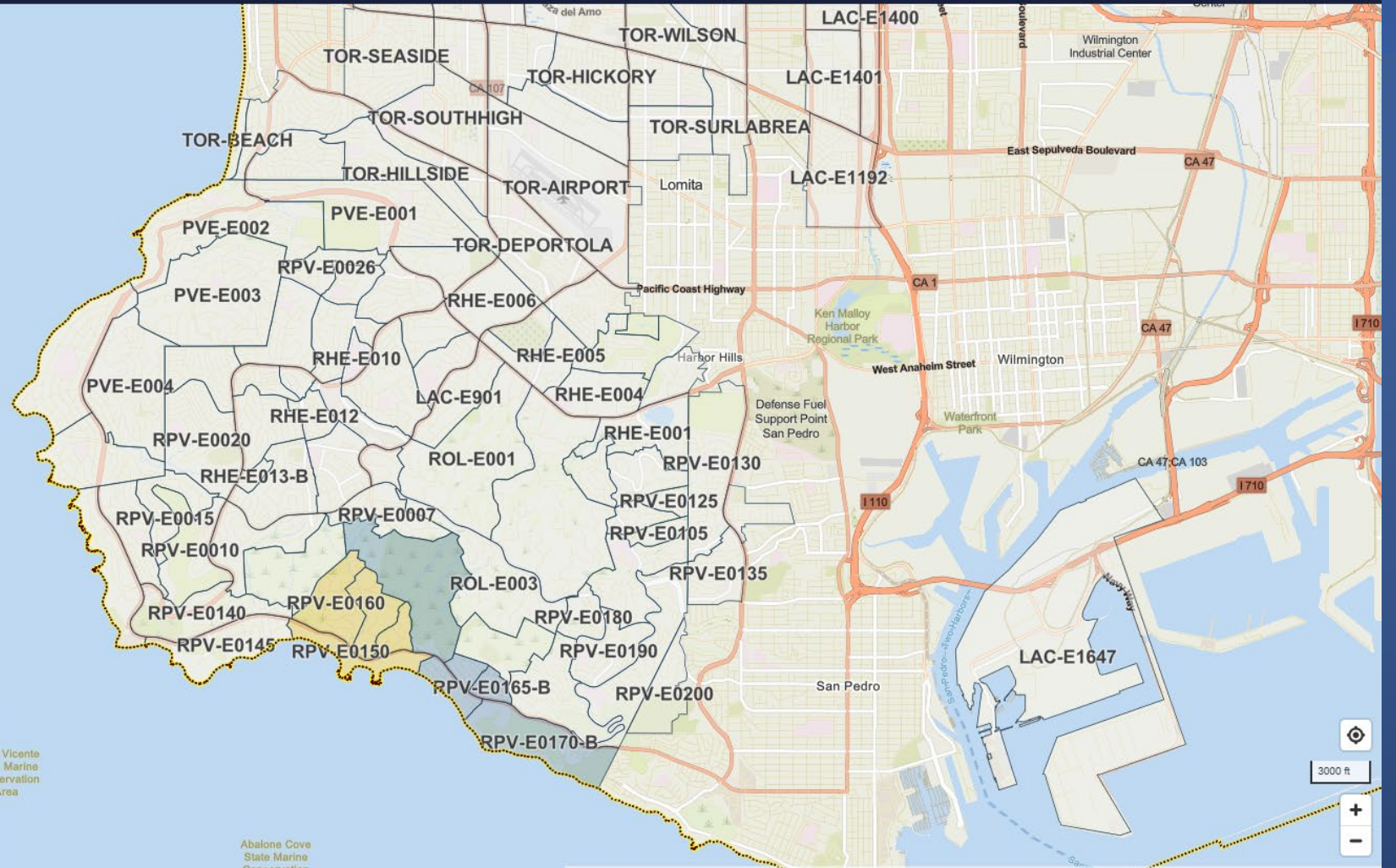
Never miss an alert, and receive critical notifications on the go with the Genasys Protect mobile app

Download app now

ZONE INFORMATION

NORTH OF Aspen Way
SOUTH OF Cottonwood Circle, Avocado Lane
EAST OF Via La Cima, Via Granada, Highridge Road
WEST OF Indian Peak Road, Aspen Way

62.38°F



Evacuations are sure to present a challenge. However, implementing systematic and early evacuations through Genasys will streamline the process and help maintain traffic flow on roads and exit routes.



A coordinated effort between the Fire Department,
Law Enforcement, and the public will be crucial for the
process to succeed.



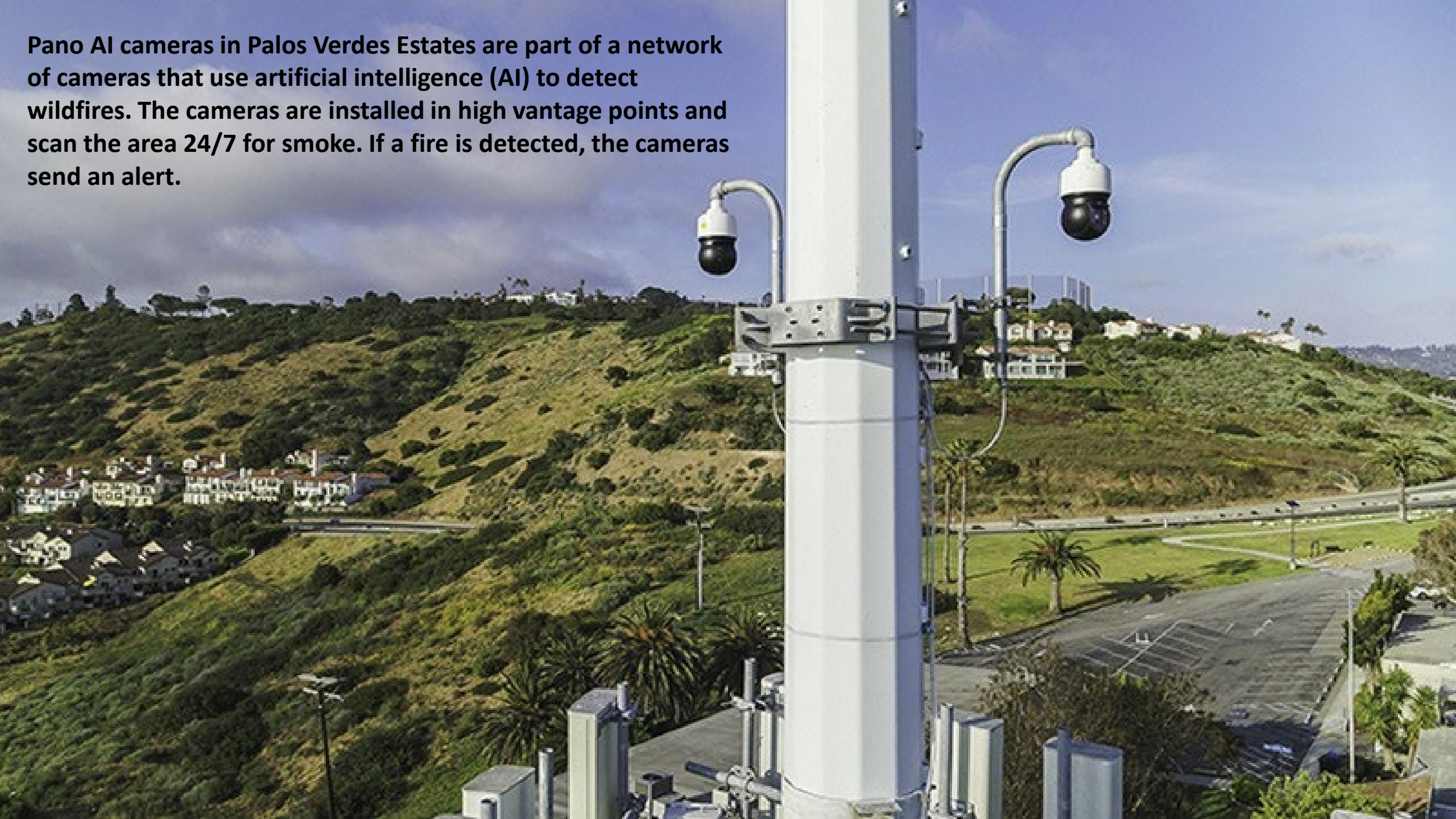
Evacuation routes will be determined by the incident. The location of the fire and its direction of spread will dictate which routes are safest, ensuring necessary traffic flow while allowing for the effective response of both fire and law enforcement



**Rancho Palos Verdes
Trail system will not
be used as
evacuation routes.**



Pano AI cameras in Palos Verdes Estates are part of a network of cameras that use artificial intelligence (AI) to detect wildfires. The cameras are installed in high vantage points and scan the area 24/7 for smoke. If a fire is detected, the cameras send an alert.



Questions?

LOS ANGELES
COUNTY



FIRE DEPT.