

RPV WILDFIRE PREPAREDNESS TOWNHALL

February 20, 2025
6:30-8:30pm

RPV Wildfire Preparedness Town Hall Agenda

February 20, 6:30-8:30 p.m.

McTaggart Hall, Hesse Park and livestreamed to YouTube @rpvchannel33



6:30 Introduction – Ara Mhuranian, RPV City Manager

6:40 Fire Readiness, Mitigation, and Response -- Chief Kane with LA County Fire

Learn more: <https://fire.lacounty.gov/>

7:00 Water Readiness -- Rupam S. (MWD), Matt V. (West Basin), Kimberly C. (Cal Water)

7:10 Electrical Grid Fire Prevention – Celina Luna with SCE

Learn more: www.sce.com/outage-center

7:20 City Fire Mitigation Efforts - Ramzi Awwad with RPV Public Works

7:30 Fire Evacuation Plans - Captain Guerrero with LA County Sheriff's Dept

Learn more: PVPReady.gov

7:45 Fire insurance - Rob Obedoza with CA Dept of Insurance

Learn more: www.insurance.ca.gov/

7:50 Presentation Wrap Up - Luna Mohammad, RPV Emergency Coordinator

Learn more: www.rpvca.gov/1395/Wildfire-Preparedness

7:55 Question & Answer Section

Select questions submitted prior to the townhall will be answered first, followed by an open call for questions.

After the town hall, the City will work to answer all submitted questions and will post them onto the RPV Website.





ASSISTANT CHIEF KANE LOS ANGELES COUNTY FIRE DEPT 2025

Modes of Operation

- Life Mode
- Property Conservation
- Perimeter Control
- Extinguishment
- Containment

Wildfire Terms

- Control- Fire is no longer advancing.
- Containment- Fire is surrounded by fire line
- Knockdown- no visible fire





NWS Fire Weather Products



Fire Weather Watch (Be Prepared)

What is it?

Conditions will become favorable for severe wildfire growth in the next 12 to 48 hours

Prepare:

- Clear brush around your property and avoid burning
- Plan escape routes

Red Flag Warning (Take Action)

What is it?

Issued when critical fire conditions are ongoing or expected to occur with the next 24 hours

Actions:

- Be extremely careful with open flames (including charcoal grills) and observe local burn bans

Critical Fire Weather Criteria

What is it?

A combination of weather and dry vegetation

10 hr fuel moisture:

$\leq 10\%$

Wind:

≥ 15 MPH


Relative Humidity:

$\leq 25\%$

Los Angeles County Fire Department

"Wildfire "probability of ignition" refers to the statistical likelihood that a potential ignition source, like an ember lightning strike or a discarded cigarette, will start a wildfire in each set of environmental conditions, considering factors like fuel moisture, temperature, and wind speed; essentially, it's the chance that a spark will ignite available flammable vegetation and initiate a wildfire. Probabilities of ignition were calculated at over 90% the day the Palisades and Eaton fire erupted.





Ember Cast can travel several miles out ahead of the fire front, wind gusts were recorded between 55 and 80mph.

Peninsula Staffing

- Staffing levels on the peninsula will remain constant.
- During Fire Weather events all 3 person engines will be augmented with 4 personnel
- 2 Fire Patrols will be staffed with 3 personnel
- 1 Water Tender has will be staffed with 2 personnel.



Home Hardening



ROOF

- USE EMBER-RESISTANT MATERIALS
- CLEAN OUT GUTTERS REGULARLY




WINDOWS

- INSTALL DUAL-PANED WINDOWS WITH THE EXTERIOR PANE MADE OF TEMPERED GLASS

RC 0637059 Low-E



IGU @ CBA IGUAC CIG-4.7 3-07

A photograph of a modern, two-story house with a light-colored stucco exterior and a wooden pergola structure over the balcony. The house features a wide staircase leading up to the entrance, surrounded by lush green plants and trees. The text is overlaid on the image, centered and in white capital letters.

WALLS
CONSIDER USING:
BRICK
CEMENT
MASONRY
STUCCO

DECKS & PATIOS

- USE HEAVY TIMBER OR NON-FLAMMABLE CONSTRUCTION MATERIAL
- ENCLOSE THE UNDERSIDE OF BALCONIES AND DECKS WITH FIRE-RESISTANT MATERIALS
- REMOVE FLAMMABLE ITEMS ON AND UNDER YOUR DECK

A major area of vulnerability to your home are, the vents
in the eaves, attic vents, and raised foundation vents

WHAT IS AN EMBER-RESISTANT VENT



VENTS

A blue metal vent cover with vertical slats is mounted on a wall. The vent is rectangular and has a horizontal bar across the top. The background is a light-colored wall with some texture.

- COVER VENTS WITH 1/8 INCH METAL MESH

- USE BAFFLES TO BLOCK EMBERS &
PROTECT VENTS IN EAVES OR CORNICES



VENTS

- COVER VENTS WITH 1/8 INCH METAL MESH

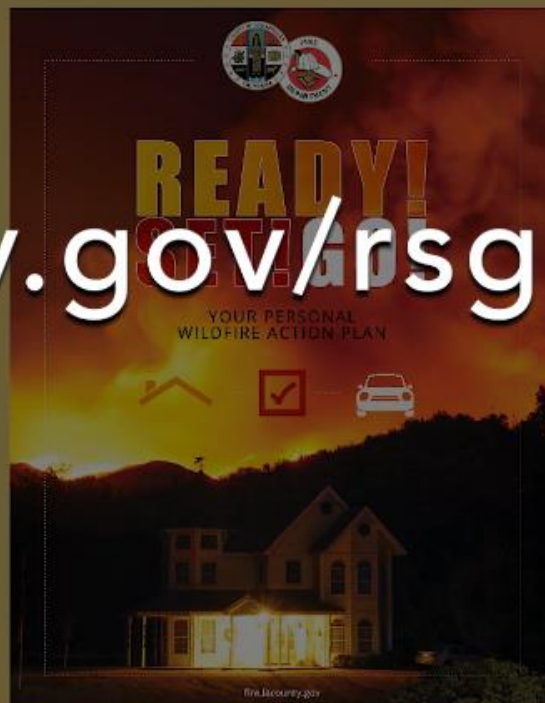
Resources

- Ready! Set! Go!
- Ready! Set! Go! in Spanish
(Coming Soon!)
- A Guide to Consistent Care
- Pool Modification Guidelines
- Brush Clearance Inspections

Contact Information

- (323) 881-2411
- @LACoFD
- @LACoFDPIO

fire.lacounty.gov/rsg





READY! SET! GO!

YOUR WILDFIRE ACTION PLAN

<https://fire.lacounty.gov/rsg/>

LACoFD Can provide home assessments for Brush
Clearance and Home Hardening

Water

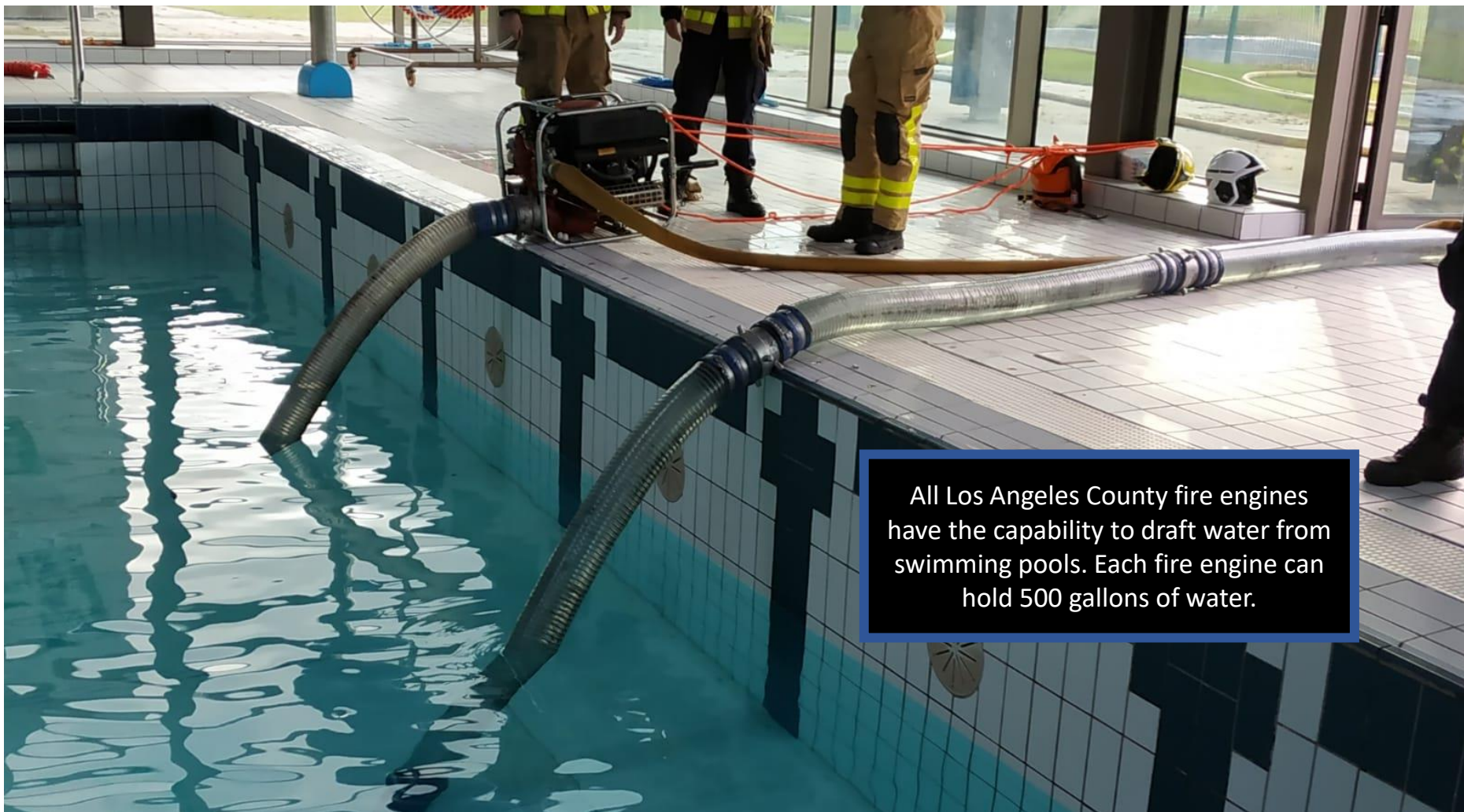


Los Angeles County Fire Department during fire season
has 2 Canadian Super Scoopers on contract with the
capability of
1600 Gallons of Water Per Drop



**HeloPod
Helispot 53A
30940 Hawthorne Blvd RPV**





All Los Angeles County fire engines have the capability to draft water from swimming pools. Each fire engine can hold 500 gallons of water.



Every year in the month of March, ALL fire hydrants in the city are exercised to ensure the hydrant is functioning properly or if any further maintenance or repairs is needed.

Evacuations

Genasys

Zonehaven Aware is now Genasys Protect. [Learn More](#)

genasys Protect
ZONEHAVEN AWARE

Search

Fires

About

Download App

< Back

Zone
RHE-E012

27413 Indian Peak Rd, Palos Verdes Peninsula, CA,
90274, USA

✓

Status
NORMAL

No current knowledge of active incidents in your area.

🔔

CRITICAL NOTIFICATIONS

Never miss an alert, and receive critical notifications on the go with the Genasys Protect mobile app

Download app now

ZONE INFORMATION

NORTH OF Aspen Way

SOUTH OF Cottonwood Circle, Avocado Lane

EAST OF Via La Cima, Via Granada, Highridge Road

WEST OF Indian Peak Road, Aspen Way

☀️

62.38°F

Evacuations are sure to present a challenge. However, implementing systematic and early evacuations through Genasys will streamline the process and help maintain traffic flow on roads and exit routes.



A coordinated effort between the Fire Department,
Law Enforcement, and the public will be crucial for the
process to succeed.



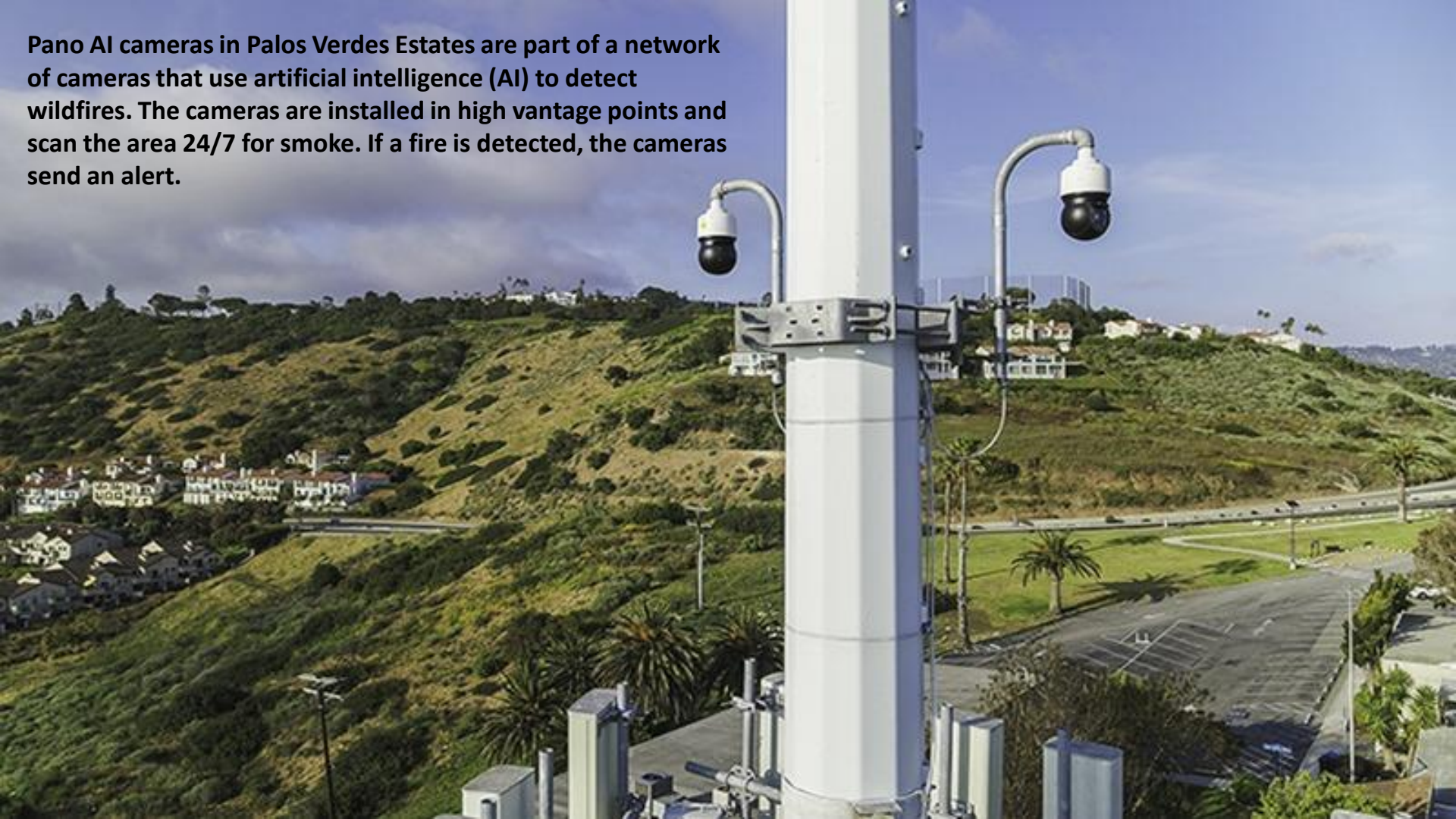
Evacuation routes will be determined by the incident. The location of the fire and its direction of spread will dictate which routes are safest, ensuring necessary traffic flow while allowing for the effective response of both fire and law enforcement



**Rancho Palos Verdes
Trail system will not
be used as
evacuation routes.**



Pano AI cameras in Palos Verdes Estates are part of a network of cameras that use artificial intelligence (AI) to detect wildfires. The cameras are installed in high vantage points and scan the area 24/7 for smoke. If a fire is detected, the cameras send an alert.



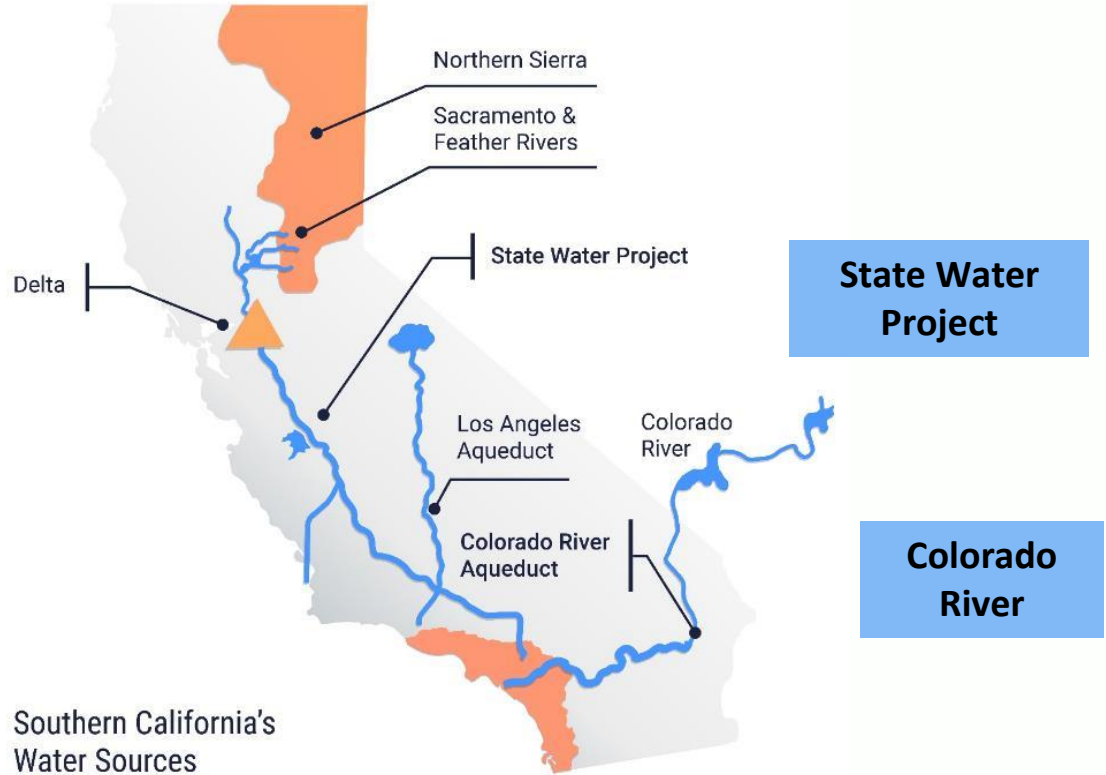


Metropolitan Water District of Southern California

City of Rancho Palos Verdes Townhall
February 20, 2025

Securing Water for Southern California

- Nation's largest wholesale water provider; delivers water to 26 member agencies
- Service area: 19 million people, 5,200 square miles, parts of six counties



Your Regional Water Suppliers



Customers

Southern CA Wholesaler
19 million residents;
provides water to West
Basin

Regional Wholesaler
1 million residents;
provides water to Cal
Water

Retail Water Provider
Serves PV Peninsula
Residents

Positioned to Meet Water Demands

Record-high Storage

Metropolitan is starting 2025 with a record 1.24 trillion gallons of water in storage.

- Metropolitan's Diamond Valley Lake, the Southland's largest reservoir, is at 97% capacity.
- The district is well-positioned to meet our water demands this year.



Diamond Valley Lake, January 2025



Metropolitan's
Regional Pipelines
Serving the
Palos Verdes Area



Metropolitan Overview

Palos Verdes Reservoir

- Treated water reservoir built in 1939
- Designed for regulating flows and not for storage
- Covered to protect water quality and comply with regulatory requirements
- Not accessible for firefighting by helicopters
- Currently out of service



Second Lower Feeder

Palos Verdes Feeder

PV Reservoir Primary Inlet

PV Reservoir 2nd Inlet

Temporary Bypass Line
(used during current Second Lower Feeder shutdown)

Service connectionn

Oak Street PCS

WB-005 PV-2 PV-2

LA-05

LA-21A

WB-1

Service
connectionn

Metropolitan provided local assistance for the January 2025 Southern California fires

Metropolitan Overview

Responding to Natural Disasters

With a focus on
collaboration and
continued support to
impacted water agencies



West Basin Firescaping Workshops



- Identify high-risk landscapes
- Recommended plants and building materials to help minimize damage
- Tips for reducing fire risk
- Make homes firefighter-accessible

www.westbasin.org/firescaping

Metropolitan Overview

For More
Information

Rupam Soni

Manager, Member Services and Public Outreach

rsoni@mwdh2o.com

(213) 217-7262

Visit: mwdh2o.com

Our Regional Water Distribution System





California Water Service

February 20, 2025

Quality. Service. Value.®

Rancho Dominguez District Overview

Ralph Felix, District Manager

Agustin Baeza, Operations Manager

Carmelo Sorce, Chief Engineering Officer

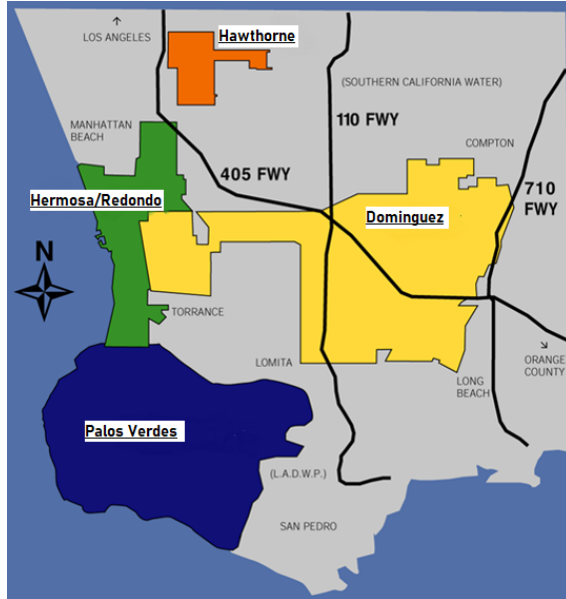
Kimberly Caballero, Regional Public Affairs Program Manager

California Water Service (Cal Water)



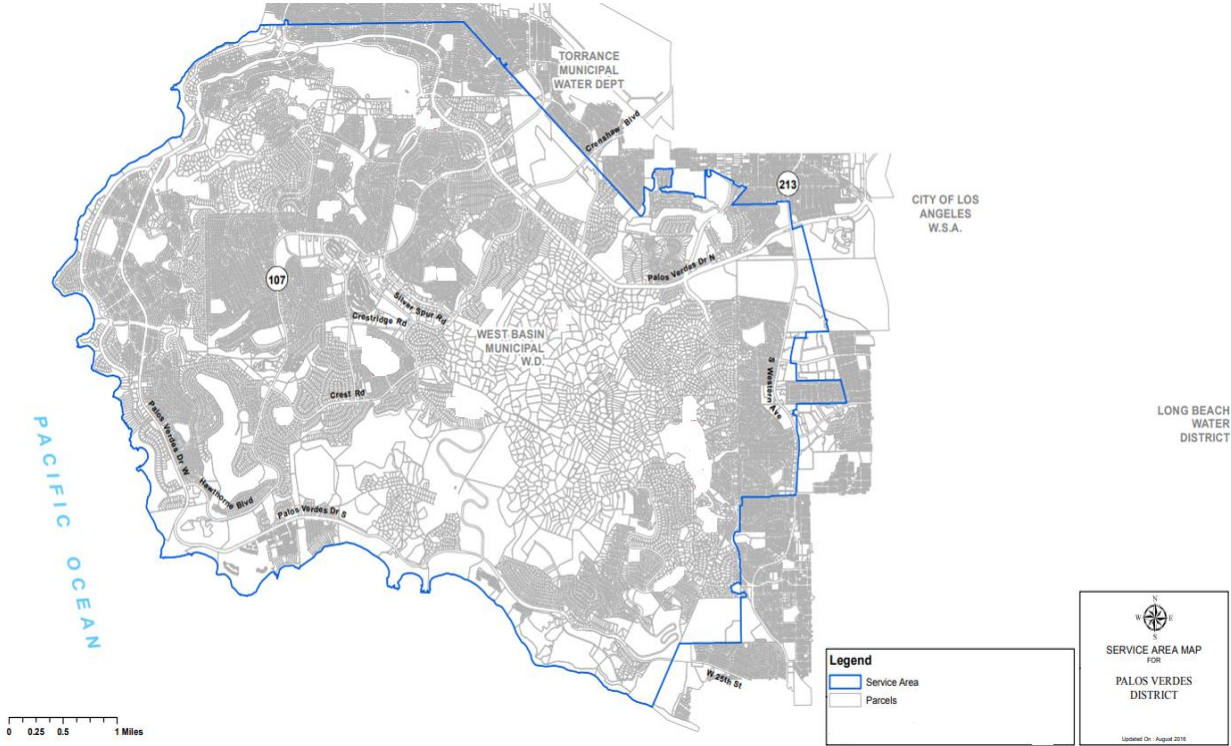
- Established in 1926
- Largest water utility regulated by California Public Utilities Commission (CPUC)
- Third-largest publicly-traded regulated water utility in U.S.
- Serves 2 million Californians through almost 500,000 service connections
- 22 districts across state

Rancho Dominguez Overview



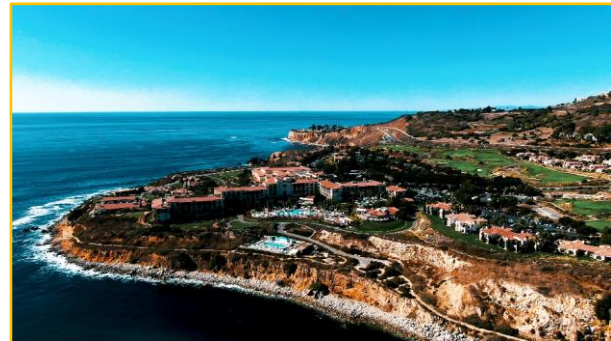
- Roughly 910 combined miles of water main
- 47 storage tanks
- 19 booster pump stations
- Over 93,000 service connections
- 99 employees

Palos Verdes Service Area



Palos Verdes Service Area

- Cal Water serves the four PV cities and Rolling Ranchos neighborhood in Lomita
- 24,059 service connections and 105 pressure zones
 - 16.1 million gallons average day demand
 - 341 miles of main
 - 605 control valves
 - 2,567 fire hydrants
 - 18 storage tanks with total of 30.7 million gallons of storage
- Purchased water is only supply
 - 4 Metropolitan Water District / West Basin connections
- Notable projects:
 - PVP Water Reliability Project
 - Main replacement program
 - Wildfire hardening



Source of Supply

- 100% of water purchased from Metropolitan Water District of Southern California via West Basin Municipal Water District
- Water is pumped to highest point on peninsula (1,457 feet) and delivered to customers



Fire Hydrants

- Cal Water's hydrant maintenance standard operating procedure involves two major components:
 1. Annual visual inspection of all hydrants
 2. Comprehensive maintenance every five years
- Water distribution network is closed loop system, which means that our potable/domestic water supply is same water that supplies our fire hydrants



Infrastructure Improvements

- Main replacement program
- Wildfire hardening projects
- Installation of generators
- These projects improve:
 - Grid resiliency in system
 - Water quality
 - Fire flow capacity





Approximately **seven miles** of **new water pipeline**

NEW PUMP STATION added on a separate electric grid



Palos Verdes Station 53



HeloPod

- Automatic-filling, high-capacity, helicopter dip tank
- Enables helicopters fighting wildfires to fill their water tanks about 4x faster and conduct more water drops per hour than if they had to land to refill
- Commissioned in 2023
- Positioned on Rancho Palos Verdes coast
- Made possible thanks to Cal Water's partnership with City of Rancho Palos Verdes and L.A. County Fire



Emergency Response

- Emergency Operations Center – annual training
 - With community leaders and stakeholders
 - Emergency response overview training
 - Emergency Operations Center exercise
- Operations Rapid Response Team
- Emergency equipment
 - Portable boosters
 - Portable generators
 - Fire packs

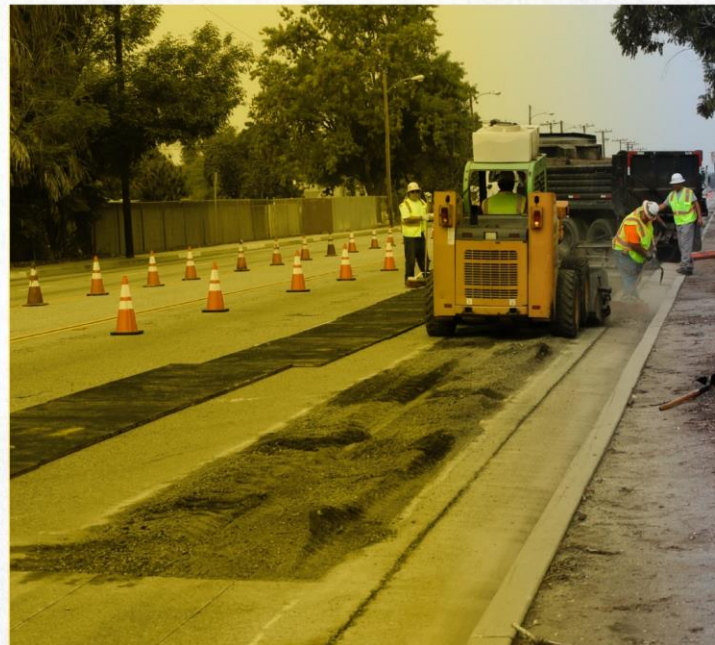


For More Information

- Visit www.calwater.com/conservation/be-water-wise-and-fire-wise for guidance on:
 - Fire-resistant landscape and plants
 - Preparing a defensible space
- Contact Kimberly Caballero, Regional Public Affairs Program Manager at: **kcaballero@calwater.com**

OUR COMMITMENT TO CALIFORNIA

KEEPING OUR COMMUNITIES SAFE FROM WILDFIRES



SCE SERVICE AREA & HIGH FIRE RISK AREAS



50,000 SQ. MI.
of SCE service area
across southern,
central and coastal
California



5M
customer accounts
or 15M residents in
SCE's service area



14,000 SQ. MI.
of high fire risk areas

51,000 MI.
of SCE overhead
distribution and
transmission lines

14,000 MI.
in high fire risk areas



1.3M
customer accounts
or 3.9M residents
served by circuits in
high fire risk areas

1.4M
power poles and
towers

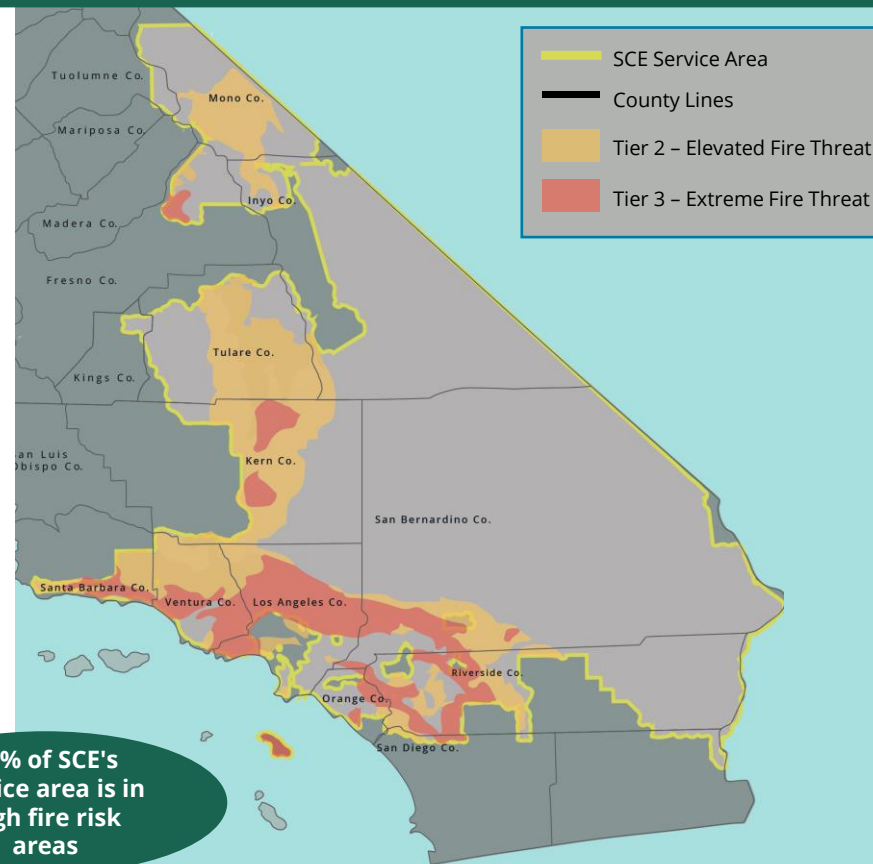
311,000
in high fire risk areas

**Counties with
high fire risk
area served by
SCE**

Fresno
Inyo
Kern
Los Angeles
Mono
Orange
Riverside
San Bernardino
Santa Barbara
Tulare
Ventura

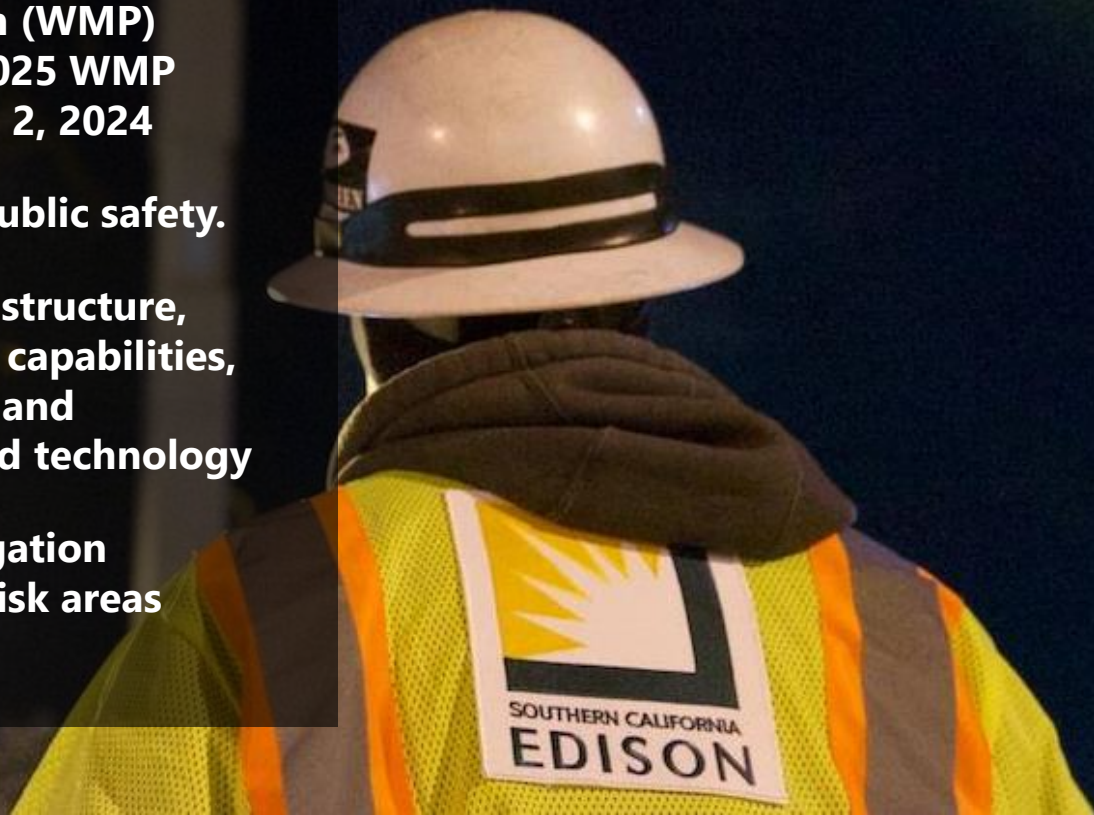
**Counties with no
or limited high
fire risk areas
served by SCE**

Imperial
Kings
Madera
Tuolumne

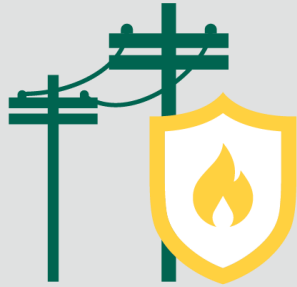


OUR WILDFIRE MITIGATION PLAN

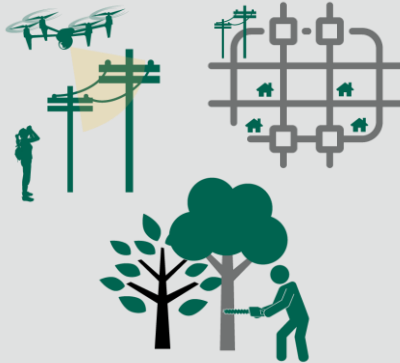
- **2023-25 Wildfire Mitigation Plan (WMP) submitted on March 27, 2023. 2025 WMP Update to be submitted on April 2, 2024**
- **Primary objective is to protect public safety.**
- **SCE is further hardening its infrastructure, bolstering situational awareness capabilities, enhancing operational practices and harnessing the power of data and technology**
- **SCE incorporates advanced mitigation measures deployed in high fire risk areas around the world**



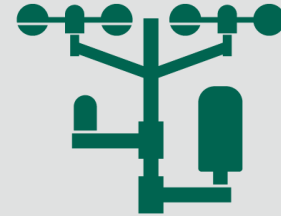
A COMPREHENSIVE STRATEGY TO PREVENT, COMBAT AND RESPOND



**HARDENING
THE ELECTRIC
GRID**



**ENHANCING
OPERATIONAL
PRACTICES**

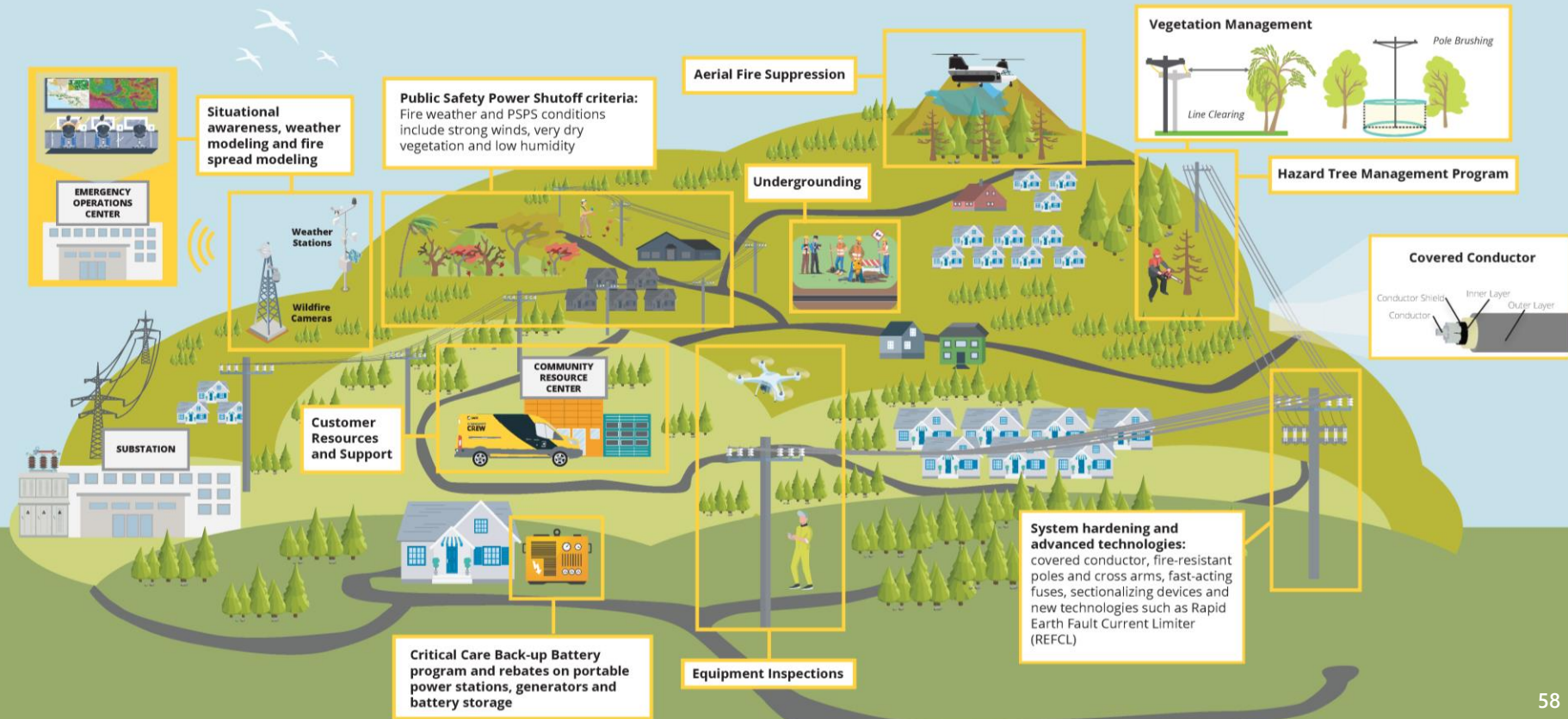


**BOLSTERING
SITUATIONAL
AWARENESS
CAPABILITIES**

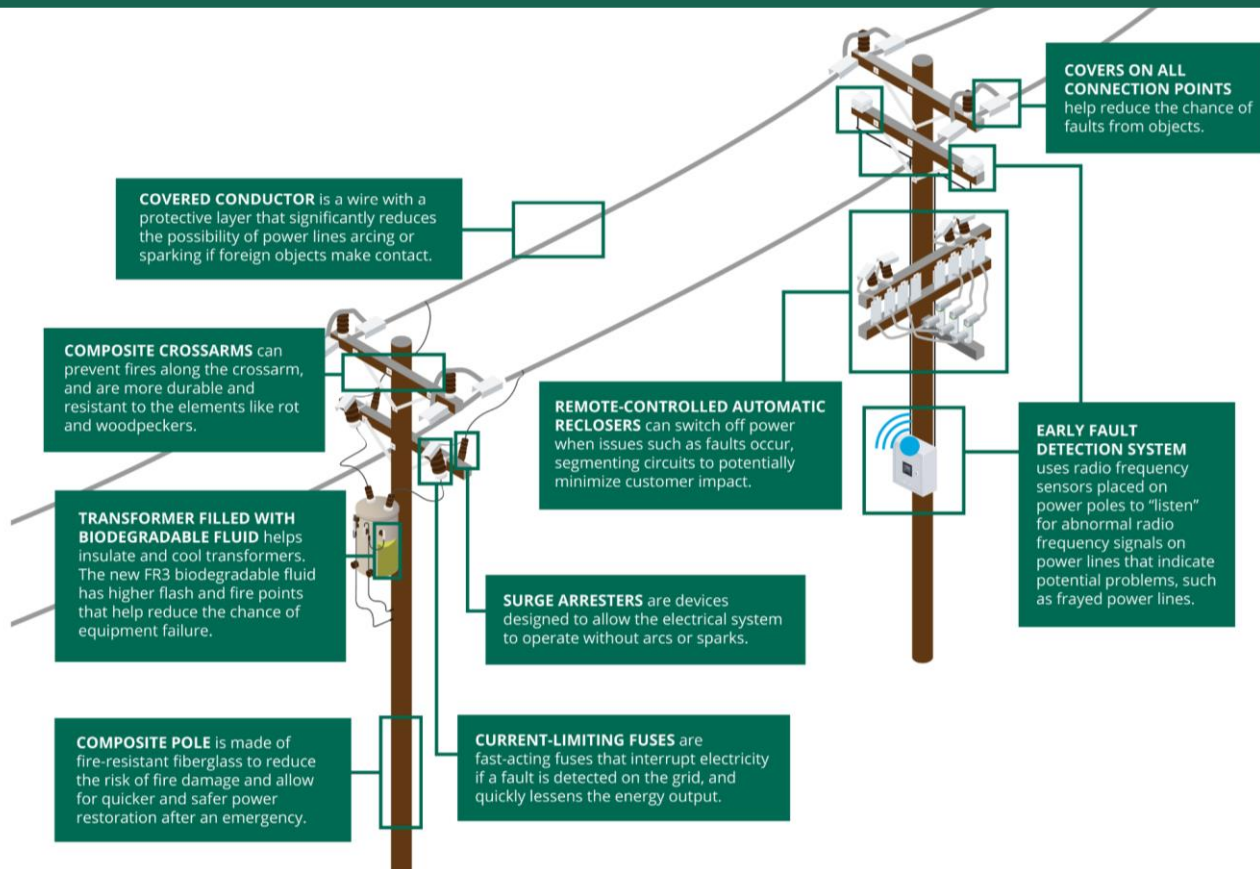
MAINTAINING FOUNDATIONAL STRATEGY WHILE ADVANCING KEY INCREMENTAL FOCUS AREAS EACH YEAR

2019	2020 - 2022	2023-2025
FOUNDATIONAL STRATEGY	GRANULAR WILDFIRE RISK, PSPS MITIGATION	INTEGRATED WILDFIRE MITIGATION STRATEGY
<p>Hardening the electric grid</p> <p>Enhancing operational practices</p> <p>Bolstering situational awareness capabilities</p>	<p>Refined risk analysis models</p> <p>Enhanced inspection strategy</p> <p>Reduced PSPS impacts</p> <p>Funded aerial fire suppression</p> <p>Piloted new technologies</p>	<p>Continue risk-informed grid hardening and mitigations</p> <p>Advance transmission hardening</p> <p>Continue reducing PSPS impacts</p> <p>Further advance new technologies</p>

REDUCING WILDFIRE RISK IN OUR COMMUNITIES



ANATOMY OF A POLE – HARDENING THE GRID



REDUCING WILDFIRE RISK & PSPS IMPACTS – BY THE NUMBERS

SCE has reduced the probability of catastrophic¹ wildfires associated with its equipment by about **85-88%** since 2018

~5,600 MILES
OF COVERED CONDUCTOR



2 MILLION+
TRIMS AND REMOVALS



1 MILLION+
HFRA INSPECTIONS



1,730+ WEATHER STATIONS
190+ HD CAMERAS



Completed in high fire risk areas since 2018



IMPROVED PSPS EXECUTION & CUSTOMER SUPPORT

- **92%** less PSPS outage time in 2023 compared to 2020²
- **63** Community Resource Centers and **8** Community Crew Vehicles available
- Deployed **14,300+** Critical Care Back-up batteries to Medical Baseline customers

1. A wildfire directly causing one or more deaths, damaging or destroying more than 500 structures, or burning more than 140,000 acres of land
2. ~22M customer minutes of interruption in 2023 compared to ~268M in 2020, not normalized for weather

OUR WILDFIRE MITIGATION PLAN



Grid Hardening

Improving the electrical system to make the grid more resilient in high fire risk areas, improving reliability and reducing wildfire risk



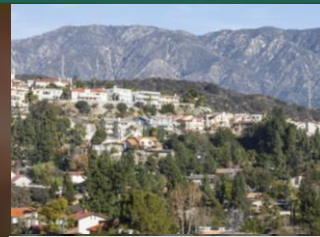
High Fire Risk Inspections

Annually inspect equipment in high fire risk areas for any needed maintenance, repair or replacement, prioritizing the highest-risk structures



Vegetation Management

Annually inspect, trim and remove trees to prevent vegetation from coming into contact with electrical equipment and potentially sparking a fire



Public Safety Power Shutoffs

Tool of last resort to protect our communities from the threat of wildfire, where we temporarily shut off power to prevent our electric system from becoming the source of an ignition



Situational Awareness

Using a dense network of weather stations and wildfire cameras to monitor location-specific, real-time conditions that help inform operational decision-making

ENHANCING OPERATIONAL PRACTICES



HIGH FIRE RISK INSPECTIONS & REMEDIATIONS

Inspect overhead equipment in high fire risk areas for repairs from the ground and aerially using drones, prioritizing the highest-risk structures. In 2023, inspecting portions of transmission and distribution equipment that comprise about 99% of wildfire risk.



VEGETATION MANAGEMENT

Inspect, trim and remove trees to prevent vegetation from coming into contact with electrical equipment and potentially sparking a fire. Tall trees beyond standard pruning zones that could potentially fall into power lines are also assessed and pruned or removed. SCE also removes palm trees that may come in contact with power lines.



PUBLIC SAFETY POWER SHUTOFFS

Use PSPS as a tool of last resort to mitigate wildfire risk during elevated fire weather conditions, such as strong winds and dry fuels, by shutting off lines to prevent a spark from our equipment starting a significant wildfire.

PSPS COMMUNICATIONS

Notifications

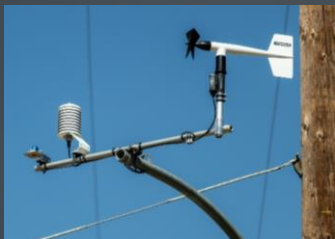
- SCE provides PSPS notifications through various communication channels
 - SCE Account Holders (email, text, and voice call)
 - Address Level Alerts
- You can manage your outage notifications and ensure your information is current in the customer preference center.

SCE Outage Map

- Consolidated outage map that incorporates PSPS outages at sce.com/outagemap

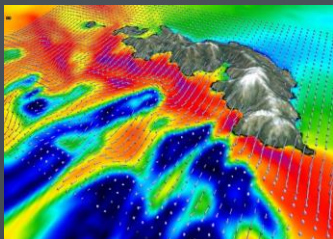
The screenshot displays the 'Power Outages' section of the SCE website. It features a search bar at the top with the placeholder text 'Search by address, city, county or ZIP'. Below the search bar is a link: 'Click here to enter the outage number and check the status'. The main content area is divided into four sections: 'Current Outages' (28 Outages | 1,065 Customers Impacted), 'Upcoming Scheduled Outages' (1,531 Outages Scheduled | 68,293 Customers Possibly Impacted), 'Public Safety Power Shutoff (PSPS)' (Search for an address to see specific PSPS details or see county-level details below), and 'Not Seeing Your Outage?' (Last Updated: 5/2/2022 - 6:02 PM PST). A 'Report' button is located next to the 'Not Seeing Your Outage?' section. Below these sections is the 'Outage Alerts' section, which includes the text 'Stay informed about unplanned repair and planned maintenance outages.' and a 'Get Alerts >' button. At the bottom, there is a 'Community Support' section with three icons: 'Resource Centers', 'Crew Vehicles', and 'Further Assistance'. A note states: 'SCE Community Resource Centers are available to support customers during a Public Safety Power Shutoffs... More >'. On the right side of the page is a map of Southern California showing various locations with yellow warning icons, indicating power outages or PSPS areas. The map includes labels for cities like Lancaster, Palmdale, Santa Clarita, Simi Valley, Thousand Oaks, Los Angeles, West Covina, Ontario, Corona, Redondo Beach, Huntington Beach, Lake Forest, Laguna Niguel, and San Clemente. Highway shields for 39, 57, 85, 103, 21, and 72 are also visible.

BOLSTERING SITUATIONAL AWARENESS CAPABILITIES



Weather Stations

1,730+ weather stations provide wind speed, humidity and temperature data. Expanding artificial intelligence and machine learning capabilities for improved forecasting



Weather Modeling

Continuing to improve weather modeling and incorporating machine learning capabilities to weather stations to enhance weather forecasts



Fuel Sampling

14 fuel sampling sites measuring vegetation moisture on a biweekly basis to help determine dry fuel conditions. Using data to train fuel moisture model to enhance operations



Wildfire Cameras

190+ cameras that provide thorough visibility in high fire risk areas to monitor wildfire conditions. Equipping cameras with artificial intelligence capabilities to detect wildfires

Website: sce.com/wildfire
Energized by Edison Stories & Videos: edison.com/wildfire-safety

SCE Customer Support: [1-800-655-4555](tel:1-800-655-4555)

STAY INFORMED



- Visit our website
- Attend a community meeting

SIGN UP & UPDATE CONTACT



- Outage alerts
- SCE's Medical Baseline program
- SCE programs and rebates

BE PREPARED

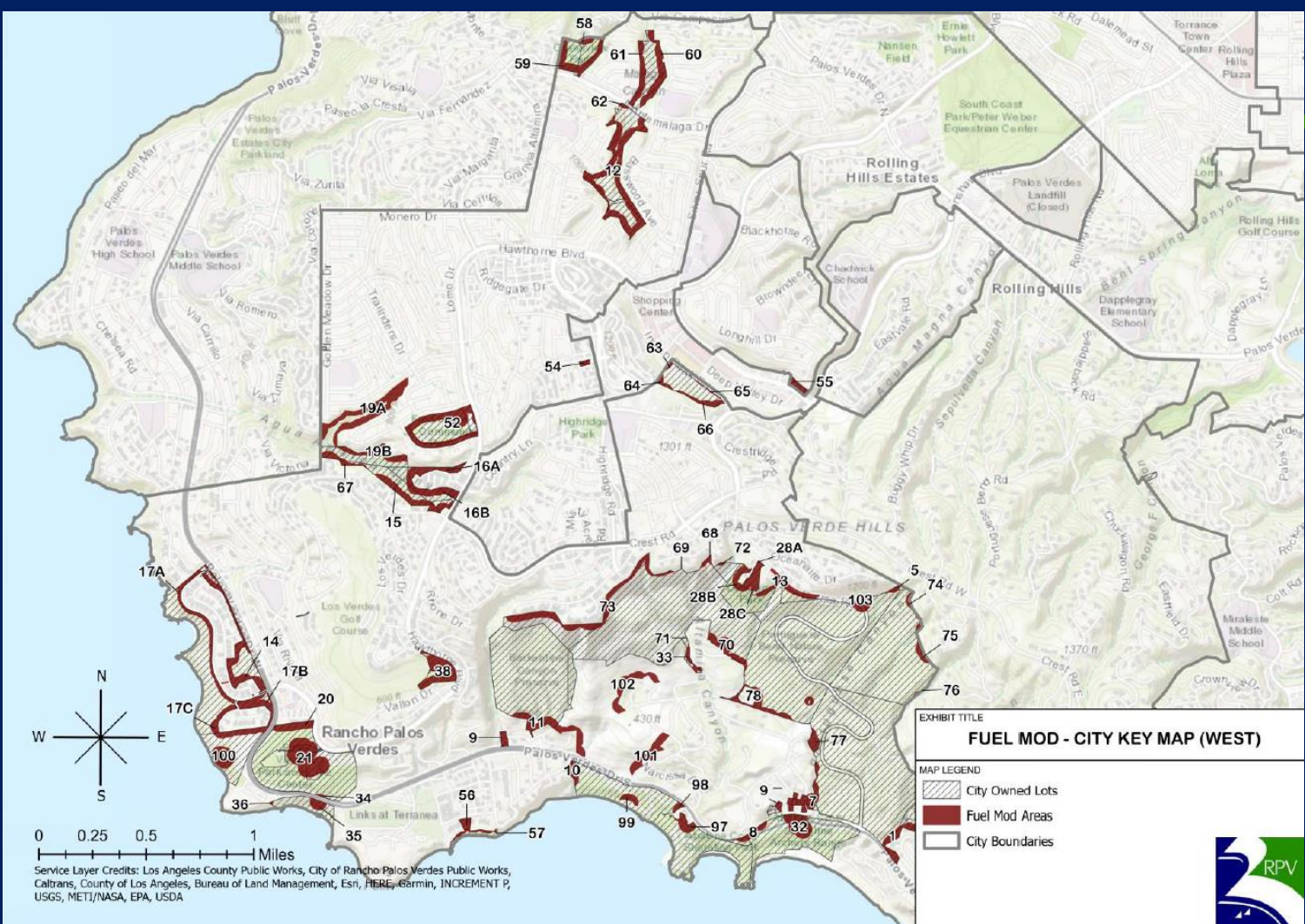


- Be prepared with a safety preparedness plan, some basic supplies and advance planning
- Power outage tips



Fuel Modification

- Annual Program on City Parcels
 - Goat Grazing
 - Hand Operated Machinery
- Based on Fire Department Guidance
 - Within 200' of Structures
 - 10' Along Roadways
 - Removal of Dead Vegetation
 - Thinning and Uplimbing of Shrubs/Trees
- Maintaining Soil Stability to Prevent Erosion







Los Angeles County Sheriff's Department

WILDFIRE PREPAREDNESS

**LAW ENFORCEMENT
RESPONSE**

OVERVIEW:

Fire incidents are dynamic and rapidly evolving. The unique circumstances of an incident will ultimately determine what unique actions we take and what routes we utilize to evacuate our community.



GENERAL OBJECTIVES:

To assist the Los Angeles County Fire Department with area evacuations, maintain public safety during a critical incident, and protect property within an evacuation zone.

PROCEDURES:

- Door to door notifications in affected areas.
- Public Address (PA) announcements via deputy patrol vehicles
- Traffic control of ingress/egress into evacuation zones.
- Looter suppression post evacuation



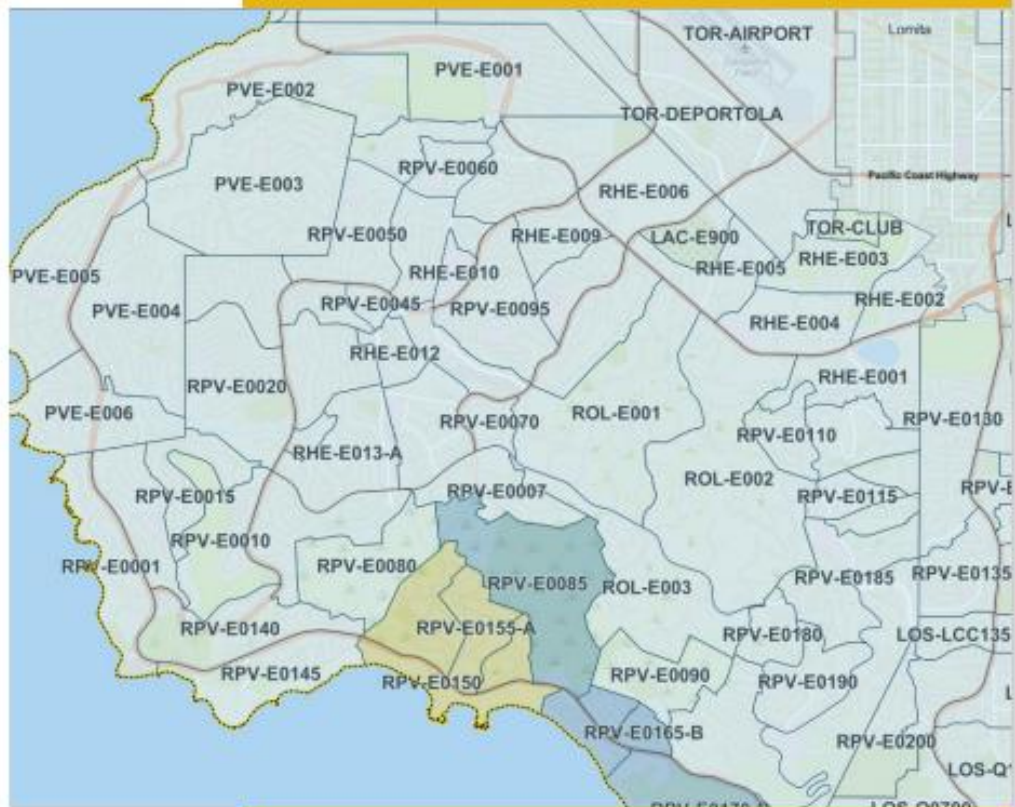
Los Angeles County Sheriff's Department

GENERAL OBJECTIVES:

To assist the Los Angeles County Fire Department with area evacuations, maintain public safety during a critical incident, and protect property within an evacuation zone.

RESOURCES:

- LASD mutual aid- patrol stations, SRT, EOB, etc.
- Genasys EVAC
- Los Angeles OEM support



GENASYS EVAC:

Zone based evacuation mapping that facilitates a coordinated evacuation effort between law enforcement and the fire department.

<https://protect.genasys.com/>

genasys Protect
Mobile Application v1.0.0 (2023-08-08)

Search

Fires

About

Download App

< Back

Zone
RPV-E0160



Status
EVACUATION WARNING

REASON

Evacuation Warning in effect due to upcoming power shutoff. Electricity service will be discontinued indefinitely effective Sunday, September 1, at 12 p.m. PST. Prepare to evacuate and seek alternative housing. Pack important documents, medications, and essential items. For updates, visit rpvca.gov

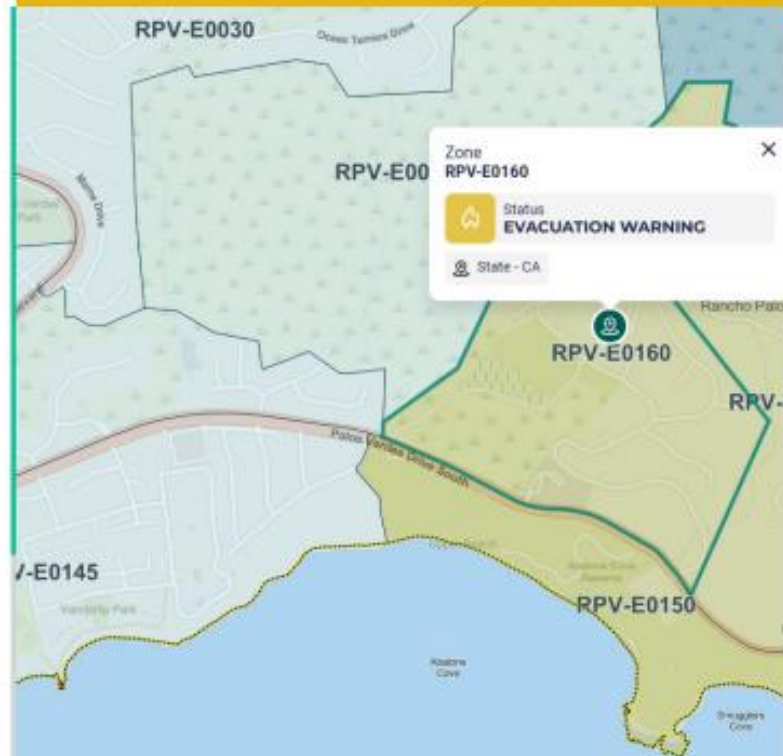
Potential threat to life and/or property. Those who require additional time to evacuate, and those with pets and livestock should leave now.



CRITICAL NOTIFICATIONS

Never miss an alert, and receive critical notifications on the go with the Genasys Protect mobile app

Download app now



Los Angeles County Sheriff's Department



INGRESS / EGRESS

- Palos Verdes Drive North / Hawthorne Boulevard
 - Palos Verdes Drive North / Crenshaw Boulevard
 - Palos Verdes Drive North / Rolling Hills Road
 - Palos Verdes Drive North / Palos Verdes Drive East
 - Palos Verdes Drive South / Palos Verdes Drive East
 - Palos Verdes Drive South / Palos Verdes Drive West
 - Palos Verdes Drive East / Miraleste Drive
-

Additional Resources: Information

- **LA County:** Visit <https://lacounty.gov/emergency/> for latest information regarding the fires, evacuation, shelter, health alerts, family assistance, etc.
- **Alert LA County:** Alert LA County is an opt in mass notification program utilized by the County of Los Angeles that allows individuals to receive emergency alerts by text, email and/or phone call. Register for Alert LA County: <https://alertlacounty.genasys.com/portal/en/register>
- **211LA:** Stay informed about the wildfires and access resources by calling 211 or visiting <https://211la.org/LA-Wildfires>



Los Angeles County Sheriff's Department

Additional Resources: Social Media

- LA County Sheriff on X: @LASDHQ
- LA County Sheriff Lomita Station Facebook:
<https://www.facebook.com/LomitaSheriffsStation/>
- Office of Emergency Management on X :
@ReadyLACounty
- LA County Fire on X: @LACoFDPIO
- LA County on X: @CountyofLA





The California Department of Insurance

Rob Obedoza

Outreach Analyst

Community Relations & Outreach Branch

RICARDO LARA
INSURANCE COMMISSIONER

California Department of Insurance



Safer From Wildfires Framework

Protect your home or business

+

Protect the immediate surroundings

+

Protect the whole community

RICARDO LARA
INSURANCE COMMISSIONER

California Department of Insurance



Protect Your Home or Business

- Class A fire-rated roof
- 5-foot ember-resistant zone around the structure
- Noncombustible 6 inches at the bottom
- Ember- and fire-resistant vents
- Double pane windows or added shutters
- Enclosed eaves



Protect The Immediate Surroundings

- Cleared vegetation and debris from under decks
- Move sheds and outbuildings at least 30 feet away
- Trim trees and remove brush in compliance with state and local defensible space laws

An aerial photograph of a suburban neighborhood. The street is paved and runs vertically through the center. Houses with tiled roofs and some solar panels are visible on the left. Palm trees and other landscaping are scattered throughout. Several cars are parked along the street and in driveways. The overall scene is bright and sunny.

Protect The Whole Community

- Neighborhoods can form a Firewise USA community
- Cities, counties, and local districts can become certified as a Fire Risk Reduction Community



California Sustainable Insurance Strategy

Modernizing Our Insurance Market:

Accessible Insurance for Californians

+

Create a Resilient Insurance Market

+

Protect Communities from Climate Change

RICARDO LARA
INSURANCE COMMISSIONER

California Department of Insurance



California Sustainable Insurance Strategy

- **Insurance Availability in At-Risk Areas** — Requiring insurance companies to write no less than 85% of homes and businesses in distressed areas identified by Insurance Commissioner.
- **Returning FAIR Plan Policyholders to Market** — With first priority given to homes and businesses following “Safer from Wildfires” regulation.
- **Cat Models/Mitigation** — New models will recognize mitigation and hardening requirements to appropriately price rates and discount benefits; previously not available in current rate making process today.
- **California-only reinsurance costs** — Protecting consumers from paying for other global catastrophes.
- **Modernizing FAIR Plan** — Expanding commercial coverage limits to \$20 million *per structure* closes coverage gaps for HOAs, affordable housing, and infill developments.

RICARDO LARA
INSURANCE COMMISSIONER

California Department of Insurance



Contact The Department of Insurance

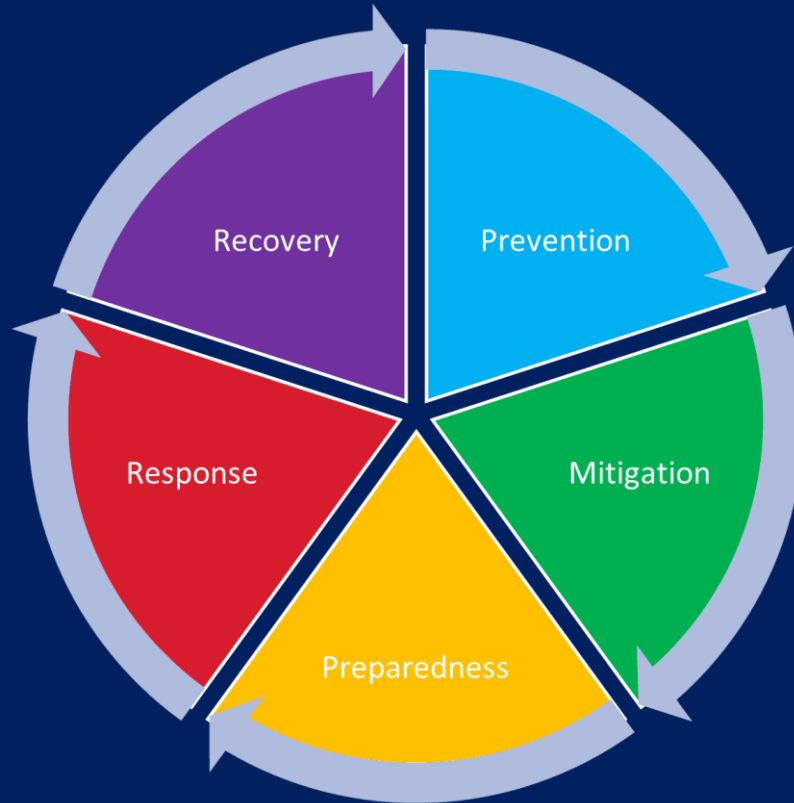
1-800-927-4357
insurance.ca.gov

RICARDO LARA
INSURANCE COMMISSIONER

California Department of Insurance



The Disaster Cycle





Where to find RPV Specific Emergency Info

- 1. Alert South Bay:** Primary source for local emergency alerts and information. Sign up at www.alertsouthbay.com.
- 2. PVPReady.gov** is a peninsula run website that hosts the Genasys Protect emergency zone map.
- 3. RPV's Website, MyRPV App, RPVtv, & Social Media**
- 4. Local Radio Stations:** KFI (640 AM), KNX (1070 AM), KBIG (104.3 FM), KROQ(106.7 FM), KCBS (93.1 FM) & **NOAA Weather radios**



QUESTIONS?

Anyone interested in asking an in-person question, please form a queue behind the mic stand.

Questions submitted online will be addressed at a later time.

After the townhall, the City will work to answer all submitted questions and will post the questions and answers onto the RPV Website.