

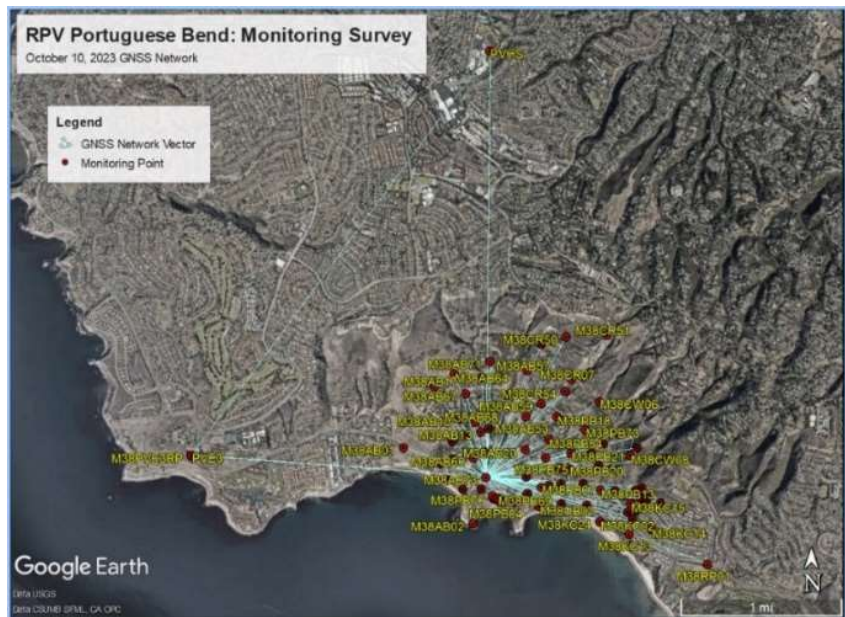
Portuguese Bend Land Movement Monitoring Survey
Survey Report for October 10, 2023 through April 18, 2025 Surveys
for the
City of Rancho Palos Verdes
prepared by
McGee Surveying Consulting

Date: Original Document is October 30, 2023 with subsequent addendum updates.

Portuguese Bend was generally monitored for land movement on a tri-annual basis with an initial survey of all current monitoring points at the beginning of the rainy season in the fall of each year followed by two subsequent partial Winter and partial Spring Monitoring Surveys of 30-40 points. In past years, an annual survey report was published following the spring survey; however, since the beginning of 2024 due to the excessive land movement the surveys have been conducted every six weeks, then every month, and then weekly as listed below. The October 10, 2023 M38 Survey is reported here in detail and subsequent surveys are reported as Addendums beginning with Addendum No. 1 for M39 on Page 7. The movement results are listed in the attached "PB MOVEMENT DATA POSTING... .xlsx" spreadsheet. Movements are reported for the average date of the surveys listed below.

List of Reported Monitoring Surveys

M38 Full Survey - October 10, 2023 (Page 1)
M39 Full Survey - January 13, 2024 (Page 7)
M40 Partial Survey - March 8, 2024
M41 Partial Survey - April 17, 2024
M42 Full Survey - May 28, 2024
M43 Full Survey - July 1, 2024
M44 Full Survey - August 1, 2024
M45 Full Survey - September 4, 2024 (Page 17)
M46 Partial Survey - September 20, 2024
M47 Partial Survey - September 27, 2024
M48 Full Survey - October 8, 2024
M49 Partial Survey - October 13, 2024
M50 Partial Survey - October 20, 2024 (Page 23)
M51 Full Survey - October 29, 2024
M52 Partial Survey - November 05, 2024
M53 Partial Survey - November 13, 2024
M54 Partial Survey - November 20, 2024
M55 Partial Survey - November 27, 2024 (Page 28)
M56 Full Survey - December 03, 2024
M57 Partial Survey - December 11, 2024
M58 Partial Survey - December 18, 2024
M59 Partial Survey - December 27, 2024
M60 Full Survey - January 07, 2025 (Page 35)
M61 Partial Survey - January 15, 2025
M62 Partial Survey - January 22, 2025
M63 Partial Survey - January 29, 2025
M64 Full Survey - February 03, 2025
M65 Partial Survey - February 11, 2025 (Page 41)
M66 Partial Survey - February 19, 2025
M67 Partial Survey - February 26, 2025
M68 Partial Survey - March 4, 2025
M69 Full Survey - March 9, 2025
M70 Partial Survey - March 19, 2025 (Page 47)
M71 Partial Survey - March 28, 2025
M72 Full Survey - April 5, 2025
M73 Partial Survey - April 18, 2025



OVERVIEW: McGee Surveying Consulting (MSC) performed the 2023-2024 land movement monitoring surveys at Portuguese Bend. The surveys were planned, coordinated, and executed by Michael McGee, PLS3945 of MSC who is responsible for the field surveys, processing observations, network adjustments, analysis, and reports. For a general history, details and procedures utilized in this survey but not re-stated here, see the "Portuguese Bend Land Movement 2020-2021 Monitoring Survey" report dated October 5, 2021, revised and published May 11, 2022. See also prior reports.

This Initial October 10, 2023 Survey determined the precise positions of 79 monitoring and control points. PVE3 and other CSRC CGPS (CGNSS) stations were used to support and reference the survey network and verify the recovery of the reference frame. This survey included two new points set in July 2023 for the M37 Survey in Klondike Canyon (Seaview) and ten new points set in September 2023. Additional points have been set on most subsequent surveys as necessary and noted in the addendums. Point KC02 was replaced by KC24 nearby in the October in anticipation of its future destruction. Point AB21 was recovered from the 2007 survey and substituted for nearby AB20 (destroyed by others) and will facilitated continuous monitoring at this location. The movements of new points are included in this Report as an Addendums. All monitoring survey coordinates and movements to date are listed in the spreadsheet “PB MOVEMENT DATA POSTING M?? 2007-[present].xlsx” attached to this Report.

PROJECT DATUMS - REFERENCE FRAME

The horizontal and vertical positions of the monitoring points are based on the North American Datum of 1983 (NAD83) Epoch 2007.00 and the North American Vertical Datum of 1988 (NAVD 88) reference frames. Although more current epoch adjustments are available e.g. NAD83 (2011) Epoch 2010.00, Epoch 2007.00 is retained to maintain consistently relative positions over time. Orthometric heights (NAVD88 Elevations) are based on measured ellipsoid heights combined with the NGS Geoid03 model and referenced to NGS Benchmarks. Although more current geoid models (e.g. Geoid18), are available, Geoid03 is retained to maintain consistently relative height movements over time as explained in said May 2022 Report. The latitudes and longitudes determined by GNSS measurements are converted to grid coordinates by projected onto NAD83 California State Plane Coordinates Zone 5 in US Survey Feet.

A valid recovery of the survey reference frame is essential to accurately measure and assess actual movements of individual points relative to the greater peninsula. The method for recovering the monitoring survey reference frame was modified in 2019 to improve the efficiency and simplify the processing and analysis of the monitoring surveys. Since 2007, Point AB02 (at the south end of Portuguese Point) has proven to be stable relative to PVE3 which is a California Spatial Reference Center (CSRC) Continuously Operated GPS Station (CGPS) at City Hall. The present procedure fixes PVE3RP (a PK Nail set on the concrete base of PVE3 as a reference mark to PVE3) and checking to point AB02. The proven positions relative to PVE3 are listed below.

Pt#	Latitude	Longitude	NAVD88 Ht	Source)
AB02	33-44-13.84878	118-22-26.19243	116.47 ft	2007 - October 2018 position
PVE3RP	33-44-35.74239	118-24-15.27451	346.88 ft	Average of 5 years referencing to PVE3

Comparing the positions of AB02 on Portuguese Point with PVE3RP at City Hall and other CSRC CGPS Stations provides a redundant verification that the reference frame is stable and successfully recovered for each monitoring survey. An additional stable check point “RP01” was established near the entrance to the Trump Golf Course for verification on future surveys.

The rate of movement (velocities) of the land masses have increased over the past five years compared to the previous 12-year average. See “[Assessment of Movements & Accelerations](#)” addressed on Page 11. Notwithstanding the 2019 monitoring process noted above, the processing of observations was necessarily modified for this fall survey because of the higher velocities as follows.

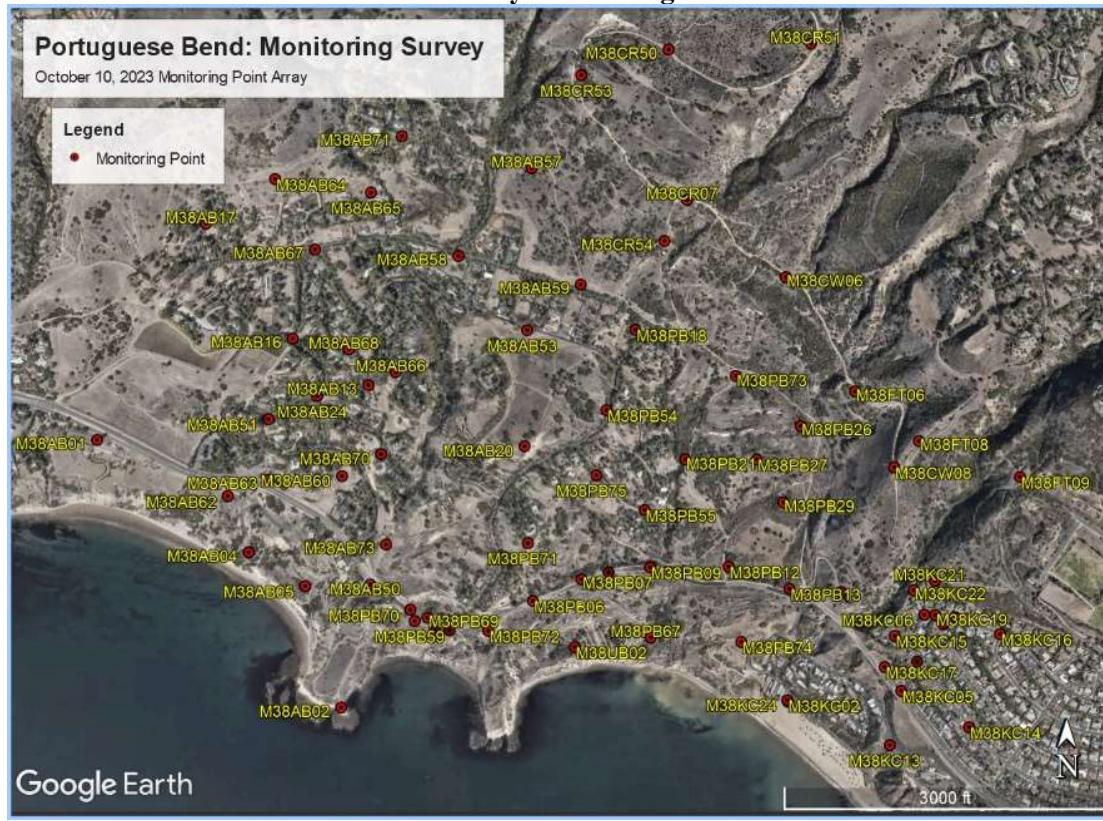
The October 2023 observations were processed as follows. The Base Station at AB73 was occupied over a six-day period and was found to have moved about 0.016 feet per day similar to other monitoring points in the area. To determine accurate positions and therefore precision movements it was necessary to determine a daily position of AB73. This was accomplished by processing the static data collected each day at AB73 with static data downloaded from the CSRC for CGPS stations PVE3 and PVHS. PVE3 is and has always been the basic constraint for the monitoring survey’s reference frame. PVHS was used to verify the stability of PVE3. Subsequently positions of AB73 were computed for each day referenced to PVE3. The identity for processing the daily observations of AB73 and related RTK measurements was to assign to AB73 the identity of AB731, AB732, AB733, AB734 & AB735 for days 1 through 5 occurring on October 8, 9, 10, 11 & 13.

BASE STATIONS – POINT NAMES

AB61 and AB20 have previously served as suitable GNSS Base Stations for referencing measured positions of the monitoring points. AB61 is no longer accessed due to its environmental sensitivity and lack of security. AB73, located on the US Pony Club property was utilized as the Base Station up to the October 2023 survey. Access was obtained unilaterally by MSC from the Pony Club manager for exclusive permission to enter the property confirmed prior to each survey entry with the understanding that 5 mph driving protocols are observed. Point AB73 was not a planned monitoring point but given the increased rates of movement, it fills in a gap between AB20 and AB50 and moves consistent with AB20. AB50 and AB73 are on the south and north sides of PVDS respectively. The separation between AB73 and AB50 is diminishing at the rate of about one foot per month in April 2024 resulting in a steeper slope on the north side of PVDS which may be de-stabilizing.

Due to the continuously increasing velocities of land movement, the present on-site base stations (AB20 and AB73) are no longer stable for measuring relative movements. In the January 2024 survey the Smartnet RTN network utilizing remote base stations connected by the Internet was used to measure positions and vectors which were re-referenced to PVE3RP and PVE3 in a network least squares adjustment. Surveys subsequent to the January survey are referenced to a new base station monument “RP02” set about 1400 feet northerly of the entrance to Abalone Cove Park and ¼ mile westerly of the present active slide boundary. See discussion hereafter.

October 2023 GNSS Survey Monitoring Points Network



The monitoring points names were established in the early surveys. The points are named for the slide they fall within and given a number. For example, slides AB, PB, KC, CR and FT. The number is increased as new points are established to replace abandoned or destroyed points or expand the network. Many of the original points are lost or no longer monitored. For data management purposes the point names are also prefixed with a sequential monitoring number to distinguish subsequent surveys. For example, for the occupation of AB02 on the 16th monitoring survey, AB02 is called M16AB02 where M16 indicates the sequence number since the first Monitoring Survey “M01” in September 2007. The prefix is stripped in the spreadsheet reports.

GNSS October 2023 M38 Survey Parameters, Metadata & Equipment

Date of Annual Initial Survey: M38 – October 10, 2023 (mean date) between 0800-1700 PDST (+7 hrs for UTC).
Constellations: GPS (31 Satellites), Russian GLONASS (23 Satellites), Galileo (23 Satellites) and Beidou (40 Satellites).
Observables (Carrier Waves): GPS (L1, L2, L5), GLONASS (L1, L2), Beidou (L1, L2); & Galileo (4 Carrier Waves)
Data Epoch Rate - 0.2 seconds (20HZ) at the GS18 Rover; 1 second at the GS18 Base
Satellites: 20-40; **GDOP:** < 2; **Elevation Mask:** 0° at the Rover and Base Station
Ephemeris: Broadcast for RTK vectors.
Weather: Mostly calm clear skies, temperature 65-75° F, no significant weather.
Space Weather: Boulder K Index 1-3 averaging 2 (gauges ionospheric activity on a scale of 0-9; less than 6 preferred)
Equipment: GNSS Base Receiver Unit No. M11, Operator: M. McGee, PLS; Occupied Base Station
 Receiver Make & Model: Leica GS18 with integrated Antenna; Mount: Tripod & Tribrach
 GNSS Rover Receiver Unit No. M10, Operator: M. McGee, PLS
 Receiver Make & Model: Leica GS18T with integrated Antenna; Mount: Fixed Height Pole #4

Processing & Adjustments: Leica Infinity v4.0 and "Starnet-PRO" version 11.0.6 Software

Prior to 2019, geodetic grade GNSS receivers collected static satellite signal data for post processing. The instrumentation was upgraded in 2020 to a Leica GS18 Base with a GS18T RTK Rover operating in real-time with an FM radio system which utilizes the latest technology to deliver increased productivity and precision of point positions. The GS18 receiver incorporates an Inertial Measurement Unit and tracks four Global Navigation Satellite Systems (GNSS): GPS, GLONASS, Galileo and Beidou Satellites. The differences in two measured vectors are acceptable if they fall within 0.03 feet (1 cm) horizontally; otherwise, additional measurements are usually obtained with some exceptions. Experience has shown the independent measurements generally agree on average about 0.02 feet when referenced to a local base receiver.

ADJUSTMENTS & ANALYSIS

Network Adjustment: A minimally constrained adjustment is utilized to develop NAD83 (2007) 2007.00 Epoch Zone 5 State Plane Coordinates and NAVD88 Heights of the monitoring points. The NAVD88 orthometric heights (elevations) are determined by combining the measured ellipsoid heights with the Geoid 03 Model. Previously, Point AB02 was fixed, and the stability verified relative to PVE3RP which is 1.5 to 3 miles westerly and outside the influence of the land movements. AB02 is expected to be stable and unaffected by the land movement; however, due to the substantially increased rates of movement resulting in dynamically differential movements the process was modified as noted above to assure accurate positions. This was accomplished by computing daily positions on the Base Station AB73 (AB731, AB732, AB733, AB734, AB735) relative to the reference frame fixed at station PVE3 noted above. Listed here are the differences.

ID	Differences in Feet			
	dN	dE	dZ	
PVE3	0.000	0.000		Fixed Horizontal, CGPS Station at City Hall
AB02	-0.022	-0.008	0.000	Fixed Elevation & Horizontal Check
PVE3RP	-0.010	-0.003	-0.055	Closure Check from PVE3 to AB73 to PVE3RP at City Hall
PVHS	-0.035	0.003		Horizontal Check on CGPS Station 2 Miles North of PB

Comments: Fixing the CGPS station PVE3 finds the differences at CGPS Station PVHS, Reference Point PVE3RP and Monitoring point AB02 are insignificant measurement noise. Given that AB02, PVE3RP, PVE3 and PVHS are in good relative agreement, the survey reference frame is deemed stable and successfully recovered from which local land movements were determined.

NETWORK ADJUSTMENT & ANALYSIS

Vector Residuals: In this Initial Survey, the two-dimensional vector residuals averaged 0.012 feet and the absolute value of the vertical residuals averaged 0.02 feet as listed below. The vector residuals are based on a network adjustment of independent point positions.

Vector Lengths(ft)		Two Dimensional Residuals			Absolute Vertical Residuals		
Vary	Average	Average	Std.Dev.	Maximum	Average	Std.Dev.	Range
131-16391	3792	0.012	0.006	0.029	0.02	0.02	-0.03 to +0.08

McGEE SURVEYING CONSULTING
5290 Overpass Road, Ste#107, Santa Barbara, CA 93111

Movement Accuracy: A point is deemed to have moved if, at the 95% level of confidence the horizontal movement (signal) of a point between two epochs is greater than the 95% Error (noise). Based on multiple independent occupations, the horizontal (2D) movements reported between October 2022 (M34) and October 2023 (M38) statistically attained a relative average accuracy of 0.014 feet at the 95% Level of Confidence with a Standard Deviation of 0.004 feet and a Range of 0.01 to 0.03 feet. See the attached file “PB MOVEMENT DATA POSTINGxlsx” for movements and coordinates.

Table of 2D & Vertical Movements for 12.0 Months October 10, 2022 (M34) & October 10, 2023 (M38)

Listed below are the movement Azimuths (directions clockwise from North) in degrees, the two-dimensional horizontal movements, and the vertical (elevation) changes during the period in US Survey Feet. See the attached spreadsheet “PB MOVEMENT DATA POSTING.....xlsx”. Note: The horizontal measured movement confidence is estimated at +/-0.02’ (1/4”); therefore, movements of less than 0.03’ are statistically indeterminate. The estimated vertical measured movement confidence is +/-0.05’.

* = Control Point for Recovery of the Reference Frame.

Point ID	Azimuth°	Horizontal Movement	Vertical Movement		Point ID	Azimuth°	Horizontal Movement	Vertical Movement
AB01	244	0.06	0.0		KC02	196	1.99	0.1
AB02	201	0.02	0.0		KC05	219	0.88	-0.1
AB04	223	4.80	-0.6		KC06	253	1.34	-0.5
AB05	231	3.51	-0.6		KC07	256	0.02	0.0
AB13	198	2.48	-0.6		KC13	193	0.70	0.1
AB16	191	1.20	0.0		KC14	259	0.12	-0.1
AB17	187	0.06	0.0		KC15	233	1.36	-0.4
AB20	199	3.06	-0.1		KC16	251	0.03	0.0
AB24	198	2.68	0.0		KC17	222	1.24	-0.3
AB50	236	1.99	0.2		KC18	202	2.86	-0.3
AB51	202	2.05	-0.2		PB04	203	3.62	-0.3
AB53	192	2.75	-0.4		PB06	200	3.35	-0.3
AB57	169	2.37	-0.7		PB07	201	3.85	-0.1
AB58	183	2.22	-0.4		PB08	201	3.61	0.0
AB59	186	3.17	-0.8		PB09	198	3.49	-0.1
AB60	204	2.69	-0.3		PB12	200	4.67	-0.3
AB62	203	3.73	-0.4		PB13	201	3.83	0.1
AB63	207	3.58	-0.9		PB18	187	3.51	-0.5
AB64	155	0.35	-0.1		PB20	199	4.23	-0.4
AB65	167	1.49	-0.3		PB21	195	3.93	-0.6
AB66	196	2.29	-0.5		PB26	192	3.94	-0.4
AB67	180	1.12	-0.2		PB27	195	4.18	-0.8
AB68	193	2.03	-0.6		PB29	200	4.02	-1.0
AB70	203	2.97	-0.1		PB54	196	3.39	-0.2
AB71	158	1.76	-0.6		PB55	199	3.86	-0.8
AB73	203	3.00	-0.3		PB59	199	4.11	-0.6
CR07	171	1.87	-1.6		PB67	194	5.93	-0.8
CR50	225	0.11	-0.1		PB68	202	3.49	-0.1
CR51	223	0.08	0.0		PB69	202	3.91	-0.3
CR53	231	0.21	0.0		PB70	207	3.58	-0.8
FT06	192	3.66	-1.7		PB71	198	3.65	-0.4
FT08	257	0.06	0.0		UB02	189	4.17	0.3
FT09	271	0.08	-0.1		*PVE3RP	195	0.01	0.0

McGEE SURVEYING CONSULTING
5290 Overpass Road, Ste#107, Santa Barbara, CA 93111

October 10, 2022 to October 10, 2023 Movement Distances (Feet) & Directions as Indicated

Note: Distances are exaggerated x 100 for viewing



Enlargement (PVDS)



Enlargement (Seaview)



MONITORING POINT MONUMENT NOTES & STATUS

See the May 2022 Survey Report for prior monument notes.

2023: 16 points added to the monitoring program as listed below. AB20 destroyed after October 2023 Survey and replaced by AB21. All other Point Descriptions are listed in prior Reports

MONITORING POINT MONUMENT DESCRIPTIONS

California State Plane Coordinates Zone 5 in the NAD83 (2007) Epoch 2007.00 and NAVD88 Datums are listed in the attached spreadsheet file "PB MOVEMENT DATA POSTING....".

Point Description

Points added in July and October 2023

AB21	2" Punched GIP in "Cable Box", Replaced AB20 after Oct. 2023 survey
PB72	2" mag nail & washer in conc. in 2"x 24" GIP Collared in Concrete
PB73	2" mag nail & washer in conc. in 2"x 24" GIP Collared in Concrete
PB74	2" mag nail & washer in conc. in 2"x 24" GIP Collared in Concrete
PB75	2" mag nail & washer in conc. in 2"x 24" GIP Collared in Concrete
CR54	2" mag nail & washer in conc. in 2"x 24" GIP Collared in Concrete
CW05	Found ½" x 48" Punched Rebar in Concrete Collar set June 2022 for CalWater
CW06	Found ½" x 48" Punched Rebar in Concrete Collar set June 2022 for CalWater
CW07	Found ½" x 48" Punched Rebar in Concrete Collar set June 2022 for CalWater
CW08	Found 2" Mag nail in Concrete Base of 3' Bollard set June 2022 for CalWater
KC19	2" Mag Nail Drilled in a Concrete Curb on South side of Dauntless Dr.
KC20	2" Mag Nail Drilled in a Concrete Curb on West side of Excelsior Dr.
KC21	2" mag nail & washer in conc. in 2"x 24" GIP Collared in Concrete
KC22	2" mag nail & washer in conc. in 2"x 24" GIP Collared in Concrete
KC23	2" Mag Nail Drilled in a Concrete Curb on South side of Admirable Dr.
KC24	2" Mag Nail Drilled in the Southwest Corner of a Concrete Vault, KC02 planned replacement
RP01	Check Point at Trump Golf Course established in July 2023 for verifying the recovery of a stable reference frame. Point is the top open part of the "B" on the south side of the rim of a manhole on the south side of PVDS at Conqueror Dr.

Addendum No. 1 Report

Portuguese Bend Land Movement Monitoring Survey Early Winter Full Monitoring Survey No. M39 - January 13, 2024

A special Portuguese Bend Full Monitoring Surveys (M39) was requested by the City in January 2024. The average date of the survey is January 13, 2024, 3.1 months after the October 10, 2023 Initial Monitoring for 2023-2024 reported above. The M39 survey included 79 monitoring points representing the present full network. A central base station (usually occupying AB73) was not feasible due to the excessive rate of land movement and reliance was made on the remote Smartnet RTN Stations which resulted in a lesser accuracy. For this survey, this was not an issue since the signal (measured movement) was much greater than the noise of the measurements expected to be less than 0.05'. A typical minimally constrained adjustment, as described above for M38, was processed for M39 to develop NAD83 (2007) Epoch 2007.00 CA Zone 5 State Plane Coordinates and NAVD88 Heights.

The horizontal (2D) vector residuals averaged 0.03 feet with a Standard Deviation of 0.02 feet. The absolute value of the vertical residuals averaged 0.04 feet with a Standard Deviation of 0.04 feet. At the 95% Level of Confidence, estimated accuracy of the horizontal (2D) movements is 0.05 feet.

NETWORK ADJUSTMENT & ANALYSIS

The network adjustment fixed point PVE3RP (an indirect fix on PVE3) and checked to other points found to be stable. Differences from the known fixed positions to the measured positions in this survey are listed here with their north, east and vertical components in feet. The successful recovery of a stable reference frame (coordinate system) is confirmed.

ID	Differences in Feet			
	dN	dE	dZ	
PVE3RP	0.00	0.00	0.00	Fixed Reference at City Hall
AB02	0.01	0.01	-0.05	Check Point at Portuguese Point
RP01	-0.01	0.01	0.05	Check Point at Trump Golf Course

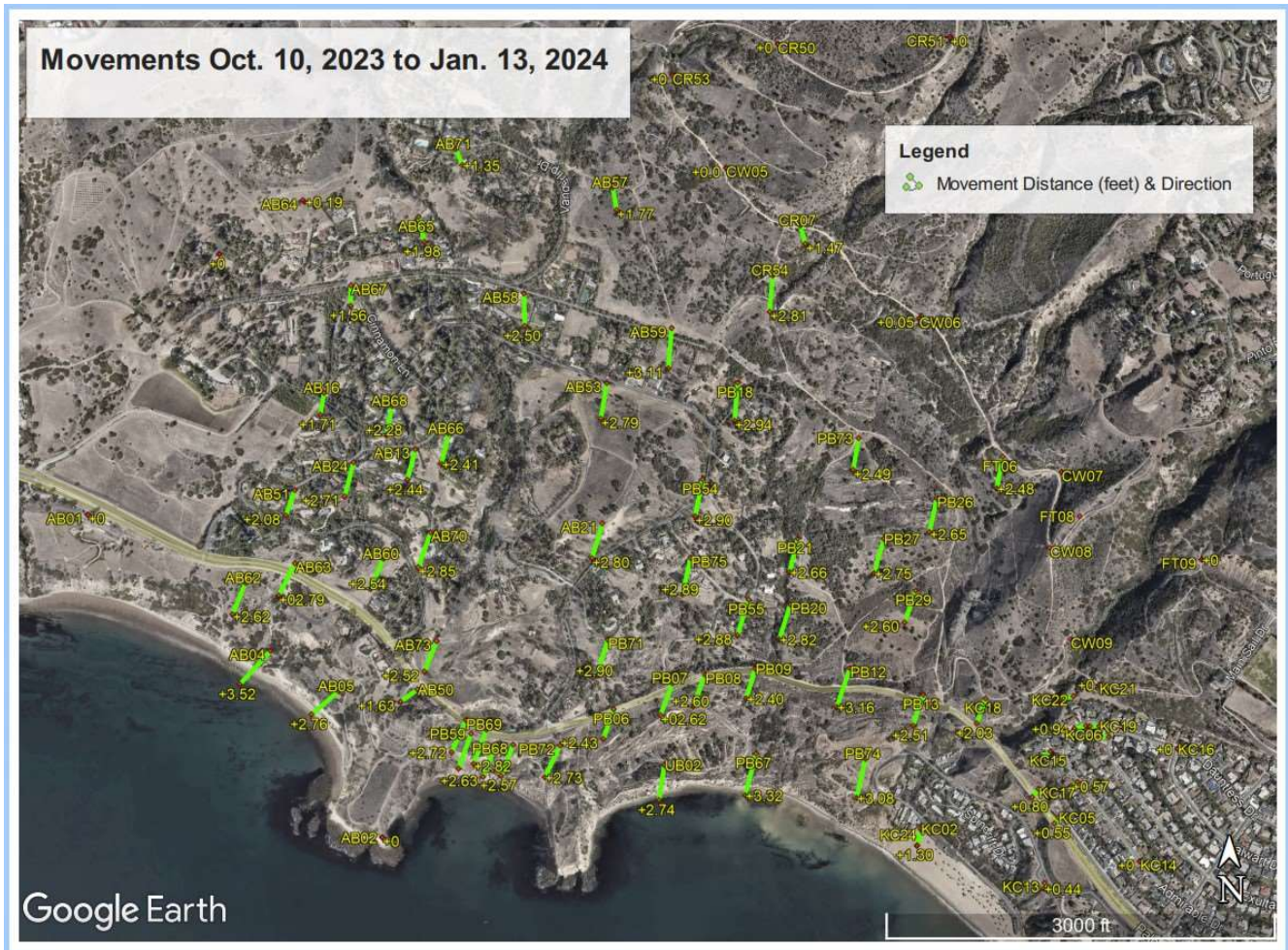
Table of 2D & Vertical Movements for 3.1 Months October 10, 2023 (M38) & January 13, 2024 (M39)

Listed below are the movement Azimuths (directions clockwise from North) in degrees, the two-dimensional horizontal movements, and the vertical (elevation) changes during the period in US Survey Feet. See the attached spreadsheet “PB MOVEMENT DATA POSTING (Revised 012224) 2007-Jan2024.xlsx”. Note: The horizontal measured movement confidence is estimated at +/-0.04’ (1/2”); therefore, indicated movements of less than 0.05’ are statistically indeterminate. The estimated vertical measured movement confidence is +/-0.08’.
* = Control Point for Recovery of the Reference Frame.

Point ID	Azimuth°	Horizontal Movement	Vertical Movement		Point ID	Azimuth°	Horizontal Movement	Vertical Movement
AB01	23	0.01	-0.1		KC13	188	0.44	0.0
AB02	27	0.01	0.0		KC14	262	0.03	0.0
AB04	223	3.52	-0.4		KC15	233	0.91	-0.3
AB05	230	2.76	-0.4		KC16	88	0.02	0.0
AB13	195	2.44	-0.4		KC17	218	0.80	-0.3
AB16	190	1.71	-0.1		KC18	200	2.03	-0.3
AB17	118	0.03	0.0		KC19	269	0.74	-0.2
AB21	197	2.80	0.1		KC20	277	0.67	-0.2
AB24	195	2.71	0.0		KC21	92	0.04	0.0
AB50	234	1.63	0.0		KC22	255	1.07	-0.5
AB51	200	2.08	0.0		KC23	237	0.57	-0.3
AB53	190	2.79	-0.3		KC24	199	1.22	-0.1
AB57	170	1.77	-0.5		PB04	202	2.63	0.0
AB58	179	2.50	-0.4		PB06	200	2.43	-0.2
AB59	185	3.11	-0.8		PB07	201	2.62	0.0
AB60	204	2.54	-0.2		PB08	201	2.60	0.0
AB62	203	2.62	-0.3		PB09	197	2.40	-0.1
AB63	207	2.79	-0.8		PB12	199	3.16	-0.3
AB64	128	0.19	0.0		PB13	199	2.51	0.0
AB65	167	1.98	-0.6		PB18	185	2.94	-0.5
AB66	193	2.41	-0.4		PB20	198	2.82	-0.3
AB67	181	1.56	-0.3		PB21	194	2.66	-0.5
AB68	191	2.28	-0.4		PB26	193	2.65	-0.2
AB70	200	2.85	-0.2		PB27	196	2.75	-0.5
AB71	158	1.35	-0.4		PB29	200	2.60	-0.7
AB73	202	2.52	-0.1		PB54	192	2.90	0.0
CR07	164	1.47	-1.2		PB55	198	2.88	-0.5
CR50	37	0.04	0.0		PB59	200	2.86	-0.3
CR51	107	0.04	0.2		PB67	195	3.32	-0.3
CR53	180	0.02	0.1		PB68	202	2.57	0.0
CR54	185	2.81	-0.9		PB69	201	2.82	-0.1
CW05	185	0.02	0.1		PB70	204	2.72	-0.3
CW06	59	0.05	0.1		PB71	197	2.90	0.0
FT06	191	2.48	-1.1		PB72	206	2.73	0.3
FT09	148	0.02	0.2		PB73	190	2.49	-0.4
KC02	193	1.30	0.0		PB74	193	3.08	-0.4
KC05	215	0.55	0.0		PB75	193	2.89	-0.1
KC06	256	0.94	-0.4		UB02	189	2.74	0.2
KC07	135	0.01	0.0		*PVE3RP	0	0	0.1

October 10, 2023 to January 13, 2024 Movement Distances (Feet) & Directions as Indicated

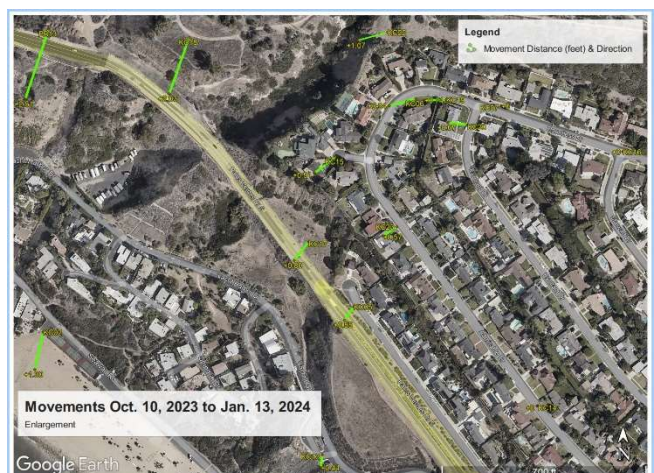
Note: Movement distances exaggerated 100x for viewing



Enlargement (PVDS)



Enlargement (Seaview)



ASSESSMENT of MOVEMENT VELOCITIES & ACCELERATIONS 2014 to 2024

Others performed monitoring surveys of the Portuguese Bend land movement between 1994 and 2006. McGee Surveying Consulting assumed responsibility and defensibility for the Portuguese Bend Monitoring Program in 2007. The annual measured movements between 2007 and 2018 were fairly small and stable as shown below by the averages and maximums of a sampling of points for the 2014-2018 period. The fall 2019 monitoring survey found the annual rate of movements (velocities) increased (accelerated) about 4 to 6 times and remained stable for the next four years through 2022. A “year” here is defined as the 12-month period beginning with the rainy season on October 1st.

Annual Average Movements in Feet, Maximum Movements & Change in the Average of a Sample of Points

ID	2014-2018 (4 Yrs)		2018-2022 (4 Yrs)		Change in
	Average	Max.	Average	Max.	Average
AB20	0.09	0.20	0.48	0.54	+5X
AB53	0.07	0.18	0.43	0.49	+6X
AB68	0.05	0.11	0.31	0.32	+6X
CR07	0.06	0.13	0.30	0.32	+5X
KC06	0.04	0.09	0.16	0.22	+4X
PB55	0.89	1.31	0.89	1.23	+1X (No Change)

In the following twelve months between October 2022 and October 2023, the annual rate of movements were found to have again accelerated. The table below shows a sample of points within Abalone Cove (AB), Klondike Canyon (KC) and Portuguese Bend (PB). The left half of the table compares the annual movements and rate of movements per month for the October 2021 to October 2022 with the October 2022 to October 2023 period. The annual rate of movement for the sample averages in each slide increased about 6x for AB, 8x for KC and 5x for PB.

In the same 12-month period between October 2022 and October 2023, accelerations were noted in the first seven months over the previous year and again in the last five months over the previous seven months as shown in the right half of the table below. The average rate of movement in each slide for these samples in the first seven months October 2022 through April 2023 increased about 3x for AB, 4x for KC and 2x for PB over the previous 12-month period of October 2021 to October 2022. The average rate of movements in each slide for the samples in the last five months May 2023 to October 2023 increased 4x for AB, 4x for KC and 3x for PB over the previous seven months.

October 2021 to October 2023 Movements & Rates per Month (Feet)									
Point	M32 > M34 (12 Mo.)		M34 > M38 (12 Mo.)		M34 > M36 (7 Mo.)		M36 > M38 (5 Mo.)		
	Oct '21 > Oct '22	Oct '22 > Oct '23	Oct '22 > Oct '23	Oct '22 > Oct '23	Oct '22 > May '23	May '22 > Oct '23	May '22 > Oct '23	May '22 > Oct '23	
	Movement	Rate/Mo	Movement	Rate/Mo	Movement	Rate/Mo	Movement	Rate/Mo	
AB20	0.51	0.042	3.06	0.255	0.84	0.119	2.22	0.444	
AB53	0.49	0.041	2.75	0.229	0.74	0.105	2.01	0.403	
AB58	0.41	0.034	2.22	0.185	0.60	0.085	1.62	0.325	
AB60	0.45	0.038	2.69	0.224	0.80	0.114	1.90	0.379	
AB67	0.18	0.015	1.12	0.094	0.32	0.046	0.80	0.160	
AB68	0.32	0.027	2.03	0.169	0.54	0.077	1.49	0.299	
AB70	0.48	0.040	2.97	0.248	0.84	0.120	2.14	0.427	
CR07	0.31	0.026	1.87	0.156	0.44	0.062	1.43	0.287	
Av Move	0.39	0.033	2.34	0.195	0.64	0.091	1.70	0.340	
KC06	0.16	0.014	1.34	0.111	0.33	0.047	1.01	0.202	
KC13	0.09	0.007	0.70	0.058	0.19	0.027	0.51	0.102	
KC17	0.14	0.012	1.24	0.104	0.31	0.044	0.93	0.187	
Av Move	0.13	0.011	1.09	0.091	0.27	0.039	0.82	0.163	
PB55	0.80	0.067	3.86	0.321	1.06	0.151	2.80	0.560	
PB70	0.72	0.060	3.58	0.299	1.14	0.163	2.44	0.488	
Av Move	0.76	0.063	3.72	0.310	1.10	0.157	2.62	0.524	

Movement & Rate of Movement per Month

In the last 3-month period October 10, 2023 to January 13, 2024, accelerations were noted again relative to the previous 12-months. The average rate of movements in each slide for the last 3-months for these samples increased about 4x for AB, 3x for KC and 3x for PB over the previous 12-month period of October 2022 to October 2023.

Point	M38 > M39 (3.1 Mo.)	
	Oct. 10, 2023 to Jan. 13, 2024	
	Movement	Rate/Mo
AB20	2.80	0.90
AB53	2.79	0.90
AB58	2.50	0.81
AB60	2.54	0.82
AB67	1.56	0.50
AB68	2.28	0.73
AB70	2.85	0.92
CR07	1.47	0.47
Average	2.35	0.76
KC06	0.94	0.30
KC13	0.44	0.14
KC17	0.80	0.26
Average	0.73	0.24
PB55	2.88	0.93
PB70	2.72	0.88
Average	2.80	0.90

RECOMMENDATION

Continuity in the methods, precision and reporting of the monitoring surveys are necessary to evaluating results relative to and consistent with prior 2007-2024 monitoring survey campaigns. Monitoring survey campaigns require the services of an independent GNSS/Geodetic expert to evaluate and validate results to assure program integrity and defensibility.

Maintaining a clearing of foliage in a 10' radius around monitoring points and trimming nearby trees and brush above eye height is necessary to assure a clear view of the sky for tracking satellites. Satellites, although unseen, can appear anywhere in the sky above the horizon and the radio signals passing through foliage degrade the required survey accuracy and productivity. Points AB04, AB13, AB17, AB24, AB51, AB58, AB66, PB18, PB54, PB55, CR51 and CR53 have foliage obstructions limiting sky (satellite) visibility and require clearing to facilitate accurate results of the surveys.

Addendum No. 2 Report

Portuguese Bend Land Movement Monitoring Survey Partial Monitoring Survey No. M40 – March 8, 2024

This is the mid-winter Partial Monitoring Survey No. M40 Report. The average date of the survey is March 8, 2024, 1.8 months after the January 13, 2024 Full Monitoring Survey. The survey included 44 monitoring points and 3 reference control points. Occupying a central base station (usually AB73) was not feasible due to the excessive rate of land movement and reliance was made on the remote Smartnet RTN Stations which resulted in a lesser accuracy. For this survey, this was not an issue since the signal (measured movement) was much greater than the noise of the measurements expected to be about less than 0.05'.

NETWORK ADJUSTMENT & ANALYSIS

A typical minimally constrained network adjustment, as described above for survey M38, was processed for M40 to develop NAD83 (2007) Epoch 2007.00 CA Zone 5 State Plane Coordinates and NAVD88 Heights. The adjustment fixed point PVE3RP and checked to other points expected to be and found stable. Differences from

the known fixed positions to the measured positions in this survey are listed here with their north, east and vertical components in feet.

ID	Differences in Feet			
	dN	dE	dZ	
PVE3RP	0.00	0.00	0.00	Fixed Reference at City Hall
AB02	0.02	0.01	-0.09	Check Point on Portuguese Point
RP01	0.00	0.02	-0.10	Check Point at Trump Golf Course

The successful recovery of a stable horizontal reference frame confirmed. The Z height variations are attributed to the noise in the Smartnet Network solution. RP01 is intended to replace AB02.

2D Horizontal & Vertical Movements for 1.8 Months January 13, 2024 (M39) to March 8, 2024 (M40)

The general rate of land movement increased significantly over the January 13, 2024 survey assessment. See the attached spreadsheet “PB MOVEMENT DATA POSTING....xlsx” for the movement Azimuths (directions clockwise from North) in degrees, the two-dimensional horizontal movements, and the vertical (elevation) changes during the period in US Survey Feet. See also the column for the rate of movement for each period annualized for an average month.

Accuracy Statements

The horizontal (2D) vector residuals averaged 0.04 feet with a Standard Deviation of 0.03 feet. The absolute value of the vertical residuals averaged 0.04 feet with a Standard Deviation of 0.03 feet.

At the 95% Level of Confidence, the accuracy of the horizontal (2D) movements is estimated to be less than 0.04’. Movements of less than 0.05’ are statistically indeterminate. The estimated vertical measured movement confidence is 0.06’ to 0.09’.

Addendum No. 3 Report

Portuguese Bend Land Movement Monitoring Survey

Partial Monitoring Survey No. M41 – April 17, 2024

This is the Spring Partial Monitoring Survey No. M41 Addendum Report. The field survey took place April 16-18, 2024, average date of April 17, 2024, 1.35 months after the last March 8, 2024 Monitoring Survey. The survey included 55 monitoring points and 3 reference control points. Eleven new monitoring points were set and surveyed. The location of two new points were identified and will be surveyed on the next campaign in late May after the monuments are set by others. See the points descriptions below.

Occupying previous base stations was not feasible due to the excessive rate of land movement. The Smartnet RTN Network does not require a base station but results in a somewhat lesser accuracy. Smartnet may be used in the future; however, it was deemed beneficial to establish a new base station outside the slide complex to facilitate future surveys. A new base station point “RP02” was set westerly of the slide complex and north of Abalone Cove Park.

NETWORK ADJUSTMENT & ANALYSIS

A typical minimally constrained adjustment, as described above for the M38 survey, was processed for M41 to develop NAD83 (2007) Epoch 2007.00 CA Zone 5 State Plane Coordinates and NAVD88 Heights. A least squares network adjustment was fixed at point PVE3RP to establish a position on the base at RP02 and thereby all other points in the survey. A check to RP01 easterly outside the slide complex was made as noted below. This process will be the standard on future surveys. Differences from the known fixed positions to the measured positions in this survey are listed here with their north, east and vertical components in feet.

ID	Differences in Feet			
	dN	dE	dZ	
PVE3RP	0.00	0.00	0.00	Fixed Reference at City Hall
RP01	-0.01	0.00	-0.03	Check Point at Trump Golf Course

The successful recovery of a stable horizontal reference frame is confirmed. Point AB02 replaced by RP01, was used in previous surveys to also confirm recovery of the reference frame has limited access do to the slides.

2D Horizontal & Vertical Movements for 1.35 Months March 8, 2024 (M40) to April 17, 2024 (M41)

The general rate of land movement increased significantly over the March survey. On average the velocities increased 76% with a maximum of 143%. Eight points doubled their velocities in the last six weeks over the previous eight weeks. In Abalone Cove and Portuguese Bend Slides many points are moving about three feet per month and in the Seaside Klondike Canyon Slide about $\frac{3}{4}$ of a foot per month. See the attached spreadsheet "PB MOVEMENT DATA POSTING....xlsx" for the movement Azimuths (directions clockwise from North) in degrees, the two-dimensional horizontal movements, and the vertical (elevation) changes during the period in US Survey Feet. See also the column for the rate of movement for each period annualized for an average month.

Accuracy Statements

The horizontal (2D) vector residuals averaged 0.04 feet with a Standard Deviation of 0.03 feet. The absolute value of the vertical residuals averaged 0.04 feet with a Standard Deviation of 0.03 feet.

The land is moving 0.05' to 0.10' daily. Most points are measured a day apart resulting in large residuals but accurate positions of the mean coordinate. Therefore, it is at estimated the 95% Level of Confidence, the accuracy of the horizontal (2D) movements is estimated to be less than 0.03'. Movements of less than 0.04' are statistically indeterminate. The estimated vertical measured movement confidence is 0.05' to 0.10'.

Monitoring Point Monument Descriptions

See prior Reports for all other Point Descriptions. See the attached spreadsheet file "PB MOVEMENT DATA POSTING...." for California State Plane Coordinates Zone 5 in the NAD83 (2007) Epoch 2007.00 and NAVD88 Datums n

Point Description of Points added in April 2024

AB74	8" Spike set as temporary monument to be replaced with a 2" GIP by others
AB75	8" Spike set as temporary monument to be replaced with a 2" GIP by others
AB76	8" Spike set as temporary monument to be replaced with a 2" GIP by others
AB77	Location identified, 2" GIP to be set by others
CR55	Set Mag Nail drilled in a Concrete walk/valley gutter
CR56	Location identified, 2" GIP to be set by others
KC25	Set Mag Nail drilled in a concrete & rock wall
KC26	Set Mag Nail drilled in a concrete wall
KC27	Set Mag Nail drilled in a concrete 6' fire pit
KC28	Set Mag Nail drilled in a concrete headwall
KC29	Set Mag Nail drilled in a concrete headwall
KC30	8" Spike set as temporary monument to be replaced with a 2" GIP by others
KC31	8" Spike set as temporary monument to be replaced with a 2" GIP by others
RP02	$\frac{1}{2}$ " x 4' rebar in large sloping meadow with T-bar witness for new base station

Addendum No. 4 Report

Portuguese Bend Land Movement Monitoring Survey Full Monitoring Survey No. M42 – May 28, 2024

This is Full Monitoring Survey No. 42 Addendum Report. The field survey took place May 27-30, 2024, with an average date of May 28, 2024, 1.35 months after the last April 17, 2024 Partial Monitoring Survey. The survey included 93 monitoring points and 3 reference control points. Two new monitoring points (AB77 & CR56) were set and surveyed. Seven temporary monuments were reset with a permanent monument. Monuments CW01, CW07 and CW08, set in 2022 for CalWater, were adopted for the purpose of these surveys. See the point descriptions below.

There are 14 monitoring points in the upper portion of the Reserve which are now difficult and time consuming to access due to the slides. An assistant provided by sub-contractor Chris Nelson & Associates (CNA) has been assigned these locations beginning with this May survey. CNA conducted their survey measurements with a

Trimble R12 referenced to the Smartnet RTN for positioning. These monitoring point observations were referenced to the RPV Portuguese Bend network by way of connections to RP01, RP02 & PVE3RP. In the late June survey, CAN will be using Leica instrument similar to those used by McGee Surveying Consulting to assure the highest precision and increased productivity.

NETWORK ADJUSTMENT & ANALYSIS

A minimally constrained adjustment, as described above for the above M38 Survey Report, was processed for M42 to develop NAD83 (2007) Epoch 2007.00 CA Zone 5 State Plane Coordinates and NAVD88 Heights. A least squares network adjustment was fixed at point PVE3RP to establish a position on the base at RP02 and thereby all other points in the survey. A check to RP01 easterly outside the slide complex and other nearly stable points were made as noted below. Differences from the known fixed positions to the measured positions by this survey are listed here with their north, east and vertical components in feet.

Differences in Feet			
ID	dN	dE	dZ
PVE3RP	-0.00	-0.00	-0.00
RP01	-0.00	0.01	-0.01
RP02	-0.03	0.02	-0.01
AB02	0.00	-0.02	0.09

Fixed Reference at City Hall

The successful recovery of a stable reference frame is confirmed. Point RP01 is intended to superseded AB02 used in previous surveys to confirm recovery of the reference frame. AB02 now has limited access do to the slides. Additionally, California Spatial Reference Center CGPS (Continuous Operating GPS Stations) PVE3 and PVHS are incorporated from time to time to verify the stability of the refence frame.

2D Horizontal & Vertical Movements for 1.35 Months April 17, 2024 (M41) to May 28, 2024 (M42)

The general rate of land movement increased in the last six weeks over the April survey. On average the velocities increased about 40% which is an increased rate of movement; however, the rate of acceleration is less than the estimated average of 76% in the previous six weeks. See the attached spreadsheet "PB MOVEMENT DATA POSTING....xlsx" for the movement Azimuths (directions clockwise from North) in degrees, the two-dimensional horizontal movements, and the vertical (elevation) changes during the period in US Survey Feet. See also the column for the rate of movement for each period annualized for an average 30.42-day month.

Accuracy Statements

The horizontal (2D) vector residuals are estimated at 0.02 feet with a Standard Deviation of 0.03 feet. The absolute value of the vertical residuals are estimated at 0.03 feet with a Standard Deviation of 0.04 feet.

The rate of land movement varies and is as much as 0.12' daily. It is estimated at the 95% Level of Confidence, the accuracy of the horizontal (2D) movements is estimated to be 0.04-0.06'. Movements less than the Confidence Level are statistically indeterminate. The estimated vertical measured movement confidence is 0.05' to 0.10'.

Monitoring Point Monument Descriptions

See prior Reports for all other Point Descriptions. See the attached spreadsheet file "PB MOVEMENT DATA POSTING...." for California State Plane Coordinates Zone 5 in the NAD83 (2007) Epoch 2007.00 and NAVD88 Datums n

Addendum No. 5 Report **Portuguese Bend Land Movement Monitoring Survey** **Full Monitoring Survey No. M43 – July 1, 2024**

This is Full Monitoring Survey No. 43 Addendum Report. The field survey took place June 30, 2024 to July 3, 2024 with an average date taken as July 1, 2024, 1.12 months after the last May 28 Monitoring Survey. The survey included 93 monitoring points and 3 reference control points.

14 monitoring points in the upper portion of the Reserve require about three miles of hiking to access due to the slides. An assistant provided by sub-contractor Chris Nelson & Associates (CNA) is assigned these locations. A loaner GS18 Leica instrument same as used by McGee Surveying Consulting (MSC) and connected to MSC's RTK base station is utilized to assure the highest precision and increased productivity.

NETWORK ADJUSTMENT & ANALYSIS

A minimally constrained adjustment, as described above for the above M38 Survey Report, was processed for M43 to develop NAD83 (2007) Epoch 2007.00 CA Zone 5 State Plane Coordinates and NAVD88 Heights. A least squares network adjustment was fixed at point PVE3RP to verify the position on the base at RP02 and thereby all points in the survey. A check to RP01 easterly outside the slide complex, AB02 and other nearly stable points were made as noted below. Differences from the known fixed positions to the measured positions by this survey are listed here with their north, east and vertical components in feet.

Differences in Feet				
ID	dN	dE	dZ	
PVE3RP	-0.00	-0.00	-0.00	Fixed Reference at City Hall
RP01	+0.01	-0.01	-0.00	
RP02	-0.03	0.02	-0.01	
AB02	-0.01	-0.02	+0.03	
PVE3	+0.01	+0.00	-0.11	CSRC CGPS Station at City Hall

Recovery and confirmation of a stable reference frame is essential to assess the actual movement of the monitoring points. The differences listed above are at the noise level of the measurements confirming a successful recovery of the reference frame. Because AB02 has limited access do to the slides, Point RP01 is intended to supplement AB02 used in previous surveys to confirm recovery of the reference frame. Additionally, California Spatial Reference Center CGPS (Continuous Operating GPS Stations) PVE3 and PVHS are incorporated to verify the stability and recovery of the reference frame.

2D Horizontal & Vertical Movements for 1.12 Months M42 to M43

The rate of land movement varies and averages about 3 feet per average month with a maximum of 4.88 feet. The general rate of land movement increased about 25% on average; however, the rate of acceleration is less as indicated by the estimated average increase of 41% in the rate of land movement in the previous month. See the attached spreadsheet "PB MOVEMENT DATA POSTING....xlsx" for the movement Azimuths (directions clockwise from North) in degrees, the two-dimensional horizontal movements, and the vertical (elevation) changes during the period in US Survey Feet. See also the column for the rate of movement for each period annualized for an average 30.42-day month.

Accuracy Statements

The horizontal (2D) vector residuals are estimated at 0.02 feet with a Standard Deviation of 0.03 feet. The absolute value of the vertical residuals are estimated at 0.03 feet with a Standard Deviation of 0.04 feet.

It is estimated at the 95% Level of Confidence, the accuracy of the horizontal (2D) movements is estimated to be 0.04-0.06'. Movements less than the Confidence Level are statistically indeterminate. The estimated vertical measured movement confidence is 0.05' to 0.10'.

Monitoring Point Monument Descriptions

See prior Reports for Point Descriptions. See the attached spreadsheet file "PB MOVEMENT DATA POSTING...." for California State Plane Coordinates Zone 5 in the NAD83 (2007) Epoch 2007.00 and elevations in the NAVD88 Datum.

Point Description: Update of Points set in April & May

AB74	1/2" x 4' rebar encased in concrete witnessed by a steel t-bar post
AB75	1/2" x 4' rebar encased in concrete witnessed by a steel t-bar post
AB76	1/2" x 4' rebar encased in concrete witnessed by a steel t-bar post
AB77	1" x 24" GIP with cap "Control Point" encased in concrete witnessed by a steel t-bar post
CR56	1" x 24" GIP with cap "Control Point" encased in concrete witnessed by a steel t-bar post
CW07	½" x 4' punched rebar in concrete with T-bar witness post

CW08 ½" x 4' punched rebar in concrete with T-bar witness post
KC30 1/2" x 4' rebar encased in concrete witnessed by a steel t-bar post
KC31 8" spike set between two steel posts in line with a string of boulders
KC32 Temporary reference to KC31, took west side of chain link fence post south of PVDS
KC33 Found 1.5" GIP for Property Corner on top of dyke
RP02 ½" x 4' punched rebar in concrete in large sloping meadow witnessed by a steel T-bar post

Addendum No. 6 Report

Portuguese Bend Land Movement Monitoring Survey

Full Monitoring Survey No. M44 – August 1, 2024

This is Full Monitoring Survey No. 44 Addendum Report. The field survey took place July 30, 2024 to August 3, 2024 with an average date taken as August 1, 2024, 1.02 months after the last July 1 Monitoring Survey. The survey included 98 monitoring points and 3 reference control points (RP01, RP02, PVE3RP & AB02).

Many of the monitoring points in the upper portion of the Reserve require substantial hiking for access due to the slides. An assistant provided by sub-contractor Chris Nelson & Associates (CNA) is assigned these locations.

NETWORK ADJUSTMENT & ANALYSIS

A minimally constrained adjustment, as described above for the above M38 Survey Report, was processed for M44 to develop NAD83 (2007) Epoch 2007.00 CA Zone 5 State Plane Coordinates and NAVD88 Heights. A least squares network adjustment was fixed at point PVE3RP to verify the position at the base station point RP02 and thereby all points in the survey. A check to RP01 easterly outside the slide complex, AB02 and other nearly stable points were made as noted below. Differences from the known fixed positions to the measured positions by this survey are listed here with their north, east and vertical components in feet.

ID	Differences in Feet			
	dN	dE	dZ	
PVE3RP	-0.00	-0.00	-0.00	Fixed Reference at City Hall
RP01	0.03	-0.03	0.01	Check Point
RP02	-0.00	0.01	0.07	Base Station
AB02	-0.01	0.00	0.07	Check Point
AB17	0.00	0.00	0.05	Point Historically Not Moving
CW01	0.01	0.02	0.11	Point Historically Not Moving
KC16	0.00	0.01	0.10	Point Historically Not Moving

Recovery and confirmation of a stable reference frame is essential to assess the actual movement of the monitoring points. The differences listed above are at the noise level of the measurements confirming a successful recovery of the reference frame. Because AB02 has limited access due to the slides, Point RP01 is intended to supplement AB02 used in previous surveys to confirm recovery of the reference frame. Additionally, California Spatial Reference Center CGPS (Continuous Operating GPS Stations) PVE3 and PVHS are incorporated at times for additional verification of the stability and recovery of the reference frame.

2D Horizontal & Vertical Movements for 1.02 Months M43 to M44

The rate of land movement varies and averaged about 2.8 feet per average month in the last period with a maximum of 4.69 feet per month. The general change in the rate of land movement (velocity) slowed and varied from about -13% to +13% and averaged nearly zero. See the attached spreadsheet "PB MOVEMENT DATA POSTING....xlsx" for the movement Azimuths (directions clockwise from North) in degrees, the two-dimensional horizontal movements, vertical (elevation) changes during the period in US Survey Feet. See also the column for the rate of movement for each period annualized for an average 30.42-day month.

Accuracy Statements

The horizontal (2D) vector residuals are estimated at 0.02 feet with a Standard Deviation of 0.03 feet. The absolute value of the vertical residuals are estimated at 0.03 feet with a Standard Deviation of 0.04 feet.

It is estimated at the 95% Level of Confidence, the accuracy of the horizontal (2D) movements is estimated to be 0.04'. Movements less than the Confidence Level are statistically indeterminate. The estimated vertical measured movement confidence is about 0.05' to 0.10'.

Monitoring Point Monument Descriptions

See prior Reports for Point Descriptions. See the attached spreadsheet file "PB MOVEMENT DATA POSTING...." for California State Plane Coordinates Zone 5 in the NAD83 (2007) Epoch 2007.00 and elevations in the NAVD88 Datum.

Points AB71 and CR07 destroyed since the last monitoring survey by slides and construction.

Point Description: Update of Set Points

AB78 2" Magnetic Nail drilled in a concrete curb on the N. side of Vanderlip Dr., replaced AB71
CR57 ½" x 4' punched rebar in concrete with T-bar witness post, replaces CR07
KC34 2" Magnetic Nail set in Stalwart Dr. East of Schooner Dr.
KC35 2" Magnetic Nail set in Xn of Schooner & Stalwart Dr.
KC36 2" Magnetic Nail set in Xn of Schooner & Admirable Dr.
KC37 Punch mark on north side Sewer MH in Admirable Dr. East of Schooner Dr.

Addendum No. 7 Report

Portuguese Bend Land Movement Monitoring Survey Full Monitoring Survey No. M45 – September 4, 2024

This is Full Monitoring Survey No. 45 Addendum Report. The field survey took place September 3, 2024 to September 6, 2024 with an average date taken as September 4, 2024, 1.12 months after the last Monitoring Survey. The survey included 102 monitoring points and 3 reference control points (RP01, RP02, PVE3RP & AB02).

Many of the monitoring points in the upper portion of the Reserve require substantial hiking for access due to the slides. An assistant provided by sub-contractor Chris Nelson & Associates (CNA) is assigned these locations.

Network Adjustment & Analysis

A minimally constrained adjustment was processed for the M45 survey to develop NAD83 (2007) Epoch 2007.00 CA Zone 5 State Plane Coordinates and NAVD88 Heights. A least squares network adjustment was fixed at point PVE3RP to verify the position at the base station point RP02 and thereby all points in the survey. A check to RP01 easterly outside the slide complex, AB02 and other nearly stable points were made as noted below. Differences from the known fixed positions to the measured positions by this survey are listed here with their north, east and vertical components in feet.

Differences in Feet			
ID	dN	dE	dZ
AB02	-0.02	-0.02	0.00
PVE3RP	-0.00	-0.00	-0.00
RP01	-0.02	0.01	0.05
RP02	0.01	0.00	0.02

Recovery and confirmation of a stable reference frame is essential to assess the actual movement of the monitoring points. The differences listed above are at the noise level of the measurements confirming a successful recovery of the reference frame. Because AB02 has limited access do to the slides, Point RP01 is intended to supplement AB02 used in previous surveys to confirm recovery of the reference frame.

Additionally, California Spatial Reference Center CGPS (Continuous Operating GPS Stations) PVE3 and PVHS are incorporated periodically for additional verification of the stability and recovery of the reference frame.

2D Horizontal & Vertical Movements for 1.12 Months M44 to M45

The rate of land movement varies and averaged about 2.6 feet per average month in the last period with a maximum of 4.0 feet per month. The general change in the rate of land movement (velocity) slowed and varied from about -25% to +1% and averaged -13%. See the attached spreadsheet "PB MOVEMENT DATA POSTING...M???.xlsx" for the movement Azimuths (directions clockwise from North) in degrees, the two-dimensional horizontal movements, vertical (elevation) changes during the period in US Survey Feet. See also the column for the rate of movement for each period annualized for an average 30.42-day month.

Accuracy Statements

The horizontal (2D) vector residuals are estimated at 0.02 feet with a Standard Deviation of 0.03 feet. The absolute value of the vertical residuals are estimated at 0.03 feet with a Standard Deviation of 0.04 feet.

It is estimated at the 95% Level of Confidence, the accuracy of the horizontal (2D) movements are estimated at 0.04'. Movements less than the Confidence Level are statistically indeterminate. The estimated vertical measured movement confidence is about 0.05' to 0.10'.

Monitoring Point Monument Notes & Descriptions

See prior Reports for existing point descriptions. See the attached spreadsheet file "PB MOVEMENT DATA POSTING...M??" for California State Plane Coordinates Zone 5 in the NAD83 (2007) Epoch 2007.00 and elevations in the NAVD88 Datum.

Points KC27 and PB73 were destroyed since the last monitoring survey by construction. PB73 was reset nearby as new point PB76. Other new points are reported as follows: AB79, AB80, CR55A (replaces CR55), CR58, CR59, FT10, & KC38 on the offshore uplift. The uplifted area is generally about 11 feet above mean lower low water. Points KC34, KC35, KC36 & KC37 were set last month along and easterly of Schooner to assess if movement was occurring in that area. No movement was detected above the noise level of the measurements.

Point Description: Update of Set Points

AB79	Found L&T on curb of 31&34 San Clemente Dr.
AB80	2" Magnetic Nail drilled into the asphalt road on Santa Catalina Dr.
CR55A	Punch in center of square plastic marker in centerline of Valley View Dr.
CR58	Set 5/8"x 4' rebar/ plastic cap "Control Pt"
CR59	Set 5/8"x 4' rebar/ plastic cap "Control Pt"
FT10	Set 1"x 18" GIP/ plastic cap "Control Pt"
KC38	8" Spike on small bentonite rise in uplift 300' south of old shoreline

Addendum No. 8 Report

Portuguese Bend Land Movement Monitoring Survey Partial Monitoring Survey No. M46 – September 20, 2024

This is Partial Monitoring Survey No. 46 Addendum Report. The field survey took place September 20 2024 0.53 months after the last M45 Monitoring Survey. The survey included 19 monitoring points along PVDS and 4 reference control points (RP01, RP02, RP03 & PVE3RP).

Network Adjustment & Analysis

A minimally constrained adjustment was processed for the M46 survey to develop NAD83 (2007) Epoch 2007.00 CA Zone 5 State Plane Coordinates and NAVD88 Heights. A least squares network adjustment was fixed at point RP02 and a check was made to PVE3RP and RP01 noted below. Differences from the known fixed positions to the measured positions by this survey are listed here with their north, east and vertical components in feet.

Differences in Feet				
ID	dN	dE	dZ	
PVE3RP	0.01	0.00	0.02	Reference at City Hall
RP01	-0.03	0.00	0.02	Check Point
RP02	0.00	0.00	0.00	Fixed Base Station

Recovery and confirmation of a stable reference frame is essential to assess the actual movement of the monitoring points. The differences listed above are at the noise level of the measurements confirming a successful recovery of the reference frame. Additionally, California Spatial Reference Center CGPS (Continuous Operating GPS Stations) PVE3 and PVHS are incorporated periodically for additional verification of the stability and recovery of the reference frame.

2D Horizontal & Vertical Movements for 0.56 Months M45 to M46

The rate of land movement for this sub-set of 19 points along PVDS varies and averaged about 1.9 feet per average month in the last period with a maximum of 2.6 feet per month. The general change in the rate of land movement (velocity) slowed and varied from about -47% to -7% and averaged -27%. See the attached spreadsheet "PB MOVEMENT DATA POSTING...M??.xlsx" for the movement Azimuths (directions clockwise from North) in degrees, the two-dimensional horizontal movements, vertical (elevation) changes during the period in US Survey Feet. See also the column for the rate of movement for each period annualized for an average 30.42-day month.

Accuracy Statements

The horizontal (2D) vector residuals are estimated at 0.02 feet with a Standard Deviation of 0.03 feet. The absolute value of the vertical residuals are estimated at 0.03 feet with a Standard Deviation of 0.04 feet.

It is estimated at the 95% Level of Confidence, the accuracy of the horizontal (2D) movements are estimated at 0.04'. Movements less than the Confidence Level are statistically indeterminate. The estimated vertical measured movement confidence is about 0.05' to 0.10'.

Monitoring Point Monument Notes & Descriptions

See prior Reports for existing point descriptions. See the attached spreadsheet file "PB MOVEMENT DATA POSTING...M??" for California State Plane Coordinates Zone 5 in the NAD83 (2007) Epoch 2007.00 and elevations in the NAVD88 Datum.

Point Description: Update of Set Points

RP03 Set 1/2"x 4' rebar in open field, bears N69-30E 44.37' from RP02 Set as a new reference point to allow for operating a second base station and for a check.

Addendum No. 9 Report

Portuguese Bend Land Movement Monitoring Survey

Partial Monitoring Survey No. M47 – September 27, 2024

This is Partial Monitoring Survey No. 47 Addendum Report. The field survey took place September 27, 2024 0.23 months after the last M46 Monitoring Survey. The survey included 19 monitoring points along PVDS and 4 reference control points (RP01, RP02, RP03 & PVE3RP). See the attached spreadsheet "PB MOVEMENT DATA POSTING...xlsx" for the movements.

Network Adjustment & Analysis

A minimally constrained adjustment was processed for the M47 survey to develop NAD83 (2007) Epoch 2007.00 CA Zone 5 State Plane Coordinates and NAVD88 Heights. A least squares network adjustment was fixed at point RP02 and a check was made to PVE3RP and RP01 noted below. Differences from the known

fixed positions to the measured positions by this survey are listed here with their north, east and vertical components in feet.

Differences in Feet				
ID	dN	dE	dZ	
PVE3RP	0.00	-0.01	0.03	Reference at City Hall
RP01	-0.02	0.04	0.00	Check Point
RP02	-0.00	-0.00	-0.00	Check Point
RP03	0.00	0.00	-0.01	Fixed Base Station

Recovery and confirmation of a stable reference frame is essential to assess the actual movement of the monitoring points. The differences listed above are at the noise level of the measurements confirming a successful recovery of the reference frame. Additionally, California Spatial Reference Center CGPS (Continuous Operating GPS Stations) PVE3 and PVHS are incorporated periodically for additional verification of the stability and recovery of the reference frame.

2D Horizontal & Vertical Movements for 0.23 Months M46 to M47

In the “PB MOVEMENT DATA POSTING” spreadsheet, the measured land movements are listed for the period and also for a normalized average month of 30.42 days for comparing the rates of movement for previous periods. This survey included a sub-set of 19 points along PVDS. The movements vary and average about 1.4 feet with a maximum of 2.2 feet for an average month. The change in the rate of land movement (velocity) over the previous period slowed and varies from about -55% to -15% averaging about -30%. The attached spreadsheet “PB MOVEMENT DATA POSTING... .xlsx” lists the movement azimuths (directions clockwise from north) in degrees, the two-dimensional horizontal movements, and vertical (elevation) changes during the period in US Survey Feet. See also the column for the rate of movement for each period normalized for an average 30.42-day month.

Accuracy Statements

The horizontal (2D) vector residuals are estimated at 0.02 feet with a Standard Deviation of 0.03 feet. The absolute value of the vertical vector residuals are estimated at 0.03 feet with a Standard Deviation of 0.04 feet.

Between two surveys, the accuracy of the measured horizontal (2D) movements is estimated, at the 95% Level of Confidence, at 0.04'. Movements less than the Confidence Level are statistically indeterminate. The estimated vertical measured movement confidence is about 0.05' to 0.10' depending on obstructions to satellite signals.

Monitoring Point Monument Notes & Descriptions

See prior Reports for existing point descriptions. See the attached spreadsheet file “PB MOVEMENT DATA POSTING...” for California State Plane Coordinates Zone 5 in the NAD83 (2007) Epoch 2007.00 and elevations in the NAVD88 Datum.

Addendum No. 10 Report

Portuguese Bend Land Movement Monitoring Survey Full Monitoring Survey No. M48 – October 8, 2024

This is Full Monitoring Survey No. M48 Addendum Report. The field survey took place October 7-10, 2024, average date October 8, 2024, 1.12 months after M45 the last Full Monitoring Survey. The survey included 105 monitoring points and 4 reference control points (RP01, RP02, RP03 & PVE3RP). See the attached spreadsheet “PB MOVEMENT DATA POSTING... .xlsx” for the movements. Partial surveys of 19 points along PVDS were published as M46 and M47 as listed in the spreadsheet. The report for M45 to M48 is addressed here and in the spreadsheet.

Network Adjustment & Analysis

A minimally constrained adjustment was processed for the M48 survey to develop NAD83 (2007) Epoch 2007.00 CA Zone 5 State Plane Coordinates and NAVD88 Heights. A least squares network adjustment was fixed at point RP02 and a check was made to PVE3RP, RP01 and RP03 noted below. Differences from the known fixed positions to the measured positions by this survey are listed here with their north, east and vertical components in feet.

ID	Differences in Feet			
	dN	dE	dZ	
PVE3RP	0.00	0.00	0.02	Reference at City Hall
RP01	-0.02	0.00	0.05	Check Point
RP02	-0.00	-0.00	-0.00	Fixed Base Station
RP03	0.00	0.00	0.02	Check Point

Recovery and confirmation of a stable reference frame is essential to assess the actual movement of the monitoring points. The differences listed above are at the noise level of the measurements confirming a successful recovery of the reference frame. Additionally, California Spatial Reference Center CGPS (Continuous Operating GPS Stations) PVE3 and PVHS are incorporated periodically for additional verification of the stability and recovery of the reference frame.

2D Horizontal & Vertical Movements for M45 to M48

In the attached "PB MOVEMENT DATA POSTING... .xlsx" spreadsheet, the measured land movements are listed for the period and also for a normalized average month of 30.42 days for comparing the rates of movement for previous periods. This survey included 105 points. For the stated period, the normalized movements vary and average about 1.6 feet with a maximum of 2.8 feet for an average month. The change in the rate of land movement (velocity) over the previous period slowed and varies from about -63% to -14% averaging about -41%. The attached spreadsheet "PB MOVEMENT DATA POSTING... .xlsx" lists the movement azimuths (directions clockwise from north) in degrees, the two-dimensional horizontal movements, and vertical (elevation) changes during the period in US Survey Feet. See also the column for the rate of movement for each period normalized for an average 30.42-day month.

Accuracy Statements

The horizontal (2D) vector residuals are estimated at 0.01 feet with a Standard Deviation of 0.01 feet and range 0.00 to 0.05'. The absolute value of the vertical vector residuals are estimated at 0.02 feet with a Standard Deviation of 0.02 feet, and range -0.06 to +0.08'.

The accuracy or uncertainty of the measured horizontal (2D) movements between two monitoring surveys is estimated to be 0.04' at the 95% Level of Confidence. Movements less than the Confidence Level are statistically indeterminate. The estimated vertical measured movement confidence is about 0.05' to 0.10' depending on obstructions to satellite signals. "Deflection Analysis" or "Trend Analysis" is an alternate method for assessing uncertainties.

Monitoring Point Monument Notes & Descriptions

See prior Reports for existing point descriptions. See the attached spreadsheet file "PB MOVEMENT DATA POSTING... .xlsx" for California State Plane Coordinates Zone 5 in the NAD83 (2007) Epoch 2007.00 and elevations in the NAVD88 Datum

Point Description: Update of Set Points

CR60 Set 1/2"x 4' rebar/plastic cap "Control Point" in open field, northeast of the Ishibashi Trail
PB71RP Reference to PB71 Set 2" PK Mag Nail/Washer on southeast side paved driveway, northeast

Addendum No. 11 Report

Portuguese Bend Land Movement Monitoring Survey

Partial Monitoring Survey No. M49 – October 13, 2024

This is Partial Monitoring Survey No. M49 Addendum Report. The field survey took place October 13, 2024, 6 days or 0.20 months after the last M48 Partial Monitoring Survey dated October 8, 2024. The survey included 19 monitoring points along PVDS and 4 reference control points (RP01, RP02, RP03 & PVE3RP). See the attached spreadsheet “PB MOVEMENT DATA POSTING... .xlsx” for the movements.

Network Adjustment & Analysis

A minimally constrained adjustment was processed for the M49 survey to develop NAD83 (2007) Epoch 2007.00 CA Zone 5 State Plane Coordinates and NAVD88 Heights. A least squares network adjustment was fixed at point RP02 and a check was made to PVE3RP, RP01 and RP03 noted below. Differences from the known fixed positions to the measured positions by this survey are listed here with their north, east and vertical components in feet.

Differences in Feet				
ID	dN	dE	dZ	
PVE3RP	-0.01	-0.01	0.06	Reference at City Hall
RP01	-0.02	0.02	-0.01	Check Point
RP02	-0.00	-0.00	-0.00	Fixed Base Station
RP03	0.00	0.00	0.02	Check Point

Recovery and confirmation of a stable reference frame is essential to assess the actual movement of the monitoring points. The differences listed above are at the noise level of the measurements confirming a successful recovery of the reference frame. Additionally, California Spatial Reference Center CGPS (Continuous Operating GPS Stations) PVE3 and PVHS are incorporated periodically for additional verification of the stability and recovery of the reference frame.

2D Horizontal & Vertical Movements for M48 to M49

In the attached “PB MOVEMENT DATA POSTING...” spreadsheet, the measured land movements are listed for the period and also for a normalized average month of 30.42 days for comparing the rates of movement for previous periods. This survey included 19 points and four reference points. For the stated period, the normalized movements vary and average about 0.9 feet with a maximum of 1.7 feet for an average month. The change in the rate of land movement (velocity) over the previous period slowed and varies from about -41% to -6% averaging about -19%. The attached spreadsheet “PB MOVEMENT DATA POSTING... .xlsx” lists the movement azimuths (directions clockwise from north) in degrees, the two-dimensional horizontal movements, and vertical (elevation) changes during the period in US Survey Feet. See also the column for the rate of movement for each period normalized for an average 30.42-day month.

Accuracy Statements

The horizontal (2D) vector residuals are estimated at 0.01 feet with a Standard Deviation of 0.01 feet and range 0.00 to 0.05’. The absolute value of the vertical vector residuals are estimated at 0.02 feet with a Standard Deviation of 0.02 feet, and range -0.06 to +0.08’.

The accuracy or uncertainty of the measured horizontal (2D) movements between two monitoring surveys is estimated to be 0.04’ at the 95% Level of Confidence. Movements less than the Confidence Level are statistically indeterminate. The estimated vertical measured movement confidence is about 0.05’ to 0.10’ depending on obstructions to satellite signals.

Monitoring Point Monument Notes & Descriptions

See prior Reports for existing point descriptions. See the attached spreadsheet file “PB MOVEMENT DATA POSTING... .xlsx” for California State Plane Coordinates Zone 5 in the NAD83 (2007) Epoch 2007.00 and elevations in the NAVD88 Datum.

Addendum No. 12 Report

Portuguese Bend Land Movement Monitoring Survey

Partial Monitoring Survey No. M50 – October 20, 2024

This is Partial Monitoring Survey No. M50 Addendum Report. The field survey took place October 20, 2024, 7 days or 0.23 months after the last M48 Monitoring Survey dated October 7, 2024. The survey included 19 monitoring points along PVDS and 4 reference control points (RP01, RP02, RP03 & PVE3RP). See the attached spreadsheet “PB MOVEMENT DATA POSTING... .xlsx” for the movements. This survey utilized the Smartnet RTN regional stations to measure vectors and determine the positions of monitoring points. This was to assess the accuracy of the RTN for monitoring in-lieu of the usual local base station. The results indicate a slightly larger uncertainty in the measurements. Subsequent surveys use the local base at RP02 procedure .

Network Adjustment & Analysis

A minimally constrained adjustment was processed to develop NAD83 (2007) Epoch 2007.00 CA Zone 5 State Plane Coordinates and NAVD88 Heights. A least squares network adjustment was fixed at point RP02 and a check was made to PVE3RP, RP01, and RP03 noted below. Differences from the known fixed positions to the measured positions by this survey are listed here with their north, east and vertical components in feet.

Differences in Feet				
ID	dN	dE	dZ	
PVE3RP	-0.03	0.05	0.07	Reference at City Hall
RP01	-0.05	0.00	-0.11	Check Point
RP02	-0.00	-0.00	-0.00	Fixed Base Station
RP03	-0.01	0.00	0.00	Check Point

Recovery and confirmation of a stable reference frame is essential to assess the actual movement of the monitoring points. The differences listed above are at the noise level of the measurements confirming a successful recovery of the reference frame.

2D Horizontal & Vertical Movements for M48 to M49

In the attached “PB MOVEMENT DATA POSTING...” spreadsheet, the measured land movements are listed for the period and also for a normalized average month of 30.42 days for comparing the rates of movement for previous periods. This survey included 19 points and four reference points. For the stated period, the general normalized movements vary and average about 0.8 feet with a maximum of 1.6 feet for an average month. The generalized change in the rate of land movement (velocity) over the previous period slowed and varies from about -26% to +22% averaging about -11%. The attached spreadsheet “PB MOVEMENT DATA POSTING... .xlsx” lists the movement azimuths (directions clockwise from north) in degrees, the two-dimensional horizontal movements, and vertical (elevation) changes during the period in US Survey Feet. See also the column for the rate of movement for each period normalized for an average 30.42-day month.

Accuracy Statements

The horizontal (2D) vector residuals are estimated at 0.01 feet with a Standard Deviation of 0.01 feet and range 0.01 to 0.03'. The absolute value of the vertical vector residuals are estimated at 0.03 feet with a Standard Deviation of 0.01 feet, and range -0.06 to +0.10'.

The accuracy or uncertainty of the measured horizontal (2D) movements between two monitoring surveys is estimated to be 0.05' at the 95% Level of Confidence. Movements less than the Confidence Level are statistically indeterminate. The estimated vertical measured movement confidence is about 0.05' to 0.10' depending on obstructions to satellite signals. “Deflection Analysis” and “Trend Analysis” are an alternate method for assessing uncertainties.

Monitoring Point Monument Notes & Descriptions

See prior Reports for existing point descriptions. See the attached spreadsheet file “PB MOVEMENT DATA POSTING....xlsx” for California State Plane Coordinates Zone 5 in the NAD83 (2007) Epoch 2007.00 and elevations in the NAVD88 Datum.

Addendum No. 13 Report

Portuguese Bend Land Movement Monitoring Survey

Full Monitoring Survey No. M51 – October 29, 2024

This is Full Monitoring Survey No. M51 Addendum Report. The field survey took place October 27-30, 2024, average date October 29, 2024, 0.23 months after M50 the last Partial Monitoring Survey and 0.69 months after M48 the last Full Monitoring Survey. The survey included 105 monitoring points and 4 reference control points (RP01, RP02, RP03 & PVE3RP). See the attached spreadsheet “PB MOVEMENT DATA POSTING... .xlsx” for the movements.

Network Adjustment & Analysis

A minimally constrained adjustment was processed to develop NAD83 (2007) Epoch 2007.00 CA Zone 5 State Plane Coordinates and NAVD88 Heights. A least squares network adjustment was fixed at point RP02 and a check was made to PVE3RP, RP01, and RP03 noted below. Differences from the known fixed positions to the measured positions by this survey are listed here with their north, east and vertical components in feet.

Differences in Feet				
ID	dN	dE	dZ	
PVE3RP	-0.01	-0.01	0.00	Reference at City Hall
RP01	-0.03	0.03	-0.02	Check Point
RP02	-0.00	-0.00	-0.00	Fixed Base Station
RP03	0.00	0.00	0.02	Check Point

Recovery and confirmation of a stable reference frame is essential to assess the actual movement of the monitoring points. The differences listed above are at the noise level of the measurements confirming a successful recovery of the reference frame.

2D Horizontal & Vertical Movements for M48 to M51

In the attached “PB MOVEMENT DATA POSTING...” spreadsheet, the measured land movements are listed for the period and also for a normalized average month of 30.42 days for comparing the rates of movement for previous periods. For the stated period, the general normalized movements of the 105 points excepting those with little or no movement detected vary and average about 1.2 feet with a maximum of 2.0 feet for an average month. The generalized change in the rate of land movement (velocity) over the previous period slowed and varies from about -90% to -21% averaging about -43%. The attached spreadsheet “PB MOVEMENT DATA POSTING... .xlsx” lists the movement azimuths (directions clockwise from north) in degrees, the two-dimensional horizontal movements, and vertical (elevation) changes during the period in US Survey Feet. See also the column for the rate of movement for each period normalized for an average 30.42-day month.

Accuracy Statements

The horizontal (2D) vector residuals are estimated at 0.01 feet with a Standard Deviation of 0.01 feet and range 0.00 to 0.06’. The absolute value of the vertical vector residuals are estimated at 0.02 feet with a Standard Deviation of 0.02 feet, and range -0.10 to +0.13’.

The accuracy or uncertainty of the measured horizontal (2D) movements between two monitoring surveys is estimated to be 0.04’ at the 95% Level of Confidence. Movements less than the Confidence Level are statistically indeterminate. The estimated vertical measured movement confidence is about 0.05’ to 0.10’.

depending on obstructions to satellite signals. “Deflection Analysis” and “Trend Analysis” are an alternate method for assessing uncertainties.

Monitoring Point Monument Notes & Descriptions

See prior Reports for existing point descriptions. See the attached spreadsheet file “PB MOVEMENT DATA POSTING.... .xlsx” for California State Plane Coordinates Zone 5 in the NAD83 (2007) Epoch 2007.00 and elevations in the NAVD88 Datum.

Addendum No. 14 Report

Portuguese Bend Land Movement Monitoring Survey

Partial Monitoring Survey No. M52 – November 5, 2024

This is Partial Monitoring Survey No. M52 Addendum Report. The field survey took place November 5, 2024, 9 days or 0.30 months after the last M51 Monitoring Survey dated October 27, 2024. The survey included 19 monitoring points along PVDS and 4 reference control points (RP01, RP02, RP03 & PVE3RP). See the attached spreadsheet “PB MOVEMENT DATA POSTING... .xlsx” for the movements. This survey utilized the Smartnet RTN regional stations to measure vectors and determine the positions of monitoring points. This was to assess the accuracy of the RTN for monitoring in-lieu of the usual local base station. The results indicate a slightly larger uncertainty in the measurements. Subsequent surveys use the procedure for a local base station at RP02.

Network Adjustment & Analysis

A minimally constrained adjustment was processed to develop NAD83 (2007) Epoch 2007.00 CA Zone 5 State Plane Coordinates and NAVD88 Heights. A least squares network adjustment was fixed at point RP02 and a check was made to PVE3RP, RP01, and RP03 noted below. Differences from the known fixed positions to the measured positions by this survey are listed here with their north, east and vertical components in feet.

Differences in Feet				
ID	dN	dE	dZ	
PVE3RP	-0.03	0.05	0.07	Reference at City Hall
RP01	-0.05	0.00	-0.11	Check Point
RP02	-0.00	-0.00	-0.00	Fixed Base Station
RP03	-0.01	0.00	0.00	Check Point

Recovery and confirmation of a stable reference frame is essential to assess the actual movement of the monitoring points. The differences listed above are at the noise level of the measurements confirming a successful recovery of the reference frame.

2D Horizontal & Vertical Movements for M51 to M52

In the attached “PB MOVEMENT DATA POSTING...” spreadsheet, the measured land movements are listed for the period and also for a normalized average month of 30.42 days for comparing the rates of movement for previous periods. This survey included 19 points and four reference points. For the stated period, the general normalized movements vary and average about 0.8 feet with a maximum of 1.6 feet for an average month. The generalized change in the rate of land movement (velocity) over the previous period slowed and varies from about -25% to +50 averaging about +13%. The attached spreadsheet “PB MOVEMENT DATA POSTING... .xlsx” lists the movement azimuths (directions clockwise from north) in degrees, the two-dimensional horizontal movements, and vertical (elevation) changes during the period in US Survey Feet. See also the column for the rate of movement for each period normalized for an average 30.42-day month.

Accuracy Statements

The horizontal (2D) vector residuals are estimated at 0.01 feet with a Standard Deviation of 0.02 feet. The absolute value of the vertical vector residuals are estimated at 0.03 feet with a Standard Deviation of 0.03 feet.

The accuracy or uncertainty of the measured horizontal (2D) movements between two monitoring surveys is estimated to be 0.04' at the 95% Level of Confidence. Movements less than the Confidence Level are statistically indeterminate. The estimated vertical measured movement confidence is about 0.05' to 0.10' depending on obstructions to satellite signals. "Deflection Analysis" and "Trend Analysis" are an alternate method for assessing uncertainties.

Monitoring Point Monument Notes & Descriptions

See prior Reports for existing point descriptions. See the attached spreadsheet file "PB MOVEMENT DATA POSTING....xlsx" for California State Plane Coordinates Zone 5 in the NAD83 (2007) Epoch 2007.00 and elevations in the NAVD88 Datum.

Addendum No. 15 Report

Portuguese Bend Land Movement Monitoring Survey

Partial Monitoring Survey No. M53 – November 13, 2024

This is Partial Monitoring Survey No. M53 Addendum Report. The field survey took place November 13, 2024, 8 days after the M52 Monitoring Survey dated November 5, 2024. The survey included 21 monitoring points and 4 reference control points with the movements listed in the attached spreadsheet "PB MOVEMENT DATA POSTING...xlsx". A new point AB81 was established west of AB58 along Narcissa Drive noted below.

Network Adjustment & Analysis

A minimally constrained adjustment was processed to develop NAD83 (2007) Epoch 2007.00 CA Zone 5 State Plane Coordinates and NAVD88 Heights. A least squares network adjustment was fixed at point RP02 and a check was made to PVE3RP, RP01, and RP03 noted below. Differences from the known fixed positions to the measured positions by this survey are listed here with their north, east and vertical components in feet.

Differences in Feet				
ID	dN	dE	dZ	
PVE3RP	-0.01	0.00	-0.01	Reference at City Hall
RP01	-0.02	0.00	-0.05	Check Point
RP02	-0.00	-0.00	-0.00	Fixed Base Station
RP03	-0.02	0.00	0.01	Check Point

Recovery and confirmation of a stable reference frame is essential to assess the actual movement of the monitoring points. The differences listed above are at the noise level of the measurements confirming a successful recovery of the reference frame.

2D Horizontal & Vertical Movements

In the attached "PB MOVEMENT DATA POSTING..." spreadsheet, the measured land movements are listed for the period M52-M53 and for a normalized average month of 30.42 days for comparing the rates of movement for previous periods. The attached spreadsheet lists the movement azimuths (directions clockwise from north) in degrees, the two-dimensional horizontal movements, and vertical (elevation) changes during the period in US Survey Feet.

This survey included 21 points, 19 of which have reported movements and 13 of which reported significant movements greater than the confidence level of uncertainty. For those 13 points for stated period, the general normalized movements vary and average about 0.8 feet with a maximum of 1.5 feet for an average month. The general change in the rate of land movement (velocity) over the previous period varies from about -34% to +16 averaging about -8%.

Accuracy Statements

The horizontal (2D) vector residuals are estimated at 0.01 feet with a Standard Deviation of 0.01 feet. The absolute value of the vertical vector residuals are estimated at 0.02 feet with a Standard Deviation of 0.01 feet.

The accuracy or uncertainty of the measured horizontal (2D) movements between two monitoring surveys is estimated to be 0.04' at the 95% Level of Confidence. Movements less than the Confidence Level are statistically indeterminate. The estimated vertical measured movement confidence is about 0.05' to 0.10' depending on obstructions to satellite signals.

Trend Assessment

“Trend Analysis” and “Deflection Analysis” are alternate methods for assessing actual movements. The movement accuracy is estimated at 0.04 feet at sites with minor obstructions to sky view. Movement directions consistent with the expected directions when comparing the periodic directions with the overall directions are indicative of actual movements. When the directions differing from the expectation for the slide and the overall movements and the movement distance approximates the estimated Confidence Level of the measurements, then no movement is deemed detected.

Monitoring Point Monument Notes & Descriptions

See prior Reports for existing point descriptions. See the attached spreadsheet file “PB MOVEMENT DATA POSTING.... .xlsx” for California State Plane Coordinates Zone 5 in the NAD83 (2007) Epoch 2007.00 and elevations in the NAVD88 Datum.

Point Description: Update of Set New Points

AB81 Set 2" Magnetic Nail drilled into concrete driveway south of Narcissa Drive

Addendum No. 16 Report

Portuguese Bend Land Movement Monitoring Survey Partial Monitoring Survey No. M54 – November 20, 2024

This is a Partial Monitoring Survey Addendum Report. The field survey took place November 20, 2024, 7 days after the previous Monitoring Survey. The survey included 19 monitoring points and 4 reference control points with the movements listed in the attached spreadsheet “PB MOVEMENT DATA POSTING... .xlsx”. This survey was utilized to validate the equipment (Trimble R12i GPS Receiver) and personnel for a takeover of the weekly field surveys by Shane Wolters of Epoch. MSC will continue to process the data and prepare reports. AB05 has not been accessible due to the slides and was included this one time to report it movement since 8/01/24. No data was available for PB70.

Network Adjustment & Analysis

A minimally constrained adjustment was processed to develop NAD83 (2007) Epoch 2007.00 CA Zone 5 State Plane Coordinates and NAVD88 Heights. A least squares network adjustment was fixed at point RP02 and a check was made to other network reference points noted below. Differences from the known fixed positions to the measured positions by this survey are listed here with their north, east and vertical components in feet.

Differences in Feet				
ID	dN	dE	dZ	
PVE3RP	-0.01	0.01	0.00	Reference at City Hall
RP01	0.01	-0.01	0.01	Check Point
RP02	0.00	0.00	0.00	Fixed Base Station

Recovery and confirmation of a stable reference frame is essential for assessing the actual movement of the monitoring points. The differences listed above are at the noise level of the measurements confirming a successful recovery of the reference frame.

2D Horizontal & Vertical Movements

In the attached “PB MOVEMENT DATA POSTING...” spreadsheet, the measured land movements are listed for the period M53-M54, and for a normalized average month of 30.42 days for comparing the rates of movement for previous periods. The attached spreadsheet lists the movement azimuths (directions clockwise from north) in degrees, the two-dimensional horizontal movements, and vertical (elevation) changes during the period in US Survey Feet.

This survey included 20 points, 13 of which reported movements greater than the confidence level. For the 13 points for the stated period, the general movements vary and average about 0.8 feet with a maximum of 1.7 feet normalized to an average month. The generally, the change in the rate of land movement (velocity) over the previous period varied from about -36% to +16 averaging about -5%.

Accuracy Statements

The horizontal (2D) vector residuals are estimated at 0.01 feet with a Standard Deviation of 0.01 feet and a range of 0.00 to 0.05 feet. The absolute value of the vertical vector residuals are estimated at 0.02 feet with a Standard Deviation of 0.01 feet and a range of -0.01 to +0.04 feet.

The accuracy or uncertainty of the measured horizontal (2D) movements between two monitoring surveys is estimated to be 0.04’ at the 95% Level of Confidence. Movements less than the Confidence Level are statistically indeterminate. The estimated vertical measured movement confidence is about 0.05’ to 0.10’ depending on obstructions to satellite signals.

Trend Assessment

“Trend Analysis” and “Deflection Analysis” are alternate methods for assessing actual movements. The movement accuracy is estimated at 0.04 feet at sites with minor obstructions to sky view. Movement directions consistent with the expected directions when comparing the periodic directions with the overall directions are indicative of actual movements. When the directions differing from the expectation for the slide and the overall movements and the movement distance approximates the estimated Confidence Level of the measurements, then no movement is deemed detected.

Monitoring Point Monument Notes & Descriptions

See prior Reports for existing point descriptions. See the attached spreadsheet file “PB MOVEMENT DATA POSTING.... .xlsx” for California State Plane Coordinates Zone 5 in the NAD83 (2007) Epoch 2007.00 and elevations in the NAVD88 Datum.

Addendum No. 17 Report

Portuguese Bend Land Movement Monitoring Survey Partial Monitoring Survey No. M55 – November 27, 2024

This is a Partial Monitoring Survey Addendum Report. The field survey took place November 27, 2024, 7 days after the previous Monitoring Survey. The survey included 20 monitoring points and 4 reference control points with the movements listed in the attached spreadsheet “PB MOVEMENT DATA POSTING... .xlsx”. Shane Wolters of Epoch performed the field work for this survey and will continue with the Partial and the monthly Full Surveys usually on Wednesdays for the upper Reserve area. MSC, for now, continues to process the observations and produce the Reports.

Network Adjustment & Analysis

A minimally constrained adjustment was processed to develop NAD83 (2007) Epoch 2007.00 CA Zone 5 State Plane Coordinates and NAVD88 Heights. A least squares network adjustment was fixed at point RP02 and a

check was made to other network reference points noted below. Differences from the known fixed positions to the measured positions by this survey are listed here with their north, east and vertical components in feet.

Differences in Feet

ID	dN	dE	dZ	
PVE3RP	0.01	0.04	0.00	Reference at City Hall
RP01	-0.02	0.02	0.02	Check Point
RP02	0.00	0.00	0.00	Fixed Base Station

Recovery and confirmation of a stable reference frame is essential for assessing the actual movement of the monitoring points. The differences listed above are at the noise level of the measurements confirming a successful recovery of the reference frame.

2D Horizontal & Vertical Movements

In the attached “PB MOVEMENT DATA POSTING...” spreadsheet, the measured land movements are listed for the period M54-M55, and for a normalized average month of 30.42 days for comparing the rates of movement for previous periods. The attached spreadsheet lists the movement azimuths (directions clockwise from north) in degrees, the two-dimensional horizontal movements, and vertical (elevation) changes during the period in US Survey Feet.

This survey included 20 points, 14 of which reported movements greater than the confidence level. For the 14 points for the stated period, the general movements vary and average about 0.9 feet with a maximum of 1.8 feet normalized to an average month. The generally, the change in the rate of land movement (velocity) over the previous period varied from about -14% to +35 averaging about +9%.

Accuracy Statements

The horizontal (2D) vector residuals are estimated at 0.02 feet with a Standard Deviation of 0.01 feet and a range of 0.00 to 0.04 feet. The absolute value of the vertical vector residuals are estimated at 0.01 feet with a Standard Deviation of 0.01 feet and a range of -0.03 to +0.01 feet.

The accuracy or uncertainty of the measured horizontal (2D) movements between two monitoring surveys is estimated to be 0.04’ at the 95% Level of Confidence. Movements less than the Confidence Level are statistically indeterminate. The estimated vertical measured movement confidence is about 0.05’ to 0.10’ depending on obstructions to satellite signals.

Trend Assessment

“Trend Analysis” and “Deflection Analysis” are alternate methods for assessing actual movements. The movement accuracy is estimated at 0.04 feet at sites with minor obstructions to sky view. Movement directions consistent with the expected directions when comparing the periodic directions with the overall directions are indicative of actual movements. When the directions differing from the expectation for the slide and the overall movements and the movement distance approximates the estimated Confidence Level of the measurements, then no movement is deemed detected.

Monitoring Point Monument Notes & Descriptions

See prior Reports for existing point descriptions. See the attached spreadsheet file “PB MOVEMENT DATA POSTING.... .xlsx” for California State Plane Coordinates Zone 5 in the NAD83 (2007) Epoch 2007.00 and elevations in the NAVD88 Datum.

Addendum No. 18

Report Portuguese Bend Land Movement Monitoring Survey Full Monitoring Survey No. M56 – December 3, 2024

This is a Full Monitoring Survey Addendum Report. The field survey took place December 3, 2024, 35 days after the previous Full Monitoring Survey and six days after the previous Partial Monitoring Survey. The survey included 105 monitoring points and 5 reference control points with the movements listed in the attached spreadsheet “PB MOVEMENT DATA POSTING... .xlsx”. Shane Wolters of Epoch performed the field work for the upper Reserve area and MSC processed the observations and produced the Reports. PB71 was destroyed by the slide in November; however, a reference marker “PB71RP” had been previously established 40 feet ENE to avoid any discontinuity in the reporting. CR55 was reported after four months and verifying no movement has occurred. Note, CR55A, 500’ westerly, is a substitute for CR55 and will continue to be monitored.

Network Adjustment & Analysis

A minimally constrained adjustment was processed to develop NAD83 (2007) Epoch 2007.00 CA Zone 5 State Plane Coordinates and NAVD88 Heights. A least squares network adjustment was fixed at point RP02 and a check was made to other network reference points noted below. Differences from the known fixed positions to the measured positions by this survey are listed here with their north, east and vertical components in feet.

Differences in Feet

ID	dN	dE	dZ	
PVE3RP	0.00	0.01	0.01	Reference at City Hall
RP01	-0.01	0.01	0.01	Check Point
RP02	0.00	0.00	0.00	Fixed Base Station
RP03	-0.01	0.01	0.01	Check Point

Recovery and confirmation of a stable reference frame is essential for assessing the actual movement of the monitoring points. The differences listed above are at the noise level of the measurements confirming a successful recovery of the reference frame.

2D Horizontal & Vertical Movements

In the attached “PB MOVEMENT DATA POSTING...” spreadsheet, the measured land movements are listed for the period M51-M56 (Full Monitoring), and for a normalized average month of 30.42 days for comparing the rates of movement for previous Full Monitoring periods. The measured land movements are also listed for the period M55-M56 (Partial Monitoring), and for a normalized average month of 30.42 days for comparing the rates of movement for previous Partial Monitoring periods. The attached spreadsheet lists the movement azimuths (directions clockwise from north) in degrees, the two-dimensional horizontal movements, and vertical (elevation) changes during the period in US Survey Feet.

This survey included 105 points, 64 of which in the Full Monitoring period reported movements greater than the confidence level. For the 64 points for the stated period, the general movements vary and average about 1.0 foot with a maximum of 2.0 feet normalized to an average month. The generally, the change in the rate of land movement (velocity) over the previous period varied from about -22% to +37 averaging about +2%.

Accuracy Statements

The horizontal (2D) vector residuals are estimated at 0.01 feet with a Standard Deviation of 0.01 feet and a range of 0.00 to 0.03 feet. The absolute value of the vertical vector residuals are estimated at 0.01 feet with a Standard Deviation of 0.01 feet and a range of -0.03 to +0.04 feet.

The accuracy or uncertainty of the measured horizontal (2D) movements between two monitoring surveys is estimated to be 0.04’ at the 95% Level of Confidence. Movements less than the Confidence Level are statistically indeterminate. The estimated vertical measured movement confidence is about 0.05’ to 0.10’ depending on obstructions to satellite signals.

Trend Assessment

“Trend Analysis” and “Deflection Analysis” are alternate methods for assessing actual movements. The movement accuracy is estimated at 0.04 feet at sites with minor obstructions to sky view. Movement directions consistent with the expected directions when comparing the periodic directions with the overall directions are indicative of actual movements. When the directions differing from the expectation for the slide and the overall movements and the movement distance approximates the estimated Confidence Level of the measurements, then no movement is deemed detected.

Monitoring Point Monument Notes & Descriptions

See prior Reports for existing point descriptions. See the attached spreadsheet file “PB MOVEMENT DATA POSTING.... .xlsx” for California State Plane Coordinates Zone 5 in the NAD83 (2007) Epoch 2007.00 and elevations in the NAVD88 Datum.

Point Description: Update of Set Points

PB71 Destroyed

Addendum No. 19

Report Portuguese Bend Land Movement Monitoring Survey Partial Monitoring Survey No. M57 – December 11, 2024

This is a Partial Monitoring Survey Addendum Report. The field survey took place December 11, 2024, 8 days after the previous Monitoring Survey. The survey included 20 monitoring points and 4 reference control points with the movements listed in the attached spreadsheet “PB MOVEMENT DATA POSTING... .xlsx”. Shane Wolters of Epoch performed the field work for this Partial Monitoring Survey and MSC processed the observations and produced the Reports.

Network Adjustment & Analysis

A minimally constrained adjustment was processed to develop NAD83 (2007) Epoch 2007.00 CA Zone 5 State Plane Coordinates and NAVD88 Heights. A least squares network adjustment was fixed at point RP02 and a check was made to other network reference points noted below. Differences from the known fixed positions to the measured positions by this survey are listed here with their north, east and vertical components in feet.

ID	Differences in Feet			
	dN	dE	dZ	
PVE3RP	-0.01	0.00	-0.02	Reference at City Hall
RP01	-0.01	0.00	-0.07	Check Point
RP02	0.00	0.00	0.00	Fixed Base Station
RP03	0.00	0.01	-0.01	Check Point

Recovery and confirmation of a stable reference frame is essential for assessing the actual movement of the monitoring points. The differences listed above are at the noise level of the measurements confirming a successful recovery of the reference frame.

2D Horizontal & Vertical Movements

In the attached “PB MOVEMENT DATA POSTING...” spreadsheet, the measured land movements are listed for the period M56-M57, and for a normalized average month of 30.42 days for comparing the rates of movement for previous periods. The attached spreadsheet lists the movement azimuths (directions clockwise from north) in degrees, the two-dimensional horizontal movements, and vertical (elevation) changes during the period in US Survey Feet.

This survey included 20 points, 13 of which reported movements greater than the confidence level. For the 13 points for the stated period, the general movements vary and average about 0.8 feet with a maximum of 1.6 feet

normalized to an average month. The generally, the change in the rate of land movement (velocity) over the previous period varied from about -49% to +17 averaging about -17%.

Accuracy Statements

The horizontal (2D) vector residuals are estimated at 0.01 feet with a Standard Deviation of 0.01 feet and a range of 0.00 to 0.04 feet. The absolute value of the vertical vector residuals are estimated at 0.01 feet with a Standard Deviation of 0.01 feet and a range of -0.02 to +0.03 feet.

The accuracy or uncertainty of the measured horizontal (2D) movements between two monitoring surveys is estimated to be 0.04' at the 95% Level of Confidence. Movements less than the Confidence Level are statistically indeterminate. The estimated vertical measured movement confidence is about 0.05' to 0.10' depending on obstructions to satellite signals.

Trend Assessment

“Trend Analysis” and “Deflection Analysis” are alternate methods for assessing actual movements. The movement accuracy is estimated at 0.04 feet at sites with minor obstructions to sky view. Movement directions consistent with the expected directions when comparing the periodic directions with the overall directions are indicative of actual movements. When the directions differing from the expectation for the slide and the overall movements and the movement distance approximates the estimated Confidence Level of the measurements, then no movement is deemed detected.

Monitoring Point Monument Notes & Descriptions

See prior Reports for existing point descriptions. See the attached spreadsheet file “PB MOVEMENT DATA POSTING....xlsx” for California State Plane Coordinates Zone 5 in the NAD83 (2007) Epoch 2007.00 and elevations in the NAVD88 Datum.

Addendum No. 20

Report Portuguese Bend Land Movement Monitoring Survey Partial Monitoring Survey No. M58 – December 18, 2024

This is a Partial Monitoring Survey Addendum Report. The field survey took place December 18, 2024, 7 days after the previous Monitoring Survey. The survey included 20 monitoring points and 4 reference control points with the movements listed in the attached spreadsheet “PB MOVEMENT DATA POSTING... .xlsx”. Shane Wolters of Epoch performed the field work for this Partial Monitoring Survey and MSC processed the observations and produced the Reports.

Network Adjustment & Analysis

A minimally constrained adjustment was processed to develop NAD83 (2007) Epoch 2007.00 CA Zone 5 State Plane Coordinates and NAVD88 Heights. A least squares network adjustment was fixed at point RP02 and a check was made to other network reference points noted below. Differences from the known fixed positions to the measured positions by this survey are listed here with their north, east and vertical components in feet.

Differences in Feet				
ID	dN	dE	dZ	
PVE3RP	0.00	0.00	-0.04	Reference at City Hall
RP01	0.01	-0.01	-0.05	Check Point
RP02	0.00	0.00	0.00	Fixed Base Station
RP03	0.00	0.02	-0.01	Check Point

Recovery and confirmation of a stable reference frame is essential for assessing the actual movement of the monitoring points. The differences listed above are at the noise level of the measurements confirming a successful recovery of the reference frame.

2D Horizontal & Vertical Movements

In the attached “PB MOVEMENT DATA POSTING...” spreadsheet, the measured land movements are listed for the period M56-M57, and for a normalized average month of 30.42 days for comparing the rates of movement for previous periods. The attached spreadsheet lists the movement azimuths (directions clockwise from north) in degrees, the two-dimensional horizontal movements, and vertical (elevation) changes during the period in US Survey Feet.

This survey included 20 points, 14 of which reported movements greater than the confidence level. For the 14 points for the stated period, the general movements normalized to an average month vary and average about 0.8 feet with a maximum of 1.7 feet; the general change in the rate of land movement (velocity) for the same period varied from about -10% to +35 averaging about +10%. Note, these values are derived by normalizing the weekly movements to an average month which is less accurate due to the propagation of the uncertainty compared with observations over a monthly period.

Accuracy Statements

The horizontal (2D) vector residuals are estimated at 0.01 feet with a Standard Deviation of 0.01 feet and a range of 0.00 to 0.05 feet. The absolute value of the vertical vector residuals are estimated at 0.01 feet with a Standard Deviation of 0.01 feet and a range of -0.04 to +0.09 feet.

The accuracy or uncertainty of the measured horizontal (2D) movements between two monitoring surveys is estimated to be 0.04’ at the 95% Level of Confidence. Movements less than the Confidence Level are statistically indeterminate. The estimated vertical measured movement confidence is about 0.05’ to 0.10’ depending on obstructions to satellite signals.

Trend Assessment

“Trend Analysis” and “Deflection Analysis” are alternate methods for assessing actual movements. The movement accuracy is estimated at 0.04 feet at sites with minor obstructions to sky view. Movement directions consistent with the expected directions when comparing the “periodic” directions with the “overall” directions are indicative of actual movements. When the directions differing from the expectation for the slide and the overall movements and the movement distance approximates the estimated Confidence Level of the measurements, then no movement is deemed detected.

Monitoring Point Monument Notes & Descriptions

See prior Reports for existing point descriptions. See the attached spreadsheet file “PB MOVEMENT DATA POSTING.... .xlsx” for California State Plane Coordinates Zone 5 in the NAD83 (2007) Epoch 2007.00 and elevations in the NAVD88 Datum.

Addendum No. 21

Report Portuguese Bend Land Movement Monitoring Survey Partial Monitoring Survey No. M59 – December 27, 2024

This is a Partial Monitoring Survey Addendum Report. The field survey took place December 27, 2024, 9 days after the previous Monitoring Survey. The survey included 23 monitoring points and 5 reference control points with the movements listed in the attached spreadsheet “PB MOVEMENT DATA POSTING... .xlsx”. Epoch performed the field work for this Partial Monitoring Survey and MSC processed the observations and produced the Reports.

Network Adjustment & Analysis

A minimally constrained adjustment was processed to develop NAD83 (2007) Epoch 2007.00 CA Zone 5 State Plane Coordinates and NAVD88 Heights. A least squares network adjustment was fixed at point RP02 and a

check was made to other network reference points noted below. Differences from the known fixed positions to the measured positions by this survey are listed here with their north, east and vertical components in feet.

Differences in Feet

<u>ID</u>	<u>dN</u>	<u>dE</u>	<u>dZ</u>	
PVE3RP	0.02	-0.02	-0.01	Reference at City Hall
RP01	0.02	0.01	0.02	Check Point
RP02	0.00	0.00	0.00	Fixed Base Station
RP03	-0.01	0.01	0.00	Check Point

Recovery and confirmation of a stable reference frame is essential for assessing the actual movement of the monitoring points. The differences listed above are at the noise level of the measurements confirming a successful recovery of the reference frame.

2D Horizontal & Vertical Movements

In the attached “PB MOVEMENT DATA POSTING...” spreadsheet, the measured land movements are listed for the referenced period, and for a normalized average month of 30.42 days, for comparing the rates of movement with previous periods. The attached spreadsheet lists the movement azimuths (directions clockwise from north) in degrees, the two-dimensional horizontal movements, and vertical (elevation) changes during the period in US Survey Feet.

This survey included 23 points, 17 of which reported movements greater than the confidence level. For those points, for the stated period, the general movements normalized to an average month vary and average about 0.8 feet with a maximum of 1.6 feet; the general change in the rate of land movement (velocity) for the same period varied from about -3% to +83 averaging about +23%. Note, these values are derived by normalizing the weekly movements to an average month which is less accurate due to the propagation of the uncertainty compared with observations over a monthly period.

Accuracy Statements

The horizontal (2D) vector residuals are estimated at 0.01 feet with a Standard Deviation of 0.01 feet and a range of 0.00 to 0.05 feet. The absolute value of the vertical vector residuals are estimated at 0.01 feet with a Standard Deviation of 0.01 feet and a range of -0.05 to +0.06 feet.

The accuracy or uncertainty of the measured horizontal (2D) movements between two monitoring surveys is estimated to be 0.04' at the 95% Level of Confidence. Movements less than the Confidence Level are statistically indeterminate. The estimated vertical measured movement confidence is about 0.05' to 0.10' depending on obstructions to satellite signals.

Trend Assessment

“Trend Analysis” and “Deflection Analysis” are alternate methods for assessing actual movements. The movement accuracy is estimated at 0.04 feet at sites with minor obstructions to sky view. Movement directions consistent with the expected directions when comparing the “periodic” directions with the “overall” directions are indicative of actual movements. When the directions differing from the expectation for the slide and the overall movements and the movement distance approximates the estimated Confidence Level of the measurements, then no movement is deemed detected.

Monitoring Point Monument Notes & Descriptions

See prior Reports for existing point descriptions. See the attached spreadsheet file “PB MOVEMENT DATA POSTING.... .xlsx” for California State Plane Coordinates Zone 5 in the NAD83 (2007) Epoch 2007.00 and elevations in the NAVD88 Datum.

Addendum No. 22

Report Portuguese Bend Land Movement Monitoring Survey Full Monitoring Survey No. M60 – January 07, 2025

This is a Full Monitoring Survey Addendum Report. The field survey took place January 07, 2025, 35 days after the previous Full Monitoring Survey M56 and 11 days after the previous Partial Monitoring Survey M59. The survey included 102 monitoring points and 5 reference control points with the movements listed in the attached spreadsheet “PB MOVEMENT DATA POSTING... .xlsx”. Shane Wolters of Epoch performed the field work for the upper Reserve area and MSC performed the field work for the remainder of Portuguese Bend Network, processed the observations, and produced the Reports. PB74 was destroyed by grading thus no movement is reported for this location for M60. The monument was reset about 25’ westerly now known as PB77.

Network Adjustment & Analysis

A minimally constrained adjustment was processed to develop NAD83 (2007) Epoch 2007.00 CA Zone 5 State Plane Coordinates and NAVD88 Heights. A least squares network adjustment was fixed at point RP02 and a check was made to other network reference points noted below. Differences from the known fixed positions to the measured positions by this survey are listed here with their north, east and vertical components in feet.

Differences in Feet				
ID	dN	dE	dZ	
PVE3RP	0.01	-0.01	-0.01	Reference at City Hall
RP01	-0.01	0.01	-0.01	Check Point
RP02	0.00	0.00	0.00	Fixed Base Station
RP03	-0.01	0.00	0.01	Check Point
RP05	0.00	-0.01	0.00	Check Point

Recovery and confirmation of a stable reference frame is essential for assessing the actual movement of the monitoring points. The differences listed above are at the noise level of the measurements confirming a successful recovery of the reference frame.

2D Horizontal & Vertical Movements

In the attached “PB MOVEMENT DATA POSTING...” spreadsheet, the measured land movements are listed for the Full Monitoring period M56-M60, for the Partial Monitoring period M59-M60, and for a normalized average month of 30.42 days for comparing the rates of movement for previous periods. The attached spreadsheet lists the movement azimuths (directions clockwise from north) in degrees, the two-dimensional horizontal movements, and vertical (elevation) changes during the period in US Survey Feet.

This survey included 102 points, 60 of which in the Full Monitoring period reported movements greater than the confidence level. For the 60 points for the stated period, the general movements vary and average about 1.1 foot with a maximum of 1.9 feet normalized to an average month. The generally, the change in the rate of land movement (velocity) over the previous period varied from about -29% to +18 averaging about -3%.

Accuracy Statements

The horizontal (2D) vector residuals are estimated at 0.01 feet with a Standard Deviation of 0.01 feet and a range of 0.00 to 0.03 feet. The absolute value of the vertical vector residuals are estimated at 0.02 feet with a Standard Deviation of 0.02 feet and a range of -0.04 to +0.08 feet.

The accuracy or uncertainty of the measured horizontal (2D) movements between two monitoring surveys is estimated to be 0.04’ at the 95% Level of Confidence. Movements less than the Confidence Level are statistically indeterminate. The estimated vertical measured movement confidence is about 0.05’ to 0.10’ depending on obstructions to satellite signals.

Trend Assessment

“Trend Analysis” and “Deflection Analysis” are alternate methods for assessing actual movements. The movement accuracy is estimated at 0.04 feet at sites with minor obstructions to sky view. Movement directions consistent with the expected directions when comparing the periodic directions with the overall directions are indicative of actual movements. When the directions differing from the expectation for the slide and the overall movements and the movement distance approximates the estimated Confidence Level of the measurements, then no movement is deemed detected.

Monitoring Point Monument Notes & Descriptions

See prior Reports for existing point descriptions. See the attached spreadsheet file “PB MOVEMENT DATA POSTING....xlsx” for California State Plane Coordinates Zone 5 in the NAD83 (2007) Epoch 2007.00 and elevations in the NAVD88 Datum.

Point Description: Update of Points set in April & May

AB74 Destroyed
AB77 1/2" x 4' rebar encased in concrete witnessed by a steel t-bar post
RP05 Found Plastic Plug/tack "MB_" about 100' westerly of RP02. Adopted as a Reference Point.

Addendum No. 23

Report Portuguese Bend Land Movement Monitoring Survey Partial Monitoring Survey No. M61 – January 15, 2025

This is a Partial Monitoring Survey Addendum Report. The field survey took place January 15, 2025, 8 days after the previous Monitoring Survey. The survey included 23 monitoring points and 5 reference control points with the movements listed in the attached spreadsheet “PB MOVEMENT DATA POSTING...xlsx”. Epoch performed the field work for this Partial Monitoring Survey and MSC processed the observations and produced the Reports. Point PB74 was found destroyed and PB77 was set as a replacement.

Network Adjustment & Analysis

A minimally constrained adjustment was processed to develop NAD83 (2007) Epoch 2007.00 CA Zone 5 State Plane Coordinates and NAVD88 Heights. A least squares network adjustment was fixed at point RP02 and a check was made to other network reference points noted below. Differences from the known fixed positions to the measured positions by this survey are listed here with their north, east and vertical components in feet.

Differences in Feet

ID	dN	dE	dZ	
PVE3RP	0.02	-0.02	-0.05	Reference at City Hall
RP01	0.01	0.00	-0.01	Check Point
RP02	0.00	0.00	0.00	Fixed Base Station
RP03	0.00	0.02	-0.02	Check Point
RP05	0.00	0.00	0.00	Check Point

Recovery and confirmation of a stable reference frame is essential for assessing the actual movement of the monitoring points. The differences listed above are at the noise level of the measurements confirming a successful recovery of the reference frame.

2D Horizontal & Vertical Movements

In the attached “PB MOVEMENT DATA POSTING...” spreadsheet, the measured land movements are listed for the referenced period, and for a normalized average month of 30.42 days, for comparing the rates of movement with previous periods. The attached spreadsheet lists the movement azimuths (directions clockwise from north) in degrees, the two-dimensional horizontal movements, and vertical (elevation) changes during the period in US Survey Feet.

This survey included 23 points, 18 of which reported movements greater than the confidence level. For those points, for the stated period, the general movements normalized to an average month vary and average about 0.8 feet with a maximum of 1.5 feet; the general change in the rate of land movement (velocity) for the same period varied from about -38% to +4 averaging about -7%. Note, these values are derived by normalizing the weekly movements to an average month which is less accurate due to the propagation of the uncertainty compared with observations over a monthly period.

Accuracy Statements

The horizontal (2D) vector residuals are estimated at 0.01 feet with a Standard Deviation of 0.01 feet and a range of 0.00 to 0.02 feet. The absolute value of the vertical vector residuals are estimated at 0.01 feet with a Standard Deviation of 0.01 feet and a range of -0.02 to +0.04 feet.

The accuracy or uncertainty of the measured horizontal (2D) movements between two monitoring surveys is estimated to be 0.04' at the 95% Level of Confidence. Movements less than the Confidence Level are statistically indeterminate. The estimated vertical measured movement confidence is about 0.05' to 0.10' depending on obstructions to satellite signals.

Trend Assessment

"Trend Analysis" and "Deflection Analysis" are alternate methods for assessing actual movements. The movement accuracy is estimated at 0.04 feet at sites with minor obstructions to sky view. Movement directions consistent with the expected directions when comparing the "periodic" directions with the "overall" directions are indicative of actual movements. When the directions differing from the expectation for the slide and the overall movements and the movement distance approximates the estimated Confidence Level of the measurements, then no movement is deemed detected.

Monitoring Point Monument Notes & Descriptions

See prior Reports for existing point descriptions. See the attached spreadsheet file "PB MOVEMENT DATA POSTING.... .xlsx" for California State Plane Coordinates Zone 5 in the NAD83 (2007) Epoch 2007.00 and elevations in the NAVD88 Datum.

Addendum No. 24

Report Portuguese Bend Land Movement Monitoring Survey Partial Monitoring Survey No. M62 – January 22, 2025

This is a Partial Monitoring Survey Addendum Report. The field survey took place January 22, 2025, 7 days after the previous Monitoring Survey. The survey included 23 monitoring points and 5 reference control points with the movements listed in the attached spreadsheet "PB MOVEMENT DATA POSTING... .xlsx". Epoch performed the field work for this Partial Monitoring Survey and MSC processed the observations and produced the Reports.

Network Adjustment & Analysis

A minimally constrained adjustment was processed to develop NAD83 (2007) Epoch 2007.00 CA Zone 5 State Plane Coordinates and NAVD88 Heights. A least squares network adjustment was fixed at point RP02 and a check was made to other network reference points noted below. Differences from the known fixed positions to the measured positions by this survey are listed here with their north, east and vertical components in feet.

Differences in Feet				
ID	dN	dE	dZ	
PVE3RP	-0.01	0.00	-0.04	Reference at City Hall
RP01	0.00	-0.01	-0.06	Check Point
RP02	0.00	0.00	0.00	Fixed Base Station
RP03	0.00	0.02	0.00	Check Point
RP05	0.01	0.00	0.00	Check Point

Recovery and confirmation of a stable reference frame is essential for assessing the actual movement of the monitoring points. The differences listed above are at the noise level of the measurements confirming a successful recovery of the reference frame.

2D Horizontal & Vertical Movements

In the attached “PB MOVEMENT DATA POSTING...” spreadsheet, the measured land movements are listed for the referenced period, and for a normalized average month of 30.42 days, for comparing the rates of movement with previous periods. The attached spreadsheet lists the movement azimuths (directions clockwise from north) in degrees, the two-dimensional horizontal movements, and vertical (elevation) changes during the period in US Survey Feet.

This survey included 23 points, 18 of which reported movements greater than the confidence level. For those points, for the stated period, the general movements normalized to an average month vary and average about 0.9 feet with a maximum of 1.6 feet; the general change in the rate of land movement (velocity) for the same period varied from about -38% to +4 averaging about +13%. Note, these values are derived by normalizing the weekly movements to an average month which is less accurate due to the propagation of the uncertainty compared with observations over a monthly period.

Accuracy Statements

The horizontal (2D) vector residuals are estimated at 0.01 feet with a Standard Deviation of 0.01 feet and a range of 0.00 to 0.04 feet. The absolute value of the vertical vector residuals are estimated at 0.01 feet with a Standard Deviation of 0.01 feet and a range of -0.03 to +0.01 feet.

The accuracy or uncertainty of the measured horizontal (2D) movements between two monitoring surveys is estimated to be 0.04' at the 95% Level of Confidence. Movements less than the Confidence Level are statistically indeterminate. The estimated vertical measured movement confidence is about 0.05' to 0.10' depending on obstructions to satellite signals.

Trend Assessment

“Trend Analysis” and “Deflection Analysis” are alternate methods for assessing actual movements. The movement accuracy is estimated at 0.04 feet at sites with minor obstructions to sky view. Movement directions consistent with the expected directions when comparing the “periodic” directions with the “overall” directions are indicative of actual movements. When the directions differing from the expectation for the slide and the overall movements and the movement distance approximates the estimated Confidence Level of the measurements, then no movement is deemed detected.

Monitoring Point Monument Notes & Descriptions

See prior Reports for existing point descriptions. See the attached spreadsheet file “PB MOVEMENT DATA POSTING.... .xlsx” for California State Plane Coordinates Zone 5 in the NAD83 (2007) Epoch 2007.00 and elevations in the NAVD88 Datum.

Addendum No. 25

Report Portuguese Bend Land Movement Monitoring Survey Partial Monitoring Survey No. M63 – January 29, 2025

This is a Partial Monitoring Survey Addendum Report. The field survey took place January 29, 2025, 7 days after the previous Monitoring Survey. The survey included 23 monitoring points and 5 reference control points with the movements listed in the attached spreadsheet “PB MOVEMENT DATA POSTING... .xlsx”. Epoch performed the field work for this Partial Monitoring Survey and MSC processed the observations and produced the Reports.

Network Adjustment & Analysis

A minimally constrained adjustment was processed to develop NAD83 (2007) Epoch 2007.00 CA Zone 5 State Plane Coordinates and NAVD88 Heights. A least squares network adjustment was fixed at point RP02 and a check was made to other network reference points noted below. Differences from the known fixed positions to the measured positions by this survey are listed here with their north, east and vertical components in feet.

Differences in Feet

ID	dN	dE	dZ	
PVE3RP	0.03	0.00	-0.01	Reference at City Hall
RP01	0.02	0.01	0.00	Check Point
RP02	0.00	0.00	0.00	Fixed Base Station
RP03	0.00	0.02	-0.01	Check Point
RP05	0.02	0.00	0.01	Check Point

Recovery and confirmation of a stable reference frame is essential for assessing the actual movement of the monitoring points. The differences listed above are at the noise level of the measurements confirming a successful recovery of the reference frame.

2D Horizontal & Vertical Movements

In the attached “PB MOVEMENT DATA POSTING...” spreadsheet, the measured land movements are listed for the referenced period, and for a normalized average month of 30.42 days, for comparing the rates of movement with previous periods. The attached spreadsheet lists the movement azimuths (directions clockwise from north) in degrees, the two-dimensional horizontal movements, and vertical (elevation) changes during the period in US Survey Feet.

This survey included 23 points, 17 of which reported movements greater than the confidence level. For those points, for the stated period, the general movements normalized to an average month vary and average about 0.9 feet with a maximum of 1.6 feet; the general change in the rate of land movement (velocity) for the same period varied from about -44% to +25 averaging about -7%. Note, these values are derived by normalizing the weekly movements to an average month which is less accurate due to the propagation of the uncertainty compared with observations over a monthly period.

Accuracy Statements

The horizontal (2D) vector residuals are estimated at 0.01 feet with a Standard Deviation of 0.01 feet and a range of 0.00 to 0.04 feet. The absolute value of the vertical vector residuals are estimated at 0.02 feet with a Standard Deviation of 0.02 feet and a range of -0.02 to +0.05 feet.

The accuracy or uncertainty of the measured horizontal (2D) movements between two monitoring surveys is estimated to be 0.04' at the 95% Level of Confidence. The confidence level for a weekly measurement normalized to a monthly is about 0.10 feet. Movements less than the Confidence Level are statistically indeterminate. The estimated vertical measured movement confidence is about 0.05' to 0.10' depending on obstructions to satellite signals.

Trend Assessment

“Trend Analysis” and “Deflection Analysis” are alternate methods for assessing actual movements. The movement accuracy is estimated at 0.04 feet at sites with minor obstructions to sky view. Movement directions consistent with the expected directions when comparing the “periodic” directions with the “overall” directions are indicative of actual movements. When the directions differing from the expectation for the slide and the overall movements and the movement distance approximates the estimated Confidence Level of the measurements, then no movement is deemed detected.

Monitoring Point Monument Notes & Descriptions

See prior Reports for existing point descriptions. See the attached spreadsheet file “PB MOVEMENT DATA POSTING.... .xlsx” for California State Plane Coordinates Zone 5 in the NAD83 (2007) Epoch 2007.00 and elevations in the NAVD88 Datum.

Addendum No. 26

Report Portuguese Bend Land Movement Monitoring Survey Full Monitoring Survey No. M64 – February 3, 2025

This is a Full Monitoring Survey Addendum Report. The field survey took place February 3, 2025, 27 days after the previous Full Monitoring Survey M60 and 5 days after the previous Partial Monitoring Survey M63. The survey included 101 monitoring points and 5 reference control points with the movements listed in the attached spreadsheet “PB MOVEMENT DATA POSTING... .xlsx”. Shane Wolters of Epoch performed the field work for the upper Reserve area and MSC performed the field work for the remainder of Portuguese Bend Network, processed the observations, and produced the Reports. AB78 was disturbed, ignore the reported movement until the next Full Monitoring measurement. KC38 was destroyed by wave action.

Network Adjustment & Analysis

A minimally constrained adjustment was processed to develop NAD83 (2007) Epoch 2007.00 CA Zone 5 State Plane Coordinates and NAVD88 Heights. A least squares network adjustment was fixed at point RP02 and a check was made to other network reference points noted below. Differences from the known fixed positions to the measured positions by this survey are listed here with their north, east and vertical components in feet.

Differences in Feet

ID	dN	dE	dZ	
PVE3RP	0.01	0.02	0.03	Reference at City Hall
RP01	0.00	0.01	0.04	Check Point
RP02	0.00	0.00	0.00	Fixed Base Station
RP03	0.00	0.00	0.00	Check Point
RP05	0.01	0.00	0.01	Check Point

Recovery and confirmation of a stable reference frame is essential for assessing the actual movement of the monitoring points. The differences listed above are at the noise level of the measurements confirming a successful recovery of the reference frame.

2D Horizontal & Vertical Movements

In the attached “PB MOVEMENT DATA POSTING...” spreadsheet, the measured land movements are listed for the referenced period, and for a normalized average month of 30.42 days, for comparing the rates of movement with previous periods. The attached spreadsheet lists the movement azimuths (directions clockwise from north) in degrees, the two-dimensional horizontal movements, and vertical (elevation) changes during the period in US Survey Feet.

This survey included 101 points, 55 of which in the Full Monitoring period reported movements greater than the confidence level. For the stated period, the general movements vary and average about 1.1 foot with a maximum of 1.8 feet normalized to an average month. The generally, the change in the rate of land movement (velocity) over the previous period varied from about -11% to +23% averaging about -2%.

Accuracy Statements

The horizontal (2D) vector residuals are estimated at 0.01 feet with a Standard Deviation of 0.01 feet and a range of 0.00 to 0.02 feet. The absolute value of the vertical vector residuals are estimated at 0.02 feet with a Standard Deviation of 0.01 feet and a range of -0.02 to +0.04 feet.

The accuracy or uncertainty of the measured horizontal (2D) movements between two monitoring surveys is estimated to be 0.04' at the 95% Level of Confidence. The confidence level for a weekly measurement normalized to a monthly is about 0.10 feet. Movements less than the Confidence Level are statistically indeterminate. The estimated vertical measured movement confidence is about 0.05' to 0.10' depending on obstructions to satellite signals.

Trend Assessment

“Trend Analysis” and “Deflection Analysis” are alternate methods for assessing actual movements. The movement accuracy is estimated at 0.04 feet at sites with minor obstructions to sky view. Movement directions consistent with the expected directions when comparing the periodic directions with the overall directions are indicative of actual movements. When the directions differing from the expectation for the slide and the overall movements and the movement distance approximates the estimated Confidence Level of the measurements, then no movement is deemed detected.

Monitoring Point Monument Notes & Descriptions

See prior Reports for existing point descriptions. See the attached spreadsheet file “PB MOVEMENT DATA POSTING.... .xlsx” for California State Plane Coordinates Zone 5 in the NAD83 (2007) Epoch 2007.00 and elevations in the NAVD88 Datum.

Point Description: Update of Points set in April & May

AB78	Disturbed
KC38	Destroyed

Addendum No. 27

Report Portuguese Bend Land Movement Monitoring Survey Partial Monitoring Survey No. M65 – February 11, 2025

This is a Partial Monitoring Survey Addendum Report. The field survey took place February 11, 2025, 8 days after the previous Monitoring Survey. The survey included 23 monitoring points and 5 reference control points with the movements listed in the attached spreadsheet “PB MOVEMENT DATA POSTING... .xlsx”. Epoch performed the field work for this Partial Monitoring Survey and MSC processed the observations and produced the Reports.

Network Adjustment & Analysis

A minimally constrained adjustment was processed to develop NAD83 (2007) Epoch 2007.00 CA Zone 5 State Plane Coordinates and NAVD88 Heights. A least squares network adjustment was fixed at point RP02 and a check was made to other network reference points noted below. Differences from the known fixed positions to the measured positions by this survey are listed here with their north, east and vertical components in feet.

Differences in Feet

ID	dN	dE	dZ	
PVE3RP	0.02	0.02	0.02	Reference at City Hall
RP01	0.01	0.00	0.01	Check Point
RP02	0.00	0.00	0.00	Fixed Base Station
RP03	0.00	0.04	0.01	Check Point
RP05	0.01	0.01	0.03	Check Point

Recovery and confirmation of a stable reference frame is essential for assessing the actual movement of the monitoring points. The differences listed above are at the noise level of the measurements confirming a successful recovery of the reference frame.

2D Horizontal & Vertical Movements

In the attached “PB MOVEMENT DATA POSTING...” spreadsheet, the measured land movements are listed for the referenced period, and for a normalized average month of 30.42 days, for comparing the rates of

movement with previous periods. The attached spreadsheet lists the movement azimuths (directions clockwise from north) in degrees, the two-dimensional horizontal movements, and vertical (elevation) changes during the period in US Survey Feet.

This survey included 23 points, 17 of which reported movements greater than the confidence level. For those points, for the stated period, the general movements normalized to an average month vary and average about 0.8 feet with a maximum of 1.7 feet; the general change in the rate of land movement (velocity) for the same period varied from about -66% to +23 averaging about -15%. Note, these values are derived by normalizing the weekly movements to an average month which is less accurate due to the propagation of the uncertainty compared with observations over a monthly period.

Accuracy Statements

The horizontal (2D) vector residuals are estimated at 0.01 feet with a Standard Deviation of 0.01 feet and a range of 0.00 to 0.02 feet. The absolute value of the vertical vector residuals are estimated at 0.02 feet with a Standard Deviation of 0.01 feet and a range of -0.02 to +0.04 feet.

The accuracy or uncertainty of the measured horizontal (2D) movements between two monitoring surveys is estimated to be 0.04' at the 95% Level of Confidence. The confidence level for a weekly measurement normalized to a monthly is about 0.10 feet. Movements less than the Confidence Level are statistically indeterminate. The estimated vertical measured movement confidence is about 0.05' to 0.10' depending on obstructions to satellite signals.

Trend Assessment

“Trend Analysis” and “Deflection Analysis” are alternate methods for assessing actual movements. The movement accuracy is estimated at 0.04 feet at sites with minor obstructions to sky view. Movement directions consistent with the expected directions when comparing the “periodic” directions with the “overall” directions are indicative of actual movements. When the directions differing from the expectation for the slide and the overall movements and the movement distance approximates the estimated Confidence Level of the measurements, then no movement is deemed detected.

Monitoring Point Monument Notes & Descriptions

See prior Reports for existing point descriptions. See the attached spreadsheet file “PB MOVEMENT DATA POSTING.... .xlsx” for California State Plane Coordinates Zone 5 in the NAD83 (2007) Epoch 2007.00 and elevations in the NAVD88 Datum.

Addendum No. 28

Report Portuguese Bend Land Movement Monitoring Survey Partial Monitoring Survey No. M66 – February 19, 2025

This is a Partial Monitoring Survey Addendum Report. The field survey took place February 19, 2025, 8 days after the previous Monitoring Survey. The survey included 23 monitoring points and 5 reference control points with the movements listed in the attached spreadsheet “PB MOVEMENT DATA POSTING... .xlsx”. Epoch performed the field work for this Partial Monitoring Survey and MSC processed the observations and produced the Reports.

Network Adjustment & Analysis

A minimally constrained adjustment was processed to develop NAD83 (2007) Epoch 2007.00 CA Zone 5 State Plane Coordinates and NAVD88 Heights. A least squares network adjustment was fixed at point RP02 and a check was made to other network reference points noted below. Differences from the known fixed positions to the measured positions by this survey are listed here with their north, east and vertical components in feet.

Differences in Feet

ID	dN	dE	dZ	
PVE3RP	0.02	0.00	0.03	Reference at City Hall
RP01	0.00	0.02	0.02	Check Point
RP02	0.00	0.00	0.00	Fixed Base Station
RP03	-0.01	0.04	0.03	Check Point
RP05	0.00	0.02	0.03	Check Point

Recovery and confirmation of a stable reference frame is essential for assessing the actual movement of the monitoring points. The differences listed above are at the noise level of the measurements confirming a successful recovery of the reference frame.

2D Horizontal & Vertical Movements

In the attached “PB MOVEMENT DATA POSTING...” spreadsheet, the measured land movements are listed for the referenced period, and for a normalized average month of 30.42 days, for comparing the rates of movement with previous periods. The attached spreadsheet lists the movement azimuths (directions clockwise from north) in degrees, the two-dimensional horizontal movements, and vertical (elevation) changes during the period in US Survey Feet.

This survey included 23 points, 17 of which reported movements greater than the confidence level. For those points, for the stated period, the general movements normalized to an average month vary and average about 1.0 feet with a maximum of 1.6 feet; the general change in the rate of land movement (velocity) for the same period varied from about -6% to +95 averaging about +31%. Note, these values are derived by normalizing the weekly movements to an average month which is less accurate due to the propagation of the uncertainty compared with observations over a monthly period.

Accuracy Statements

The horizontal (2D) vector residuals are estimated at 0.01 feet with a Standard Deviation of 0.01 feet and a range of 0.00 to 0.02 feet. The absolute value of the vertical vector residuals are estimated at 0.01 feet with a Standard Deviation of 0.01 feet and a range of -0.04 to +0.01 feet.

The accuracy or uncertainty of the measured horizontal (2D) movements between two monitoring surveys is estimated to be 0.04' at the 95% Level of Confidence. The confidence level for a weekly measurement normalized to a monthly is about 0.10 feet. Movements less than the Confidence Level are statistically indeterminate. The estimated vertical measured movement confidence is about 0.05' to 0.10' depending on obstructions to satellite signals. Note, this should not be characterized as instrument error, but rather is the results of numerous redundant measurements that take into consideration multiple sources that affect the precision of the measurements.

Trend Assessment

“Trend Analysis” and “Deflection Analysis” are alternate methods for assessing actual movements. The movement accuracy is estimated at 0.04 feet at sites with minor obstructions to sky view. Movement directions consistent with the expected directions when comparing the “periodic” directions with the “overall” directions are indicative of actual movements. When the directions differing from the expectation for the slide and the overall movements and the movement distance approximates the estimated Confidence Level of the measurements, then no movement is deemed detected.

Monitoring Point Monument Notes & Descriptions

See prior Reports for existing point descriptions. See the attached spreadsheet file “PB MOVEMENT DATA POSTING....xlsx” for California State Plane Coordinates Zone 5 in the NAD83 (2007) Epoch 2007.00 and elevations in the NAVD88 Datum.

Addendum No. 29

Report Portuguese Bend Land Movement Monitoring Survey Partial Monitoring Survey No. M67 – February 26, 2025

This is a Partial Monitoring Survey Addendum Report. The field survey took place February 26, 2025, 7 days after the previous Monitoring Survey. The survey included 23 monitoring points and 5 reference control points with the movements listed in the attached spreadsheet “PB MOVEMENT DATA POSTING... .xlsx”. Epoch performed the field work for this Partial Monitoring Survey and MSC processed the observations and produced the Reports.

Network Adjustment & Analysis

A minimally constrained adjustment was processed to develop NAD83 (2007) Epoch 2007.00 CA Zone 5 State Plane Coordinates and NAVD88 Heights. A least squares network adjustment was fixed at point RP02 and a check was made to other network reference points noted below. Differences from the known fixed positions to the measured positions by this survey are listed here with their north, east and vertical components in feet.

ID	Differences in Feet			
	dN	dE	dZ	
PVE3RP	-0.01	0.01	0.01	Reference at City Hall
RP01	-0.03	0.02	0.01	Check Point
RP02	0.00	0.00	0.00	Fixed Base Station
RP03	-0.02	0.02	0.03	Check Point
RP05	-0.01	0.01	0.05	Check Point

Recovery and confirmation of a stable reference frame is essential for assessing the actual movement of the monitoring points. The differences listed above are at the expected uncertainty level of the measurements and confirm a successful recovery of the reference frame.

2D Horizontal & Vertical Movements

In the attached “PB MOVEMENT DATA POSTING...” spreadsheet, the measured land movements are listed for the referenced period, and for a normalized average month of 30.42 days, for comparing the rates of movement with previous periods. The attached spreadsheet lists the movement azimuths (directions clockwise from north) in degrees, the two-dimensional horizontal movements, and vertical (elevation) changes during the period in US Survey Feet.

This survey included 23 points, 18 of which reported movements greater than the confidence level. For those points, for the stated period, the general movements normalized to an average month vary and average about 0.9 feet with a maximum of 1.6 feet; the general change in the rate of land movement (velocity) for the same period varied from about -26% to +18 averaging about -4%. Note, these values are derived by normalizing the weekly movements to an average month which is less accurate due to the propagation of the uncertainty compared with observations over a monthly period.

Accuracy Statements

The horizontal (2D) vector residuals are estimated at 0.01 feet with a Standard Deviation of 0.01 feet and a range of 0.00 to 0.03 feet. The absolute value of the vertical vector residuals are estimated at 0.02 feet with a Standard Deviation of 0.01 feet and a range of -0.04 to +0.04 feet.

The accuracy or uncertainty of the measured horizontal (2D) movements between two monitoring surveys is estimated to be 0.04' at the 95% Level of Confidence. The confidence level for a weekly measurement normalized to a monthly is about 0.10 feet. Movements less than the Confidence Level are statistically indeterminate. The estimated vertical measured movement confidence is about 0.05' to 0.10' depending on obstructions to satellite signals. Note, this should not be characterized as instrument error, but rather is the results of numerous redundant measurements that take into consideration multiple sources that affect the precision of the measurements.

Monitoring Point Monument Notes & Descriptions

See prior Reports for existing point descriptions. See the attached spreadsheet file “PB MOVEMENT DATA POSTING.... .xlsx” for California State Plane Coordinates Zone 5 in the NAD83 (2007) Epoch 2007.00 and elevations in the NAVD88 Datum.

Addendum No. 30

Report Portuguese Bend Land Movement Monitoring Survey Partial Monitoring Survey No. M68 – March 4, 2025

This is a Partial Monitoring Survey Addendum Report. The field survey took place March 4, 2025, 6 days after the previous Monitoring Survey. The survey included 23 monitoring points and 5 reference control points with the movements listed in the attached spreadsheet “PB MOVEMENT DATA POSTING... .xlsx”. Epoch performed the field work for this Partial Monitoring Survey and MSC processed the observations and produced the Reports.

Network Adjustment & Analysis

A minimally constrained adjustment was processed to develop NAD83 (2007) Epoch 2007.00 CA Zone 5 State Plane Coordinates and NAVD88 Heights. A least squares network adjustment was fixed at point RP02 and a check was made to other network reference points noted below. Differences from the known fixed positions to the measured positions by this survey are listed here with their north, east and vertical components in feet.

Differences in Feet				
ID	dN	dE	dZ	
PVE3RP	-0.02	0.01	0.03	Reference at City Hall
RP01	0.00	0.03	0.02	Check Point
RP02	0.00	0.00	0.00	Fixed Base Station
RP03	-0.04	0.03	0.03	Check Point
RP05	-0.01	0.02	0.03	Check Point

Recovery and confirmation of a stable reference frame is essential for assessing the actual movement of the monitoring points. The differences listed above are at the expected uncertainty level of the measurements and confirm a successful recovery of the reference frame.

2D Horizontal & Vertical Movements

In the attached “PB MOVEMENT DATA POSTING...” spreadsheet, the measured land movements are listed for the referenced period, and for a normalized average month of 30.42 days, for comparing the rates of movement with previous periods. The attached spreadsheet lists the movement azimuths (directions clockwise from north) in degrees, the two-dimensional horizontal movements, and vertical (elevation) changes during the period in US Survey Feet.

This survey included 23 points, 18 of which reported movements greater than the confidence level. For those points, for the stated period, the general movements normalized to an average month vary and average about 0.8 feet with a maximum of 1.5 feet; the general change in the rate of land movement (velocity) for the same period varied from about -23% to +13 averaging about -2%. Note, these values are derived by normalizing the weekly movements to an average month which is less accurate due to the propagation of the uncertainty compared with observations over a monthly period.

Accuracy Statements

The horizontal (2D) vector residuals are estimated at 0.01 feet with a Standard Deviation of 0.01 feet and a range of 0.00 to 0.02 feet. The absolute value of the vertical vector residuals are estimated at 0.01 feet with a Standard Deviation of 0.01 feet and a range of -0.02 to +0.02 feet.

The accuracy or uncertainty of the measured horizontal (2D) movements between two monitoring surveys is estimated to be 0.04' at the 95% Level of Confidence. The confidence level for a weekly measurement normalized to a monthly is about 0.10 feet. Movements less than the Confidence Level are statistically indeterminate. The estimated vertical measured movement confidence is about 0.05' to 0.10' depending on obstructions to satellite signals. Note, this should not be characterized as instrument error, but rather is the results of numerous redundant measurements that take into consideration multiple sources that affect the precision of the measurements.

Monitoring Point Monument Notes & Descriptions

See prior Reports for existing point descriptions. See the attached spreadsheet file "PB MOVEMENT DATA POSTING....xlsx" for California State Plane Coordinates Zone 5 in the NAD83 (2007) Epoch 2007.00 and elevations in the NAVD88 Datum.

Addendum No. 31

Report Portuguese Bend Land Movement Monitoring Survey Full Monitoring Survey No. M69 – March 9, 2025

This is a Full Monitoring Survey Addendum Report. The field survey took place March 9, 2025, 34 days after the previous Full Monitoring Survey M64 and 5 days after the previous Partial Monitoring Survey M68. The survey included 102 monitoring points and 5 reference control points with the movements listed in the attached spreadsheet "PB MOVEMENT DATA POSTING... .xlsx". Shane Wolters of Epoch performed an RTK field survey of the upper Reserve area with a base set at RP03. McGee of MSC performed the RTK field survey for the remainder of the Portuguese Bend Monitoring Network with a base set at RP02. McGee processed the observations and produced the Reports. Static data at the base stations and CGPS stations PVE3 and PVHS was processed to create a static network to strengthen the adjustment.

Network Adjustment & Analysis

A network adjustment was processed to develop NAD83 (2007) Epoch 2007.00 CA Zone 5 State Plane Coordinates and NAVD88 Heights. A minimally constrained adjustment was processed by fixing PVE3RP, the primary Reference Frame (coordinate system) constraint at RPV City Hall for these surveys, for the purpose of verifying the stability of the reference points and reference frame. This resulted in slight differences in some of the reference points. The differences from the measured positions to the previously known positions in the north, east and vertical differences are listed below in feet.

ID	Differences in Feet			
	dN	dE	dZ	
PVE3RP	0.00	0.00	0.00	Reference at City Hall
RP01	0.00	0.00	-0.03	Check Point
RP02	0.01	-0.02	0.02	Base Station
RP03	-0.02	0.01	0.04	Check Point
RP05	0.00	0.00	0.06	Check Point
PVE3	0.01	0.02	-0.08	Primary Control for Reference Frame

Recovery and confirmation of a stable reference frame is essential for assessing the actual movement of the monitoring points. The differences are expected measurement uncertainty and insignificant. This confirms the successful recovery of a stable reference frame (coordinate system) to assess movements. The new positions of the reference points will be utilized going forward fixing RP02 based on the updated positions.

2D Horizontal & Vertical Movements

In the attached "PB MOVEMENT DATA POSTING..." spreadsheet, the measured land movements are listed for the referenced period, and for a normalized average month of 30.42 days, for comparing the rates of movement with previous periods. The attached spreadsheet lists the movement azimuths (directions clockwise

from north) in degrees, the two-dimensional horizontal movements, and vertical (elevation) changes during the period in US Survey Feet.

This survey included 100 points, 52 of which in the Full Monitoring period reported movements greater than the confidence level. For the stated period, the general movements vary and average about 1.1 foot with a maximum of 1.8 feet normalized to an average month. The generally, the change in the rate of land movement (velocity) over the previous period varied from about -5% to +48% averaging about +7%.

Accuracy Statements

The horizontal (2D) vector residuals are estimated at 0.01 feet with a Standard Deviation of 0.01 feet and a range of 0.00 to 0.02 feet. The absolute value of the vertical vector residuals are estimated at 0.01 feet with a Standard Deviation of 0.01 feet and a range of -0.03 to +0.05 feet.

The accuracy or uncertainty of the measured horizontal (2D) movements between two monitoring surveys is estimated to be 0.04' at the 95% Level of Confidence. The confidence level for a weekly measurement normalized to a monthly is about 0.10 feet. Movements less than the Confidence Level are statistically indeterminate. The estimated vertical measured movement confidence is about 0.05' to 0.10' depending on obstructions to satellite signals.

Monitoring Point Monument Notes & Descriptions

See prior Reports for existing point descriptions. See the attached spreadsheet file "PB MOVEMENT DATA POSTING.... .xlsx" for California State Plane Coordinates Zone 5 in the NAD83 (2007) Epoch 2007.00 and elevations in the NAVD88 Datum.

Addendum No. 32

Report Portuguese Bend Land Movement Monitoring Survey Partial Monitoring Survey No. M70 – March 19, 2025

This is a Partial Monitoring Survey Addendum Report. The field survey took place March 9, 2025, 10 days after the previous Monitoring Survey. The survey included 23 monitoring points and 5 reference control points with the movements listed in the attached spreadsheet "PB MOVEMENT DATA POSTING... .xlsx". Epoch performed the field work for this Partial Monitoring Survey and MSC processed the observations and produced the Reports.

Network Adjustment & Analysis

A network adjustment was processed to develop NAD83 (2007) Epoch 2007.00 CA Zone 5 State Plane Coordinates and NAVD88 Heights. A minimally constrained adjustment was processed by fixing RP02 based on the M69 Network Adjustment and a check made to other network reference points noted below. The differences from their measured positions to the known positions in the north, east and vertical differences are listed in feet.

ID	Differences in Feet			
	dN	dE	dZ	
PVE3RP	0.00	0.00	0.03	Reference at City Hall
RP01	-0.02	0.03	0.03	Check Point
RP02	0.00	0.00	0.00	Fixed Base Station
RP03	-0.01	0.00	0.02	Check Point
RP05	0.01	0.01	-0.01	Check Point

Recovery and confirmation of a stable reference frame is essential for assessing the actual movement of the monitoring points. The differences are expected measurement uncertainty and insignificant. This confirms the successful recovery of a stable reference frame (coordinate system) to assess movements.

2D Horizontal & Vertical Movements

In the attached “PB MOVEMENT DATA POSTING...” spreadsheet, the measured land movements are listed for the referenced period, and for a normalized average month of 30.42 days, for comparing the rates of movement with previous periods. The attached spreadsheet lists the movement azimuths (directions clockwise from north) in degrees, the two-dimensional horizontal movements, and vertical (elevation) changes during the period in US Survey Feet.

This survey included 23 points, 18 of which reported movements greater than the confidence level. For those points, for the stated period, the general movements normalized to an average month vary and average about 0.9 feet with a maximum of 1.6 feet; the general change in the rate of land movement (velocity) for the same period varied from about -39% to +58 averaging about +1%. Note, these values are derived by normalizing the weekly movements to an average month which is less accurate due to the signal to noise ratio and propagation of the uncertainty compared with observations over a monthly period.

Accuracy Statements

The horizontal (2D) vector residuals are estimated at 0.01 feet with a Standard Deviation of 0.01 feet and a range of 0.00 to 0.02 feet. The absolute value of the vertical vector residuals are estimated at 0.01 feet with a Standard Deviation of 0.01 feet and a range of -0.02 to +0.03 feet.

The accuracy or uncertainty of the measured horizontal (2D) movements between two monitoring surveys is estimated to be 0.04’ at the 95% Level of Confidence. The confidence level for a weekly measurement normalized to a monthly is about 0.10 feet. Movements less than the Confidence Level are statistically indeterminate. The estimated vertical measured movement confidence is about 0.05’ to 0.10’ depending on obstructions to satellite signals.

Monitoring Point Monument Notes & Descriptions

See prior Reports for existing point descriptions. See the attached spreadsheet file “PB MOVEMENT DATA POSTING.... .xlsx” for California State Plane Coordinates Zone 5 in the NAD83 (2007) Epoch 2007.00 and elevations in the NAVD88 Datum.

Addendum No. 33

Report Portuguese Bend Land Movement Monitoring Survey Partial Monitoring Survey No. M71 – March 28, 2025

This is a Partial Monitoring Survey Addendum Report. The field survey took place March 28, 2025, 9 days after the previous Monitoring Survey. The survey included 23 monitoring points and 5 reference control points with the movements listed in the attached spreadsheet “PB MOVEMENT DATA POSTING... .xlsx”. Epoch performed the field work for this Partial Monitoring Survey and MSC processed the observations and produced the Reports.

Network Adjustment & Analysis

A network adjustment was processed to develop NAD83 (2007) Epoch 2007.00 CA Zone 5 State Plane Coordinates and NAVD88 Heights. A minimally constrained adjustment was processed by fixing RP02 and a check made to other network reference points noted below. The differences from their measured positions to the known positions in the north, east and vertical differences are listed in feet.

ID	Differences in Feet			
	dN	dE	dZ	
PVE3RP	0.01	0.02	0.03	Reference at City Hall
RP01	0.02	0.02	0.05	Check Point
RP02	0.00	0.00	0.00	Fixed Base Station
RP03	0.01	0.01	0.02	Check Point
RP05	0.00	0.01	0.01	Check Point

Recovery and confirmation of a stable reference frame is essential for assessing the actual movement of the monitoring points. The differences are expected measurement uncertainty and insignificant. This confirms the successful recovery of a stable reference frame (coordinate system) to assess movements.

2D Horizontal & Vertical Movements

In the attached “PB MOVEMENT DATA POSTING...” spreadsheet, the measured land movements are listed for the referenced period, and for a normalized average month of 30.42 days, for comparing the rates of movement with previous periods. The attached spreadsheet lists the movement azimuths (directions clockwise from north) in degrees, the two-dimensional horizontal movements, and vertical (elevation) changes during the period in US Survey Feet.

This survey included 23 points, 18 of which reported movements greater than the confidence level. For those points, for the stated period, the general movements normalized to an average month vary and average about 0.8 feet with a maximum of 1.4 feet; the general change in the rate of land movement (velocity) for the same period varied from about -29% to +0 averaging about -14%. Note, these values are derived by normalizing the weekly movements to an average month which is less accurate due to the signal to noise ratio and propagation of the uncertainty compared with observations over a monthly period.

Accuracy Statements

The horizontal (2D) vector residuals are estimated at 0.01 feet with a Standard Deviation of 0.01 feet and a range of 0.00 to 0.02 feet. The absolute value of the vertical vector residuals are estimated at 0.01 feet with a Standard Deviation of 0.01 feet and a range of -0.02 to +0.03 feet.

The accuracy or uncertainty of the measured horizontal (2D) movements between two monitoring surveys is estimated to be 0.04' at the 95% Level of Confidence. The confidence level for a weekly measurement normalized to a monthly is about 0.10 feet. Movements less than the Confidence Level are statistically indeterminate. The estimated vertical measured movement confidence is about 0.05' to 0.10' depending on obstructions to satellite signals.

Monitoring Point Monument Notes & Descriptions

See prior Reports for existing point descriptions. See the attached spreadsheet file “PB MOVEMENT DATA POSTING.... .xlsx” for California State Plane Coordinates Zone 5 in the NAD83 (2007) Epoch 2007.00 and elevations in the NAVD88 Datum.

Addendum No. 34

Report Portuguese Bend Land Movement Monitoring Survey Full Monitoring Survey No. M72 – April 5, 2025

This is a Full Monitoring Survey Addendum Report. The field survey took place April 9, 2025, 27 days after the previous Full Monitoring Survey M69 and 8 days after the previous Partial Monitoring Survey M71. The survey included 100 monitoring points and 5 reference control points with the movements listed in the attached spreadsheet “PB MOVEMENT DATA POSTING... .xlsx”. Shane Wolters of Epoch performed an RTK field survey of the upper Reserve area with a base set at RP03. McGee of MSC performed the RTK field survey for the remainder of the Portuguese Bend Monitoring Network with a base set at RP02. McGee processed the observations and produced the Reports.

Network Adjustment & Analysis

A network adjustment was processed to develop NAD83 (2007) Epoch 2007.00 CA Zone 5 State Plane Coordinates and NAVD88 Heights. A minimally constrained adjustment was processed by fixing RP02 for the purpose of checking other reference points and verifying the stability of the reference frame. The differences

from the measured positions to the previously known positions in the north, east and vertical differences are listed below in feet.

Differences in Feet

ID	dN	dE	dZ	
PVE3RP	-0.01	0.01	-0.02	Reference at City Hall
RP01	0.01	-0.01	0.02	Check Point
RP02	0.01	-0.02	0.02	Fixed Base Station
RP03	0.00	0.00	0.00	Fixed Base
RP05	-0.01	0.01	-0.02	Check Point
PVE3	0.01	0.02	-0.08	Primary Control for Reference Frame

Recovery and confirmation of a stable reference frame is essential for assessing the actual movement of the monitoring points. The differences are expected measurement uncertainty and insignificant. This confirms the successful recovery of a stable reference frame (coordinate system) to assess movements.

2D Horizontal & Vertical Movements

In the attached “PB MOVEMENT DATA POSTING...” spreadsheet, the measured land movements are listed for the referenced period, and for a normalized average month of 30.42 days, for comparing the rates of movement with previous periods. The attached spreadsheet lists the movement azimuths (directions clockwise from north) in degrees, the two-dimensional horizontal movements, and vertical (elevation) changes during the period in US Survey Feet.

This survey included 100 points, 53 of which in the Full Monitoring period reported movements greater than the confidence level. For the stated period, the general movements vary and average about 1.1 foot with a maximum of 1.6 feet normalized to an average month. The generally, the change in the rate of land movement (velocity) over the previous period varied from about -14% to +26% averaging about -2%.

Accuracy Statements

The horizontal (2D) vector residuals are estimated at 0.01 feet with a Standard Deviation of 0.01 feet and a range of 0.00 to 0.03 feet. The absolute value of the vertical vector residuals are estimated at 0.01 feet with a Standard Deviation of 0.01 feet and a range of -0.02 to +0.03 feet.

The accuracy or uncertainty of the measured horizontal (2D) movements between two monitoring surveys is estimated to be 0.04’ at the 95% Level of Confidence. The confidence level for a weekly measurement normalized to a monthly is about 0.10 feet. Movements less than the Confidence Level are statistically indeterminate. The estimated vertical measured movement confidence is about 0.05’ to 0.10’ depending on obstructions to satellite signals.

Monitoring Point Monument Notes & Descriptions

See prior Reports for existing point descriptions. See the attached spreadsheet file “PB MOVEMENT DATA POSTING.... .xlsx” for California State Plane Coordinates Zone 5 in the NAD83 (2007) Epoch 2007.00 and elevations in the NAVD88 Datum.

Addendum No. 35

Report Portuguese Bend Land Movement Monitoring Survey Partial Monitoring Survey No. M73 – April 18, 2025

This is a Partial Monitoring Survey Addendum Report. The field survey took place April 18, 2025, 13 days after the previous Monitoring Survey. The survey included 28 monitoring points and 5 reference control points with the movements listed in the attached spreadsheet “PB MOVEMENT DATA POSTING... .xlsx”. Epoch performed the field work for this Partial Monitoring Survey and MSC processed the observations and produced the Reports. As of this survey the monitoring will occur semi-monthly.

Network Adjustment & Analysis

A network adjustment was processed to develop NAD83 (2007) Epoch 2007.00 CA Zone 5 State Plane Coordinates and NAVD88 Heights. A minimally constrained adjustment was processed by fixing RP02 and a check made to other network reference points noted below. The differences from their measured positions to the known positions in the north, east and vertical differences are listed in feet.

ID	Differences in Feet			
	dN	dE	dZ	
PVE3RP	-0.03	0.02	0.02	Reference at City Hall
RP01	-0.01	0.03	0.08	Check Point
RP02	0.00	0.00	0.00	Fixed Base Station
RP03	0.00	0.00	0.00	Check Point
RP05	-0.01	0.02	-0.01	Check Point

Recovery and confirmation of a stable reference frame is essential for assessing the actual movement of the monitoring points. The differences are expected measurement uncertainty and insignificant. This confirms the successful recovery of a stable reference frame (coordinate system) to assess movements.

2D Horizontal & Vertical Movements

In the attached "PB MOVEMENT DATA POSTING..." spreadsheet, the measured land movements are listed for the referenced period, and for a normalized average month of 30.42 days, for comparing the rates of movement with previous periods. The attached spreadsheet lists the movement azimuths (directions clockwise from north) in degrees, the two-dimensional horizontal movements, and vertical (elevation) changes during the period in US Survey Feet.

This survey included 28 points, 23 of which reported movements greater than the confidence level. For those points, for the stated period, the general movements normalized to an average month vary and average about 1.0 foot with a maximum of 1.6 feet; the general change in the rate of land movement (velocity) for the same period varied from about -10% to +11 averaging about 0%. Note, the values are derived by normalizing the semi-monthly movements to an average month which is less accurate due to the signal to noise ratio and propagation of the uncertainty compared with observations for a monthly period.

Accuracy Statements

The horizontal (2D) vector residuals are estimated at 0.01 feet with a Standard Deviation of 0.01 feet and a range of 0.00 to 0.03 feet. The absolute value of the vertical vector residuals are estimated at 0.01 feet with a Standard Deviation of 0.01 feet and a range of -0.05 to +0.01 feet.

The accuracy or uncertainty of the measured horizontal (2D) movements between two monitoring surveys is estimated to be 0.04' at the 95% Level of Confidence. The confidence level for a weekly measurement normalized to a monthly is about 0.10 feet. Movements less than the Confidence Level are statistically indeterminate. The estimated vertical measured movement confidence is about 0.05' to 0.10' depending on obstructions to satellite signals.

Monitoring Point Monument Notes & Descriptions

See prior Reports for existing point descriptions. See the attached spreadsheet file "PB MOVEMENT DATA POSTING....xlsx" for California State Plane Coordinates Zone 5 in the NAD83 (2007) Epoch 2007.00 and elevations in the NAVD88 Datum.

SURVEYOR'S STATEMENT

The M38 Fall October 2023 Full Survey and subsequent 2024 Surveys and Addendum Reports on the procedures, criteria, and results of the City of Rancho Palos Verdes Portuguese Bend Land Movement Monitoring Surveys were prepared by me on October 30, 2023 with updates through **April 18, 2025** at the request of Ramzi Awwad, Director of Public Works for the City of Rancho Palos Verdes.


Michael R. McGee, PLS3945

