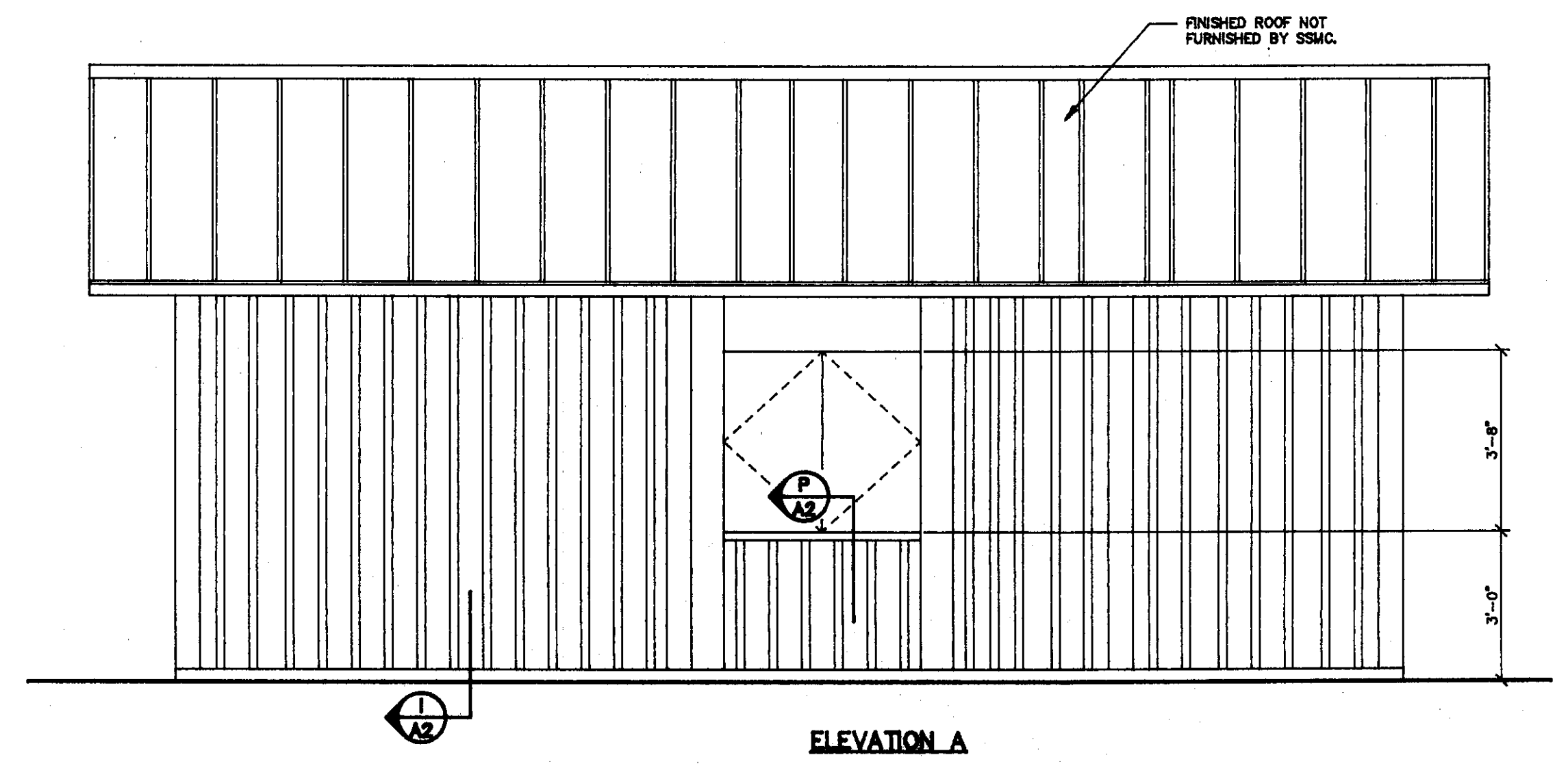
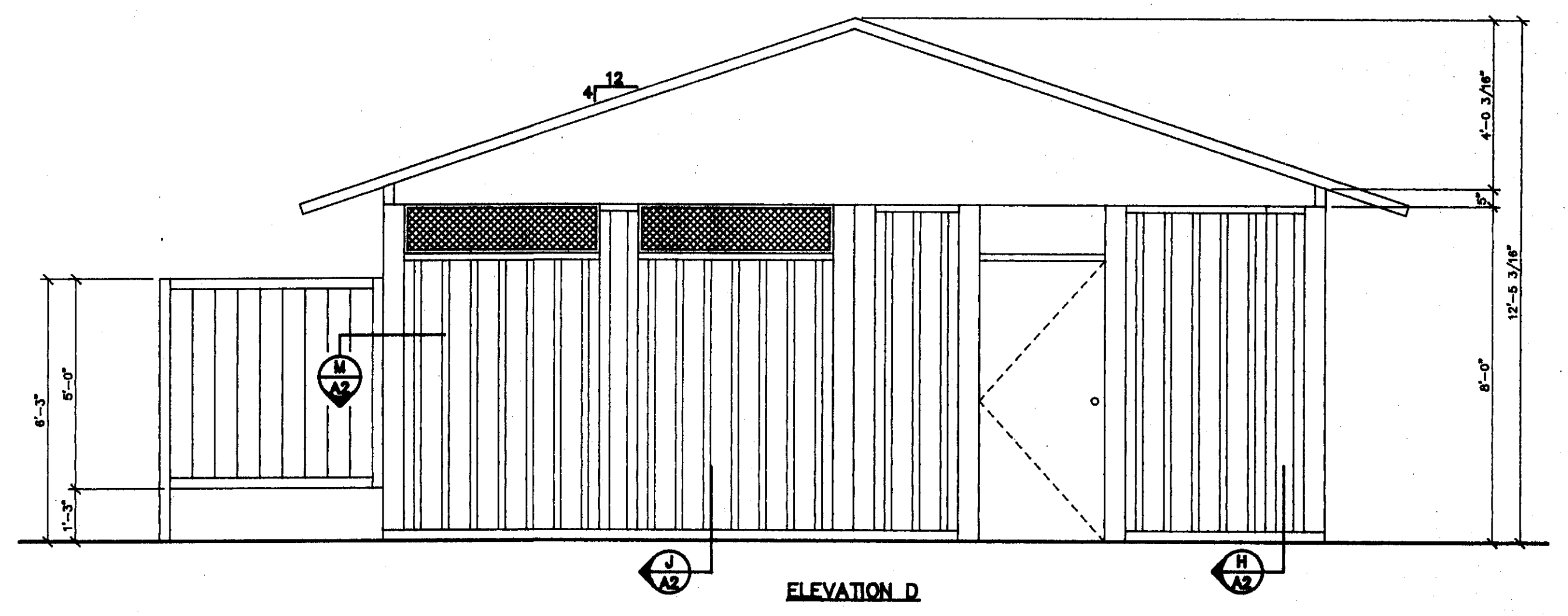


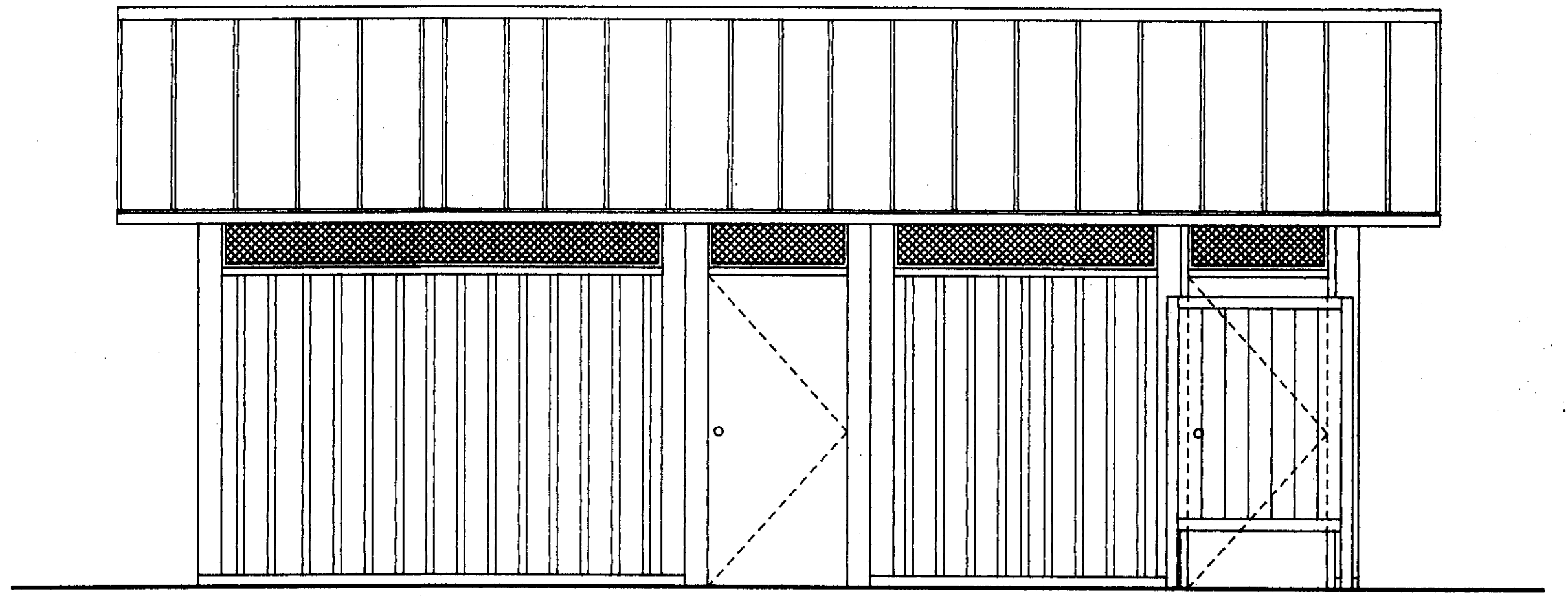
PLAN
3/8" = 1'-0"



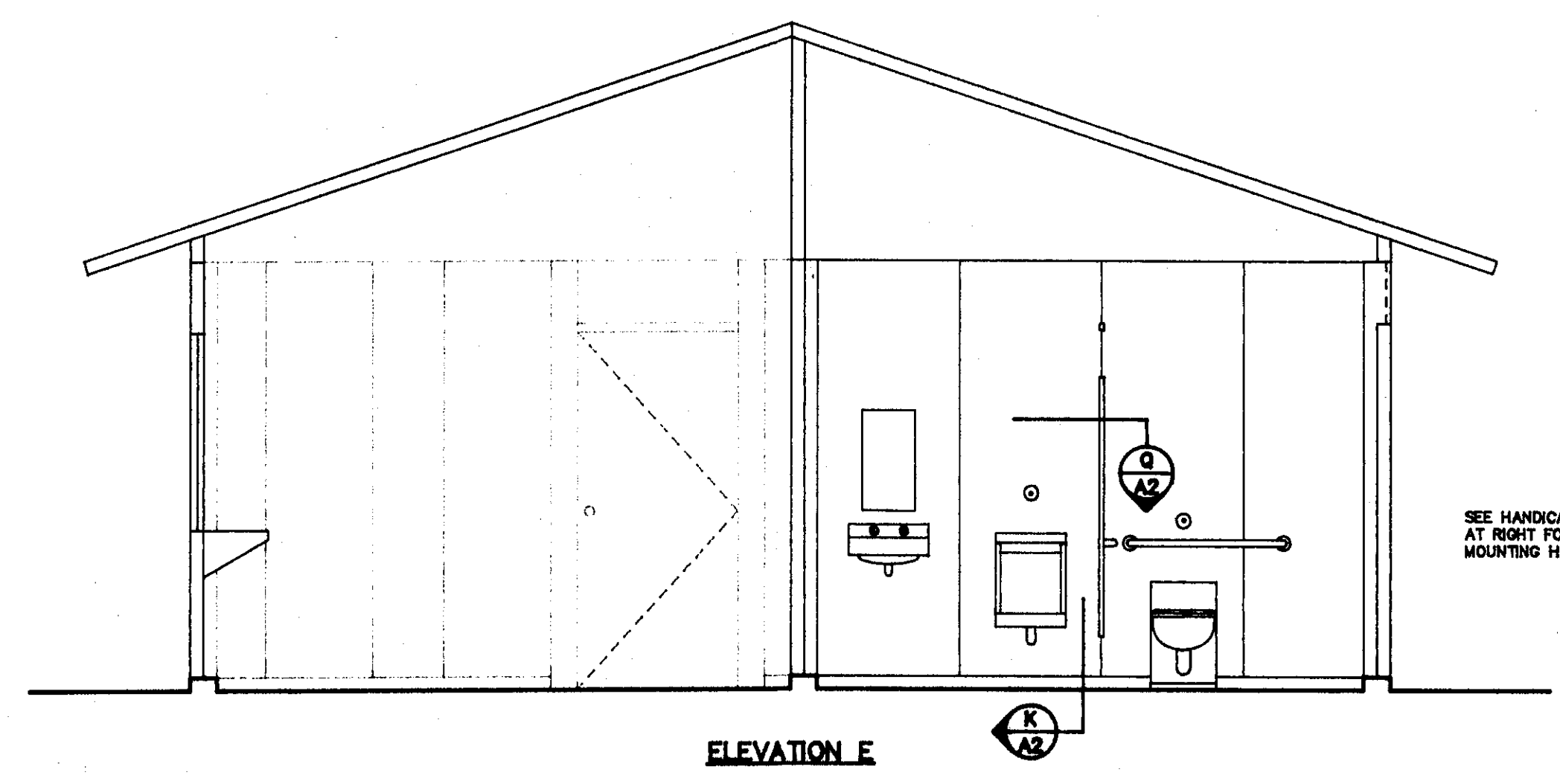
ELEVATION A



ELEVATION D



ELEVATION C



ELEVATION E

SEE HANDICAP NOTES
AT RIGHT FOR FIXTURE
MOUNTING HEIGHTS

HANDICAP NOTES:
"MEN", "WOMEN" AND HANDICAP ACCESS
SIGNS ARE PROVIDED. 60" DIA TURNING
CIRCLES PROVIDED IN RESTROOMS. 30"
CLEAR UNDER LAV APRONS. HDPC WC
SEAT AT +18". STD WC SEAT AT +16.5".
1.5" DIA STN STL GRAB BARS AT +33".
36" LONG BEHIND HDPC WC & 48" LONG
AT SIDE OF WC. BOTTOM OF HDPC MIR-
ROR AT +40". HDPC UR LIP AT +17".
STD UR LIP IF ANY AT +19".

ISSUANCE OF THIS DRAWING FOR APPROVAL DOES NOT CONSTITUTE ACCEPTANCE OF
CUSTOMER'S ORDER BY SUPER SECUR MFG. CO. THIS DRAWING TO BE USED IN PLACING
MATERIALS SOLD UNDER THIS CONTRACT ONLY. PURCHASER TO CHECK ALL DIMENSIONS AT
JOB AS SUPER SECUR MFG. CO. ASSUMES NO RESPONSIBILITY FOR FOUNDATIONS, SLAB,
CONCRETE CURBS OR GENERAL BUILDING DIMENSIONS.

SUPER SECUR MFG. CO.
A DIVISION OF ACORN ENGINEERING COMPANY
Sales: 1195 Evans Avenue San Francisco, CA 94124
Factory: 15058 Proctor Avenue City of Industry, CA 91744
(415) 824-1778 (818) 336-4561

MP-2325-G 22'-6" x 25'-0" SERIES 3 BUILDING w/CONCESSION / OFFICE & STORAGE			
REV 6/18/88 LHO	6/28/88 LHO	7/18/88 LHO	10/5/88 LHO
ABALONE COVE, RANCHO PALOS VERDES, CALIFORNIA			
DATE	DWN BY	JOB NO.	SHEET
5-30-88	LHO		A1