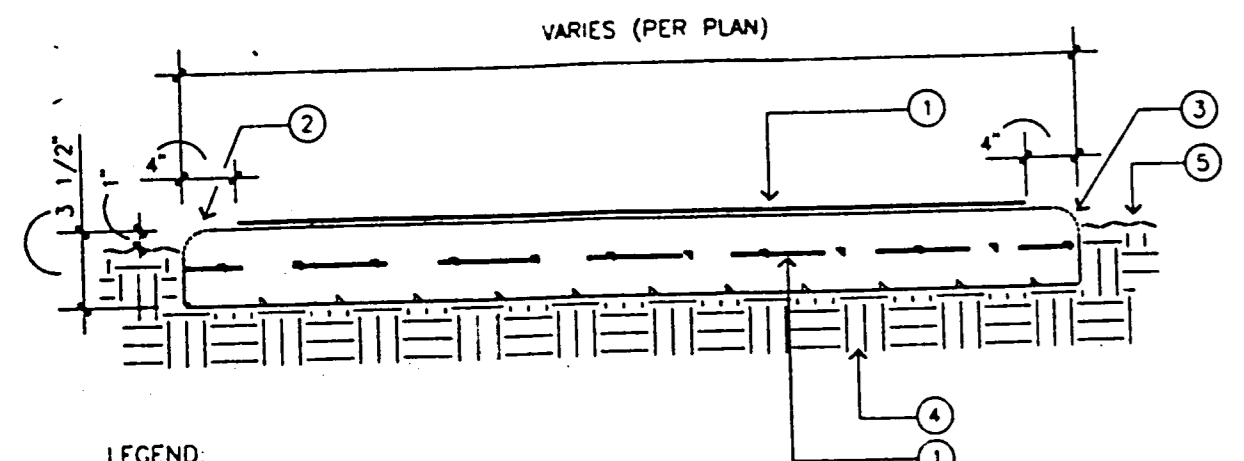


SMITHGALL
ASSOCIATES INC
LANDSCAPE ARCHITECTS

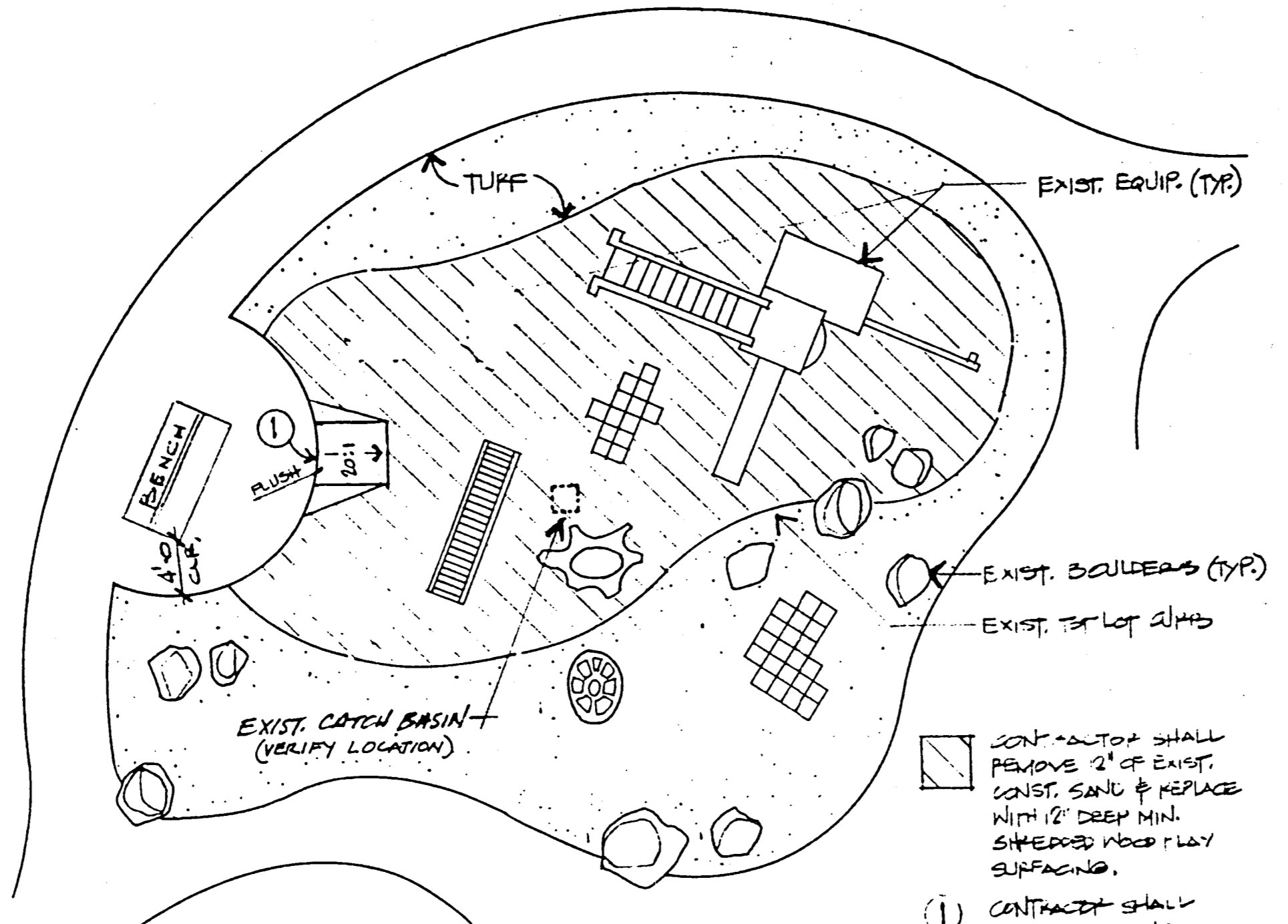
23436 WADERO SUITE 250
MISSION VIEJO, CA 92691
TELEPHONE 714.837.5519
FACSIMILE 714.837.4992

CITY OF
RANCHO
PALOS
VERDES

FRED HESSE PARK ADA REHABILITATION
FOR THE CITY OF
RANCHO PALOS VERDES, CALIFORNIA



- LEGEND
- MEDIUM BROOM FINISH PERPENDICULAR TO WALK EDGE. SEE PLAN FOR WIDTH OF WALK.
 - 4" WIDE SMOOTH TROWELED EDGE INCLUDING JOINTS.
 - 1/2" RADIUS ALL EDGES & JOINTS.
 - 90% COMPACTED SUBGRADE.
 - FINISH GRADE.
 - 6X6 10X10 W/M @ MID SLAB.



NOTE: ALL NEW CONSTRUCTION SHALL ADHERE TO CURRENT & D.A. STANDARDS

EXIST. EQUIP. (TYP.)

EXIST. BOULEVARDS (TYP.)

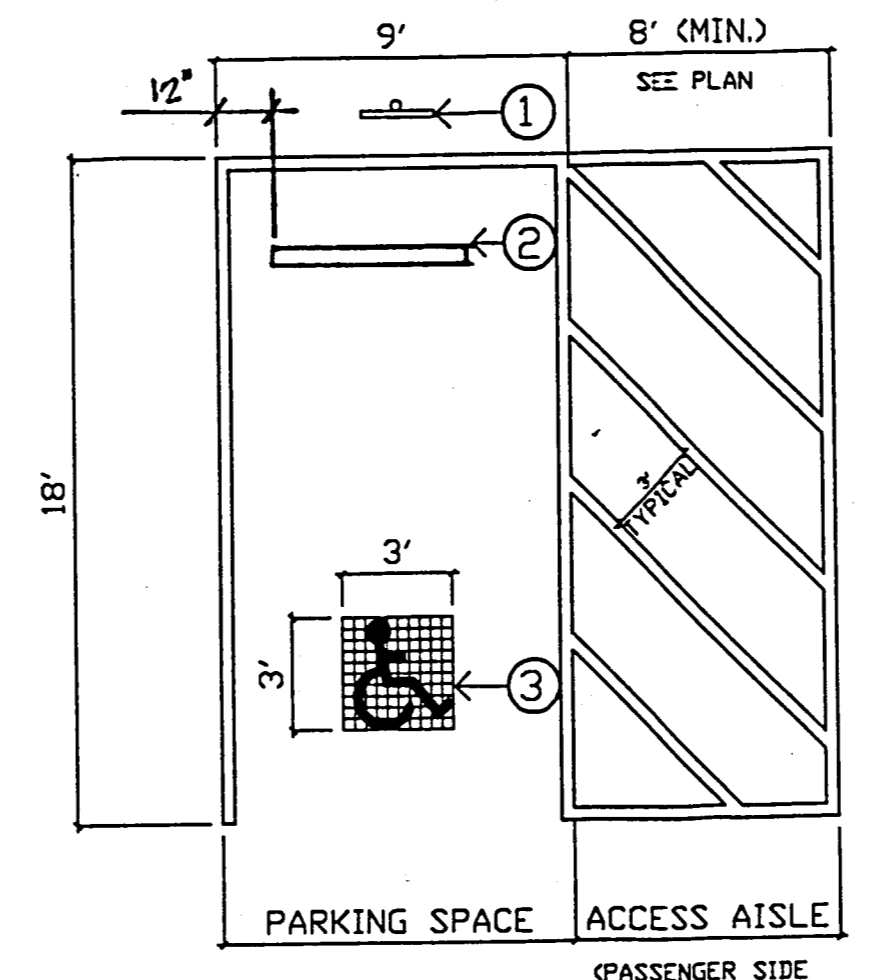
EXIST. TOT LOT SLABS

EXIST. CATCH BASIN (VERIFY LOCATION)

CONTRACTOR SHALL REMOVE 2" OF EXIST. CONCR. SAND & REPLACE WITH 1/2" DEEP MIN. SMOOTHED WOOD FLOOR SURFACING.

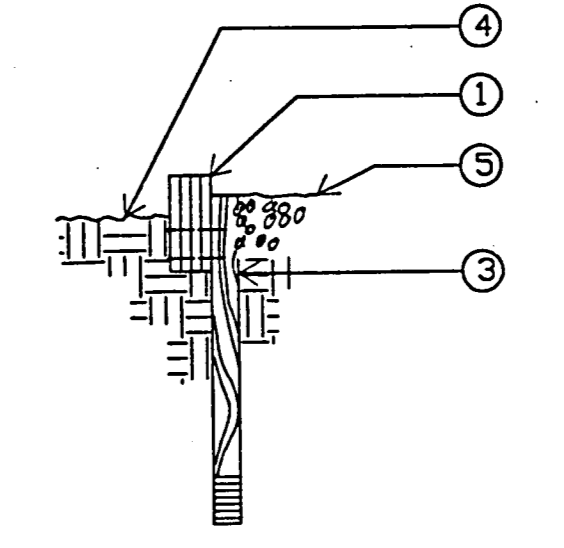
CONTRACTOR SHALL CONSTRUCT CONC. ACCESS POINT TO WOOD MULCH. PER DETAIL H

NOTE: CONTRACTOR SHALL CLEAR EXIST. CATCH BASINS WITHIN TOT-LOT AREA PRIOR TO PLACEMENT OF FILTER FABRIC



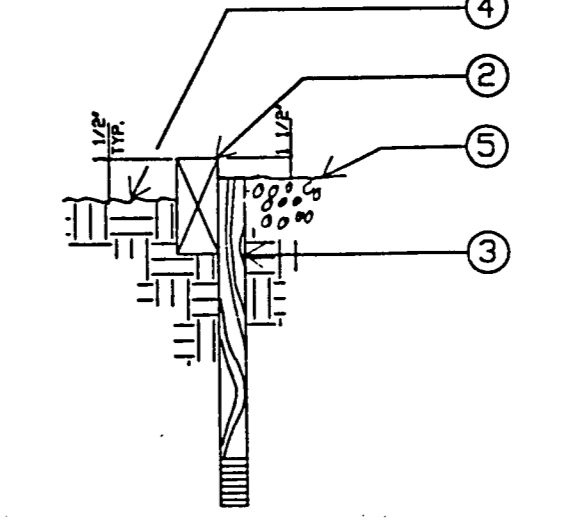
- LEGEND
- REFLECTORIZED SIGN (7" SQ. IN. MIN.) ALSO "VAN ACCESSIBLE" SIGN IF A VAN SPACE. SEE PLAN FOR LOCATION.
 - PARKING BUMPER.
 - PROFILE VIEW OF WHEELCHAIR W/ OCCUPANT. GRID SHOWN FOR LAYOUT PURPOSES ONLY.
- NOTE: ALL STRIPING TO BE PAINTED APPROVED BLUE.

RADIUS'D SECTIONS



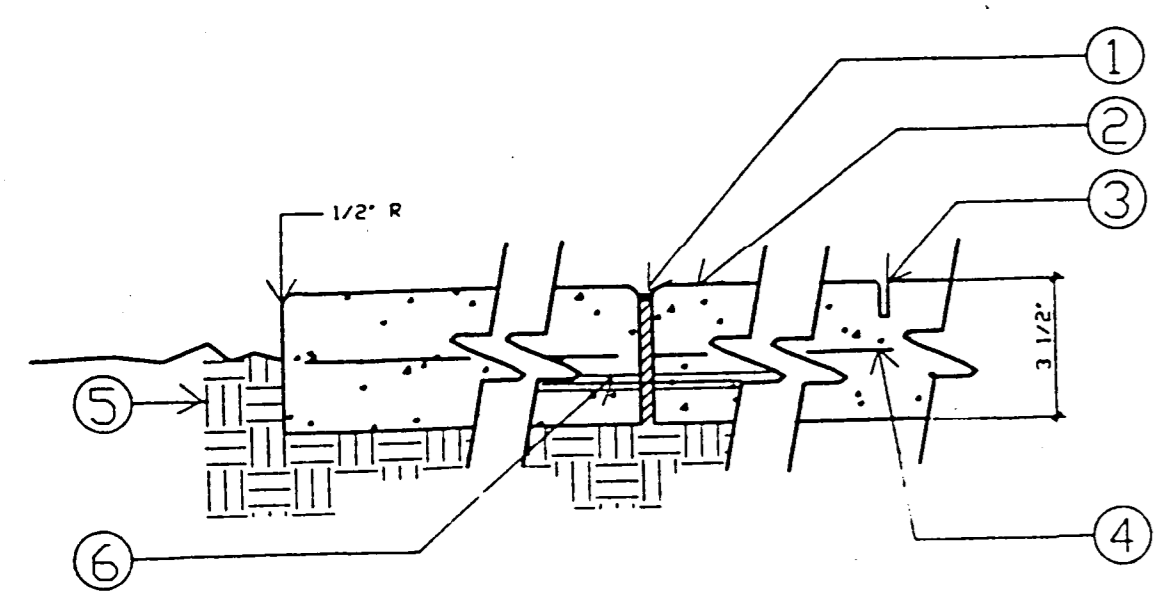
- LEGEND
- 3/8" THK. REDWOOD BENDER BOARD LAMINATED TO 1/2" THK.
 - 2x4 REDWOOD HEADER.
 - 1x2x12" REDWOOD STAKE @ 4'-0" MAX. SECURE WITH (2) 6D NAILS.
 - FINISH GRADE, TURF PLANTING.
 - FINISH GRADE, MULCH - 12"

STRAIGHT SECTIONS

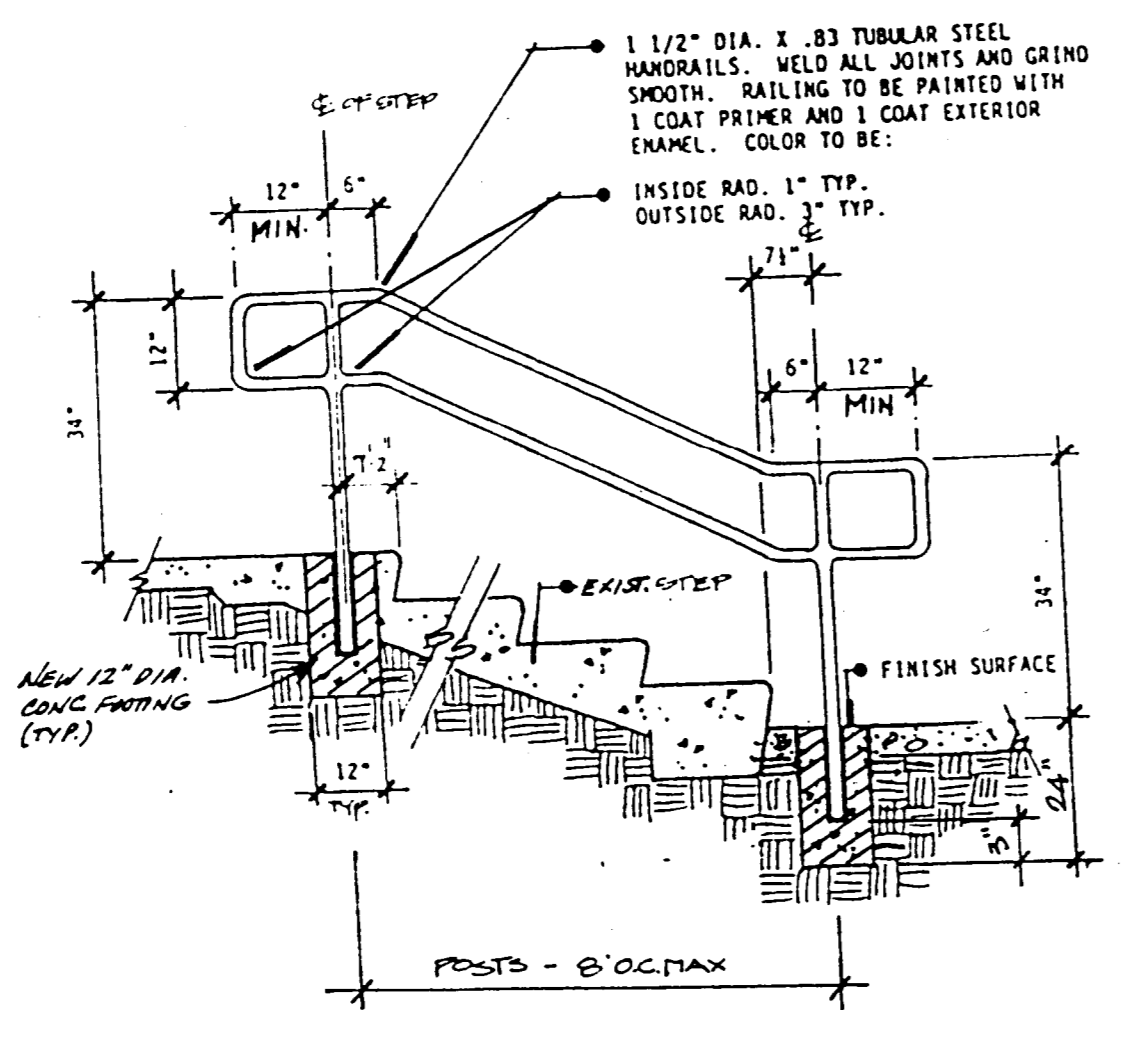


K CONCRETE PAVING

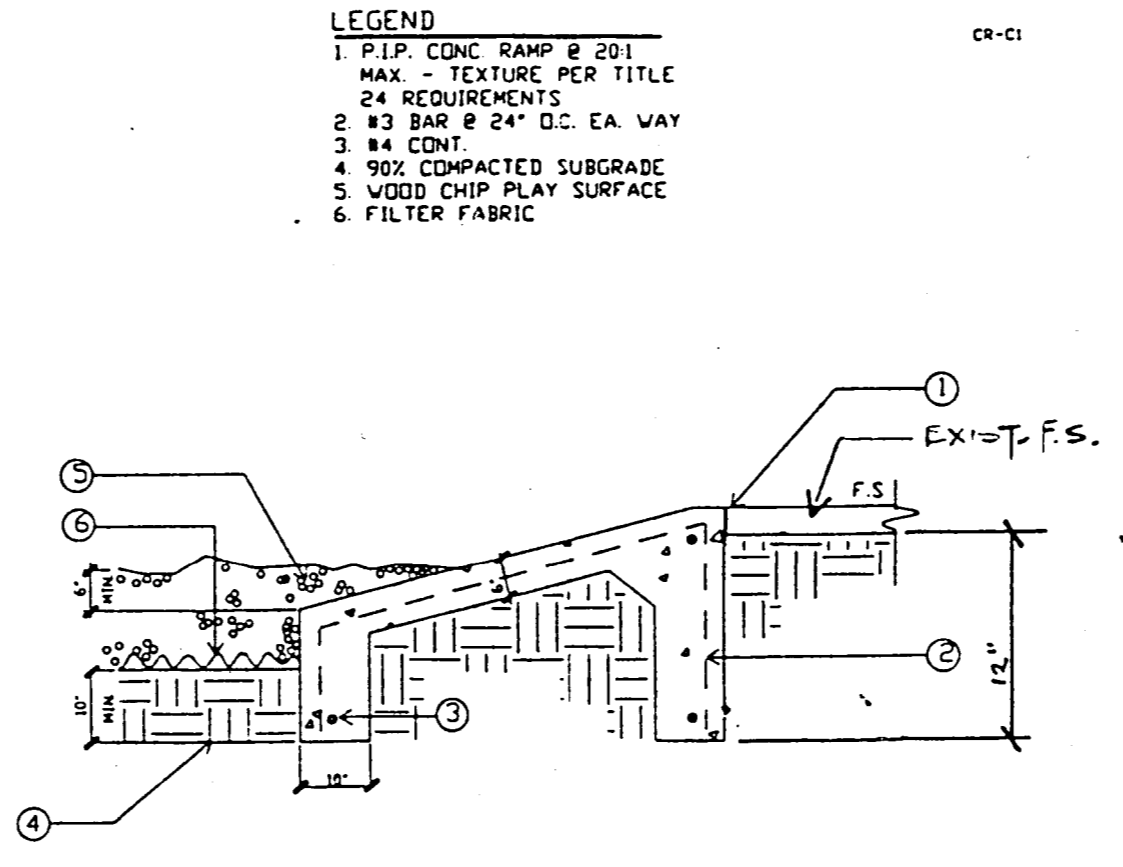
- LEGEND
- 1/4" POLY FELT EXPANSION JOINT.
 - FINISH SURFACE - SEE CONSTRUCTION PLAN FOR FINISH.
 - 1/4" WIDE BY 2" DEEP MIN. SCORE LINE W/ 3/8" R TOP AND EDGES.
 - 6" X 6" X 10" X 10" E/W/M CENTERED IN PAVING.
 - 90% COMPACTED SUBGRADE.
 - 3" X 18" LONG DDVEL W/ 1/2" SCH 40 SLEEVE IN ONE PAD ONLY.



G HESSE TOT-LOT

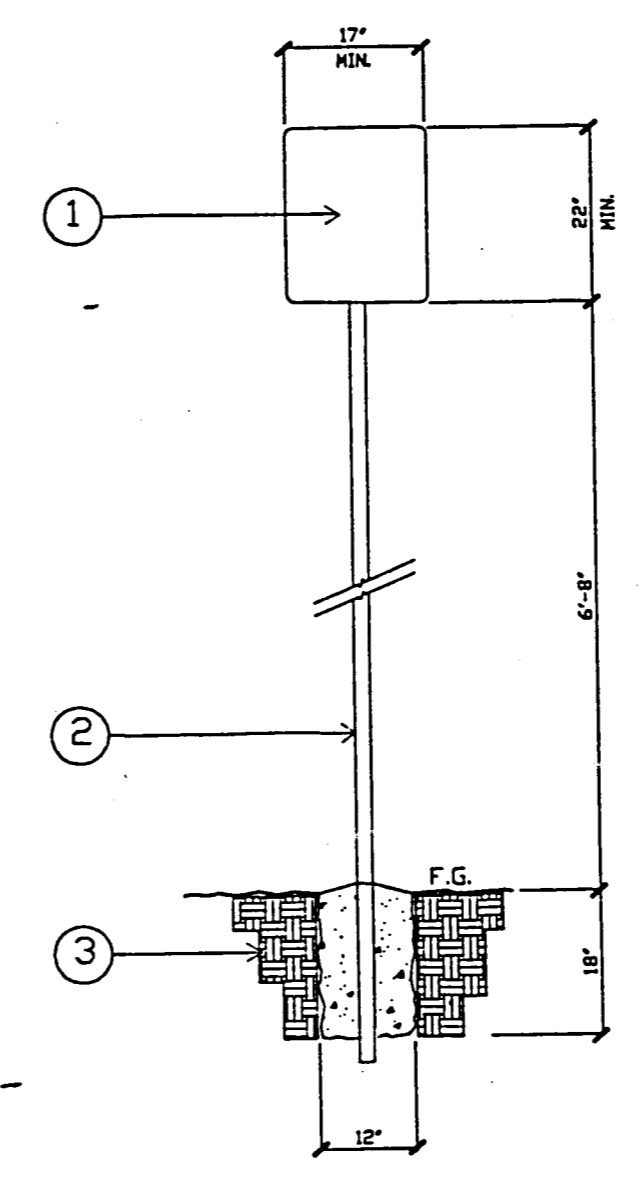


- LEGEND
- 1 1/2" DIA. X .83 TUBULAR STEEL HANDRAILS. WELD ALL JOINTS AND GRIND SMOOTH. PAINTING TO BE PAINTED WITH 1 COAT PRIMER AND 1 COAT EXTERIOR ENAMEL. COLOR TO BE:
 - INSIDE RAD. 1" TYP.
 - OUTSIDE RAD. 1" TYP.
 - EXIST. CURB
 - FINISH SURFACE
 - POSTS - @ 6' MAX



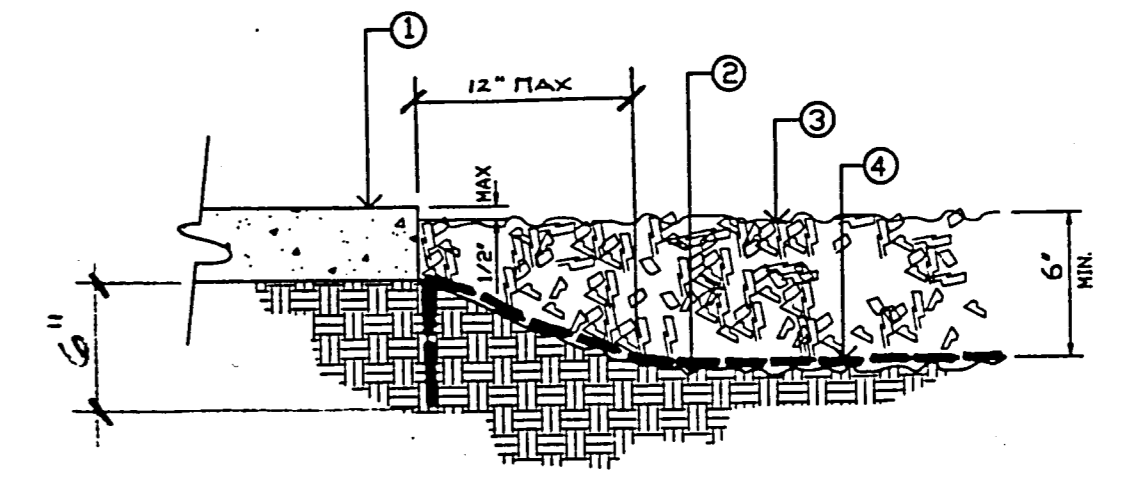
- LEGEND
- P.P. CONC. RAMP @ 201 MAX. TEXTURE PER TITLE.
 - 24 REQUIREMENTS.
 - #3 BAR @ 24" O.C. EA. WAY.
 - 14" CONC.
 - 90% COMPACTED SUBGRADE.
 - WOOD CHIP PLAY SURFACE.
 - FILTER FABRIC.

D VAN ACCESSIBLE SPACE



- LEGEND
- ONE INCH HIGH TEXT SHALL READ AS FOLLOWS: UNNUMBERED VEHICLES NOT DISPLAYING DISTINGUISHING PLACARDS ON LICENSE PLATES ISSUED FOR PHYSICALLY HANDICAPPED PERSONS MAY BE TOWED AWAY AT OWNER'S EXPENSE. TOWED VEHICLES MAY BE RECLAIMED AT CITY POLICE DEPARTMENT.
 - 2" DIA. GALV. STEEL POST.
 - 90% COMPACTED SUBGRADE.
- NOTE: CONTRACTOR SHALL SUBMIT SHOP DRAWINGS FOR CITY APPROVAL PRIOR TO FABRICATION.

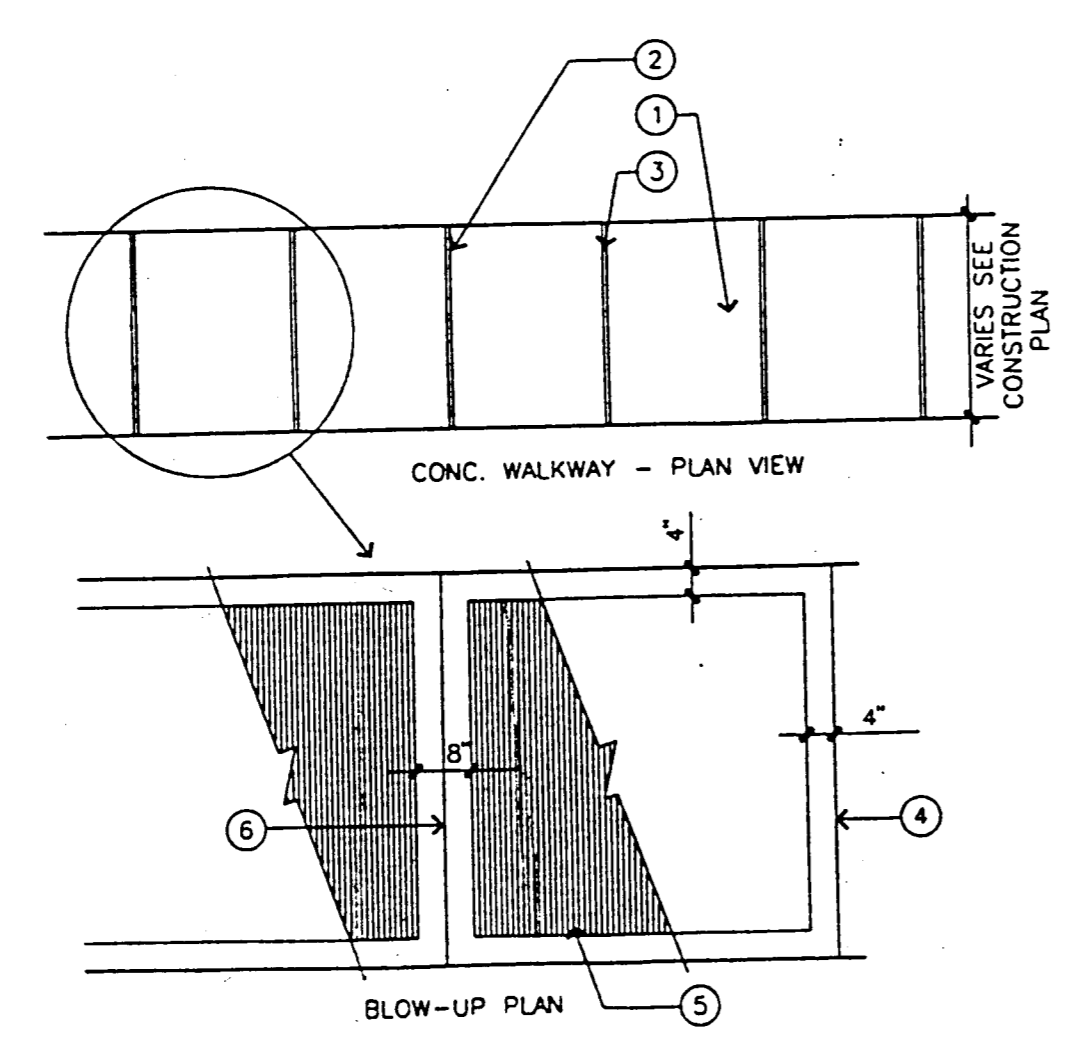
A HEADER



- LEGEND
- FINISH SURFACE.
 - 90% COMPACTED SUBGRADE.
 - FINISH GRADE OF MULCH.
 - FILTER FABRIC.

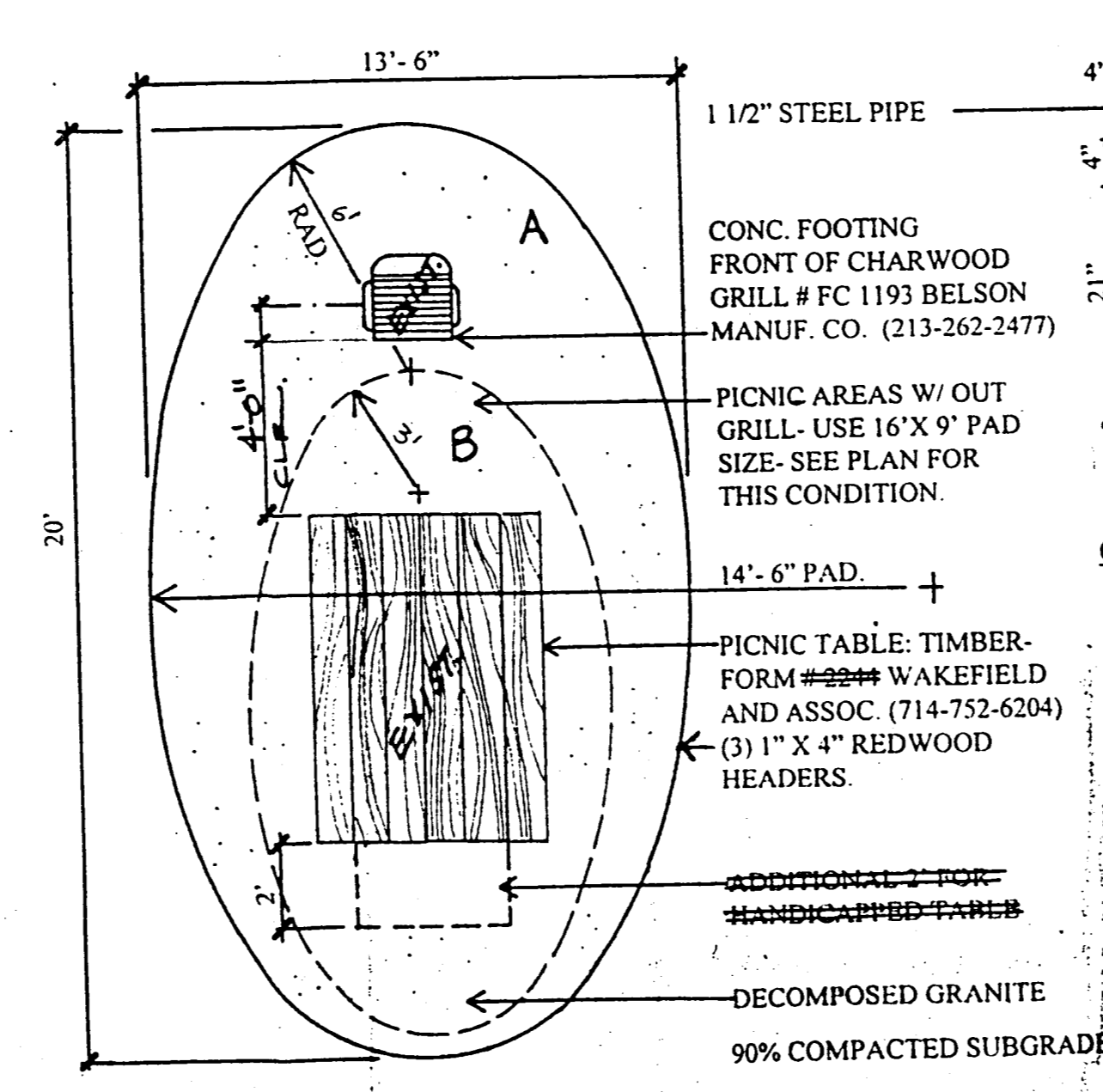
L EXP. JNT./ SCORE LINE

J CONCRETE WALK



- LEGEND
- 4" THICK, 6'-0" CONCRETE WALKWAY. COLOR TO BE: NATURAL GREY OVER 90% COMPACTED SUBGRADE.
 - EXPANSION JOINT @ 18'-0" O.C. OR AS NOTED ON PLAN.
 - SCORELINE @ 6'-0" O.C. OR AS NOTED ON PLAN.
 - 4" WIDE TOWELED EDGE BANDING.
 - MEDIUM BROOM FINISH.
 - EXPANSION OR SCORE JOINT.

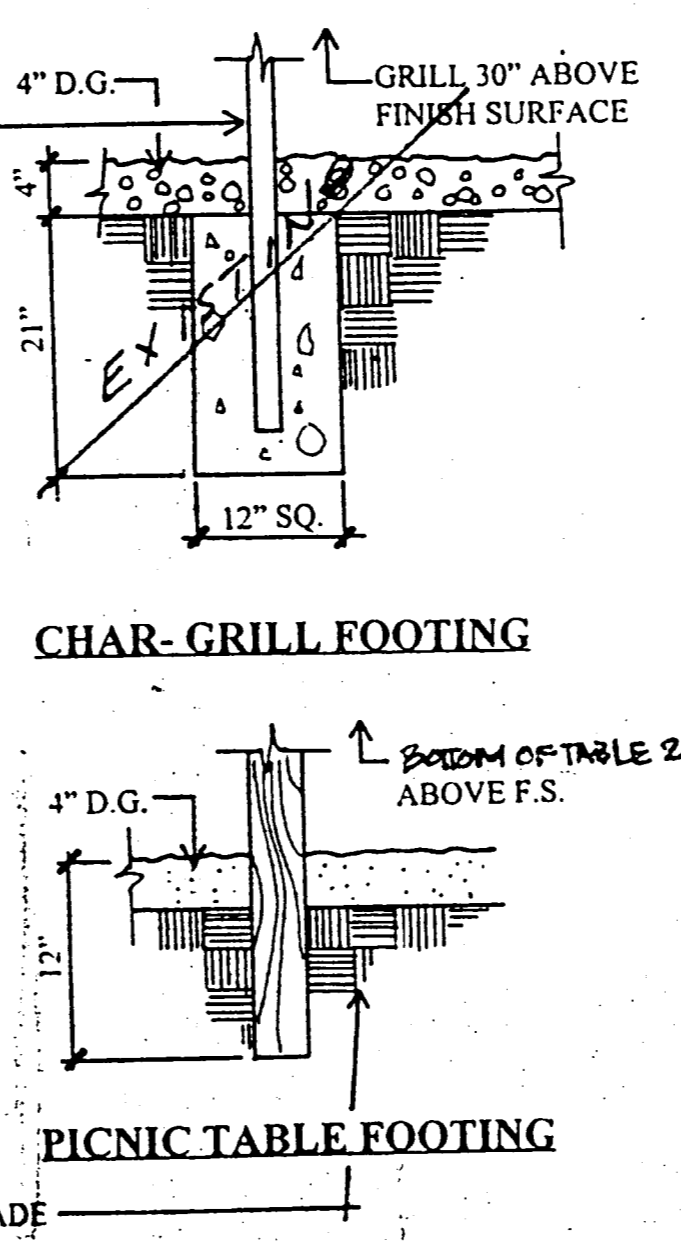
H TOT-LOT RAMP



PIC-NIC TABLE BASE PAD

F PICNIC TABLE

E TOW AWAY SIGNAGE

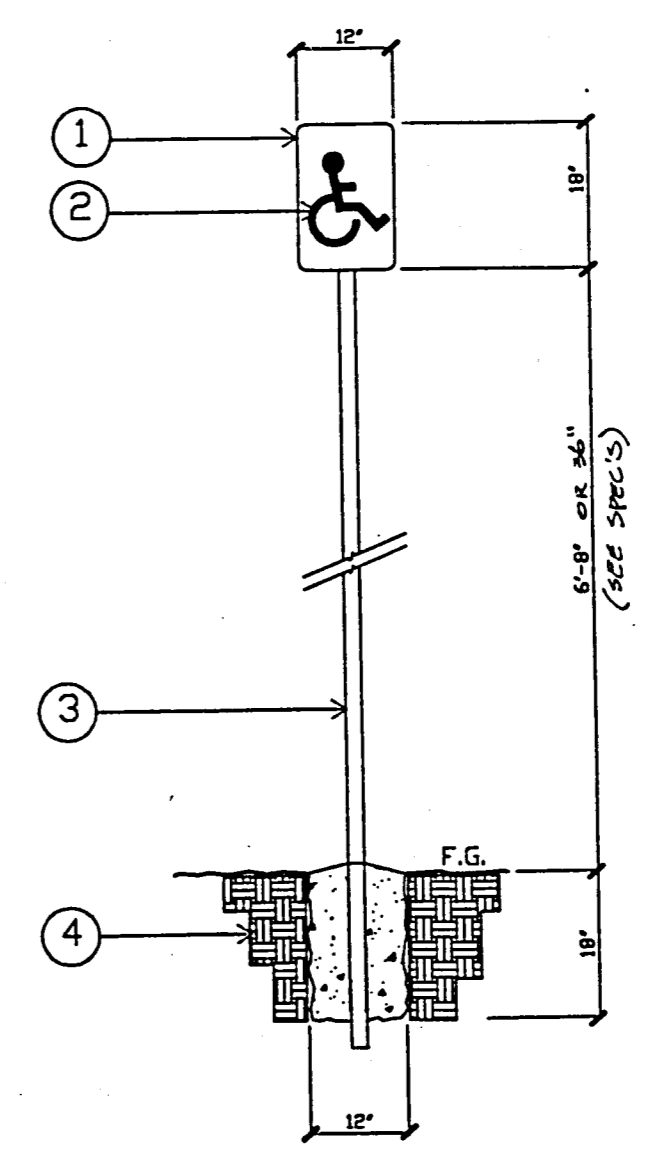


PICNIC TABLE FOOTING

* MODIFICATION NOTES

1. CONTRACTOR SHALL REINSTALL PICNIC TABLE SUCH THAT:
- A MIN. 19" KNEE SPACE IS PROVIDED @ END OF TABLE.
 - THE BOTTOM OF TABLE TOP SHALL BE 29" CLEAR FROM FINISH GRADE.

B MULCH INSTALLATION (PAR CRS)



- LEGEND
- REFLECTORIZED SIGN CONSTRUCTED OF PROCELAIN DN STEEL WITH BEADED TEXT AS REQUIRED - BLUE.
 - HANDICAP SYMBOL - PEARL WHITE.
 - 2" DIA. GALV. STEEL POST.
 - 90% COMPACTED SUBGRADE.
- NOTE: CONTRACTOR SHALL SUBMIT SHOP DRAWINGS FOR OWNER APPROVAL PRIOR TO FABRICATION.

C ADA ACCESS SIGN

Scale: N.T.S.
Drawn:
Designed:
Checked:
Date: APRIL 19, 1995
Job No. 950266-04

Revisions	Date

Sheet Title
CONSTRUCTION
DETAILS