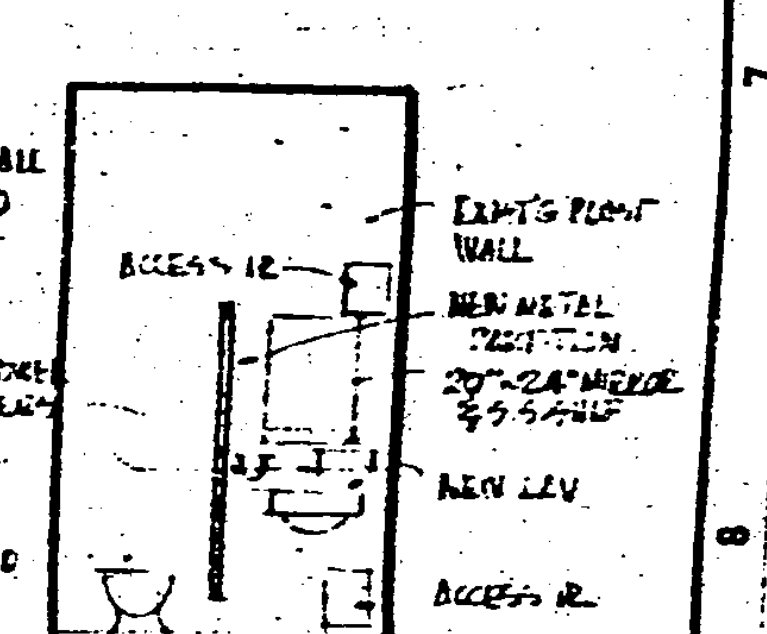
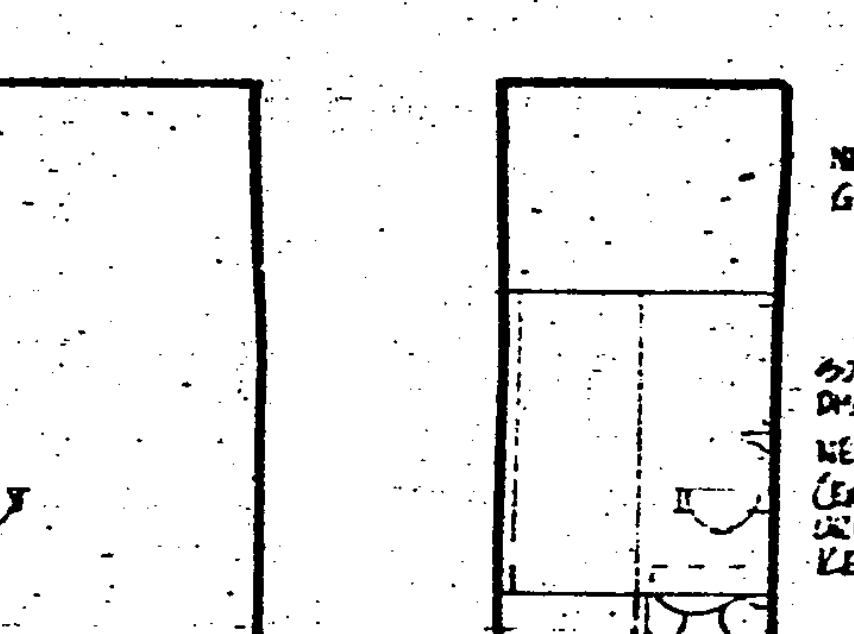
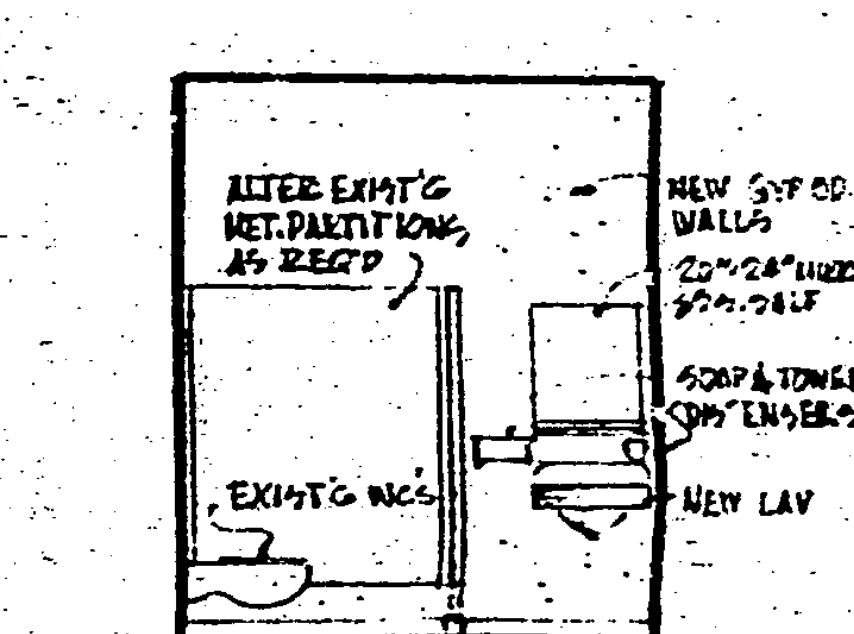
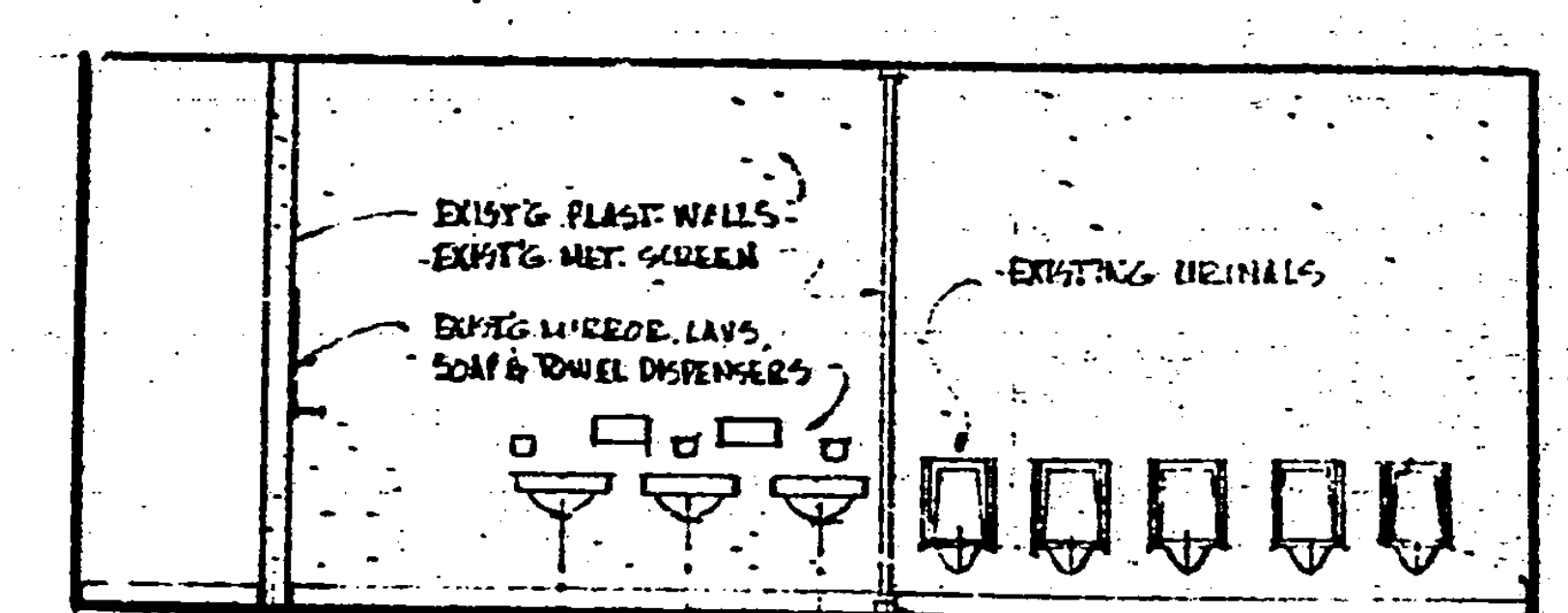
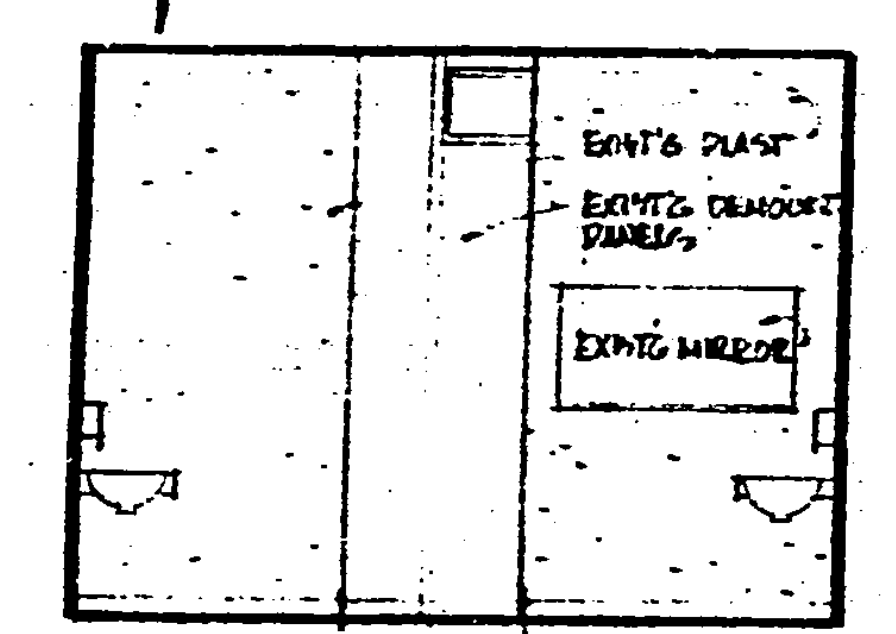
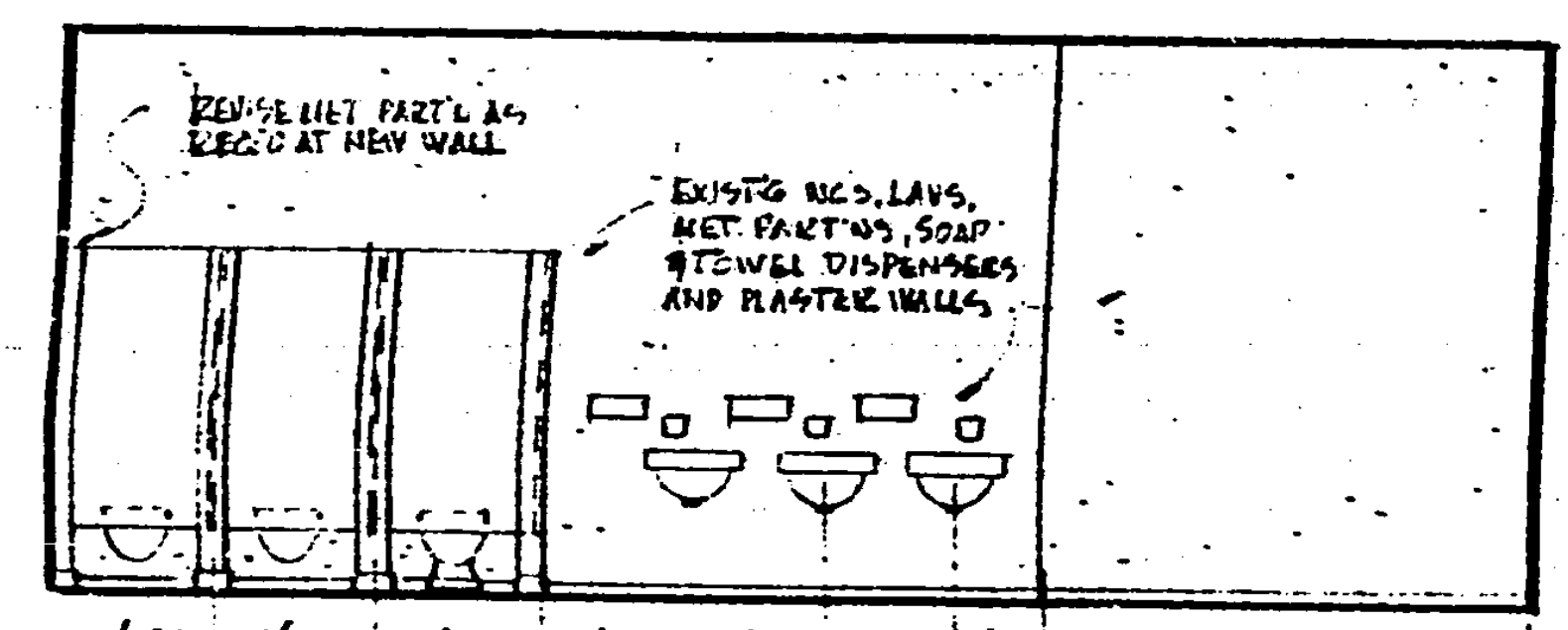
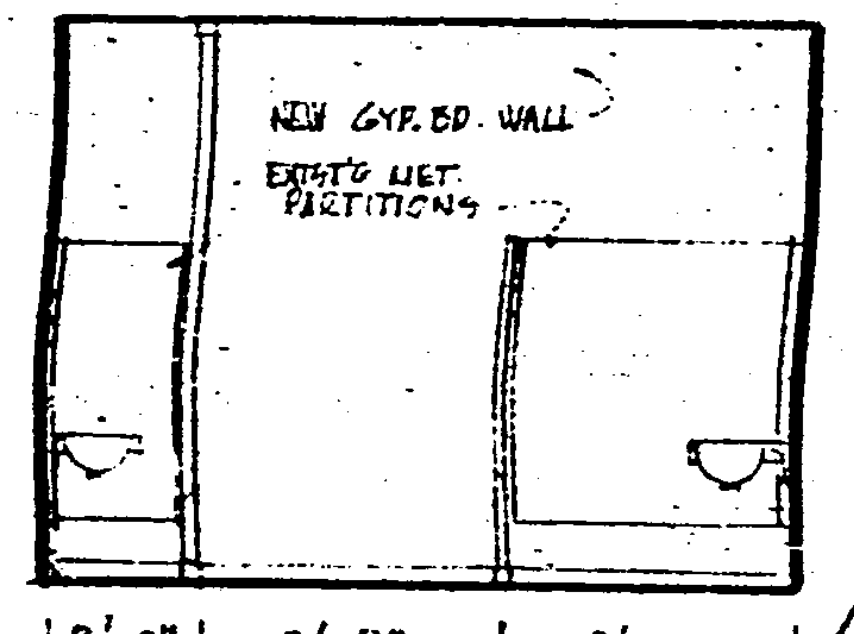


ENLARGED FLOOR PLAN - TOILETS, UNIT E
SCALE 1/4" = 1'-0"

ENLARGED FLOOR PLAN - ADMINISTRATION - UNIT A
SCALE 1/4" = 1'-0"

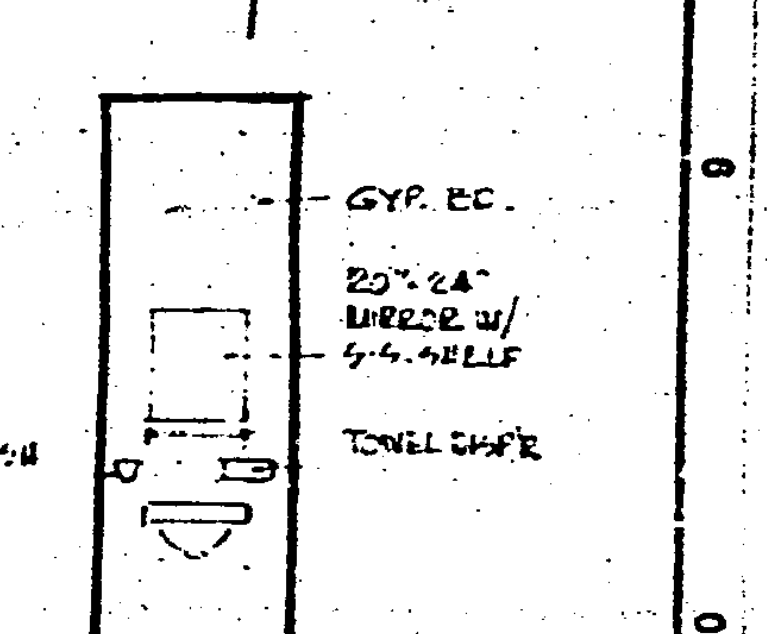
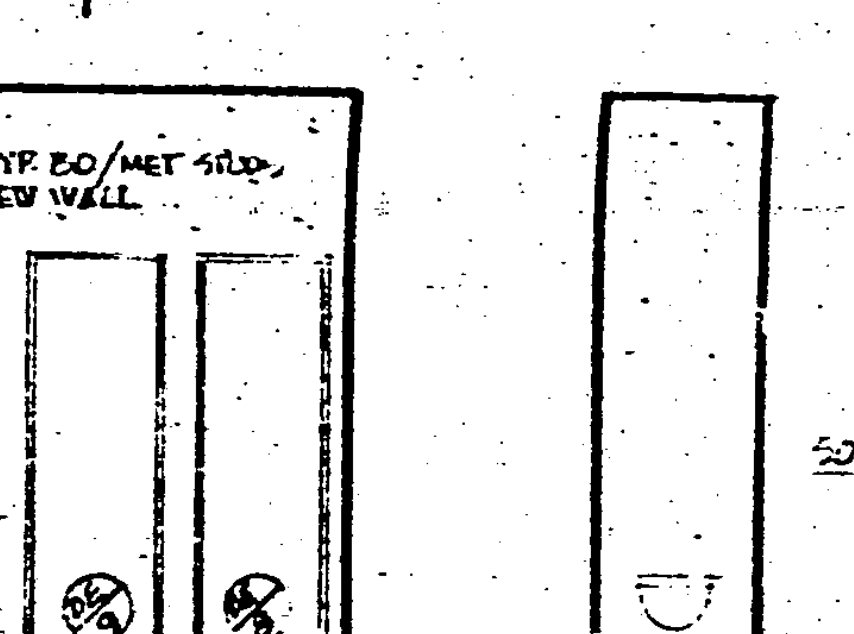
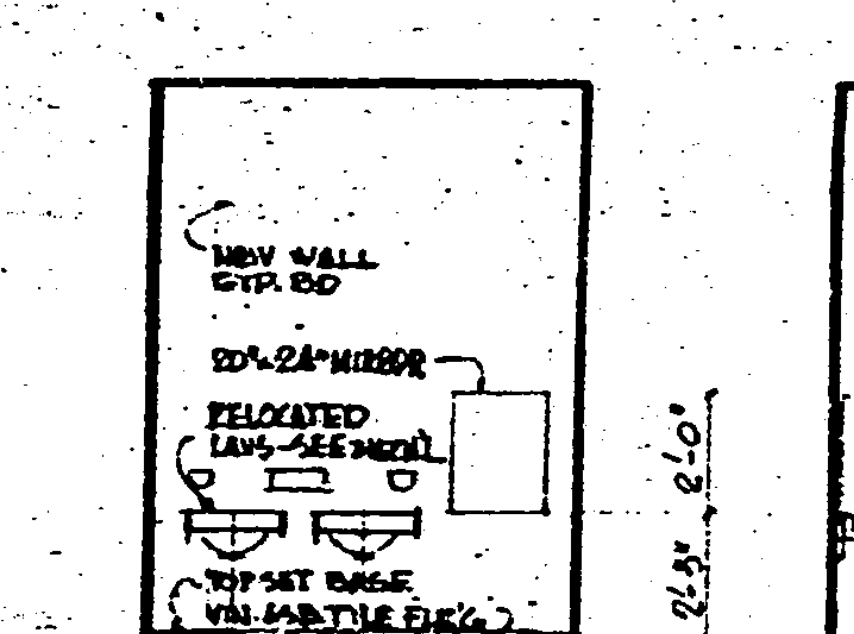
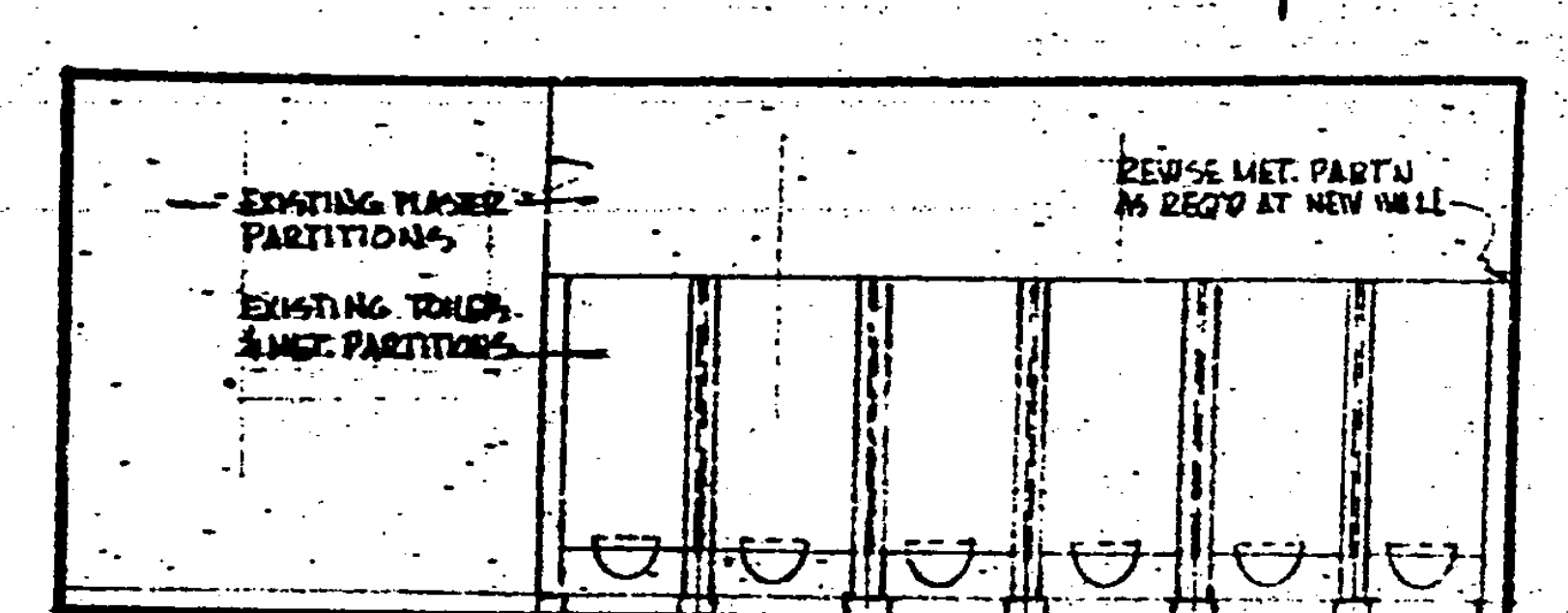
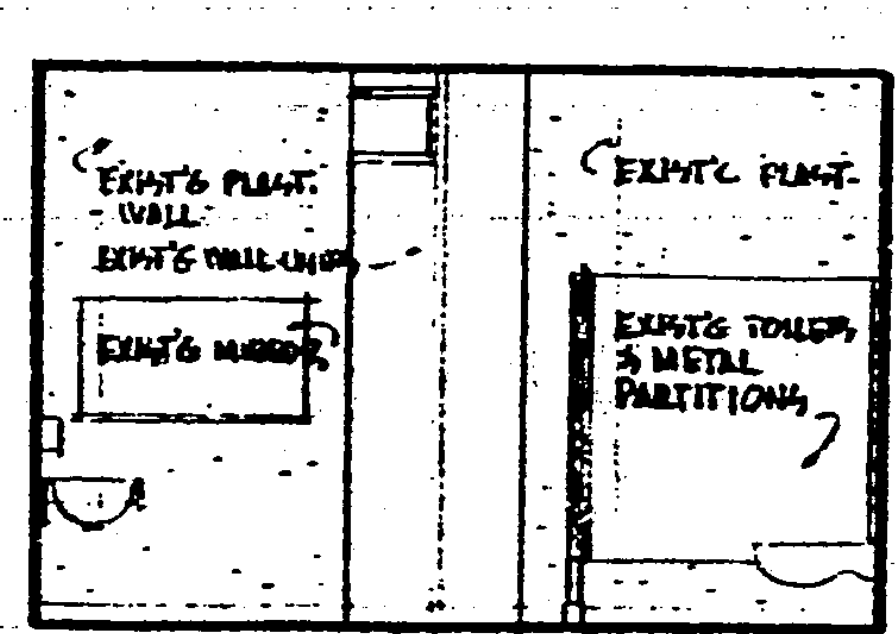
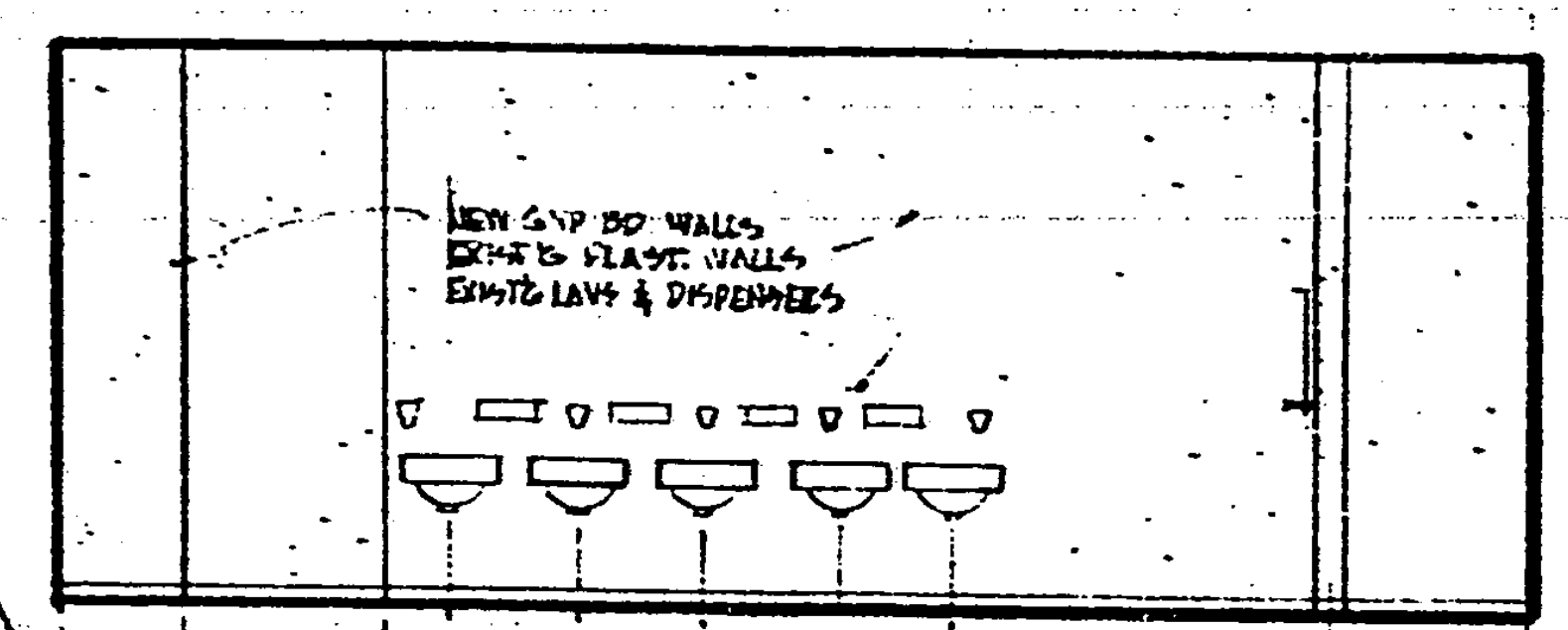
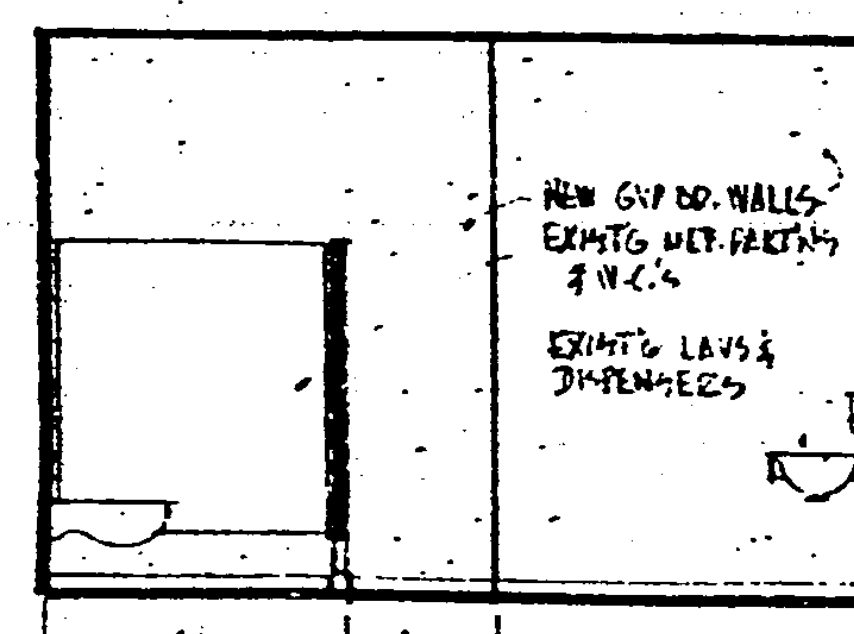
CUSTODIAN
SCALE 1/4" = 1'-0"



BOYS' TOILET

WOMEN'S TOILET

MEN'S TOILET



GIRLS' TOILET

ALCOVE

ALCOVE

Richard W. Wright
MECHANICAL ENGINEER
Charles L. Wright
ELECTRICAL ENGINEER
STRUCTURAL ENGINEER
CIVIL ENGINEER

KISTNER, WRIGHT & WRIGHT
ARCHITECTS AND ENGINEERS
LOS ANGELES, CALIFORNIA

STATE FIRE MARSHAL
STATE OF CALIFORNIA
APPROVED: *[Signature]*

28550 APPROVED: JAN 18, 1967

CONTRACTOR TO VERIFY ALL DIMENSIONS AT THE JOB
ENLARGED FLR PLAN - TOILETS, ADM - TOILET ELEVATIONS - ROOF PLANS
DATE 21 NOV 66 SHEET NO. 48
LADERS LINDA 41002
CHECKED BY C. HAYES
PALOS VERDES PENINSULA UNIFIED SCHOOL DISTRICT
ROLLING HILLS CALIFORNIA
JOB NO. 66-6 OF SHEETS