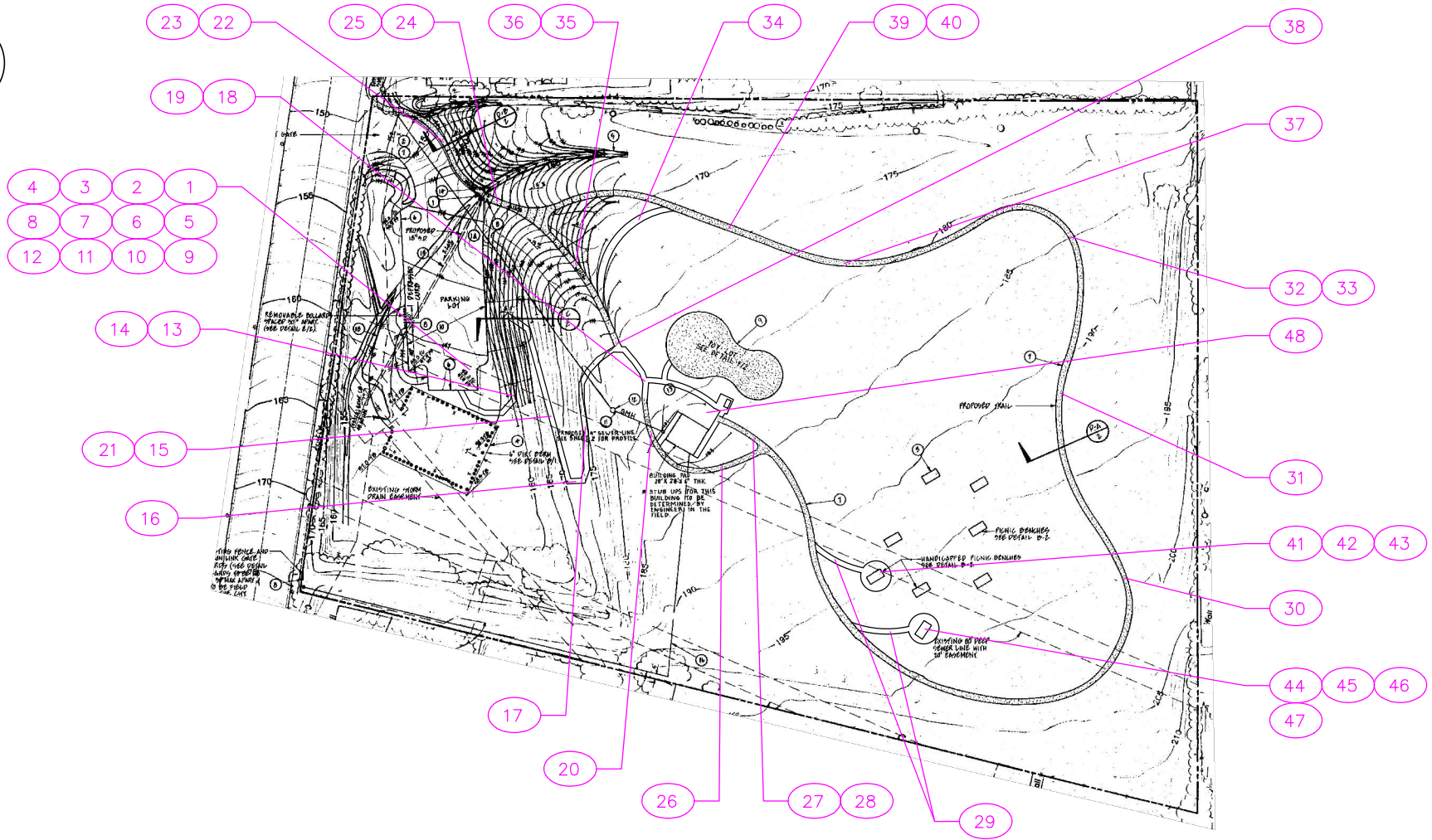
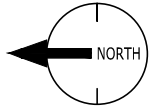


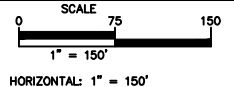
**FACILITY ID #5 - EASTVIEW PARK**  
 1700 Westmont Avenue, San Pedro, CA 90732 (City of RPV Park)



CITY OF RANCHO PALOS VERDES	
DIRECTOR OF PUBLIC WORKS	DATE

NO.	DATE	DESCRIPTION	APPROVED
REVISIONS			

DESIGNED	—
DRAWN	CV
CHECKED	ES
DATE	9/18/2019

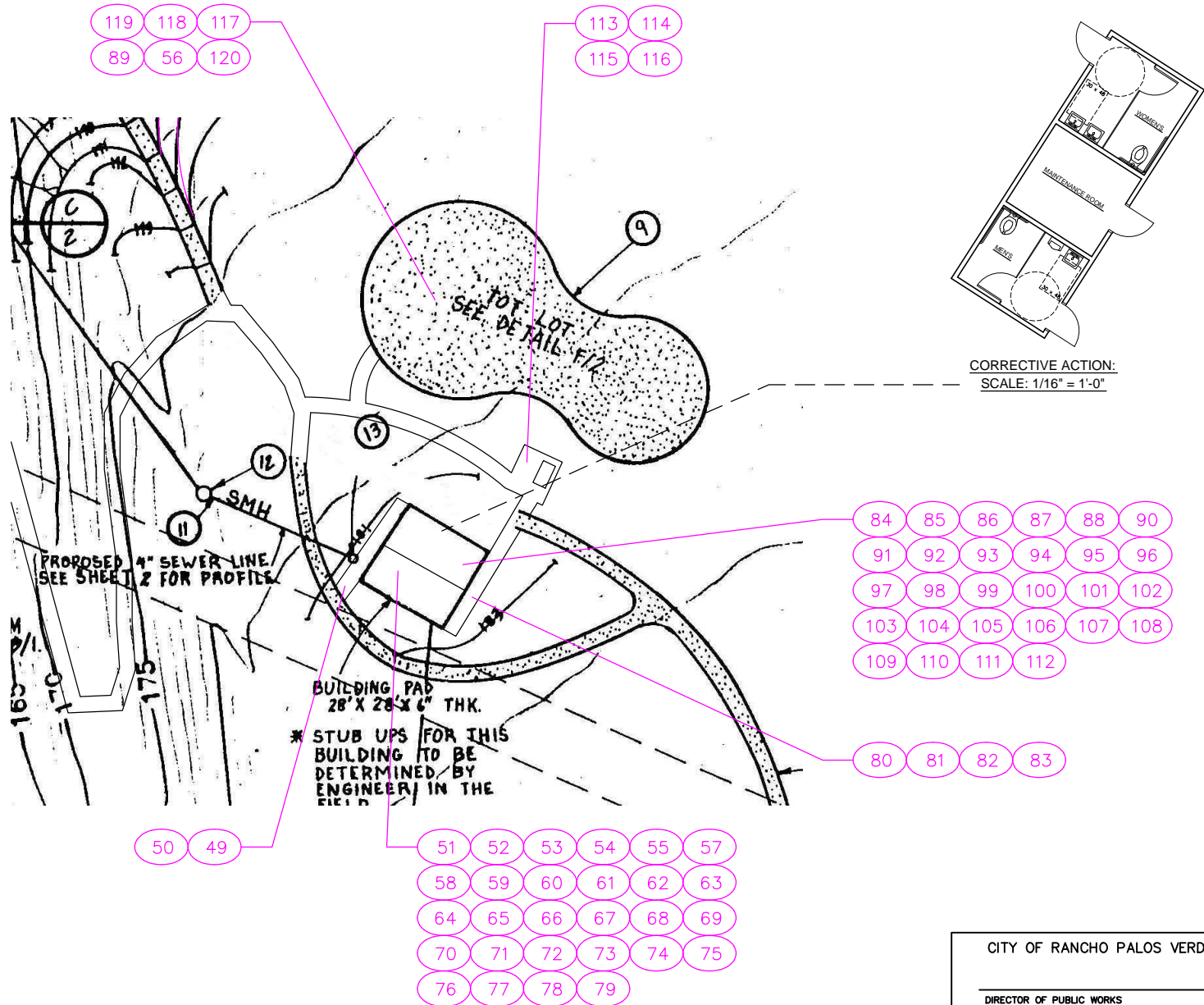
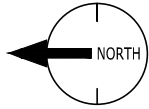


CITY OF RANCHO PALOS VERDES



CITY OF RANCHO PALOS VERDES  
 ACCESSIBILITY SELF-EVALUATION AND TRANSITION PLAN

**FACILITY ID #5 - EASTVIEW PARK**  
 1700 Westmont Avenue, San Pedro, CA 90732 (City of RPV Park)

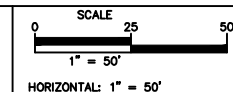


CORRECTIVE ACTION:  
 SCALE: 1/16" = 1'-0"

CITY OF RANCHO PALOS VERDES	
DIRECTOR OF PUBLIC WORKS	DATE

NO.	DATE	DESCRIPTION	APPROVED
REVISIONS			

DESIGNED --  
 DRAWN CV  
 CHECKED ES  
 DATE 9/18/2019



CITY OF RANCHO PALOS VERDES

