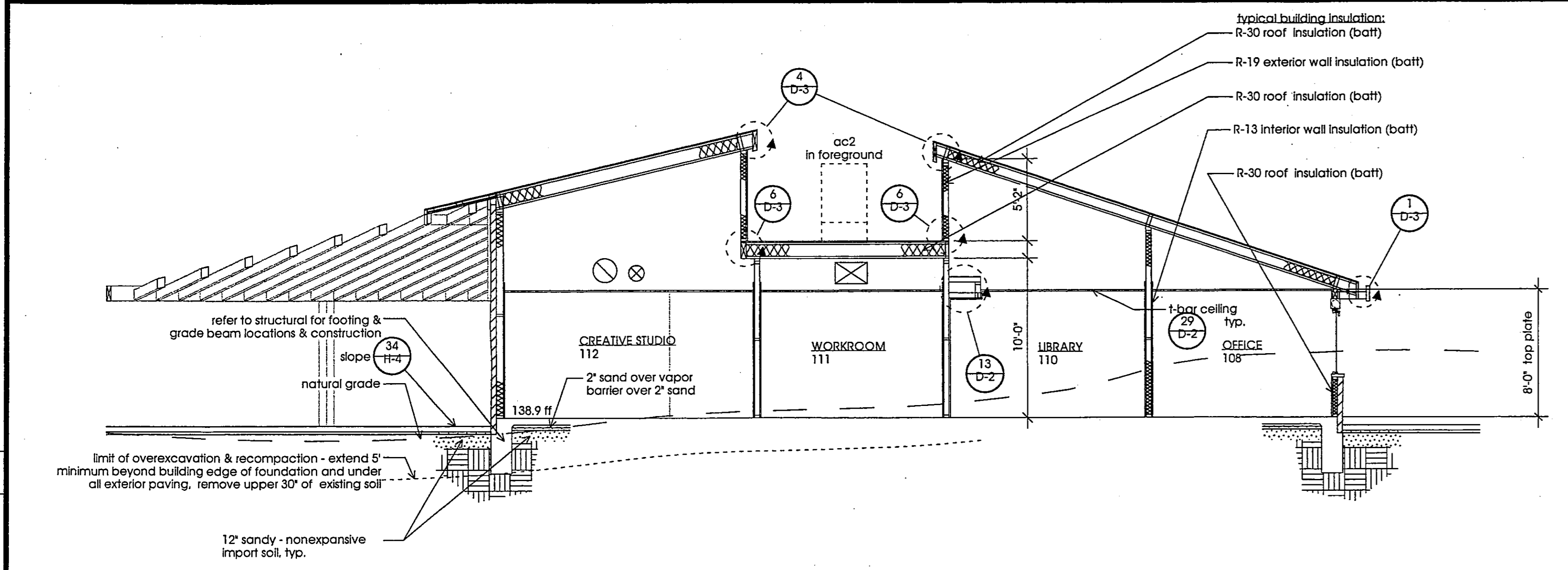
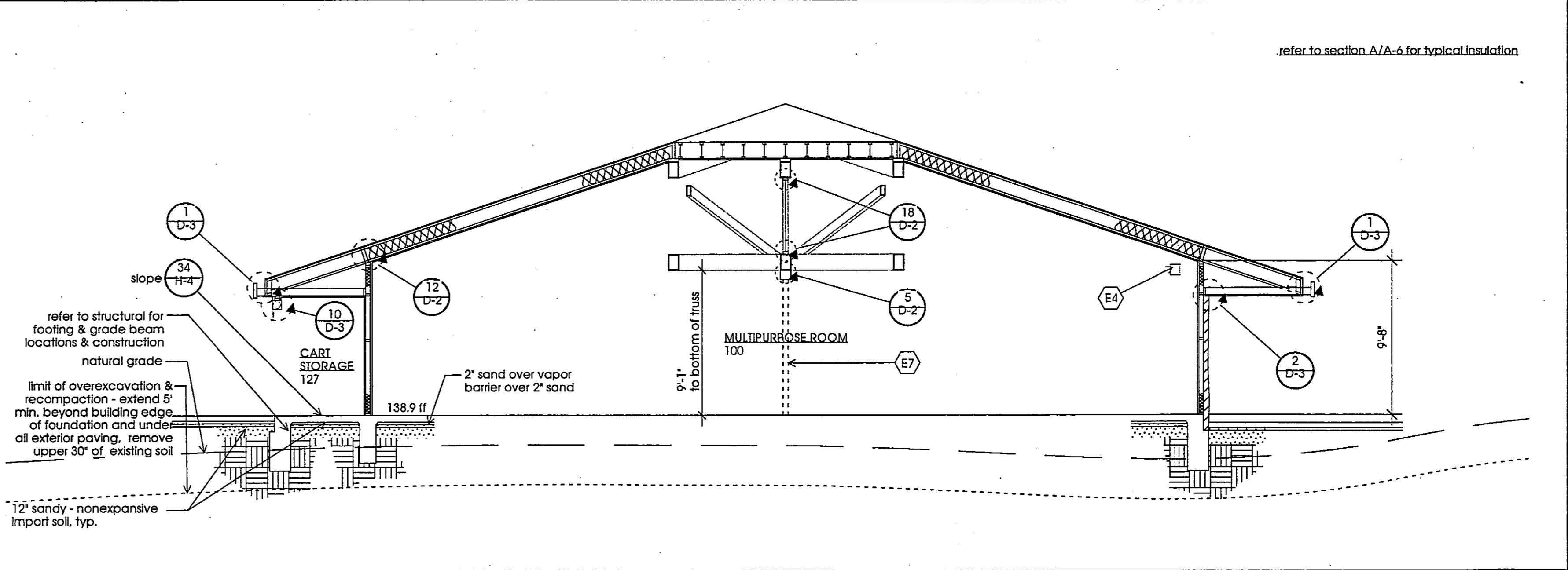


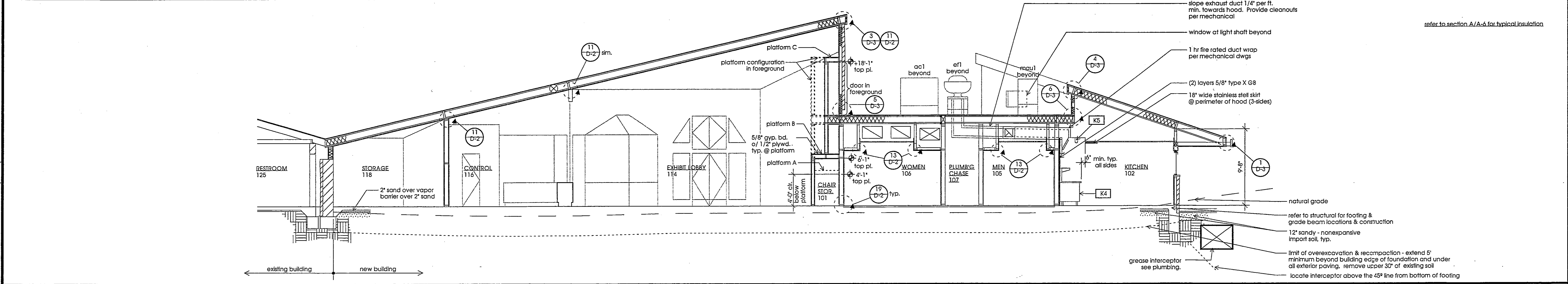
- 1. wall
- 2. doors/windows
- 3. masonry
- 4. woodwork
- 5. floor
- 6. ceiling
- 7. base
- 8. electrical
- 9. paper edges



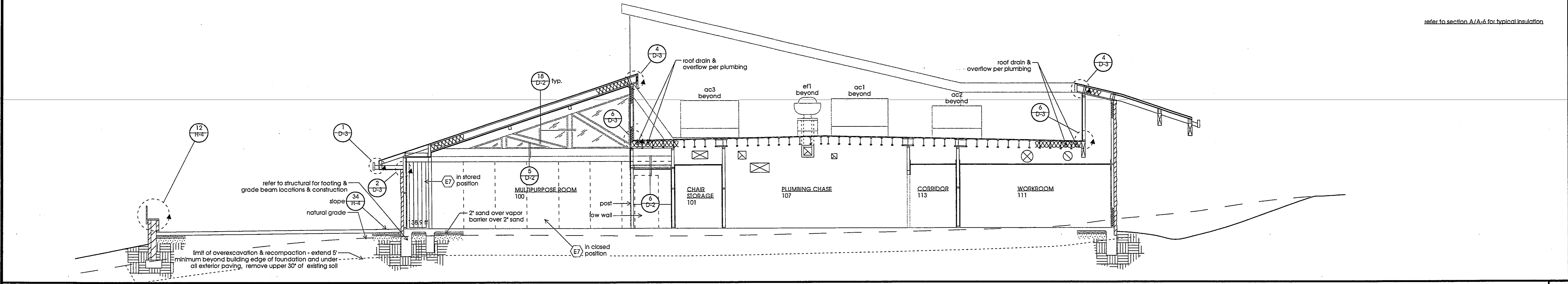
**BUILDING SECTION A** Scale: 3/16" = 1'-0"



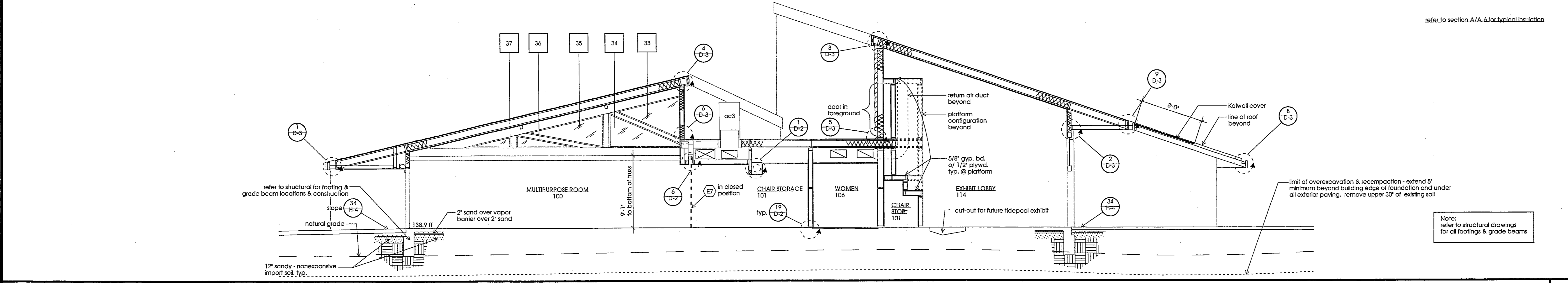
**BUILDING SECTION B** Scale: 3/16" = 1'-0"



**BUILDING SECTION C** Scale: 3/16" = 1'-0"



**BUILDING SECTION D** Scale: 3/16" = 1'-0"



**BUILDING SECTION E** Scale: 3/16" = 1'-0"

**RON YEO, FAIA ARCHITECT, INC.**  
 500 JASMIN AVENUE, CORONA DEL MAR  
 CALIFORNIA 92625 P: 949-644-8111 F: 949-644-0449  
 PATRICK MARR, AIA, PE, ASSOCIATE ARCHITECT



12/23/03 update revisions

**POINT VICENTE INTERPRETIVE CENTER EXPANSION**  
 31501 Palmdale Drive West  
 Rancho Palmdale, CA

**Building Sections**

DRAWN: PM/MS  
 CHECKED: RY  
 DATE: 2/1/99  
 SCALE: 1/8" = 1'-0"  
 JOB NO.: 95-100  
 SHEET: **A-6**  
 11 OF 61 SHEETS

Ron Yeo, Architect Inc. expressly reserves all rights in this drawing. No part of this drawing may be reproduced, stored in a retrieval system, or transmitted in any form or by any means, electronic, mechanical, photocopying, recording, or by any information storage and retrieval system, without the prior written permission and consent of Ron Yeo, Architect Inc.

PVC Expansion Building Plans  
 Construction Set