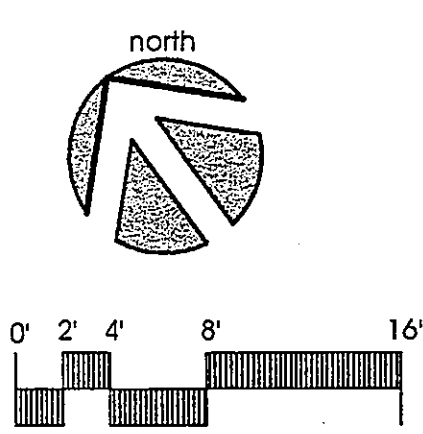
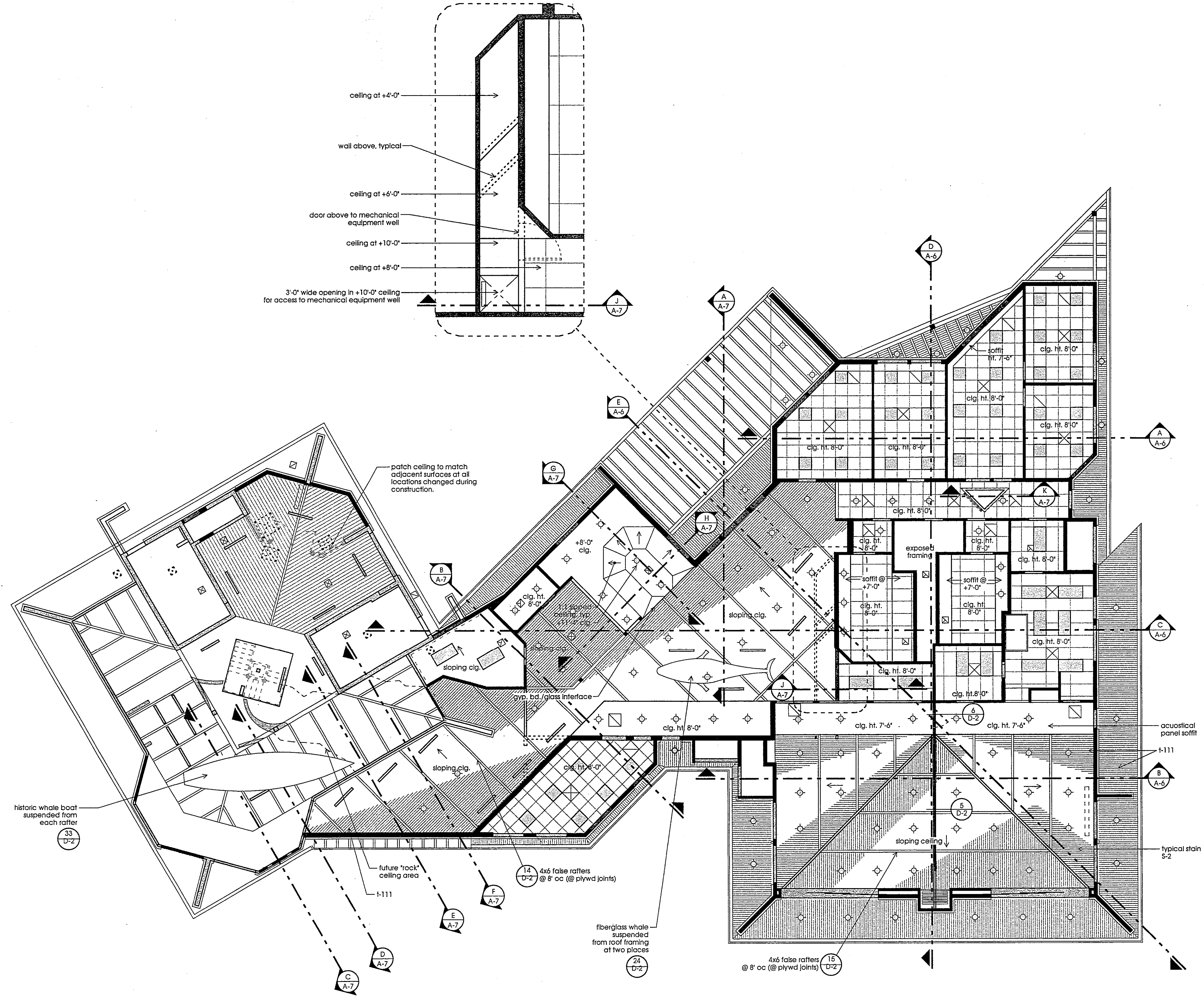
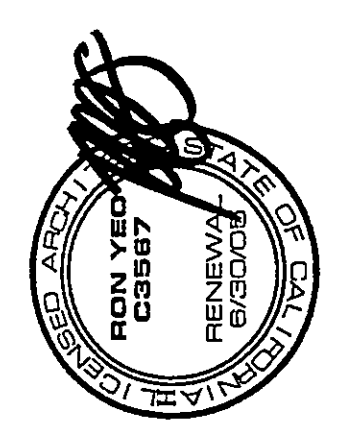


7. border
8. paper edges
10. scratch

**PARTIAL REFLECTED CEILING PLAN
AT CHAIR & TABLE STORAGE 101**
1/8" = 1'-0"



RON YEO, FAIA ARCHITECT, INC.
500 JASMINE AVENUE, CORONA DEL MAR
CALIFORNIA 92625 P: 949-364-8111 F: 949-644-0449
PATRICK MARR, AIA, PE, ASSOCIATE ARCHITECT



12/23/03 update revisions

**POINT VICENTE INTERPRETIVE
CENTER EXPANSION**
31501 Palos Verdes Drive West
Rancho Palos Verdes, CA

**Reflected
Ceiling Plan**

DRAWN
PM/MG
CHECKED
RY
DATE
2/11/99
SCALE
1/8" = 1'-0"
JOB NO.
95-123
SHEET

A-13

26 of 49 SHEETS

These drawings are prepared by Ron Yeo, FAIA, Architect, Inc. and are the property of Ron Yeo, FAIA, Architect, Inc. They are not to be changed or copied in any way without the written permission and consent of Ron Yeo, FAIA, Architect, Inc.

P.V.C. EXPANSION Building Plans
 Construction Set
 Dec. 2005