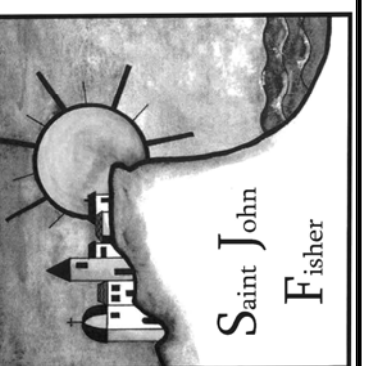


St. John Fisher
 5448 Crest Road
 Rancho Palos Verdes, CA 90275



INTERIORS
HYNDMAN & HYNDMAN
 ARCHITECTURE
 2611 SOUTH COAST HIGHWAY 101 - SUITE 201, CARDIFF, CA 92007 - (760)934-2595

REVISIONS:
 01/08 3RD SUBMITTAL



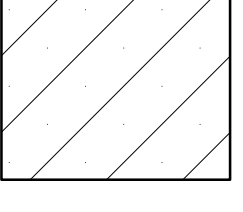
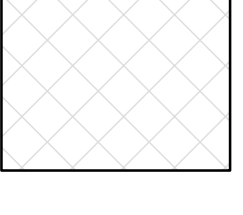

ADMINISTRATION
 BUILDING
 FLOOR PLAN

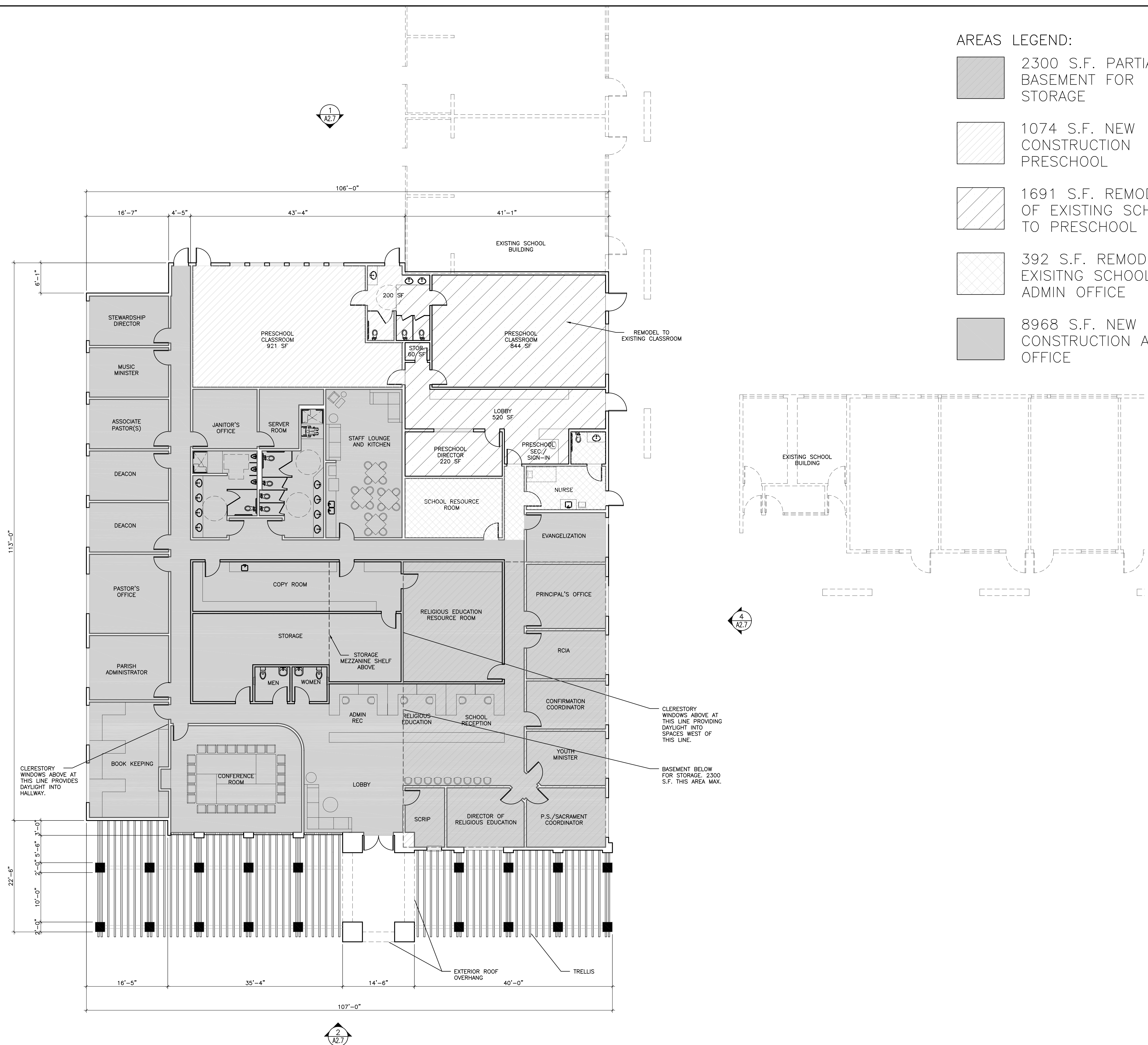
Date JANUARY 2008

Sheet

A2.5
 Of Sheets

AREAS LEGEND:

-  2300 S.F. PARTIAL BASEMENT FOR STORAGE
-  1074 S.F. NEW CONSTRUCTION PRESCHOOL
-  1691 S.F. REMODEL OF EXISTING SCHOOL TO PRESCHOOL
-  392 S.F. REMODEL OF EXISTING SCHOOL TO ADMIN OFFICE
-  8968 S.F. NEW CONSTRUCTION ADMIN OFFICE



1 ADMINISTRATION BUILDING FLOOR PLAN
 SCALE: 1/8"=1'-0"

