

RECEIVED
City of Rancho Palos Verdes

JUN 15 2015

PUBLIC WORKS DEPARTMENT

Statement of Qualifications



Palos Verdes Peninsula Land Conservancy
916 Silver Spur Road #207
Rolling Hills Estates, CA 90274
Phone (310) 541-7613
Fax (310) 541-7623

www.pvplc.org

**PALOS VERDES PENINSULA
LAND CONSERVANCY**

*PRESERVING LAND AND RESTORING
HABITAT FOR THE ENJOYMENT AND
EDUCATION OF ALL*

ORGANIZATION OVERVIEW

The Palos Verdes Peninsula Land Conservancy (PVPLC) is a 501(c)(3) nonprofit organization. PVPLC works cooperatively with cities, property owners and environmental groups, locating funds for purchasing land, providing tax benefits for land donation, restoring habitat, and promoting the conservation of natural open space. We cover the geographic Palos Verdes Peninsula.

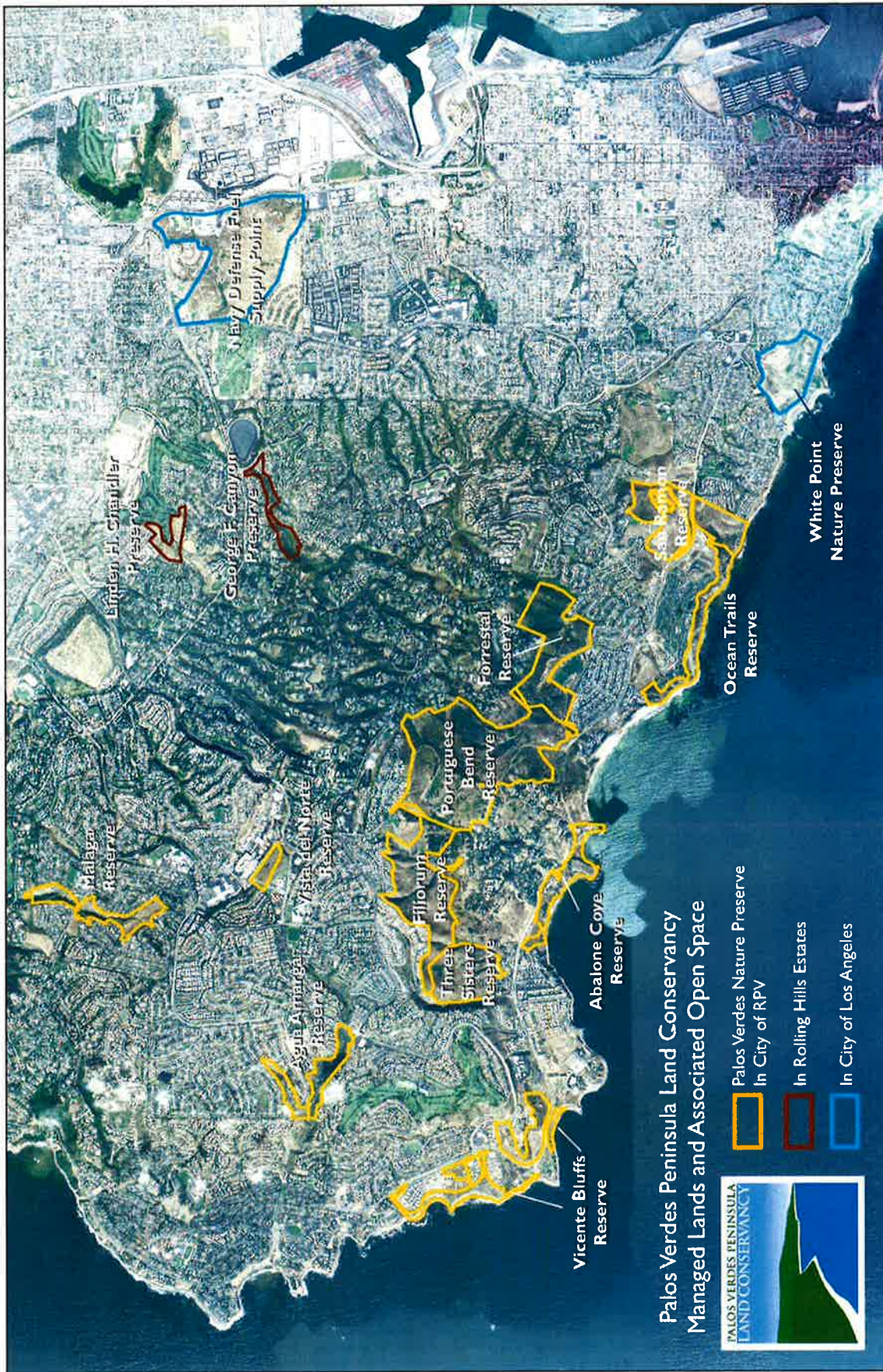
For over two decades, PVPLC has been committed to carrying out its mission of “preserving land and restoring habitat for the education and enjoyment of all.” PVPLC has received more than two million dollars in grants from the State of California and the federal government to do habitat restoration on its properties and the properties it manages. The organization’s history of open space preservation includes:

- the acquisition of the 20-acre Lunada Canyon Preserve in 1992;
- preservation of the 28-acre Chandler Preserve in 1993, in cooperation with the City of Rolling Hills Estates;
- brokering a deal to preserve the 160-acre Forrestal Property in 1996, and;
- playing an instrumental role in purchase of Portuguese Bend and Filiorum that led to the creation of the Palos Verdes Nature Preserve, more than 1,400 acres of rolling hills, steep canyons and rock outcrops; the largest previously unprotected coastal open space between Laguna Beach and the Santa Monica Mountains. PVPLC manages the unique habitat according to the Draft Natural Communities Conservation Plan;
- improving and operating the 102-acre White Point Nature Preserve in San Pedro under a 25-year management agreement with the City of Los Angeles.

PVPLC staff is composed of professionals with an extensive conservation background and technical credentials. The Senior Stewardship team has experience in planning, monitoring, and documentation of successful habitat restoration sites and conservation easements on the PV Peninsula as well as in other parts of coastal southern California.

A visit to the website at www.pvplc.org will provide more information on the organization, its staff, and many programs.





SERVICES PROVIDED

PVPLC provides a range of land management services, including:

- Open Space Acquisition and Preservation
- Restoration Planning
- Habitat Restoration
- Biological Monitoring
- Project Oversight
- Subcontractor Management
- Conservation Easement Management
- Geographic Information Systems
- Volunteer Management
- Native Plant Management
- Nature Center Management
- Science and Environmental Education
- Natural History Interpretation
- Trail Management
- Signage Design
- Grant Writing and Fundraising

CONSULTANT RATES

Habitat Restoration Planning / Trail Design / Consulting	\$100/hour
Biological Monitoring / Project Oversight / Subcontractor Management	\$80/hour
GIS / Mapping / Design Services	\$60/hour
Habitat Restoration / Trail Work	Rate dependent on project scope

In order to better serve our project partners, PVPLC provides all necessary labor, management, equipment, tools, materials, transportation as well as appropriate permits, insurances and taxes.

PROJECT EXPERIENCE

CURRENT HABITAT PROJECTS ON THE PV PENINSULA

White Point Nature Preserve Restoration and Site Improvements, San Pedro

- Native Plant Demonstration Garden Implementation and Management
- Nature Center Restoration and Operations

Palos Verdes Nature Preserve Habitat and Trail Management, Rancho Palos Verdes

- Alta Vicente Ecological Reserve habitat restoration
- Portuguese Bend Reserve habitat restoration
- Abalone Cove Reserve habitat restoration
- Agua Amarga Reserve riparian and coastal sage scrub habitat restoration
- Vicente Bluffs Reserve Habitat Restoration
- Preserve Trails Plan Implementation, Signage Development and Trail Management (Including CA Coastal Trail segments within the PVNP). Includes closures of unauthorized trails.
- Invasive Species Control – Preserve-wide
- Maintenance of trail-related and restoration-related infrastructure



San Ramon Canyon Landslide Stabilization Project, Habitat Restoration and Maintenance, Rancho Palos Verdes

- Habitat Maintenance Services for the San Ramon Canyon Landslide Project, San Ramon Canyon Wetland Mitigation Project (located at PVPLC's Chandler Preserve), and Shoreline Park

Del Cerro Park Recognition Site Implementation

- Coordinated subcontractors to design and implement recognition monument, benches and trails

Linden H. Chandler Preserve Coastal Sage Scrub Restoration and PV Blue Butterfly Habitat Restoration, Rolling Hills Estates

- United States Fish & Wildlife Service 2006 Wildlife Extension Agreement and 2007 Preventing Extinction Grant

George F. Canyon Preserve Habitat Restoration, Trail Enhancement and Demonstration Garden Implementation, Rolling Hills Estates

- State of California Department of Parks and Recreation, Riparian and Riverine Grant
- Los Angeles County Regional Park and Open Space District Grant

PVB Habitat Restoration Project at Deane Dana Friendship Community Regional County Park, San Pedro

- Subcontractor to Sapphos Environmental, Inc. on Los Angeles County project

CURRENT SCIENCE, EDUCATION AND VOLUNTEER PROJECTS ON THE PENINSULA

Monthly free public Nature Walks, led by PVPLC, Peninsula-Wide

Volunteer Programs (Peninsula-Wide):

- KEEPERS Program: Keeping an Eye on the Preserves for Ecological Review
- Trail Crew Program
- Volunteer Trail Watch
- Habitat Restoration Volunteers: Saturday Outdoor Volunteer Days (Peninsula-wide), Team Leader Program, Adopt-a-Plot, Native Plant Nursery

Nature Center Operations:

- White Point Nature Preserve (San Pedro)
- George F Canyon Nature Center (Rolling Hills Estates)



PVPLC BOARD OF DIRECTORS AND STAFF

2015 Officers

Bill Swank, President
Cassie Jones, Executive Vice President
Grace Wallace, Secretary
John Spielman, Treasurer

2015 Board of Directors

Bill Ailor
Scott Ammons
Bruce Biesman-Simons
Bob Ford
Allen Franz
Amy Friend
Rob Kautz
Michael J. Kilroy
Susan McKenna
Joe Platnick
Ken Swenson

2015 Staff

Executive Director

Andrea Vona, Executive Director

Administration

Jill Wittman, Administrative Assistant

Land Stewardship

Danielle LeFer, Conservation Director
Cris Sarabia, Stewardship Manager
Adrienne Mohan, Stewardship Associate
Ann Dalkey, Science Stewardship Associate
Damian Morando, Field Operations Technician
Neli Gonzalez, Nursery Technician
Hugo Morales, Lead Technician
Humberto Calderon, Stewardship Technician
Trent Quinston, Stewardship Technician

Education Program

Siegrun Storer, Education Director
John Nieto, Education Manager
Loretta Rose, Naturalist
Holly Gray, Naturalist
Kelly Grkinich, Naturalist
Neil Uelman, Naturalist

Development

Susan Wilcox, Director of Development
Louise Olfarnes, Communications Manager
Mary Lopes, Donor Relations

Volunteer Management

Brittany Mendelsohn, Volunteer Program Manager

